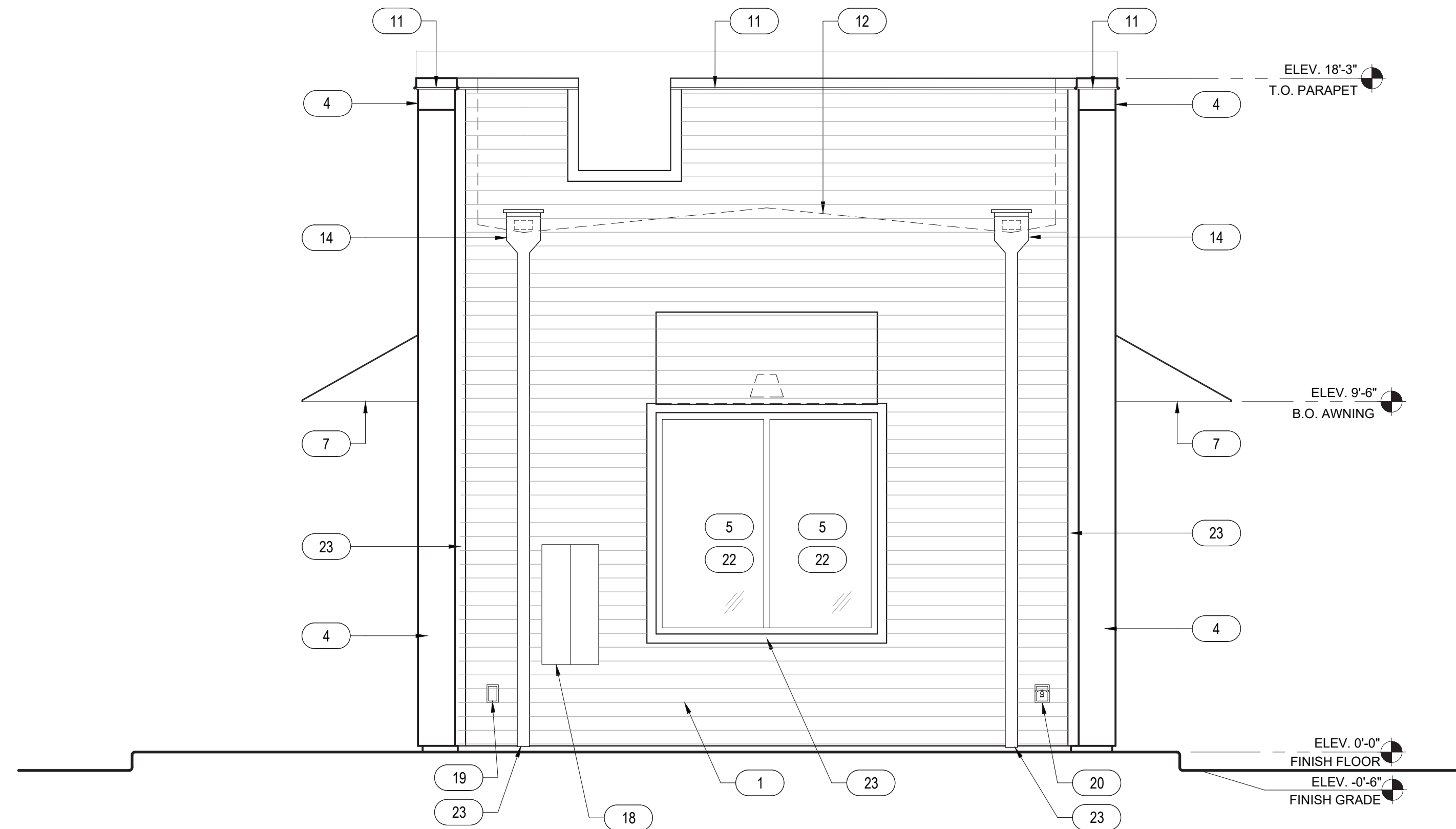


THIS DRAWING AND ITS CONTENTS ARE THE COPYRIGHTED PROPERTY OF FM GROUP INC. USE THEREOF IS LIMITED TO THE SPECIFIC PROJECT AND SITE SET FORTH ABOVE, AND MAY NOT BE OTHERWISE USED OR REPRODUCED, IN WHOLE OR IN PART, WITHOUT THE WRITTEN PERMISSION OF FM GROUP INC. THE ARCHITECT. THIS DRAWING IS TO BE RETURNED UPON REQUEST.



**2 NORTH ELEVATION**  
SCALE: 3/8" = 1'-0"



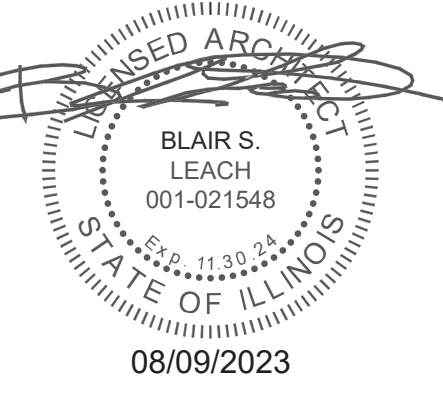
**1 EAST ELEVATION**  
SCALE: 3/8" = 1'-0"

**KEYNOTES**

X

1. HARDIE PLANK HZS LAP SIDING CEDARMILL 6-1/4". SEE HARDIE DETAIL SHEET A6.5 - COLOR: SHERWIN WILLIAMS SW6992 INKWELL EGG SHELL FINISH
2. ELDORADO STONE MARQUEE24 - COLOR: DOVE TAIL
3. ELDORADO STONE, SPLIT-EDGE WAINSCOT SILL - COLOR: WHITE CLOUD
4. 20 GAUGE METAL ACCENTS AND SOFFITS - COLOR: BLACK
5. INSULATED DARK BRONZE ALUMINUM WINDOWS WITH DUAL PANE TEMPERED GLASS
6. QUICKSERVE 48X48 WINDOW - COLOR: DARK BRONZE
7. AWNING BY OTHERS - COLOR: RED
8. INSULATED HOLLOW METAL DOOR AND FRAME - COLOR: SHERWIN WILLIAMS SW6992 INKWELL EGG SHELL FINISH
9. PEEP HOLE, BY DOOR MANUFACTURER
10. DOOR BELL
11. 20 GAUGE METAL PARAPET CAP
12. LINE OF ROOF BEYOND
13. ROOF TOP UNIT BEYOND, SEE MECHANICAL DRAWINGS
14. ROOF SCUPPER AND DOWNSPOUT, SEE DETAIL 8/A6.3
15. MAILBOX BY OWNER
16. WALL MOUNTED LIGHT FIXTURE, SEE ELECTRICAL DRAWINGS
17. LED LIGHT BAND, SEE ELECTRICAL DRAWINGS
18. SES PANEL, SEE ELECTRICAL DRAWINGS
19. ELECTRICAL OUTLETS, SEE ELECTRICAL DRAWINGS
20. HOSE BIBB, SEE PLUMBING DRAWINGS
21. SIGNAGE BY OTHERS, UNDER A SEPARATE PERMIT
22. SPANDREL GLASS PANE / PANEL
23. 3-1/2" X 1" 5/4 NT3 SMOOTH HARDIE TRIM - COLOR: SHERWIN WILLIAMS INKWELL EGG SHELL FINISH
24. DOWNSPOUTS TO CONNECT TO STORM DRAIN, SEE DETAIL 7/A6.3

**BLAIR S. LEACH, AIA**  
NCARB, LEED AP BD+C  
3631 NORTH KATMAI  
MESA, AZ 85215



PROJECT ADDRESS:  
1931 GLACIER PARK AVE  
NAPERVILLE, IL 60540

REVISIONS:

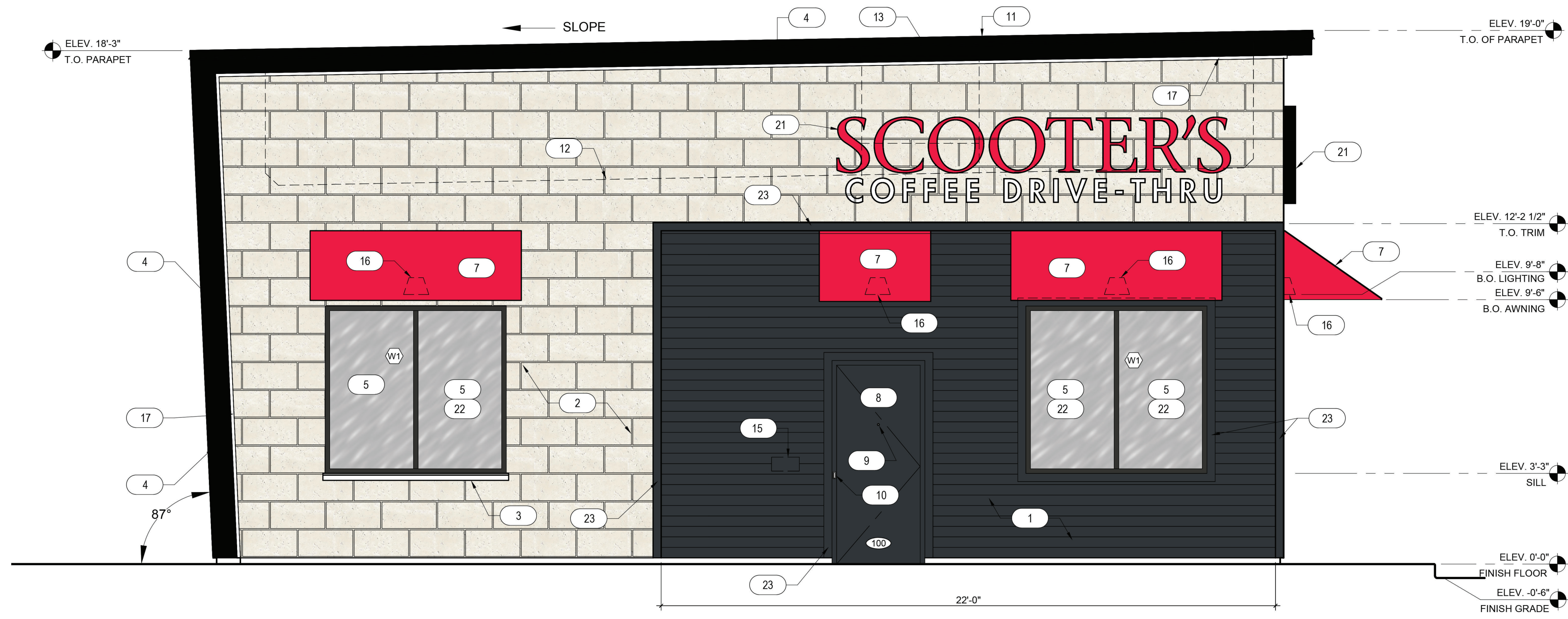
TITLE:  
**EXTERIOR ELEVATIONS**

DATE:  
1.13.2023  
PROJECT NO.  
22-268

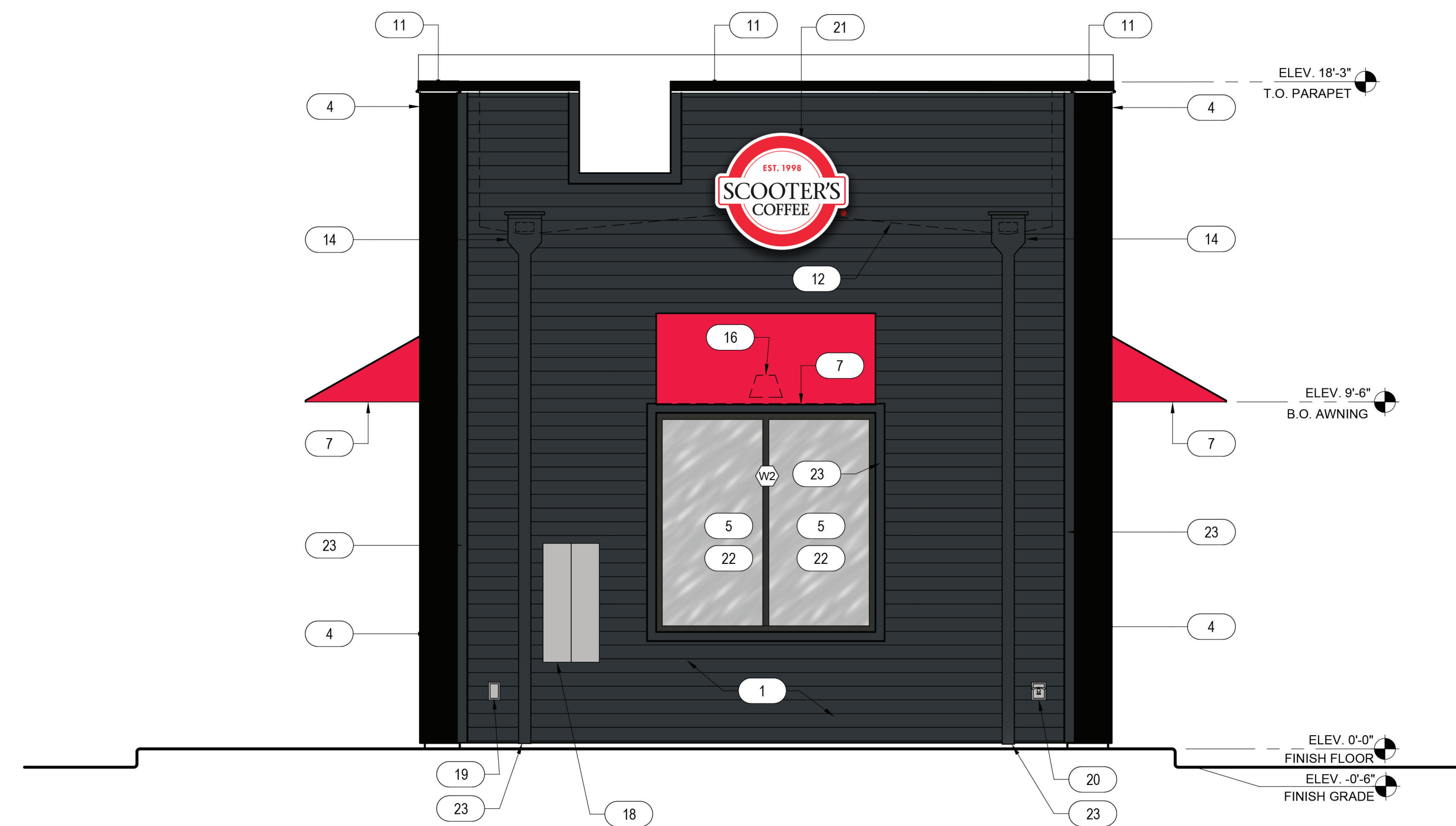
SHEET NO.

**A3.1**

THIS DRAWING AND ITS CONTENTS ARE THE COPYRIGHTED PROPERTY OF FM GROUP INC. USE THEREOF IS LIMITED TO THE SPECIFIC PROJECT AND SITE SET FORTH ABOVE, AND MAY NOT BE OTHERWISE USED OR REPRODUCED, IN WHOLE OR IN PART, WITHOUT THE WRITTEN PERMISSION OF FM GROUP INC. THE ARCHITECT. THIS DRAWING IS TO BE RETURNED UPON REQUEST.



**2 NORTH ELEVATION**  
SCALE: 3/8" = 1'-0"



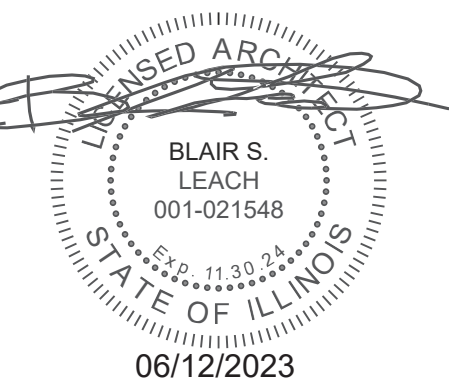
**1 EAST ELEVATION**  
SCALE: 3/8" = 1'-0"

**KEYNOTES**

1. HARDIE PLANK H25 LAP SIDING CEDARMILL 6-1/4". SEE HARDIE DETAIL SHEET A6.5 - COLOR: SHERWIN WILLIAMS SW6992 INKWELL EGGHELL FINISH
2. ELDORADO STONE MARQUEE24 - COLOR: DOVE TAIL
3. ELDORADO STONE, SPLIT-EDGE WAINSCOT SILL - COLOR: WHITE CLOUD
4. 20 GAUGE METAL ACCENTS AND SOFFITS - COLOR: BLACK
5. INSULATED DARK BRONZE ALUMINUM WINDOWS WITH DUAL PANE TEMPERED GLASS
6. QUICKSERVE 48X48 WINDOW - COLOR: DARK BRONZE
7. AWNING BY OTHERS - COLOR: RED
8. INSULATED HOLLOW METAL DOOR AND FRAME - COLOR: SHERWIN WILLIAMS SW6992 INKWELL EGGHELL FINISH
9. PEEP HOLE, BY DOOR MANUFACTURER
10. DOOR BELL
11. 20 GAUGE METAL PARAPET CAP
12. LINE OF ROOF BEYOND
13. ROOF TOP UNIT BEYOND, SEE MECHANICAL DRAWINGS
14. ROOF SCUPPER AND DOWNSPOUT, SEE DETAIL 8/A6.3
15. MAILBOX BY OWNER
16. WALL MOUNTED LIGHT FIXTURE, SEE ELECTRICAL DRAWINGS
17. LED LIGHT BAND, SEE ELECTRICAL DRAWINGS
18. SES PANEL, SEE ELECTRICAL DRAWINGS
19. ELECTRICAL OUTLETS, SEE ELECTRICAL DRAWINGS
20. HOSE BIBB, SEE PLUMBING DRAWINGS
21. SIGNAGE BY OTHERS, UNDER A SEPARATE PERMIT
22. SPANDREL GLASS PANE / PANEL.
23. 3-1/2" X1" 5/4 NT3 SMOOTH HARDIE TRIM - COLOR: SHERWIN WILLIAMS INKWELL EGGHELL FINISH
24. DOWNSPOUTS TO CONNECT TO STORM DRAIN, SEE DETAIL 7/A6.3

**BLAIR S. LEACH, AIA**

NCARB, LEED AP BD+C  
3631 NORTH KATMAI  
MESA, AZ 85215



PROJECT ADDRESS:  
1931 GLACIER PARK AVE  
NAPERVILLE, IL 60540

REVISIONS:  
  
3 CITY COMMENTS 3.13.23

TITLE:  
**EXTERIOR ELEVATIONS**

DATE:  
1.13.2023  
PROJECT NO.  
22-268

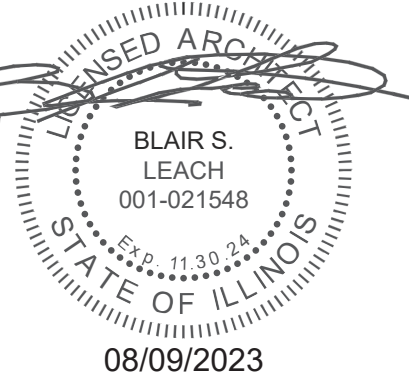
SHEET NO.  
**A3.1**

THIS DRAWING AND ITS CONTENTS ARE THE COPYRIGHTED PROPERTY OF FM GROUP INC. USE THEREOF IS LIMITED TO THE SPECIFIC PROJECT AND SITE SET FORTH ABOVE, AND MAY NOT BE OTHERWISE USED OR REPRODUCED, IN WHOLE OR IN PART, WITHOUT THE WRITTEN PERMISSION OF FM GROUP INC. THE ARCHITECT. THIS DRAWING IS TO BE RETURNED UPON REQUEST.

**KEYNOTES** X

1. HARDIE PLANK HZ5 LAP SIDING CEDARMILL 6-1/4", SEE HARDIE DETAIL SHEET A6.5 - COLOR: SHERWIN WILLIAMS SW6992 INKWELL EGGHELL FINISH
2. ELDORADO STONE MARQUEE24 - COLOR: DOVE TAIL
3. ELDORADO STONE, SPLIT-EDGE WAINSCOT SILL - COLOR: WHITE CLOUD
4. 20 GAUGE METAL ACCENTS AND SOFFITS - COLOR: BLACK
5. INSULATED DARK BRONZE ALUMINUM WINDOWS WITH DUAL PANE TEMPERED GLASS
6. QUICKSERVE 48X48 WINDOW - COLOR: DARK BRONZE
7. AWNING BY OTHERS - COLOR: RED
8. INSULATED HOLLOW METAL DOOR AND FRAME - COLOR: SHERWIN WILLIAMS SW6992 INKWELL EGGHELL FINISH
9. PEEP HOLE, BY DOOR MANUFACTURER
10. DOOR BELL
11. 20 GAUGE METAL PARAPET CAP
12. LINE OF ROOF BEYOND
13. ROOF TOP UNIT BEYOND, SEE MECHANICAL DRAWINGS
14. ROOF SCUPPER AND DOWNSPOUT, SEE DETAIL 8/A6.3
15. MAILBOX BY OWNER
16. WALL MOUNTED LIGHT FIXTURE, SEE ELECTRICAL DRAWINGS
17. LED LIGHT BAND, SEE ELECTRICAL DRAWINGS
18. SES PANEL, SEE ELECTRICAL DRAWINGS
19. ELECTRICAL OUTLETS, SEE ELECTRICAL DRAWINGS
20. HOSE BIBB, SEE PLUMBING DRAWINGS
21. SIGNAGE BY OTHERS, UNDER A SEPARATE PERMIT
22. SPANDREL GLASS PANE / PANEL
23. 3-1/2" X1" 5/4 NT3 SMOOTH HARDIE TRIM - COLOR: SHERWIN WILLIAMS INKWELL EGGHELL FINISH
24. DOWNSPOUTS TO CONNECT TO STORM DRAIN, SEE DETAIL 7/A6.3

**BLAIR S. LEACH, AIA**  
 NCARB, LEED AP BD+C  
 3631 NORTH KATMAI  
 MESA, AZ 85215



PROJECT ADDRESS:  
 1931 GLACIER PARK AVE  
 NAPERVILLE, IL 60540

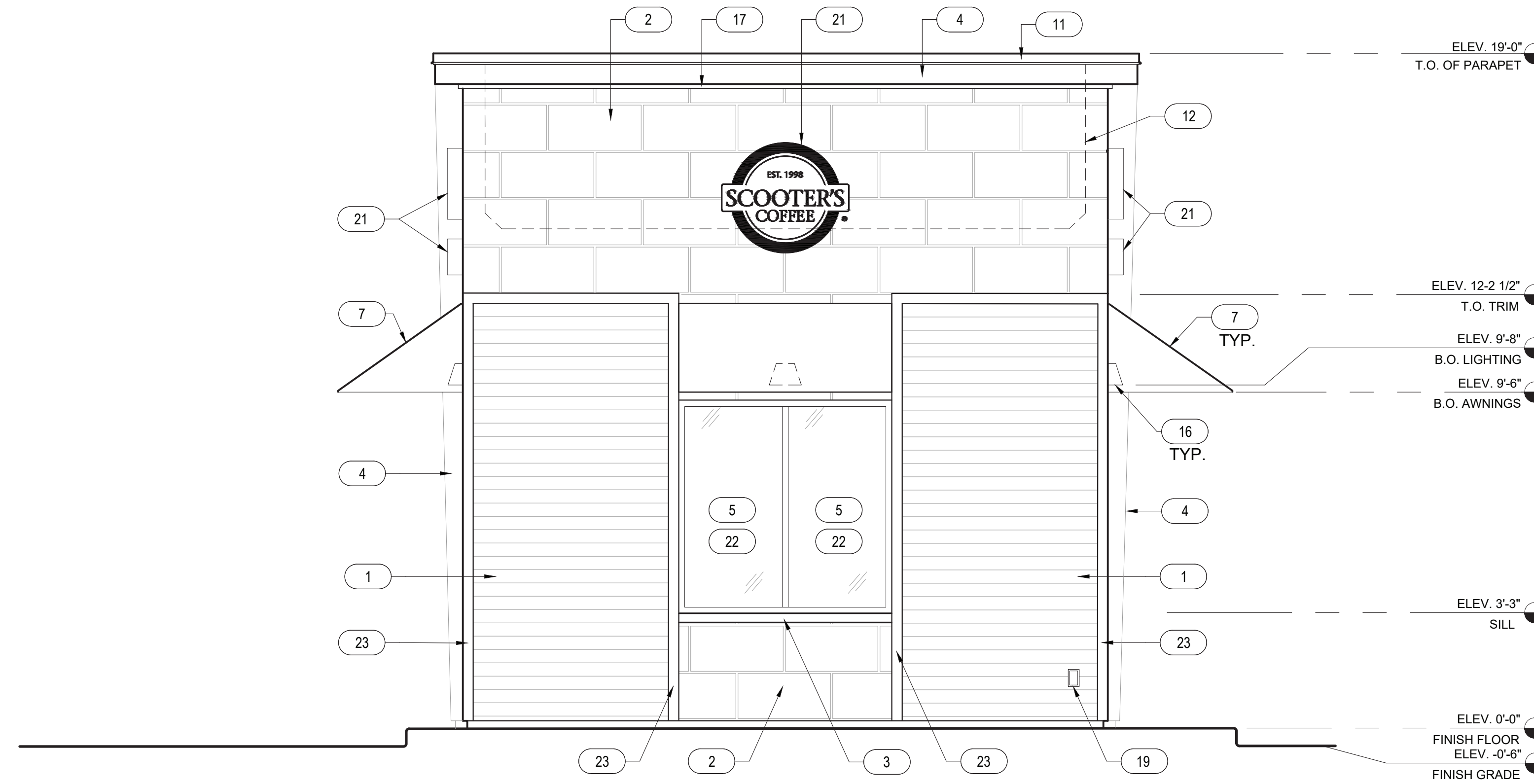
REVISIONS:

TITLE:  
**EXTERIOR ELEVATIONS**

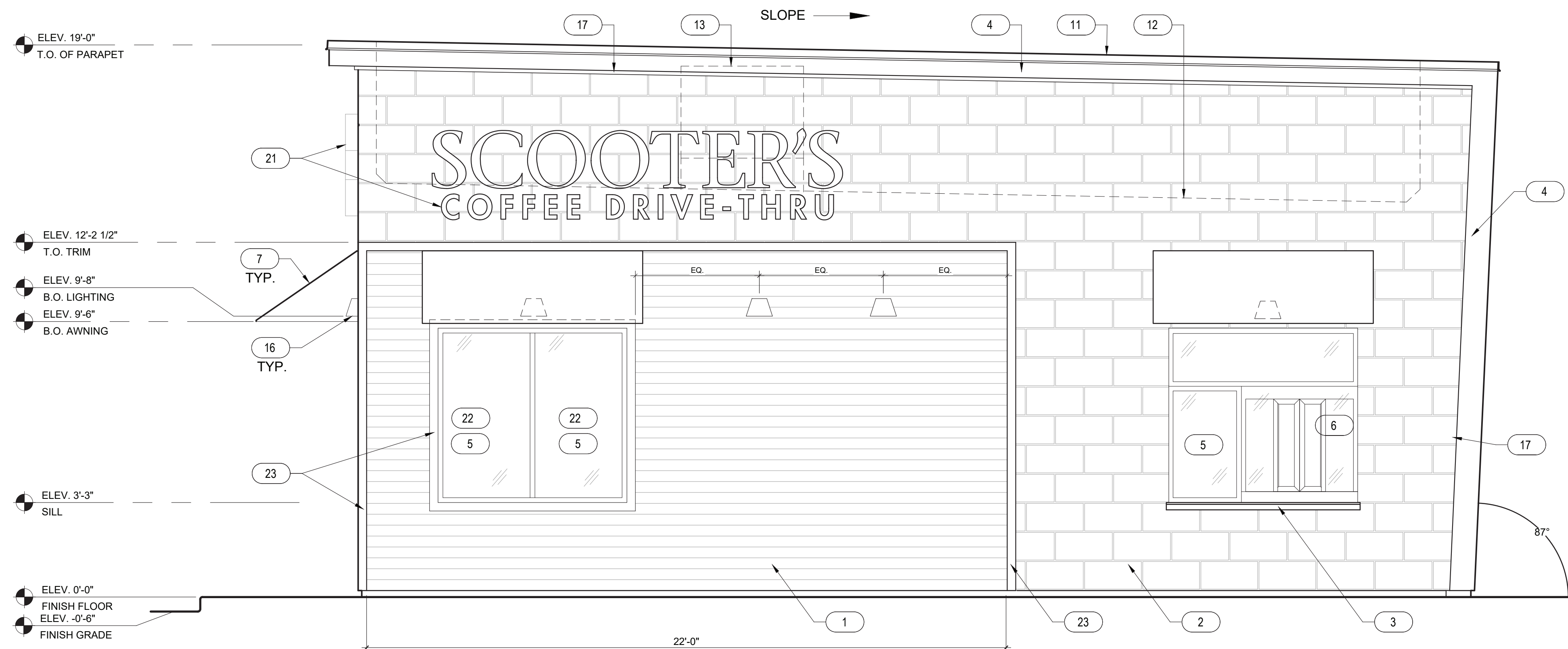
DATE:  
 1.13.2023  
 PROJECT NO.  
 22-268

SHEET NO.

**A3.2**



**2 WEST ELEVATION**  
 SCALE: 3/8" = 1'-0"



**1 SOUTH ELEVATION**  
 SCALE: 3/8" = 1'-0"

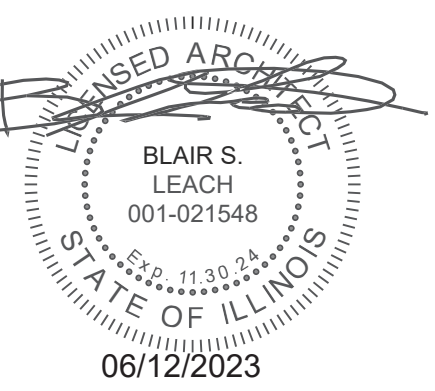
KEYNOTES

X

1. HARDIE PLANK HZ5 LAP SIDING CEDARMILL 6-14". SEE HARDIE DETAIL SHEET A6.5 - COLOR: SHERWIN WILLIAMS SW6992 INKWELL EGGHELL FINISH
2. ELDORADO STONE MARQUEE24 - COLOR: DOVE TAIL
3. ELDORADO STONE, SPLIT-EDGE WAINSCOT SILL - COLOR: WHITE CLOUD
4. 20 GAUGE METAL ACCENTS AND SOFFITS - COLOR: BLACK
5. INSULATED DARK BRONZE ALUMINUM WINDOWS WITH DUAL PANE TEMPERED GLASS
6. QUICKSERVE 48X48 WINDOW - COLOR: DARK BRONZE
7. AWNING BY OTHERS - COLOR: RED
8. INSULATED HOLLOW METAL DOOR AND FRAME - COLOR: SHERWIN WILLIAMS SW6992 INKWELL EGGHELL FINISH
9. PEEP HOLE, BY DOOR MANUFACTURER
10. DOOR BELL
11. 20 GAUGE METAL PARAPET CAP
12. LINE OF ROOF BEYOND
13. ROOF TOP UNIT BEYOND, SEE MECHANICAL DRAWINGS
14. ROOF SCUPPER AND DOWNSPOUT, SEE DETAIL 8/A6.3
15. MAILBOX BY OWNER
16. WALL MOUNTED LIGHT FIXTURE, SEE ELECTRICAL DRAWINGS
17. LED LIGHT BAND, SEE ELECTRICAL DRAWINGS
18. SES PANEL, SEE ELECTRICAL DRAWINGS
19. ELECTRICAL OUTLETS, SEE ELECTRICAL DRAWINGS
20. HOSE BIBB, SEE PLUMBING DRAWINGS
21. SIGNAGE BY OTHERS, UNDER A SEPARATE PERMIT
22. SPANDREL GLASS PANE / PANEL.
23. 3-1/2" X1" 5/4 NT3 SMOOTH HARDIE TRIM - COLOR: SHERWIN WILLIAMS INKWELL EGGHELL FINISH
24. 24. DOWNSPOUTS TO CONNECT TO STORM DRAIN, SEE DETAIL 7/A6.3

**BLAIR S. LEACH, AIA**

NCARB, LEED AP BD+C  
3631 NORTH KATMAI  
MESA, AZ 85215



PROJECT ADDRESS:  
1931 GLACIER PARK AVE  
NAPERVILLE, IL 60540

REVISIONS:

3 CITY COMMENTS 3.13.23

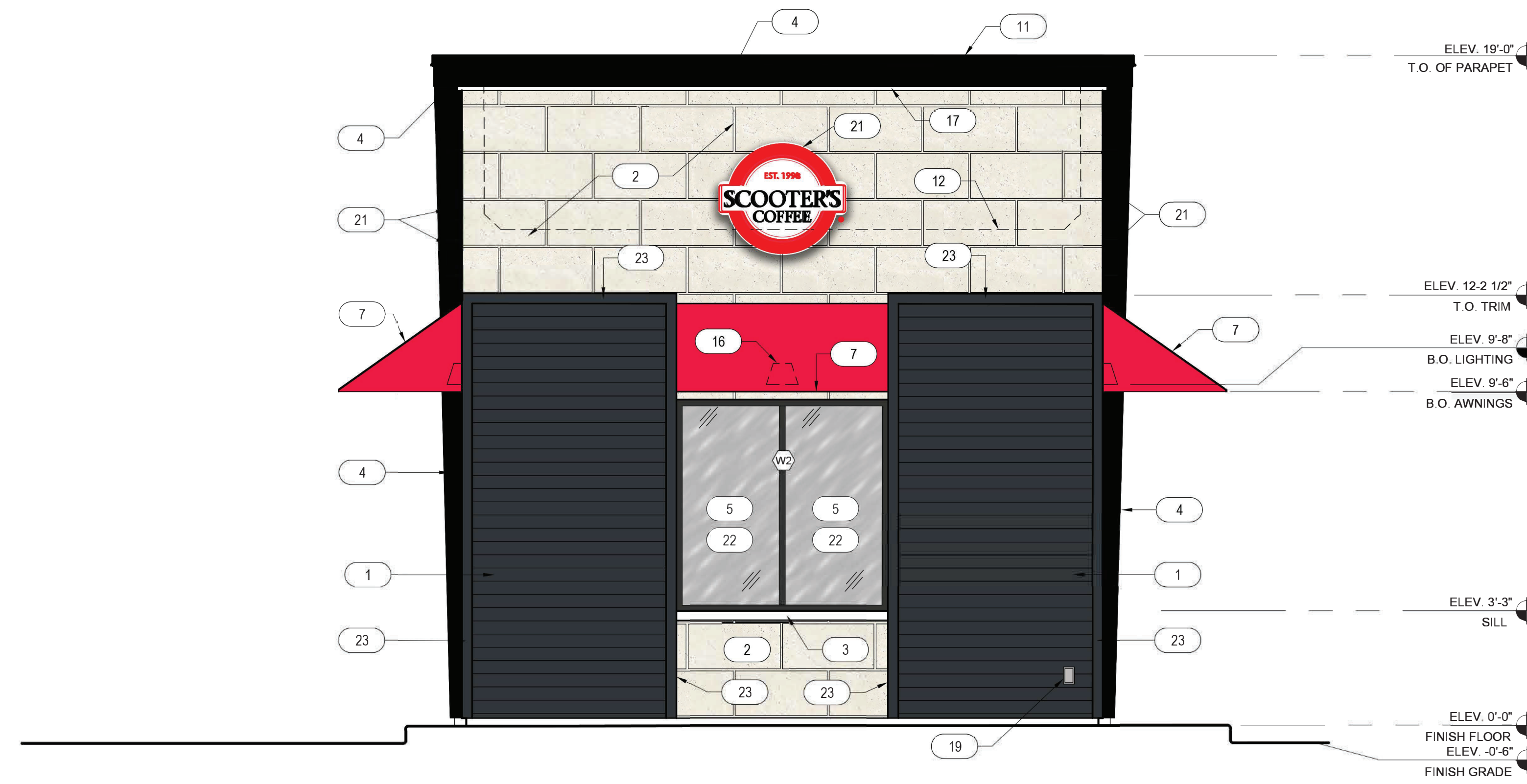
TITLE:  
EXTERIOR  
ELEVATIONS

DATE:  
1.13.2023

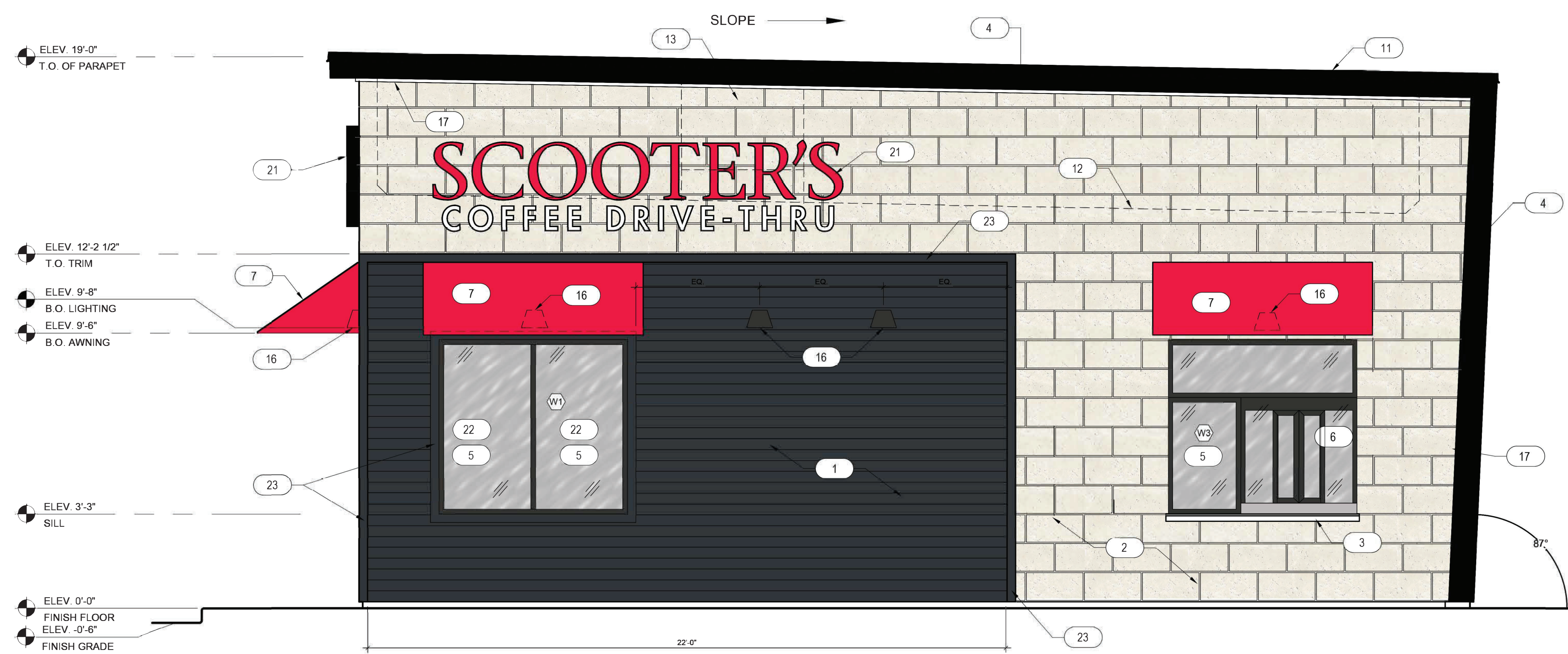
PROJECT NO.  
22-268

SHEET NO.

**A3.2**



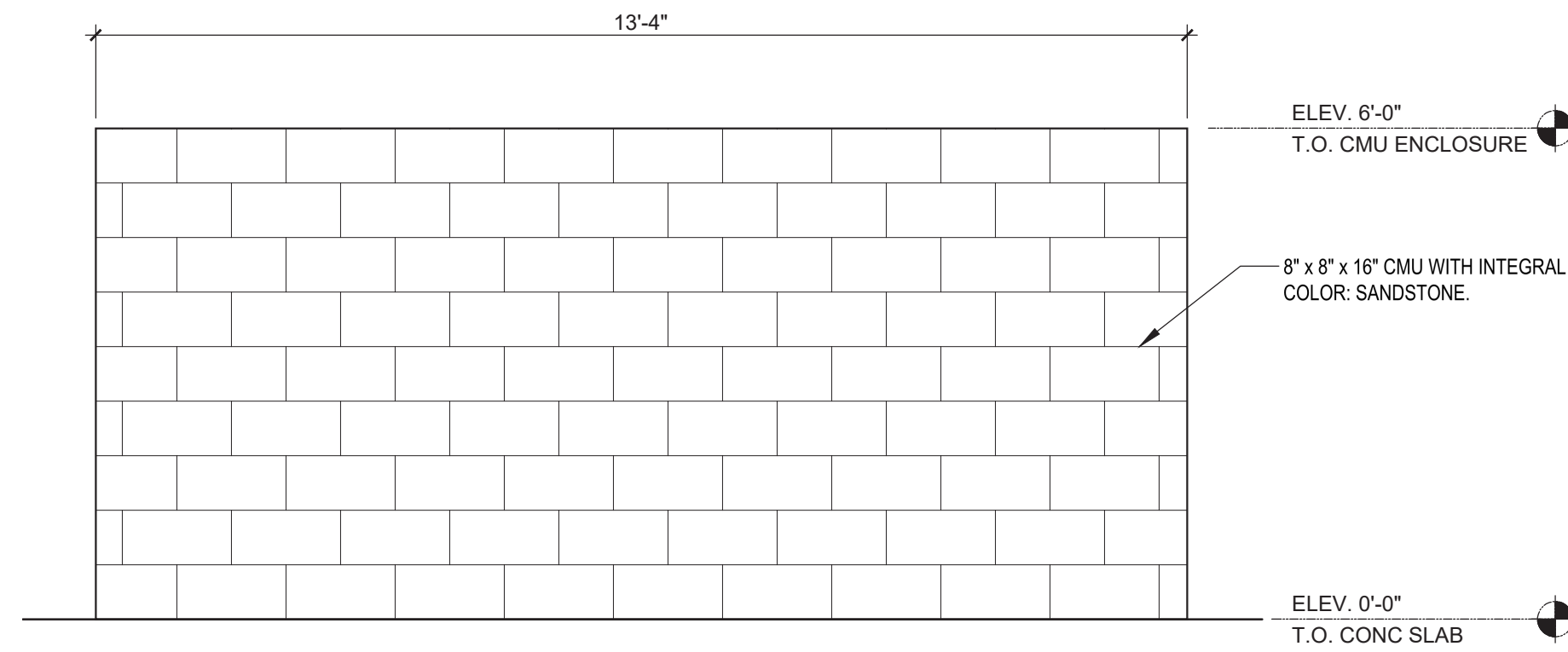
**2 WEST ELEVATION**  
SCALE: 3/8" = 1'-0"



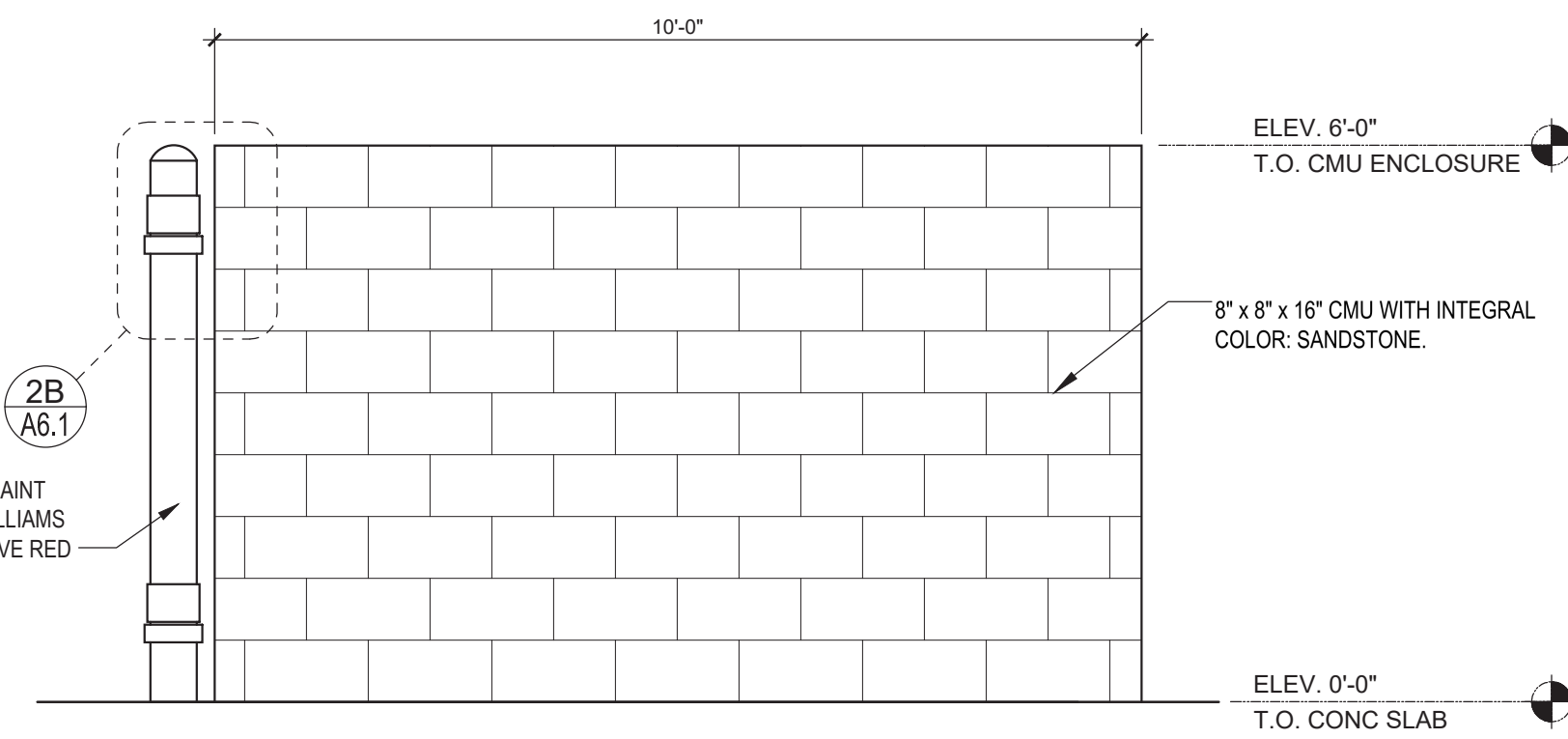
**1 SOUTH ELEVATION**  
SCALE: 3/8" = 1'-0"

THIS DRAWING AND ITS CONTENTS ARE THE COPYRIGHTED PROPERTY OF FM GROUP INC. USE THEREOF IS LIMITED TO THE SPECIFIC PROJECT AND SITE SET FORTH ABOVE, AND MAY NOT BE OTHERWISE USED OR REPRODUCED, IN WHOLE OR IN PART, WITHOUT THE WRITTEN PERMISSION OF FM GROUP INC. THE ARCHITECT. THIS DRAWING IS TO BE RETURNED UPON REQUEST.

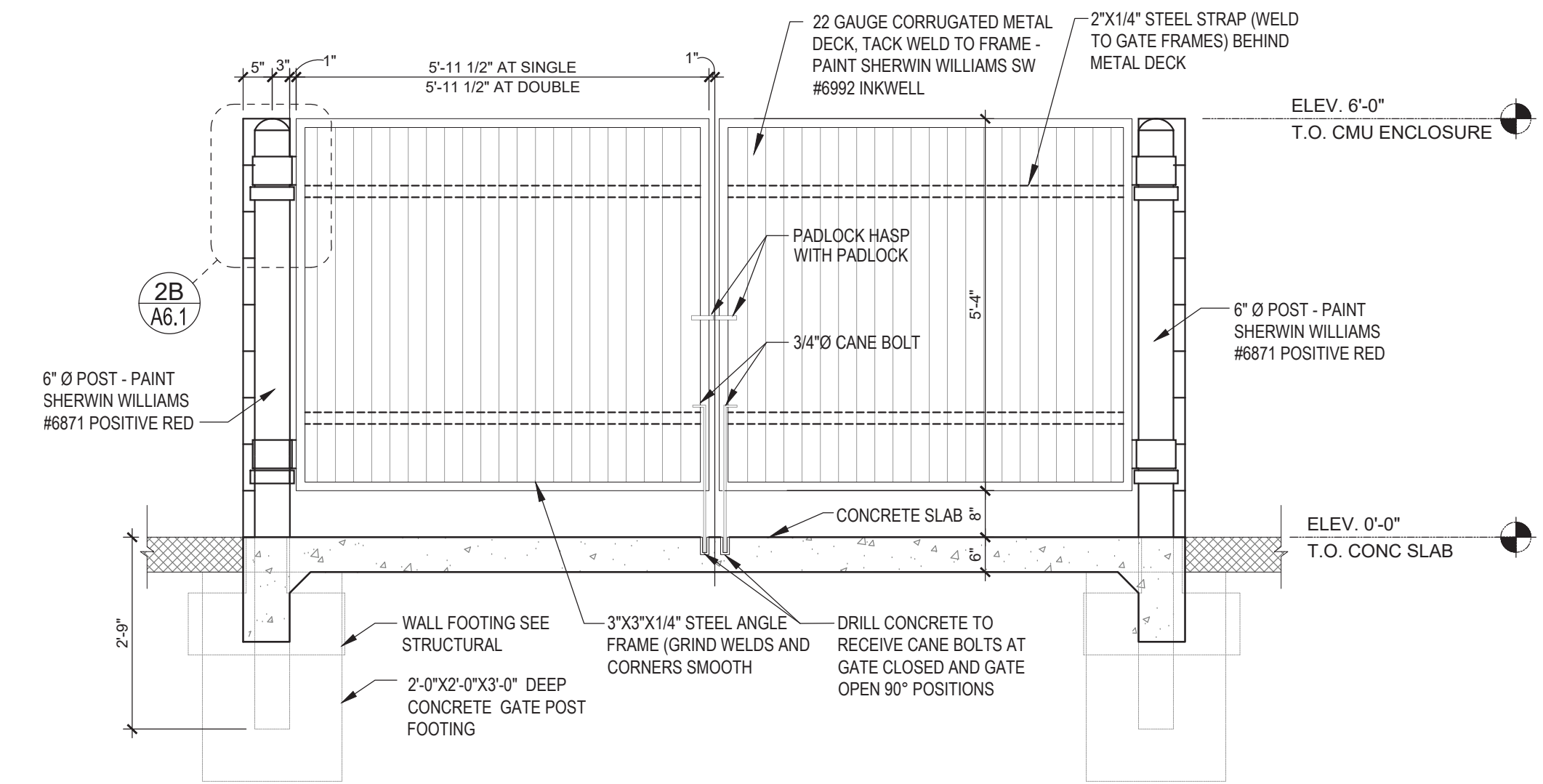
THIS DRAWING AND ITS CONTENTS ARE THE COPYRIGHTED PROPERTY OF FM GROUP INC. USE THEREOF IS LIMITED TO THE SPECIFIC PROJECT AND SITE SET FORTH ABOVE, AND MAY NOT BE OTHERWISE USED OR REPRODUCED, IN WHOLE OR IN PART, WITHOUT THE WRITTEN PERMISSION OF FM GROUP INC. THE ARCHITECT, THIS DRAWING IS TO BE RETURNED UPON REQUEST.



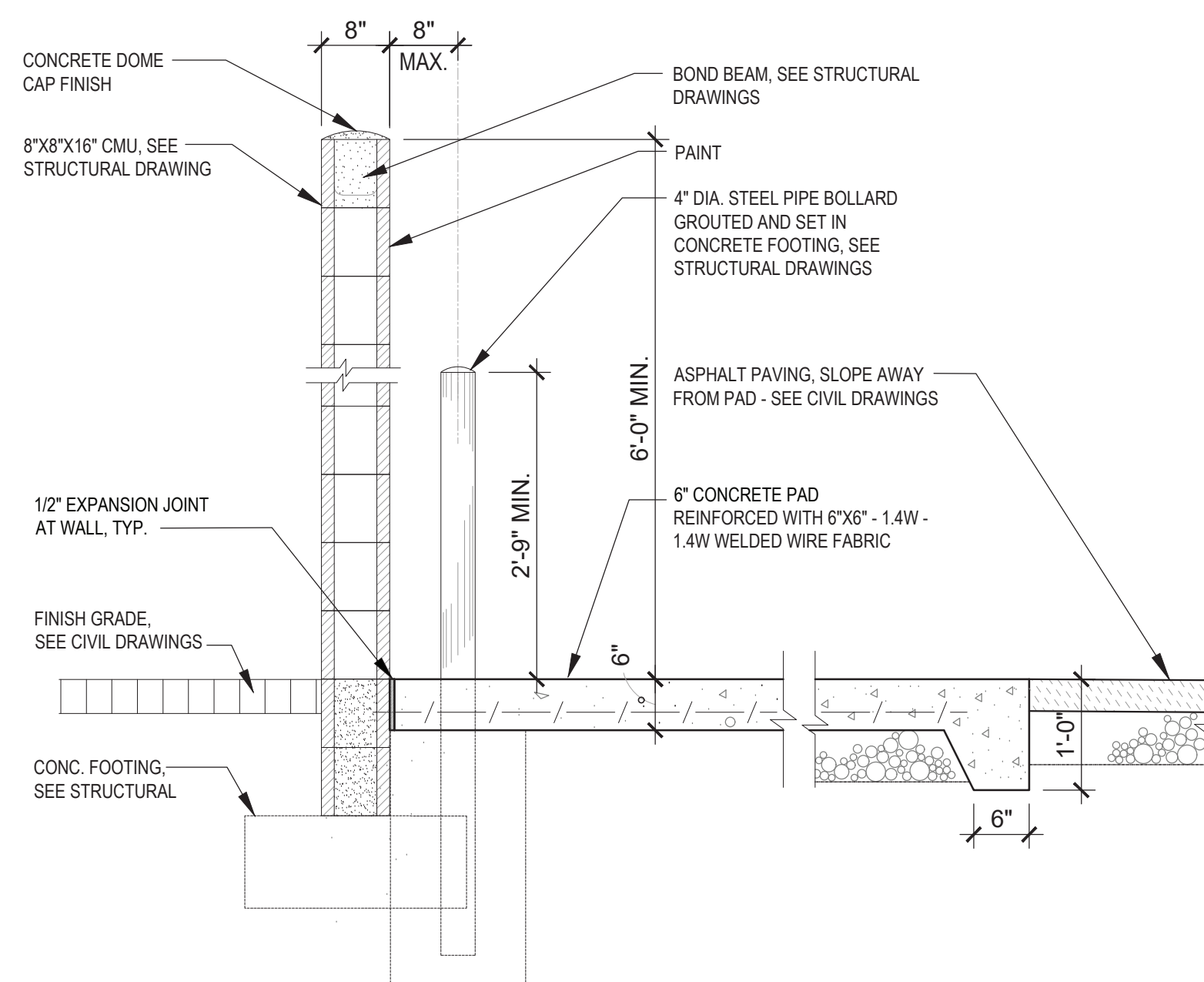
**7 TRASH ENCLOSURE - BACK ELEVATION**  
SCALE: 1/2" = 1'-0"



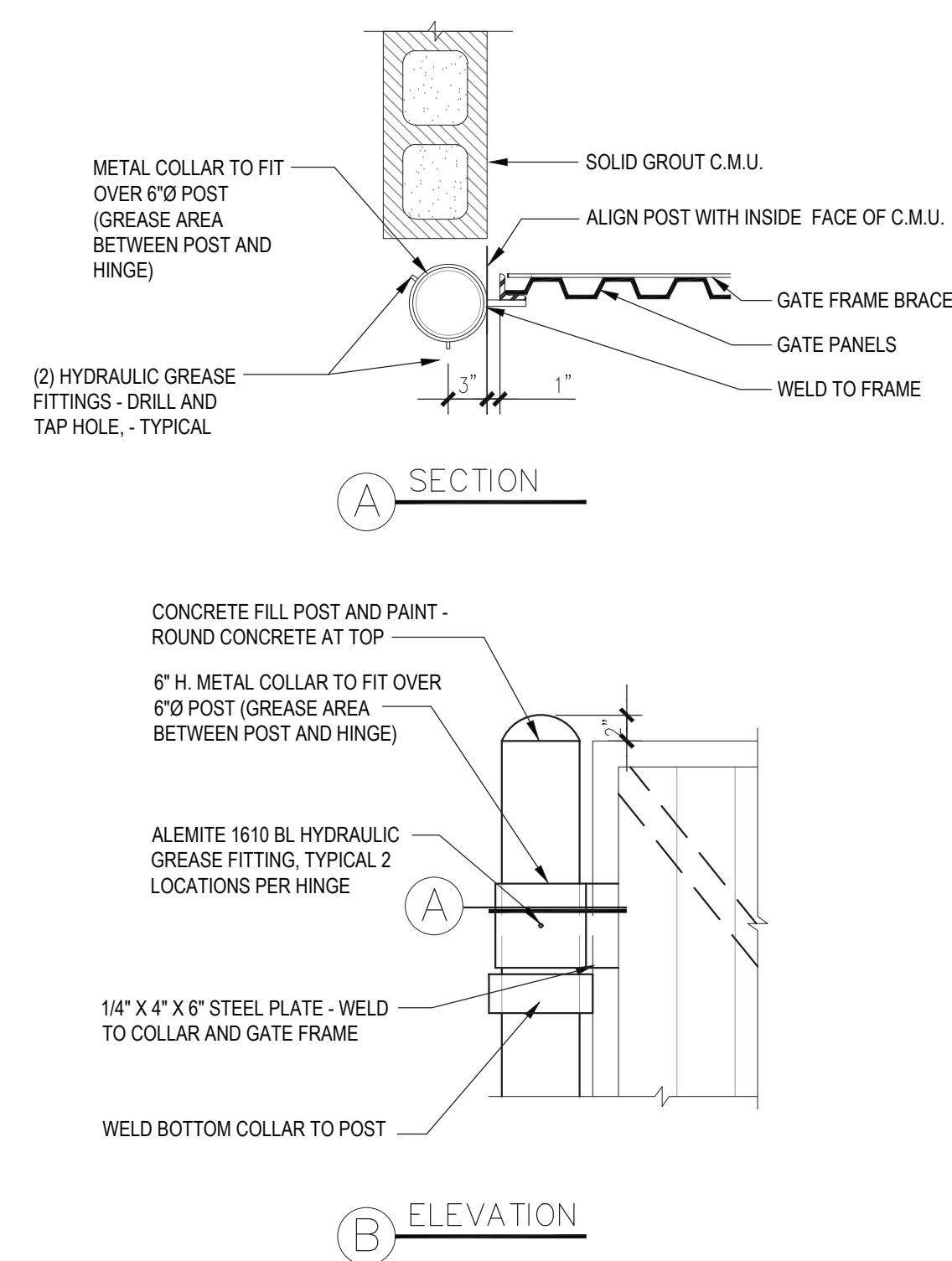
**6 TRASH ENCLOSURE - SIDE ELEVATION**  
SCALE: 1/2" = 1'-0"



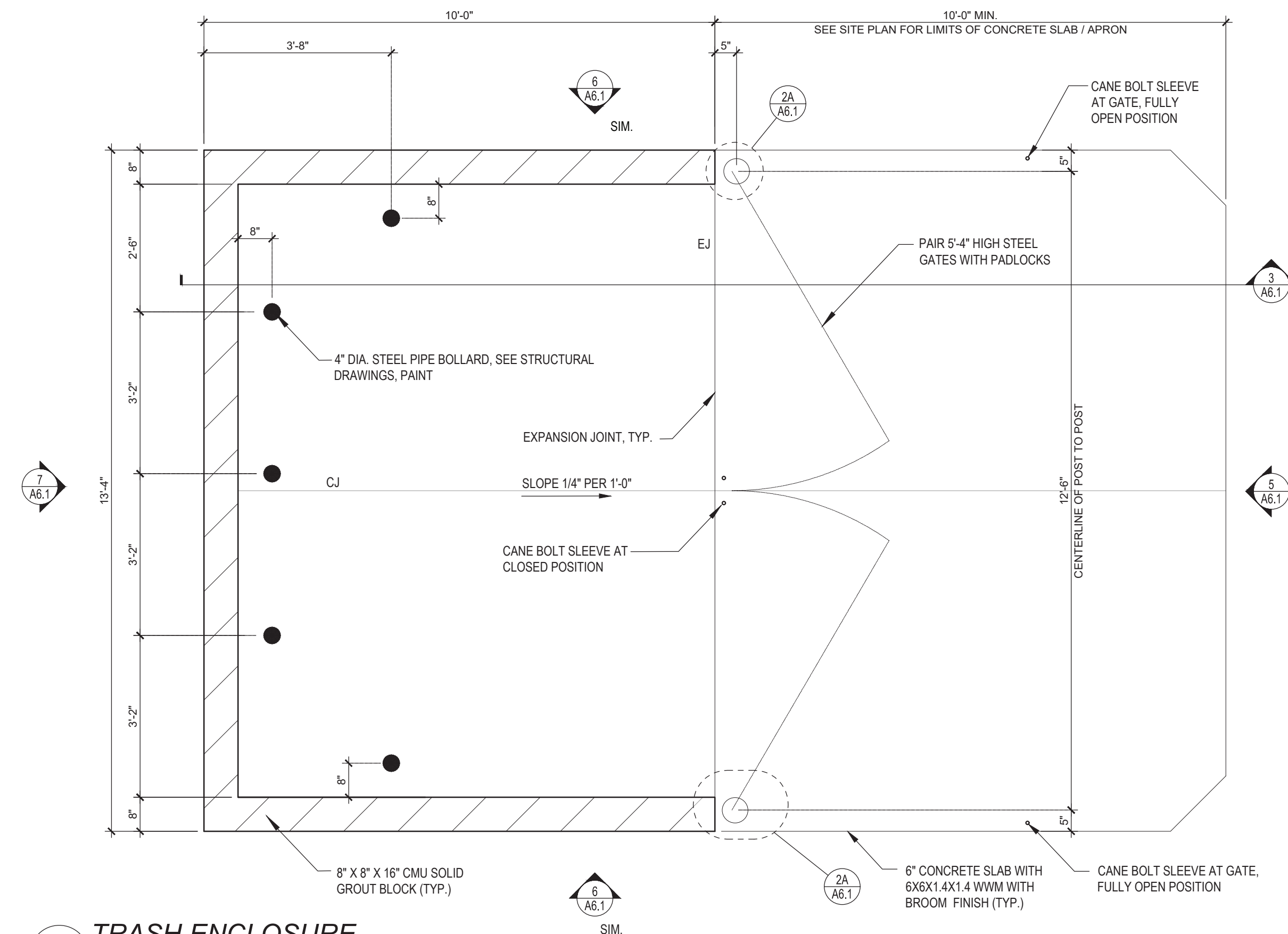
**5 TRASH ENCLOSURE - FRONT ELEVATION**  
SCALE: 1/2" = 1'-0"



**3 SECTION AT TRASH ENCLOSURE**  
SCALE: 3/4" = 1'-0"

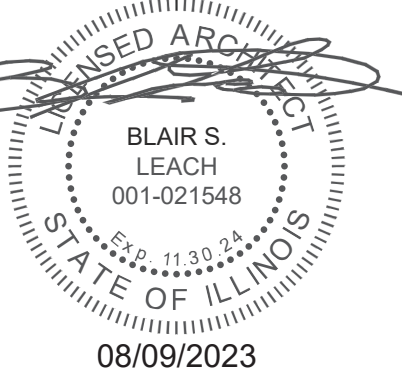


**2 HINGE AT TRASH GATE**  
SCALE: NTS



**1 TRASH ENCLOSURE**  
SCALE: 1/2" = 1'-0"

**BLAIR S. LEACH, AIA**  
NCARB, LEED AP BD+C  
3631 NORTH KATMAI  
MESA, AZ 85215



PROJECT ADDRESS:  
1931 GLACIER PARK AVE  
NAPERVILLE, IL 60540

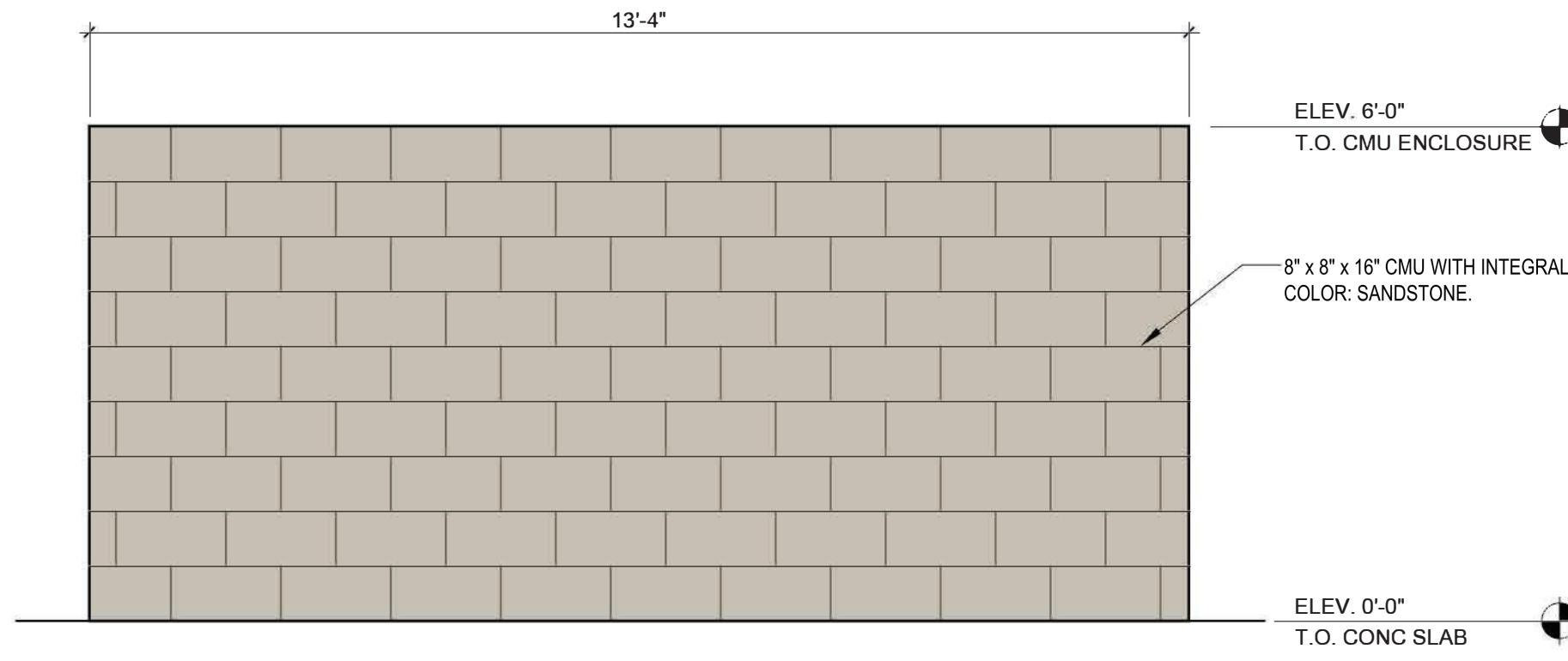
REVISIONS:

TITLE:  
**TRASH ENCLOSURE ELEVATIONS & DETAILS**

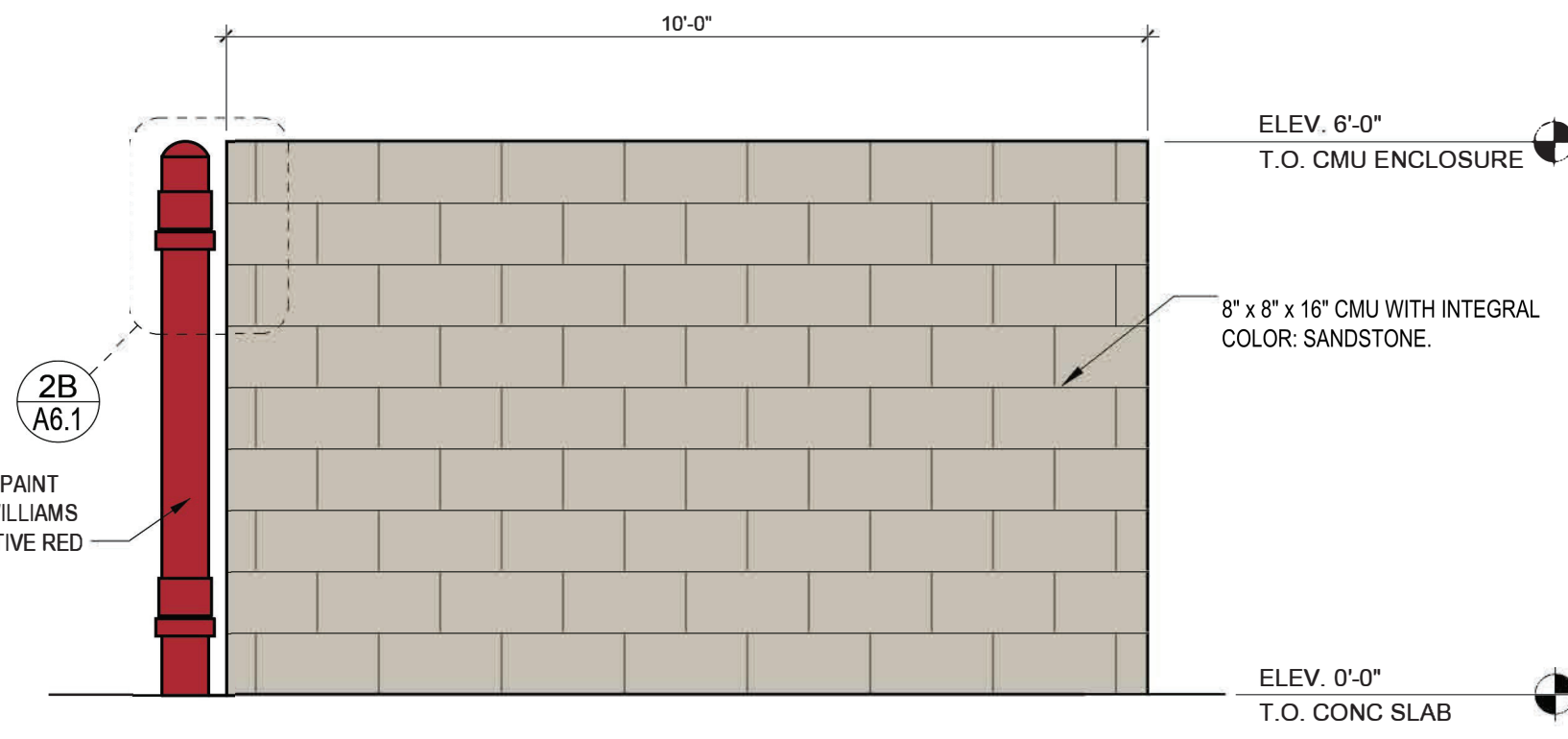
DATE:  
1.13.2023  
PROJECT NO.  
22-268

SHEET NO.

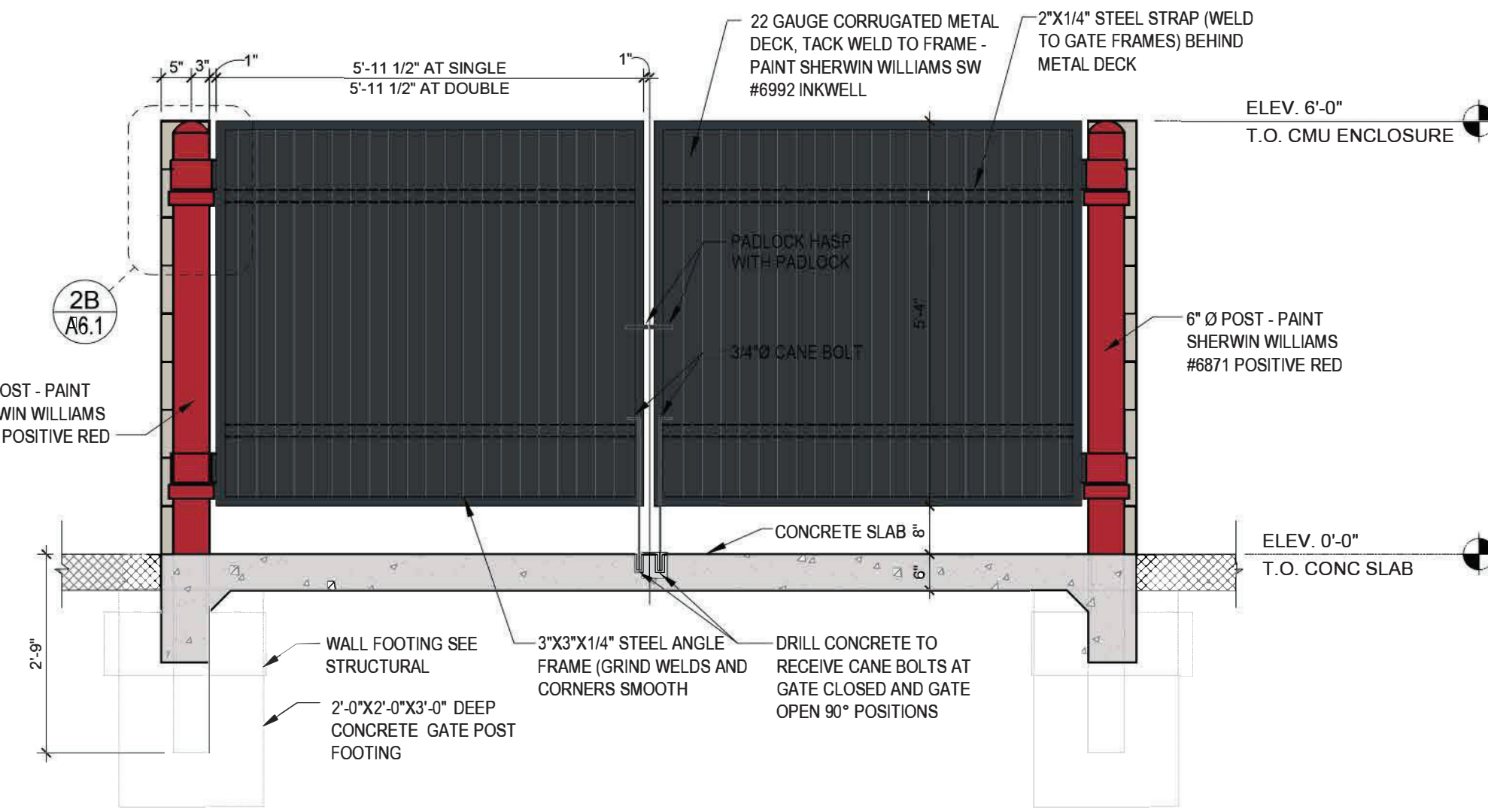
**A6.1**



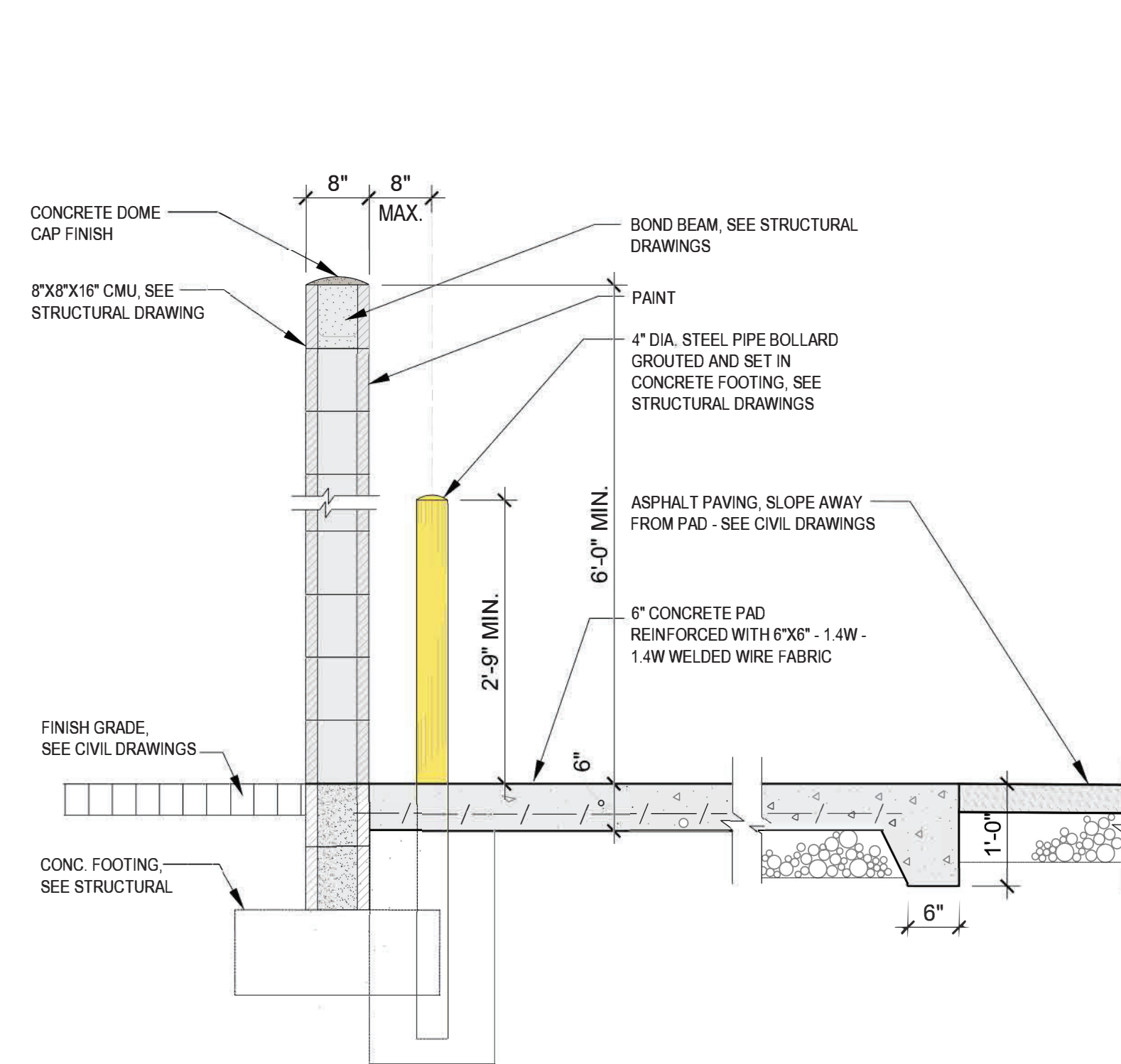
**7 TRASH ENCLOSURE - BACK ELEVATION**  
SCALE: 1/2" = 1'-0"



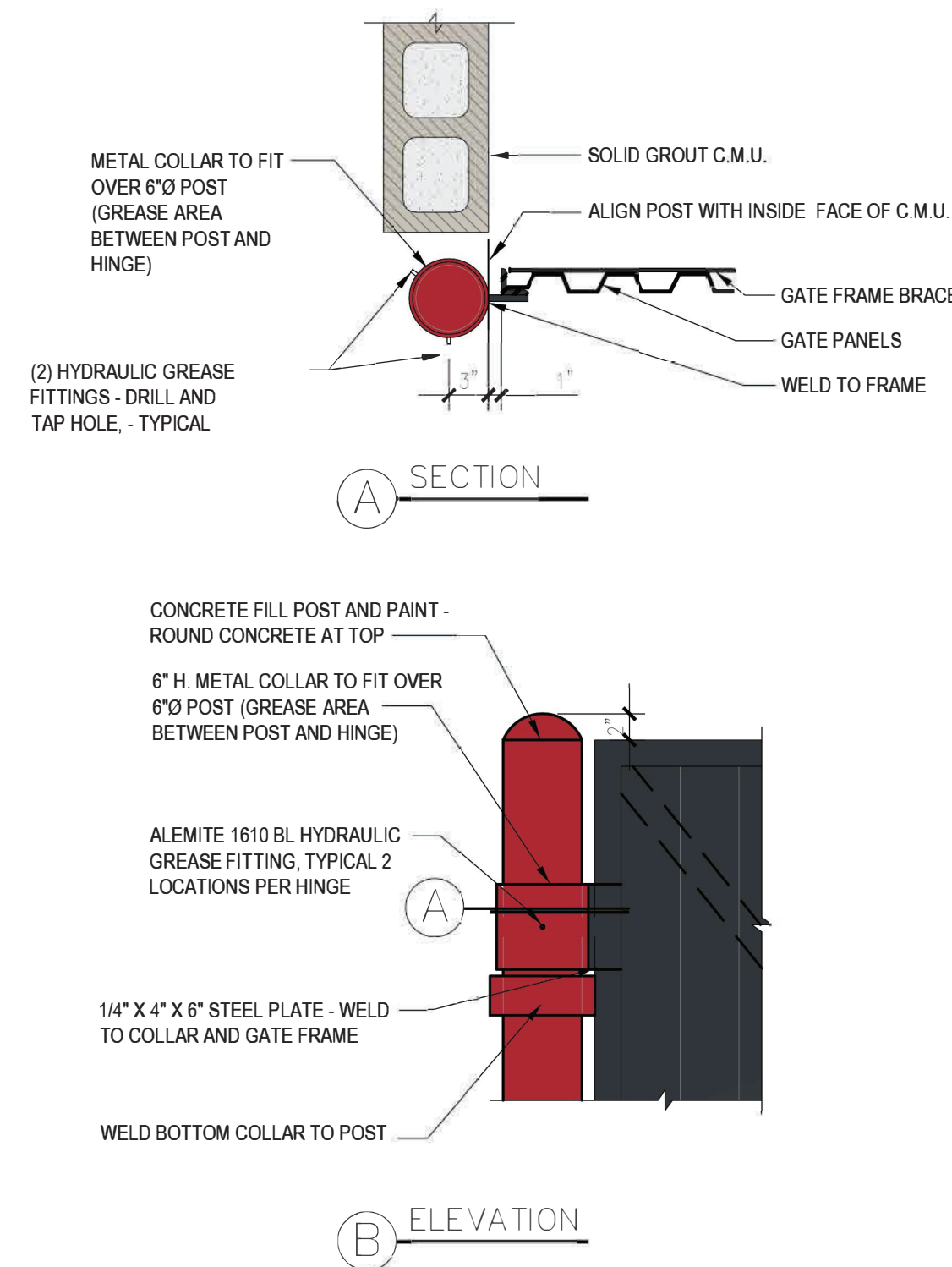
**6 TRASH ENCLOSURE - SIDE ELEVATION**  
SCALE: 1/2" = 1'-0"



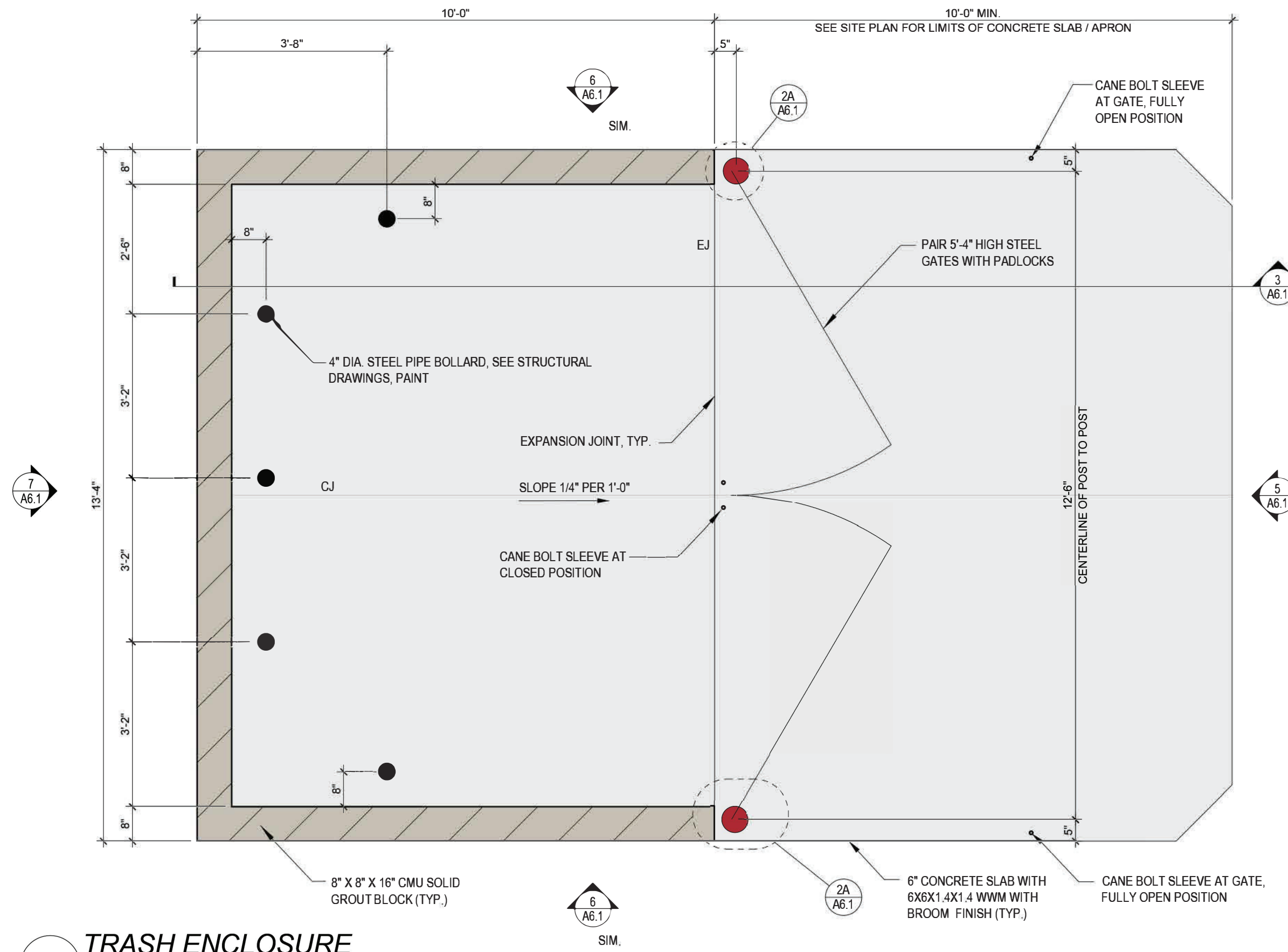
**5 TRASH ENCLOSURE - FRONT ELEVATION**  
SCALE: 1/2" = 1'-0"



**3 SECTION AT TRASH ENCLOSURE**  
SCALE: 3/4" = 1'-0"



**2 HINGE AT TRASH GATE**  
SCALE: NTS

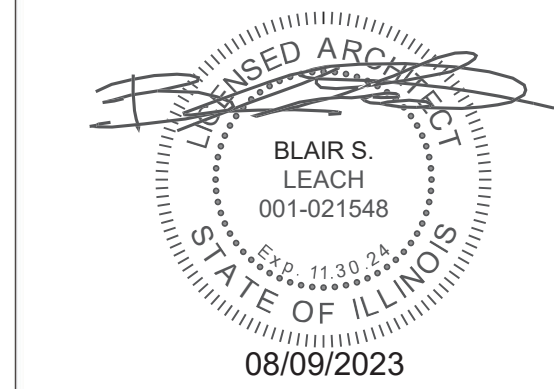


**1 TRASH ENCLOSURE**  
SCALE: 1/2" = 1'-0"

MUNICIPAL APPROVAL STAMP



CLIENT PROJECT



LICENSE EXPIRES ON: \_\_\_\_\_  
DATE OF SIGNATURE: \_\_\_\_\_



REVISIONS

Project Number	Date
No.	Issue

SHEET TITLE & NUMBER  
**TRASH ENCLOSURE ELEVATIONS & DETAILS**

**A6.1**

These documents are confidential and shall be in the possession of authorized individuals only. These documents are the exclusive property of DXU architects and shall not be copied or reproduced without written authorization.