

**Right Elevation**  
 1/16" = 1'  
 Brick Coverage: 23%



**Rear Elevation**  
 1/16" = 1'  
 Brick Coverage: 0%



**Left Elevation**  
 1/16" = 1'  
 Brick Coverage: 34%

Mean Roof Ht.  
 EL. ±39'-0"

- Asphalt Shingles
- Composite Siding (Panel)
- Metal Railing at Opt. Roof Deck
- Cast Stone
- Metal Gutters and Downspouts

- Composite Siding (Trim & Panel)
- Metal Canopy

T/ Fdn.  
 EL. 1'-0"

Garage Thresh.  
 EL. 0'-0"



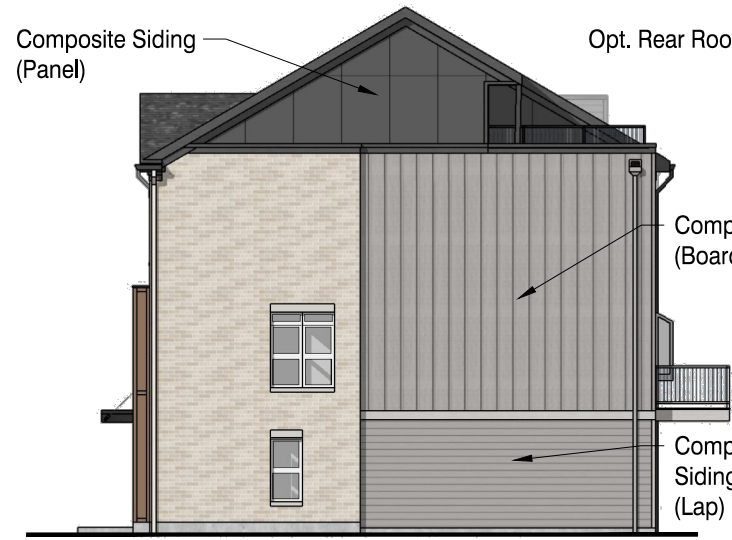
- Composite Trim
- Composite Siding (Lap)
- Brick (Copper/Red)
- Brick (White/Cream)

**Front Elevation**  
 Color Scheme A  
 1" = 10'  
 Brick Coverage: 50%

Total Brick Coverage: 28%







**Right Elevation**  
 1/16" = 1'  
 Brick Coverage: 33%



**Rear Elevation**  
 1/16" = 1'  
 Brick Coverage: 0%

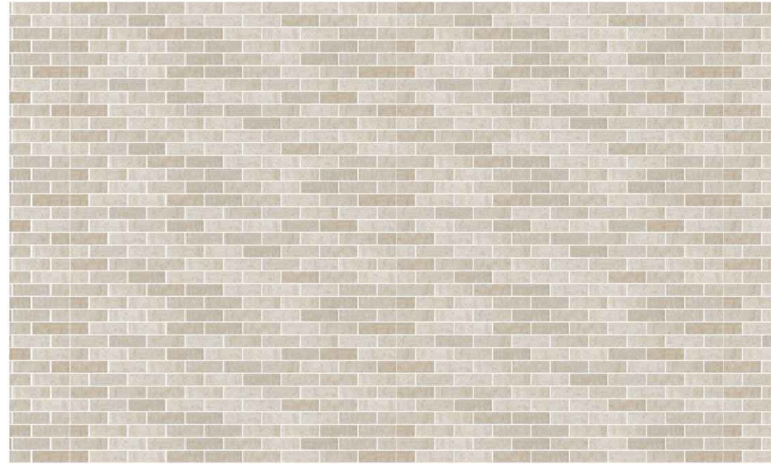


**Left Elevation**  
 1/16" = 1'  
 Brick Coverage: 22%

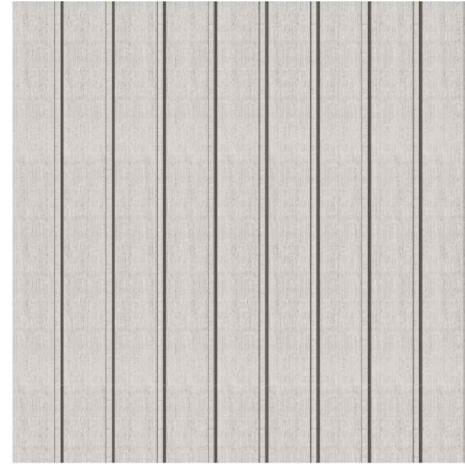


**Front Elevation**  
 Color Scheme A  
 1" = 10'  
 Brick Coverage: 62%      Total Brick Coverage: 30%





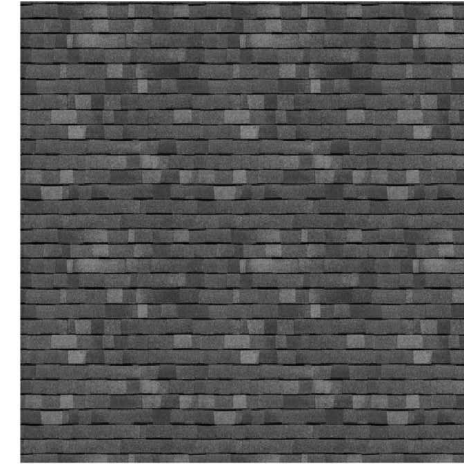
Utility Brick C



Composite Siding C



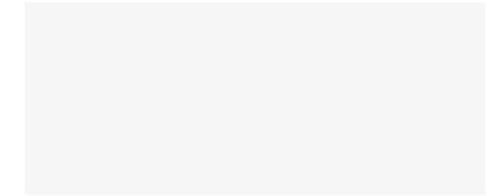
Composite Siding F



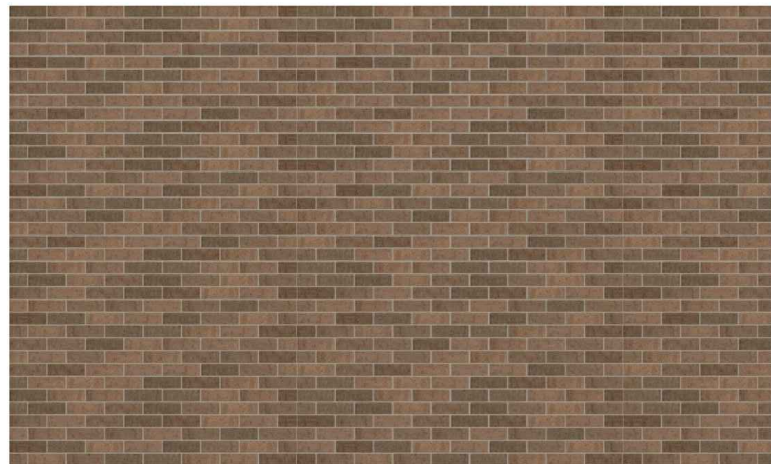
Asphalt Shingles



Entry Door



Windows / Sliding Doors  
Garage Doors / Balcony Rail



Utility Brick B



Composite Siding B



Composite Siding E



Cast Stone



Canopy / Deck Rail / Coping



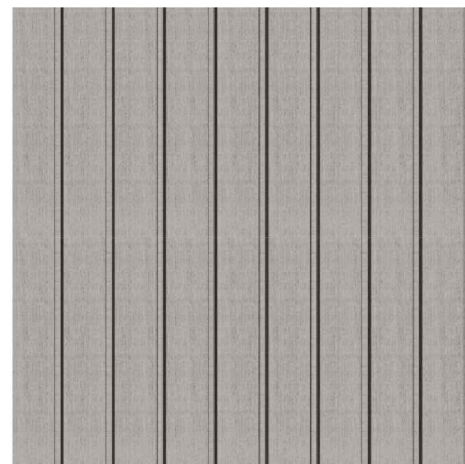
Composite Siding/Trim H



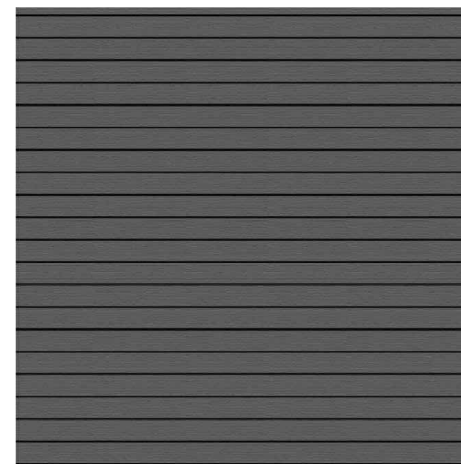
Trim C



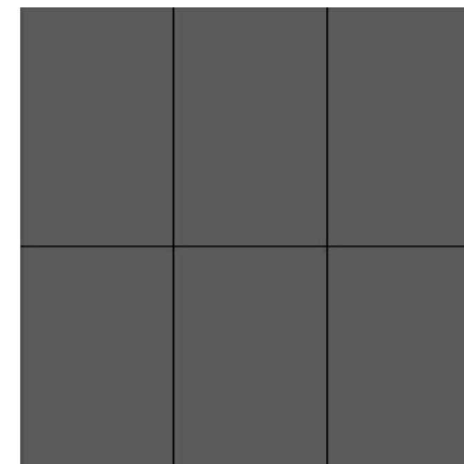
Utility Brick A



Composite Siding A



Composite Siding D



Composite Siding G



Trim B



Trim A