

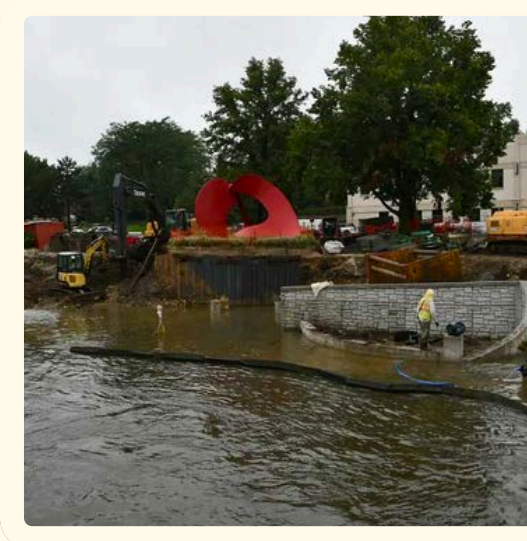


NCC OTD

NAPERVILLE RIVERWALK

Dr. Maud Makoni OTD, OTR/L, MA, CHT
Natasha Araneta, OTS
Enya Wilkins, OTS

Discover More



(PN Photo, 2025)

Today's Agenda

- ✓ Naperville's Accessibility Goals
- ✓ Riverwalk Entrances: Types & Distance
- ✓ Ramps & Slopes
- ✓ Maintenance
- ✓ Sidewalk: Width & Safety
- ✓ Naperville Residents





NAPERVILLE'S ACCESSIBILITY GOALS



“Enhance quality of life for persons with cognitive physical, mental and developmental disabilities living, working or visiting the city of Naperville.”
- Accessible Community Task Force

Naperville’s website offers resources for people with disabilities including:
Advocacy/Support Services/Agencies
Education
Emergency Preparedness
Employment
Financial
and so much more

Riverwalk Master Plan '31

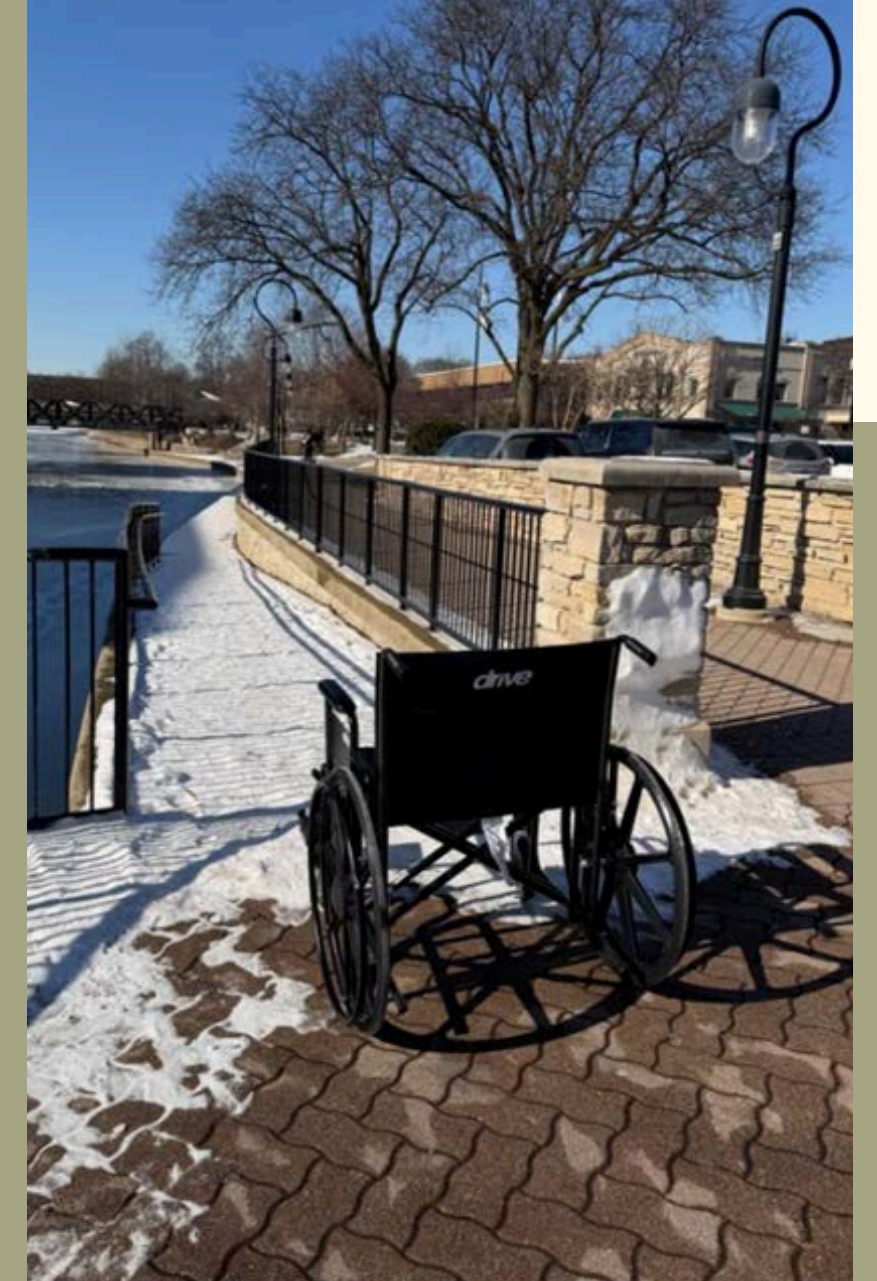
2025
Completed
Eagle Gateway
Construction!



Riverwalk Entrances

Per our assignment, we were looking at these entrances from an ADA point of view.

Accessible ramp on East entrance on S Main Street

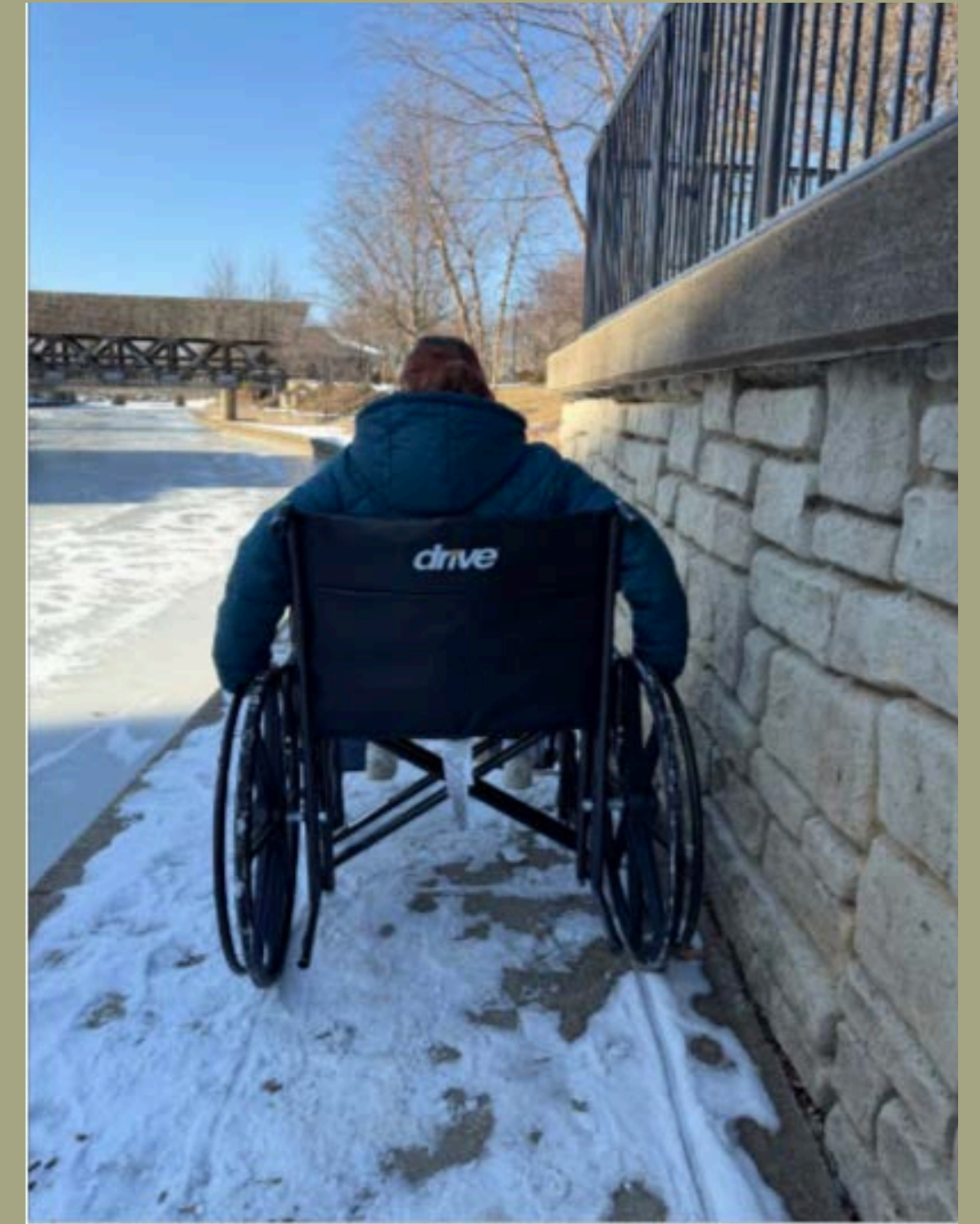


Distance Between Entrances

1,000ft until the next ramp

Narrow sidewalks

High traffic area during warm weather

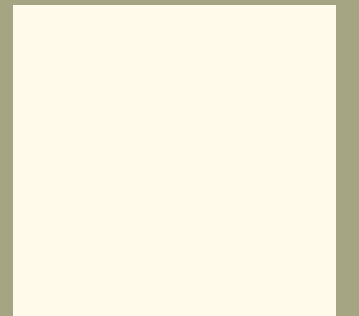


Winter conditions affect participation

(Google, n.d.)

Distance Between Entrances

Adding visual markers, with high contrast, could help those who need to conserve energy.



Distance Between Entrances

Adding higher benches
Adding more arm rests



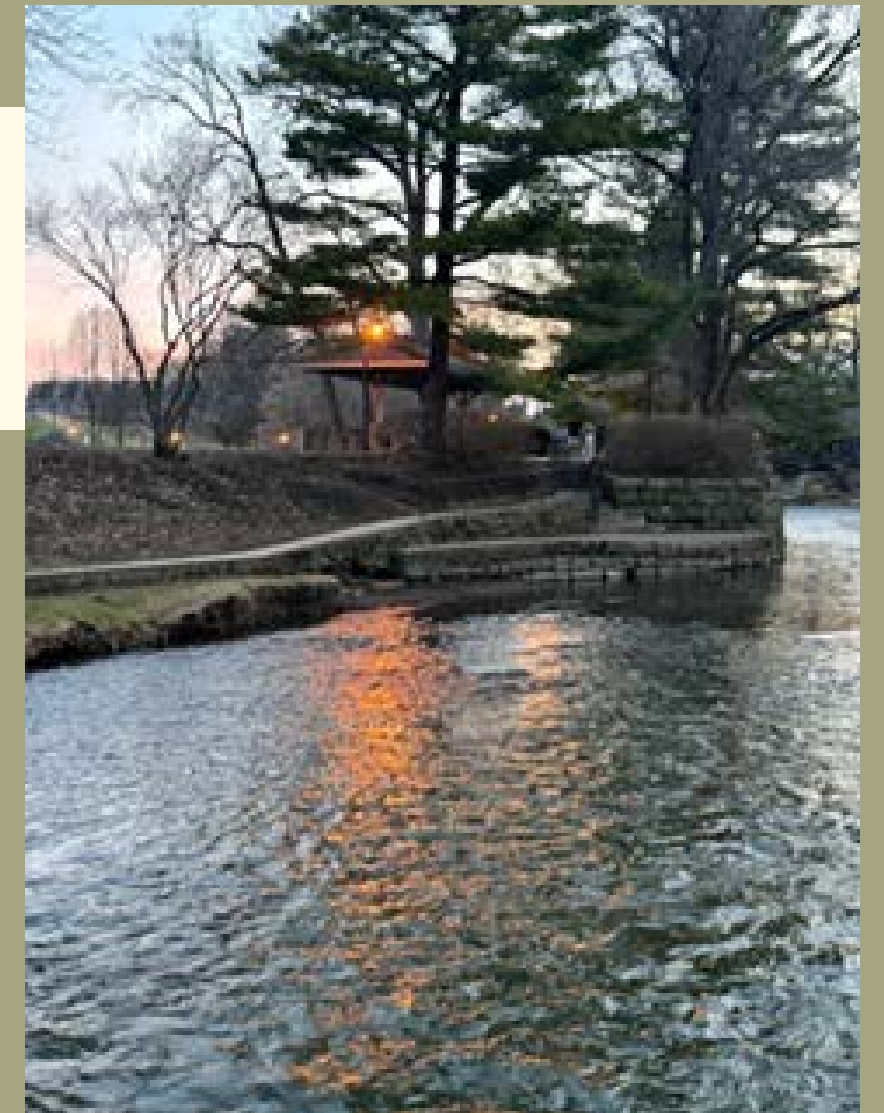
Distance Between Entrances

Jackson & Eagle headed west

North side of river



South side of river



Slopes

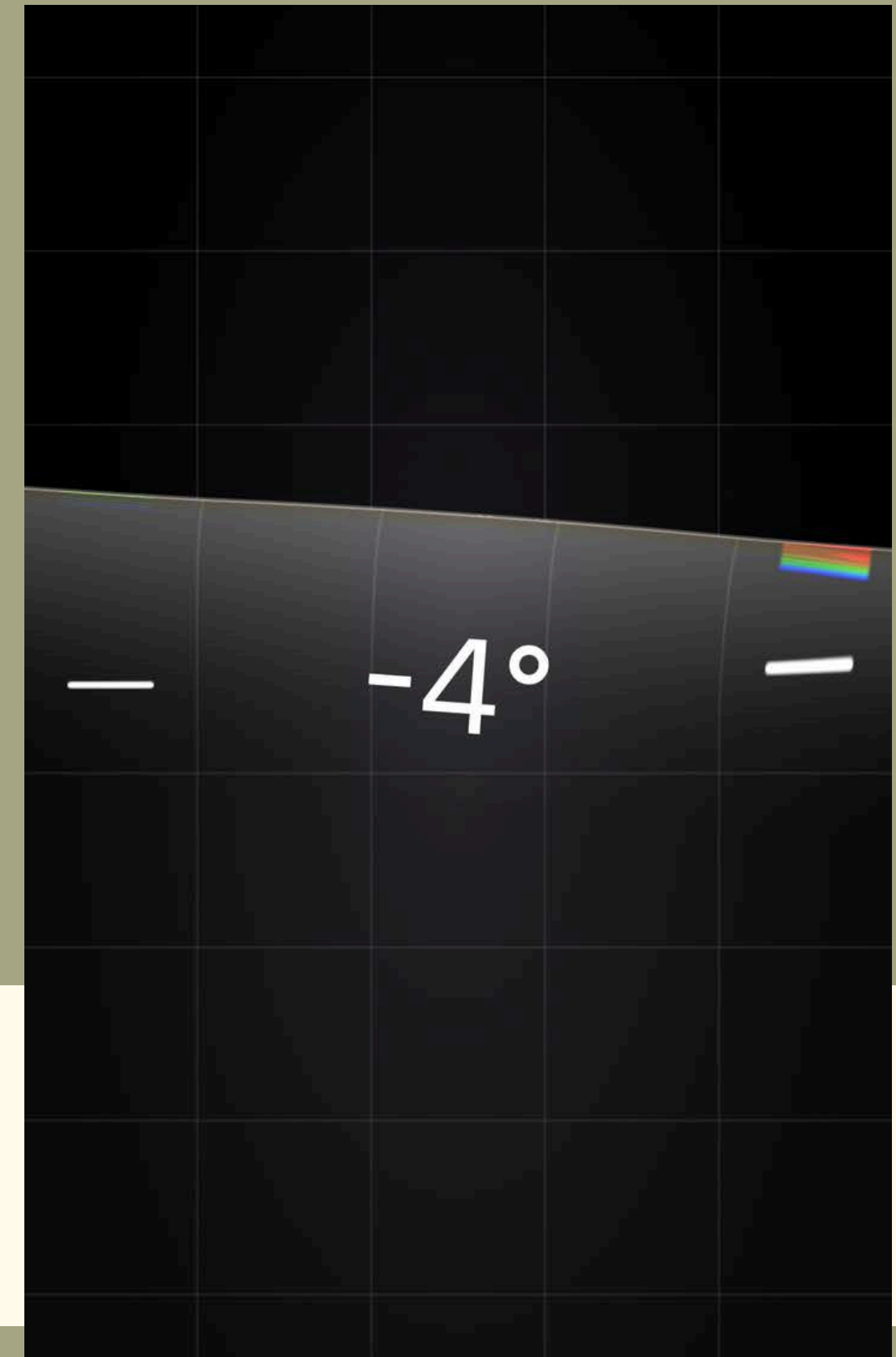
Community Health Environment
Checklist-Mobility (CHEC-M)

ADA accessible slope: Max of 1:12
~8% grade

1st ramp slope: 4° ~ 7% using iPhone
inclinometer

Environmental Considerations

Lack of visual contrast



Slopes: Amphitheater

Wheelchair/walker accessibility is sloped
on both sides - on grass

Only accessible on bottom row

No access directly from river walk

Only 1-side handrails on stairs and
ramps

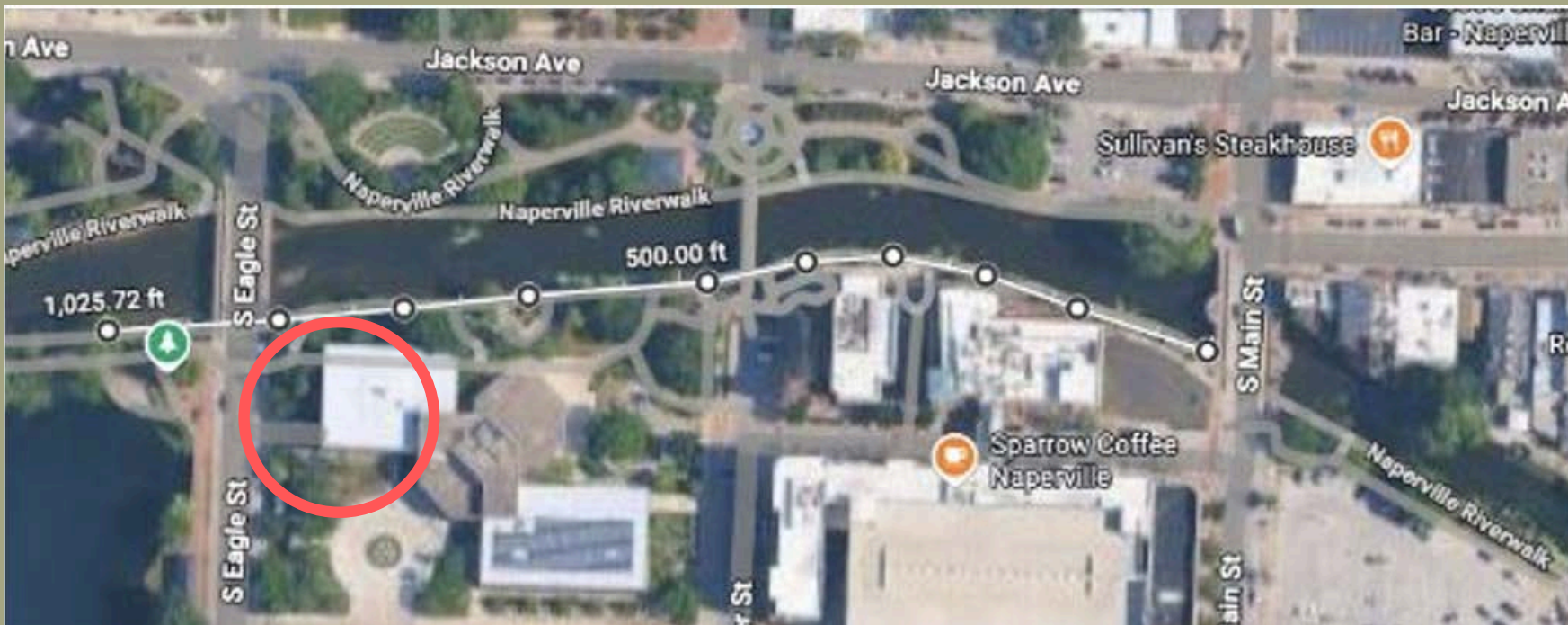
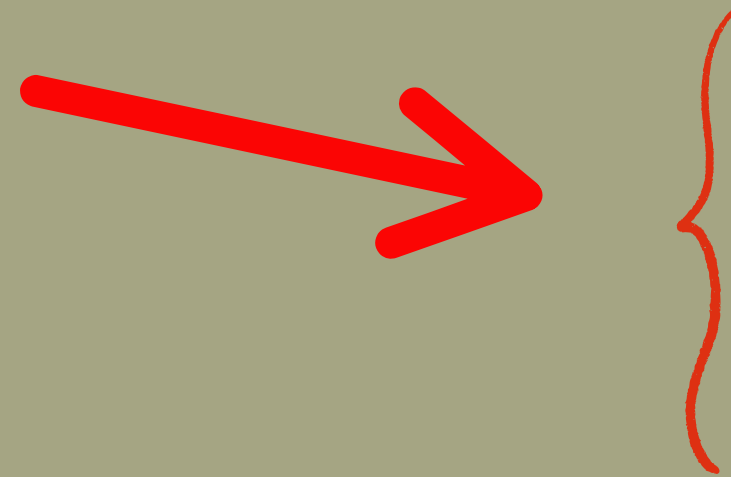


Slopes: Across the river

5% slope ~ 8.75%

No rails

Great big space!



General Maintenance



2.43 in



Width of Pathways

ADA standards require at
least a minimum of 36 inches

(Stark, S., & Gray, D. B., n.d.).



30.69 in



35.18 in



Naperville Resident



- Level of comfortability
- Maneuvering
- Width
- Close proximity

References

City of Naperville. (n.d.). Services and resources for people with disabilities. <https://www.naperville.il.us/services/accessibility-resources/>

City of Naperville. (n.d.). Accessible community task force. <https://www.naperville.il.us/government/taskforces/accessible-community-task-force/>

Google. (n.d.). [Map of Chicago Avenue entrance to Eagle Street Gateway, Naperville Riverwalk] [Google Maps]. Retrieved February 4, 2026, from <https://www.google.com/maps>

PN Photo. (2025). Construction crews are finishing up the Eagle Street Gateway. [Photograph]. Positively Naperville.

<https://www.positivelynaperville.com/2025/03/27/updated-again-riverwalk-eagle-street-gateway-project-set-to-be-dedicated-nov-14/148204>

Stark, S., & Gray, D. B. (n.d.). Community Health Environment Checklist–Mobility (CHEC-M). Washington University in St. Louis, Program in Occupational Therapy. <https://www.ot.wustl.edu/about/resources/chec-m-393>

U.S. Access Board. (n.d.). ADA accessibility standards. <https://www.access-board.gov/ada/>