



Land Planning  
Landscape Architecture  
Environmental Site Design

132 N. WASHINGTON ST. - NAPERVILLE, IL 60540 - 630.305.9880 Fax 630.305.9994

project:

# The Compass Church South Naperville Campus

103rd St. & Route 59  
Naperville, Illinois

sheet description:

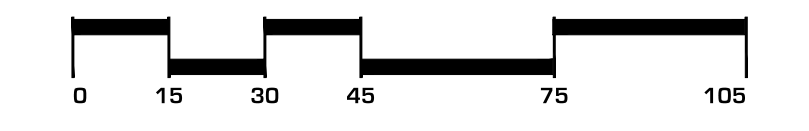
## Final Landscape Plan

## Fence Variance Exhibit

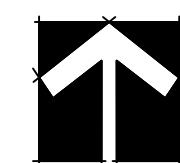
client:

**5.1.2020**

Glenn H. Johnson Construction  
1776 Winthrop Drive  
Des Plaines, IL 60018



north: scale: 1" = 30'0"



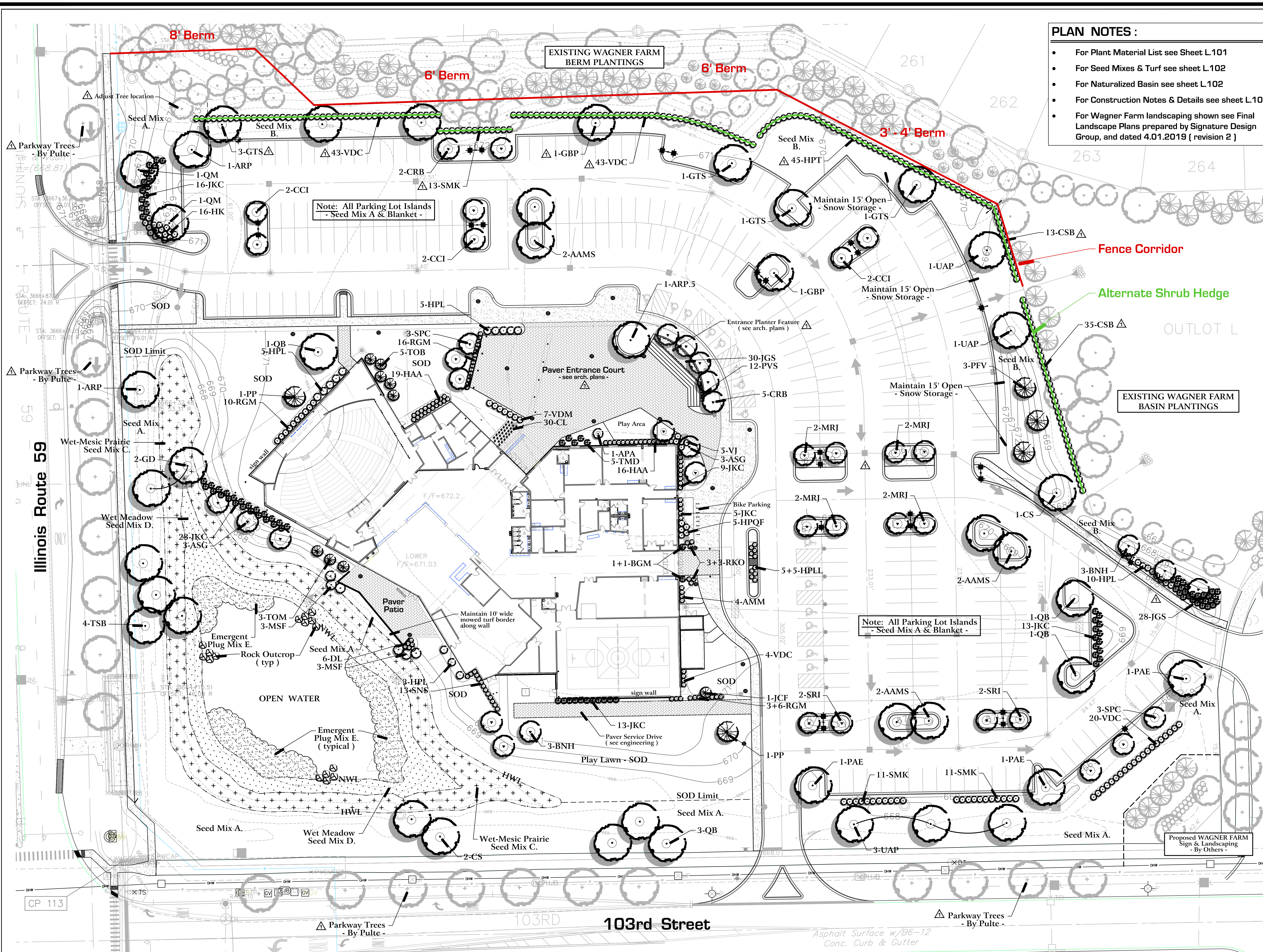
revisions: 3.4.2020 Per City Review Comments dated 2.26.2020

original issue date: 3 February 2020

drawn by: \_\_\_\_\_  
checked by: \_\_\_\_\_  
project no.: 29028  
sheet no.: \_\_\_\_\_

### PLAN NOTES :

- For Plant Material List see Sheet L.101
- For Seed Mixes & Turf see sheet L.102
- For Naturalized Basin see sheet L.102
- For Construction Notes & Details see sheet L.101
- For Wagner Farm landscaping shown see Final Landscape Plans prepared by Signature Design Group, and dated 4.01.2019 ( revision 2 )



Site Plan : Architectural Site Plan as provided by Pasma Group Architects, and undated.  
Engineering Base Sheet as provided by CEMCON, Ltd and dated 1.17.2020.