

**LEGAL DESCRIPTION OF CITY PARCEL:**

That part of the Northwest Quarter of Section 16, Township 38North, Range 9East of the Third Principal Meridian, in DuPage County, Illinois, bearings and distances are based on the Illinois Coordinate System, NAD 83(2011) East Zone, with a combination factor of 0.9999464926, described as follows: Commencing at the northwest corner of the Northwest Quarter of said Section 16; thence on an Illinois Coordinate System NAD 83(2011) East Zone bearing of South 0degrees 08minutes 00seconds West along the west line of the Northwest Quarter of said Section 16, a distance of 721.34 feet to the center line of North Aurora Road; thence South 89 degrees 53 minutes 03 seconds East along the center line of North Aurora Road, a distance of 1585.87 feet to the northwest corner of the grantor according to special warranty deed recorded August 2, 2005 as document number R2005-167219 and the point of beginning; thence continuing South 89 degrees 53 minutes 03 seconds East along the center line of North Aurora Road, a distance of 684.37 feet to the northeast corner of the grantor, according to said special warranty deed; thence South 2 degrees 42 minutes 47 seconds West along the east line of the grantor, according to said special warranty deed and along the west line of Lot 1 in Owens-Connell Resubdivision recorded December 18, 1990 as document number R90-171947, a distance of 70.04 feet; thence North 89 degrees 54 minutes 05 seconds West, a distance of 53.76 feet; thence South 0 degrees 05 minutes 55 seconds West, a distance of 10.00 feet; thence North 89 degrees 54 minutes 05 seconds West, a distance of 126.41 feet; thence North 0 degrees 12 minutes 39 seconds West, a distance of 10.00 feet; thence North 89 degrees 54 minutes 05 seconds West, a distance of 504.16 feet to the west line of the grantor, according to said special warranty deed; thence North 2 degrees 42 minutes 47 seconds East along the west line of the grantor, according to said special warranty deed, a distance of 70.25 feet to the point of beginning.

Said parcel containing 1.130 acres, more or less, of which 0.518 acre, more or less, was previously dedicated or used for highway purposes.

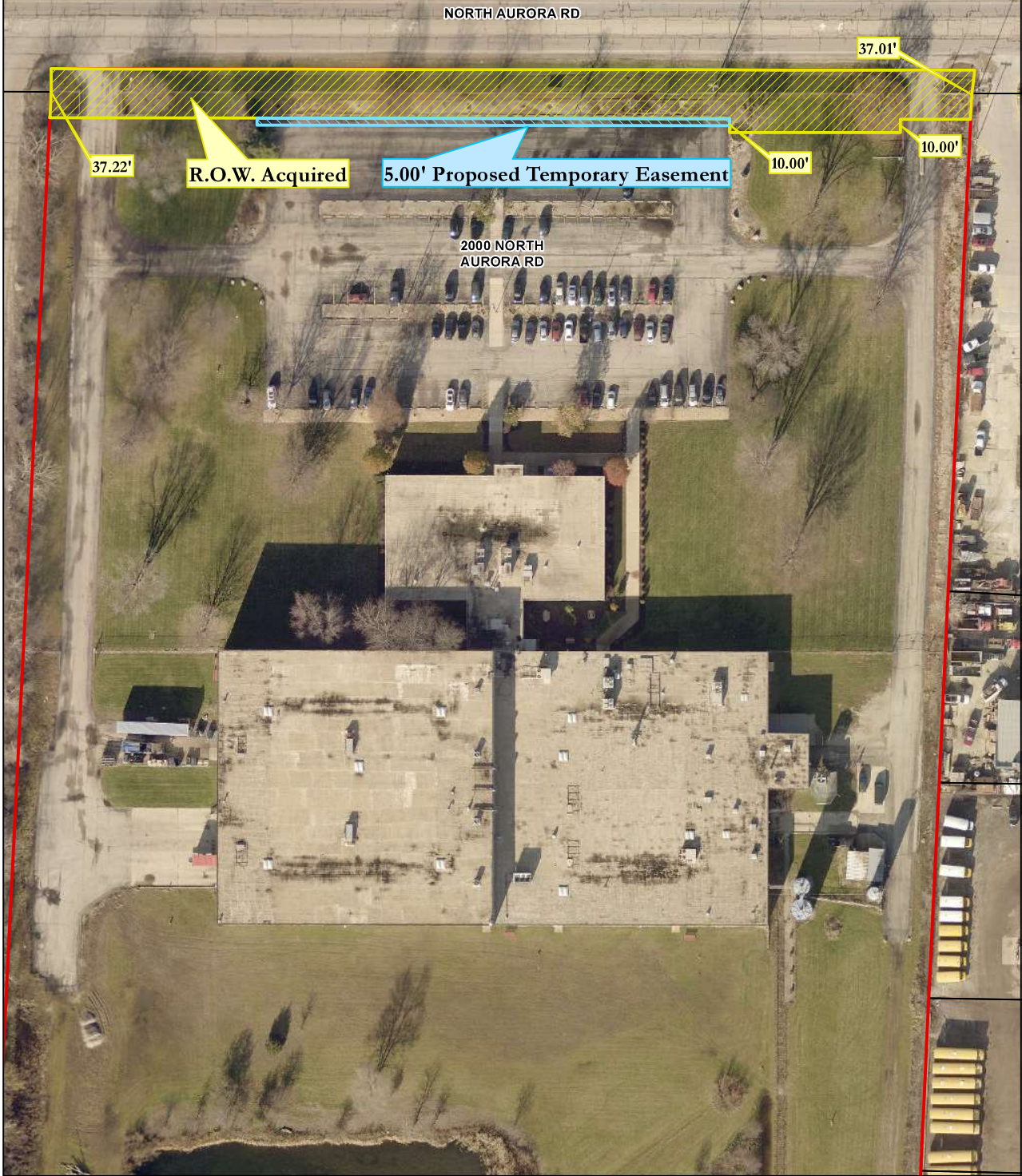
Index No. 07-16-101-006

**LEGAL DESCRIPTION OF THE TEMPORARY CONSTRUCTION EASEMENT:**

That part of the Northwest Quarter of Section 16, Township 38North, Range 9East of the Third Principal Meridian, in DuPage County, Illinois, bearings and distances are based on the Illinois Coordinate System, NAD 83(2011) East Zone, with a combination factor of 0.9999464926, described as follows: Commencing at the northwest corner of the Northwest Quarter of said Section 16; thence on an Illinois Coordinate System NAD 83(2011) East Zone bearing of South 0degrees 08minutes 00seconds West along the west line of the Northwest Quarter of said Section 16, a distance of 721.34 feet to the center line of North Aurora Road; thence South 89 degrees 53 minutes 03 seconds East along the center line of North Aurora Road, a distance of 1585.87 feet to the northwest corner of the grantor according to special warranty deed recorded August 2, 2005 as document number R2005-167219; thence continuing South 89 degrees 53 minutes 03 seconds East along the center line of North Aurora Road, a distance of 684.37 feet to the northeast corner of the grantor, according to said special warranty deed; thence South 2 degrees 42 minutes 47 seconds West along the east line of the grantor, according to said special warranty deed and along the west line of Lot 1 in Owens-Connell Resubdivision recorded December 18, 1990 as document number R90-171947, a distance of 70.04 feet; thence North 89 degrees 54 minutes 05 seconds West, a distance of 53.76 feet; thence South 0 degrees 05 minutes 55 seconds West, a distance of 10.00 feet; thence North 89 degrees 54 minutes 05 seconds West, a distance of 126.41 feet; thence North 0 degrees 12 minutes 39 seconds West, a distance of 5.00 feet to the point of beginning; thence continuing North 0 degrees 12 minutes 39 seconds West, a distance of 5.00 feet; thence North 89 degrees 54 minutes 05 seconds West, a distance of 347.76 feet; thence South 0 degrees 05 minutes 55 seconds West, a distance of 5.00 feet; thence South 89 degrees 54 minutes 05 seconds East, a distance of 347.79 feet to the point of beginning.

Said temporary easement containing 0.040 acre, more or less. Said temporary easement to be used for construction purposes.

Index No. 07-16-101-006



Transportation, Engineering and Development Business Group  
 Questions Contact (630) 426-6100  
 www.naperville.il.us  
 Date: 8/10/2020

**Exhibit C**  
**LEGAL DESCRIPTION AND DEPICTION OF CITY PARCEL & TEMPORARY EASEMENT**  
 2000 N. Aurora Rd (Hanson)

This map should be used for reference only. The data is subject to change without notice. City of Naperville assumes no liability in the use or application of the data. Reproduction or redistribution is forbidden without expressed written consent from the City of Naperville.

