

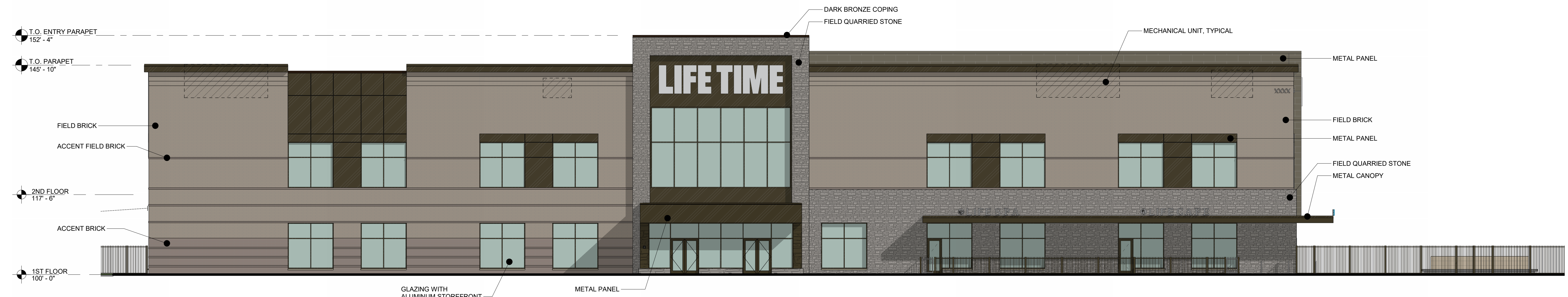
4 EXTERIOR ELEVATION - WEST
3/32" = 1'-0"



3 EXTERIOR ELEVATION - SOUTH
3/32" = 1'-0"



2 EXTERIOR ELEVATION - EAST
3/32" = 1'-0"



1 EXTERIOR ELEVATION - NORTH
3/32" = 1'-0"

NAPERVILLE, IL E-BOX PLUS

EXTERIOR BUILDING ELEVATION MATERIAL TABLE:

NORTH BUILDING ELEVATION -

INCLUDED MATERIAL						EXCLUDED MATERIAL	TOTALS	
BRICK		STONE		MTL PANEL		WDW/DOOR		
5,459 SF	57%	1,871 SF	19%	2,322 SF	24%	2,604 SF	2,604 SF	21%
							9,652 SF	79%

EAST BUILDING ELEVATION -

INCLUDED MATERIAL						EXCLUDED MATERIAL	TOTALS	
BRICK		STONE		MTL PANEL		WDW/DOOR		
7,234 SF	80%	172 SF	2%	1,654 SF	18%	800 SF	800 SF	8%
							9,060 SF	92%

SOUTH BUILDING ELEVATION -

INCLUDED MATERIAL						EXCLUDED MATERIAL	TOTALS	
BRICK		STONE		MTL PANEL		WDW/DOOR		
5,022 SF	48%	00 SF	0%	5,440 SF	52%	1,622 SF	1,622 SF	13%
							10,462 SF	87%

WEST BUILDING ELEVATION -

INCLUDED MATERIAL						EXCLUDED MATERIAL	TOTALS	
BRICK		STONE		MTL PANEL		WDW/DOOR		
4,849 SF	53%	1,084 SF	12%	3,163 SF	35%	1,038 SF	1,038 SF	10%
							9,096 SF	90%