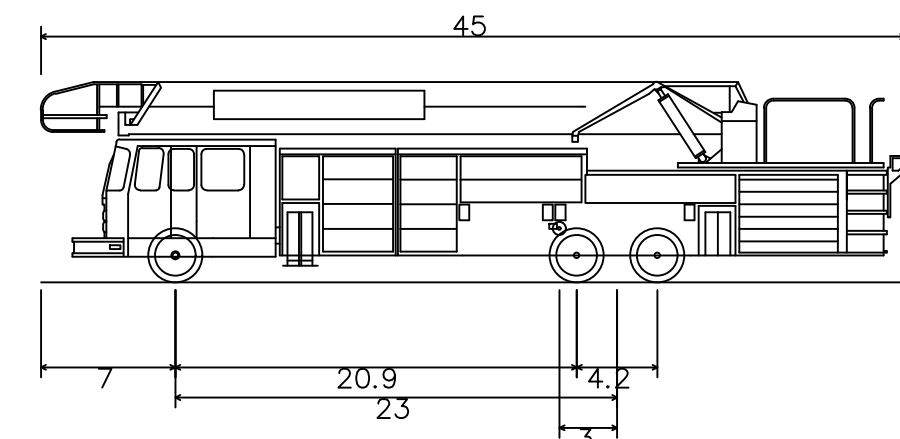
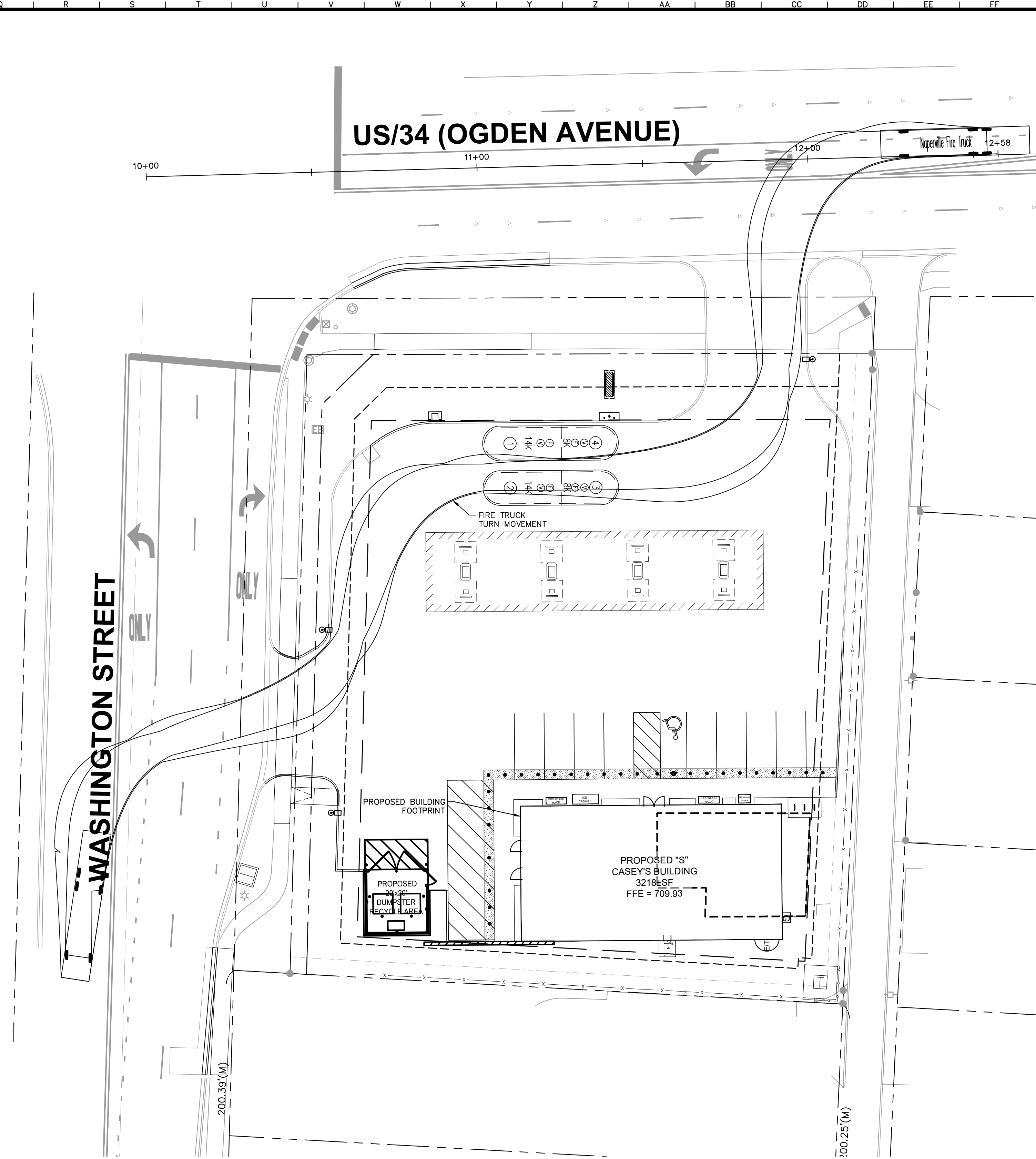
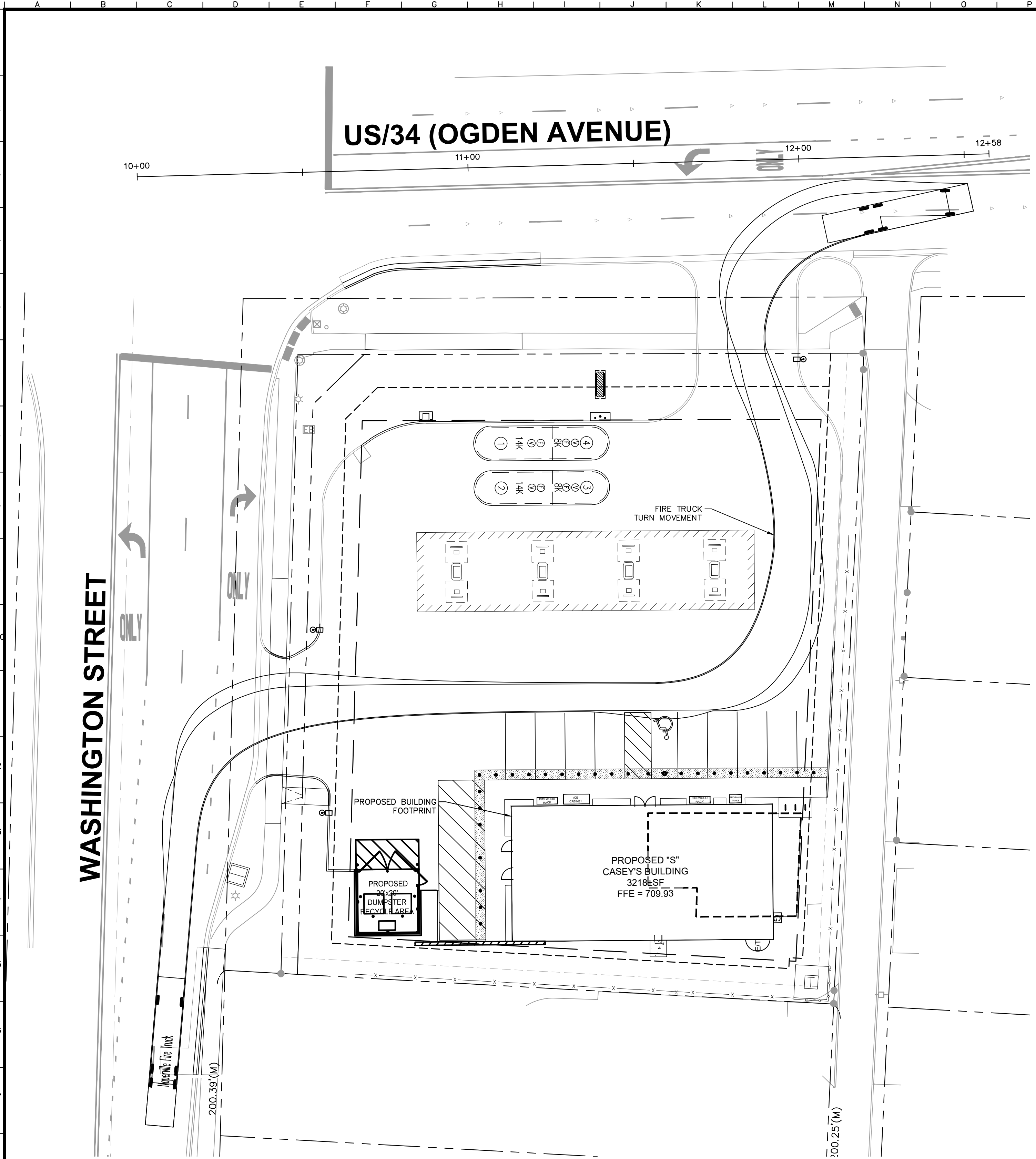
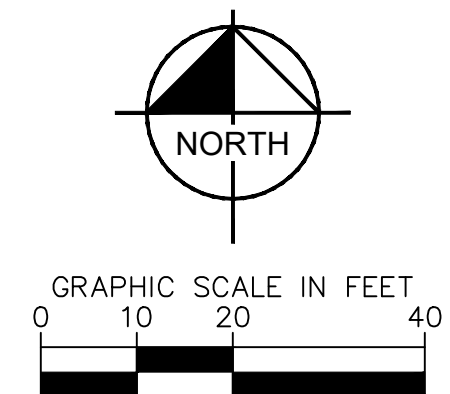


was prepared. Reuse of and improper reliance on this document without written authorization and adaptation by Kimley-Horn and Associates, Inc. shall be without liability to Kimley-Horn and Associates, Inc.



Naperville Fire Truck	
Overall Length	45.000ft
Overall Width	8.500ft
Overall Body Height	10.432ft
Min Body Ground Clearance	0.862ft
Track Width	8.000ft
Lock-to-lock time	6.00s
Max Steering Angle (Virtual)	35.00°

[illegible]