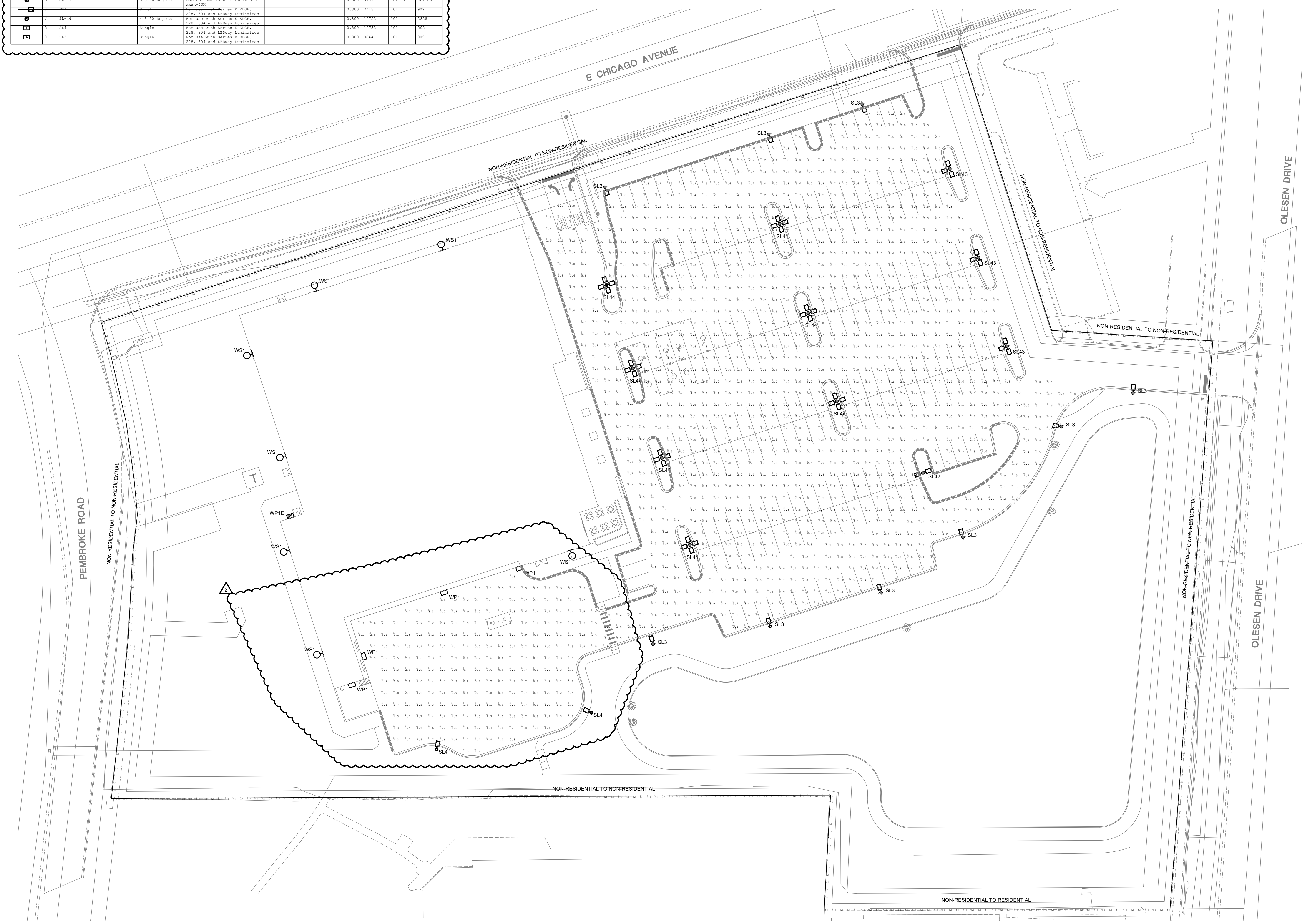


| Calculation Summary | Category | Units | Req | Min | Max | Actual |
|----------------------------|--------------|-------|------|-----|-----|--------|
| Level at Front of Building | illumination | fc | 5.0 | 2.0 | 2.0 | 2.0 |
| Entrance Area | illumination | fc | 10.0 | 5.0 | 5.0 | 5.0 |
| Walk Parking Area | illumination | fc | 3.5 | 1.5 | 1.5 | 1.5 |
| Open Drive Aisle | illumination | fc | 2.0 | 1.0 | 1.0 | 1.0 |

| Luminaire Schedule | Qty | Label | Arrangement | Description | SPR | MF | Footcandle Density | Luminaire Watts | Total Watts |
|--------------------|-----|-------|---------------|---|-------|-------|-----------------------|--------------------|----------------|
| 1 | 1 | SL-42 | Single | For use with Series E EDGE, 250, 104 and 10753 luminaires | 0.800 | 10753 | 101 | 101 | 101 |
| 1 | 1 | SL-43 | Back-back | For use with Series E EDGE, 250, 104 and 10753 luminaires | 0.800 | 10753 | 101 | 101 | 202 |
| 1 | 1 | SL-43 | 3 @ 90 degree | For use with Series E EDGE, 250, 104 and 10753 luminaires | 0.800 | 10753 | 101 | 101 | 303 |
| 1 | 1 | SL-44 | Single | For use with Series E EDGE, 250, 104 and 10753 luminaires | 0.800 | 10753 | 101 | 101 | 101 |
| 1 | 1 | SL-44 | 3 @ 90 degree | For use with Series E EDGE, 250, 104 and 10753 luminaires | 0.800 | 10753 | 101 | 101 | 303 |
| 1 | 1 | SL-44 | Single | For use with Series E EDGE, 250, 104 and 10753 luminaires | 0.800 | 10753 | 101 | 101 | 101 |
| 1 | 1 | SL-43 | Single | For use with Series E EDGE, 250, 104 and 10753 luminaires | 0.800 | 10753 | 101 | 101 | 101 |

- THE SITE LIGHTING IS DESIGNED TO MEET THE FOLLOWING CRITERIA EXCEPT WHERE LIMITED BY SITE CONSTRAINTS AND LOCAL REQUIREMENTS:
 - AVG MAINTAINED HORIZONTAL ILLUMINATION LEVEL AT FINISHED GRADE NO LESS THAN 3.6 FC AT TRUCKWELL, RAMPS, STAIRS, EXTERIOR DINING, CANOPY AND MAIN ENTRY/EXIT AREAS.
 - AVG MAINTAINED HORIZONTAL ILLUMINATION LEVEL AT FINISHED GRADE NO LESS THAN 3.6 FC AT THE FRONT ENTRY AND FIRELANE AREA.
 - AVG MAINTAINED HORIZONTAL ILLUMINATION LEVEL AT FINISHED GRADE NO LESS THAN 3.6 FC AT THE REAR PAVED AREAS AND DRIVE AISLES.
 - AVG MAINTAINED HORIZONTAL ILLUMINATION LEVEL AT FINISHED GRADE NO LESS THAN 3.6 FC AT THE FRONT PARKING AREAS.
 - AVG MAINTAINED HORIZONTAL ILLUMINATION LEVEL AT FINISHED GRADE NO LESS THAN 3.6 FC AT THE REAR PAVED AREAS AND DRIVE AISLES.
 - MINIMUM MAINTAINED HORIZONTAL ILLUMINATION LEVEL AT FINISHED GRADE OF 0.9 FC AT ALL PAVED PARKING AND WALKING SURFACES.
 - UNIFORMITY RATIO FOR EACH AREA SHALL BE LESS THAN 4:1.
- PHOTOMETRIC CALCULATION GRID SHALL NOT EXCEED A 10' X 10' SPACING.
- THE TOTAL LIGHT LOSS FACTOR USED FOR THE CALCULATIONS SHALL BE .85 OF INITIAL LUMEN OUTPUT FOR LED SOURCES.
- MAXIMUM LUMINAIRE MOUNTING HEIGHT (INCLUDING POLE AND BASE) OF 25' ABOVE FINISHED GRADE.



1 SITE LIGHTING PHOTOMETRICS
1"=30'-0"

THE EDGE® Series
 LED Area/Flood Luminaire

Product Description
 The EDGE® Series is a high performance lighting fixture designed for use in a variety of applications. It features a compact design and is available in multiple sizes and finishes. The fixture is designed to provide uniform illumination and is suitable for use in both indoor and outdoor environments.

Performance Summary
 Approved in the USA by the IESNA and the IESNA Illuminance and Footcandle Standards. The fixture is designed to provide uniform illumination and is suitable for use in both indoor and outdoor environments.

Accessories
 The fixture is available with a variety of accessories, including different mounting options and finishes. The accessories are designed to provide additional functionality and flexibility to the fixture.

Ordering Information
 The fixture is ordered by specifying the luminaire type, size, and finish. The ordering information is provided in the tables below.

| Product | Part No. | Mounting | Color | Options |
|------------|----------|----------|-------|---------|
| SL-3 | SL-3-01 | DL Mount | Black | None |
| SL-4,43,44 | SL-4-01 | DL Mount | Black | None |

CREE LIGHTING

THE EDGE® LED Area/Flood Luminaire

Product Specifications
 The fixture is designed to provide uniform illumination and is suitable for use in both indoor and outdoor environments. It features a compact design and is available in multiple sizes and finishes.

Performance Summary
 Approved in the USA by the IESNA and the IESNA Illuminance and Footcandle Standards. The fixture is designed to provide uniform illumination and is suitable for use in both indoor and outdoor environments.

Accessories
 The fixture is available with a variety of accessories, including different mounting options and finishes. The accessories are designed to provide additional functionality and flexibility to the fixture.

Ordering Information
 The fixture is ordered by specifying the luminaire type, size, and finish. The ordering information is provided in the tables below.

| Product | Part No. | Mounting | Color | Options |
|------------|----------|----------|-------|---------|
| SL-3 | SL-3-01 | DL Mount | Black | None |
| SL-4,43,44 | SL-4-01 | DL Mount | Black | None |

CREE LIGHTING

THE EDGE® LED Area/Flood Luminaire

Product Description
 The fixture is designed to provide uniform illumination and is suitable for use in both indoor and outdoor environments. It features a compact design and is available in multiple sizes and finishes.

Performance Summary
 Approved in the USA by the IESNA and the IESNA Illuminance and Footcandle Standards. The fixture is designed to provide uniform illumination and is suitable for use in both indoor and outdoor environments.

Accessories
 The fixture is available with a variety of accessories, including different mounting options and finishes. The accessories are designed to provide additional functionality and flexibility to the fixture.

Ordering Information
 The fixture is ordered by specifying the luminaire type, size, and finish. The ordering information is provided in the tables below.

| Product | Part No. | Mounting | Color | Options |
|------------|----------|----------|-------|---------|
| SL-3 | SL-3-01 | DL Mount | Black | None |
| SL-4,43,44 | SL-4-01 | DL Mount | Black | None |

CREE LIGHTING

THE EDGE® Series
 LED Security Wall Pack Luminaire

Product Description
 The EDGE® Series is a high performance lighting fixture designed for use in a variety of applications. It features a compact design and is available in multiple sizes and finishes. The fixture is designed to provide uniform illumination and is suitable for use in both indoor and outdoor environments.

Performance Summary
 Approved in the USA by the IESNA and the IESNA Illuminance and Footcandle Standards. The fixture is designed to provide uniform illumination and is suitable for use in both indoor and outdoor environments.

Accessories
 The fixture is available with a variety of accessories, including different mounting options and finishes. The accessories are designed to provide additional functionality and flexibility to the fixture.

Ordering Information
 The fixture is ordered by specifying the luminaire type, size, and finish. The ordering information is provided in the tables below.

| Product | Part No. | Mounting | Color | Options |
|------------|----------|----------|-------|---------|
| SL-3 | SL-3-01 | DL Mount | Black | None |
| SL-4,43,44 | SL-4-01 | DL Mount | Black | None |

CREE LIGHTING

THE EDGE® LED Security Wall Pack Luminaire

Product Description
 The fixture is designed to provide uniform illumination and is suitable for use in both indoor and outdoor environments. It features a compact design and is available in multiple sizes and finishes.

Performance Summary
 Approved in the USA by the IESNA and the IESNA Illuminance and Footcandle Standards. The fixture is designed to provide uniform illumination and is suitable for use in both indoor and outdoor environments.

Accessories
 The fixture is available with a variety of accessories, including different mounting options and finishes. The accessories are designed to provide additional functionality and flexibility to the fixture.

Ordering Information
 The fixture is ordered by specifying the luminaire type, size, and finish. The ordering information is provided in the tables below.

| Product | Part No. | Mounting | Color | Options |
|------------|----------|----------|-------|---------|
| SL-3 | SL-3-01 | DL Mount | Black | None |
| SL-4,43,44 | SL-4-01 | DL Mount | Black | None |

CREE LIGHTING

THE EDGE® LED Area/Flood Luminaire

Product Description
 The fixture is designed to provide uniform illumination and is suitable for use in both indoor and outdoor environments. It features a compact design and is available in multiple sizes and finishes.

Performance Summary
 Approved in the USA by the IESNA and the IESNA Illuminance and Footcandle Standards. The fixture is designed to provide uniform illumination and is suitable for use in both indoor and outdoor environments.

Accessories
 The fixture is available with a variety of accessories, including different mounting options and finishes. The accessories are designed to provide additional functionality and flexibility to the fixture.

Ordering Information
 The fixture is ordered by specifying the luminaire type, size, and finish. The ordering information is provided in the tables below.

| Product | Part No. | Mounting | Color | Options |
|------------|----------|----------|-------|---------|
| SL-3 | SL-3-01 | DL Mount | Black | None |
| SL-4,43,44 | SL-4-01 | DL Mount | Black | None |

CREE LIGHTING

THE EDGE® LED Area/Flood Luminaire

Product Description
 The fixture is designed to provide uniform illumination and is suitable for use in both indoor and outdoor environments. It features a compact design and is available in multiple sizes and finishes.

Performance Summary
 Approved in the USA by the IESNA and the IESNA Illuminance and Footcandle Standards. The fixture is designed to provide uniform illumination and is suitable for use in both indoor and outdoor environments.

Accessories
 The fixture is available with a variety of accessories, including different mounting options and finishes. The accessories are designed to provide additional functionality and flexibility to the fixture.

Ordering Information
 The fixture is ordered by specifying the luminaire type, size, and finish. The ordering information is provided in the tables below.

| Product | Part No. | Mounting | Color | Options |
|------------|----------|----------|-------|---------|
| SL-3 | SL-3-01 | DL Mount | Black | None |
| SL-4,43,44 | SL-4-01 | DL Mount | Black | None |

CREE LIGHTING

THE EDGE® LED Area/Flood Luminaire

Product Description
 The fixture is designed to provide uniform illumination and is suitable for use in both indoor and outdoor environments. It features a compact design and is available in multiple sizes and finishes.

Performance Summary
 Approved in the USA by the IESNA and the IESNA Illuminance and Footcandle Standards. The fixture is designed to provide uniform illumination and is suitable for use in both indoor and outdoor environments.

Accessories
 The fixture is available with a variety of accessories, including different mounting options and finishes. The accessories are designed to provide additional functionality and flexibility to the fixture.

Ordering Information
 The fixture is ordered by specifying the luminaire type, size, and finish. The ordering information is provided in the tables below.

| Product | Part No. | Mounting | Color | Options |
|------------|----------|----------|-------|---------|
| SL-3 | SL-3-01 | DL Mount | Black | None |
| SL-4,43,44 | SL-4-01 | DL Mount | Black | None |

CREE LIGHTING

THE EDGE® LED Security Wall Pack Luminaire

Product Description
 The fixture is designed to provide uniform illumination and is suitable for use in both indoor and outdoor environments. It features a compact design and is available in multiple sizes and finishes.

Performance Summary
 Approved in the USA by the IESNA and the IESNA Illuminance and Footcandle Standards. The fixture is designed to provide uniform illumination and is suitable for use in both indoor and outdoor environments.

Accessories
 The fixture is available with a variety of accessories, including different mounting options and finishes. The accessories are designed to provide additional functionality and flexibility to the fixture.

Ordering Information
 The fixture is ordered by specifying the luminaire type, size, and finish. The ordering information is provided in the tables below.

| Product | Part No. | Mounting | Color | Options |
|------------|----------|----------|-------|---------|
| SL-3 | SL-3-01 | DL Mount | Black | None |
| SL-4,43,44 | SL-4-01 | DL Mount | Black | None |

CREE LIGHTING

THE EDGE® LED Security Wall Pack Luminaire

Product Description
 The fixture is designed to provide uniform illumination and is suitable for use in both indoor and outdoor environments. It features a compact design and is available in multiple sizes and finishes.

Performance Summary
 Approved in the USA by the IESNA and the IESNA Illuminance and Footcandle Standards. The fixture is designed to provide uniform illumination and is suitable for use in both indoor and outdoor environments.

Accessories
 The fixture is available with a variety of accessories, including different mounting options and finishes. The accessories are designed to provide additional functionality and flexibility to the fixture.

Ordering Information
 The fixture is ordered by specifying the luminaire type, size, and finish. The ordering information is provided in the tables below.

| Product | Part No. | Mounting | Color | Options |
|------------|----------|----------|-------|---------|
| SL-3 | SL-3-01 | DL Mount | Black | None |
| SL-4,43,44 | SL-4-01 | DL Mount | Black | None |

CREE LIGHTING

| LIGHT FIXTURE SCHEDULE (SITE) | | | | | | | | | | | | | |
|-------------------------------|--------------|-----------------------------------|---------------------|--------|-----|--------|--------|--------------|---------|-------------|----------|--|-------|
| TYPE | MANUFACTURER | SERIES / MODEL | APPROVED ALTERNATES | SOURCE | | | | DIMMING TYPE | VOLTAGE | INPUT WATTS | INPUT VA | DESCRIPTION | NOTES |
| | | | | TYPE | CRI | CCCT | LUMENS | | | | | | |
| SL3 | CREE | ARE-EDG 3MB DA 08 E UL B2 525 40K | LITHONIA | LED | 70 | 4,000K | 9,844 | NON-DIM | 277 | 133 | 136 | SINGLE HEAD POLE MOUNTED LED PARKING LOT FIXTURE, TYPE III DISTRIBUTION, FULLY SEALED AND GASKETED AND FACTORY BRONZE FINISH. | |
| SL4 | CREE | ARE-EDG 4M DA 06 E UL B2 525 40K | LITHONIA | LED | 70 | 4,000K | 10,753 | NON-DIM | 277 | 101 | 103 | 22'-0" TALL STRAIGHT SQUARE POLE - FACTORY BRONZE. POLE THICKNESS/GAUGE AS REQUIRED TO MEET COMPLETE LUMINAIRE/POLE ASSEMBLY REQUIREMENTS FOR LOCAL SITE CONDITIONS. | |
| SL42 | CREE | ARE-EDG 4M DA 06 E UL B2 525 40K | LITHONIA | LED | 70 | 4,000K | 10,793 | NON-DIM | 277 | 202 | 206 | DUAL HEAD 180 DEGREE POLE MOUNTED LED PARKING LOT FIXTURE, TYPE IV DISTRIBUTION, FULLY SEALED AND GASKETED AND FACTORY BRONZE FINISH. | |
| SL43 | CREE | ARE-EDG 4M DA 06 E UL B2 525 40K | LITHONIA | LED | 70 | 4,000K | 10,793 | NON-DIM | 277 | 303 | 309 | TRIPLE HEAD (3 @ 90) POLE MOUNTED LED PARKING LOT FIXTURE, TYPE IV DISTRIBUTION, FULLY SEALED AND GASKETED AND FACTORY BRONZE FINISH. | |
| SL44 | CREE | ARE-EDG 4M DA 06 E UL B2 525 40K | LITHONIA | LED | 70 | 4,000K | 10,753 | NON-DIM | 277 | 404 | 412 | QUAD HEAD POLE MOUNTED LED PARKING LOT FIXTURE, TYPE IV DISTRIBUTION, FULLY SEALED AND GASKETED AND FACTORY BRONZE FINISH. | |

GENERAL NOTES:
A. REFER TO LIGHT FIXTURE SCHEDULE GENERAL NOTES AND SPECIFICATIONS FOR ADDITIONAL INFORMATION.

NOTES:
1. NOT USED.

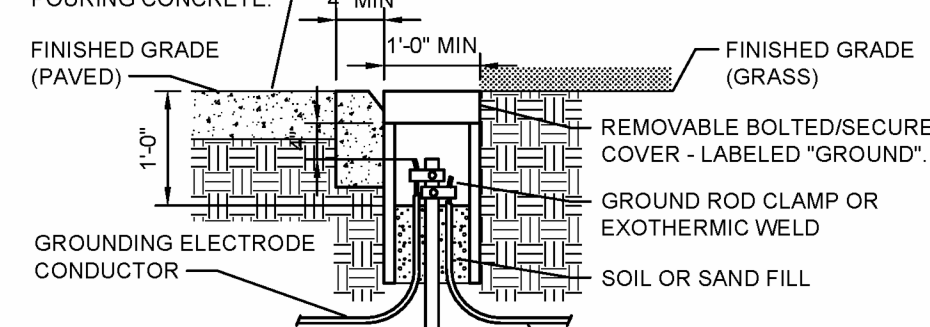
LIGHT FIXTURE SCHEDULE GENERAL NOTES:

- ALL LIGHT FIXTURES AND RELATED COMPONENTS SHALL BE PROVIDED BY THE CONTRACTOR, UNLESS NOTED OTHERWISE.
- THE SITE LIGHTING POLES SHALL MEET THE FOLLOWING MINIMUM STANDARD: THE COMPLETE LIGHTING STANDARD AND FOOTING SHALL BE DESIGNED TO WITHSTAND 100MPH WINDS WITH A 1.3 MPH GUST FACTOR. THE POLES SHALL BE HIGH STRENGTH STEEL OR ALUMINUM AND SHALL BE NON-BREAKAWAY TYPE, UNLESS NOTED OTHERWISE. POLES OVER 20' HIGH SHALL BE FACTORY FURNISHED WITH VIBRATION DAMPERS. POLE INSTALLATION SHALL COMPLY WITH ALL LOCAL REQUIREMENTS. POLE HEIGHTS SHALL BE FACTORY FURNISHED TO THE LENGTH LISTED IN THE LIGHT FIXTURE SCHEDULE TO ACHIEVE DESIRED HEAD MOUNTING HEIGHT. REFER TO POLE BASE DETAIL FOR ADDITIONAL INFORMATION.

TRAFFIC AREAS: PROVIDE POLYMER CONCRETE BOX AND COLLAR RING OR APPROVED ALTERNATE MATERIAL. REMOVABLE COVER SHALL BE REINFORCED CONCRETE, STEEL, CAST IRON OR APPROVED ALTERNATE MATERIAL. BOX, RING AND COVER SHALL HAVE A MINIMUM H-20 LOAD RATING AND SHALL BE SUITABLE FOR LOCATION.

NON-TRAFFIC AREAS: PROVIDE HIGH DENSITY POLYETHYLENE OR APPROVED ALTERNATE MATERIAL. BOX, RING AND COVER SHALL HAVE A MINIMUM ANSI 77 TIER 8 LOAD RATING AND SHALL BE SUITABLE FOR LOCATION.

USE SATURATED FELT PAPER AROUND COVER WHEN POURING CONCRETE.



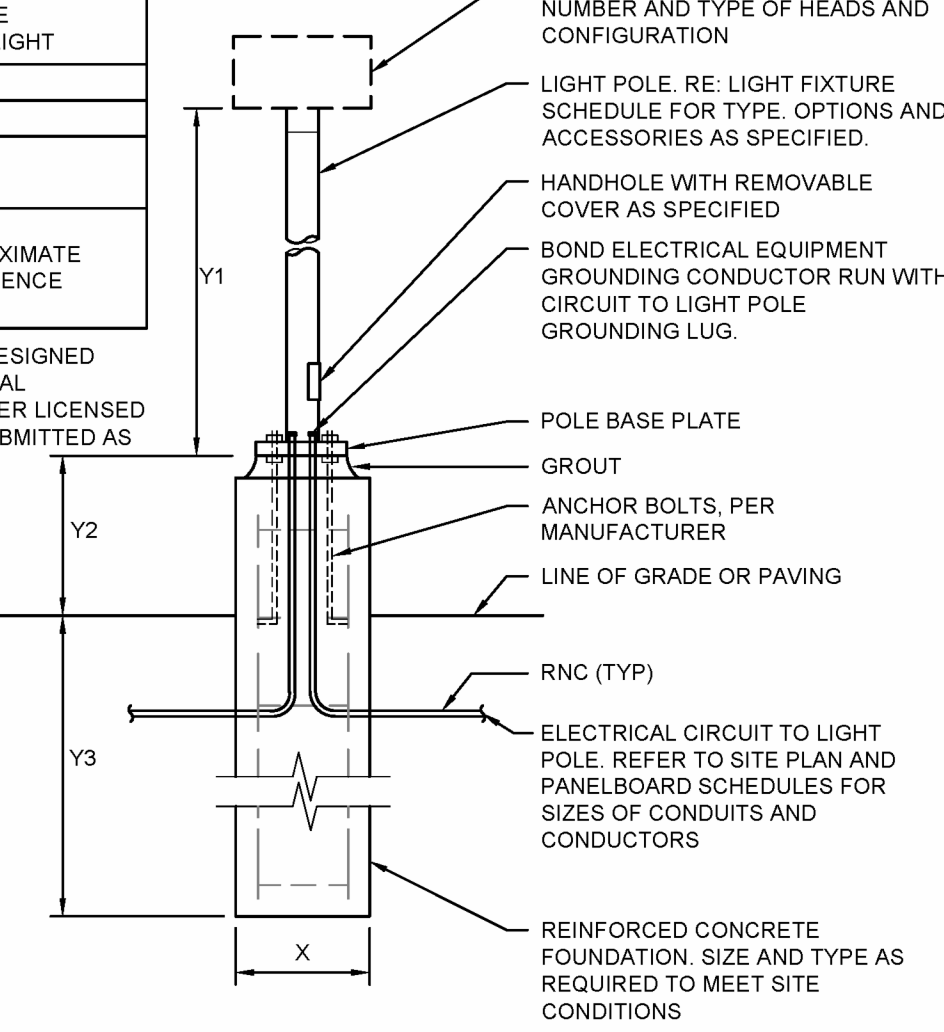
3 GROUNDING TEST WELL INSTALLATION
NO SCALE

TABLE OF DIMENSIONS

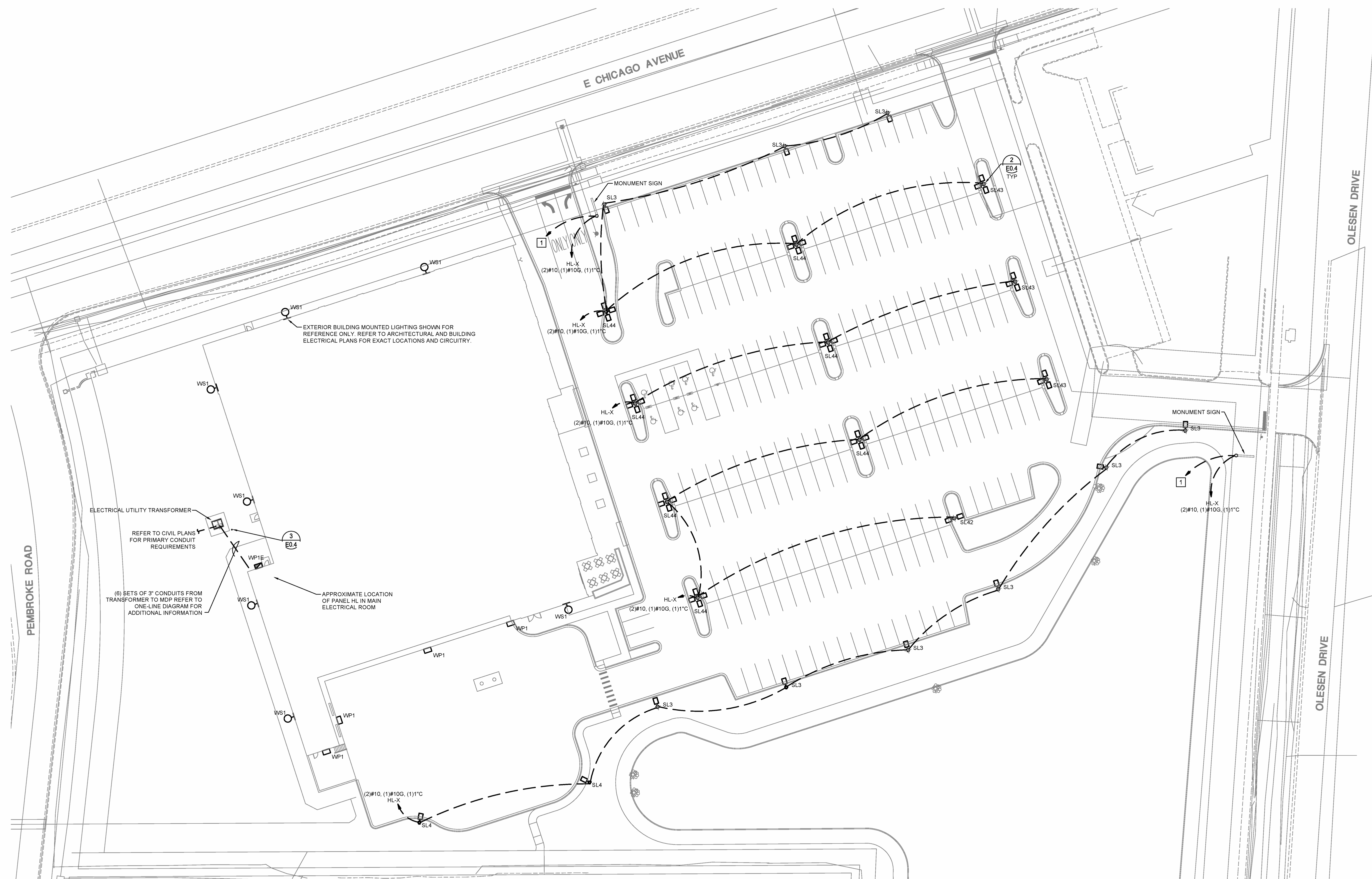
| | |
|----|---|
| X | POLE HEIGHT < 16' = 1'-6" |
| | POLE HEIGHT > 16' = 2'-0" |
| Y1 | REFER TO LIGHT FIXTURE SCHEDULE FOR POLE HEIGHT |
| Y2 | VEHICULAR AREAS - 3'-0" |
| Y3 | 1/4 OF POLE HEIGHT Y1 |

* NOTE: ALL DIMENSIONS ARE APPROXIMATE AND ARE SHOWN FOR REFERENCE ONLY.

POLE FOUNDATION SHALL BE DESIGNED AND SEALED BY A PROFESSIONAL STRUCTURAL OR CIVIL ENGINEER LICENSED IN THE PROJECT STATE AND SUBMITTED AS PART OF THE SUBMITTAL PROCESS.



2 POLE BASE DETAIL
NO SCALE



1 ELECTRICAL SITE PLAN
1"=30'-0"

ELECTRICAL SITE LIGHTING PLAN NOTES:

- PROVIDE 1" CONDUIT WITH PULL-STRING FROM POS ROOM TO FUTURE MONUMENT SIGN FOR CONTROL WIRING. COORDINATE EXACT REQUIREMENTS AND LOCATION WITH TENANT REPRESENTATIVE PRIOR TO ROUGH-IN.

ELECTRICAL SITE LIGHTING GENERAL NOTES:

- REFER TO CIVIL PLANS AND SPECIFICATIONS FOR ADDITIONAL SITE ELECTRICAL INFORMATION. COORDINATE THE EXACT LOCATION OF ALL SITE LIGHTING POLES, SIGNAGE, UNDERGROUND UTILITIES, TRANSFORMERS AND OTHER EQUIPMENT WITH CIVIL PLANS, LANDSCAPING PLANS AND OWNER/TENANT PRIOR TO INSTALLATION. REFER TO DETAIL S ON THIS SHEET FOR POLE BASE DETAIL.
- VERIFY ALL SITE ELECTRICAL REQUIREMENTS WITH EQUIPMENT IN FIELD AND ADJUST ELECTRICAL PROVISIONS AS REQUIRED TO MEET NEC AND OTHER LOCAL REQUIREMENTS.
- SITE ELECTRICAL CONDUITS SHALL BE 1" MINIMUM ROUTE UNDERSLAB CONDUITS NO LESS THAN 24" BELOW GRADE AND COORDINATE EXACT ROUTING WITH EXISTING OBSTRUCTIONS AND OTHER TRADES. CAP AND MARK ALL UNDERGROUND CONDUITS PROVIDED FOR FUTURE USE. PROVIDE DIMENSIONED LOCATIONS OF TERMINATION POINTS ON AS-BUILT DRAWINGS. EXISTING CONDUITS CAN BE REUSED IF IN GOOD CONDITION AND NEW DESIGN CRITERIA CAN BE MET.
- MINIMUM WIRE SIZE SHALL BE #10 AWG. ALL BRANCH CIRCUIT WIRING SHALL BE SIZED SUCH THAT THE MAXIMUM BRANCH CIRCUIT VOLTAGE DROP IS LESS THAN 3 PERCENT.
- LOCATE SPLICE AND PULL BOXES FOR SITE LIGHTING AND SITE ELECTRICAL POWER AT INTERVALS NO GREATER THAN 300'. PLACE BOXES IN A PLANTER AREA CLEAR OF VEGETATION WHEREVER PRACTICABLE. (COORDINATE EXACT LOCATION WITH LANDSCAPE CONTRACTOR AND OWNER). BOXES SHALL BE SUITABLE FOR LOCATION AND PROPERLY SIZED FOR QUANTITY AND SIZE OF CONDUITS IN AND OUT AND SHALL BE MARKED "ELECTRICAL". NOT ALL OF THESE BOXES ARE SHOWN ON SITE ELECTRICAL DRAWINGS. CONTRACTOR SHALL PROVIDE LOCATION ON AS-BUILT DRAWINGS. PROVIDE QUARTZITE SPLICE BOX MODEL# PC1212BA12 WITH COVER# PC1212H40029 OR EQUAL. SPLICE BOX SHALL BE APPROPRIATE FOR LOCATION AND SHALL BE INSTALLED PER MANUFACTURER'S RECOMMENDATIONS. SPLICE BOX SHALL HAVE A MINIMUM NOMINAL SIZE OF 12"X12"X12". SHALL BE AN OPEN BOTTOM UL LISTED UNDERGROUND ENCLOSURE, AND SHALL AT A MINIMUM BE TIER 15 TRAFFIC RATED.

HENDERSON ENGINEERS
8345 LENEKA DRIVE, SUITE 300
LENEXA, KS 66214
TEL 913.742.5200 FAX 913.742.5201
WWW.HENDERSONENGINEERS.COM

235001109
IL CORPORATE NUMBER: 184-002965
045025

adk

ADOK, INC. - ILL. 1438 Olesen Avenue, Naperville, OH 44107 - (P. 216.771.1820) - (F. 216.771.1797) - (M. www.adokinc.com)

ARCHITECTURE OFFICE - DAVID KREIBER

EXPIRES ON: 11/30/2025

DEAN WAY CHANDLER
062.069525
STATE OF ILLINOIS

06/11/2024

heimens
NAPERVILLE, IL

PROJECT TITLE:
PROJECT:
SHELL SET 06.10.2024

THESE DRAWINGS, DESIGN, CONCEPT AND INFORMATION ARE THE EXCLUSIVE PROPERTY OF ADOK, INC. THEY ARE FOR CONSTRUCTION ONLY AT THE SITE INDICATED. UNAUTHORIZED USE, ALTERATION OR REPRODUCTION OF THE DOCUMENTS AND DESIGN IS PROHIBITED WITHOUT WRITTEN PERMISSION FROM ADOK, INC.

22.25
ELECTRICAL SITE PLAN

E0.4