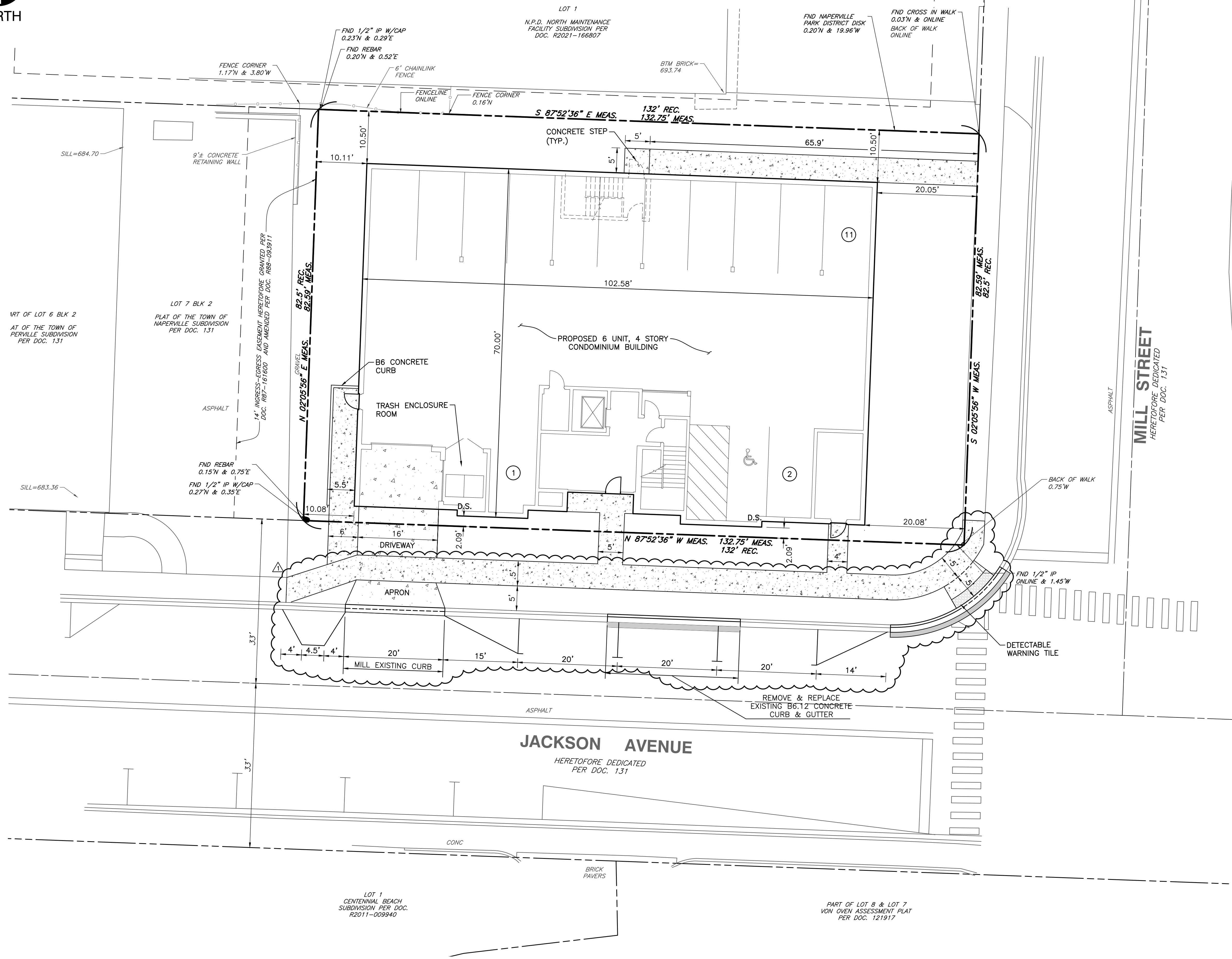


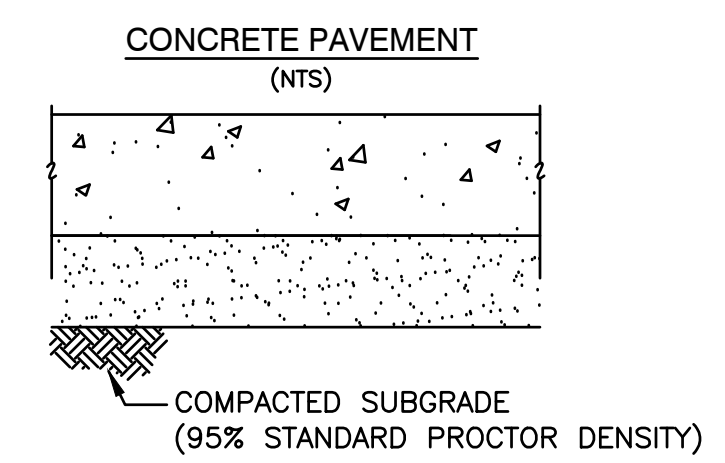
NORTH



415 JACKSON ST FAR CALCULATIONS
December 7, 2022

Site Area (82.69 x 132.75)	10,934 SF
GROUND FLOOR	
Lobby/Elevator/Stairwells	651 SF
Electrical/Sprinkler Rm	209 SF
Trash Area	117 SF
Total SF	977 SF
2ND FLOOR (Less Balconies)	
	6,680 SF
3RD FLOOR (Less Balconies)	
	6,680 SF
4TH FLOOR (Less Balconies)	
	6,680 SF
Total Occupied Area	20,040 SF
Ground Floor & Occupied Floors	
	21,017 SF
Alternate Basement Area	
	3,000 SF
FAR W/O BASEMENT	
	1.91
FAR WITH BASEMENT	
	2.19

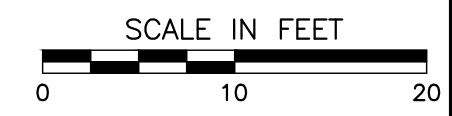
- DIMENSION NOTES**
- UNLESS OTHERWISE NOTED, ALL DIMENSIONS ARE TO THE BACK OF CURB. A MINIMUM OF 4 INCHES OF AGGREGATE BASE SHALL BE PLACED BENEATH ALL CURB AND GUTTER AND SHALL EXTEND 18 INCHES BEYOND BACK OF CURB.
 - FOR COMPLETE BUILDING DIMENSIONS, SEE ARCHITECTURAL PLANS.
 - EXISTING JACKSON AVENUE PAVEMENT MARKINGS ADJACENT TO THE SITE SHALL BE SCRUBBED. PROPOSED PARKING SPACES AND EDGE LINES SHALL BE 4" SOLID WHITE. CROSS WALK PAVEMENT MARKINGS SHALL BE RESTORED WITHIN THE CONSTRUCTION LIMITS.



- SIDEWALK**
- 4" PORTLAND CEMENT CONCRETE, CLASS SI (PUBLIC)
 - 4" PORTLAND CEMENT CONCRETE, CLASS SI (PRIVATE)
 - 2" COMPACTED CA-6 AGGREGATE BASE COURSE, TYPE B
- DRIVEWAY, SIDEWALK THROUGH DRIVEWAY APRON AND APRON**
- 8" PORTLAND CEMENT CONCRETE, CLASS SI
 - 4" COMPACTED CA-6 AGGREGATE BASE COURSE, TYPE B

- REFERENCE**
- EXISTING CONDITIONS ARE BASED UPON FIELD OBSERVATIONS MADE ON OCTOBER 10, 2022 BY CIVIL & ENVIRONMENTAL CONSULTANTS, INC.
 - FIELD DATUM: ILLINOIS STATE PLANE NSRS 2011, EAST ZONE- US SURVEY FOOT CITY OF NAPERVILLE DATUM NAVD 88.
 - UNDERGROUND UTILITY INFORMATION SHOWN HEREON IS BASED UPON FIELD OBSERVATIONS, ATLAS MAPS PROVIDED BY THE CITY OF NAPERVILLE AND THOSE PUBLIC UTILITY COMPANIES OPERATING UNDER FRANCHISE OR CONTRACT WITH THE CITY OF NAPERVILLE.

EXHIBIT B



REVISION RECORD

NO.	DATE	DESCRIPTION
1	12/07/2022	REVISED PER CITY REVIEW DATED 10-13-2022

C&E
Civil & Environmental Consultants, Inc.
1230 East Diehl Road, Suite 200 - Naperville, IL 60563
630-963-6026 - 877-963-6026
www.ceinc.com

MIKOLS CONSTRUCTION, INC.
RIVERWALK PLACE
415 W JACKSON AVENUE
NAPERVILLE, ILLINOIS 60540

SITE DIMENSION PLAN

DATE: 12/07/2022 | DRAWN BY: SRH
DWG SCALE: 1" = 10' | CHECKED BY: JGC
PROJECT NO: 320-6-14-SAW00
APPROVED BY: JGC

DRAWING NO: **C200**
SHEET 7 OF 12

A:\130-001\130-614-CADD\DWG\PLAN_ENGINEERING\130614-019-030-GEOMETRIC.dwg(C200) LS(12/27/2022 - 10:00) - LP: 12/27/2022 2:21 PM