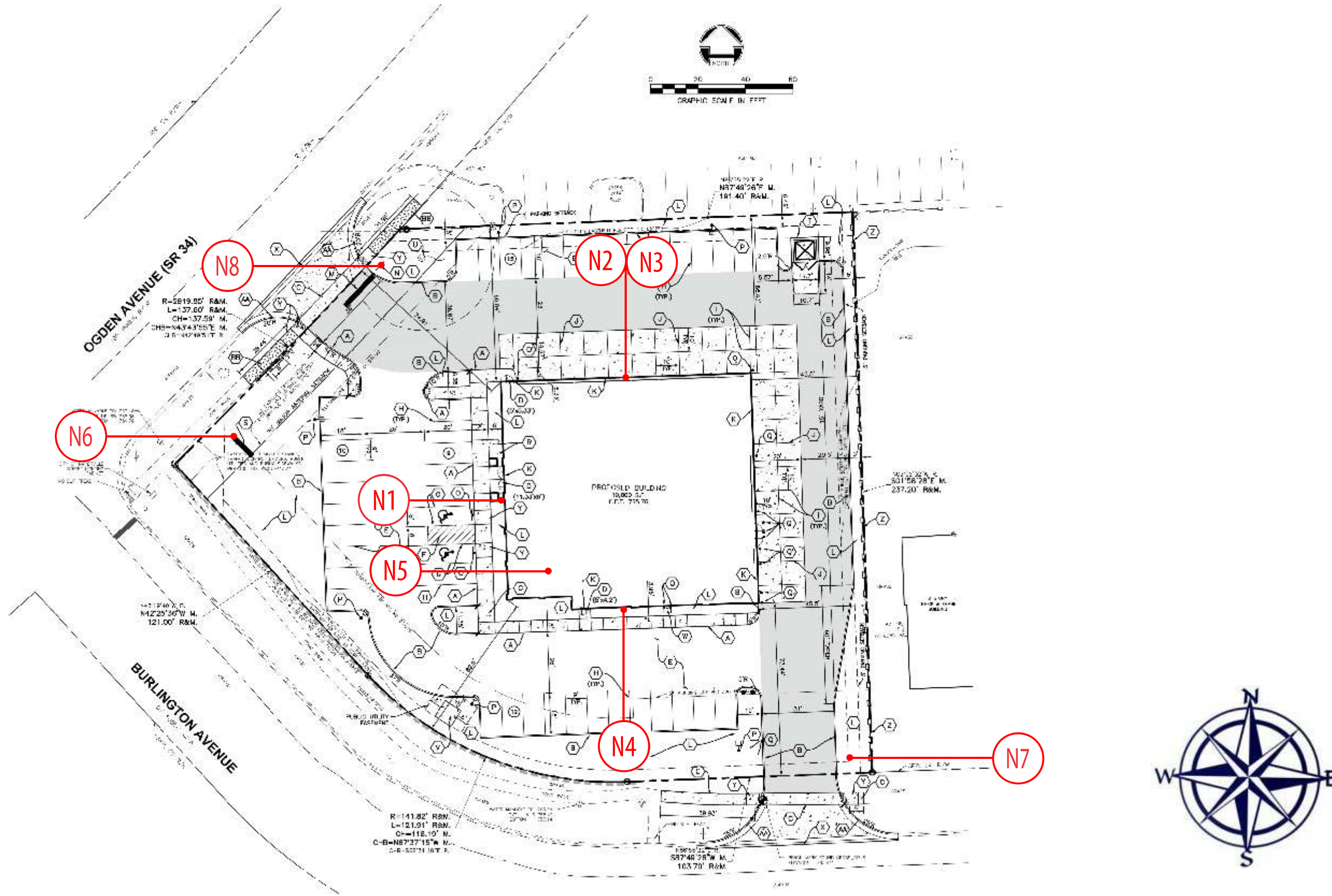


BELLE TIRE

1126 E. Ogden Ave.
Naperville, IL 60563
August 20, 2020



Client Review Status

Allen Industries, Inc. requires that an "Approved" drawing be obtained from the client prior to any production release or production release revision.

Approved Approved as Noted Revise & Resubmit

Name _____ Date _____

Title _____

Declaration

Copyright © 2020 Allen Industries, Inc. This is an original, unpublished drawing, created by Allen Industries, Inc. This drawing is submitted to you in confidence for your use solely in connection with the project being planned for you by Allen Industries, Inc. and is not to be shown to anyone outside your organization, nor used, reproduced, copied or exhibited in any fashion whatsoever. The designs shown on the drawing (except for any registered trademarks that may belong to a client of Allen Industries, Inc.) remain the property of Allen Industries, Inc.

Date / Description

Date	Description	Initial
07/14/20	Issue Date	KW
07/16/20	Changed elevations around	KW
08/20/20	North Elevation options	NM
-	-	-
-	-	-
-	-	-

Project Information

Client	Belle Tire
	1126 E Ogdan Ave., Naperville, IL 60563
File	OP021224_Naperville_IL_102
Sales	DB Design KW PM KB

Allen Industries
 YOUR BRAND AT ITS BEST™
 1-800-967-2553
 www.allenindustries.com



Scale:
 3/8"=1'

GENERAL SPECIFICATIONS

- Logo with pan formed face flush mounted to building
- Lighted channel letters flush mounted to building
- Remote located power supplies
- 120V primary electrical feed with disconnect by others

COLOR SPECIFICATIONS

- White
- Black
- Red
- Blue



WEST ELEVATION

Client Review Status

Allen Industries, Inc. requires that an "Approved" drawing be obtained from the client prior to any production release or production release revision.
 Approved Approved as Noted Revise & Resubmit
 Name _____ Date _____
 Title _____

Declaration

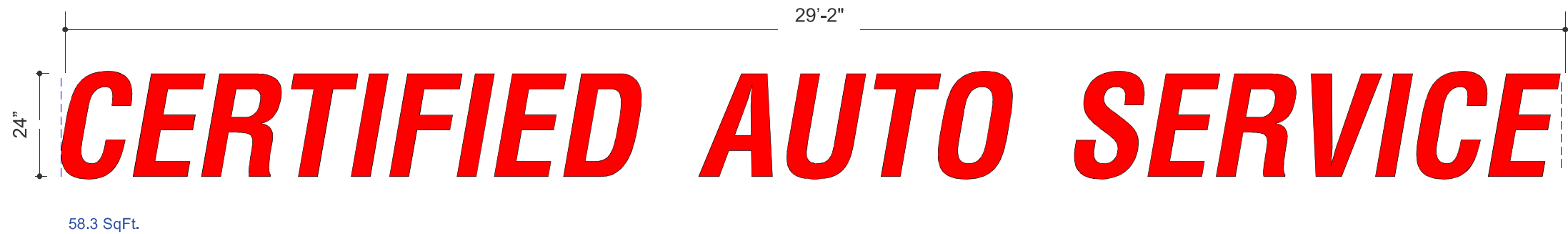
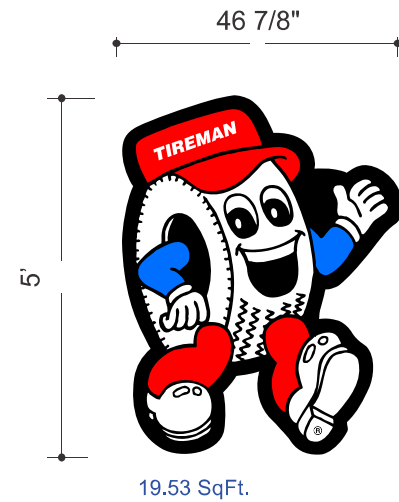
Copyright © 2020 Allen Industries, Inc.
 This is an original, unpublished drawing, created by Allen Industries, Inc. This drawing is submitted to you in confidence for your use solely in connection with the project being planned for you by Allen Industries, Inc. and is not to be shown to anyone outside your organization, nor used, reproduced, copied or exhibited in any fashion whatsoever. The designs shown on the drawing (except for any registered trademarks that may belong to a client of Allen Industries, Inc.) remain the property of Allen Industries, Inc.

Date / Description

Date	Description	KW	Initial
07/14/20	Issue Date	KW	
07/16/20	Changed elevations around	KW	- 5 -
08/20/20	North Elevation options	NM	- 6 -
- 3 -			- 7 -
- 4 -			- 8 -

Project Information

Client **Belle Tire**
 1126 E Ogden Ave., Naperville, IL 60563
 File **OP021224_Naperville,IL_102**
 Sales **DB** Design **KW** PM **KB**



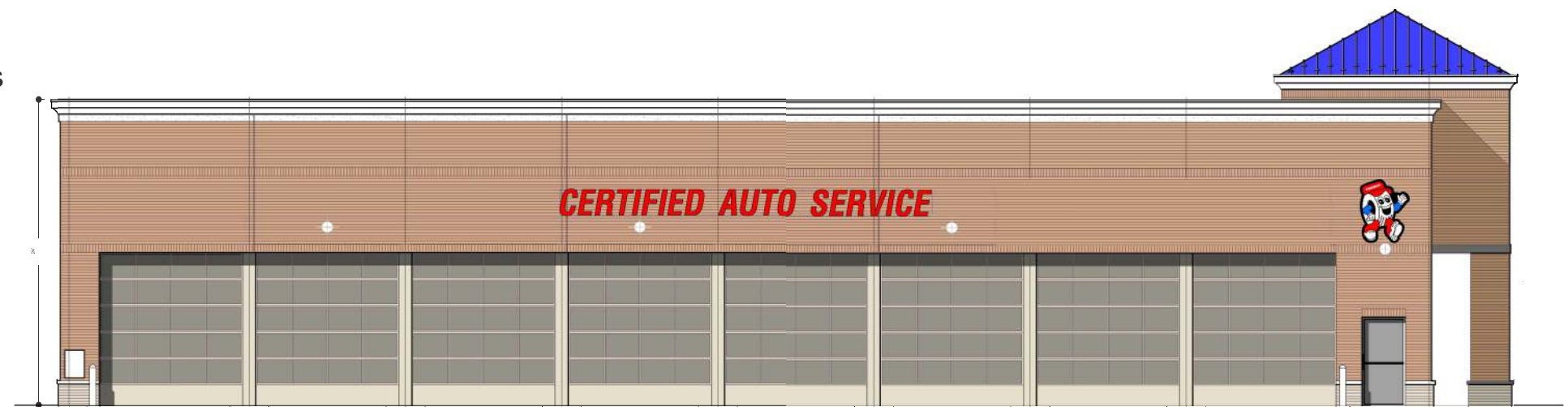
Scale: 3/8"=1'

GENERAL SPECIFICATIONS

- Logo with pan formed face flush mounted to building
- Lighted channel letters flush mounted to building
- Remote located power supplies
- 120V primary electrical feed with disconnect by others

COLOR SPECIFICATIONS

- White
- Black
- Red
- Blue



NORTH ELEVATION

Client Review Status

Allen Industries, Inc. requires that an "Approved" drawing be obtained from the client prior to any production release or production release revision.
 Approved Approved as Noted Revise & Resubmit
 Name _____
 Title _____ Date _____

Declaration

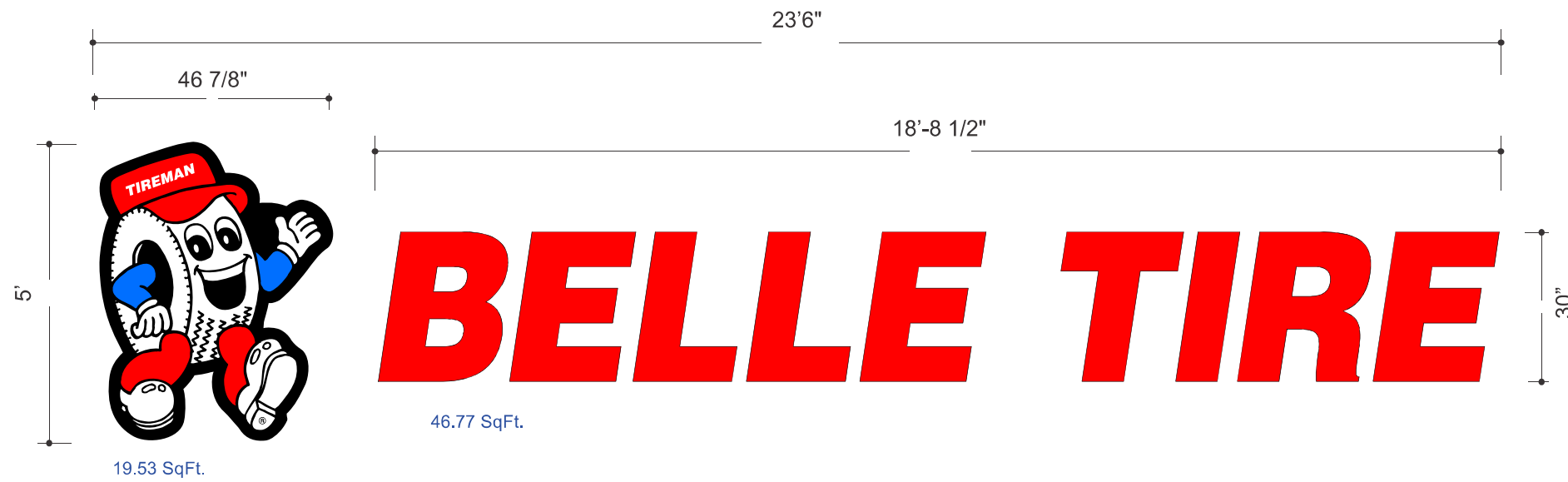
Copyright © 2020 Allen Industries, Inc.
 This is an original, unpublished drawing, created by Allen Industries, Inc. This drawing is submitted to you in confidence for your use solely in connection with the project being planned for you by Allen Industries, Inc. and is not to be shown to anyone outside your organization, nor used, reproduced, copied or exhibited in any fashion whatsoever. The designs shown on the drawing (except for any registered trademarks that may belong to a client of Allen Industries, Inc.) remain the property of Allen Industries, Inc.

Date / Description

Date	Description	Initial
07/14/20	Issue Date	KW
07/16/20	Changed elevations around	KW
08/20/20	North Elevation options	NM
-	-	-
-	-	-
-	-	-

Project Information

Client	Belle Tire		
	1126 E Ogden Ave., Naperville, IL 60563		
File	OP021224_Naperville,IL_102		
Sales	DB	Design	KW
		PM	KB



Scale: 3/8"=1'

GENERAL SPECIFICATIONS

- Logo with pan formed face flush mounted to building
- Lighted channel letters flush mounted to building
- Remote located power supplies
- 120V primary electrical feed with disconnect by others

COLOR SPECIFICATIONS

- White
- Black
- Red
- Blue



SOUTH ELEVATION

Client Review Status

Allen Industries, Inc. requires that an " Approved" drawing be obtained from the client prior to any production release or production release revision.
 Approved Approved as Noted Revise & Resubmit
 Name _____
 Title _____ Date _____

Declaration

Copyright © 2020 Allen Industries, Inc.
 This is an original, unpublished drawing, created by Allen Industries, Inc. This drawing is submitted to you in confidence for your use solely in connection with the project being planned for you by Allen Industries, Inc. and is not to be shown to anyone outside your organization, nor used, reproduced, copied or exhibited in any fashion whatsoever. The designs shown on the drawing (except for any registered trademarks that may belong to a client of Allen Industries, Inc.) remain the property of Allen Industries, Inc.

Date / Description

Date	Description	Initial	Initial
07/14/20	Issue Date	KW	
07/16/20	Changed elevations around	KW	-
08/20/20	North Elevation options	NM	-
-	-	-	-
-	-	-	-

Project Information

Client	Belle Tire
	1126 E Ogden Ave., Naperville, IL 60563
File	OP021224_Naperville,IL_102
Sales	DB Design KW PM KB

No Signs
East Elevation



EAST ELEVATION

Client Review Status

Allen Industries, Inc. requires that an "Approved" drawing be obtained from the client prior to any production release or production release revision.

Approved Approved as Noted Revise & Resubmit

Name _____
Title _____ Date _____

Declaration

Copyright © 2020 Allen Industries, Inc.

This is an original, unpublished drawing, created by Allen Industries, Inc. This drawing is submitted to you in confidence for your use solely in connection with the project being planned for you by Allen Industries, Inc. and is not to be shown to anyone outside your organization, nor used, reproduced, copied or exhibited in any fashion whatsoever. The designs shown on the drawing (except for any registered trademarks that may belong to a client of Allen Industries, Inc.) remain the property of Allen Industries, Inc.

Date / Description

Date	Description	Initial	Initial
07/14/20	Issue Date	KW	-
07/16/20	Changed elevations around	KW	-
08/20/20	North Elevation options	NM	-
-	-	-	-
-	-	-	-

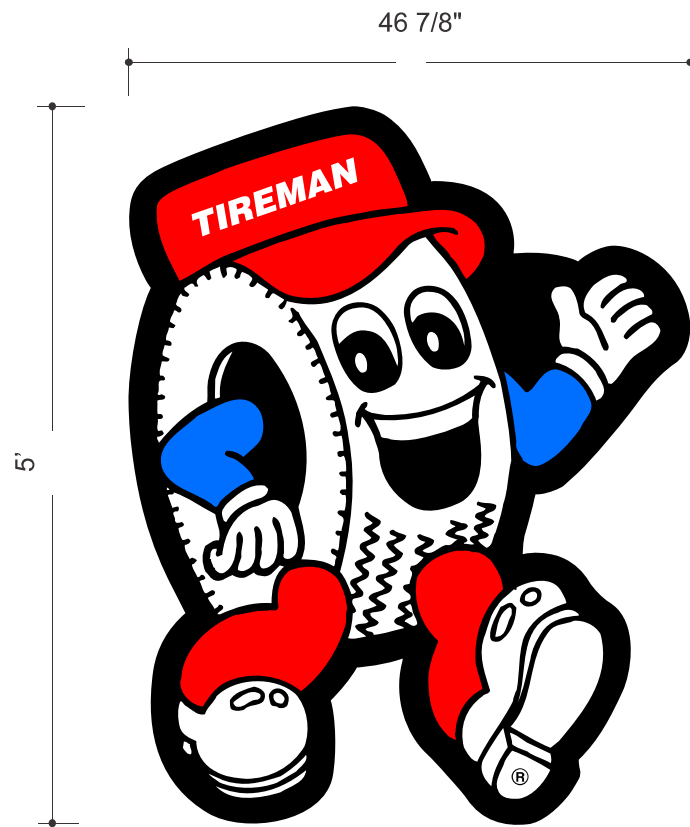
Project Information

Client **Belle Tire**
1126 E Ogden Ave., Naperville, IL 60563

File **OP021224_Naperville,IL_102**
Sales **DB** Design **KW** PM **KB**

Allen Industries
YOUR BRAND AT ITS BEST™
1-800-967-2553
www.allenindustries.com

Interior Lobby Lighted Logo **N5**
 Flush mounted to wall
 19.53 sq.ft



19.53 SqFt.

Scale:
 3/4"=1'

GENERAL SPECIFICATIONS

Logo with pan formed face flush mounted to wall
 Remote located power supplies
 120V primary electrical feed with disconnect by others

COLOR SPECIFICATIONS

- White
- Black
- Red
- Blue

Client Review Status

Allen Industries, Inc. requires that an "Approved" drawing be obtained from the client prior to any production release or production release revision.
 Approved Approved as Noted Revise & Resubmit
 Name _____
 Title _____ Date _____

Declaration

Copyright © 2020 Allen Industries, Inc.
 This is an original, unpublished drawing, created by Allen Industries, Inc. This drawing is submitted to you in confidence for your use solely in connection with the project being planned for you by Allen Industries, Inc. and is not to be shown to anyone outside your organization, nor used, reproduced, copied or exhibited in any fashion whatsoever. The designs shown on the drawing (except for any registered trademarks that may belong to a client of Allen Industries, Inc.) remain the property of Allen Industries, Inc.

Date / Description

Date	Description	Initial	Initial
07/14/20	Issue Date	KW	-
07/16/20	Changed elevations around	KW	-
08/20/20	North Elevation options	NM	-
-	-	-	-
-	-	-	-

Project Information

Client	Belle Tire		
	1126 E Ogden Ave., Naperville, IL 60563		
File	OP021224_Naperville,IL_102		
Sales	DB	Design	KW PM KB





NOTE: ONLY LETTERS AND LOGO ARE TO BE ILLUMINATED. REMAINING AREAS ARE TO BE OPAQUE.

Scale:
3/8"=1'

GENERAL SPECIFICATIONS

- LED lighted monument sign
- Channel letters flush mounted to face
- “Certified Auto Service” routed push through
- Paint pole and cabinet

COLOR SPECIFICATIONS

- White
- Black
- Red
- Blue

Client Review Status

Allen Industries, Inc. requires that an "Approved" drawing be obtained from the client prior to any production release or production release revision.
 Approved Approved as Noted Revise & Resubmit
 Name _____
 Title _____ Date _____

Declaration

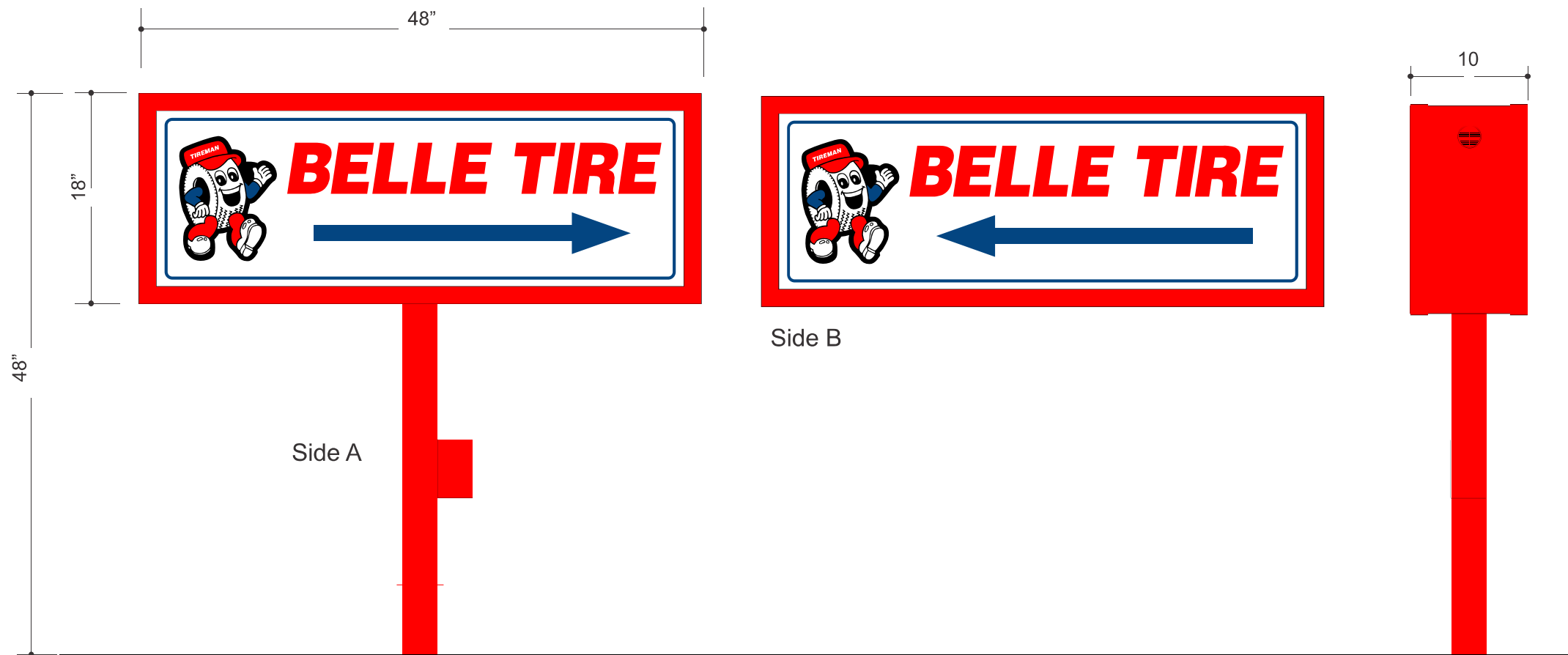
Copyright © 2020 Allen Industries, Inc.
 This is an original, unpublished drawing, created by Allen Industries, Inc. This drawing is submitted to you in confidence for your use solely in connection with the project being planned for you by Allen Industries, Inc. and is not to be shown to anyone outside your organization, nor used, reproduced, copied or exhibited in any fashion whatsoever. The designs shown on the drawing (except for any registered trademarks that may belong to a client of Allen Industries, Inc.) remain the property of Allen Industries, Inc.

Date / Description

Date	Description	Initial		
07/14/20	Issue Date	KW	-	-
07/16/20	Changed elevations around	KW	-	5
08/20/20	North Elevation options	NM	-	6
-	3	-	-	7
-	4	-	-	8

Project Information

Client	Belle Tire		
	1126 E Ogden Ave., Naperville, IL 60563		
File	OP021224_Naperville,IL_102		
Sales	DB	Design	KW
		PM	KB



D/F Lighted Directionals **N7 N8**
 At entrance off Ogden & Burlington Ave
2 signs

Scale:
 1"=1'

GENERAL SPECIFICATIONS

- Fabricated cabinet with 1 1/2" retainers
- 3"x3"x1/8" aluminum tube post
- Internal LED lighting
- Polycarbonate face/vinyl graphics
- 120V primary electrical feed with disconnect by others

COLOR SPECIFICATIONS

- White
- 3M 7725-12 Black
- 3M 3630-73 Dark Red
- 3M 3630-97 Bristol Blue

Client Review Status

Allen Industries, Inc. requires that an "Approved" drawing be obtained from the client prior to any production release or production release revision.
 Approved Approved as Noted Revise & Resubmit
 Name _____
 Title _____ Date _____

Declaration

Copyright © 2020 Allen Industries, Inc.
 This is an original, unpublished drawing, created by Allen Industries, Inc. This drawing is submitted to you in confidence for your use solely in connection with the project being planned for you by Allen Industries, Inc. and is not to be shown to anyone outside your organization, nor used, reproduced, copied or exhibited in any fashion whatsoever. The designs shown on the drawing (except for any registered trademarks that may belong to a client of Allen Industries, Inc.) remain the property of Allen Industries, Inc.

Date / Description

Date	Description	Initial	Initial
07/14/20	Issue Date	KW	
07/16/20	Changed elevations around	KW	-
08/20/20	North Elevation options	NM	-
-	-	-	-
-	-	-	-

Project Information

Client	Belle Tire		
	1126 E Ogden Ave., Naperville, IL 60563		
File	OP021224_Naperville,IL_102		
Sales	DB	Design	KW PM KB