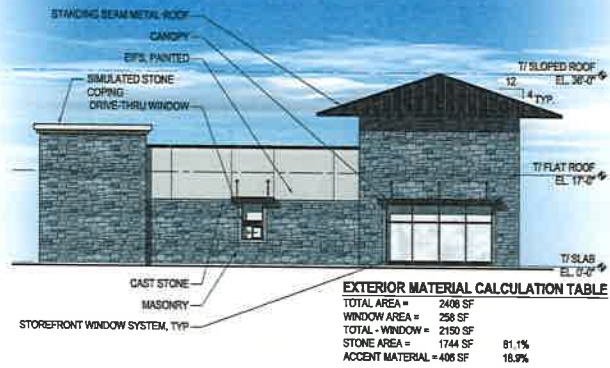


TOTAL BUILDING EXTERIOR MATERIAL CALCULATION TABLE	
TOTAL AREA =	13296 SF
WINDOW AREA =	2050 SF
TOTAL - WINDOW =	11586 SF
STONE AREA =	8864 SF
ACCENT MATERIAL =	2722 SF
	78.5%
	23.5%

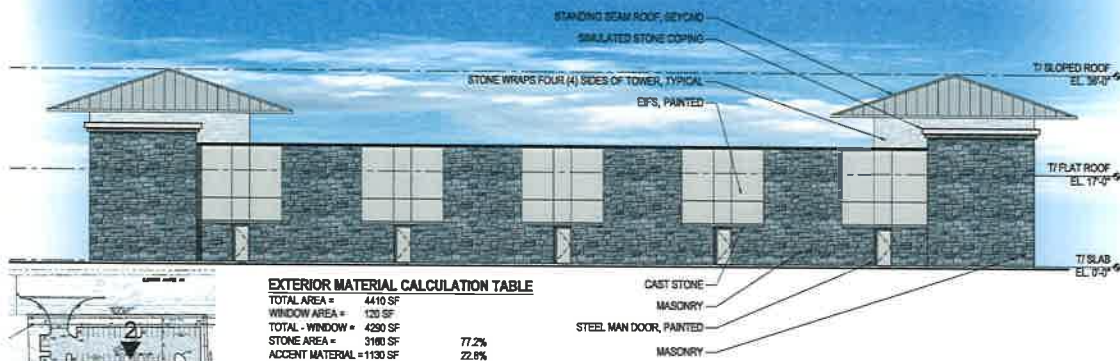
NOTE: REFER TO EXHIBIT #1 FOR MONUMENTAL SIGN ELEVATION. PER NAPERVILLE MUNI. CODE 6-18-5 (2.2) ONE (1) MONUMENTAL SIGN IS ALLOWED WITH 90 SF OF SIGN AREA. REFER TO CIVIL SITE PLAN FOR SIGN LOCATION



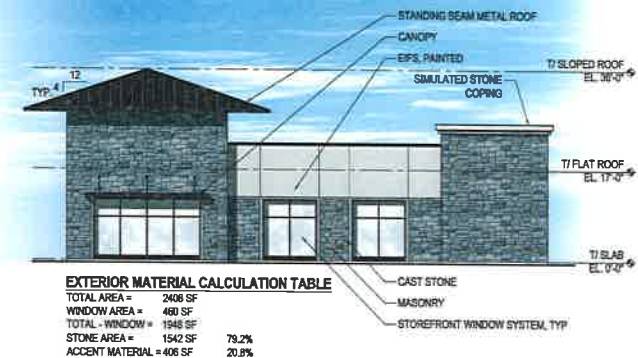
4 NORTH EXTERIOR ELEVATION
SCALE: 3/32" = 1'-0"



2 WEST EXTERIOR ELEVATION
SCALE: 3/32" = 1'-0"



3 EAST EXTERIOR ELEVATION
SCALE: 3/32" = 1'-0"



1 SOUTH EXTERIOR ELEVATION
SCALE: 3/32" = 1'-0"

BBCG SHOWROOM & COMMERCIAL STRUCTURE

9S080 Route 59
Naperville, IL 60564
October 2017

