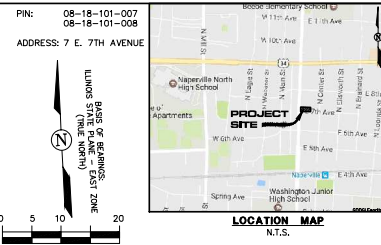
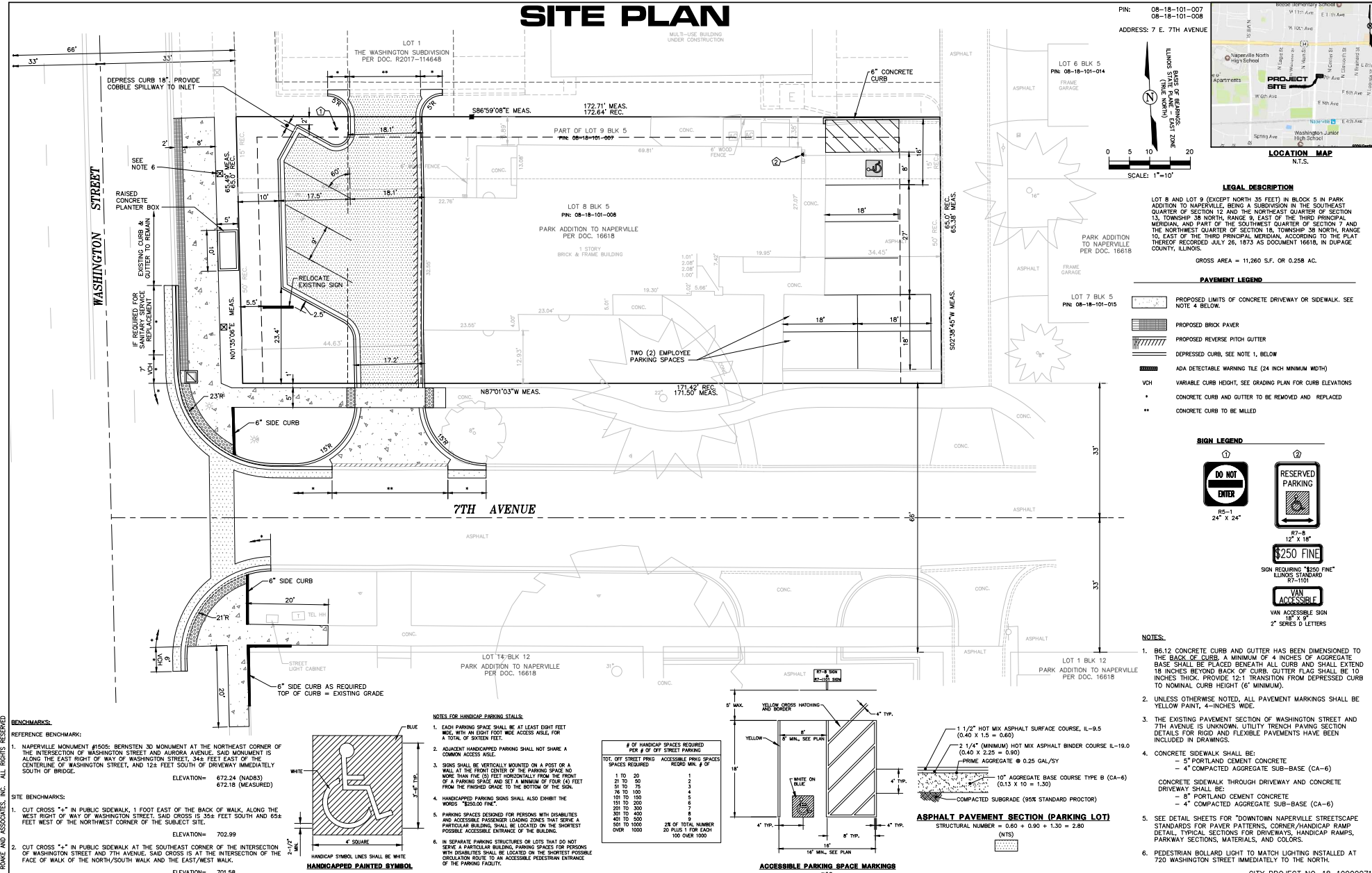


SITE PLAN



LEGAL DESCRIPTION
 LOT 8 AND LOT 9 (EXCEPT NORTH 35 FEET) IN BLOCK 5 IN PARK ADDITION TO NAPERVILLE, BEING A SUBDIVISION IN THE SOUTHEAST QUARTER OF SECTION 12 AND THE NORTHEAST QUARTER OF SECTION 13, TOWNSHIP 38 NORTH, RANGE 9, EAST OF THE THIRD PRINCIPAL MERIDIAN, AND PART OF THE SOUTHWEST QUARTER OF SECTION 7 AND THE NORTHEAST QUARTER OF SECTION 16, TOWNSHIP 38 NORTH, RANGE 10, EAST OF THE THIRD PRINCIPAL MERIDIAN, ACCORDING TO THE PLAT THEREOF RECORDED JULY 26, 1873 AS DOCUMENT 16618, IN DUPAGE COUNTY, ILLINOIS.
 GROSS AREA = 11,260 S.F. OR 0.258 AC.

- PAVEMENT LEGEND**
- PROPOSED LIMITS OF CONCRETE DRIVEWAY OR SIDEWALK. SEE NOTE 4 BELOW.
 - PROPOSED BRICK PAVEMENT
 - PROPOSED REVERSE PITCH GUTTER
 - DEPRESSED CURB, SEE NOTE 1, BELOW
 - ADA DETECTABLE WARNING TILE (24 INCH MINIMUM WIDTH)
 - VCH VARIABLE CURB HEIGHT, SEE GRADING PLAN FOR CURB ELEVATIONS
 - * CONCRETE CURB AND GUTTER TO BE REMOVED AND REPLACED
 - ** CONCRETE CURB TO BE MILLED

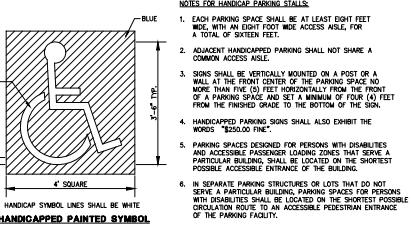
- SIGN LEGEND**
- DO NOT ENTER (R5-1 24" X 24")
 - RESERVED PARKING (R7-8 12" X 18")
 - \$250 FINE (ILLINOIS STANDARD 8-11)
 - VAN ACCESSIBLE (VAN ACCESSIBLE SIGN 18" X 9" 2" SERIES D LETTERS)

- NOTES:**
- BE 12" CONCRETE CURB AND GUTTER HAS BEEN DIMENSIONED TO THE BACK OF CURB. A MINIMUM OF 4 INCHES OF AGGREGATE BASE SHALL BE PLACED BENEATH ALL CURB AND SHALL EXTEND 18 INCHES BEYOND BACK OF CURB. GUTTER FLAG SHALL BE 10 INCHES THICK. PROVIDE 12:1 TRANSITION FROM DEPRESSED CURB TO NOMINAL CURB HEIGHT (6" MINIMUM).
 - UNLESS OTHERWISE NOTED, ALL PAVEMENT MARKINGS SHALL BE YELLOW PAINT, 4-INCHES WIDE.
 - THE EXISTING PAVEMENT SECTION OF WASHINGTON STREET AND 7TH AVENUE IS UNKNOWN. UTILITY TRENCH PAVING SECTION DETAILS FOR RIGID AND FLEXIBLE PAVEMENTS HAVE BEEN INCLUDED IN DRAWINGS.
 - CONCRETE SIDEWALK SHALL BE:
 - 5" PORTLAND CEMENT CONCRETE
 - 4" COMPACTED AGGREGATE SUB-BASE (CA-6)
 CONCRETE SIDEWALK THROUGH DRIVEWAY AND CONCRETE DRIVEWAY SHALL BE:
 - 8" PORTLAND CEMENT CONCRETE
 - 4" COMPACTED AGGREGATE SUB-BASE (CA-6)
 - SEE DETAIL SHEETS FOR "DOWNTOWN NAPERVILLE" STREETScape STANDARDS FOR PAVEMENT PATTERNS, CORNER/HANDICAP RAMP DETAIL, TYPICAL SECTIONS FOR DRIVEWAYS, HANDICAP RAMPS, PARKWAY SECTIONS, MATERIALS, AND COLORS.
 - PEDESTRIAN BOLLARD LIGHT TO MATCH LIGHTING INSTALLED AT 720 WASHINGTON STREET IMMEDIATELY TO THE NORTH.

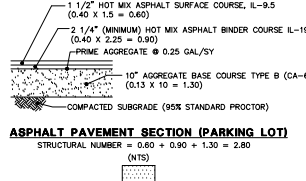
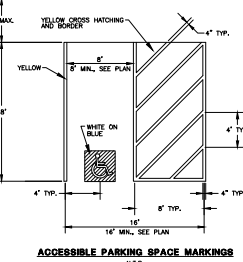
BENCHMARKS.
 REFERENCE BENCHMARK:
 1. NAPERVILLE MONUMENT #1505: BERNSTEIN 3D MONUMENT AT THE NORTHEAST CORNER OF THE INTERSECTION OF WASHINGTON STREET AND AURORA AVENUE. SAID MONUMENT IS ALONG THE EAST RIGHT-OF-WAY OF WASHINGTON STREET, 344.7 FEET EAST OF THE CENTERLINE OF WASHINGTON STREET, AND 124 FEET SOUTH OF DRIVEWAY IMMEDIATELY SOUTH OF BRIDGE.
 ELEVATION= 672.24 (NAD83)
 672.18 (MEASURED)

SITE BENCHMARKS:
 1. CUT CROSS "1" IN PUBLIC SIDEWALK, 1 FOOT EAST OF THE BACK OF WALK, ALONG THE WEST RIGHT-OF-WAY OF WASHINGTON STREET. SAID CROSS IS 358 FEET SOUTH AND 658 FEET WEST OF THE NORTHWEST CORNER OF THE SUBJECT SITE.
 ELEVATION= 702.99

2. CUT CROSS "4" IN PUBLIC SIDEWALK AT THE SOUTHEAST CORNER OF THE INTERSECTION OF WASHINGTON STREET AND 7TH AVENUE. SAID CROSS IS AT THE INTERSECTION OF THE FACE OF WALK OF THE NORTH/SOUTH WALK AND THE EAST/WEST WALK.
 ELEVATION= 701.58



# OF HANDICAP SPACES REQUIRED PER # OF OFF STREET PARKING SPACES REQUIRED	# OF OFF STREET PARKING SPACES REQUIRED	ACCESSIBLE PARKING SPACES REQUIRED
1 to 20	1	1
21 to 50	2	2
51 to 75	3	3
76 to 100	4	4
101 to 150	5	5
151 to 200	6	6
201 to 300	7	7
301 to 400	8	8
401 to 500	9	9
501 to 1000	10	10
OVER 1000	2% OF TOTAL NUMBER PLUS 1 FOR EACH 100 OVER 1000	



ROAKE AND ASSOCIATES, INC.
 CONSULTING ENGINEERS • LAND SURVEYORS • PLANNERS
 1884 QUINDY AVENUE, SUITE 100A • NAPERVILLE, ILLINOIS 60540
 TEL. (630) 366-3232 • FAX (630) 366-3287

PREPARED FOR:
TAILORING BY MONICA INC.
 7 EAST 7TH AVENUE
 NAPERVILLE, ILLINOIS 60563
 TEL. (630) 885-9070

NO.	DATE	DESCRIPTION	REVISED	NO.	DATE	DESCRIPTION
1	08/20/18	REV. PER CITY RVW DATED 08/01/18				

TAILORING BY MONICA

SITE PLAN

DRN./CDD. BY: SRH/JGC	FILE: 135131591E	FLD. BK./PG.: 266/50	SHEET NO. 1 OF 1
SCALE: 1"=10'	DATE: 07/06/2018	JOB NO.: 135.1315	