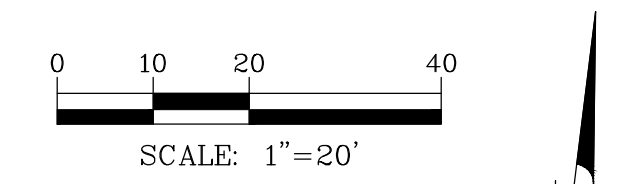


DEMOLITION LEGEND

	BITUMINOUS PAVEMENT AND BASE TO BE REMOVED
	CONCRETE PAVEMENT AND BASE TO BE REMOVED
	SAWCUT LINE
	FENCE, RETAINING WALL, RAILROAD TIES, POLES, CURB AND GUTTER, ETC. TO BE REMOVED
	UTILITY STRUCTURE TO BE REMOVED
	UTILITY LINE REMOVAL, FILL OR ABANDONMENT (REFER TO SPECIFICATIONS)
	TREE TO BE REMOVED
(TBR)	TO BE REMOVED
(TR)	TO REMAIN

EXISTING CONDITIONS AND DEMOLITION NOTES:

- EXISTING CONDITIONS AND DEMOLITION PLAN REPRESENT SITE CONDITIONS AS OF AUGUST 06, 2021. CONTRACTOR SHALL INSPECT SITE PRIOR TO BIDDING WORK TO VERIFY ACTUAL FIELD CONDITIONS AS PORTIONS OF THE DEMOLITION WORK MAY HAVE SINCE BEEN COMPLETED. CONTRACTOR SHALL BE RESPONSIBLE TO COMPLETE ALL DEMOLITION WORK AS PER PLANS TO PREPARE THE SITE FOR CONSTRUCTION OF PROPOSED IMPROVEMENTS.
- THE UNDERGROUND UTILITY INFORMATION AS SHOWN HEREON IS BASED, IN PART, UPON INFORMATION FURNISHED BY UTILITY COMPANIES AND THE LOCAL MUNICIPALITY. WHILE THIS INFORMATION IS BELIEVED TO BE RELIABLE, ITS ACCURACY AND COMPLETENESS CANNOT BE GUARANTEED NOR CERTIFIED TO.
- THE CONTRACTOR IS RESPONSIBLE FOR DEMOLITION, REMOVAL AND DISPOSAL (IN A LOCATION APPROVED BY ALL JURISDICTIONAL GOVERNING ENTITIES) OF ALL STRUCTURES, PADS, WALLS, FLUMES, FOUNDATIONS, ROAD, PARKING LOTS, DRIVES, DRAINAGE STRUCTURES, UTILITIES, ETC., SUCH THAT THE IMPROVEMENTS SHOWN ON THESE PLANS CAN BE CONSTRUCTED. ALL DEMOLITION WORK SHALL BE IN ACCORDANCE WITH ALL APPLICABLE FEDERAL, STATE AND LOCAL REQUIREMENTS. ALL FACILITIES TO BE REMOVED SHALL BE UNDERCUT TO SUITABLE MATERIAL AND BROUGHT TO GRADE WITH SUITABLE COMPACTED FILL MATERIAL PER THE SPECIFICATIONS.
- REFER TO SPECIFICATIONS SHEET FOR DEMOLITION NOTES.



DATE	REVISIONS

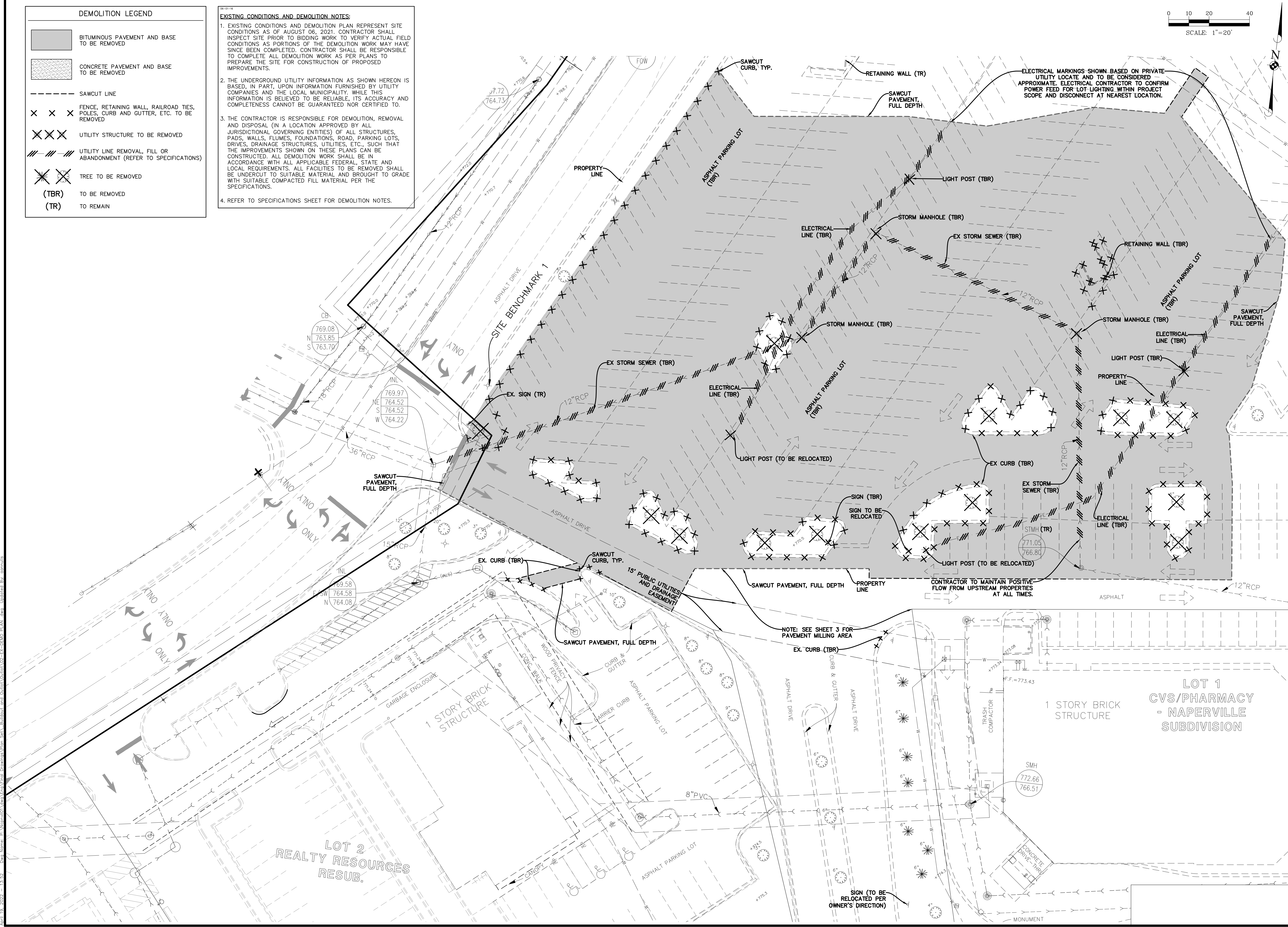
Manhard CONSULTING LTD
 1814 West Hillside, Naperville, IL 60563
 Phone: 630.334.3333
 Fax: 630.334.3334
 Email: info@manhardconsulting.com
 Services: Surveying • Utility Design • Civil Engineering • Construction Management • Environmental Science • Planning

EASTGATE CROSSING - COMMERCIAL OUTLOT
 CITY OF NAPERVILLE, ILLINOIS
 EXISTING CONDITIONS AND DEMOLITION PLAN

PROJ. MGR.:	KJC
PROJ. ASSOC.:	JRM
DRAWN BY:	AS
DATE:	04-21-22
SCALE:	1"=20'

SHEET
2 OF 14
 NCPNV101

ISSUE FOR PERMIT - NOT FOR CONSTRUCTION



April 19, 2022 - 13:52 Desi Neme, P. Nemo001 User\Enr\Final\Drawings\Plan Set\Buildout and Outlot\Outlot\02-EX-DEMO PLAN.dwg Updated Bk. annulus

© 2022 MANHARD CONSULTING, LTD. ALL RIGHTS RESERVED

PAVEMENT LEGEND

	STANDARD DUTY PAVEMENT 2" BITUMINOUS SURFACE COURSE, HOT-MIX ASPHALT, MIX D, N50 2" BITUMINOUS BINDER COURSE, HOT-MIX ASPHALT, IL-19, N50 8" AGGREGATE BASE COURSE, TYPE B
	HEAVY DUTY PAVEMENT 2" BITUMINOUS SURFACE COURSE, HOT-MIX ASPHALT, MIX D, N50 6" BITUMINOUS BINDER COURSE, HOT-MIX ASPHALT, IL-19, N50 12" AGGREGATE BASE COURSE, TYPE B
	CONCRETE PAVEMENT 6" PORTLAND CEMENT CONCRETE PAVEMENT W/ 6 X 6 W1.4 WW 6" COMPACTED AGGREGATE BASE, TYPE B
	CONCRETE SIDEWALK 4" PORTLAND CEMENT CONCRETE 2" COMPACTED AGGREGATE SUBBASE, CA-6
	MILL AND RESURFACE PAVEMENT 2" BITUMINOUS SURFACE COURSE, HOT-MIX ASPHALT, MIX D, N50

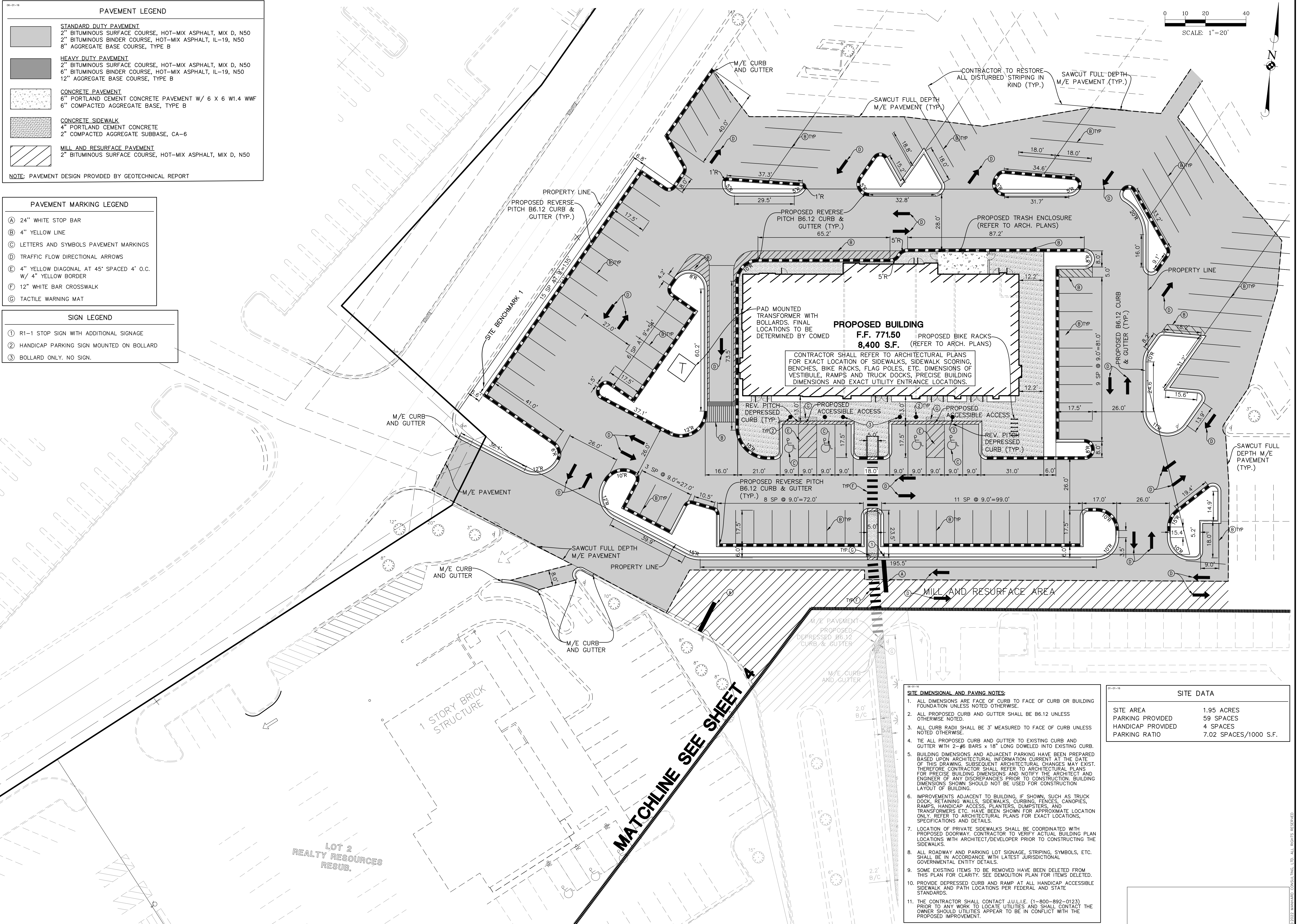
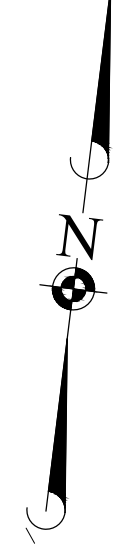
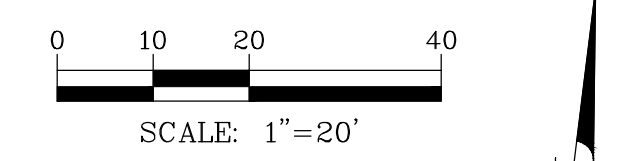
NOTE: PAVEMENT DESIGN PROVIDED BY GEOTECHNICAL REPORT

PAVEMENT MARKING LEGEND

	A 24" WHITE STOP BAR
	B 4" YELLOW LINE
	C LETTERS AND SYMBOLS PAVEMENT MARKINGS
	D TRAFFIC FLOW DIRECTIONAL ARROWS
	E 4" YELLOW DIAGONAL AT 45° SPACED 4" O.C. W/ 4" YELLOW BORDER
	F 12" WHITE BAR CROSSWALK
	G TACTILE WARNING MAT

SIGN LEGEND

	1 R1-1 STOP SIGN WITH ADDITIONAL SIGNAGE
	2 HANDICAP PARKING SIGN MOUNTED ON BOLLARD
	3 BOLLARD ONLY, NO SIGN.



MATCHLINE SEE SHEET 4

- SITE DIMENSIONAL AND PAVING NOTES:**
- ALL DIMENSIONS ARE FACE OF CURB TO FACE OF CURB OR BUILDING FOUNDATION UNLESS NOTED OTHERWISE.
 - ALL PROPOSED CURB AND GUTTER SHALL BE B6.12 UNLESS OTHERWISE NOTED.
 - ALL CURB RADI SHALL BE 3' MEASURED TO FACE OF CURB UNLESS NOTED OTHERWISE.
 - TIE ALL PROPOSED CURB AND GUTTER TO EXISTING CURB AND GUTTER WITH 2-#6 BARS x 18" LONG DOWELED INTO EXISTING CURB.
 - BUILDING DIMENSIONS AND ADJACENT PARKING HAVE BEEN PREPARED BASED UPON ARCHITECTURAL INFORMATION CURRENT AT THE DATE OF THIS DRAWING. SUBSEQUENT ARCHITECTURAL CHANGES MAY EXIST. THEREFORE CONTRACTOR SHALL REFER TO ARCHITECTURAL PLANS FOR PRECISE BUILDING DIMENSIONS AND NOTIFY THE ARCHITECT AND ENGINEER OF ANY DISCREPANCIES PRIOR TO CONSTRUCTION. BUILDING DIMENSIONS SHOWN SHOULD NOT BE USED FOR CONSTRUCTION LAYOUT OF BUILDING.
 - IMPROVEMENTS ADJACENT TO BUILDING, IF SHOWN, SUCH AS TRUCK DOCK, RETAINING WALLS, SIDEWALKS, CURBING, FENCES, CANOPIES, RAMPS, HANDICAP ACCESS, PLANTERS, DUMPSTERS, AND TRANSFORMERS ETC. HAVE BEEN SHOWN FOR APPROXIMATE LOCATION ONLY. REFER TO ARCHITECTURAL PLANS FOR EXACT LOCATIONS, SPECIFICATIONS AND DETAILS.
 - LOCATION OF PRIVATE SIDEWALKS SHALL BE COORDINATED WITH PROPOSED DOORWAY. CONTRACTOR TO VERIFY ACTUAL BUILDING PLAN LOCATIONS WITH ARCHITECT/DEVELOPER PRIOR TO CONSTRUCTING THE SIDEWALKS.
 - ALL ROADWAY AND PARKING LOT SIGNAGE, STRIPING, SYMBOLS, ETC. SHALL BE IN ACCORDANCE WITH LATEST JURISDICTIONAL GOVERNMENTAL ENTITY DETAILS.
 - SOME EXISTING ITEMS TO BE REMOVED HAVE BEEN DELETED FROM THIS PLAN FOR CLARITY. SEE DEMOLITION PLAN FOR ITEMS DELETED.
 - PROVIDE DEPRESSED CURB AND RAMP AT ALL HANDICAP ACCESSIBLE SIDEWALK AND PATH LOCATIONS PER FEDERAL AND STATE STANDARDS.
 - THE CONTRACTOR SHALL CONTACT J.U.L.L.E. (1-800-892-0123) PRIOR TO ANY WORK TO LOCATE UTILITIES AND SHALL CONTACT THE OWNER SHOULD UTILITIES APPEAR TO BE IN CONFLICT WITH THE PROPOSED IMPROVEMENT.

SITE DATA

SITE AREA	1.95 ACRES
PARKING PROVIDED	59 SPACES
HANDICAP PROVIDED	4 SPACES
PARKING RATIO	7.02 SPACES/1000 S.F.

REVISIONS

NO.	DATE	DESCRIPTION

Manhard CONSULTING LTD.
 14 West Hillside, Suite 100, Naperville, IL 60563
 (630) 335-1100
 Civil Engineers • Surveyors • Water Resources Engineers • Water & Wastewater Engineers • Construction Managers • Environmental Scientists • Landscape Architects • Planners

EASTGATE CROSSING - COMMERCIAL OUTLOT
 CITY OF NAPERVILLE, ILLINOIS
 SITE DIMENSIONAL AND PAVING PLAN

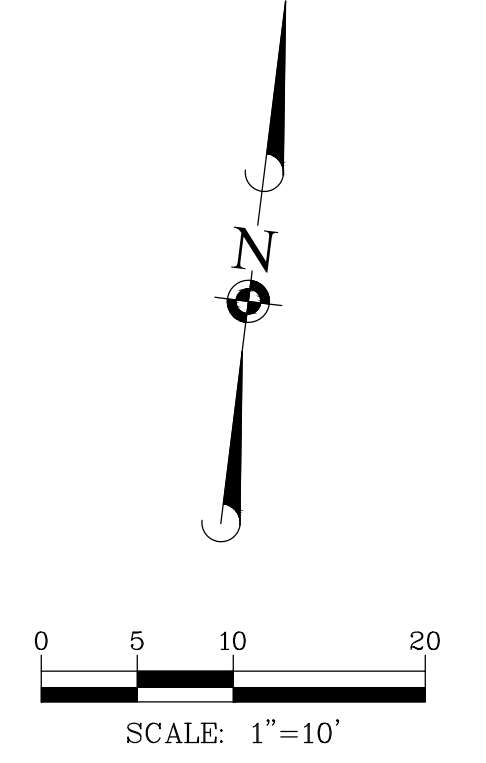
PROJ. MGR.: KJC
 PROJ. ASSOC.: JRM
 DRAWN BY: AS
 DATE: 04-21-22
 SCALE: 1"=20'

SHEET
3 OF **14**
 NCPNVL01

ISSUE FOR PERMIT - NOT FOR CONSTRUCTION

April 21, 2022 - 08:45 Des Name: P:\NCPNVL01\Man\Enr\Final\Drawings\Plan_Sat_V_Bulletout_and_Quilts\Outlot\03-04-SITE_PLAN.dwg Updated By: JRM

April 21, 2022 - 08:45 Des Name: P:\NCPN\01\New\Enr\Final\Drawings\Plan_Sat_V_Bulldoz\Outlot\03-04-SITE PLAN.dwg Updated By: JRM



PAVEMENT MARKING LEGEND	
(A)	24" WHITE STOP BAR
(B)	4" YELLOW LINE
(C)	LETTERS AND SYMBOLS PAVEMENT MARKINGS
(D)	TRAFFIC FLOW DIRECTIONAL ARROWS
(E)	4" YELLOW DIAGONAL AT 45° SPACED 4' O.C. W/ 4" YELLOW BORDER
(F)	12" WHITE BAR CROSSWALK
(G)	TACTILE WARNING MAT

SIGN LEGEND	
①	R1-1 STOP SIGN WITH ADDITIONAL SIGNAGE
②	HANDICAP PARKING SIGN MOUNTED ON BOLLARD
③	BOLLARD ONLY. NO SIGN.

PAVEMENT LEGEND	
	STANDARD DUTY PAVEMENT 2" BITUMINOUS SURFACE COURSE, HOT-MIX ASPHALT, MIX D, N50 2" BITUMINOUS BINDER COURSE, HOT-MIX ASPHALT, IL-19, N50 8" AGGREGATE BASE COURSE, TYPE B
	HEAVY DUTY PAVEMENT 2" BITUMINOUS SURFACE COURSE, HOT-MIX ASPHALT, MIX D, N50 6" BITUMINOUS BINDER COURSE, HOT-MIX ASPHALT, IL-19, N50 12" AGGREGATE BASE COURSE, TYPE B
	CONCRETE PAVEMENT 6" PORTLAND CEMENT CONCRETE PAVEMENT W/ 6 X 6 W1.4 WWF 6" COMPACTED AGGREGATE BASE, TYPE B
	CONCRETE SIDEWALK 4" PORTLAND CEMENT CONCRETE 2" COMPACTED AGGREGATE SUBBASE, CA-6
	MILL AND RESURFACE PAVEMENT 2" BITUMINOUS SURFACE COURSE, HOT-MIX ASPHALT, MIX D, N50

DATE	REVISIONS	DRAWN BY
		JRM

Manhard CONSULTING LTD.
 144 West Hillside, Suite 100, Naperville, IL 60563
 P: 630.334.1100
 F: 630.334.1101
 E: info@manhardconsulting.com
 Manhard Consulting Ltd. is an Equal Opportunity Employer
 Civil Engineers • Surveyors • Water Resource Engineers • Water & Wastewater Engineers
 Construction Managers • Environmental Scientists • Landscape Architects • Planners

EASTGATE CROSSING - COMMERCIAL OUTLOT
CITY OF NAPERVILLE, ILLINOIS
SITE DIMENSIONAL AND PAVING PLAN - SIDEWALK EXTENSION

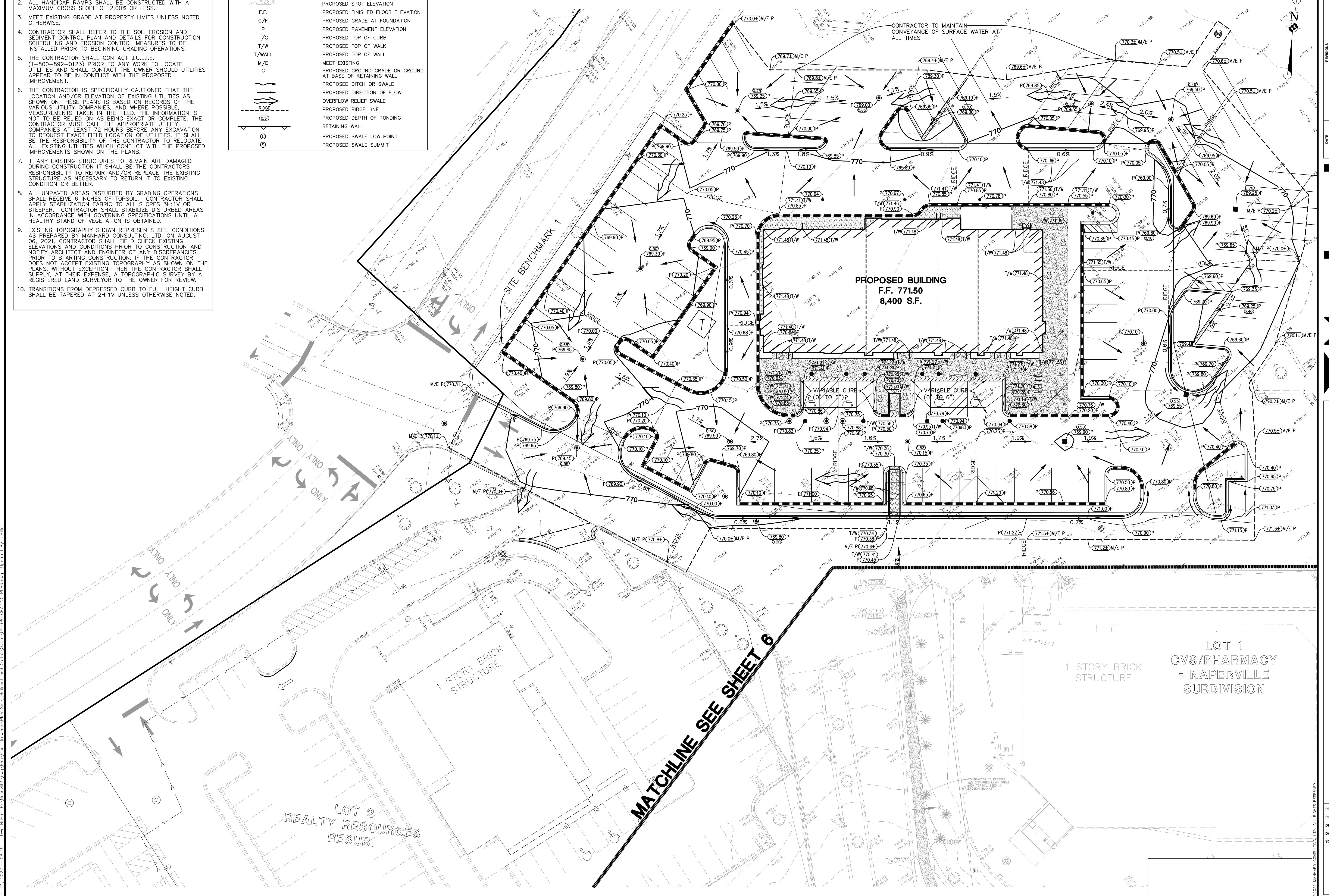
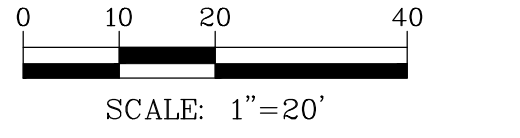
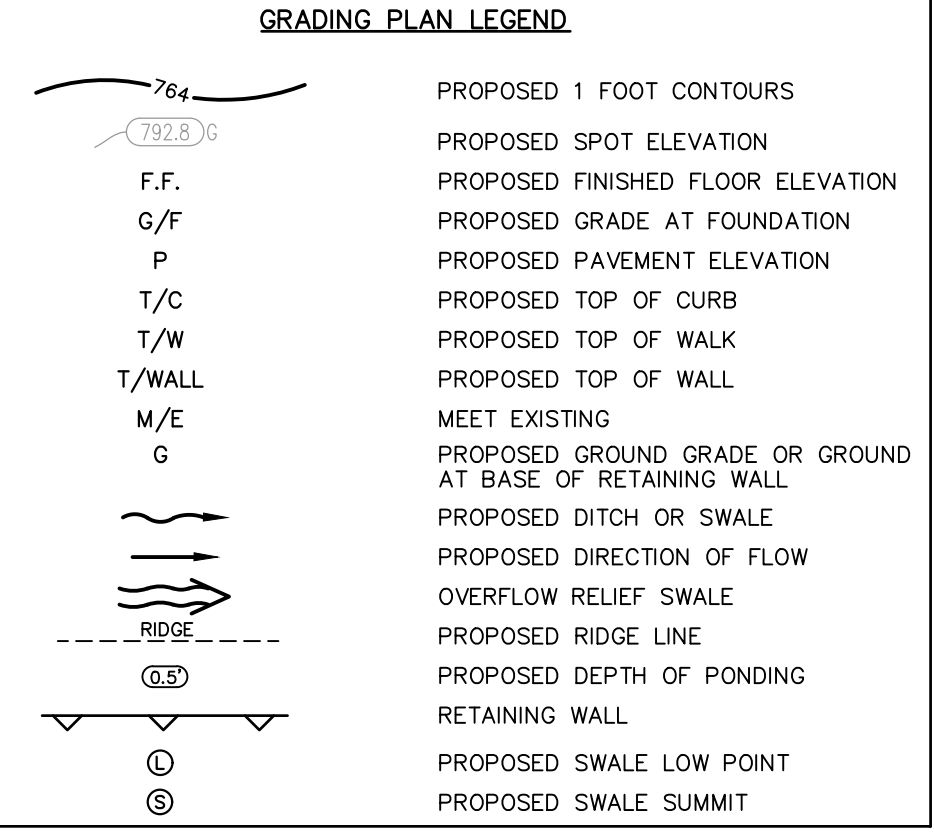
PROJ. MGR.: KJC
 PROJ. ASSOC.: JRM
 DRAWN BY: JRM
 DATE: 04-21-22
 SCALE: 1"=10'

SHEET
4 OF **14**
 NCPNV101

© 2022 MANHARD CONSULTING, LTD. ALL RIGHTS RESERVED.

ISSUE FOR PERMIT - NOT FOR CONSTRUCTION

- GRADING NOTES:**
- PAVEMENT SLOPES THROUGH HANDICAP ACCESSIBLE PARKING AREAS SHALL BE 2.00% MAXIMUM IN ANY DIRECTION.
 - ALL HANDICAP RAMPS SHALL BE CONSTRUCTED WITH A MAXIMUM CROSS SLOPE OF 2.00% OR LESS.
 - MEET EXISTING GRADE AT PROPERTY LIMITS UNLESS NOTED OTHERWISE.
 - CONTRACTOR SHALL REFER TO THE SOIL EROSION AND SEDIMENT CONTROL PLAN AND DETAILS FOR CONSTRUCTION SCHEDULING AND EROSION CONTROL MEASURES TO BE INSTALLED PRIOR TO BEGINNING GRADING OPERATIONS.
 - THE CONTRACTOR SHALL CONTACT J.U.L.I.E. (1-800-892-0123) PRIOR TO ANY WORK TO LOCATE UTILITIES AND SHALL CONTACT THE OWNER SHOULD UTILITIES APPEAR TO BE IN CONFLICT WITH THE PROPOSED IMPROVEMENTS.
 - THE CONTRACTOR IS SPECIFICALLY CAUTIONED THAT THE LOCATION AND/OR ELEVATION OF EXISTING UTILITIES AS SHOWN ON THESE PLANS IS BASED ON RECORDS OF THE VARIOUS UTILITY COMPANIES, AND WHERE POSSIBLE, MEASUREMENTS TAKEN IN THE FIELD. THE INFORMATION IS NOT TO BE RELIED ON AS BEING EXACT OR COMPLETE. THE CONTRACTOR MUST CALL THE APPROPRIATE UTILITY COMPANIES AT LEAST 72 HOURS BEFORE ANY EXCAVATION TO REQUEST EXACT FIELD LOCATION OF UTILITIES. IT SHALL BE THE RESPONSIBILITY OF THE CONTRACTOR TO RELOCATE ALL EXISTING UTILITIES WHICH CONFLICT WITH THE PROPOSED IMPROVEMENTS SHOWN ON THE PLANS.
 - IF ANY EXISTING STRUCTURES TO REMAIN ARE DAMAGED DURING CONSTRUCTION IT SHALL BE THE CONTRACTOR'S RESPONSIBILITY TO REPAIR AND/OR REPLACE THE EXISTING STRUCTURE AS NECESSARY TO RETURN IT TO EXISTING CONDITION OR BETTER.
 - ALL UNPAVED AREAS DISTURBED BY GRADING OPERATIONS SHALL RECEIVE 6 INCHES OF TOPSOIL. CONTRACTOR SHALL APPLY STABILIZATION FABRIC TO ALL SLOPES 3H:1V OR STEEPER. CONTRACTOR SHALL STABILIZE DISTURBED AREAS IN ACCORDANCE WITH GOVERNING SPECIFICATIONS UNTIL A HEALTHY STAND OF VEGETATION IS OBTAINED.
 - EXISTING TOPOGRAPHY SHOWN REPRESENTS SITE CONDITIONS AS PREPARED BY MANHARD CONSULTING, LTD. ON AUGUST 06, 2021. CONTRACTOR SHALL FIELD CHECK EXISTING ELEVATIONS AND CONDITIONS PRIOR TO CONSTRUCTION AND NOTIFY ARCHITECT AND ENGINEER OF ANY DISCREPANCIES PRIOR TO STARTING CONSTRUCTION. IF THE CONTRACTOR DOES NOT ACCEPT EXISTING TOPOGRAPHY AS SHOWN ON THE PLANS, WITHOUT EXCEPTION, THEN THE CONTRACTOR SHALL SUPPLY, AT THEIR EXPENSE, A TOPOGRAPHIC SURVEY BY A REGISTERED LAND SURVEYOR TO THE OWNER FOR REVIEW.
 - TRANSITIONS FROM DEPRESSED CURB TO FULL HEIGHT CURB SHALL BE TAPERED AT 2H:1V UNLESS OTHERWISE NOTED.



DATE: _____

REVISIONS:

NO.	DATE	DESCRIPTION

DATE: 02-08-22 REVISED PER CITY REVIEW

Manhard CONSULTING LTD.

1545 West Hillside, Naperville, IL 60563
 630-253-7000
 www.manhardconsulting.com

Principal Engineer: **William S. Venzon**
 Project Engineer: **JRM**

Civil Engineers • Surveyors • Water Resources Engineers • Water & Wastewater Engineers
 Construction Managers • Environmental Scientists • Landscape Architects • Planners

EASTGATE CROSSING - COMMERCIAL OUTLOT

CITY OF NAPERVILLE, ILLINOIS

GRADING PLAN

PROJ. MGR: KJC
 PROJ. ASSOC: JRM
 DRAWN BY: AS
 DATE: 04-21-22
 SCALE: 1"=20'

SHEET
5 OF **14**
 NCPNV101

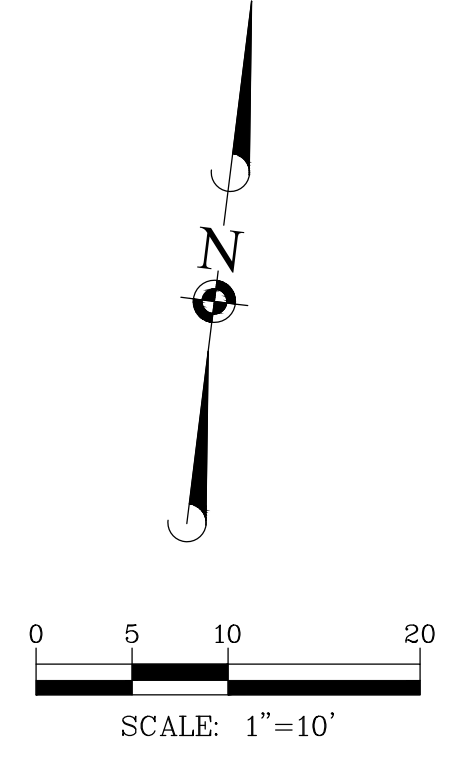
ISSUE FOR PERMIT - NOT FOR CONSTRUCTION

April 21, 2022 - 08:49 - Des Name: P:\nipro001\Man\Enr\Final Drawings\Plan Set\Buildout and Outlet\Outlet\02-06-Grading Plan.dwg - User: JRM



MATCHLINE SEE SHEET 5

CONTRACTOR TO RESTORE ALL DISTURBED LAWN AREAS WITH TOPSOIL, SEED, & EROSION BLANKET



DATE	REVISIONS	BY	DESCRIPTION
02-09-22	REVISED PER CITY REVIEW	JRM	

Manhard CONSULTING LTD
150 West Hillside, 5th Floor, Chicago, IL 60656
Civil Engineers • Surveyors • Water Resources Engineers • Wetland & Wetlands Engineers • Planners • Construction Managers • Environmental Scientists • Landscape Architects • Planners

EASTGATE CROSSING - COMMERCIAL OUTLOT
CITY OF NAPERVILLE, ILLINOIS
GRADING PLAN - SIDEWALK EXTENSION

PROJ. MGR.: KJC
PROJ. ASSOC.: JRM
DRAWN BY: JRM
DATE: 04-21-22
SCALE: 1"=10'
SHEET
6 OF **14**
NCPNVL01

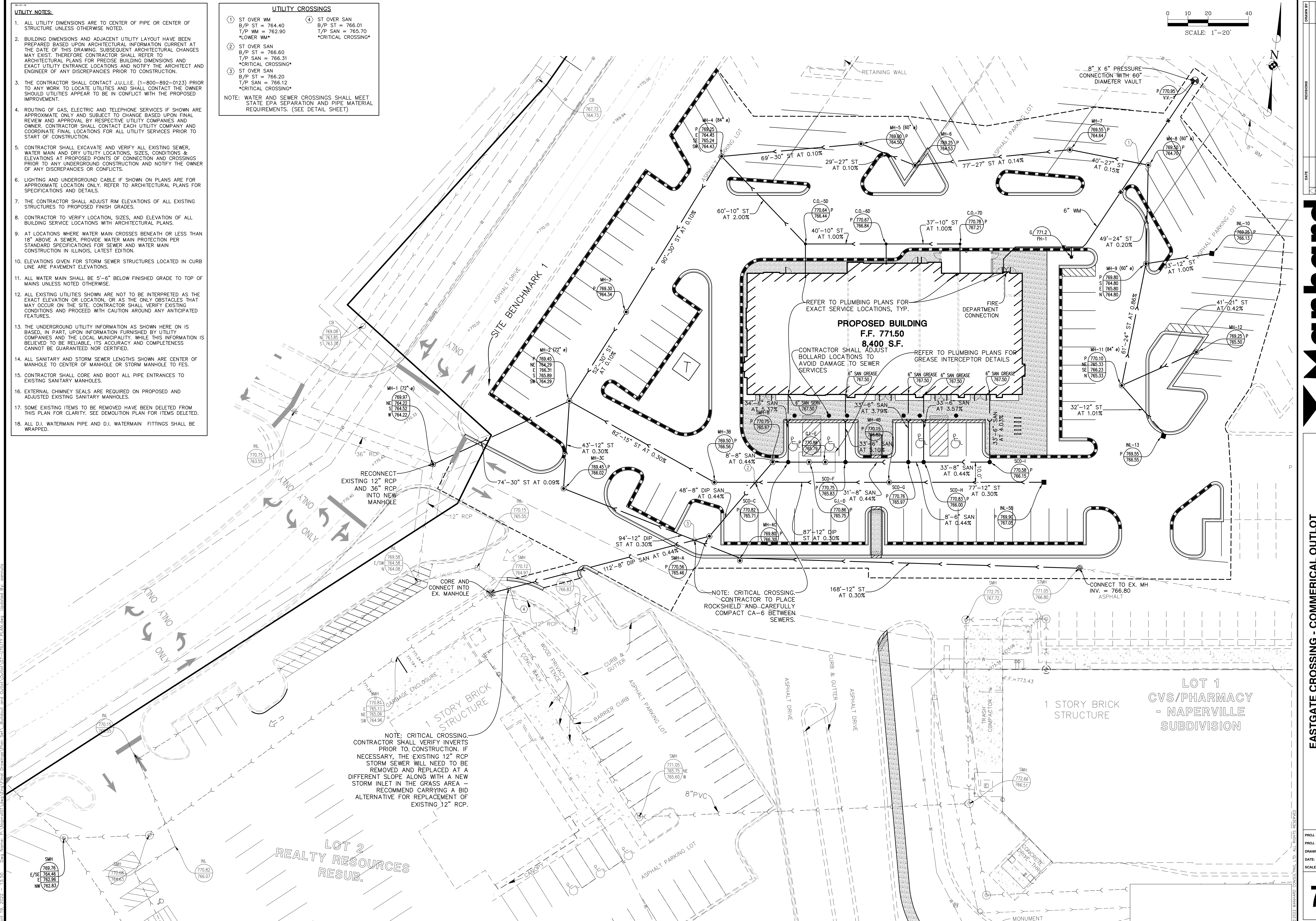
ISSUE FOR PERMIT - NOT FOR CONSTRUCTION

- UTILITY NOTES:**
- ALL UTILITY DIMENSIONS ARE TO CENTER OF PIPE OR CENTER OF STRUCTURE UNLESS OTHERWISE NOTED.
 - BUILDING DIMENSIONS AND ADJACENT UTILITY LAYOUT HAVE BEEN PREPARED BASED UPON ARCHITECTURAL INFORMATION CURRENT AT THE DATE OF THIS DRAWING. SUBSEQUENT ARCHITECTURAL CHANGES MAY EXIST. THEREFORE CONTRACTOR SHALL REFER TO ARCHITECTURAL PLANS FOR PRECISE BUILDING DIMENSIONS AND EXACT UTILITY ENTRANCE LOCATIONS AND NOTIFY THE ARCHITECT AND ENGINEER OF ANY DISCREPANCIES PRIOR TO CONSTRUCTION.
 - THE CONTRACTOR SHALL CONTACT J.U.L.I.E. (1-800-892-0123) PRIOR TO ANY WORK TO LOCATE UTILITIES AND SHALL CONTACT THE OWNER SHOULD UTILITIES APPEAR TO BE IN CONFLICT WITH THE PROPOSED IMPROVEMENT.
 - ROUTING OF GAS, ELECTRIC AND TELEPHONE SERVICES IF SHOWN ARE APPROXIMATE ONLY AND SUBJECT TO CHANGE BASED UPON FINAL REVIEW AND APPROVAL BY RESPECTIVE UTILITY COMPANIES AND OWNER. CONTRACTOR SHALL CONTACT EACH UTILITY COMPANY AND COORDINATE FINAL LOCATIONS FOR ALL UTILITY SERVICES PRIOR TO START OF CONSTRUCTION.
 - CONTRACTOR SHALL EXCAVATE AND VERIFY ALL EXISTING SEWER, WATER MAIN AND DRY UTILITY LOCATIONS, SIZES, CONDITIONS & ELEVATIONS AT PROPOSED POINTS OF CONNECTION AND CROSSINGS PRIOR TO ANY UNDERGROUND CONSTRUCTION AND NOTIFY THE OWNER OF ANY DISCREPANCIES OR CONFLICTS.
 - LIGHTING AND UNDERGROUND CABLE IF SHOWN ON PLANS ARE FOR APPROXIMATE LOCATION ONLY. REFER TO ARCHITECTURAL PLANS FOR SPECIFICATIONS AND DETAILS.
 - THE CONTRACTOR SHALL ADJUST RIM ELEVATIONS OF ALL EXISTING STRUCTURES TO PROPOSED FINISH GRADES.
 - CONTRACTOR TO VERIFY LOCATION, SIZES, AND ELEVATION OF ALL BUILDING SERVICE LOCATIONS WITH ARCHITECTURAL PLANS.
 - AT LOCATIONS WHERE WATER MAIN CROSSES BENEATH OR LESS THAN 18" ABOVE A SEWER, PROVIDE WATER MAIN PROTECTION PER STANDARD SPECIFICATIONS FOR SEWER AND WATER MAIN CONSTRUCTION IN ILLINOIS, LATEST EDITION.
 - ELEVATIONS GIVEN FOR STORM SEWER STRUCTURES LOCATED IN CURB LINE ARE PAVEMENT ELEVATIONS.
 - ALL WATER MAIN SHALL BE 5'-6" BELOW FINISHED GRADE TO TOP OF MAINS UNLESS NOTED OTHERWISE.
 - ALL EXISTING UTILITIES SHOWN ARE NOT TO BE INTERPRETED AS THE EXACT ELEVATION OR LOCATION, OR AS THE ONLY OBSTACLES THAT MAY OCCUR ON THE SITE. CONTRACTOR SHALL VERIFY EXISTING CONDITIONS AND PROCEED WITH CAUTION AROUND ANY ANTICIPATED FEATURES.
 - THE UNDERGROUND UTILITY INFORMATION AS SHOWN HERE ON IS BASED, IN PART, UPON INFORMATION FURNISHED BY UTILITY COMPANIES AND THE LOCAL MUNICIPALITY. WHILE THIS INFORMATION IS BELIEVED TO BE RELIABLE, ITS ACCURACY AND COMPLETENESS CANNOT BE GUARANTEED NOR CERTIFIED.
 - ALL SANITARY AND STORM SEWER LENGTHS SHOWN ARE CENTER OF MANHOLE TO CENTER OF MANHOLE OR STORM MANHOLE TO FES.
 - CONTRACTOR SHALL CORE AND BOOT ALL PIPE ENTRANCES TO EXISTING SANITARY MANHOLES.
 - EXTERNAL CHIMNEY SEALS ARE REQUIRED ON PROPOSED AND ADJUSTED EXISTING SANITARY MANHOLES.
 - SOME EXISTING ITEMS TO BE REMOVED HAVE BEEN DELETED FROM THIS PLAN FOR CLARITY. SEE DEMOLITION PLAN FOR ITEMS DELETED.
 - ALL D.I. WATERMAIN PIPE AND D.I. WATERMAIN FITTINGS SHALL BE WRAPPED.

UTILITY CROSSINGS

① ST OVER WM B/P ST = 764.40 T/P WM = 762.90 *LOWER WM*	④ ST OVER SAN B/P ST = 766.01 T/P SAN = 765.70 *CRITICAL CROSSING*
② ST OVER SAN B/P ST = 766.60 T/P SAN = 766.31 *CRITICAL CROSSING*	
③ ST OVER SAN B/P ST = 766.20 T/P SAN = 766.12 *CRITICAL CROSSING*	

NOTE: WATER AND SEWER CROSSINGS SHALL MEET STATE EPA SEPARATION AND PIPE MATERIAL REQUIREMENTS. (SEE DETAIL SHEET)



NO.	DATE	DESCRIPTION	BY	CHK

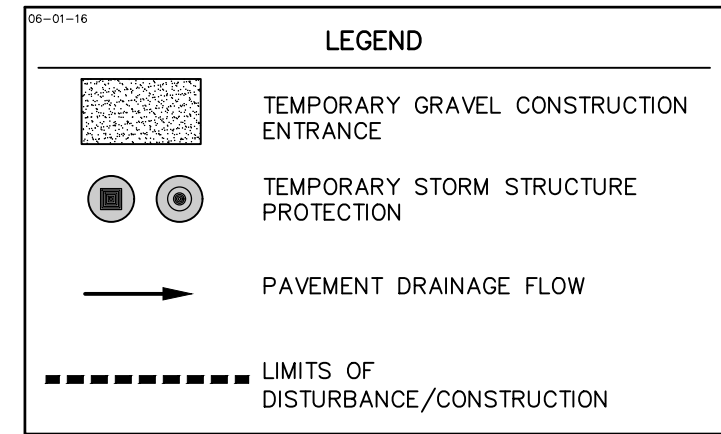
Manhard CONSULTING LTD.
 144 West Hillside, Naperville, IL 60563
 P. 630.892.7000
 F. 630.892.7001
 E. info@manhardconsulting.com
 WWW.MANHARDCONSULTING.COM
 Civil Engineers • Surveyors • Water Resources Engineers • Water & Wastewater Engineers • Landscape Architects • Planners
 Construction Managers • Environmental Scientists • Landscape Architects • Planners

EASTGATE CROSSING - COMMERCIAL OUTLOT
 CITY OF NAPERVILLE, ILLINOIS
 UTILITY PLAN

PROJ. MGR.: KJC
 PROJ. ASSOC.: JRM
 DRAWN BY: AS
 DATE: 04-21-22
 SCALE: 1" = 20'
 SHEET 7 OF 14
 NCPNVI01

ISSUE FOR PERMIT - NOT FOR CONSTRUCTION

- CONSTRUCTION SEQUENCE:**
1. PROVIDE STABILIZED CONSTRUCTION ENTRANCE.
 2. CONSTRUCT TEMPORARY DITCHES, SWALES, SEDIMENT TRAPS AND/OR BASINS.
 3. STRIP EXISTING TOPSOIL FROM PROPOSED LIMITS OF DISTURBANCE.
 4. CUT AND FILL SITE TO PLAN SUB-GRADE.
 5. CONSTRUCT UNDERGROUND IMPROVEMENTS, I.E. SANITARY SEWER WATERMAIN AND STORM SEWER**, ETC.
 6. CONSTRUCT PAVEMENT IMPROVEMENTS PER PLAN.
 7. COMPLETE CONSTRUCTION OF SITE WITH PERMANENT STABILIZATION.
 8. REMOVE TEMPORARY EROSION AND SEDIMENT CONTROL MEASURES.
- ** INSTALL INLET PROTECTION AROUND DRAINAGE STRUCTURES AS CONSTRUCTED.

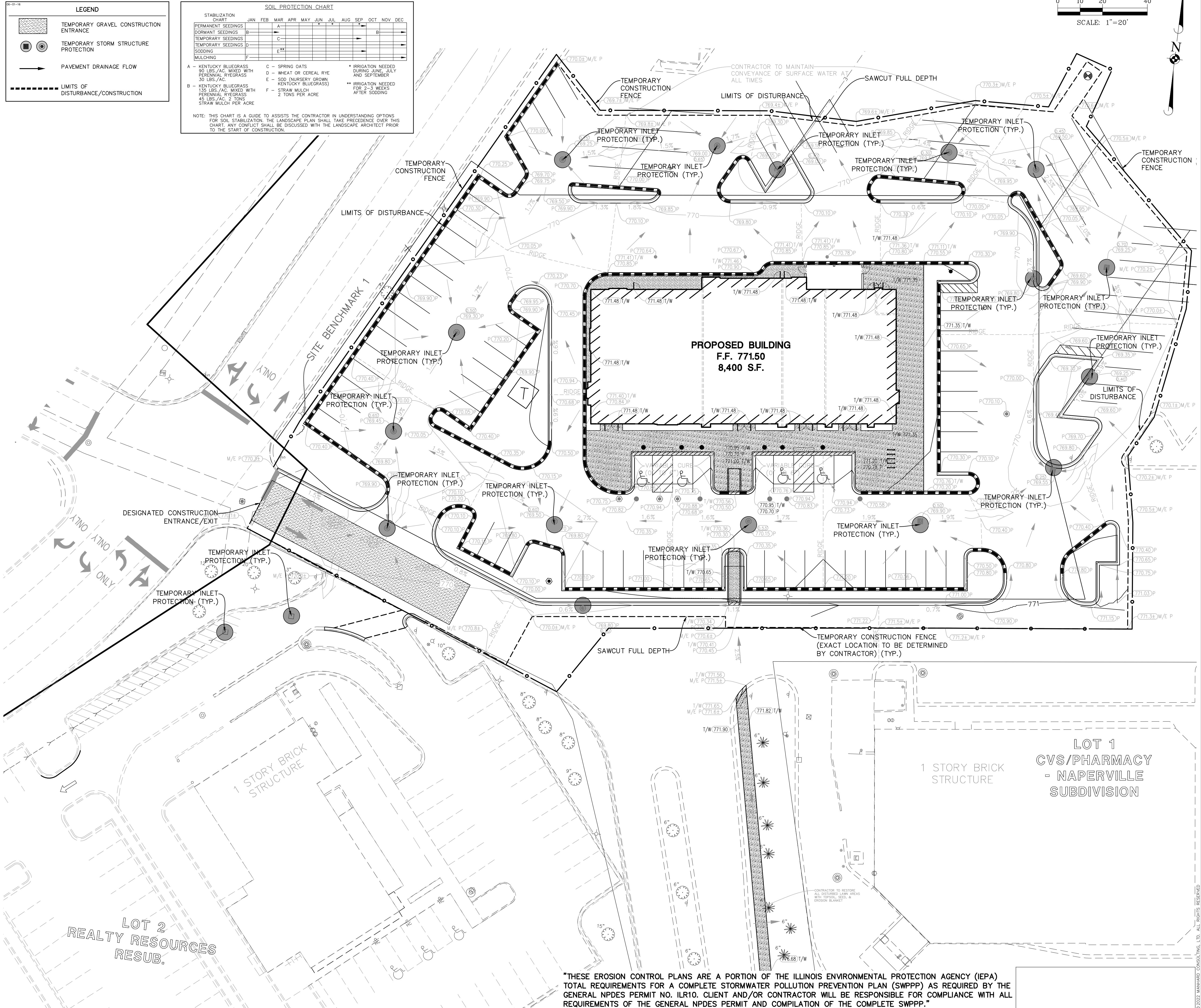


SOIL PROTECTION CHART

PERMANENT SEEDINGS	TEMPORARY SEEDINGS	SOODING	MULCHING
A - KENTUCKY BLUEGRASS 90 LBS./AC. MIXED WITH PERENNIAL RYEGRASS 30 LBS./AC.	B - KENTUCKY BLUEGRASS 130 LBS./AC. MIXED WITH PERENNIAL RYEGRASS 45 LBS./AC. 2 TONS STRAW MULCH PER ACRE	C - SPRING OATS D - WHEAT OR CEREAL RYE E - SOD (NURSERY GROWN KENTUCKY BLUEGRASS)	F - STRAW MULCH 2 TONS PER ACRE

NOTE: THIS CHART IS A GUIDE TO ASSIST THE CONTRACTOR IN UNDERSTANDING OPTIONS FOR SOIL STABILIZATION. THE LANDSCAPE PLAN SHALL TAKE PRECEDENCE OVER THIS CHART. ANY CONFLICT SHALL BE DISCUSSED WITH THE LANDSCAPE ARCHITECT PRIOR TO THE START OF CONSTRUCTION.

- SOIL EROSION AND SEDIMENTATION CONTROL GENERAL NOTES:**
1. ALL VEGETATIVE AND STRUCTURAL EROSION CONTROL PRACTICES SHALL BE CONSTRUCTED AND MAINTAINED IN ACCORDANCE WITH THE MINIMUM STANDARDS AND SPECIFICATIONS OF THE "ILLINOIS URBAN MANUAL".
 2. MAINTENANCE AND REPLACEMENT OF EROSION CONTROL ITEMS, WHEN DIRECTED BY THE OWNER, SHALL BE CONSIDERED AS INCIDENTAL TO THE CONTRACT.
 3. THE CONTRACTOR SHALL INSPECT ALL EROSION CONTROL MEASURES AT LEAST ONCE EVERY SEVEN (7) CALENDAR DAYS AND WITHIN 24 HOURS OF THE END OF A STORM THAT IS 0.5 INCHES OR GREATER OR EQUIVALENT SNOWFALL. ANY NECESSARY REPAIRS OR CLEANUP TO MAINTAIN THE EFFECTIVENESS OF SAID MEASURES SHALL BE MADE IMMEDIATELY.
 4. INSTALL ALL PERIMETER SILT FENCING PRIOR TO ANY CLEARING OR GRADING. ON-SITE SEDIMENT CONTROL MEASURES AS SHOWN AND SPECIFIED BY THIS EROSION AND SEDIMENTATION CONTROL PLAN SHALL BE CONSTRUCTED AND FUNCTIONAL PRIOR TO INITIATING CLEARING, GRADING, STRIPPING, EXCAVATION OR FILLING ACTIVITIES ON THE SITE.
 5. STORM WATERS FALLING ON THE ENTIRE SITE SHALL BE DIVERTED INTO THE DETENTION BASIN, PRIOR TO BEGINNING MASS EXCAVATION. THE CONTRACTOR SHALL CONSTRUCT DITCHES, SWALES, SEDIMENTATION TRAPS AND SILTATION CONTROL MEASURES AS REQUIRED TO INTERCEPT SURFACE WATERS BEFORE THEY FLOW ONTO ADJACENT PROPERTY AND CONVEY THEM TO THE DETENTION BASIN.
 6. STABILIZATION OF DISTURBED AREAS MUST BE INITIATED IMMEDIATELY WHENEVER ANY CLEARING, GRADING, EXCAVATING OR OTHER EARTH DISTURBING ACTIVITIES HAVE PERMANENTLY CEASED ON ANY PORTION OF THE SITE, OR TEMPORARILY CEASED ON ANY PORTION OF THE SITE AND WILL NOT RESUME FOR A PERIOD EXCEEDING 14 CALENDAR DAYS. STABILIZATION OF DISTURBED AREAS MUST BE INITIATED WITHIN 1 WORKING DAY OF PERMANENT OR TEMPORARY CESSATION OF EARTH DISTURBING ACTIVITIES AND SHALL BE COMPLETED AS SOON AS POSSIBLE BUT NOT LATER THAN 14 DAYS FROM THE INITIATION OF STABILIZATION WORK IN AN AREA.
 7. TEMPORARY SEED MIXTURE SHALL BE APPLIED AT 64 LBS./ACRE.
 8. INLET PROTECTION SHALL BE INSTALLED UNDER THE GRATING OF EACH DRAINAGE STRUCTURE.
 9. DURING DEWATERING OPERATIONS, WATER WILL BE PUMPED INTO SEDIMENT BASINS OR SILT TRAPS. DEWATERING DIRECTLY INTO FIELD TILES OR STORMWATER STRUCTURES IS PROHIBITED.
 10. WATER PUMPED DURING CONSTRUCTION OPERATION SHALL BE FILTERED.
 11. DUST CONTROL SHALL BE PERFORMED ON A DAILY BASIS USING WATER DISPERSED FROM A TRUCK MOUNTED TANK WITH STANDARD DISCHARGE HEADER TO PROVIDE A UNIFORM RATE OF APPLICATION.
 12. TEMPORARY GRAVEL CONSTRUCTION ENTRANCES SHALL BE MAINTAINED, ADJUSTED OR RELOCATED AS NECESSARY TO PREVENT SEDIMENT FROM BEING TRACKED ONTO PUBLIC ROADWAYS. ANY SEDIMENT REACHING A PUBLIC ROAD SHALL BE REMOVED BY SHOVELING OR STREET CLEANING BEFORE THE END OF EACH WORKING DAY.
 13. ANY LOOSE MATERIAL THAT IS DEPOSITED IN THE FLOW LINE OF ANY GUTTER OR DRAINAGE STRUCTURE DURING CONSTRUCTION OPERATIONS SHALL BE REMOVED AT THE CLOSE OF EACH WORKING DAY.
 14. OVERLAND FLOW SHALL BE DIRECTED TO THE DETENTION BASIN PRIOR TO LEAVING THE SITE.
 15. THE EROSION CONTROL MEASURES INDICATED ON THE PLANS ARE THE MINIMUM REQUIREMENTS. ADDITIONAL MEASURES MAY BE REQUIRED, AS DIRECTED BY THE CLIENT OR OTHER JURISDICTIONAL GOVERNMENTAL ENTITIES.
 16. ALL EROSION AND SEDIMENTATION CONTROL MEASURES SHALL BE REMOVED AND DISPOSED OF IN ACCORDANCE WITH ALL JURISDICTIONAL GOVERNMENTAL AGENCY REQUIREMENTS WITHIN 30 DAYS OF FINAL STABILIZATION.



Manhard CONSULTING LTD.
 144 West Hill Street, Naperville, IL 60563
 Civil Engineers • Surveyors • Water Resources Engineers • Water & Wastewater Engineers • Environmental Scientists • Landscape Architects • Planners
 Construction Managers • Environmental Scientists • Landscape Architects • Planners

DATE: _____
 REVISIONS: _____
 DRAWN BY: _____
 CHECKED BY: _____
 PROJECT NO.: _____
 SHEET NO.: _____ OF _____
 SCALE: 1"=20'
 PERMITS: _____
 REVISED PER CITY REVIEW: _____

EASTGATE CROSSING - COMMERCIAL OUTLOT
 CITY OF NAPERVILLE, ILLINOIS
 SOIL EROSION AND SEDIMENT CONTROL PLAN

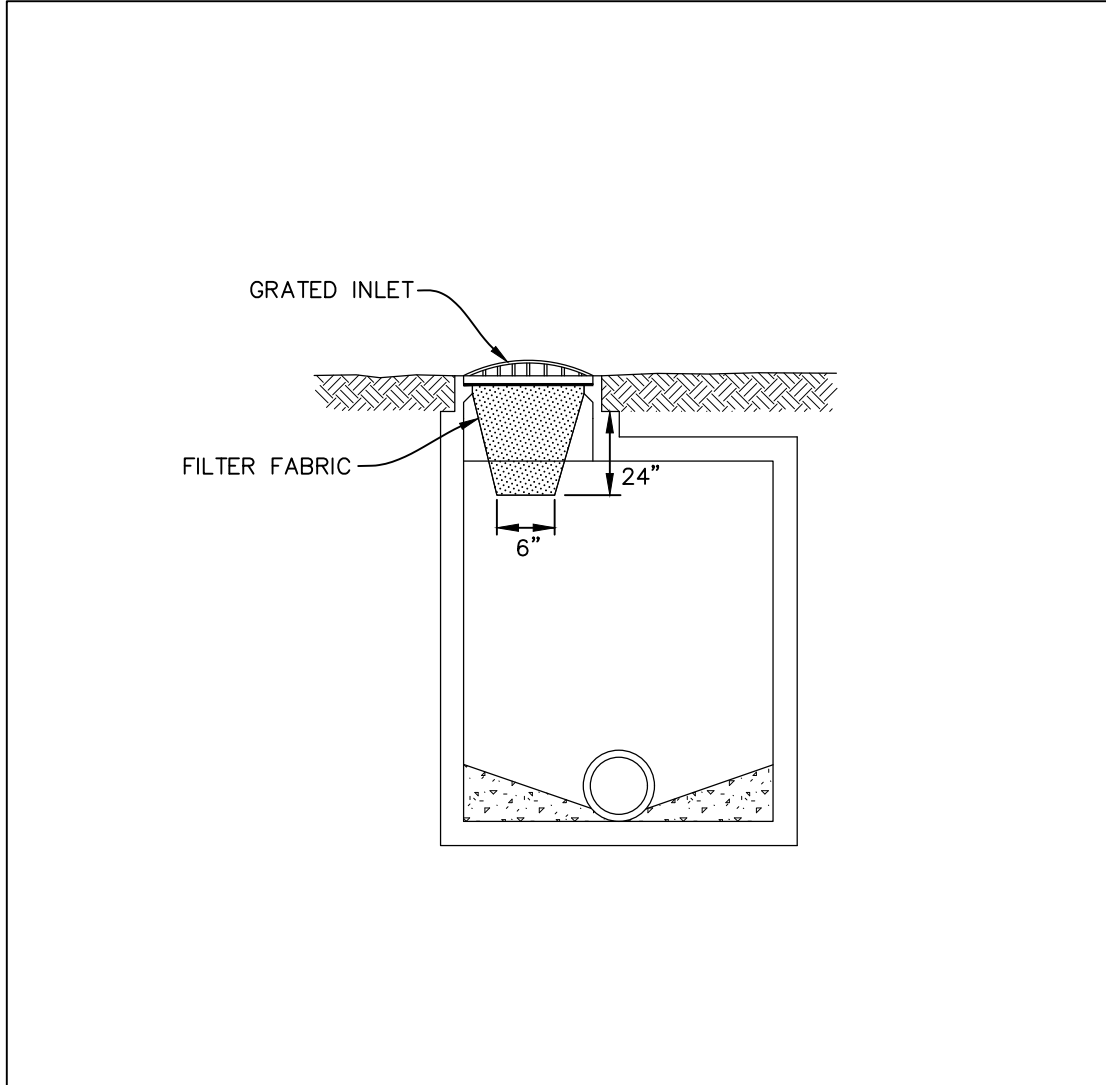
PROJ. MGR.: KJC
 PROJ. ASSOC.: JRM
 DRAWN BY: AS
 DATE: 04-21-22
 SCALE: 1"=20'
 SHEET
8 OF **14**
 NCPNV101

ISSUE FOR PERMIT - NOT FOR CONSTRUCTION

April 21, 2022 - 09:02 - Del Name: P:\Naperville\Eastgate\Drawings\Plan Set\Buildout and Outlet\Outlet\08-09-SSCP-DETAILS.dwg - Updated By: JRM

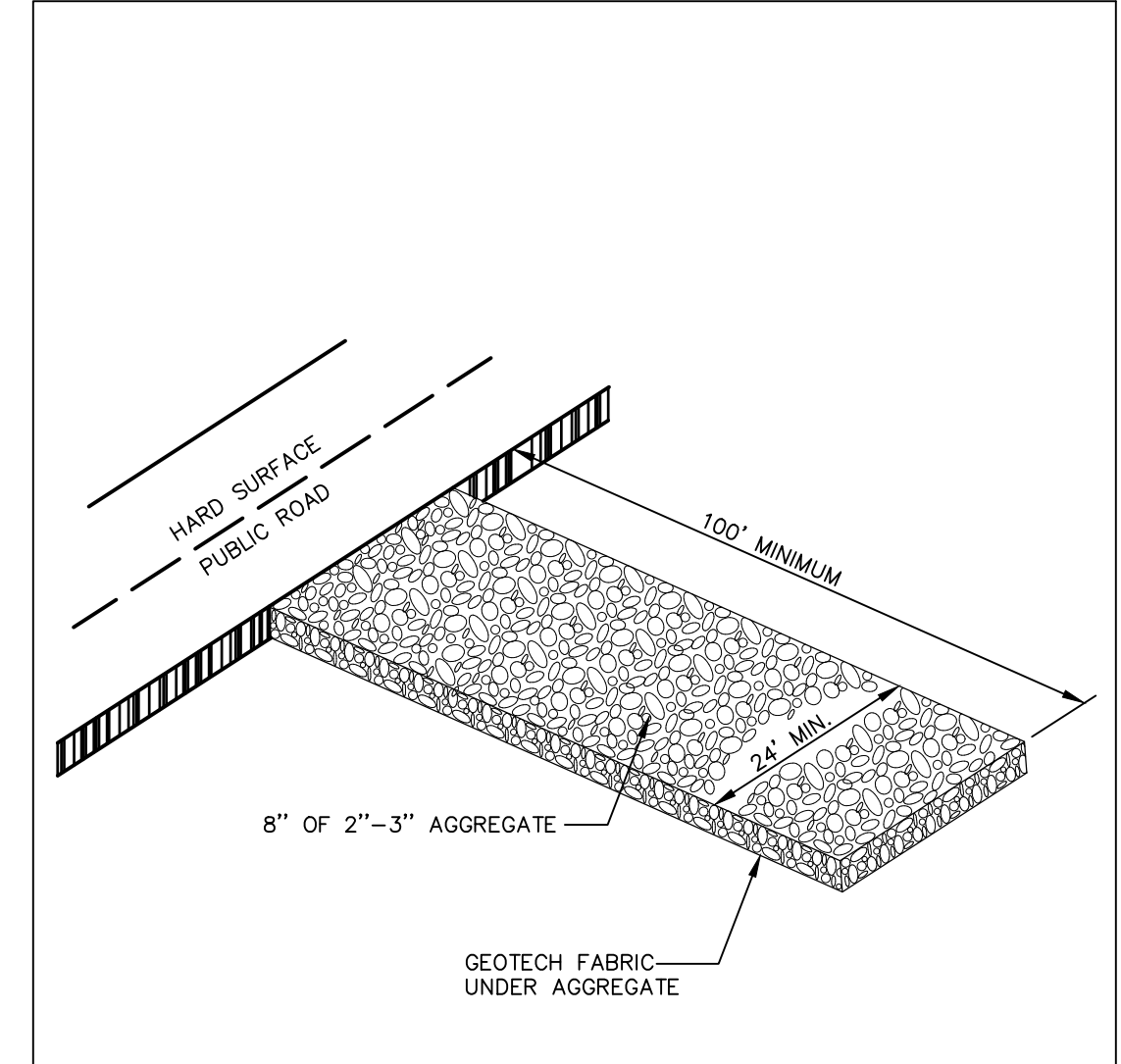
THESE EROSION CONTROL PLANS ARE A PORTION OF THE ILLINOIS ENVIRONMENTAL PROTECTION AGENCY (IEPA) TOTAL REQUIREMENTS FOR A COMPLETE STORMWATER POLLUTION PREVENTION PLAN (SWPPP) AS REQUIRED BY THE GENERAL NPDES PERMIT NO. ILR10. CLIENT AND/OR CONTRACTOR WILL BE RESPONSIBLE FOR COMPLIANCE WITH ALL REQUIREMENTS OF THE GENERAL NPDES PERMIT AND COMPILATION OF THE COMPLETE SWPPP.

April 21, 2022 - 09:02 Des Name: P:\NCPN\01_Venue\Ena\Final Drawings\Plan Set\Buildout_and Outlets\Outlet\08-09-SSCP-DETAILS.dwg Updated By: Miller



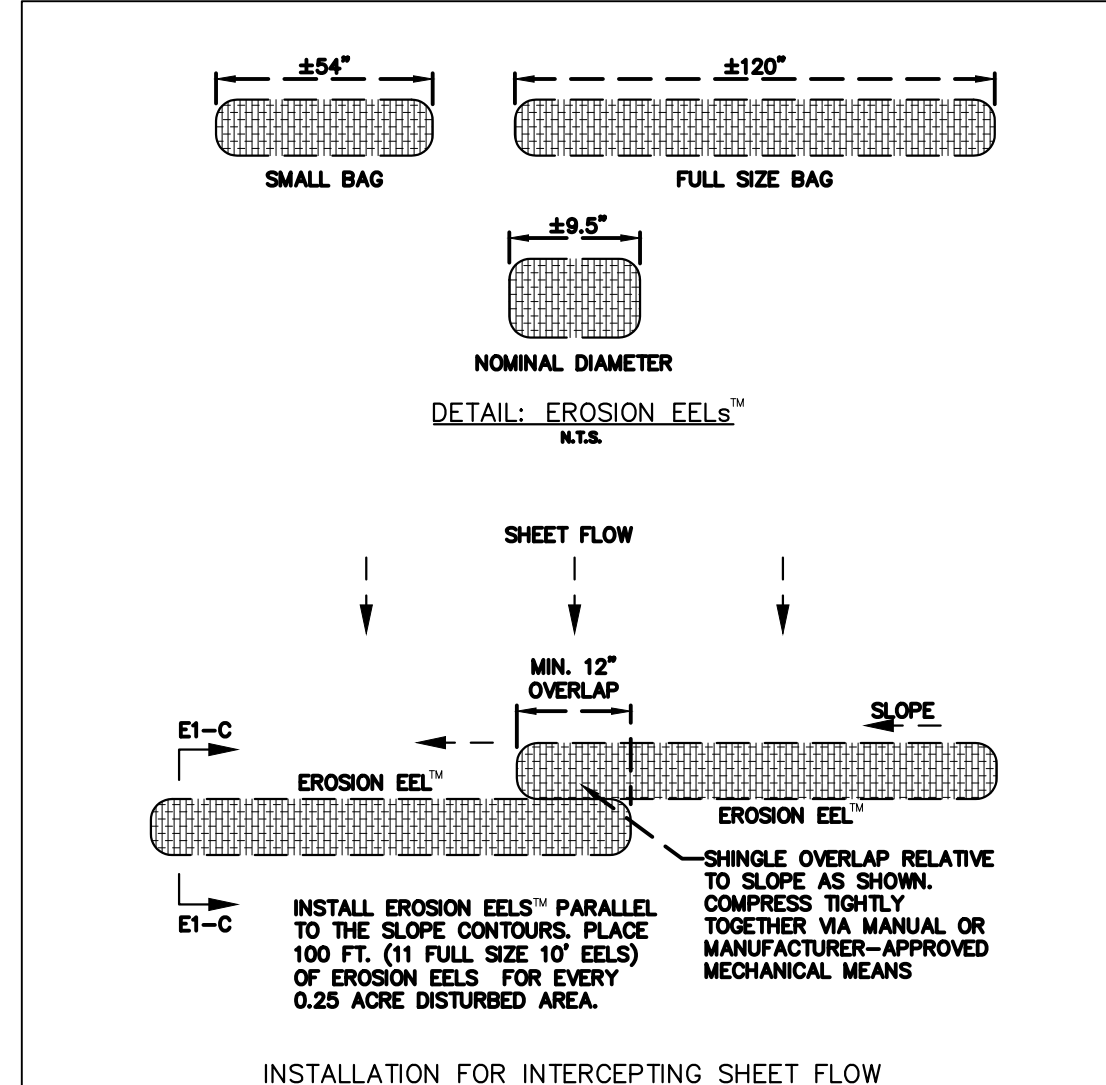
NOTE:
 1. CONTRACTOR HAS THE OPTION OF USING A MANUFACTURED PRODUCT SUCH AS DANDY BAG, IPP INLET FILTER, FLEXSTORM OR APPROVED EQUAL.
 2. FOR CURB STRUCTURES, CONTRACTOR HAS THE OPTION OF USING A MANUFACTURED PRODUCT SUCH AS DANDY CURB SACK OR APPROVED EQUAL.

06-01-15
FILTER BASKET INLET SEDIMENT FILTER
 S-FC-ST-FB-INLET-PROTECT



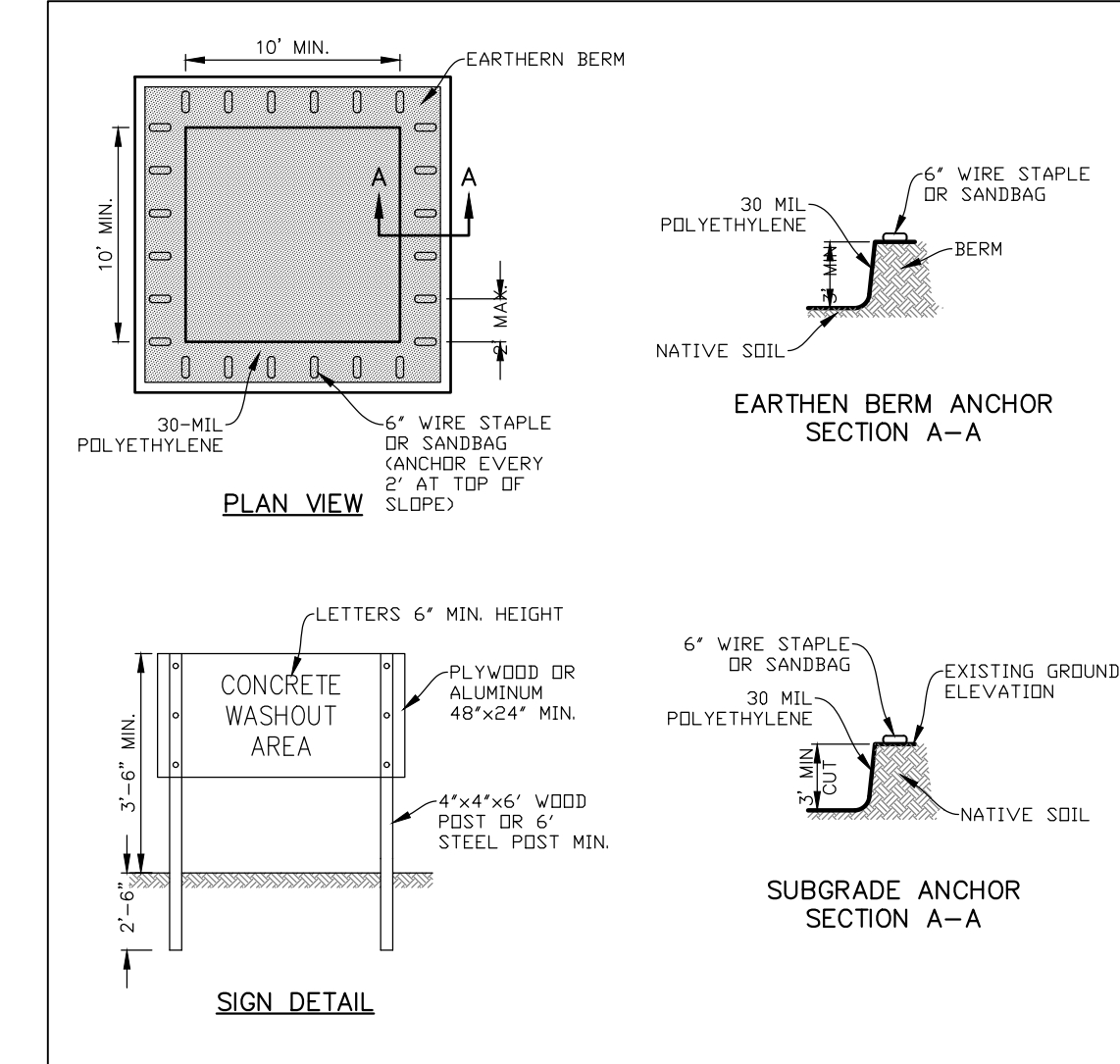
NOTE:
 PERIODIC TOP DRESSING OF THE CONSTRUCTION EXIT MAY BE REQUIRED TO PREVENT TRACK OUT.

06-01-15
GRAVEL CONSTRUCTION ACCESS DETAIL
 S-FC-CONST-ENTRANCE



NOTE:
 EROSION EELSSM SHALL BE INSTALLED IN ACCORDANCE WITH MANUFACTURER'S RECOMMENDATIONS.

06-01-15
TYPICAL EROSION EEL
 S-FC-EE



NOTES:
 1. MAINTAINING TEMPORARY CONCRETE WASHOUT FACILITIES SHALL INCLUDE REMOVING AND DISPOSING OF HARDENED CONCRETE AND/OR SLURRY AND RETURNING THE FACILITIES TO A FUNCTIONAL CONDITION.
 2. FACILITY SHALL BE CLEANED OR RECONSTRUCTED IN A NEW AREA ONCE WASHOUT BECOMES TWO-THIRDS FULL.

06-01-15
CONCRETE WASHOUT DETAIL
 S-FC-CONC-WASHOUT

SHOULD A CONFLICT ARISE BETWEEN MANHARD DETAILS AND THE VILLAGE DETAILS, THE VILLAGE DETAILS SHALL TAKE PRECEDENCE.

DATE									
REVISIONS									
DRAWN BY									JRM

Manhard CONSULTING LTD
 150 West Illinois Street, Naperville, IL 60563
 (630) 335-8800
 www.manhardconsulting.com
 Civil Engineers • Surveyors • Water Resource Engineers • Water & Wastewater Engineers
 Construction Managers • Environmental Scientists • Landscape Architects • Planners

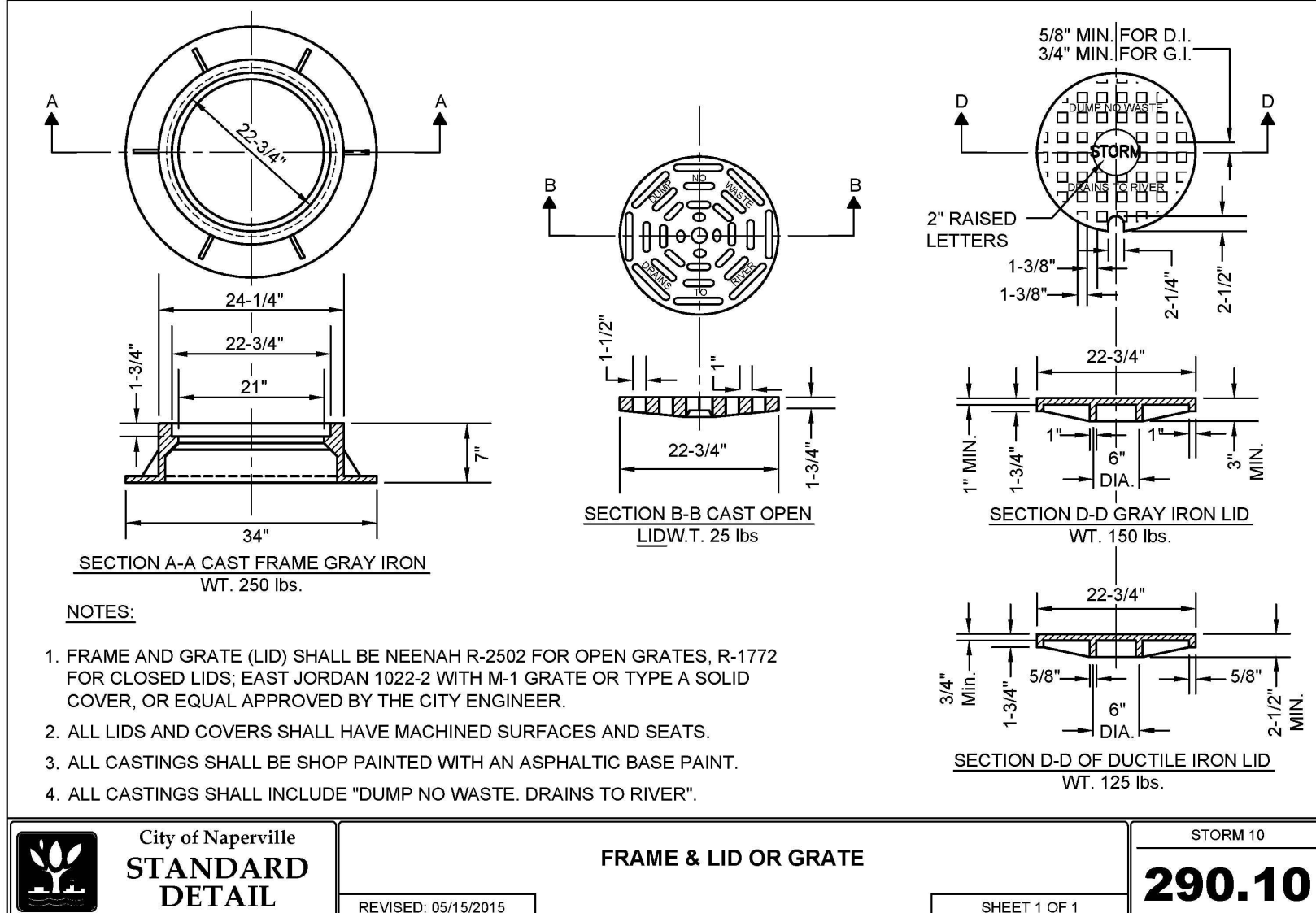
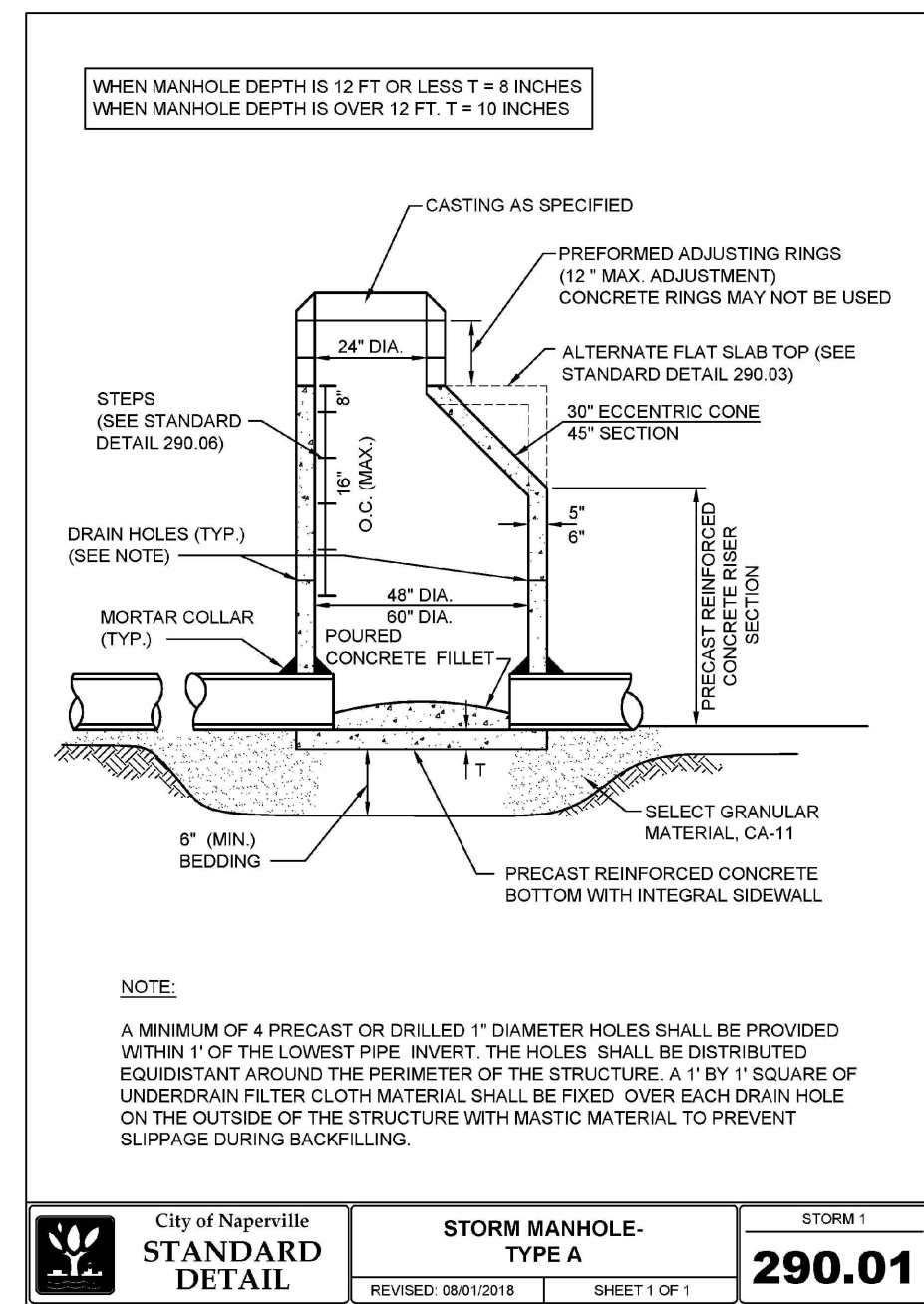
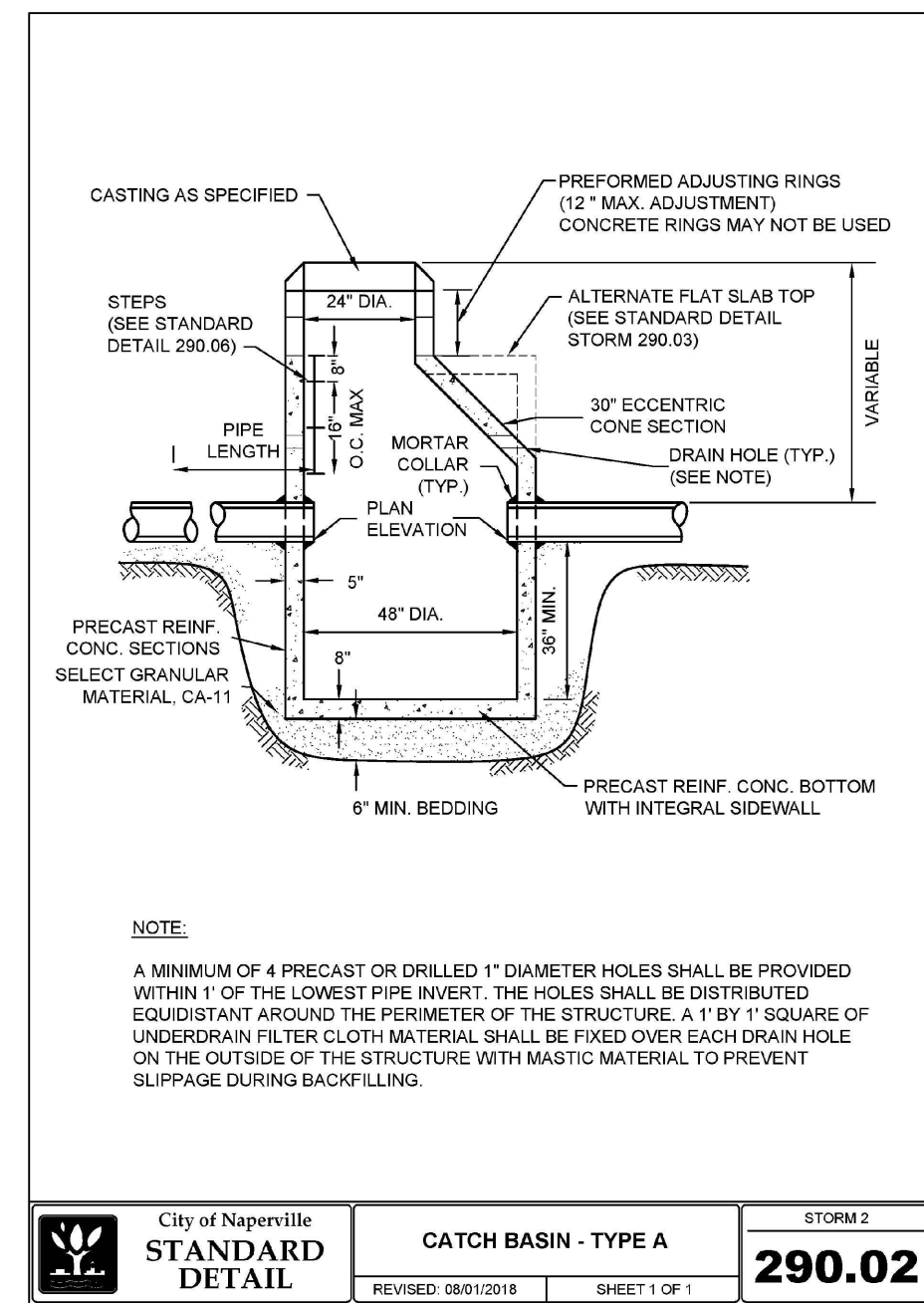
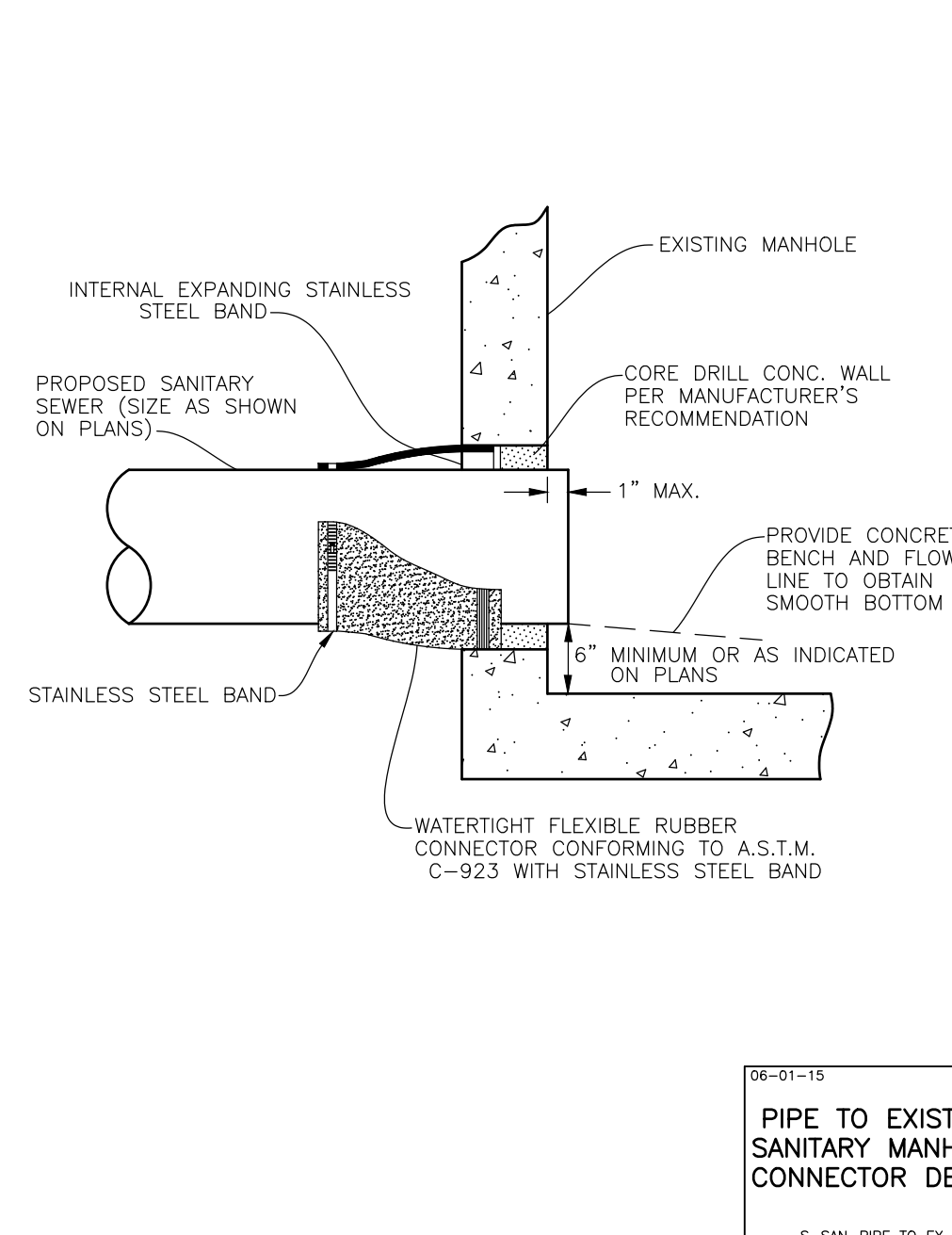
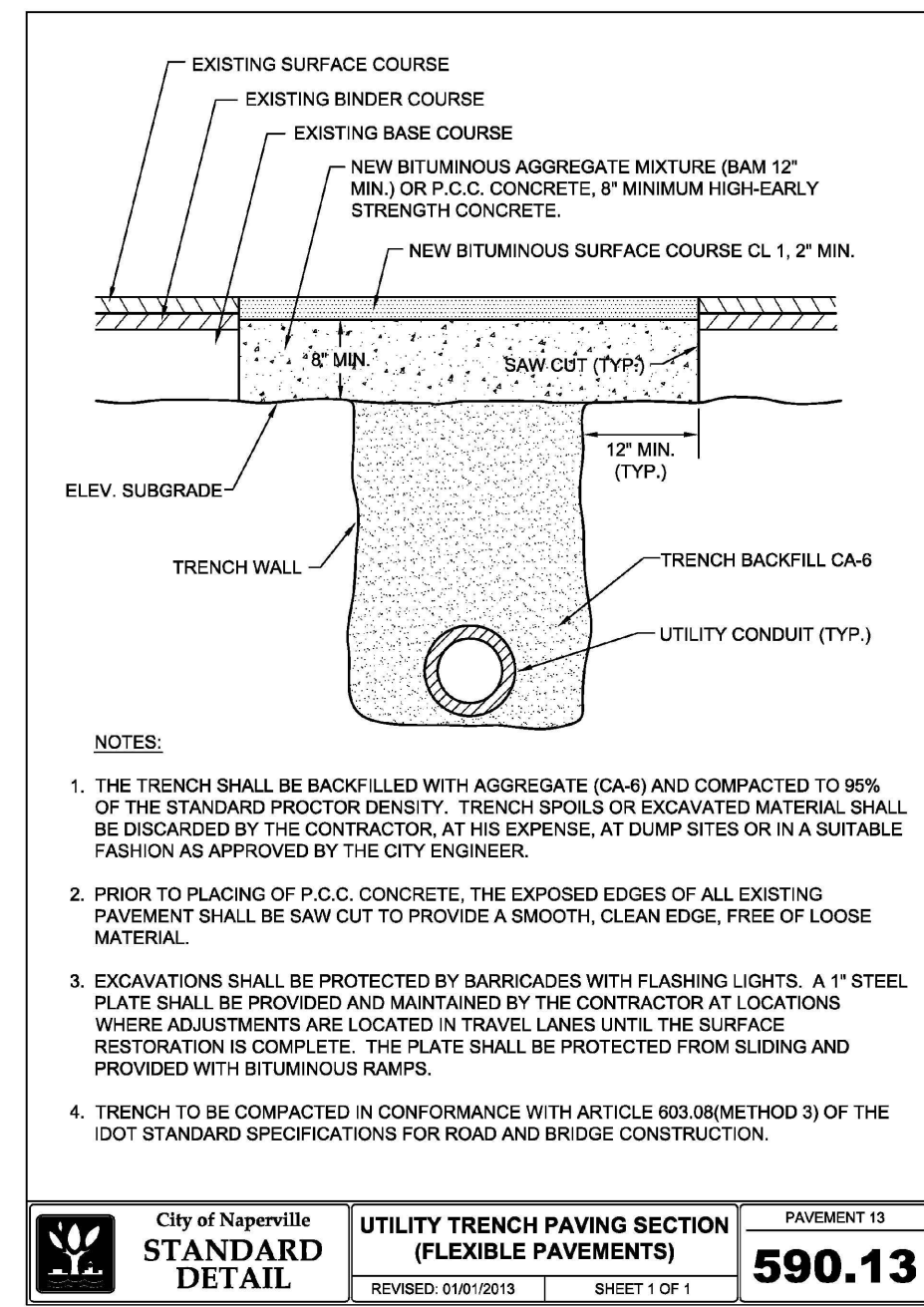
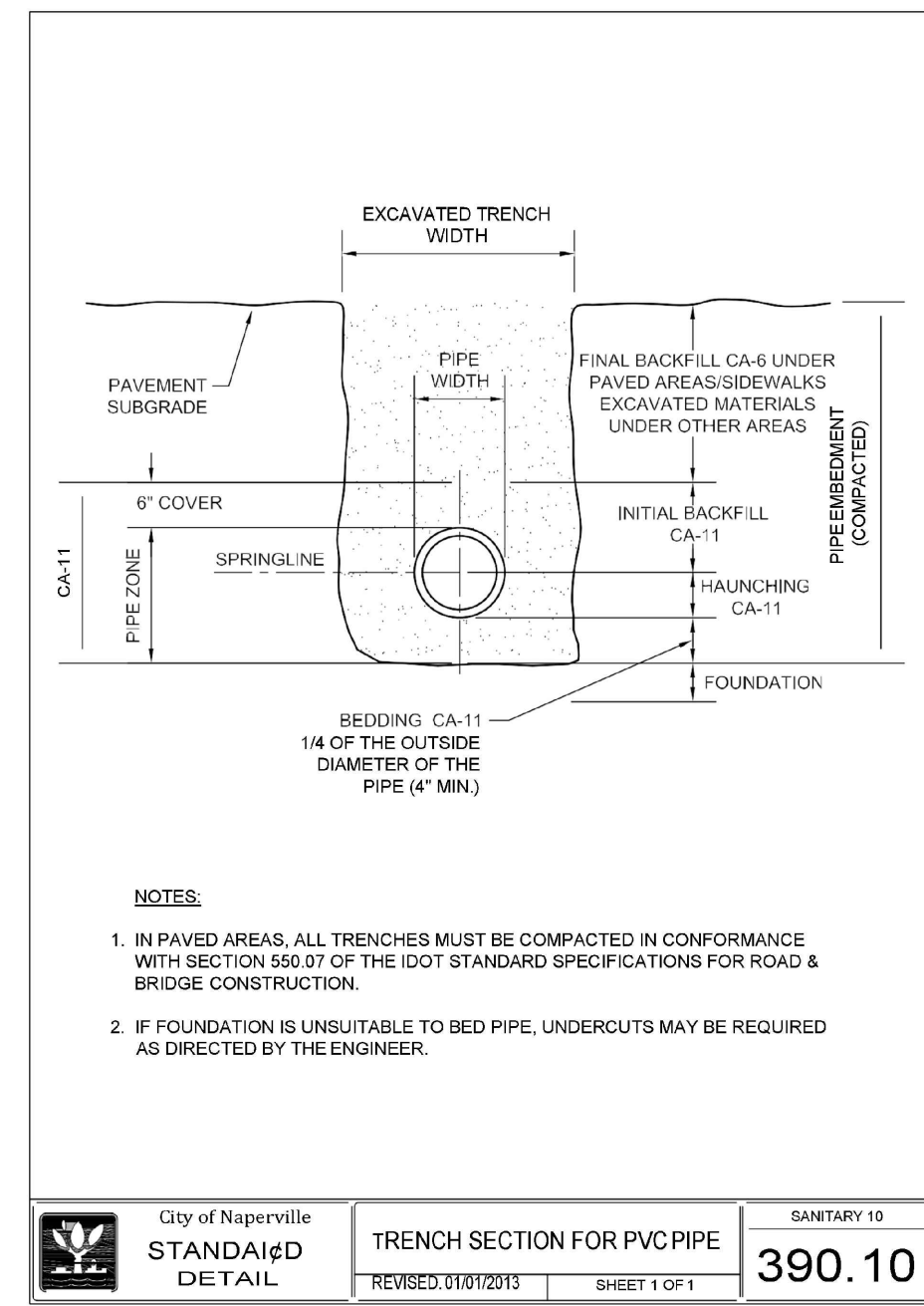
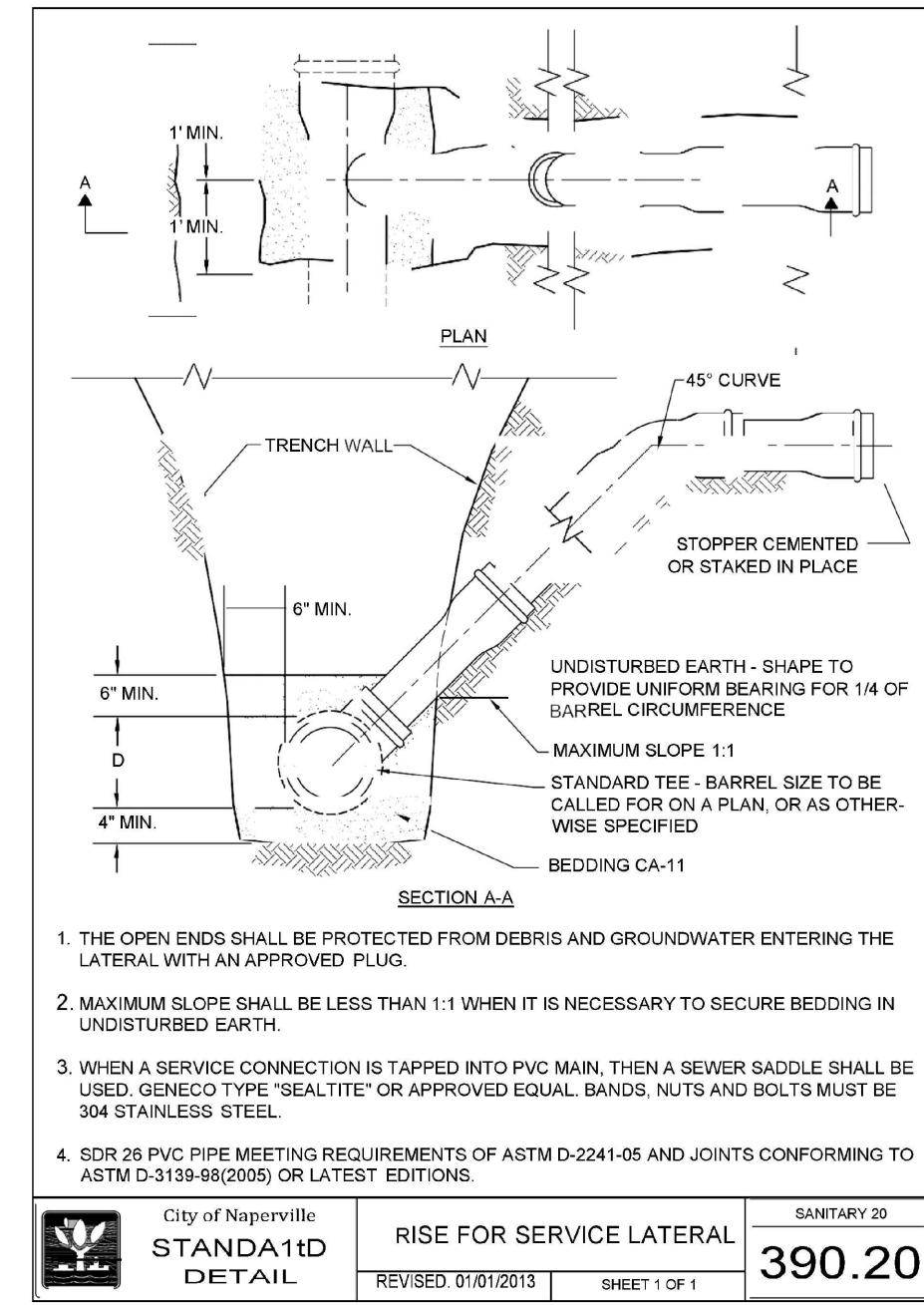
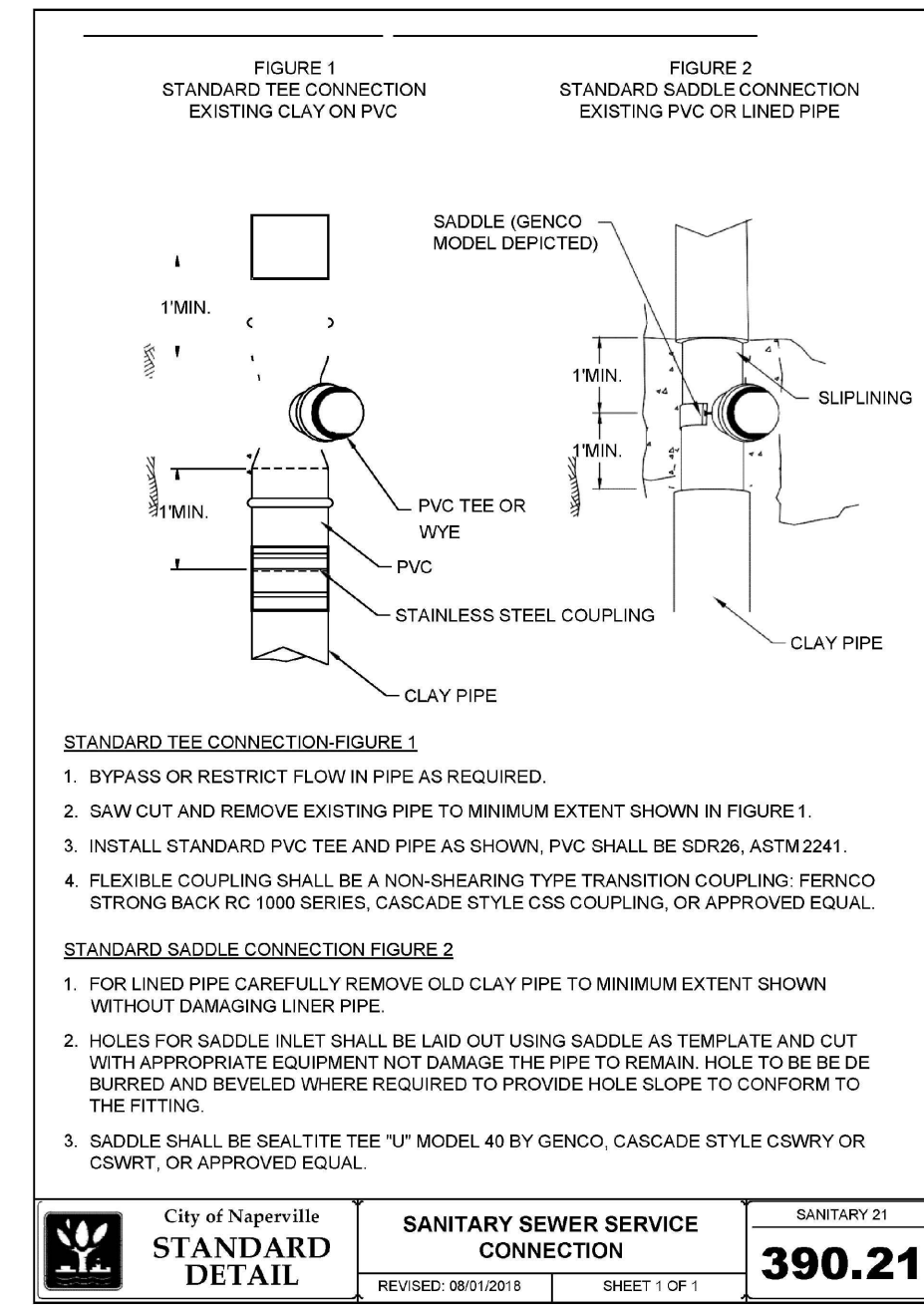
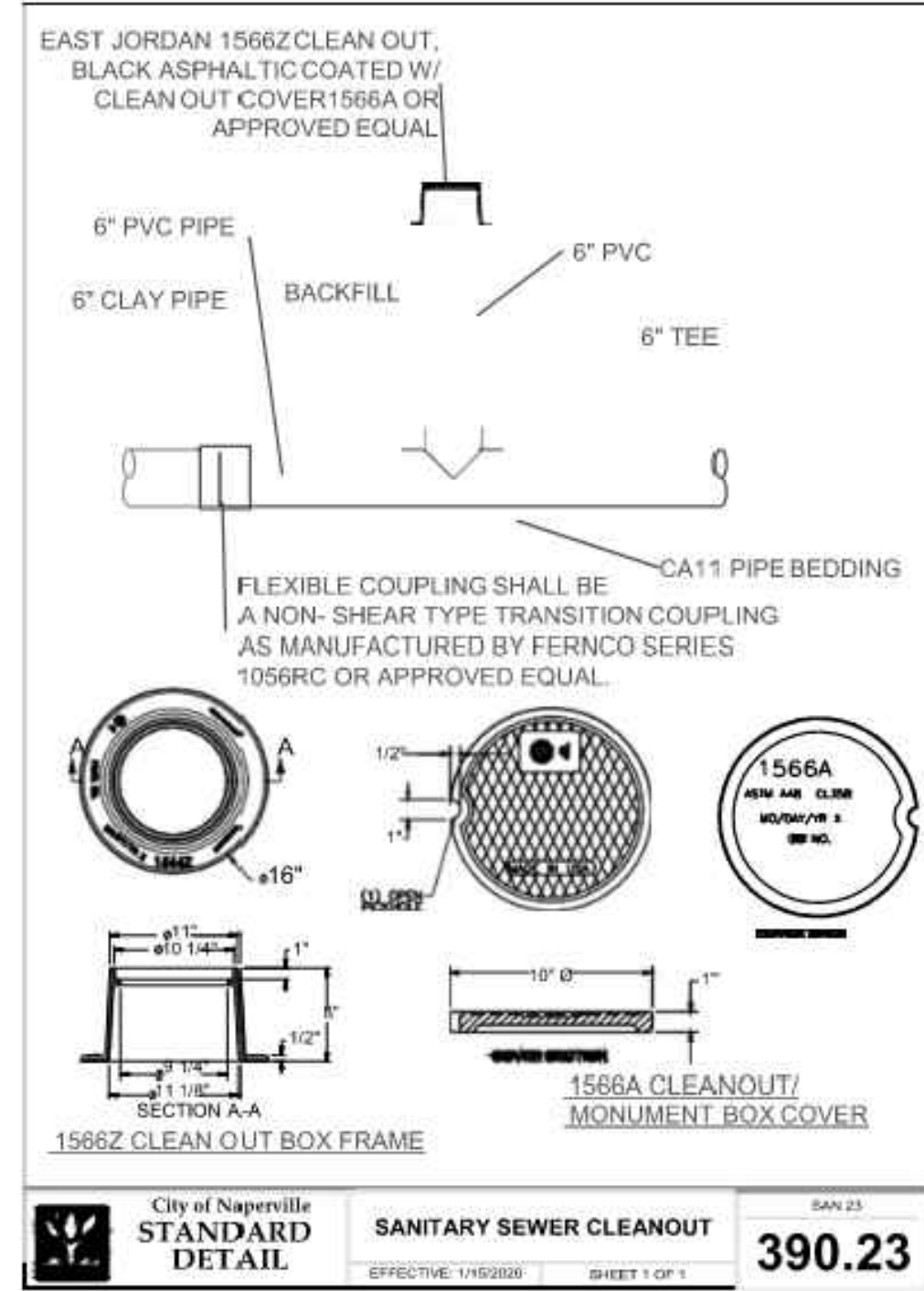
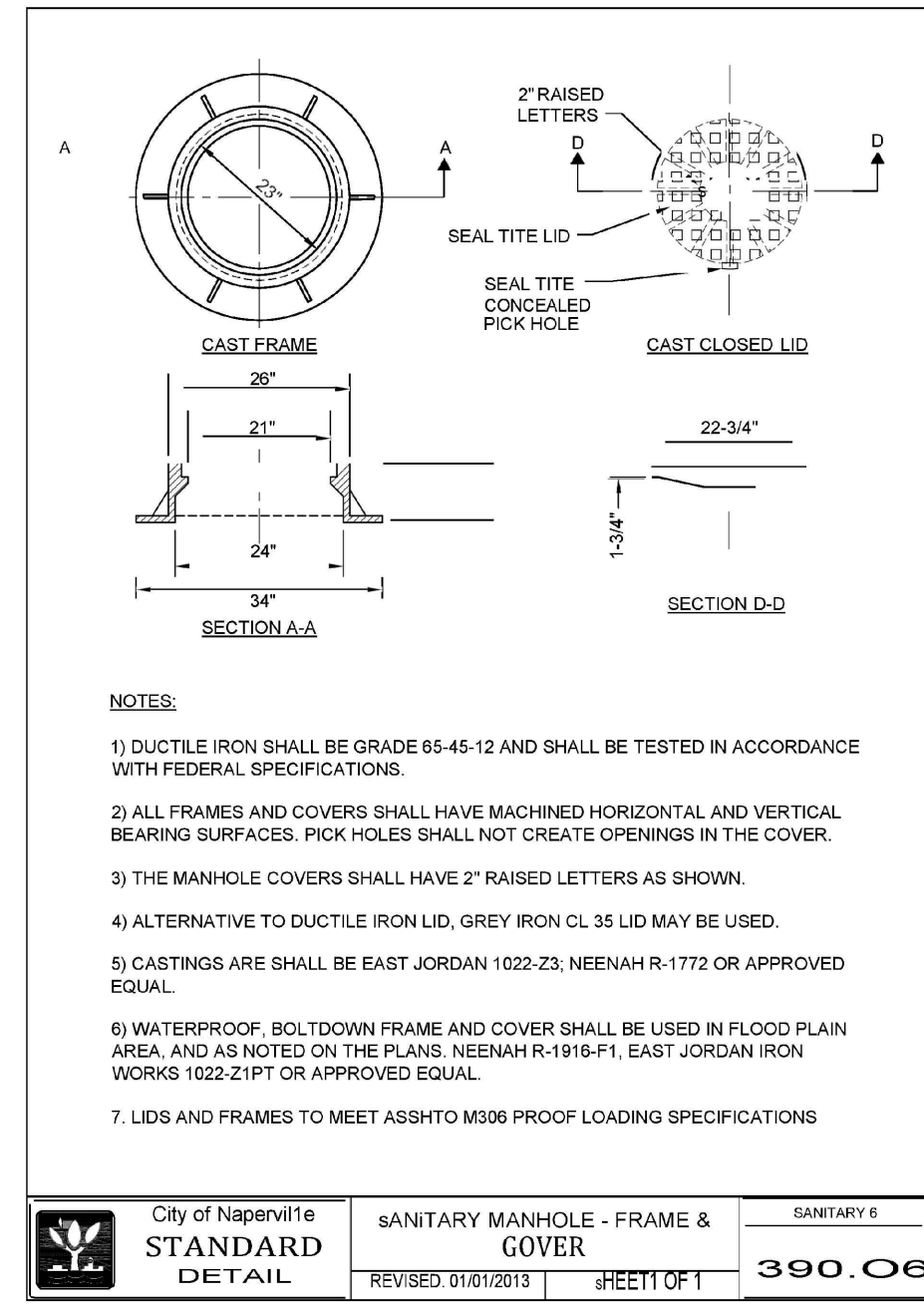
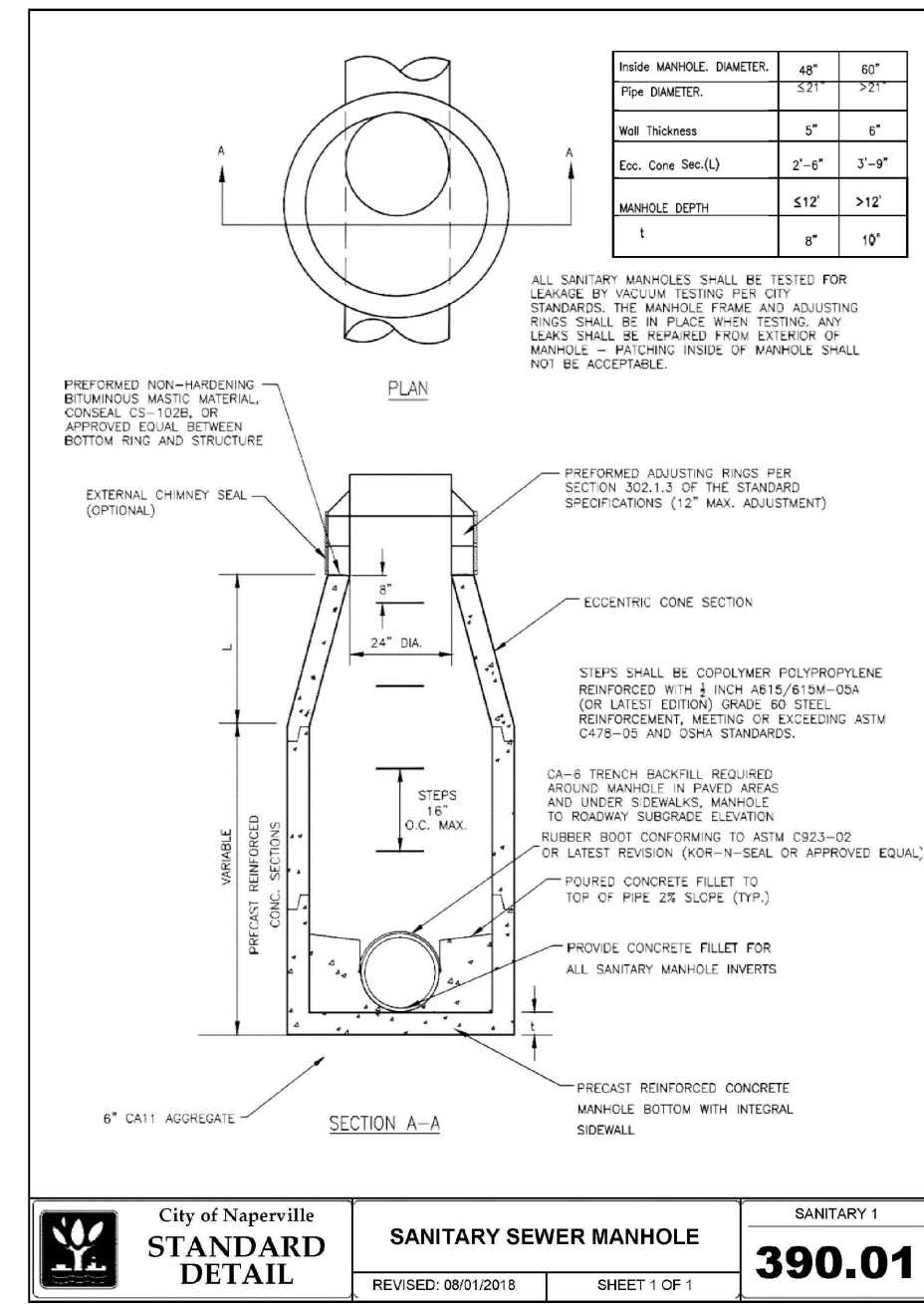
EASTGATE CROSSING - COMMERCIAL OUTLOT
CITY OF NAPERVILLE, ILLINOIS
SOIL EROSION AND SEDIMENT CONTROL DETAILS

PROJ MGR: KJC
 PROJ ASSOC: JRM
 DRAWN BY: AS
 DATE: 04-21-22
 SCALE: N.T.S.

SHEET
9 OF 14
 NCPNVL01

© 2022 MANHARD CONSULTING, LTD. ALL RIGHTS RESERVED.

ISSUE FOR PERMIT - NOT FOR CONSTRUCTION



SHOULD A CONFLICT ARISE BETWEEN MANHARD DETAILS AND THE VILLAGE DETAILS, THE VILLAGE DETAILS SHALL TAKE PRECEDENCE.

Manhard CONSULTING LTD.
 144 West Hillside, Suite 200, Naperville, IL 60563
 Civil Engineers • Surveyors • Water & Wastewater Engineers • Construction Managers • Environmental Scientists • Landscape Architects • Planners

EASTGATE CROSSING - COMMERCIAL OUTLOT
 CITY OF NAPERVILLE, ILLINOIS
 CONSTRUCTION DETAILS

PROJ. MGR: KJC
 PROJ. ASSOC: JRM
 DRAWN BY: ---
 DATE: 04-21-22
 SCALE: N.T.S.

SHEET 10 OF 14
 NCPNV101

ISSUE FOR PERMIT - NOT FOR CONSTRUCTION

STORM SEWER TRENCH SECTION IN PAVED AREAS

REVISED: 01/6/2013 SHEET 1 OF 1

290.20

City of Naperville STANDARD DETAIL

NOTES:
 1. TRENCH BACKFILL MATERIAL SHALL BE COMPACTED IN ACCORDANCE WITH SECTION 550.07 OF THE IDOT STANDARD SPECIFICATIONS FOR ROAD AND BRIDGE CONSTRUCTION.
 2. THIS DETAIL SHALL BE USED WHEREVER THE TRENCH IS MADE IN THE PROPOSED ROADWAY SUBGRADE, AND WHEREVER THE INNER EDGE OF THE TRENCH IS CLOSER THAN 2' TO THE EDGE OF THE PROPOSED PAVEMENT, CURB AND GUTTER, AND SIDEWALK.

STORM SEWER TRENCH SECTION IN NON-PAVED AREAS

REVISED: 01/6/2013 SHEET 1 OF 1

290.21

City of Naperville STANDARD DETAIL

NOTE:
 FOR PVC AND HDPE PIPE, BACKFILL WITH AGGREGATE MATERIAL (CA-6) TO 6" ABOVE THE TOP OF PIPE.

FRAME & GRATE FOR B-6.12 CURB & GUTTER

REVISED: 05/15/2015 SHEET 1 OF 1

290.11

City of Naperville STANDARD DETAIL

NOTES:
 1. FRAME AND GRATE SHALL BE NEENAH R-3273-A, EAST JORDAN IRON 7220, OR EQUAL APPROVED BY THE CITY ENGINEER.
 2. ALL CASTING SHALL BE SHOP PAINTED WITH AN ASPHALTIC BASE PAINT.
 3. SEE STANDARD DETAIL 590.20 FOR CORRESPONDING CURB.
 4. ALL CASTINGS SHALL INCLUDE "DUMP NO WASTE. DRAINS TO RIVER".

HYDRANT

REVISED: 06/19/2013 SHEET 1 OF 1

490.06

City of Naperville STANDARD DETAIL

NOTES:
 1. CHAIN AND CHAIN HOOKS SHALL BE REMOVED FROM HYDRANT.
 2. HYDRANT SHALL BE FACTORY PAINTED WITH 2 COATS OF TMECC VERSTATONE B2 HS (OR APPROVED EQUAL) SAFETY ORANGE.
 3. ALL FASTENERS/HARDWARE BELOW GRADE SHALL BE STAINLESS STEEL (GRADE 304 MIN.).

WATER MAIN TRENCH SECTION

REVISED: 01/6/2013 SHEET 1 OF 1

490.10

City of Naperville STANDARD DETAIL

NOTES:
 1. IN PAVED AREAS ALL TRENCHES SHALL BE COMPACTED IN ACCORDANCE WITH SECTION 550.07 OF THE IDOT STANDARD SPECIFICATIONS FOR ROAD AND BRIDGE CONSTRUCTION, METHOD 1, 95% MINIMUM STANDARD PROCTOR.
 2. DUCTILE IRON WATER MAIN TO BE CLASS 52. ALL DUCTILE IRON PIPE IS TO BE ENCASED IN POLYETHYLENE ENCASEMENT TO BE INSTALLED IN ACCORDANCE WITH AWWA C105/A21.5-98 (OR LATEST EDITION).
 3. STAINLESS STEEL NUTS, BOLTS/BOLTS, AND WASHERS, TYPE 304 OR BETTER, WILL BE REQUIRED ON ALL WATER MAIN INSTALLATIONS. THIS WOULD APPLY TO HYDRANTS, TAPPING SLEEVES, VALVES, FITTINGS, RESTRAINT, AND OTHER APPURTENANCES BURIED OR IN VALVE VAULTS. MECHANICAL JOINTS AND RESTRAINT GLANDS REQUIRE 304 STAINLESS STEEL T-BOLTS. AN ANTI-SIZE COMPOUND SHALL BE FACTORY APPLIED TO NUTS OR BOLTS - ANY DAMAGE TO THIS COATING SHALL BE REPAIRED WITH FIELD-APPLIED, APPROVED ANTI-SIZE COMPOUND THAT IS A MOLYBDENUM-BASE LUBRICANT, BOSTIK NEVER-SEIZ OR APPROVED EQUAL.

THRUST BLOCK

REVISED: 05/15/2013 SHEET 1 OF 1

490.11

City of Naperville STANDARD DETAIL

1. THRUST BLOCKING TO PREVENT MOVEMENT OF LINES UNDER PRESSURE AT BENDS, TEES, CAPS, VALVES, HYDRANTS, & AT POINTS SPECIFIED BY THE ENGINEER SHALL BE CLASS 50.
 2. CONCRETE A MINIMUM OF 12" THICK, PLACED BETWEEN SOLID GROUND AND THE FITTING, AND SHALL BE ANCHORED IN SUCH A MANNER THAT THE PIPE AND FITTING WILL BE ACCESSIBLE FOR REPAIRS.
 3. THRUST BLOCKS SHALL BE PLACED AT BENDS OF 11-1/4' OR MORE.
 4. PIPE BENDS TO BE POLYETHYLENE ENCASED.
 5. JOINT RESTRAINT AT BEND AND LENGTH OF PIPE EACH DIRECTION FROM BENDS AS REQUIRED BY THE CITY OF NAPERVILLE IF UNDISTURBED SOIL NOT AVAILABLE.
 6. THRUST BLOCK FOR PIPES LARGER THAN 12" MUST BE POURED IN PLACE.

VALVE VAULT WITH CAST DUCTILE IRON SLEEVE PRESSURE TAP

REVISED: 01/6/2013 SHEET 1 OF 1

490.02

City of Naperville STANDARD DETAIL

1) USE MEDALGO SERIES 1100 OR FORD UNI-FLANGE SERIES 1400 RETAINER GLANDS WITH STAINLESS STEEL T-BOLTS COATED WITH ANTI-SIZE COMPOUND.
 2) TAPPING SLEEVES SHALL BE CAST OR DUCTILE IRON MECHANICAL JOINT CONFORMING TO AWWA/C110/A21.10-82 (P/ER/UNION OR APPROVED EQUAL). EXISTING PIPE TO BE DISINFECTED PRIOR TO INSTALLATION OF TAPPING SLEEVE. TAPPING SLEEVE TO BE PRESSURE TESTED HYDROSTATICALLY TO OPERATING PRESSURE PLUS 50 PERCENT PRIOR TO MAKING PRESSURE CONNECTION.
 3) EXISTING PIPE TO BE DISINFECTED PRIOR TO INSTALLATION OF TAPPING SLEEVE AND TAPPING SLEEVE IS TO BE PRESSURE TESTED TO OPERATING PRESSURE PLUS 50 PERCENT PRIOR TO MAKING PRESSURE CONNECTION.
 4) DO NOT USE STAINLESS STEEL SLEEVE ON SIZE TAPS OR PIPES LARGER THAN 12" DIAMETER.
 5) IN THE EVENT IT IS NECESSARY TO USE A PRECAST BRIT BOTTOM FLOOR DUE TO SPACE CONSTRAINTS THE FLOOR MUST BE GROUTED WATER TIGHT.
 6) TAPPING VALVES SHALL CONFORM TO C105-99 OR LATEST REVISION AMERICAN SERIES 2500 RESILIENT GATE TAPPING VALVES WITH FLANGED X MECHANICAL JOINT ENDS OR APPROVED EQUAL.

LINE STOP TAPPING SLEEVE

REVISED: 01/6/2013 SHEET 1 OF 1

490.17

City of Naperville STANDARD DETAIL

SLEEVE TO BE PRESSURE RATED AT 150 PSI WORKING PRESSURE AND 225 PSI TEST PRESSURE.
 1. CONSTRUCTION TO BE ALL STAINLESS T-304, 18-8 STAINLESS STEEL, 1/4 GAUGE (MINIMUM).
 2. GASKETS TO PROVIDE 360 DEGREE PIPE COVERAGE IN ADDITION TO A FULL CIRCUMFERENCE BRASS SEAL GASKET.
 3. EXISTING PIPE TO BE DISINFECTED PRIOR TO INSTALLATION OF LINE STOP.
 4. STAINLESS STEEL TEST PORT AND PLUG SHALL BE PROVIDED AND THE LINE STOP SLEEVE IS TO BE PRESSURE TESTED PRIOR TO CUTTING THE EXISTING PIPE.
 5. V-LUGS SHALL BE FABRICATED TO THE SLEEVE AND DROP-IN STAINLESS STEEL BOLTS, NUTS AND WASHERS (18-8 MINIMUM GRADE) PROVIDED. NUTS SHALL BE COATED WITH ANTI-SIZE COMPOUND TO PREVENT GALLING.
 6. PROVIDE AS-BUILT FOR LOCATION AND ELEVATION OF TOP OF FLANGE ON RECORD DRAWINGS.
 7. ACCEPTABLE LINE STOP SLEEVES ARE HYDRA STOP PRIMER LINE STOP FITTING OF ALL STAINLESS STEEL CONSTRUCTION WITH DROP-IN BOLT OPTION AND SMITH BLAIR MODEL 685 ALL STAINLESS STEEL LINE STOP TAPPING SLEEVE WITH ALL BOLTS, NUTS, AND WASHERS AND BLIND FLANGES TO BE 18-8 TYPE 304 STAINLESS. STOPPLE (COMPLETION) TO BE DUCTILE IRON OR STAINLESS STEEL.

POLYETHYLENE ENCASEMENT

REVISED: 01/6/2013 SHEET 1 OF 1

490.15

City of Naperville STANDARD DETAIL

1. COVER BENDS, REDUCERS AND OTHER PIPE-SHAPED APPURTENANCES WITH POLYETHYLENE IN THE SAME MANNER AS THE PIPE.
 2. WRAP VALVES, TEES AND OTHER OOD-SHAPED APPURTENANCES WITH A FLAT SHEET OR SPLIT LENGTH OF POLYETHYLENE SHEET BY PASSING THE SHEET UNDER THE APPURTENANCES AND BRINGING IT UP AROUND THE BODY. MARK SEAMS BY BRINGING THE EDGES OF THE POLYETHYLENE SHEET TOGETHER, FOLDING OVER TWICE, AND TAPPING DOWN.
 3. POLYETHYLENE ENCASEMENT TO BE IN ACCORDANCE WITH A.W.W.A. C105-99 OR LATEST VERSION.
 4. COPPER SERVICE TAPS ARE TO BE WRAPPED WITH POLYETHYLENE OR A SUITABLE DIELECTRIC TAPE FOR A MINIMUM CLEAR DISTANCE OF 3" AWAY FROM THE MAIN.

VALVE VAULT - FRAME & COVER

REVISED: 01/6/2013 SHEET 1 OF 1

490.04

City of Naperville STANDARD DETAIL

NOTES:
 1. DUCTILE IRON SHALL BE GRADE 65-45-12 AND SHALL BE TESTED IN ACCORDANCE WITH FEDERAL SPECIFICATIONS.
 2. ALL FRAMES AND COVERS SHALL HAVE MACHINED HORIZONTAL AND VERTICAL BEARING SURFACES. PICK HOLES SHALL NOT CREATE OPENINGS IN THE COVER.
 3. THE MANHOLE COVERS SHALL HAVE RAISED LETTERS AS SHOWN.
 4. ALTERNATIVE TO DUCTILE IRON LID, GREY IRON CL 35 LID MAY BE USED.
 5. DIMENSIONS FOR CASTINGS ARE COMPARABLE TO EAST JORDAN 1022 OR NEENAH R-1772-G, HEAVY DUTY.
 6. LIDS AND FRAMES TO MEET AASHTO M308 PROOF LOADING SPECIFICATIONS.

WATER MAIN LOWERING

REVISED: 06-01-15

1. HORIZONTAL AND VERTICAL SEPARATION BETWEEN WATER MAINS AND SEWER SHALL COMPLY WITH IEPA REQUIREMENTS.
 2. CONTRACTOR MAY BEND WATER MAIN PIPE UNIFORMLY UNDER SEWERS WITHOUT USING FITTINGS, PROVIDED THAT JOINT DEFLECTION DOES NOT EXCEED 5 DEGREES PER JOINT FOR PIPE UNDER 14" IN DIAMETER AND 3 DEGREES PER JOINT FOR PIPE 14" AND OVER IN DIAMETER. IF FITTINGS ARE USED, CONTINUOUS STRAPPING WITH RODS, STRAPS, NUTS AND BOLTS BELOW NORMAL WATER MAIN DEPTH ARE REQUIRED, OR RETAINER GLANDS MAY BE USED IN LIEU OF STRAPPING.

STANDARD SPECIFICATIONS FOR WATER AND SEWER CONSTRUCTION IN ILLINOIS, LATEST EDITION.

41-2.01C PROTECTION OF WATER MAIN AND WATER SERVICE LINES

41-2.01A GENERAL
 Water mains and water service lines shall be protected from sanitary sewers, storm sewers, combined sewers, house sewer service connections and drains as follows:

41-2.01B HORIZONTAL SEPARATION - WATER MAINS AND SEWERS

(1) Water mains shall be located at least ten (10) feet (3.1 m) horizontally from any existing or proposed drain, storm sewer, sanitary sewer, combined sewer or sewer service connection.
 (2) Water mains may be located closer than ten (10) feet (3.1 m) to a sewer line when:
 (a) local conditions prevent a lateral separation of ten (10) feet (3.1 m); and
 (b) the water main invert is at least eighteen (18) inches (460 mm) above the crown of the sewer; and
 (c) the water main is either in a separate trench or in the same trench on an undisturbed earth shelf located to one side of the sewer.
 (3) When it is impossible to meet (1) or (2) above, both the water main and drain or sewer shall be constructed of slip-on or mechanical joint cast or ductile iron pipe, prestressed concrete pipe, or PVC pipe equivalent to water main standards of construction. The drain or sewer shall be pressure tested to the maximum expected surcharge head before backfilling. See Standard Drawing No. 18.

STANDARD SPECIFICATIONS FOR WATER AND SEWER CONSTRUCTION IN ILLINOIS, LATEST EDITION.

41-2.01C VERTICAL SEPARATION - WATER MAINS AND SEWERS

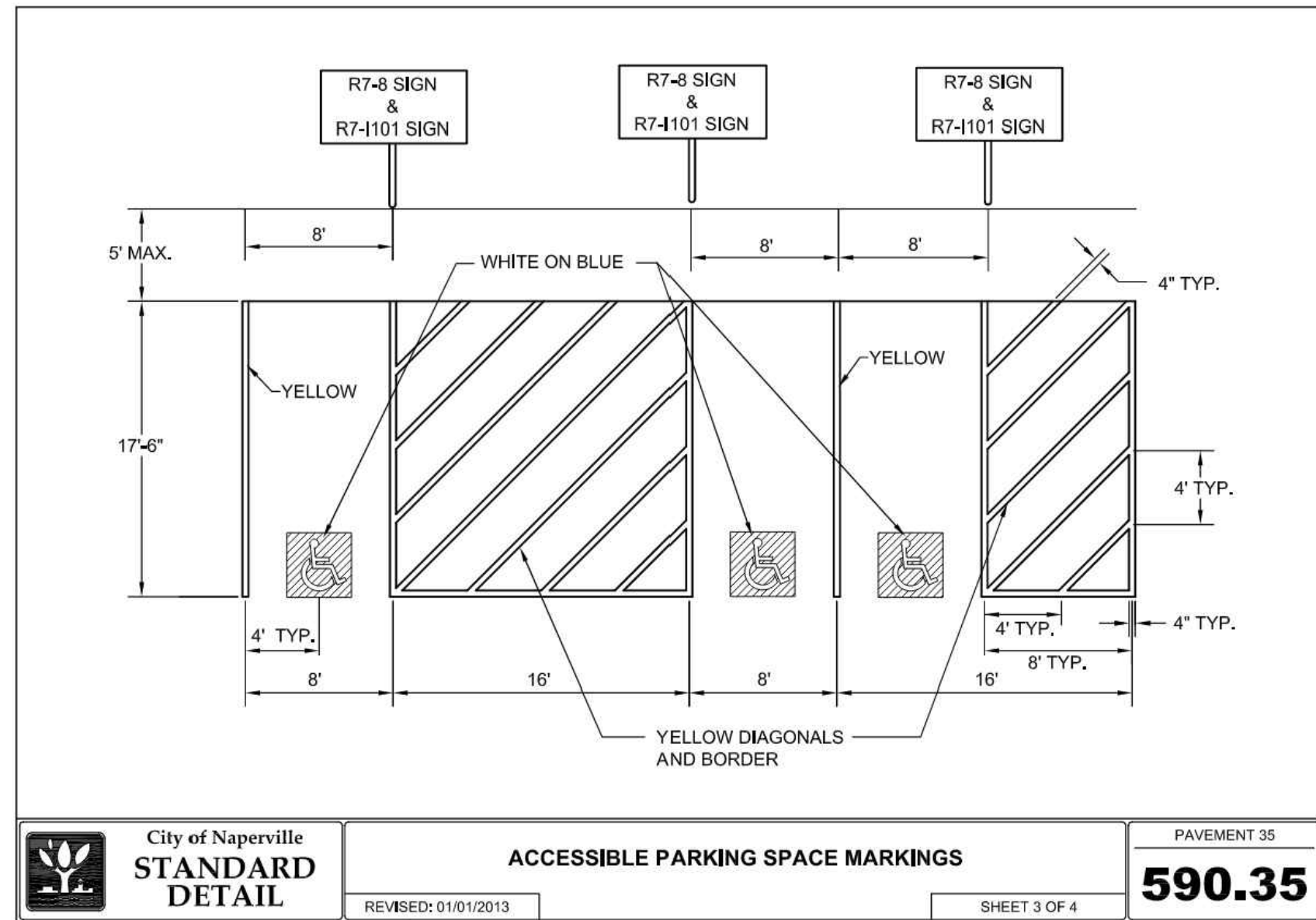
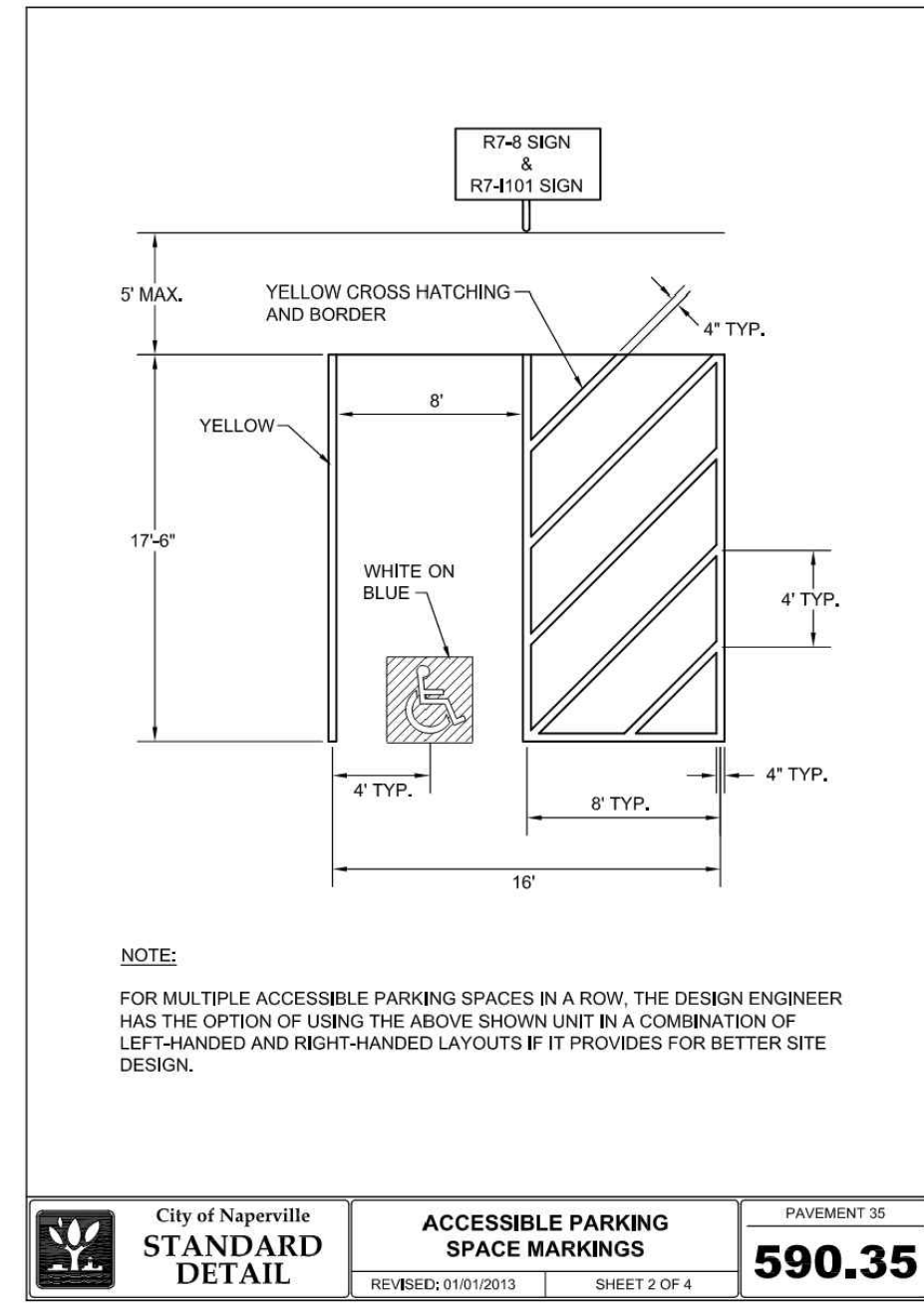
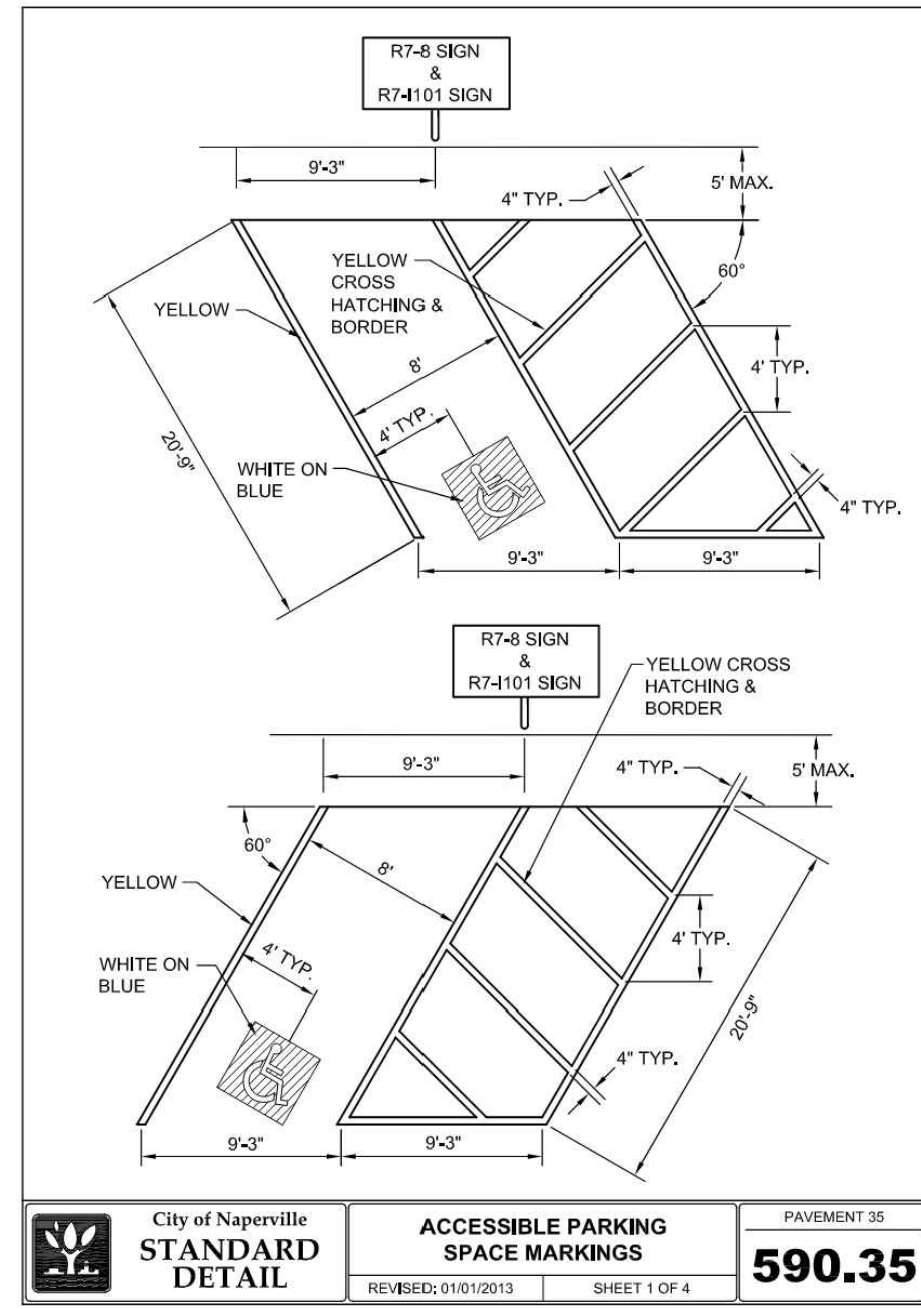
(1) A water main shall be separated from a sewer so that its invert is a minimum of eighteen (18) inches (460mm) above the crown of the drain or sewer whenever water mains cross storm sewers, sanitary sewers or sewer service connections. The vertical separation shall be maintained for that portion of the water main located within ten (10) feet (3.1m) horizontally of any sewer or drain crossed. A length of water main pipe shall be centered over the sewer to be crossed with joints equidistant from the sewer or drain.
 (2) Both the water main and sewer shall be constructed of slip-on or mechanical joint cast or ductile iron pipe, prestressed concrete pipe, or PVC pipe equivalent to water main standards of construction when:
 (a) it is impossible to obtain the proper vertical separation as described in (1) above; or
 (b) the water main passes under a sewer or drain.
 (3) A vertical separation of eighteen (18) inches (460 mm) between the invert of the sewer or drain and the crown of the water main shall be maintained where a water main crosses under a sewer. Support the sewer or drain lines to prevent setting and breaking the main, as shown on the Plans or as approved by the ENGINEER.
 (4) Construction of water main quality pipe shall extend on each side of the crossing until the perpendicular distance from the water main to the sewer or drain line is at least ten (10) feet (3.1 m) See Standard Drawings No. 19-23.

SHOULD A CONFLICT ARISE BETWEEN MANHARD DETAILS AND THE VILLAGE DETAILS, THE VILLAGE DETAILS SHALL TAKE PRECEDENCE.

MANHARD CONSULTING LTD.
 1400 W. ILLINOIS ST. SUITE 200, NAPERVILLE, ILLINOIS 60563
 TEL: 630.222.0000 FAX: 630.222.0001
 WWW.MANHARDCONSULTING.COM

PROJ. MGR.: KJC
 PROJ. ASSOC.: JRM
 DRAWN BY: JRM
 DATE: 04-21-22
 SCALE: N.T.S.
 SHEET: 11 OF 14
 NCPNV101

ISSUE FOR PERMIT - NOT FOR CONSTRUCTION



NOTES FOR ACCESSIBLE PARKING SPACES:

- EACH PARKING SPACE SHALL BE AT LEAST 16' WIDE, WITH AN 8' WIDE ACCESS AISLE.
- ADJACENT ACCESSIBLE PARKING SHALL NOT SHARE A COMMON ACCESS AISLE.
- SIGNS SHALL BE VERTICALLY MOUNTED ON A PERMANENT POST OR A WALL AT THE FRONT CENTER BETWEEN THE SPACE AND THE ACCESS AISLE NO MORE THAN 2' HORIZONTALLY FROM THE FRONT OF A PARKING SPACE AND SET A MINIMUM OF 4" FROM THE FINISHED GRADE TO THE BOTTOM OF THE "\$250 FINE" SIGN.
- ACCESSIBLE PARKING SIGNS SHALL ALSO EXHIBIT THE WORDS "3250 FINE".
- PARKING SPACES DESIGNED FOR PERSONS WITH DISABILITIES AND ACCESSIBLE PASSENGER LOADING ZONES THAT SERVE A PARTICULAR BUILDING, SHALL BE LOCATED ON THE SHORTEST POSSIBLE ACCESSIBLE CIRCULATION ROUTE TO AN ACCESSIBLE ENTRANCE OF THE BUILDING.
- IN SEPARATE PARKING STRUCTURES OR LOTS THAT DO NOT SERVE A PARTICULAR BUILDING, PARKING SPACES FOR PERSONS WITH DISABILITIES SHALL BE LOCATED ON THE SHORTEST POSSIBLE CIRCULATION ROUTE TO AN ACCESSIBLE PEDESTRIAN ENTRANCE OF THE PARKING FACILITY.

# OF ACCESSIBLE SPACES REQUIRED PER # OF OFF STREET PARKING	REQUIRED MINIMUM NUMBER OF ACCESSIBLE PARKING SPACES
1 TO 25	1
26 TO 50	2
51 TO 75	3
76 TO 100	4
101 TO 150	5
151 TO 200	6
201 TO 300	7
301 TO 400	8
401 TO 500	9
501 TO 1000	2% OF TOTAL NUMBER
OVER 1000	20 PLUS 1 FOR EACH 100 OVER 1000

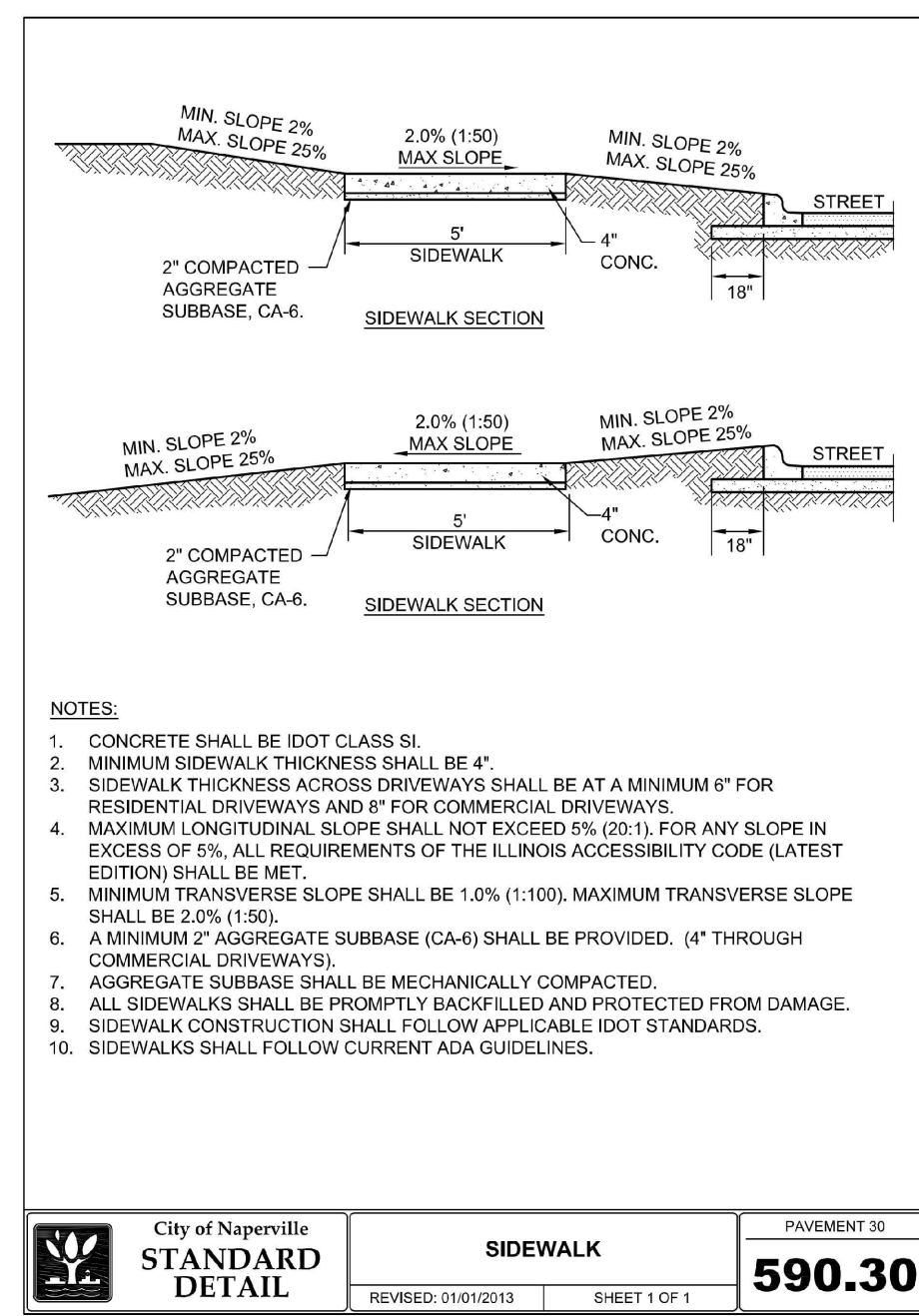
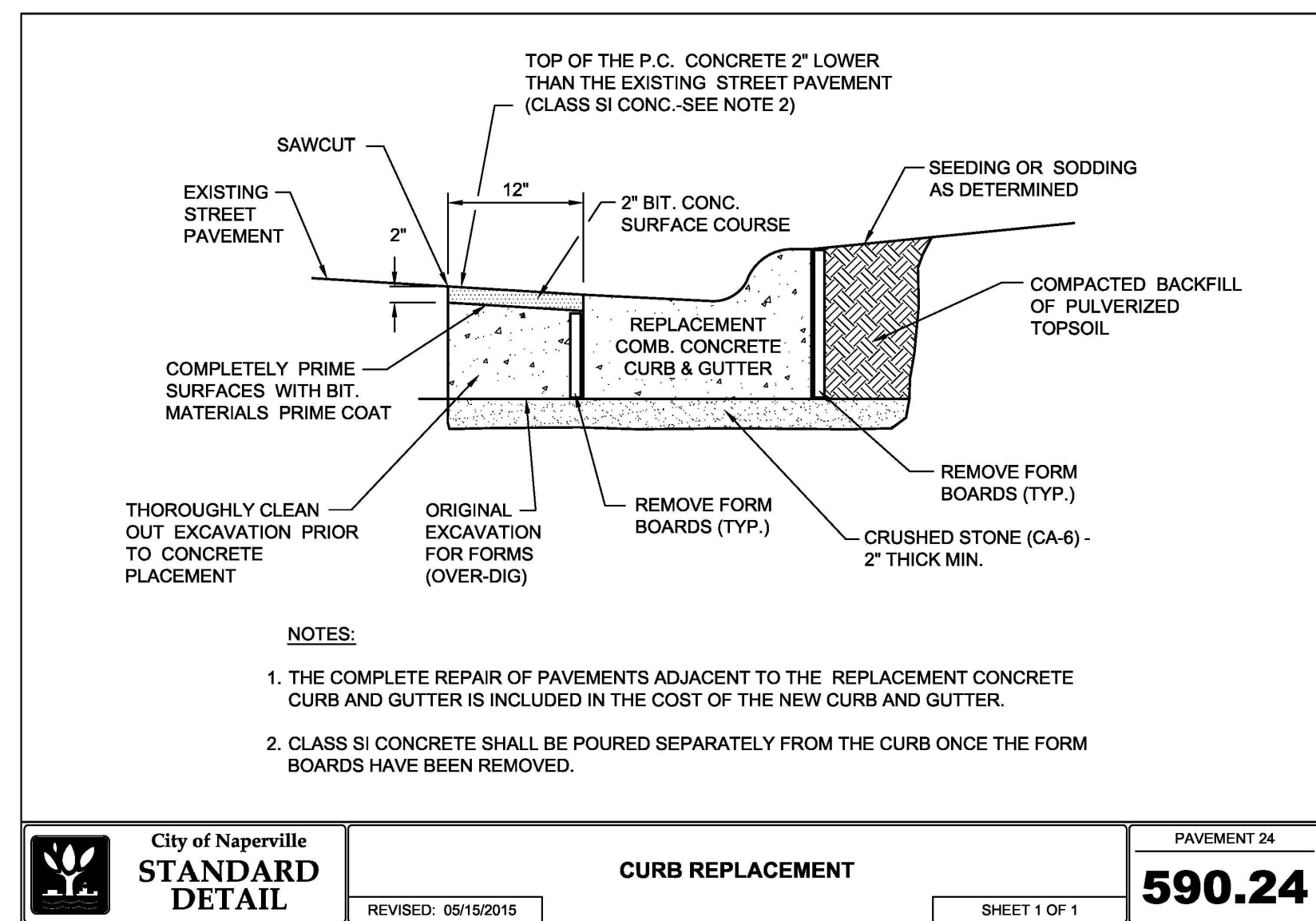
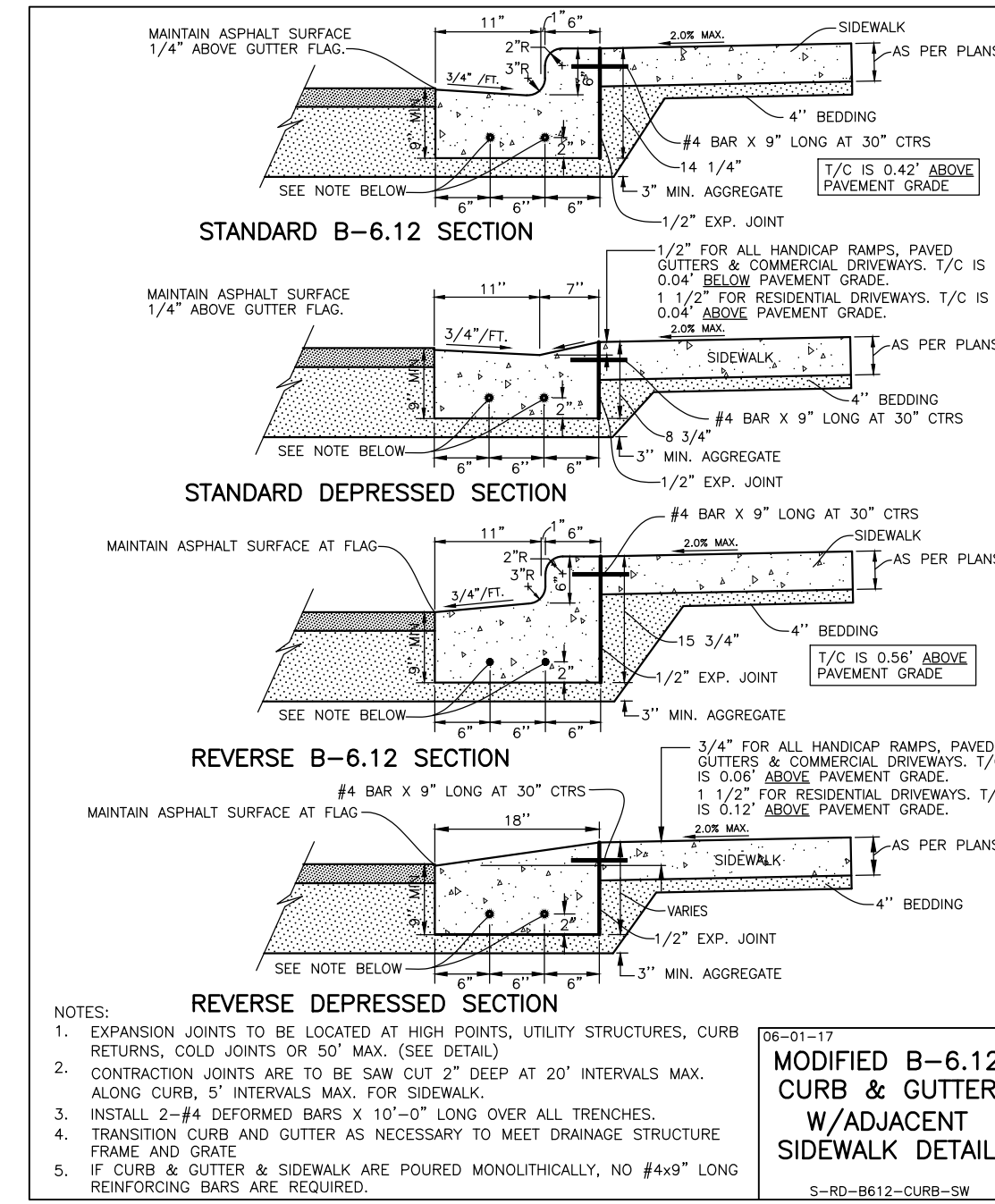
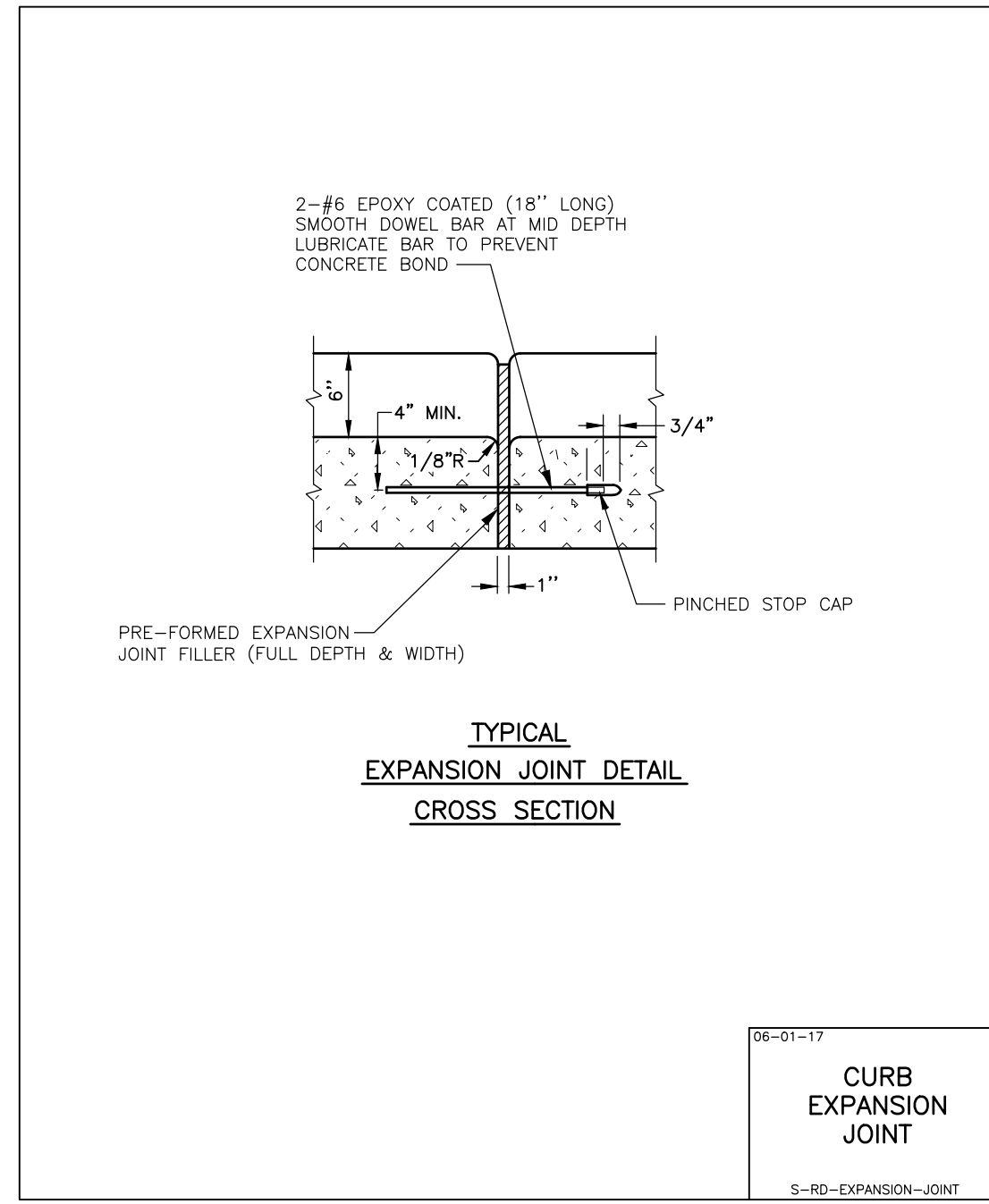
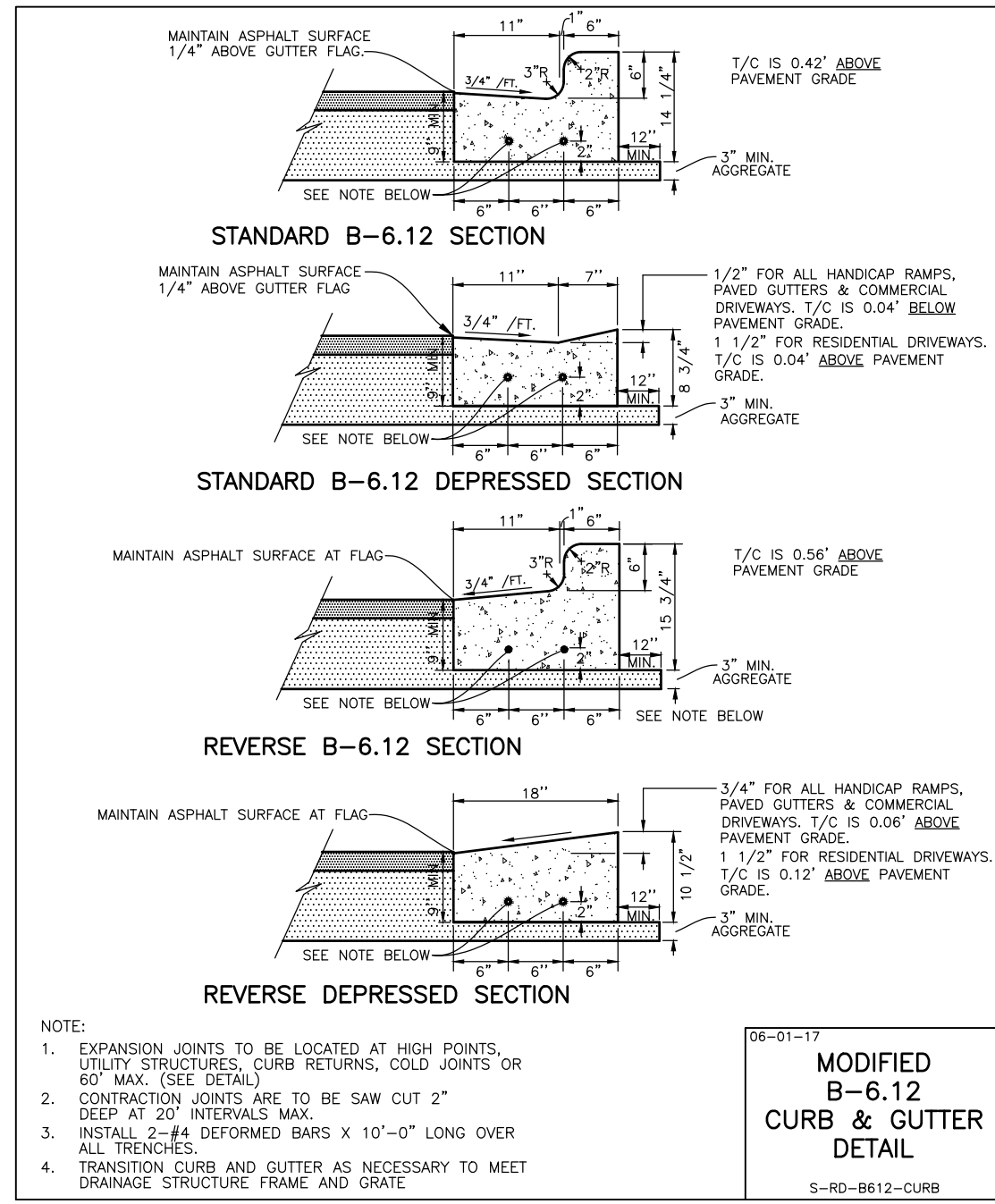
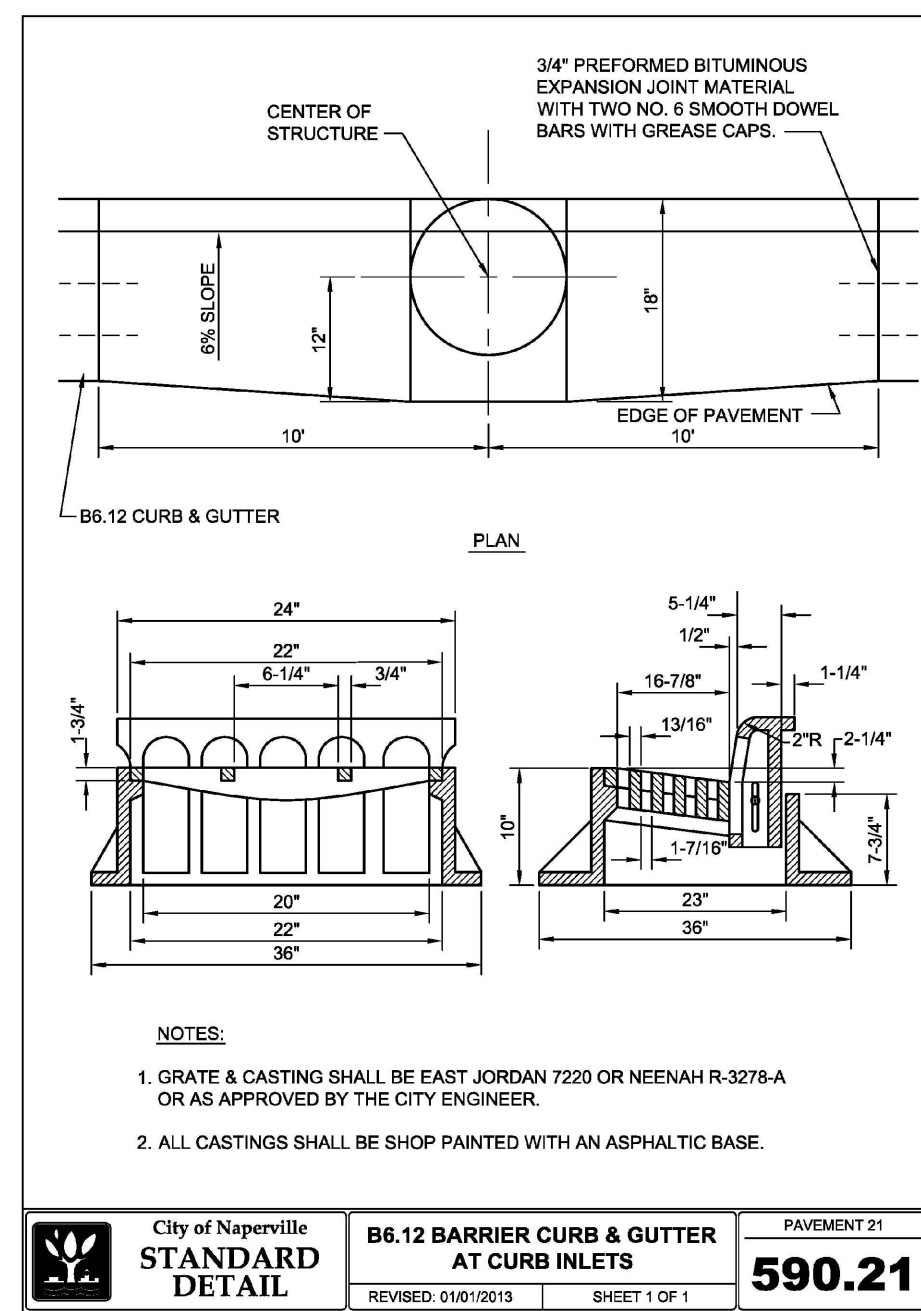
RESERVED PARKING
ACCESSIBLE PARKING SIGN (R7-8)

\$250 FINE
"\$250 FINE" SIGN (R7-4101)

VAN ACCESSIBLE
VAN ACCESSIBLE SIGN (OPTIONAL) 18" X 24"

WHITE
BLUE
4" SQUARE
2-1/2" TYP.
ACCESSIBLE SYMBOL LINES SHALL BE WHITE.

City of Naperville
STANDARD DETAIL
REVISION: 01/01/2013
SHEET 4 OF 4
590.35



SHOULD A CONFLICT ARISE BETWEEN MANHARD DETAILS AND THE VILLAGE DETAILS, THE VILLAGE DETAILS SHALL TAKE PRECEDENCE.

Manhard CONSULTING LTD.
144 West Illinois Street, Naperville, IL 60563
Civil Engineers • Surveyors • Wetland & Wetlands Engineers • Planners
Construction Managers • Environmental Scientists • Landscape Architects

EASTGATE CROSSING - COMMERCIAL OUTLOT
CITY OF NAPERVILLE, ILLINOIS
CONSTRUCTION DETAILS

PROJ. MGR.: KJC
PROJ. ASSOC.: JRM
DRAWN BY: ---
DATE: 04-21-22
SCALE: N.T.S.
SHEET
12 OF 14
NCPNV101

APR 19, 2022 - 13:28
Dwg Name: P:\NCPNV01\ManHard\Final\Drawings\Plan_Sect\Buildout_and_Culvert\Culvert\0-12-DET\MSI.dwg
Updated By: amulis

DATE: _____
REVISIONS: _____
DATE: _____
REVISIONS: _____
DATE: _____
REVISIONS: _____
DATE: _____
REVISIONS: _____
DATE: _____
REVISIONS: _____

04-21-22 REVISED PER CITY REVIEW #2
02-22-22 REVISED PER CITY REVIEW

ISSUE FOR PERMIT - NOT FOR CONSTRUCTION

