

PRE-DEVELOPMENT SITE

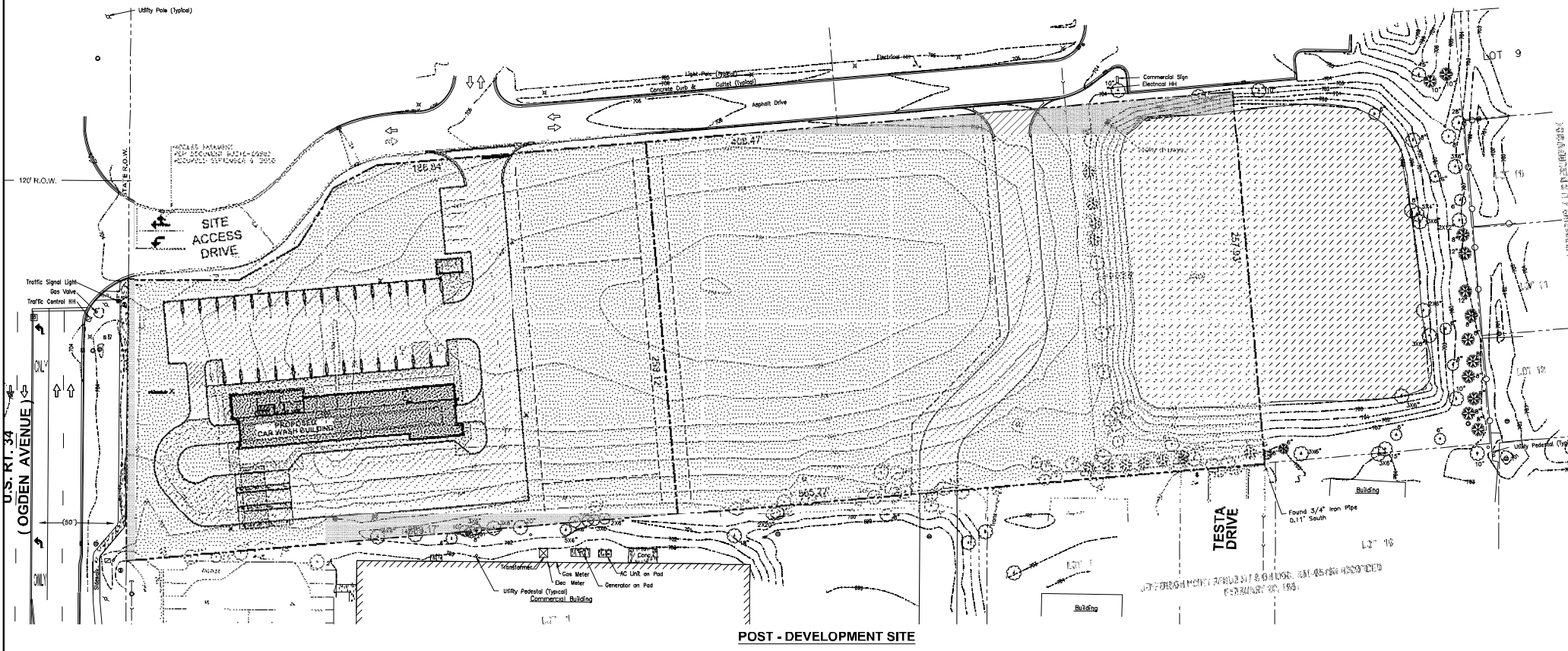
SITE DATA:

TOTAL AREA	= 4.42 AC.
IMPERVIOUS AREA	= 0.13 AC. (2.94%)
PERVIOUS AREA	= 3.92 AC. (8.37%)
POND	= 0.37 AC. (88.60%)



REVISIONS AND REVISIONS

NO.	DESCRIPTION	DATE
1	V.L.L. PRELIM. REV. #1	04/14/23
2	V.L.L. PRELIM. REV. #2	04/14/23



POST-DEVELOPMENT SITE

LOT #1:

PROPOSED IMPROVEMENTS COVERAGE - CAR WASH:

TOTAL AREA	= 2.00 AC.
IMPERVIOUS AREA	= 0.88 AC. (44.00%)
PERVIOUS AREA	= 1.12 AC. (56.00%)

LOT #2:

FUTURE IMPROVEMENTS COVERAGE (T.B.D. - BY OTHERS):

TOTAL AREA	= 2.42 AC.
IMPERVIOUS AREA	= 0.17 AC. (7.02%)
PERVIOUS AREA	= 1.88 AC. (77.69%)
EXISTING POND	= 0.37 AC. (15.29%)

LEGEND

	IMPERVIOUS
	PERVIOUS
	TRIBUTARY AREA
	OVERFLOW ROUTE
	EXISTING FLOW DIRECTION
	SUB-BASIN AREA
	IMPERVIOUS AREA
	PERVIOUS AREA
	CURVE NUMBER

PRELIMINARY ENGINEERING

FOR

CAR WASH FACILITY

1492 W. OGDEN AVE.
NAPERVILLE, IL 60540

DESIGNED BY: M.S.L.

DRAWN BY: M.S.L.

DATE: 08/08/2023

PROJECT #: 1621

DRAINAGE EXHIBIT

SHEET NUMBER

C-10