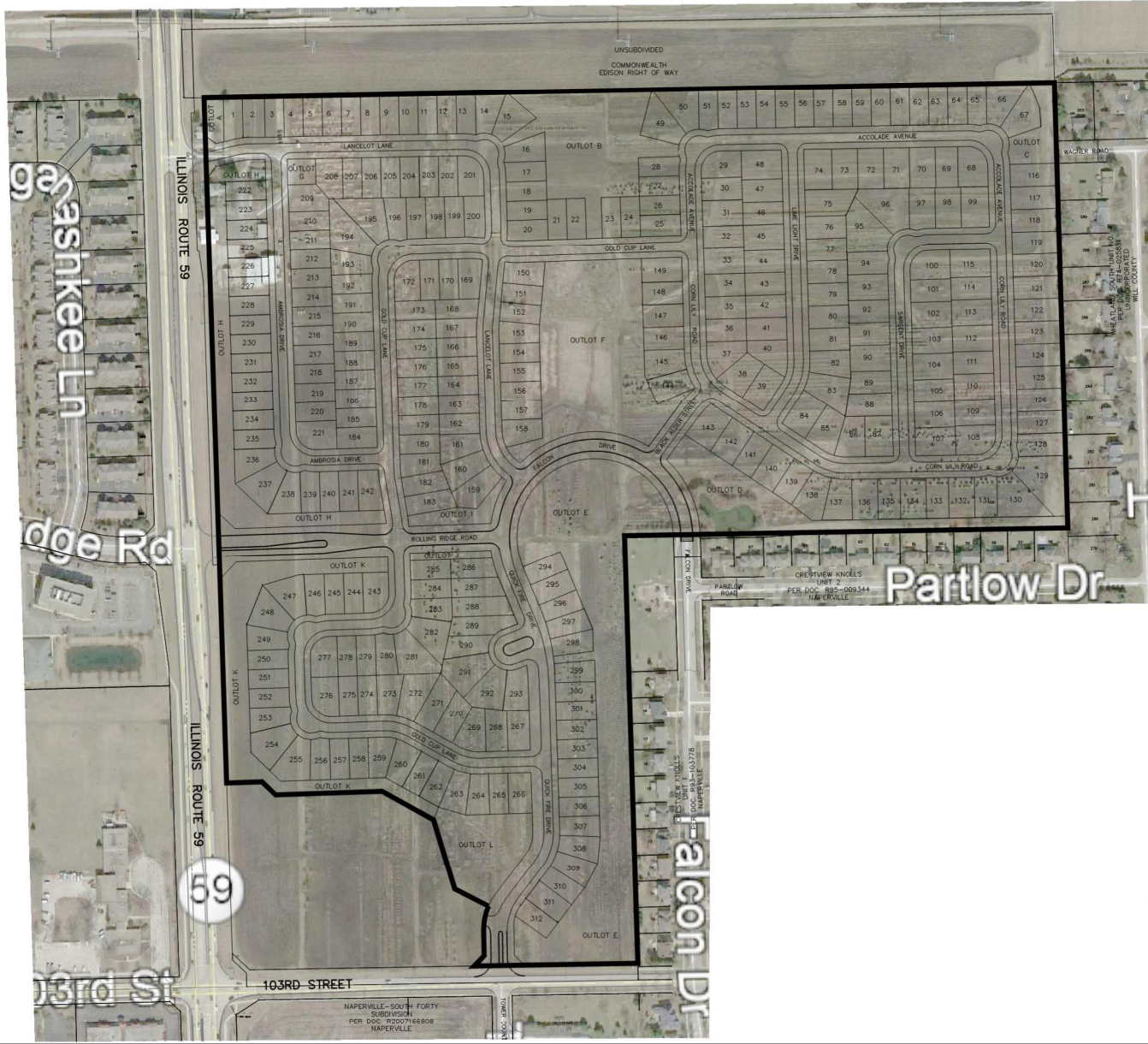


# WAGNER FARMS BOUNDARY FOR SSA No. \_\_\_



PREPARED FOR:  
**PULTE HOME COMPANY, LLC**  
 1900 E. GOLF ROAD, SUITE 300  
 SCHAUMBURG, IL 60173  
 (847) 230-5400

PREPARED BY:  

**CEMCON, Ltd.**  
 Consulting Engineers, Land Surveyors & Planners  
 2280 White Oak Circle, Suite 100  
 Aurora, Illinois 60502-9675  
 PH: 630.862.2100 FAX: 630.862.2199  
 E-Mail: cadd@cemcon.com Website: www.cemcon.com  
 DISC NO.: 402109 FILE NAME: SSA EXHIBIT BNDRY  
 DRAWN BY: LAL FLD. BK. / PC. NO.: ---  
 COMPLETION DATE: 10-29-19 JOB NO.: 402.109  
 REVISED: 11-05-19/LAL

Copyright © 2019 Cemcon, Ltd. All rights reserved.

**EXHIBIT C**