

# THE PROSPERITA & ORION STEM SCHOOL

Naperville, Illinois

## PRELIMINARY LANDSCAPE IMPROVEMENT PLANS

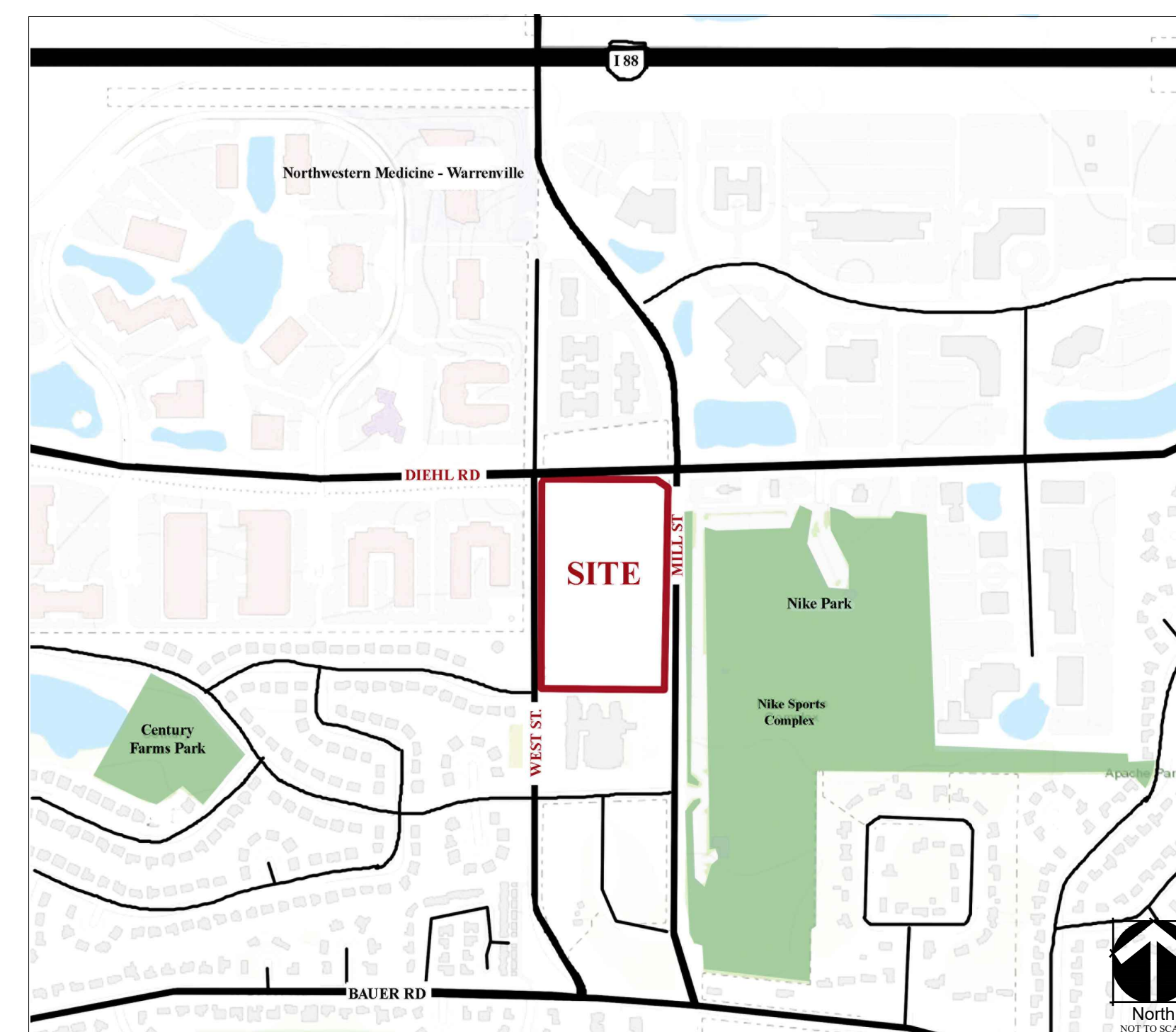
PREPARED BY:



Schoppe Design Associates, Inc.  
LAND PLANNING & LANDSCAPE ARCHITECTURE

126 S. Main Street  
Oswego, IL 60543  
p: 630 551-3355  
f: 630 551-3639  
schoppedesign.net

### LOCATION MAP



PREPARED FOR:

**VRUTTHI, LLC**

3644 White Eagle Dr.  
Naperville, IL 60560

### SHEET INDEX

1. COVER SHEET
2. OVERALL PRELIMINARY LANDSCAPE PLAN
3. ORION STEM SCHOOL PRELIMINARY LANDSCAPE PLAN
4. THE PROSPERITA PRELIMINARY LANDSCAPE PLAN
5. DETAILS & SPECIFICATIONS

### GENERAL NOTES

1. Contractor and or sub-contractors shall verify locations of all underground utilities prior to digging. Contact J.U.L.I.E. (Joint Utility Locating for Excavators) at 1-800-892-0123 or dial 811.
2. Topographic & boundary information obtained from Preliminary Site Development Plan for The Prosperita and Orion Stem School prepared by Cemcon Ltd. dated 02/09/23.
3. Verify site conditions and information on drawings prior to commencement of work. Promptly report any concealed conditions, mistakes, discrepancies, or deviations from the information shown in the Contract Documents. The Owner is not responsible for unauthorized changes or extra work required to correct unreported discrepancies.
4. Secure and pay for permits, fees and inspections necessary for the proper execution of this work. Comply with codes applicable to this work.
5. Plants and other materials are quantified and summarized for the convenience of the Owner and jurisdictional agencies. Confirm and install sufficient quantities to complete the work as drawn. No additional payments will be made for materials required to complete the work as drawn.
6. Refer to the specifications for additional conditions, standards and notes.
7. Final locations of trees within rights-of-ways are subject to change based on the final driveway and utility locations.
8. Electric meters shall have a minimum of four feet (4') clear to the front and two feet (2') clear to each side. Transformer pads shall have a minimum five foot (5') clearance from all sides and ten feet (10') from the front. Trees shall be separated from electric facilities by a minimum of five feet (5').
9. Trees shall be set back a minimum of ten feet (10') horizontally from utility structures, including, but not limited to, manholes, valve vaults, valve boxes, fire hydrants, transformers and switch cans. Trees shall be set back a minimum of five feet (5') horizontally from storm sewer lines, sanitary sewer lines, and water mains in addition to storm sewer, sanitary sewer and water services. Contractor to make necessary adjustments under the approval of owner. Refer to civil drawings prepared by others.
10. The number, location and species of the parkway trees to be planted along West Street, Diehl Road and Mill Street shall be determined by the City at the time of building permit application for said lot(s) based on the provisions of Section 5-10-3:3 of Naperville Municipal Code.

### UTILITY LOCATION NOTICE



Know what's below.  
Call before you dig.

Contractor and or sub-contractors shall verify locations of all underground utilities prior to digging. Contact J.U.L.I.E. (Joint Utility Locating for Excavators) at 1-800-892-0123 or dial 811.

### REVISION HISTORY

REV.	DATE	SHEET NUMBER	PURPOSE
8	.	.	.
7	.	.	.
6	.	.	.
5	.	.	.
4	.	.	.
3	.	.	.
2	2023-02-13	ALL	ISSUED IN RESPONSE TO CITY & COUNTY COMMENTS
1	2022-12-16	ALL	ISSUED IN RESPONSE TO 10/31/22 CITY COMMENTS
0	2022-10-05	ALL	ISSUED FOR CLIENT REVIEW

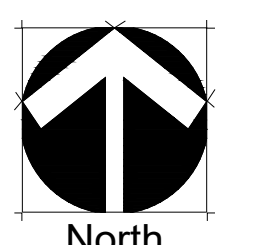
Naperville Project Number 22-1-097

Prepared By:  
**sda**  
Schoppe Design Associates, Inc.  
LAND PLANNING & LANDSCAPE ARCHITECTURE  
schoppedesign.net

Prepared For:  
**VRUTTHI, LLC**  
3644 WHITE EAGLE DR  
NAPERVILLE, IL 60560

Project Name:  
**THE PROSPERITA &  
ORION STEM SCHOOL**  
Naperville, Illinois

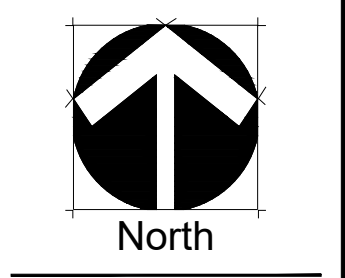
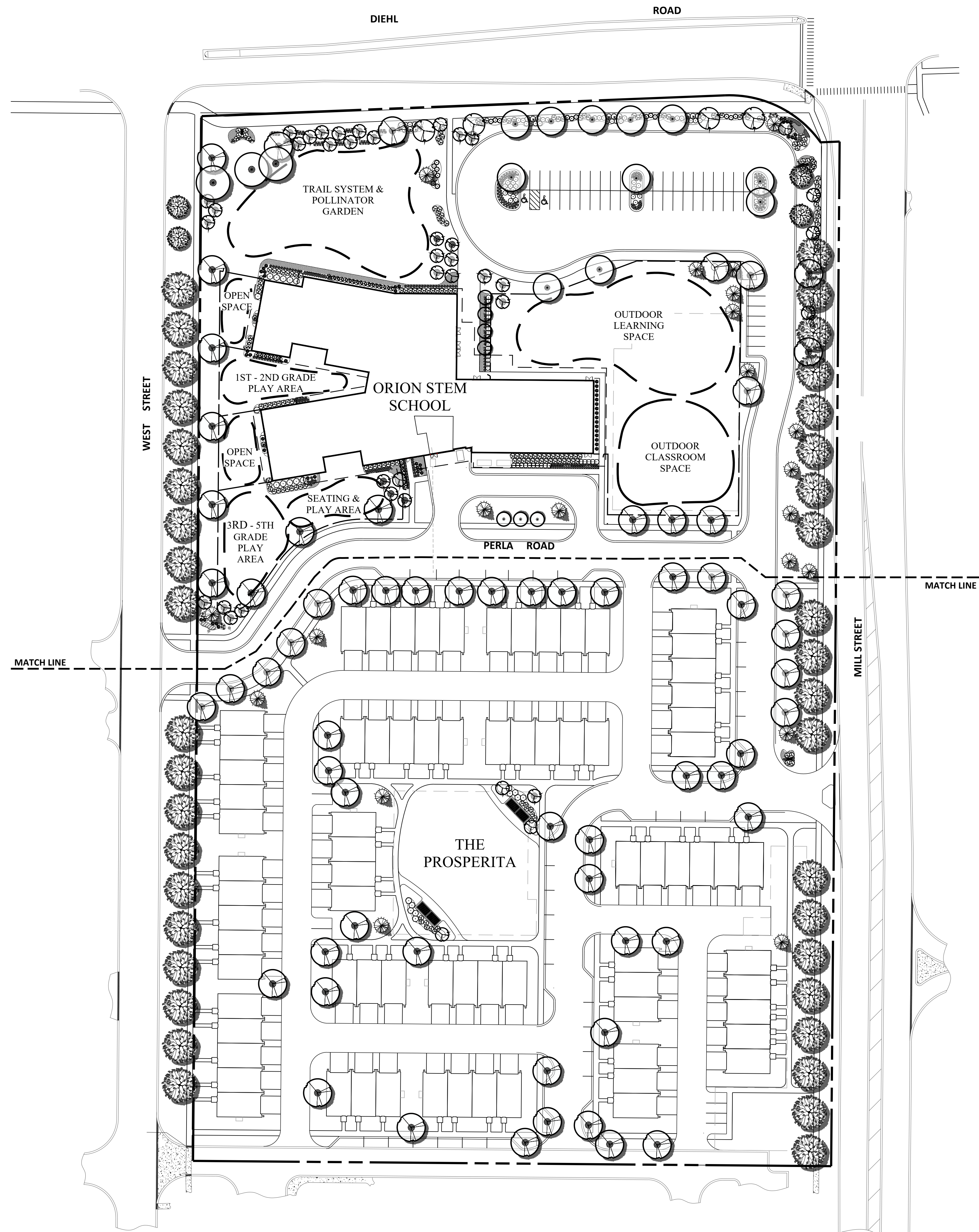
Sheet Name:  
**PRELIMINARY  
LANDSCAPE PLAN**  
COVER SHEET



Revisions

2023-02-13 Response to City & County comments  
2022-12-16 Response to City comments  
Date: 2022-10-05  
Scale:  
Job #: 396.001.03  
Drawn:  
File #  
SHEET:

**1**



Revisions

NO.	DATE	DESCRIPTION

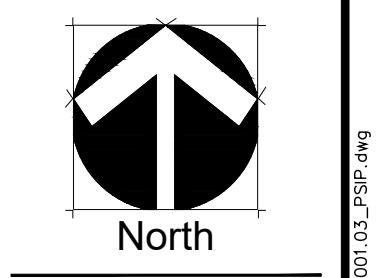
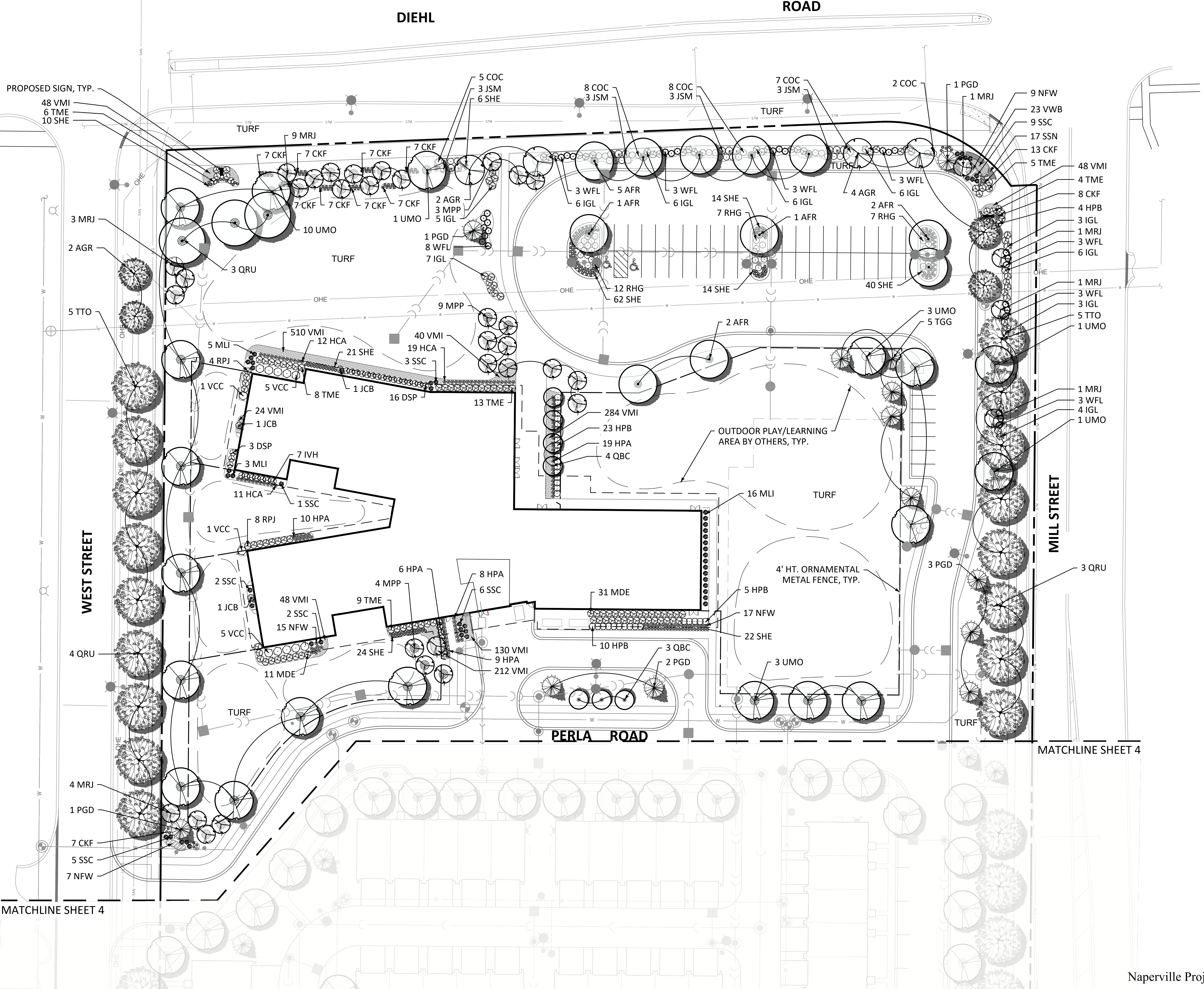
2023-02-13 Response to City & County comments  
 2022-12-16 Response to City comments

Date: 2022-10-05  
 Scale: 1"= 50'  
 Job #: 396.001.03  
 Drawn: IL / MW  
 File #: 396.001.03 PSIP

PROPOSED SIGN, TYP.  
48 VMI  
6 TME  
10 SHE

MATCHLINE SHEET 4

MATCHLINE SHEET 4

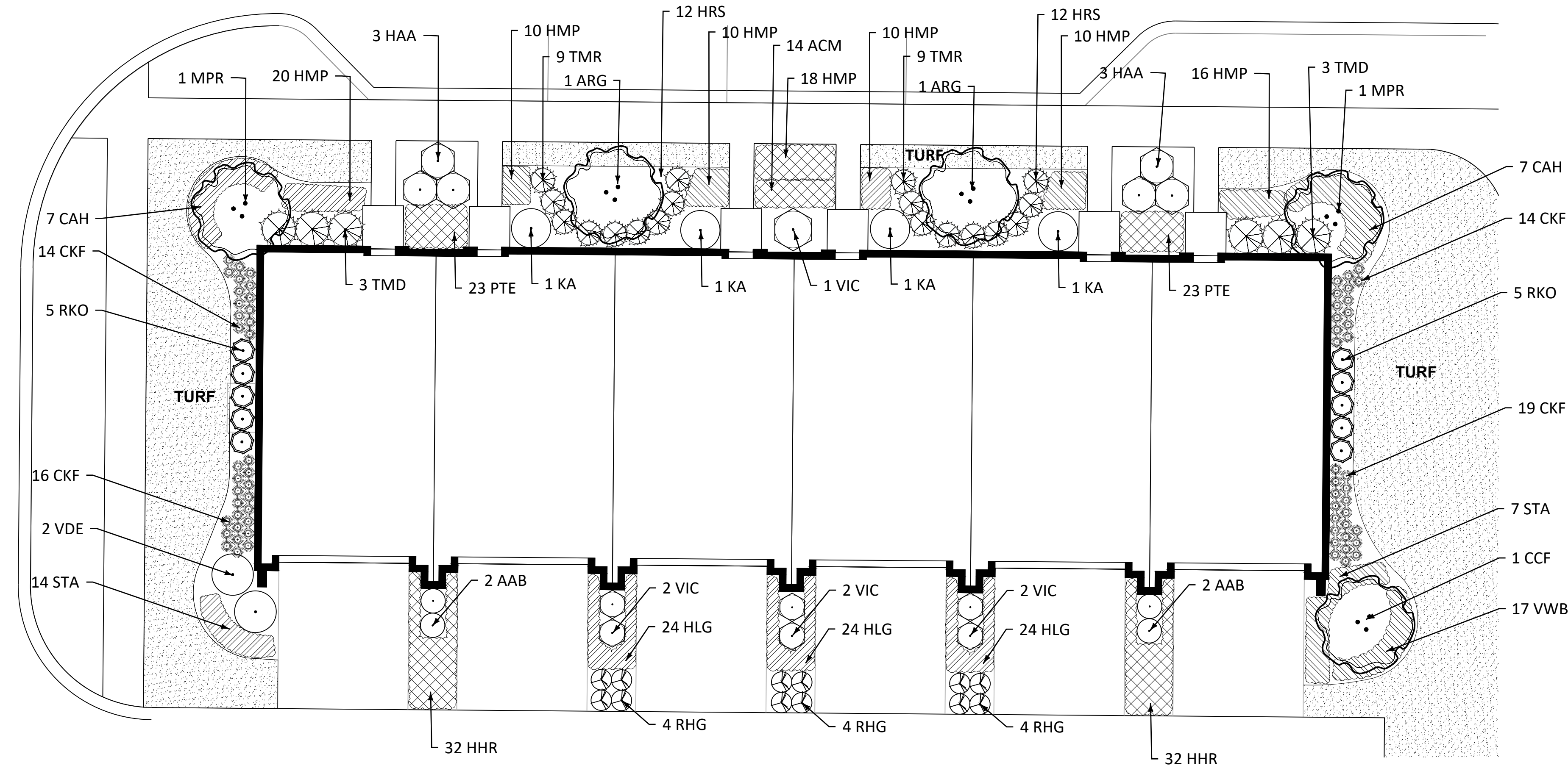


Revisions

NO.	DATE	DESCRIPTION

2023-02-13 Response to City & County comments  
2022-12-16 Response to City comments  
Date: 2022-10-05  
Scale: 1" = 30'  
Job #: 396.001.03  
Drawn: MW  
File #: 396.001.03 PSIP





MATERIALS LIST (TOWNHOME PROTOTYPE ONLY)

Code	Botanical Name	Common Name	Qty.	Unit	Size
<b>Understory Trees</b> 5					
AGR	Amelanchier grandifolia 'Autumn Brilliance'	Autumn Brilliance Serviceberry	2	Each	6' Hgt.
CCF	Cercis canadensis 'Forest Pansy'	Forest Pansy Redbud	1	Each	6' Hgt.
MPR	Malus 'Prairefire'	Prairefire Crabapple	2	Each	6' Hgt.
<b>Deciduous Shrubs</b> 55					
AAB	Aronia arbutifolia 'Brilliantissima'	Red Chokeberry	4	Each	36" Hgt.
CAH	Clethra alnifolia 'Hummingbird'	Summersweet Clethra	14	Each	24" Hgt.
HAA	Hydrangea arborescens 'Annabelle'	Annabelle Hydrangea	6	Each	24" Hgt.
RHG	Rhus aromatica 'Gro-Low'	Gro-Low Sumac	12	Each	18" Hgt.
RKO	Rosa 'Knock Out'	Knock Out Rose	10	Each	24" Hgt.
VDE	Viburnum dentatum	Arrowwood Viburnum	2	Each	36" Hgt.
VIC	Viburnum carlesii 'Aurora'	Korean Spice Viburnum	7	Each	36" Hgt.
<b>Evergreen Shrubs</b> 28					
KA	Rhododendron 'Karen'	Karen Azalea	4	Each	24" Hgt.
TMD	Taxus media 'Densiflora'	Dense Yew	6	Each	24" Hgt.
TMR	Taxus x media 'Runyan'	Runyan Anglojap Yew	18	Each	18" Hgt.
<b>Perennials, Ornamental Grasses and Groundcovers</b> 415					
ACM	Astilbe chinensis 'Maggie Daley'	Maggie Daley Astilbe	14	Each	1 Gal.
CKF	Calamagrostis a. 'Karl Foerster'	Feather Reed Grass	63	Each	1 Gal.
HRH	Hemerocallis 'Happy Returns'	Happy Returns Daylily	64	Each	1 Gal.
HLG	Hemerocallis 'Little Grapette'	Little Grapette Daylily	72	Each	1 Gal.
HMP	Heuchera micrantha 'Palace Purple'	Purple Palace Coral Bells	94	Each	1 Gal.
HRS	Hosta 'Royal Standard'	Royal Standard Hosta	24	Each	1 Gal.
PTE	Pachysandra terminalis	Pachysandra	46	Each	24/Flat
STA	Sedum spectabile 'Autumn Joy'	Autumn Joy Sedum	21	Each	1 Gal.
VVB	Veronica 'Waterperry Blue'	Waterperry Blue Speedwell	17	Each	1 Gal.

MATERIALS LIST

Code	Botanical Name	Common Name	Qty.	Unit	Size
<b>Street Trees (Canopy)</b> 124					
AFR	Acer x freemanii 'Armstrong Gold'	Armstrong Gold Maple	17	Each	2.5 Cal.
GTI	Gleditsia tricanthos v. inermis 'Skyline'	Skyline Honeylocust	19	Each	2.5 Cal.
QBC	Quercus x bimundorum 'Crimschmidt'	Crimson Spire Oak	7	Each	2.5 Cal.
QRU	Quercus rubra	Northern Red Oak	26	Each	2.5 Cal.
TTO	Tilia tomentosa	Silver Linden	30	Each	2.5 Cal.
UMO	Ulmus 'Morton' Accolade	Accolade Elm	25	Each	2.5 Cal.

<b>Evergreen Trees</b> 21					
PGD	Picea glauca v. densata	Black Hills Spruce	11	Each	6' Hgt.
TGG	Thuja 'Green Giant'	Green Giant Arborvitae	10	Each	6' Hgt.

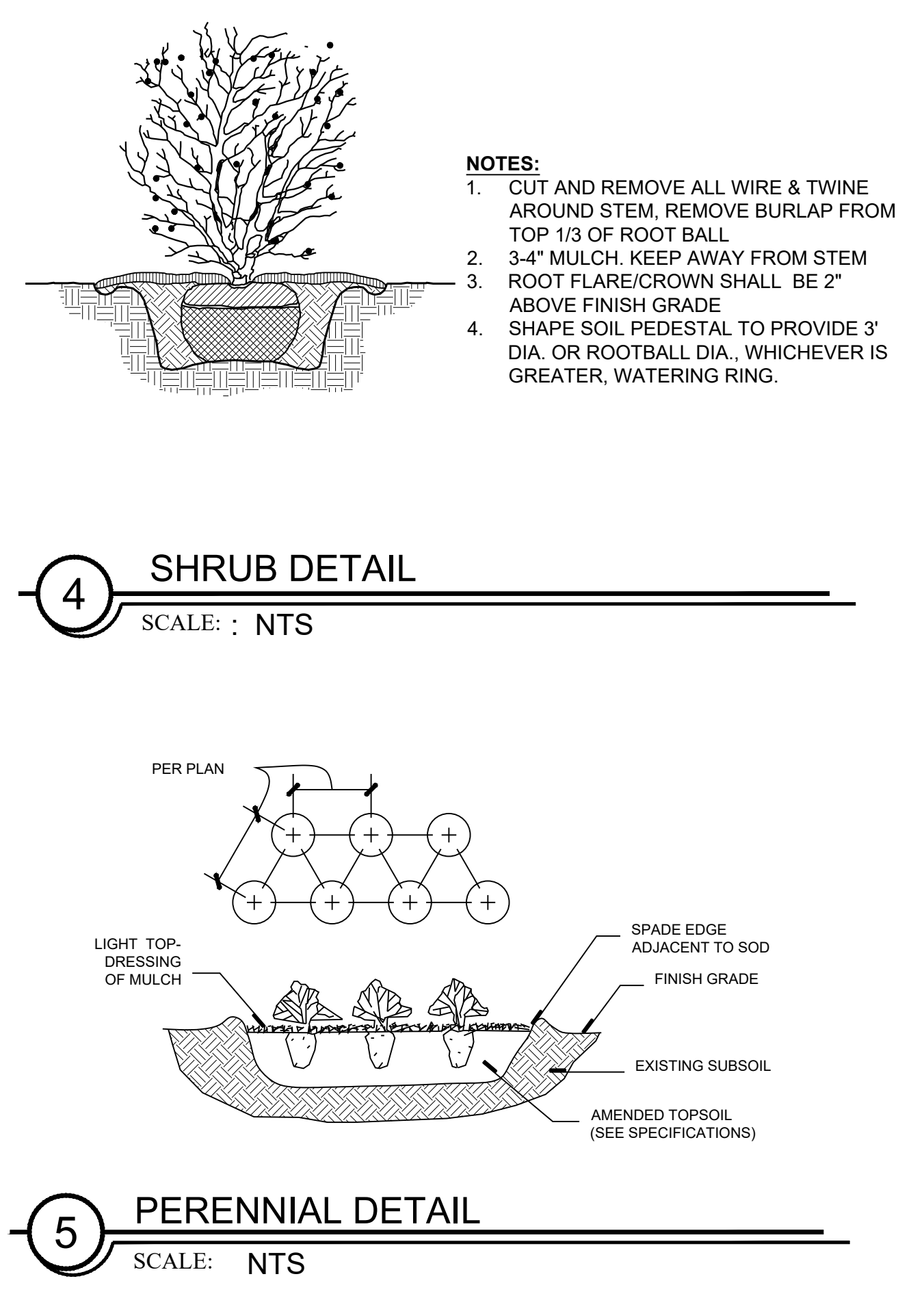
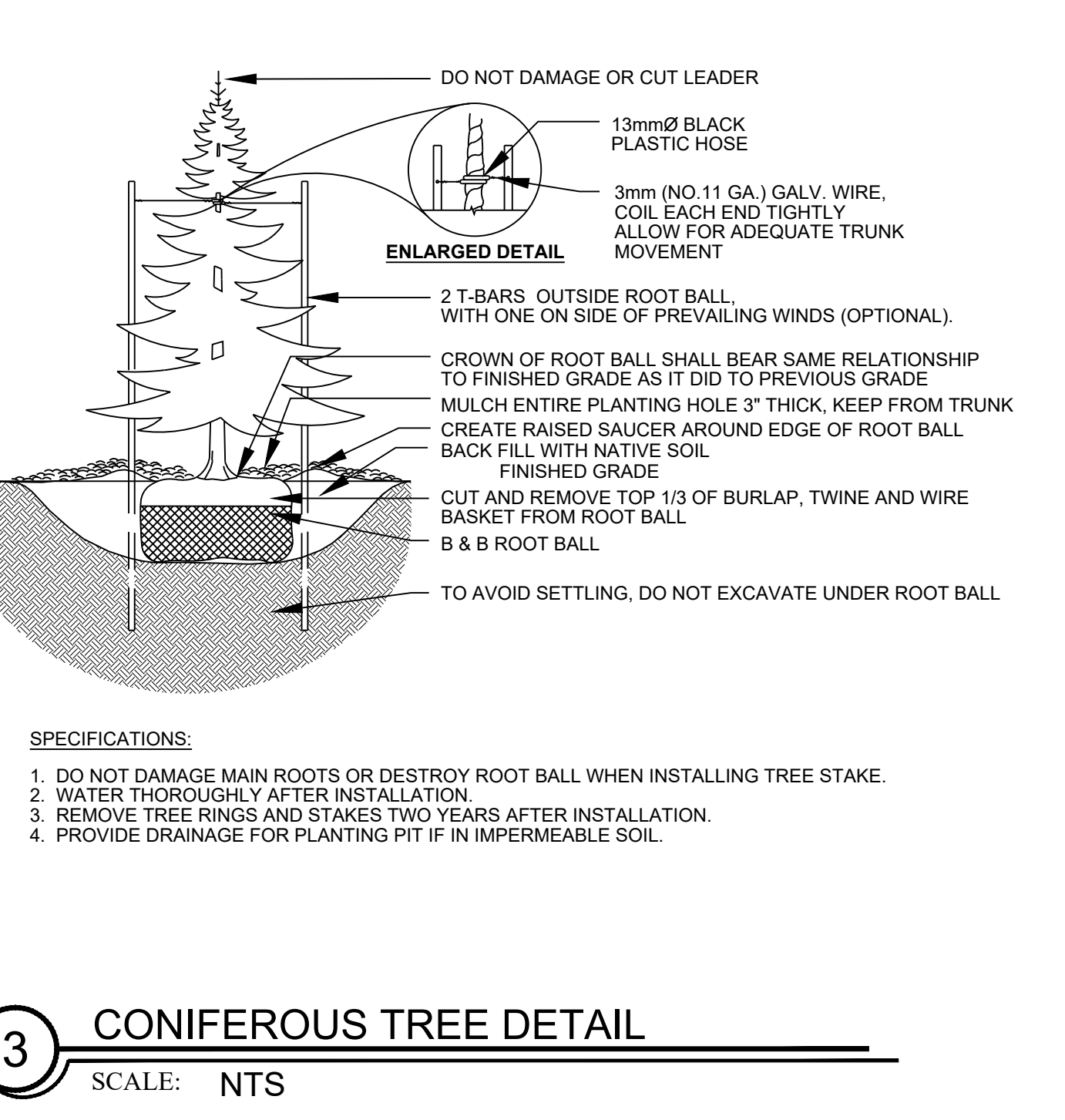
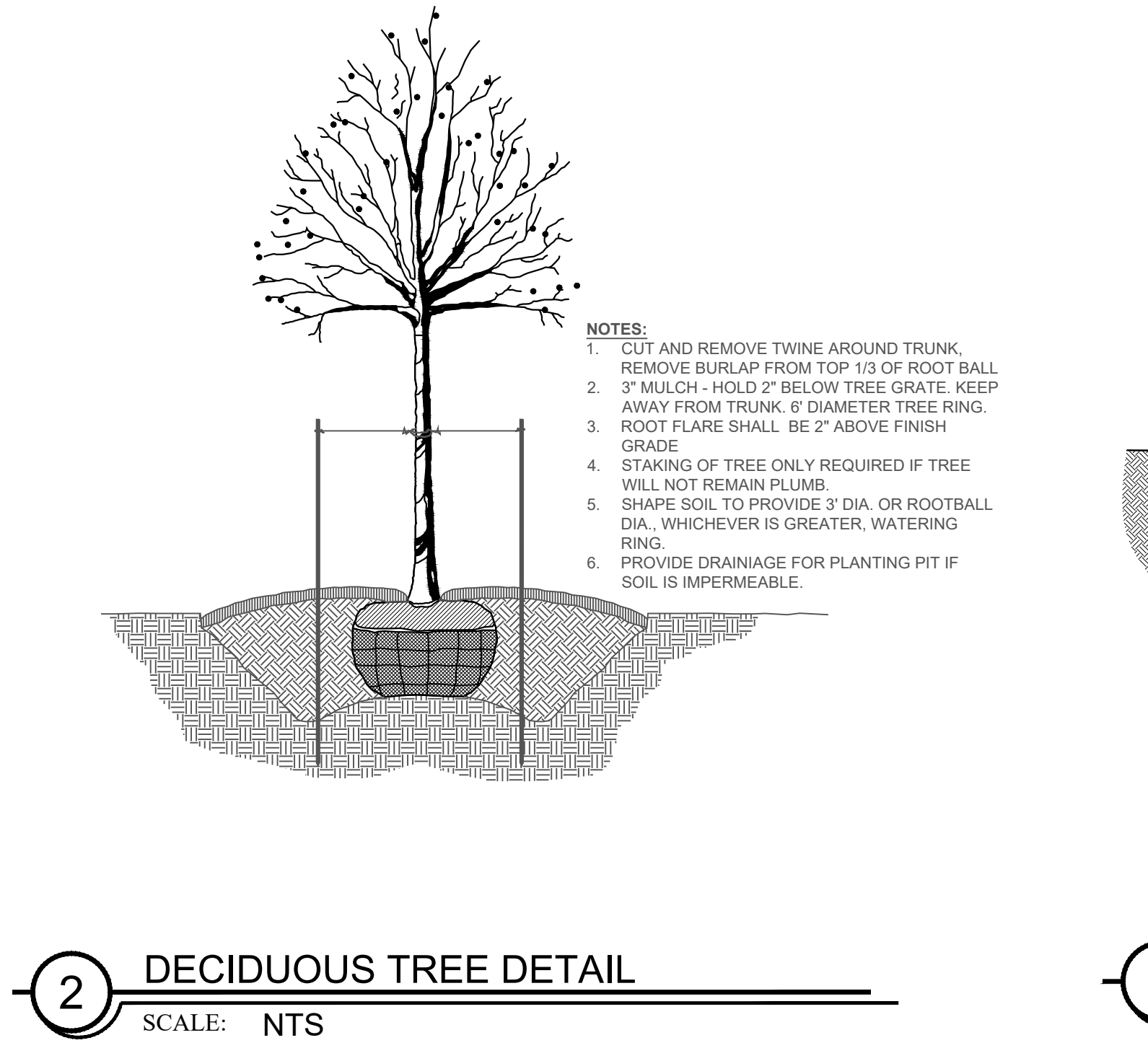
<b>Understory Trees</b> 48					
AGR	Amelanchier grandifolia 'Autumn Brilliance'	Autumn Brilliance Serviceberry	8	Each	6' Hgt.
CCA	Cercis canadensis	Eastern Redbud	4	Each	6' Hgt.
MPP	Malus 'Purple Prince'	Purple Prince Crabapple	16	Each	6' Hgt.
MRJ	Malus 'Red Jewel'	Red Jewel Crabapple	20	Each	6' Hgt.

<b>Deciduous Shrubs</b> 145					
DSP	Dienella splendens 'El Madrigal'	Nightglow Bush Honeysuckle	19	Each	24" Hgt.
HPB	Hydrangea paniculata 'Bobo'	Bobo Hydrangea	42	Each	18" Hgt.
IVH	Itea virginica 'Henry's Gamet'	Henry's Gamet Virginia Sweetspire	7	Each	24" Hgt.
RHG	Rhus aromatica 'Gro-Low'	Gro-Low Sumac	26	Each	18" Hgt.
VCC	Viburnum carlesii 'Compactum'	Koreanspice Viburnum	12	Each	36" Hgt.
WFL	Weigela florida 'Bokrasopin'	Sonic Bloom Pink Weigela	39	Each	30" Hgt.

<b>Evergreen Shrubs</b> 178					
IGL	Ilex glabra 'Shamrock'	Shamrock Inkberry	66	Each	30" Hgt.
JCB	Juniperus chinensis 'Blue Point'	Blue Point Juniper	3	Each	5' Hgt.
JSM	Juniperus sabina 'Monard'	Moor-Dense Juniper	12	Each	12" Hgt.
MDE	Microbiota decussata 'Celtic Pride'	Celtic Pride Siberian Cypress	42	Each	18" Hgt.
RPJ	Rhododendron x P.J.M.	P.J.M. Rhododendron	12	Each	24" Hgt.
TME	Taxus x media 'Everlow'	Everlow Yew	43	Each	18" Hgt.

<b>Perennials, Ornamental Grasses and Groundcovers</b> 508					
CKF	Calamagrostis a. 'Karl Foerster'	Feather Reed Grass	44	Each	1 Gal.
HCA	Heuchera 'Carmel'	Carmel Alumroot	42	Each	1 Gal.
HPA	Hosta 'Patriot'	Patriot Hosta	52	Each	1 Gal.
MLI	Miscanthus sinensis 'Morning Light'	Morning Light Silver Maiden Grass	8	Each	1 Gal.
NFW	Nepeta faassenii	Walker's Low Catmint	41	Each	1 Gal.
SHE	Sporobolus heterolepis	Prairie Dropseed	197	Each	1 Gal.
SSC	Schizachyrium scoparium 'Prairie Blues'	Prairie Blues Little Bluestem	28	Each	1 Gal.
SSN	Sedum spectabile 'Neon'	Neon Sedum	17	Each	1 Gal.
VMI	Vinca minor	Periwinkle	56	Each	24/Flat

1 TOWNHOME PLANTING PROTOTYPE DETAIL PLAN  
SCALE: 1" = 10'



5 PERENNIAL DETAIL  
SCALE: NTS

Prepared By: **sda** Schoppe Design Associates, Inc. LAND PLANNING & LANDSCAPE ARCHITECTURE  
126 S. Main Street, Oswego, IL 60543, f: 630.551.5639, schoppeesign.net

Prepared For: **VRUTTHI, LLC** 3644 WHITE EAGLE DR, NAPERVILLE, IL 60560

Project Name: **THE PROSPERITA & ORION STEM SCHOOL** Naperville, Illinois

Sheet Name: **PRELIMINARY LANDSCAPE PLAN** DETAILS & SPECIFICATIONS

North

Revisions

Date: 2022-02-13 Response to City & County comments  
2022-12-16 Response to City comments  
Date: 2022-10-05  
Scale:  
Job #: 396.001.03  
Drawn: IL / CK  
File #  
SHEET: **5**

Naperville Project Number 22-1-097