



Design #	
0423994Ar1	
Sheet 1 of 10	
Client	
SEVEN BREW COFFEE	
Address	
1200 E Ogden Ave. Naperville, IL 60563	
Account Rep.	WF
Designer	RMS
Date	1/12/24
Approval / Date	
Client	
Sales	
Estimating	
Art	
Engineering	
Landlord	

Revision / Date	
R1-AC-1/17/24: rev F	

SEVEN BREW DRIVE THRU COFFEE
1200 East Ogden Ave.
Naperville, IL
WO# 0423994a

 **CHANDLER SIGNS**
 14201 Sovereign Road #101
 Fort Worth, TX 76155
 (214) 902-2000 Fax (214) 902-2044

 CHANDLER SIGNS	
chandlersigns.com	
National Headquarters	14201 Sovereign Road #101 Fort Worth, TX 76155 (214) 902-2000 Fax (214) 902-2044
San Antonio	17319 San Pedro Avenue Suite 200 San Antonio, TX 78232 (210) 349-3804 Fax (210) 349-8724
Northeast US	2301 River Road, Suite 201 Louisville, KY 40206 (502) 897-9800 Cell (502) 554-2575
Georgia	111 Woodstone Place Dawsonville, GA 30534 (678) 725-8852 Fax (210) 349-8724
South Texas	PO BOX 125 206 Daral Drive Portland, TX 78374 (361) 563-5599 Fax (361) 643-6533

This drawing is the property of Chandler Signs, LLC. All rights to its use for reproduction are reserved by Chandler Signs, LLC.

FINAL ELECTRICAL CONNECTION BY CUSTOMER

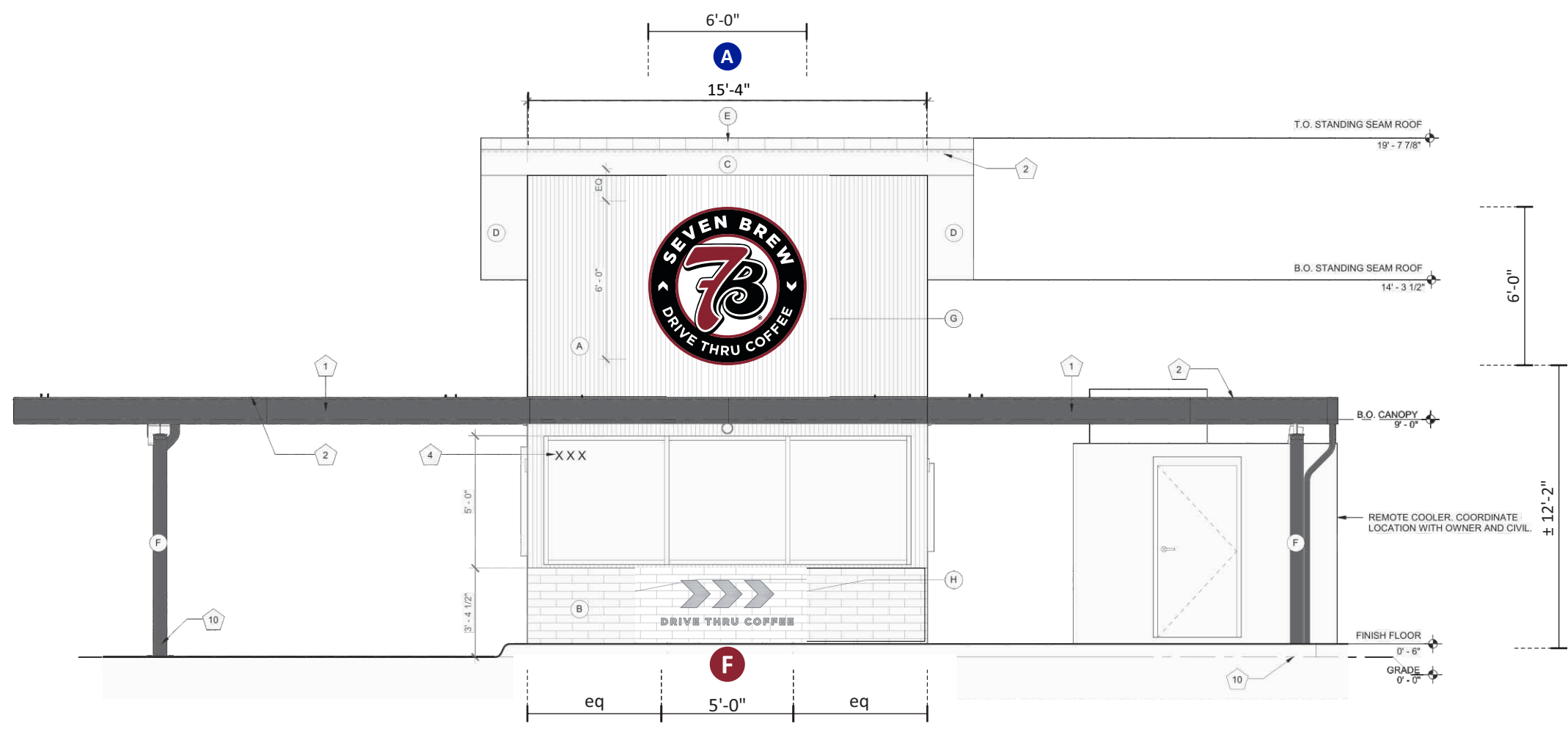
THIS SIGN IS INTENDED TO BE INSTALLED IN ACCORDANCE WITH ARTICLE 600 OF THE NATIONAL ELECTRICAL CODE AND/OR OTHER APPLICABLE LOCAL CODES. THIS INCLUDES PROPER GROUNDING & BONDING OF THE SIGN. SIGN WILL BEAR UL LABEL(S).





Design #	0423994Ar1
Sheet	3 of 10
Client	SEVEN BREW COFFEE
Address	1200 E Ogden Ave. Naperville, IL 60563
Account Rep.	WF
Designer	RMS
Date	1/12/24
Approval / Date	
Client	
Sales	
Estimating	
Art	
Engineering	
Landlord	

Revision / Date	
R1-AC-1/17/24: rev F	



○ FRONT ELEVATION - SCALE: 3/16" = 1' - 0"

FRONT ELEVATION SCALE: 3/16" = 1'-0"

EXHIBIT D

CHANDLER SIGNS
chandlersigns.com

National Headquarters 14201 Sovereign Road #101
Fort Worth, TX 76155
(214) 902-2000 Fax (214) 902-2044

San Antonio 17319 San Pedro Avenue
Suite 200
San Antonio, TX 78232
(210) 349-3804 Fax (210) 349-8724

Northeast US 2301 River Road, Suite 201
Louisville, KY 40206
(502) 897-9800 Cell (502) 554-2575

Georgia 111 Woodstone Place
Dawsonville, GA 30534
(678) 725-8852 Fax (210) 349-8724

South Texas PO BOX 125 306 Daral Drive
Portland, TX 78374
(361) 563-5599 Fax (361) 643-6533

This drawing is the property of Chandler Signs, LLC. All rights to its use for reproduction are reserved by Chandler Signs, LLC.

FINAL ELECTRICAL CONNECTION BY CUSTOMER

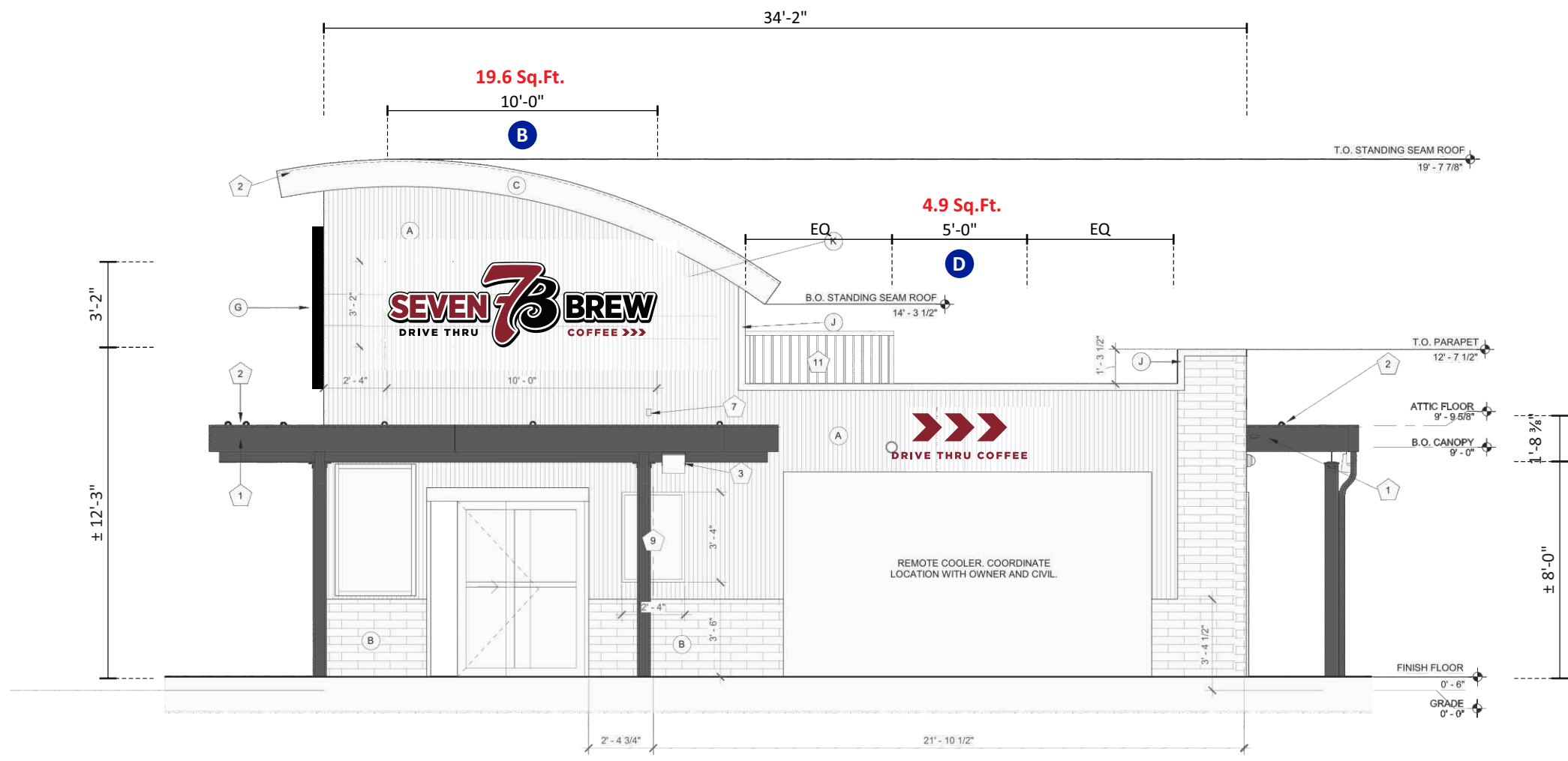
THIS SIGN IS INTENDED TO BE INSTALLED IN ACCORDANCE WITH ARTICLE 600 OF THE NATIONAL ELECTRICAL CODE AND/OR OTHER APPLICABLE LOCAL CODES. THIS INCLUDES PROPER GROUNDING & BONDING OF THE SIGN. SIGN WILL BEAR UL LABEL(S).

UL



Design #	0423994Ar1
Sheet	4 of 10
Client	SEVEN BREW COFFEE
Address	1200 E Ogden Ave. Naperville, IL 60563
Account Rep.	WF
Designer	RMS
Date	1/12/24
Approval / Date	
Client	
Sales	
Estimating	
Art	
Engineering	
Landlord	

Revision / Date	
R1-AC-1/17/24: rev F	



SIDE ELEVATION - SCALE: 3/16" = 1' - 0"

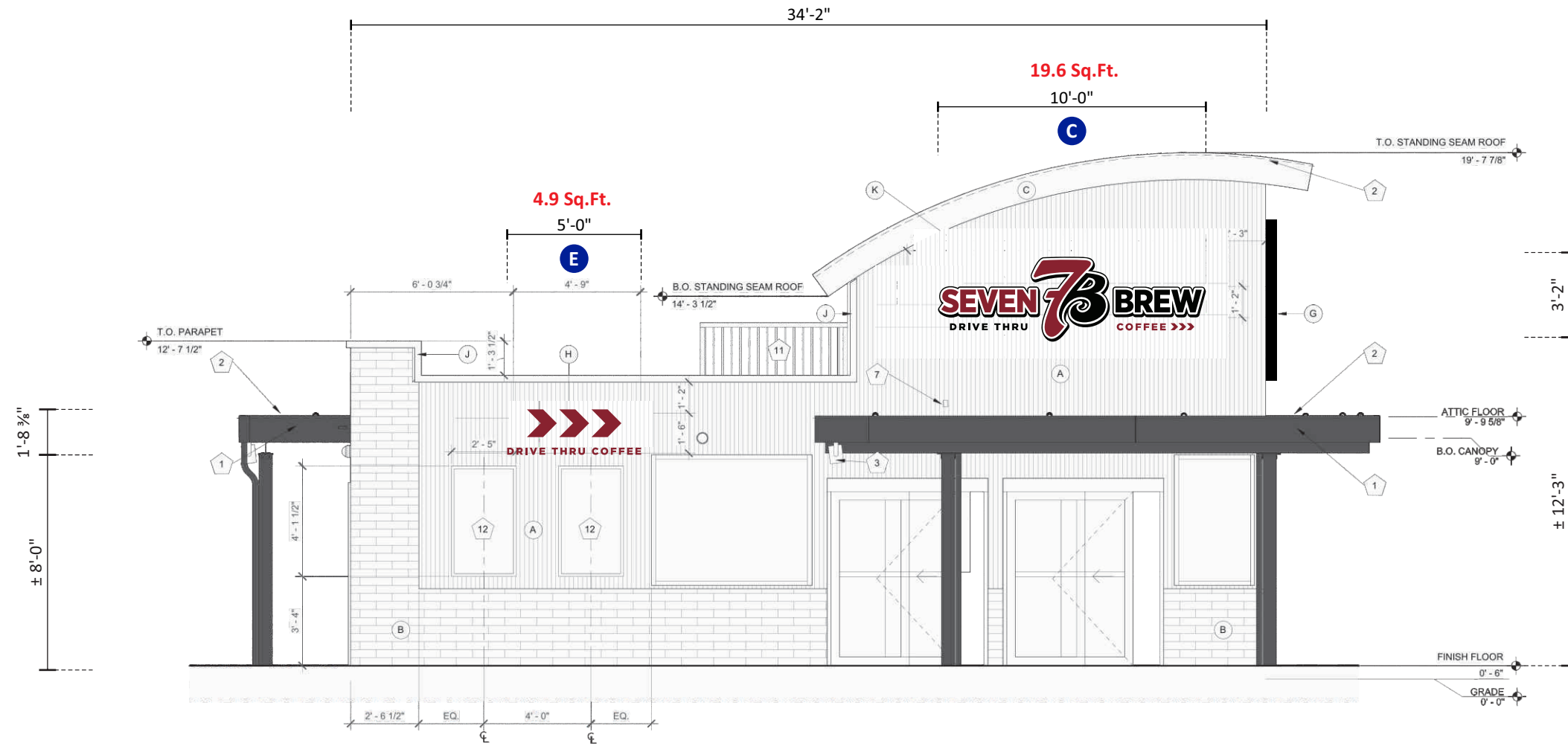
CHANDLER SIGNS
chandlersigns.com

National Headquarters	14201 Sovereign Road #101 Fort Worth, TX 76155 (214) 902-2000 Fax (214) 902-2044
San Antonio	17319 San Pedro Avenue Suite 200 San Antonio, TX 78232 (210) 349-3804 Fax (210) 349-8724
Northeast US	2301 River Road, Suite 201 Louisville, KY 40206 (502) 897-9800 Cell (502) 554-2575
Georgia	111 Woodstone Place Dawsonville, GA 30534 (678) 725-8852 Fax (210) 349-8724
South Texas	PO BOX 125 206 Daral Drive Portland, TX 78374 (361) 563-5599 Fax (361) 643-6533

This drawing is the property of Chandler Signs, LLC. All rights to its use for reproduction are reserved by Chandler Signs, LLC.

FINAL ELECTRICAL CONNECTION BY CUSTOMER

THIS SIGN IS INTENDED TO BE INSTALLED IN ACCORDANCE WITH ARTICLE 600 OF THE NATIONAL ELECTRICAL CODE AND/OR OTHER APPLICABLE LOCAL CODES. THIS INCLUDES PROPER GROUNDING & BONDING OF THE SIGN. SIGN WILL BEAR UL LABEL(S).



○ DRIVE THRU ELEVATION - SCALE: 3/16" = 1' - 0"

Design #
0423994Ar1

Sheet 5 of 10

Client
SEVEN BREW COFFEE

Address
1200 E Ogden Ave.
Naperville, IL 60563

Account Rep. WF

Designer RMS

Date 1/12/24

Approval / Date

Client	
Sales	
Estimating	
Art	
Engineering	
Landlord	

Revision / Date

R1-AC-1/17/24: rev F



chandlersigns.com

National Headquarters 14201 Sovereign Road #101
Fort Worth, TX 76155
(214) 902-2000 Fax (214) 902-2044

San Antonio 17319 San Pedro Avenue
Suite 200
San Antonio, TX 78232
(210) 349-3804 Fax (210) 349-8724

Northeast US 2301 River Road, Suite 201
Louisville, KY 40206
(502) 897-9800 Cell (502) 554-2575

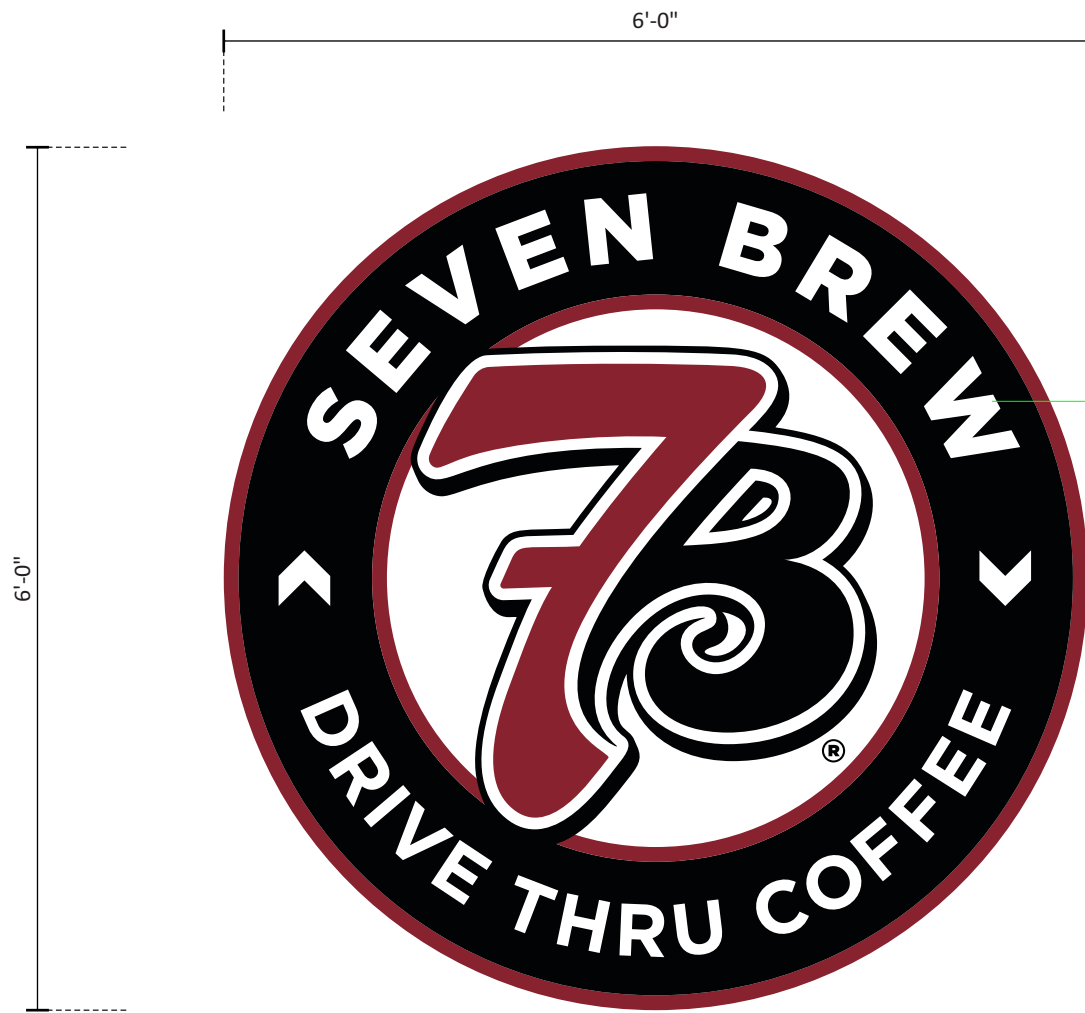
Georgia 111 Woodstone Place
Dawsonville, GA 30534
(678) 725-8852 Fax (210) 349-8724

South Texas PO BOX 125 206 Daral Drive
Portland, TX 78374
(361) 563-5599 Fax (361) 643-6533

This drawing is the property of
Chandler Signs, LLC
All rights to its use for reproduction
are reserved by Chandler Signs, LLC

FINAL ELECTRICAL CONNECTION BY CUSTOMER

THIS SIGN IS INTENDED TO BE INSTALLED
IN ACCORDANCE WITH ARTICLE 600 OF THE
NATIONAL ELECTRICAL CODE AND/OR OTHER
APPLICABLE LOCAL CODES. THIS INCLUDES
PROPER GROUNDING & BONDING OF THE SIGN.
SIGN WILL BEAR UL LABEL(S).



PERIMETER COPY, ARROWS & "7B"
TO BE EMBOSSED ADD'L 1/4"



4" DEEP SINGLE FACED ALUMINUM SIGN CABINET
- RETURNS & BACKS PAINTED BLACK
INTERIOR PTD LIGHT ENHANCING WHITE

EMBOSSSED FORMED FACE (SEE COLOR KEY)
- WHITE CIRCLE AREA TO BE DEBOSSSED AROUND "7B" LOGO & COPY
AS SHOWN IN PHOTO BELOW

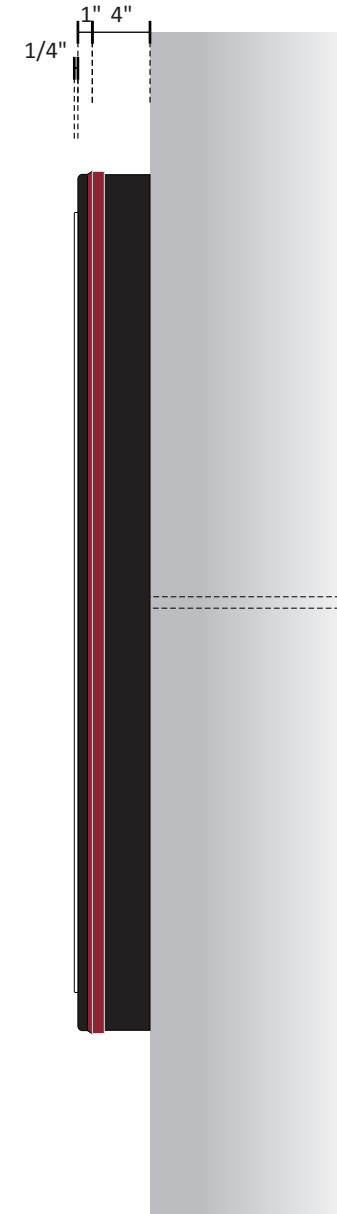
INTERNALLY ILLUMINATED WITH WHITE LEDs
WHITE TETRA MAX 7100 LEDs - REMOTE POWER SUPPLIES
CUSTOMER TO PROVIDE POWER TO SIGN

**FLUSH MOUNT MEDALLION IN FRONT FASCIA
BLOCKING TO BE PROVIDED BY GC PRIOR TO INSTALLATION**

COLOR KEY

-  PMS 202 C RED
-  BLACK

**FIELD SURVEY REQUIRED PRIOR
TO MANUFACTURE.**



END VIEW

A S/F ILLUMINATED SIGN

ONE [1] REQUIRED - MANUFACTURE & INSTALL

SCALE: 3/4" = 1'-0"

36.0 SQ. FT.



SIMULATED NIGHT VIEW

Design #	0423994Ar1
Sheet	6 of 10
Client	SEVEN BREW COFFEE
Address	1200 E Ogden Ave. Naperville, IL 60563
Account Rep.	WF
Designer	RMS
Date	1/12/24
Approval / Date	
Client	
Sales	
Estimating	
Art	
Engineering	
Landlord	
Revision / Date	

R1-AC-1/17/24: rev F

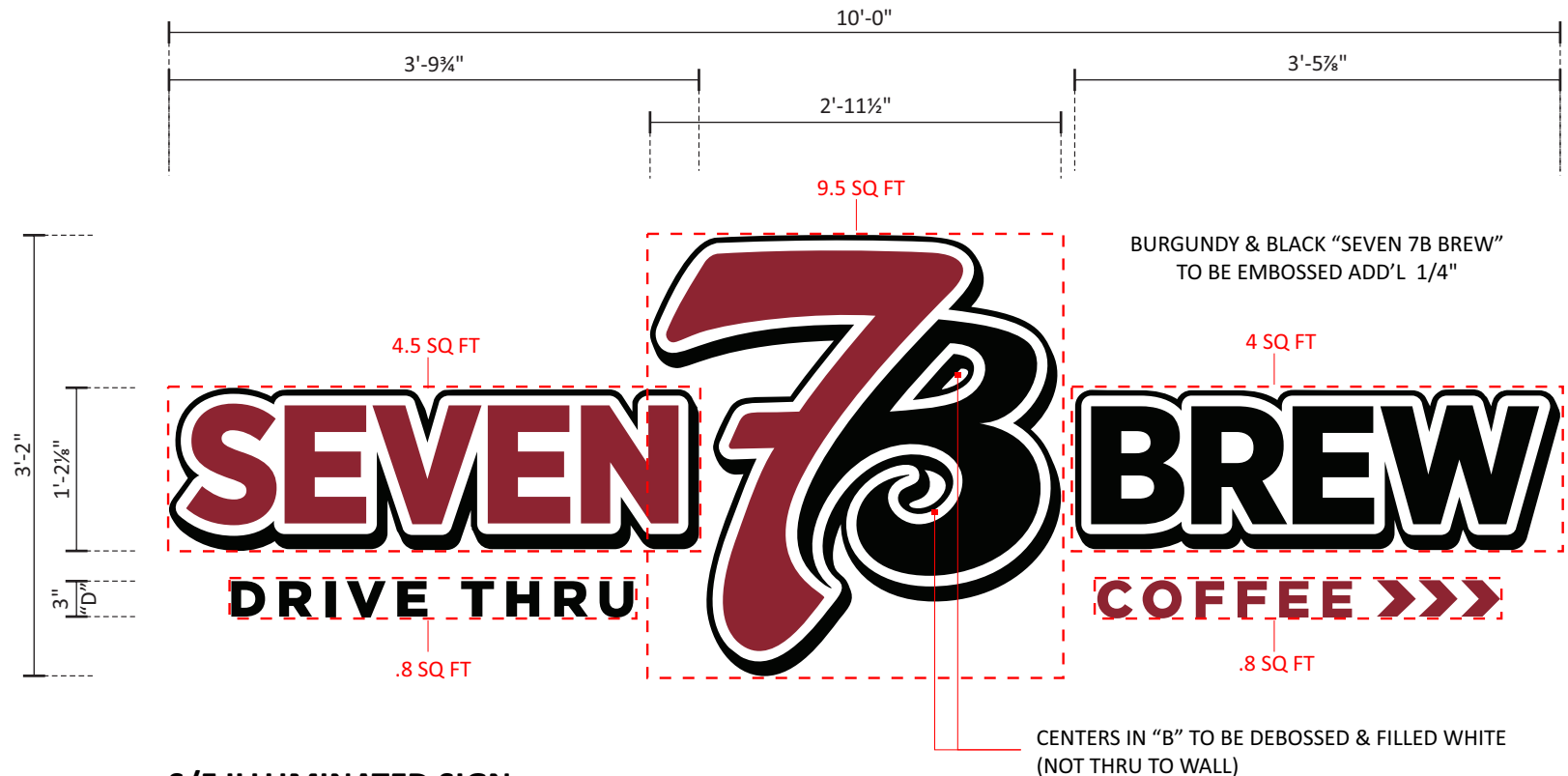


chandler signs.com	
National Headquarters	14201 Sovereign Road #101 Fort Worth, TX 76155 (214) 902-2000 Fax (214) 902-2044
San Antonio	17319 San Pedro Avenue Suite 200 San Antonio, TX 78232 (210) 349-3804 Fax (210) 349-8724
Northeast US	2301 River Road, Suite 201 Louisville, KY 40206 (502) 897-9800 Call (502) 554-2575
Georgia	111 Woodstone Place Dawsonville, GA 30534 (678) 725-8852 Fax (210) 349-8724
South Texas	PO BOX 125 206 Daral Drive Portland, TX 78374 (361) 563-5599 Fax (361) 643-6533

This drawing is the property of
Chandler Signs, LLC
All rights to its use for reproduction
are reserved by Chandler Signs, LLC

**FINAL ELECTRICAL
CONNECTION BY
CUSTOMER**

THIS SIGN IS INTENDED TO BE INSTALLED
IN ACCORDANCE WITH ARTICLE 600 OF THE
NATIONAL ELECTRICAL CODE AND/OR OTHER
APPLICABLE LOCAL CODES. THIS INCLUDES
PROPER GROUNDING & BONDING OF THE SIGN.
SIGN WILL BEAR UL LABEL(S).



"SEVEN 7B BREW":
 4" DEEP SINGLE FACED ALUMINUM SIGN
 CABINETS - RETURNS PAINTED BLACK -
 INTERIOR PAINTED LIGHT-ENHANCING WHITE

FORMED & EMBOSSED PAN POLYCARBONATE
 FACES W/ TRANSLUCENT FILM GRAPHICS (SEE COLOR KEY) -
 BLOCK OUT VINYL AS REQ'D
 CENTERS IN "B" ON LOGO TO BE DEBOSSSED -
 SEE EXAMPLE PHOTO BELOW

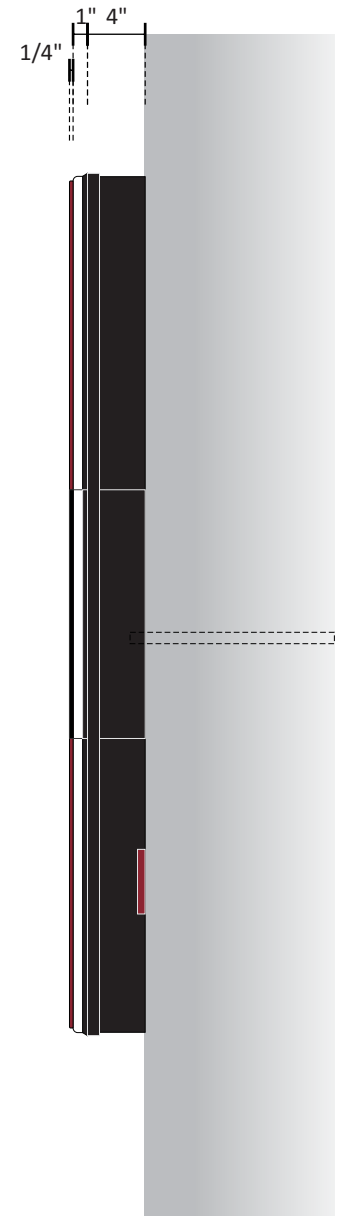
1/4" DIA. WEEP HOLES IN LOW POINTS OF
 CABINETS w/ ALUMINUM LIGHT SCREENS @
 EACH WEEP HOLE TO PREVENT LIGHT LEAKS

INTERNALLY ILLUMINATED w/ 7100k WHITE GE
 TETRAMAX LED's - REMOTE POWER SUPPLIES -
 CUSTOMER TO PROVIDE POWER TO SIGN

120 - 277 VAC 20A 2-POLE SWITCH w/ BELL
 MX1050 COVER

TO BE FLUSH MOUNTED TO FASCIA w/ NON-
 CORROSIVE HARDWARE AS REQ'D

"DRIVE THRU" & "COFFEE>>>":
 1/2" DEEP ALUMINUM FLAT CUT-OUT LETTERS
 (SEE COLOR KEY) - TO BE STUD-MOUNTED FLUSH
 TO FASCIA



END VIEW

BC S/F ILLUMINATED SIGN

ONE [1] SET(S) REQUIRED - MANUFACTURE & STOCK: **19.6 Sq.Ft. EACH SET** SCALE: 3/4" = 1'-0"

5" DEEP ALUMINUM EMBOSSED-FACE, LED ILLUMINATED "SEVEN 7B BREW" WALL SIGN w/ RAISED VINYL GRAPHICS PER COLOR KEY -
 1/2" DEEP FCO's TO READ "DRIVE THRU" & "COFFEE>>>" PAINTED PER COLOR KEY - BACKS DRILLED & TAPPED FOR STUD-MOUNTING



SIMULATED NIGHT VIEW

BRAND COLORS

PMS 202	BLACK	WHITE
C: 29.54%	C: 0%	C: 0%
M: 95.11%	M: 0%	M: 0%
Y: 74.72%	Y: 0%	Y: 0%
K: 29.59%	K: 100%	K: 0%

Design #	
0423994Ar1	
Sheet 7 of 10	
Client	
SEVEN BREW COFFEE	
Address	
1200 E Ogden Ave. Naperville, IL 60563	
Account Rep.	WF
Designer	RMS
Date	1/12/24
Approval / Date	
Client	
Sales	
Estimating	
Art	
Engineering	
Landlord	
Revision / Date	
R1-AC-1/17/24: rev F	

CHANDLER SIGNS
 chandlersigns.com

National Headquarters 14201 Sovereign Road #101
 Fort Worth, TX 76155
 (214) 902-2000 Fax (214) 902-2044

San Antonio 17319 San Pedro Avenue
 Suite 200
 San Antonio, TX 78232
 (210) 349-3804 Fax (210) 349-8724

Northeast US 2301 River Road, Suite 201
 Louisville, KY 40206
 (502) 897-9800 Cell (502) 554-2575

Georgia 111 Woodstone Place
 Dawsonville, GA 30534
 (678) 725-8852 Fax (210) 349-8724

South Texas PO BOX 125 206 Daral Drive
 Portland, TX 78374
 (361) 563-5599 Fax (361) 643-6533

This drawing is the property of Chandler Signs, LLC. All rights to its use for reproduction are reserved by Chandler Signs, LLC

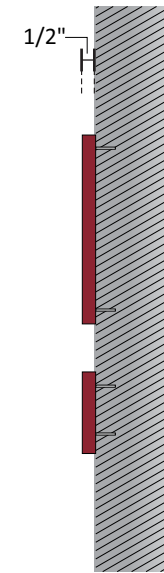
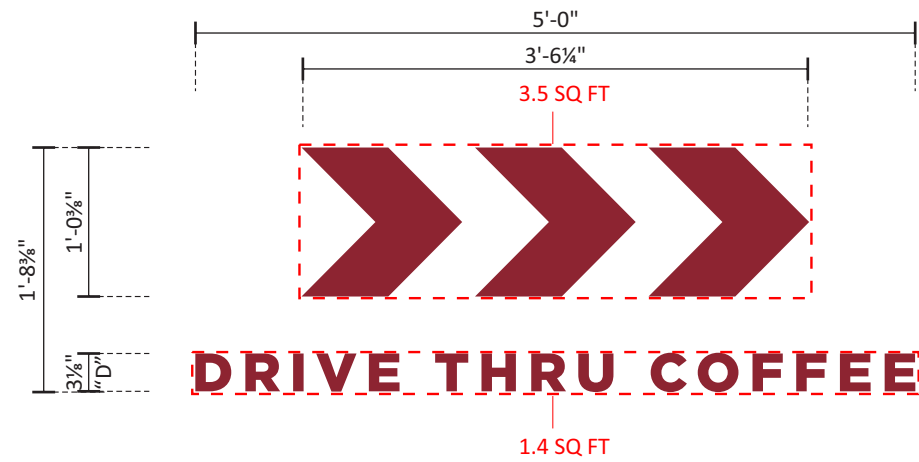
FINAL ELECTRICAL CONNECTION BY CUSTOMER

THIS SIGN IS INTENDED TO BE INSTALLED IN ACCORDANCE WITH ARTICLE 600 OF THE NATIONAL ELECTRICAL CODE AND/OR OTHER APPLICABLE LOCAL CODES. THIS INCLUDES PROPER GROUNDING & BONDING OF THE SIGN. SIGN WILL BEAR UL LABEL(S).



Design #	0423994Ar1
Sheet	8 of 10
Client	SEVEN BREW COFFEE
Address	1200 E Ogden Ave. Naperville, IL 60563
Account Rep.	WF
Designer	RMS
Date	1/12/24
Approval / Date	
Client	
Sales	
Estimating	
Art	
Engineering	
Landlord	

Revision / Date	
R1-AC-1/17/24: rev F	



SIDE VIEW N.T.S.

DE FLAT CUT-OUT SIGN SCALE: 3/4" = 1'-0"
 TWO [2] SET(S) REQUIRED - MANUFACTURE & STOCK: **4.9 Sq.Ft. EACH SET**

1/2" DEEP FCO's TO READ "DRIVE THRU COFFEE>>>" -
 PAINTED TO MATCH PMS 202c BURGUNDY --
 BACKS DRILLED & TAPPED FOR FLUSH STUD-MOUNTING -
 NON-ILLUMINATED

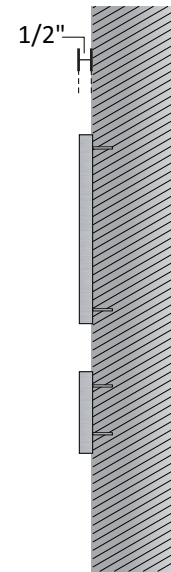
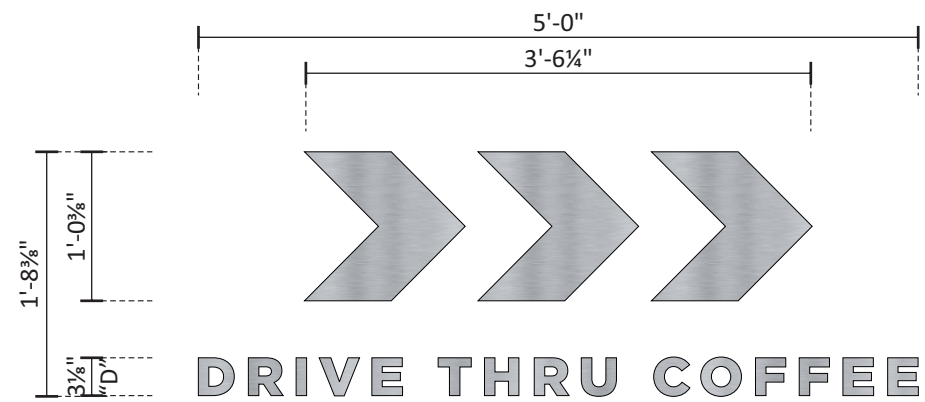


chandlersigns.com	
National Headquarters	14201 Sovereign Road #101 Fort Worth, TX 76155 (214) 902-2000 Fax (214) 902-2044
San Antonio	17319 San Pedro Avenue Suite 200 San Antonio, TX 78232 (210) 349-3804 Fax (210) 349-8724
Northeast US	2301 River Road, Suite 201 Louisville, KY 40206 (502) 897-9800 Cell (502) 554-2575
Georgia	111 Woodstone Place Dawsonville, GA 30534 (678) 725-8852 Fax (210) 349-8724
South Texas	PO BOX 125 206 Daral Drive Portland, TX 78374 (361) 563-5599 Fax (361) 643-6533

This drawing is the property of
 Chandler Signs, LLC
 All rights to its use for reproduction
 are reserved by Chandler Signs, LLC

FINAL ELECTRICAL CONNECTION BY CUSTOMER

THIS SIGN IS INTENDED TO BE INSTALLED IN ACCORDANCE WITH ARTICLE 600 OF THE NATIONAL ELECTRICAL CODE AND/OR OTHER APPLICABLE LOCAL CODES. THIS INCLUDES PROPER GROUNDING & BONDING OF THE SIGN. SIGN WILL BEAR UL LABEL(S).



END VIEW

F FLAT CUT-OUT SIGN SCALE: 3/4" = 1'-0"
 ONE [1] SET REQ'D - MANUFACTURE & INSTALL:

1/2" THICK ALUMINUM FCO'S TO READ ">>> DRIVE THRU COFFEE" -
 BRUSHED HORIZONTAL GRAIN FINISH -
 BACKS DRILLED & TAPPED FOR FLUSH STUD-MOUNTING -
 NON-ILLUMINATED

NOTE: VARIANCE REQUIRED FOR THIS SIGN

Design #	0423994Ar1
Sheet	9 of 10
Client	SEVEN BREW COFFEE
Address	1200 E Ogden Ave. Naperville, IL 60563
Account Rep.	WF
Designer	RMS
Date	1/12/24
Approval / Date	
Client	
Sales	
Estimating	
Art	
Engineering	
Landlord	

Revision / Date	
R1-AC-1/17/24: rev F	



chandersigns.com

National Headquarters	14201 Sovereign Road #101 Fort Worth, TX 76155 (214) 902-2000 Fax (214) 902-2044
San Antonio	17319 San Pedro Avenue Suite 200 San Antonio, TX 78232 (210) 349-3804 Fax (210) 349-8724
Northeast US	2301 River Road, Suite 201 Louisville, KY 40206 (502) 897-9800 Cell (502) 554-2575
Georgia	111 Woodstone Place Dawsonville, GA 30534 (678) 725-8852 Fax (210) 349-8724
South Texas	PO BOX 125 206 Daral Drive Portland, TX 78374 (361) 563-5599 Fax (361) 643-6533

This drawing is the property of Chandler Signs, LLC. All rights to its use for reproduction are reserved by Chandler Signs, LLC

FINAL ELECTRICAL CONNECTION BY CUSTOMER

THIS SIGN IS INTENDED TO BE INSTALLED IN ACCORDANCE WITH ARTICLE 600 OF THE NATIONAL ELECTRICAL CODE AND/OR OTHER APPLICABLE LOCAL CODES. THIS INCLUDES PROPER GROUNDING & BONDING OF THE SIGN. SIGN WILL BEAR UL LABEL(S).