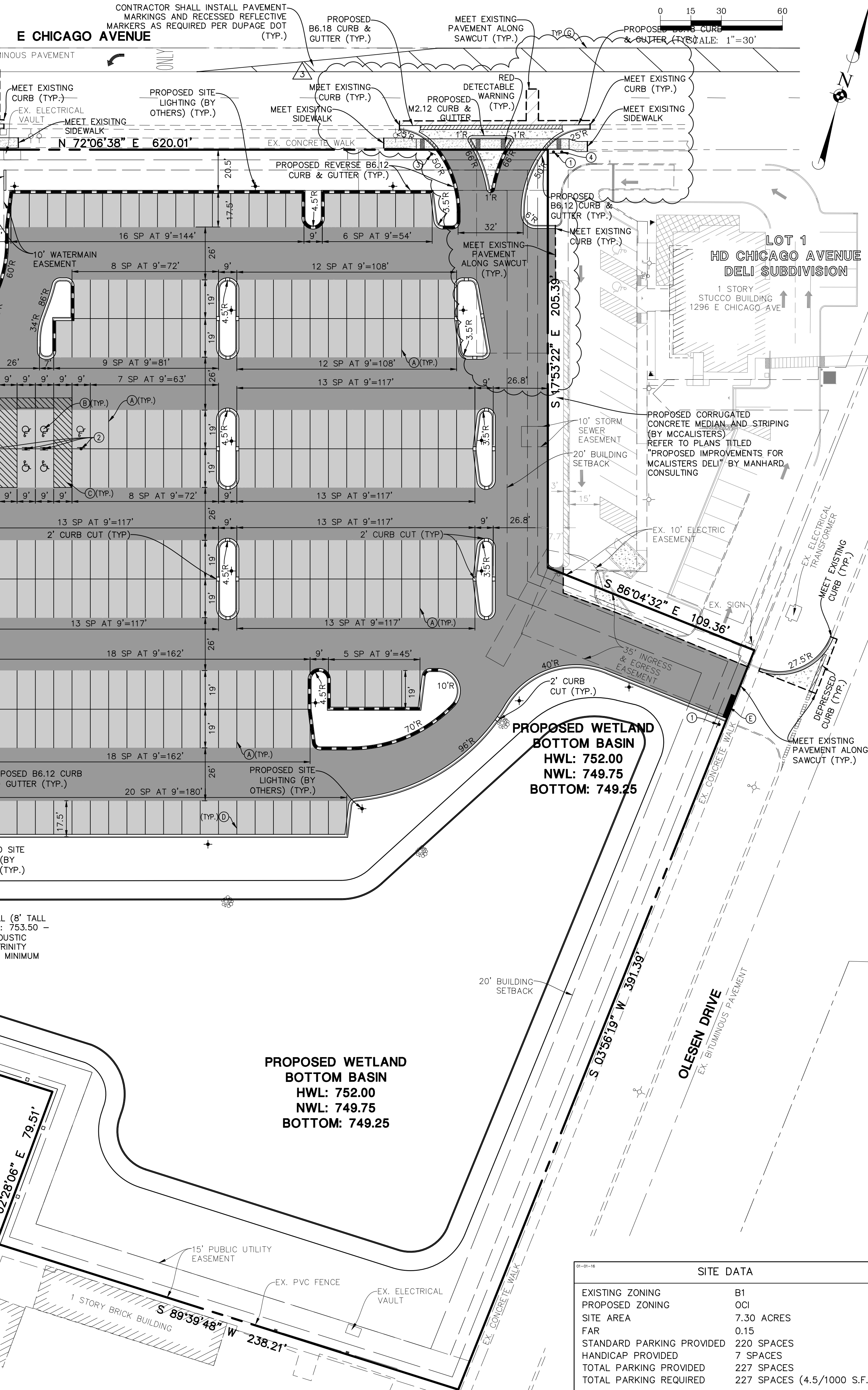


CONTROL POINT FOR LAYOUT OF ALL PROPOSED IMPROVEMENTS. BUILDING AND PARKING TO BE PARALLEL AND PERPENDICULAR TO NORTH PROPERTY LINE UNLESS OTHERWISE NOTED.



**PROPOSED BUILDING**  
 46,159 S.F. (1st FLOOR)  
 4,263 S.F. (MEZZANINE)  
 F.F.=757.50  
 G.F.=757.00  
 DOCK=753.50

**PROPOSED WETLAND BOTTOM BASIN**  
 HWL: 752.00  
 NWL: 749.75  
 BOTTOM: 749.25

**PROPOSED WETLAND BOTTOM BASIN**  
 HWL: 752.00  
 NWL: 749.75  
 BOTTOM: 749.25

**PAVEMENT MARKING LEGEND**

(A)	4" YELLOW LINE
(B)	LETTERS AND SYMBOLS PAVEMENT MARKINGS
(C)	4" YELLOW DIAGONAL AT 45° SPACED 2' O.C.
(D)	12" WHITE BAR CROSSWALK
(E)	24" WHITE STOP BAR
(F)	6" WHITE LINE
(G)	12" YELLOW DIAGONAL AT 45° SPACED 30' O.C.

**SIGN LEGEND**

①	R1-1 STOP SIGN
②	R7-8 HANDICAP PARKING SIGN (ON BOLLARD)
③	R3-2 NO LEFT TURN
④	R3-5 RIGHT TURN ONLY

**SITE DATA**

EXISTING ZONING	B1
PROPOSED ZONING	OCI
SITE AREA	7.30 ACRES
FAR	0.15
STANDARD PARKING PROVIDED	220 SPACES
HANDICAP PROVIDED	7 SPACES
TOTAL PARKING PROVIDED	227 SPACES
TOTAL PARKING REQUIRED	227 SPACES (4.5/1000 S.F.)

**Manhard CONSULTING**  
 1100 W. WASHINGTON ST. SUITE 200, NAPERVILLE, IL 60563  
 TEL: 630.251.1000 FAX: 630.251.1001  
 WWW.MANHARDCONSULTING.COM  
 Civil Engineers • Surveyors • Water Resources Engineers • Wetland Scientists • Environmental Engineers • Planners  
 Construction Managers • Environmental Scientists • Landscape Architects

**PROPOSED HEINEN'S GROCERY STORE**  
 CITY OF NAPERVILLE, ILLINOIS  
 OVERALL SITE DIMENSIONAL AND PAVING PLAN

PROJ. MGR.: MDE  
 PROJ. ASSOC.: JRM  
 DRAWN BY: EJB  
 DATE: 02/09/24  
 SCALE: 1"=30'  
 SHEET  
**EXB**  
 HGS.NVL01