

ALL RTU VENTS AND EXHAUSTS TO BE PAINTED W/ ROOF SCREEN WHERE INSTALLATION HEIGHT IS ABOVE PARAPET

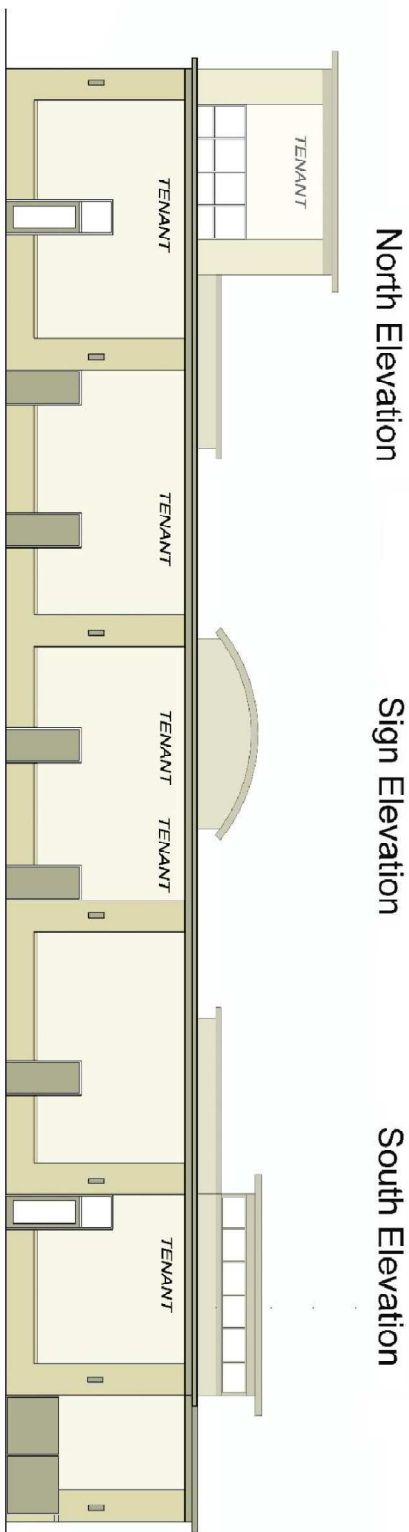
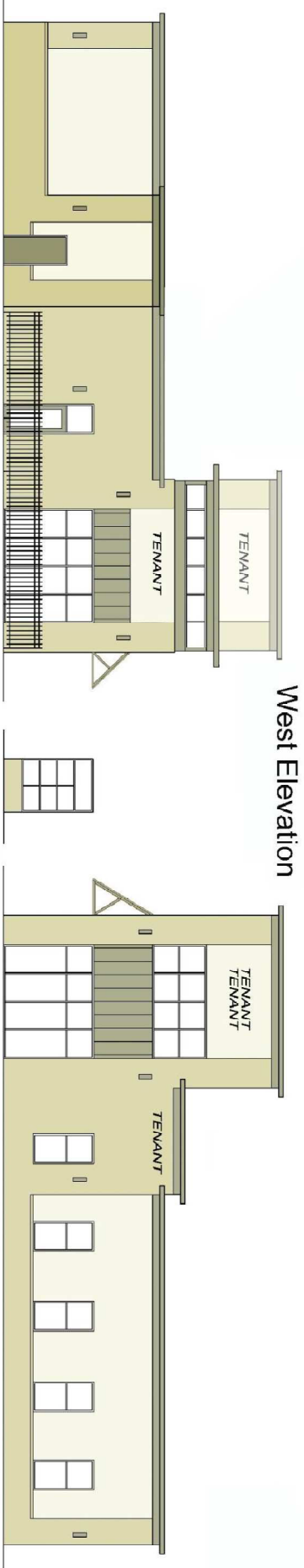
WEST FACADE:	3012 SF, 100% STONE
ALUM STOREFRONT	1034 SF, 34%
BRICK MSTRY	918 SF, 30.5%
NORTH FACADE:	1944 SF, 100% STONE
ALUM STOREFRONT	236 SF, 17%
STEEL DOORS	43 SF, 3.15%
BRICK MSTRY	53 SF, OVER BRICK CANOPY
SOUTH FACADE:	1975 SF, 100% STONE
ALUM STOREFRONT	201 SF, 12.5%
BRICK MSTRY	63 SF, 3.2%
EAST FACADE:	2008 SF, 100% STONE
ALUM STOREFRONT	103 SF, 5.1%
STEEL DOORS	108 SF, 5.4%
BRICK MSTRY	1748 SF, 70%
CANOPY:	219 SF, 8.7%
GLASS ASSISTANT BOARD BUFF TM	
STONE MEDIUM BROWN	
STONE MEDIUM BROWN	
ALUM CANOPY MEDIUM BRONZE	
NOTE: CANOPY IS INSTALLED OVER TRASH BIN, 5'-0" HIGH	

Project:  
 Design Point  
 1336 No. Rt 59  
 Naperville, Illinois

Sheet:  
 Building Elevations

DATE: 12.19.22  
 SHEET NUMBER: 22106  
 REVISIONS:  
 1.1.07.22  
 1.2.01.22  
 1.2.19.22

SHEET  
**SD2**



**WEST FACADE:** 3072 S.F. 100%  
 STONE 1066 S.F. 34.5%  
 ALUM STOREFRONT 1234 S.F. 39%  
 BRICK MESH 970 S.F. 31.5%

**NORTH FACADE:** 1984 S.F. 100%  
 STONE STOREFRONT 698 S.F. 35%  
 ALUM STOREFRONT 1286 S.F. 65%  
 27" GL. DOORS 21 S.F. 1.1%  
 BRICK MESH 439 S.F. 22.2%  
 CANOPY 33 S.F. 1.7%

**SOUTH FACADE:** 1515 S.F. 100%  
 STONE STOREFRONT 771 S.F. 51%  
 ALUM STOREFRONT 403 S.F. 26.6%  
 BRICK MESH 341 S.F. 22.4%  
 CANOPY 83 S.F. 5.5%

**EAST FACADE:** 2436 S.F. 100%  
 STONE 889 S.F. 36%  
 ALUM STOREFRONT 63 S.F. 3%  
 27" GL. DOORS 102 S.F. 4%  
 BRICK MESH 1282 S.F. 53%  
 CANOPY 219 S.F. 9.1%

**ROCK SCHEDULE:**  
 BRICK MESH - 100' BUFF TAN  
 STONE - 100' BUFF TAN  
 STONEFRONT MEDIUM BRONZE  
 ALUM CANOPY MEDIUM BRONZE  
 OVER 100' BUFF TAN  
 OVER 100' BUFF TAN

DESIGN POINTE  
 1336 North Rt 59 N aperville, Illinois

EXHIBIT F