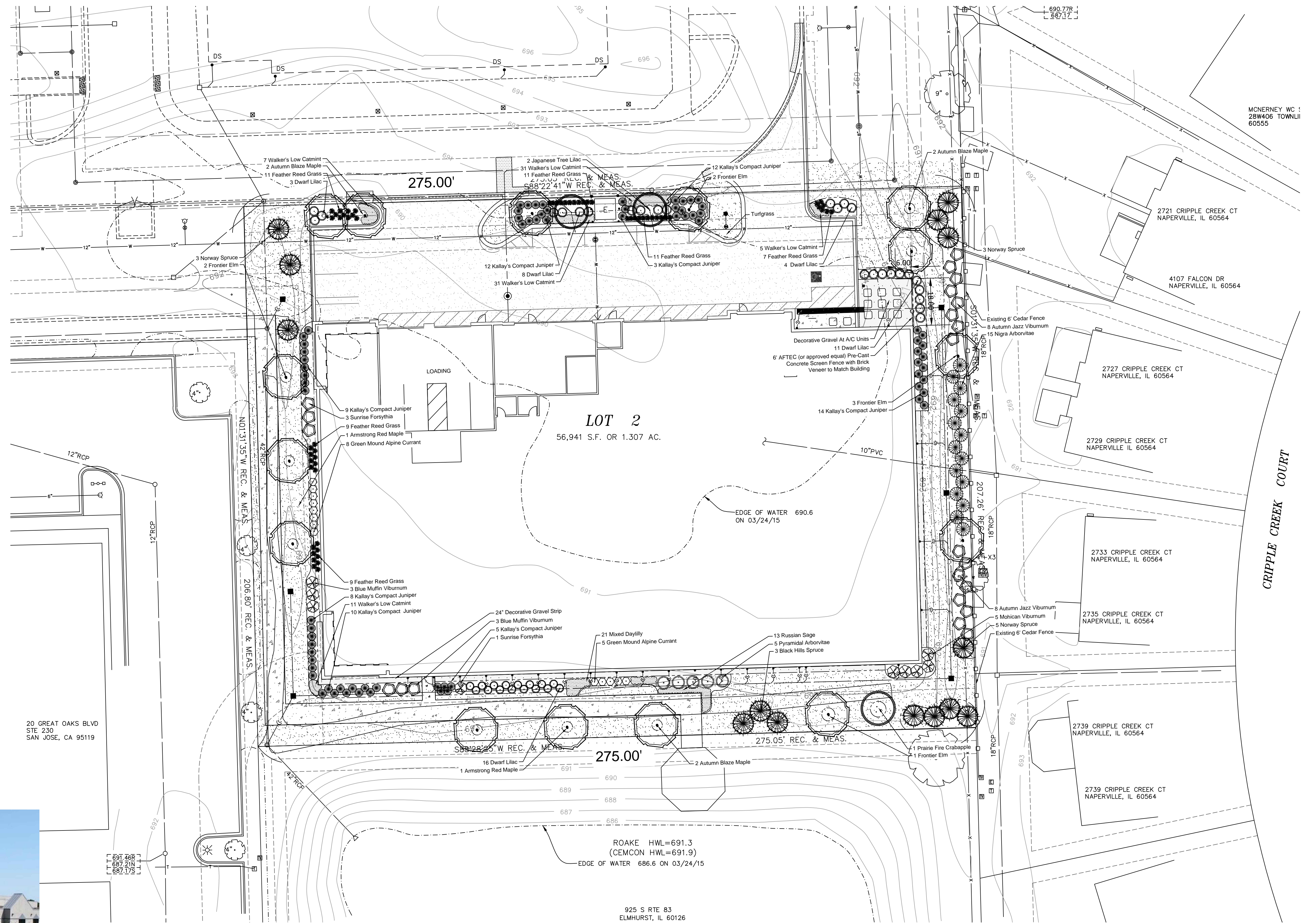


Joint Utility Locating Information for Excavators

Call 48 hours before you dig (Excluding Sat., Sun. & Holidays)



PRE-CAST CONCRETE SCREEN FENCE

Scale: None Brick Veneer to Match Building Exterior



LANDSCAPE PLAN

Scale: 1" = 20'0"

PROJECT NAME	NAPERVILLE SELF STORAGE NAPERVILLE ILLINOIS
SHEET TITLE	OVERALL LANDSCAPE PLAN
DATE	03/24/15
SCALE	1" = 20'
PROJECT NUMBER	6062
DESIGNED BY	CHRISTOPHER M. URBANCZYK
CHECKED BY	CHRISTOPHER M. URBANCZYK
DATE	03/24/15
PROJECT NUMBER	6062
REVISIONS	
DATE	
BY	

MS Michael Snyder
LA Landscape Architecture
Phone: 847.804.6752
www.msla.biz

LI.0



Joint Utility Locating Information for Excavators

Call 48 hours before you dig (Excluding Sat., Sun. & Holidays)

1. Contractor responsible for contacting JULIE - Utility Locators (811 or 800-892-0123) to have site marked prior to excavation or planting.

2. Contractor to verify all plant quantities shown on Plant & Material List and landscape planting symbols and report any discrepancies to Landscape Architect or General Contractor.

3. All plantings shall comply with standards as described in American Standard of Nursery Stock - Z60.1 ANSI (latest version). Landscape Architect reserves the right to inspect, and potentially reject any plants that are inferior, compromised, undersized, diseased, improperly transported, installed incorrectly or damaged. No sub-standard "B Grade" or "Park Grade" plant material shall be accepted. Plant material shall originate from nursery(ies) with a similar climate as the planting site.

4. Any potential plant substitutions must be approved by Landscape Architect or Owner. All plants must be installed as per sizes indicated on Plant & Material Schedule, unless approved by Landscape Architect. Any changes to sizes shown on plan must be submitted in writing to the Landscape Architect prior to installation.

5. Topsoil in Parking Lot Islands (if applicable): All parking lot islands to be backfilled with topsoil to a minimum depth of 18" to insure long-term plant health. Topsoil should be placed within 3" of finish grade by General Contractor / Excavation Contractor during rough grading operations/activity. The landscape contractor shall be responsible for the fine grading of all disturbed areas, planting bed areas, and lawn areas. Crown all parking lot islands a minimum of 6" to provide proper drainage, unless otherwise specified.

6. Tree Planting: Plant all trees slightly higher than finished grade at the root flare. Remove excess soil from the top of the root ball, if needed. Remove and discard non-biodegradable ball wrapping and support wire. Removed biodegradable burlap and wire cage (if present) from the top 1/3 of the rootball and carefully bend remaining wire down to the bottom of the hole. Once the tree has been placed into the hole and will no longer be moved, score the remaining 2/3 of the burlap and remove the twine. Provide three slow release fertilizer for each tree planted.

7. Tree Planting: Backfill tree planting holes 80% existing soils removed from excavation and 20% plant starter mix. Avoid air pockets and do not tamp soil down. Discard any gravel, rocks, heavy clay, or concrete pieces. When hole is 2/3 full, trees shall be watered thoroughly, and water left to soak in before proceeding to fill the remainder of the hole. Water again to full soak in the new planting. Each tree shall receive a 3" deep, 4-5' diameter (see planting details or planting plan) shredded hardwood bark mulch ring around all trees planted in lawn areas. Do not build up any mulch onto the trunk of any tree. Trees that are installed incorrectly will be replaced at the time and expense of the Landscape Contractor.

8. Shrub Planting: All shrubs to be planted in groupings as indicated on the Landscape Plan. Install with the planting of shrubs a 50% mix of plant starter with topsoil. Install topsoil into all plant beds as needed to achieve proper grade and displace undesirable soil (see planting detail). Remove all excessive gravel, clay and stones from plant beds prior to planting. When hole(s) are 2/3 full, shrubs shall be watered thoroughly, and water left to soak in before proceeding. Provide slow-release fertilizer packets at the rate of 1 per 24" height/diameter of shrub at planting.

9. Mulching: All tree and shrub planting beds to receive a 3" deep layer of high quality shredded hardwood bark mulch (not pigment dyed or enviro-mulch). All perennial planting areas (groupings) shall receive a 2" layer of shredded hardwood bark mulch, and groundcover areas a 1-2" layer of the same mulch. Do not mulch annual flower beds (if applicable). Do not allow mulch to contact plant stems and tree trunks.

10. Edging: All planting beds shall be edged with a 4" deep spade edge using a flat landscape spade or a mechanical edger. Bedlines are to be cut crisp, smooth as per plan. A clean definition between landscape beds and lawn is required. Pack mulch against lawn edge to hold in place.

11. Plant bed preparation: All perennial, groundcover and annual areas (if applicable) are required to receive a blend of organic soil (Soil Amendments) amendments prior to installation. Roto-till the following materials at the following ratio, into existing soil beds or installed topsoil beds to a depth of approximately 8"-10"

Per 100 SF of bed area:
3/4 CY Peat Moss or Mushroom Compost
3/4 CY blended/pulverized Topsoil
2 pounds starter fertilizer
1/4 CY composted manure

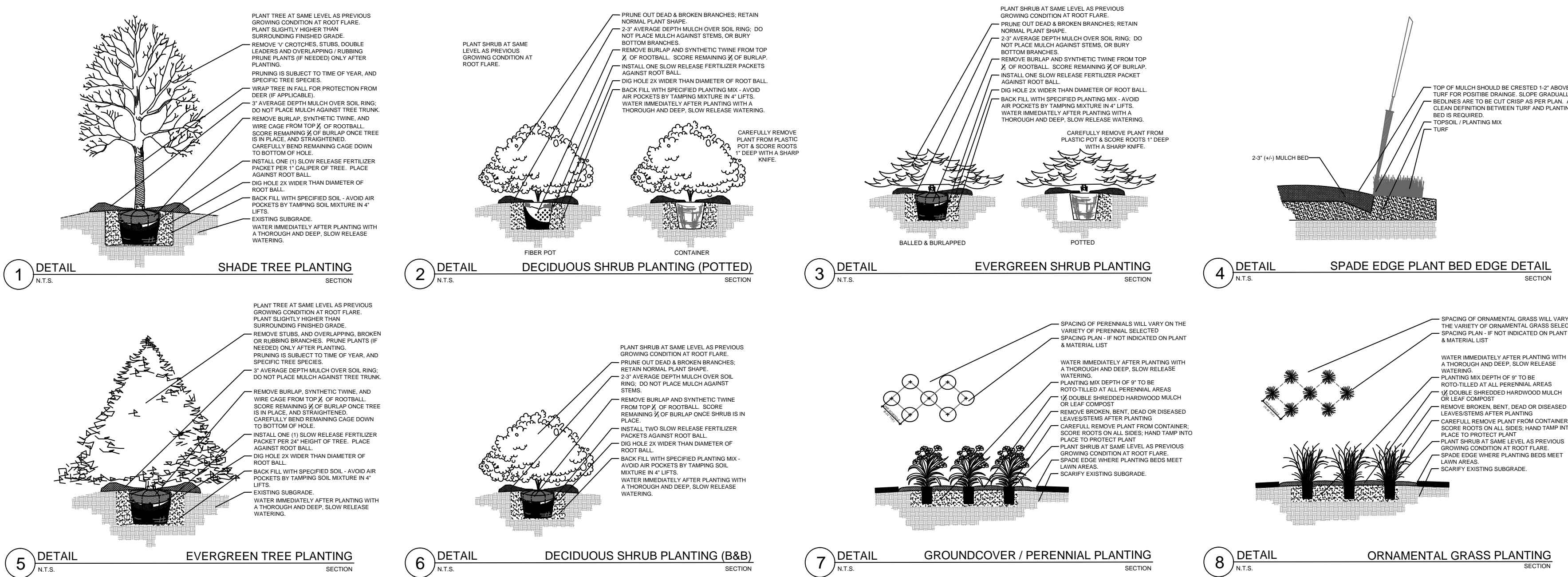
12. Installation preparation for all seeded areas: remove/kill off any existing unwanted vegetation prior to seeding. Prepare the topsoil (if adequate or provide as in item #6 above) and seed bed by removing all surface stones 1" or larger. Apply a starter fertilizer and specified seed uniformly at the specified rate, and provide mulch covering suitable to germinate and establish turf. Provide seed and fertilizer specifications to Landscape Architect and Owner prior to installation. Erosion control measures are to be used in swales and on slopes in excess of 1:3 and where applicable (see Civil Engineering Drawings). Methods of installation may vary at the discretion of the Landscape Contractor on his/her responsibility to establish and guarantee a smooth, uniform, quality turf. A minimum of 2" of blended, prepared and non-compacted topsoil is required for all lawn areas. If straw mulch is used as a mulch covering, a tackifier may be necessary to avoid wind dispersal of mulch covering. Marsh hay containing reed canary grass is NOT acceptable as a mulch covering.

An acceptable quality seed installation is defined as having:
No bare spots larger than one (1) square foot
No more than 10% of the total area with bare areas larger than one (1) square foot
A uniform coverage through all turf areas

13. Warranty and Replacements: All plantings are to be watered thoroughly at the time of planting, through construction and upon completion of project as required. Trees, Evergreens, and Shrubs (deciduous and evergreen) shall be guaranteed (100% replacement) for a minimum of one (1) year from the date of project completion. Perennials, groundcovers, and ornamental grasses shall be guaranteed for a minimum of one (1) growing season. Perennials, groundcovers, and ornamental grasses planted after September 15th shall be guaranteed through May 31st of the following year. Only one replacement per plant will be required during the warranty period, except for losses or replacements due to failure to comply with specified requirements. Watering and general ongoing maintenance instructions are to be supplied by the Landscape Contractor to the Owner upon completion of the project.

14. The Landscape Contractor is responsible for the watering and maintenance of all landscape areas for a period of 45 days after the substantial completion of the landscape installation. This shall include all trees, shrubs, evergreens, perennials, ornamental grasses, turf grass, no-mow grass, and native prairie seed mix / stormwater seed mix. Work also includes weeding, edging, mulching (only if required), fertilizing, trimming, sweeping up grass clippings, pruning and deadheading.

15. Project Completion: Landscape Contractor is responsible to conduct a final review of the project, upon completion, with the Landscape Architect, Client or Owner / Client Representative, and the General Contractor to answer questions, provide written care instructions for new plantings and turf, and insure that all specifications have been met.



PLANTING DETAILS

PLANT KEY	QUANTITY	BOTANICAL NAME	COMMON NAME	CALIPER/HEIGHT	SIZE	ROOT	SPECIFICATION / NOTES
Proposed Landscape Materials							
SHADE TREES (DECIDUOUS)							
ARM	2	Acer xfreemanii 'Armstrong'	Armstrong Red Maple	3.0"	B&B	Straight central leader, full and even crown. Prune only after planting	
ABM	6	Acer xfreemanii 'Autumn Blaze'	Autumn Blaze Maple	3.0"	B&B	Straight central leader, full and even crown. Prune only after planting	
FE	7	Ulmus 'Frontier'	Frontier Elm	3.0"	B&B	Straight central leader, full and even crown. Prune only after planting	

PLANT KEY	QUANTITY	BOTANICAL NAME	COMMON NAME	CALIPER/HEIGHT	SIZE	ROOT	SPECIFICATION / NOTES
ORNAMENTAL TREES (DECIDUOUS)							
PF	1	Malus x 'Prairifire'	Prairie Fire Flowering Crabapple	7-8' H	B&B	Well balanced multi-stemmed tree with minimum four canes, and full appearance	
JTL	2	Syringa reticulata 'Ivory Silk'	Ivory Silk Japanese Tree Lilac	2.5"	B&B	Straight central leader, full and even crown. Prune only after planting	

PLANT KEY	QUANTITY	BOTANICAL NAME	COMMON NAME	HEIGHT	SIZE	ROOT	SPECIFICATION / NOTES
EVERGREEN TREES							
NS	11	Picea abies	Norway Spruce	8'	B&B	Evenly shaped tree with branching to the ground	
BHS	3	Picea densata 'glauca'	Black Hills Spruce	8'	B&B	Evenly shaped tree with branching to the ground	
NA	15	Thuja occidentalis 'Nigra'	Nigra Arborvitae	60"	B&B	Evenly shaped tree with branching to the ground	

PLANT KEY	QUANTITY	BOTANICAL NAME	COMMON NAME	SHRUB SIZE (HEIGHT)	ROOT/CONT.	SPECIFICATION / NOTES
EVERGREEN SHRUBS						
KCPJ	73	Juniperus chinensis 'Kallay'	Kallay Compact Pfitzer Juniper	#5	Cont.	Full rounded well branched shrub
PA	5	Thuja occidentalis 'Pyramidalis'	Pyramidal Arborvitae	24"	Cont.	Full, well rooted plant, evenly shaped

PLANT KEY	QUANTITY	BOTANICAL NAME	COMMON NAME	SHRUB SIZE (HEIGHT)	ROOT/CONT.	SPECIFICATION / NOTES
DECIDUOUS SHRUBS						
SF	9	Forsythia intermedia 'Sunrise'	Sunrise Forsythia	42"	Cont.	Full, well rooted plant, evenly shaped
GNAC	13	Bibes alpinum 'Green Mound'	Green Mound Alpine Currant	#5	Cont.	Full, well rooted plant, evenly shaped
DPL	42	Syringa meyeri 'Palabai'	Palabai Dwarf Lilac	30"	Cont.	Full, well rooted plant, evenly shaped
BNMV	6	Viburnum dentatum 'Christom' Blue Muffin	Blue Muffin Arrowwood Viburnum	42"	Cont.	Full, well rooted plant, evenly shaped
AJAV	16	Viburnum dentatum 'Autumn Jazz'	Autumn Jazz Arrowwood Viburnum	60"	Cont.	Full, well rooted plant, evenly shaped
MV	5	Viburnum lantana 'Mohican'	Mohican Viburnum	42"	B&B	Full, well rounded plant with moist rootball and healthy appearance

PLANT KEY	QUANTITY	BOTANICAL NAME	COMMON NAME	CONTAINER	SIZE	SPECIFICATION / NOTES
ORNAMENTAL GRASSES						
KFRG	56	Calamagrostis acutiflora 'Karl Foerster'	Karl Foerster Feather Reed Grass	#1	Cont.	Full, well rooted plant

PLANT KEY	QUANTITY	BOTANICAL NAME	COMMON NAME	CONTAINER	SIZE	SPECIFICATION / NOTES
HERBACEOUS PERENNIALS						
MDL	7	Hemerocallis 'Catherine Woodbury'	Catherine Woodbury Daylily (Soft Pink)	#1	Cont.	Full, well rooted plant, evenly shaped
MDL	7	Hemerocallis 'Hypocrite'	Hypocrite Daylily (Lemon Yellow)	#1	Cont.	Full, well rooted plant, evenly shaped
MDL	7	Hemerocallis 'Summer Wine'	Summer Wine Daylily (Maroon)	#1	Cont.	Full, well rooted plant, evenly shaped
WLC	74	Nepeta faassenii 'Walker's Low'	Walker's Low Catmint	#1	Cont.	Full, well rooted plant, evenly shaped
RS	13	Perovskia atriplicifolia	Russian Sage	#2	Cont.	Full, well rooted plant, evenly shaped

PLANT KEY	QUANTITY	BOTANICAL NAME	COMMON NAME	CONTAINER	SIZE	SPECIFICATION / NOTES
LAWN RESTORATION						
LAWN	1200	Lawn Establishment Area / Grading Area		SY	Cedar Creek Premium Blue Tag Seed Mix (Ph: 888-313-6807)	
	10664	Erosion Matting for sloped seeded areas	see plan for area delineation	SF	EroTex D575 Erosion Control Blanket (or approved equal)	

PLANT KEY	QUANTITY	BOTANICAL NAME	COMMON NAME	CONTAINER	SIZE	SPECIFICATION / NOTES
Hardscape Materials						
	24	AFTFC 6' Tall Concrete Screen Fence	see plan for location	LF	Brick Veneer to Match Building	
	14	Heritage River Gravel Mulch [1.0-1.5" pieces]	1,000 SF	TN	2" depth	
	410	Aluminum Edge Restraint (gravel areas)	Permaloc ProSlide 3/16"x5.5" Black Duraflex Finish	LF		
	1000	Landscape Fabric	SF			
	59	Shredded Hardwood Mulch (3" depth)	6,450 SF	CY	Bank Mulch; apply Preemergent after installation of mulch	
	39	Soil Amendments (2" depths)	6,450 SF	CY		
	33	Pulverized Topsoil (Lawn Area)	10,650 SF	CY		
	39	Pulverized Topsoil (2" over bed areas)	6,450 SF	CY		

*Landscape counts & quantities are provided as a service to the Landscape Contractor; Landscape Contractor is responsible for verifying these counts and quantities in order to provide a complete landscape installation as outlined on this Landscape Master Plan. In the event that a discrepancy occurs between this schedule and the Landscape Master Plan, the Landscape Master Plan- including the graphics and notations depicted therein- shall govern.

Seed Compositions:
Cedar Creek Premium Blue Tag (Ph: 888-313-6807):
10% Mid Atlantic Kentucky Bluegrass
10% Merit Kentucky Bluegrass
20% Boreal Red Fescue
20% Pennant Fine Perennial Ryegrass
10% Atlantis Kentucky Bluegrass
10% Dragon Kentucky Bluegrass
10% Palmer III Fine Perennial Ryegrass
Seed at rate of 3# per 1000 SF

REVISIONS

NO.	DATE	DESCRIPTION
-----	------	-------------

IMC DATE

SHEET TITLE
LANDSCAPE DETAILS, NOTES & SCHEDULES

PROJECT NAME
NAPERVILLE SELF STORAGE
NAPERVILLE ILLINOIS

OWNER
CHRISTOPHER M. URBANCZYK
REG. ARCHITECT
CORPORATE OFFICE
10701 DOW

SCALE
AS SHOWN
DATE
2024.08
NO.
02

PROJECT NUMBER
5259 ILLINOIS ROAD, NORTHBROOK, ILLINOIS 60062
WWW.URBANSCAPEDESIGN.NET (847) 291-9370

PLANTING MATERIALS

DATE
2024.08.01

BY

DATE

MS Michael Snyder
LA Landscape Architecture
Phone: 847.804.6752
www.m.s.l.a.biz

LI.2

PLANT & MATERIAL SCHEDULE

EXHIBIT D