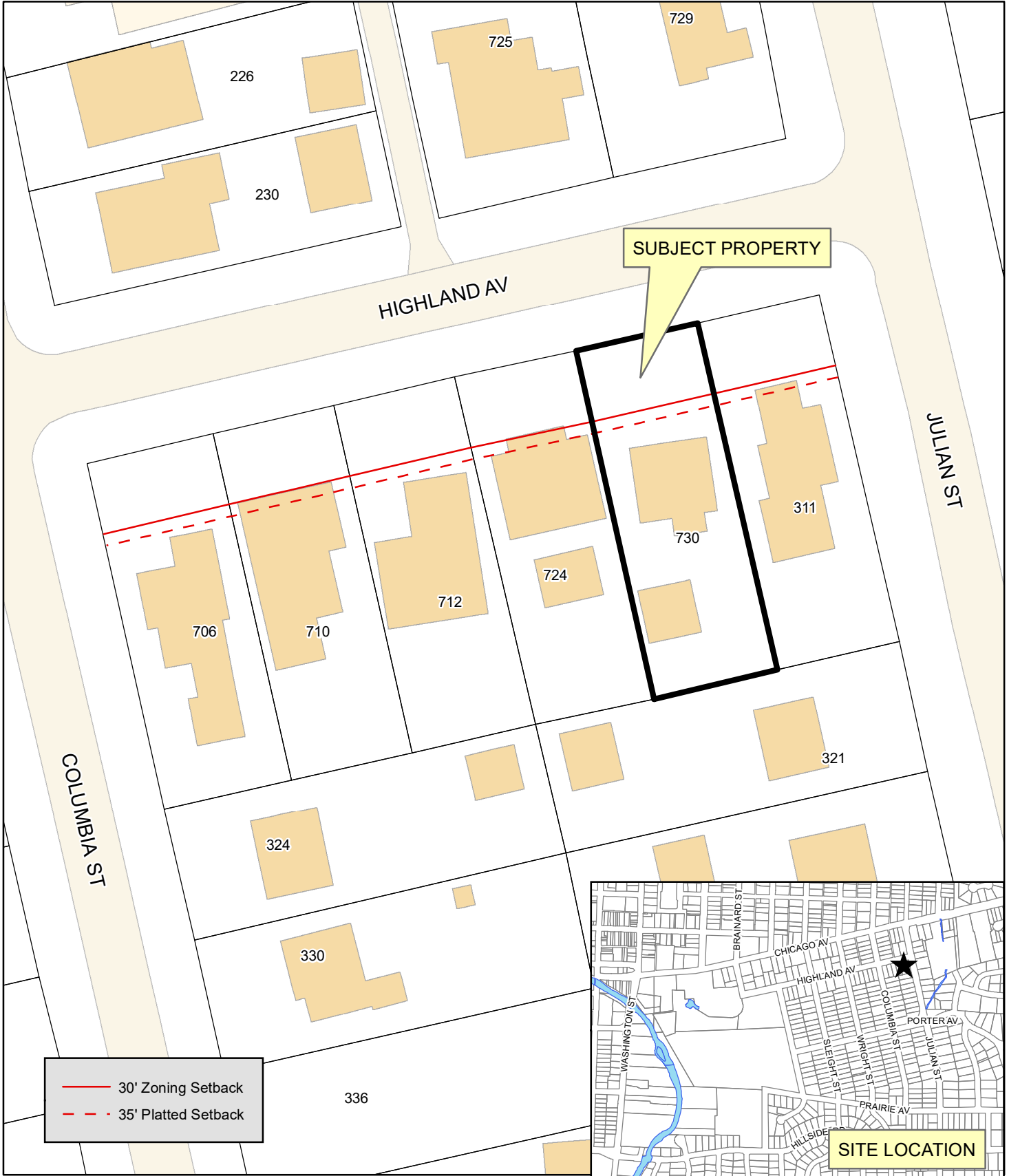


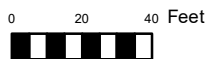
City of Naperville
730 HIGHLAND AVENUE



— 30' Zoning Setback
- - - 35' Platted Setback



Transportation, Engineering and
Development Business Group
Questions Contact (630) 420-6719
www.naperville.il.us
Jan 2018



This map should be used for reference only.
The data is subject to change without notice.
City of Naperville assumes no liability in the use
or application of the data. Reproduction or
redistribution is forbidden without expressed
written consent from the City of Naperville.