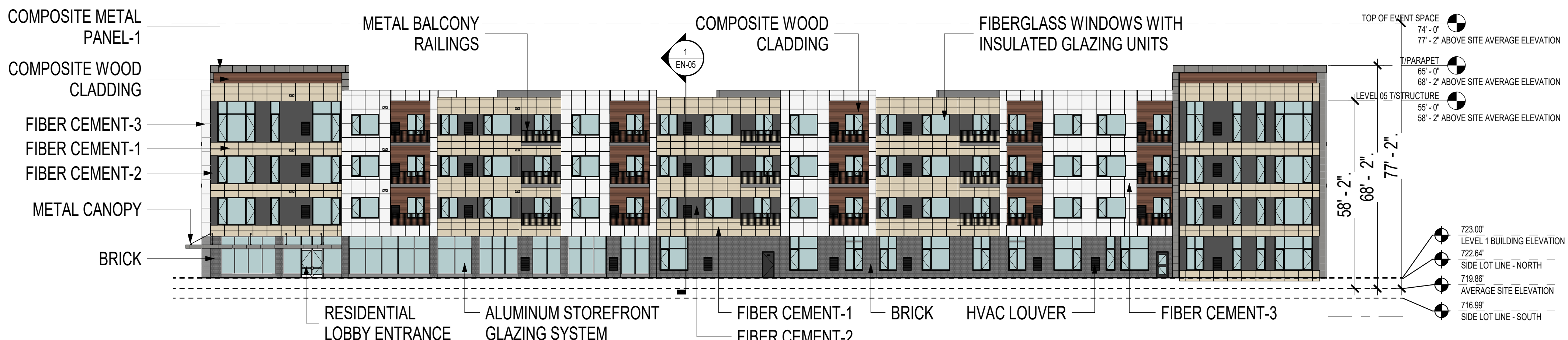
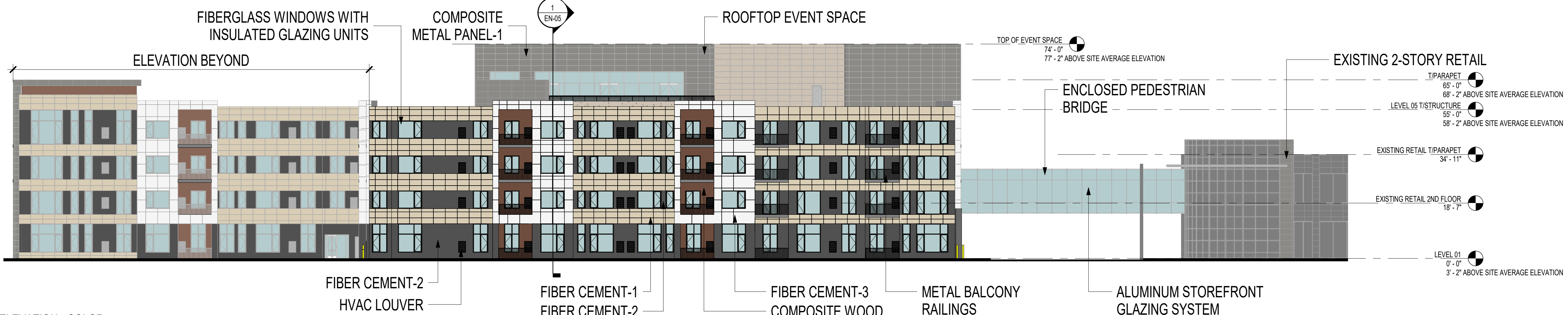


EXTERIOR WALL MATERIALS		
Type	Area	Percentage of Facade
EVENT SPACE		
COMPOSITE METAL PANEL-1	6470 SF	46%
CURTAINWALL SYSTEM	2889 SF	20%
CURTAINWALL SYSTEM - BRIDGE	2282 SF	16%
STOREFRONT - 4'-0"	1788 SF	13%
STOREFRONT - MANUAL	720 SF	5%
EVENT SPACE	14129 SF	
PERIMETER EAST		
COMPOSITE WOOD CLADDING	1188 SF	8%
COMPOSITE WOOD CLADDING (LEVEL 1)	248 SF	2%
FIBER CEMENT CLADDING-1	4732 SF	33%
FIBER CEMENT CLADDING-2	3191 SF	22%
FIBER CEMENT CLADDING-2 (LEVEL 1)	1551 SF	11%
FIBER CEMENT CLADDING-3	3445 SF	24%
PERIMETER EAST	14352 SF	
PERIMETER NORTH		
COMPOSITE METAL PANEL-1	761 SF	3%
COMPOSITE WOOD CLADDING	2363 SF	9%
FIBER CEMENT CLADDING-1	6307 SF	24%
FIBER CEMENT CLADDING-2	2599 SF	10%
FIBER CEMENT CLADDING-2 (LEVEL 1)	253 SF	1%
FIBER CEMENT CLADDING-3	8789 SF	33%
MASONRY (BRICK) VENEER - 8" STUD	2214 SF	8%
STOREFRONT - 5'-0"	3340 SF	13%
PERIMETER NORTH	26587 SF	
PERIMETER SOUTH		
COMPOSITE METAL PANEL-1	997 SF	3%
COMPOSITE WOOD CLADDING	3221 SF	11%
COMPOSITE WOOD CLADDING (LEVEL 1)	685 SF	2%
FIBER CEMENT CLADDING-1	6651 SF	23%
FIBER CEMENT CLADDING-1 (LEVEL 1)	32 SF	0%
FIBER CEMENT CLADDING-2	3483 SF	12%
FIBER CEMENT CLADDING-2 (LEVEL 1)	1726 SF	6%
FIBER CEMENT CLADDING-3	9959 SF	35%
MASONRY (BRICK) VENEER - 8" STUD	802 SF	3%
MASONRY (BRICK) VENEER - 8" STUD	1116 SF	4%
PERIMETER SOUTH	28670 SF	
PERIMETER WEST		
COMPOSITE METAL PANEL-1	512 SF	3%
COMPOSITE WOOD CLADDING	1992 SF	12%
FIBER CEMENT CLADDING-1	3707 SF	23%
FIBER CEMENT CLADDING-1 (LEVEL 1)	119 SF	1%
FIBER CEMENT CLADDING-2	1821 SF	11%
FIBER CEMENT CLADDING-2 (LEVEL 1)	171 SF	1%
FIBER CEMENT CLADDING-3	5413 SF	33%
MASONRY (BRICK) VENEER - 8" STUD	84 SF	1%
MASONRY (BRICK) VENEER - 8" STUD	1383 SF	9%
STOREFRONT - 5'-0"	1106 SF	7%
PERIMETER WEST	16318 SF	
TOTAL FACADE SF	100555 SF	
TOTAL MASONRY SF	5,609SF	5.6%



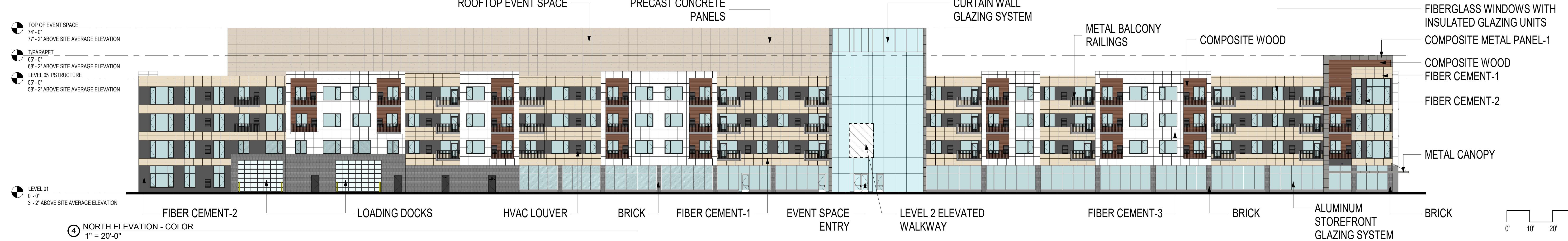
1 WEST ELEVATION - COLOR
1" = 20'-0"



2 EAST ELEVATION - COLOR
1" = 20'-0"



3 SOUTH ELEVATION - COLOR
1" = 20'-0"



4 NORTH ELEVATION - COLOR
1" = 20'-0"

CALAMOS-CITYGATE

CITY PROJECT #19-10000020
NAPERVILLE, IL
01/31/2020

EXTERIOR ELEVATIONS