

WALL SIGNS					
ELEVATION	Area Allowed	Number Allowed	Height Allowed	Proposed Signs	Area Proposed
NORTH					
SOUTH					
EAST					
WEST					
TOTAL					
Notes:					
FREESTANDING SIGNS					
Street		Area Allowed	Height Allowed	Area Proposed	Height Proposed
Notes:					
AWNING					
Allowed - Yes/No		Area Allowed	Area Proposed		
Notes:					
DIRECTIONAL GROUND SIGNS					
Allowed - Yes/No		Area Allowed	Area Proposed		
Notes:					
TEMPORARY SIGNS					
Construction Signs- Yes/No		Banners Allowed- Yes/No	Streamers - Pennants Allowed- Yes/No		
Notes:					
WINDOW SIGNS					
Allowed - Yes/No		Area Allowed	Area Proposed		
Notes:					



Option (A) Revision 4 Permit Rev 5

STORE #1250
1125 Ogden Ave, Naperville, IL 60563



www.iesign.com

since 1984

HELPING OUR CUSTOMERS
SUCCEED FOR 40 YEARS

208-338-9401

6528 SUPPLY WAY / BOISE, ID 83716

Boise's Only

Full Service Sign Company

THIS IS AN UNPUBLISHED DRAWING/DESIGN SUBMITTED FOR YOUR PERSONAL USE IN CONNECTION WITH A PROJECT BEING PLANNED FOR YOU BY IDAHO ELECTRIC SIGNS, INC. AND IS NOT TO BE REPRODUCED, COPIED OR EXHIBITED IN ANY FASHION WITHOUT WRITTEN PERMISSION OF IDAHO ELECTRIC SIGNS, INC.

THE COLORS DEPICTED IN THIS DRAWING ARE TO ASSIST YOU IN VISUALIZING OUR PROPOSAL AND MAY NOT MATCH ACTUAL COLORS USED ON THE FINISHED DISPLAY.

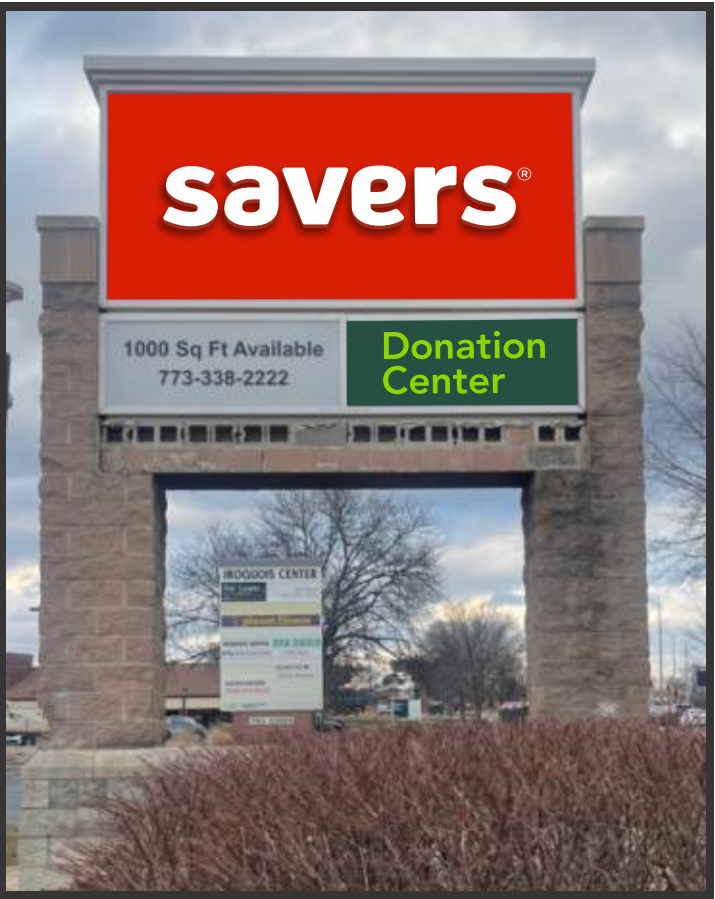
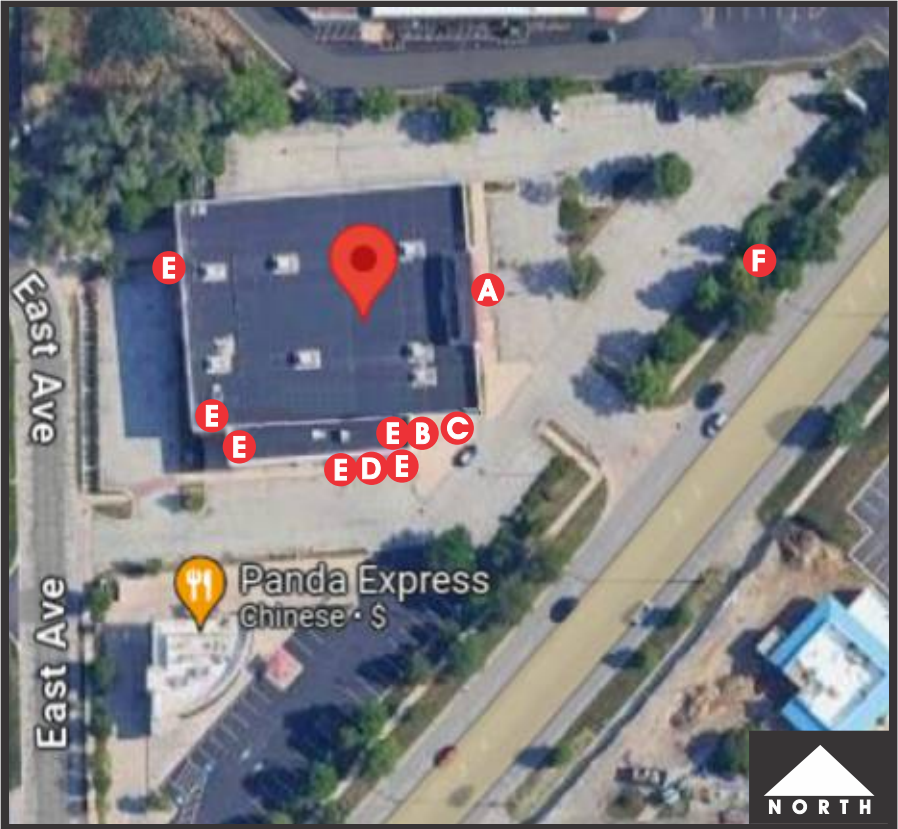
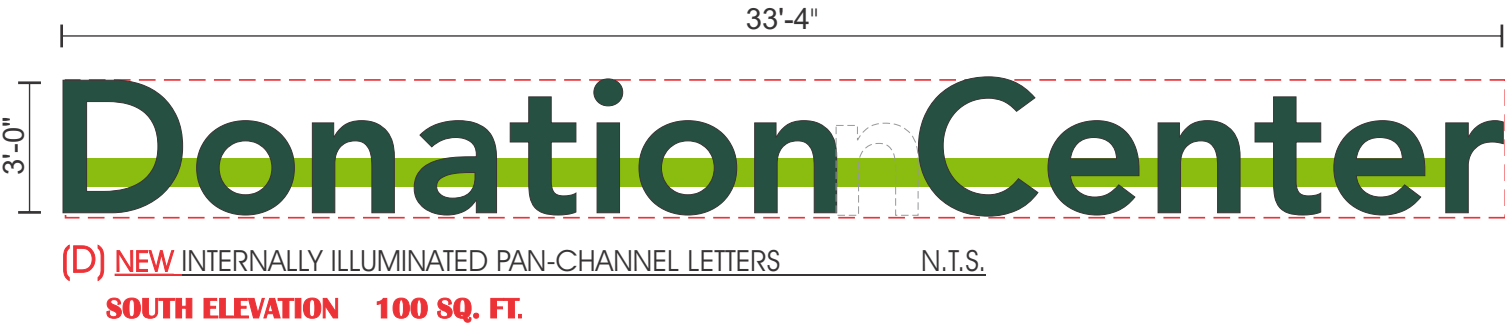
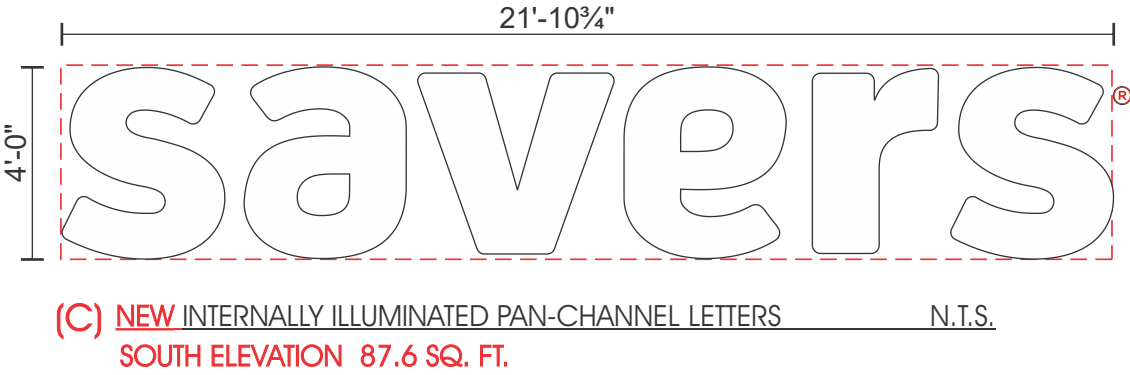
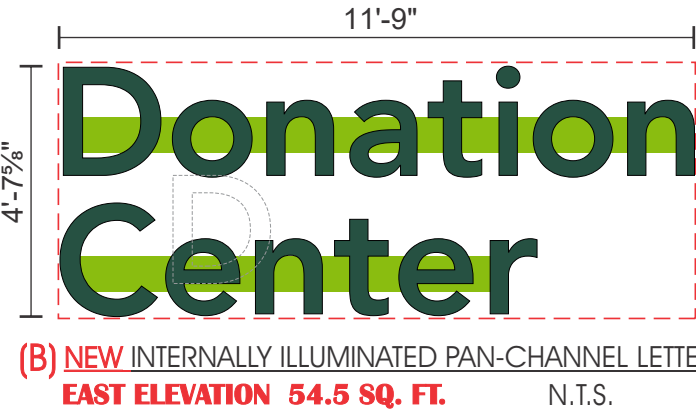
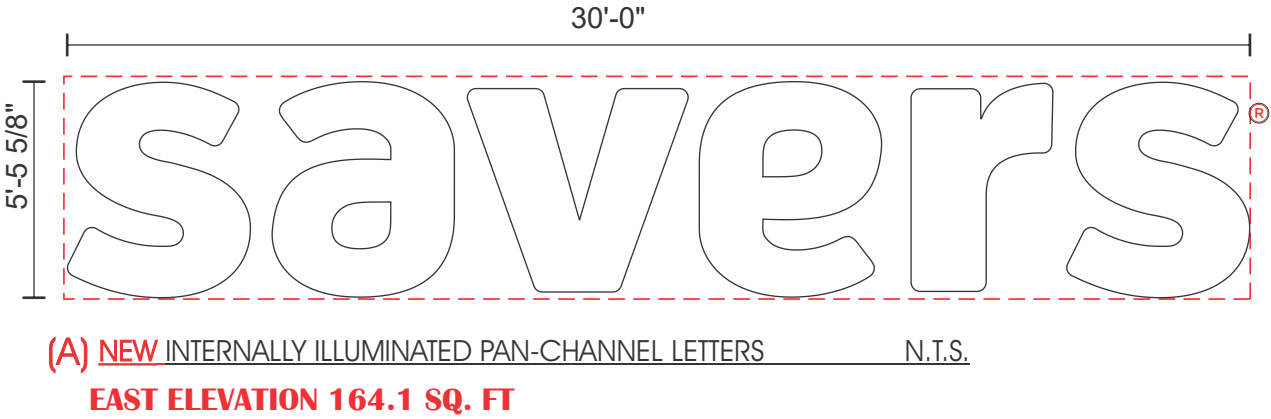
CUSTOMER APPROVAL

DATE

REVISIONS
9-24-24 REV 5 (PERMIT)
ADDED INFORMATION
REQUESTED FOR PERMITS.
ADJUSTED PAINT ACCENT
AND DC TENANT PANELS.
7-10-24 OPT (A) REV 4
MADE PRODUCTION
PRINTS FOR TEMP SIGNS
AND REMOVED THEM
FROM THE PACKAGE

All signs are listed by Underwriters Laboratories (U.L.) and will be installed in accordance with the installation instructions and Article 600 of the National Electric Code

SALES
LACEY
DESIGNER
RICK BREDE
STORE #
1250
RICK'S FILE
SAVERS 1250 NAPPERVILLE IL 2024.PLT
CUSTOMER
SAVERS
LOCATION
NAPPERVILLE IL
DATE
3-12-24
PAGE #
1 OF 11
COPYRIGHT © 2024



(F) REFACE TENANT CABINET ON D/F FREESTANDING SIGN "SAVERS" - PAN-CHANNEL LETTERS N.T.S.

DATE _____

REVISIONS

All signs are listed by Underwriters Laboratories (U.L.) and will be installed in accordance with the installation instructions and Article 600 of the National Electric Code

SALES

LACEY

DESIGNER

RICK BREDE

STORE #

1250

RICK'S FILE

SAVERS 1250
NAPPERVILLE IL 2024.PLT

CUSTOMER

SAVERS

LOCATION

NAPERVILLE IL

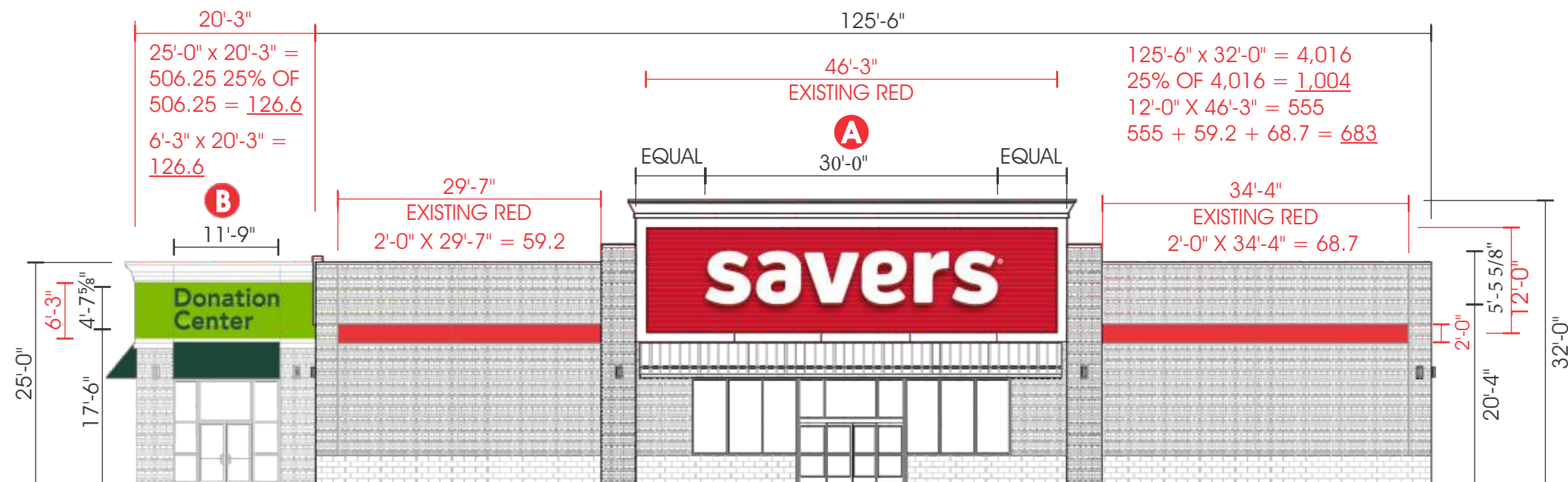
DATE _____

3-12-24

PAGE #

2 OF 11

COPYRIGHT © 2024



PROPOSED SIGNS FOR THE EAST ELEVATION

SCALE 1/16"=1'-0"

DC ACCENT COLOR = 126.6 SQ. FT.
126.6 SQ. FT. ALLOWED

SAVERS ACCENT COLOR = 683 SQ. FT.
1004 SQ. FT. ALLOWED



EXISTING EAST ELEVATION



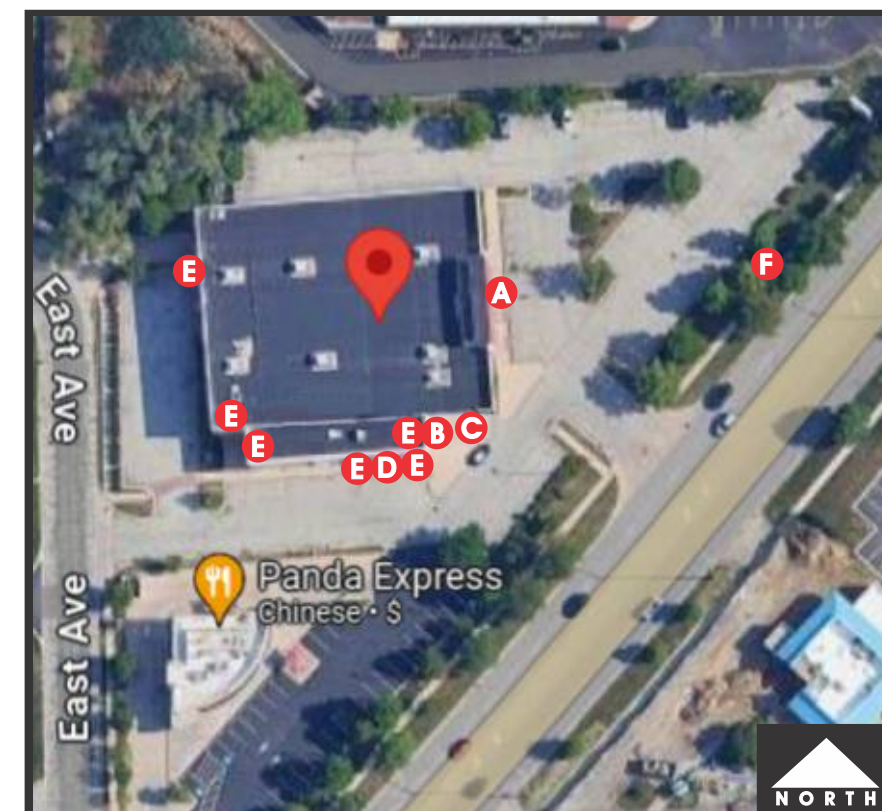
SAMPLE OF PROPOSED "SAVERS" SIGN FOR THE EAST ELEVATION

N.T.S.

FASCIA IS SHOWN PAINTED SHERWIN WILLIAMS
SW 6921 ELECTRIC LIME EAST AND SOUTH
ELEVATIONS ONLY RACEWAY COLORS TO
MATCH THE BUILDING FASCIA SHEWIN
WILLIAMS SW 6921 ELECTRIC LIME



SAMPLE OF PROPOSED DC SIGN - EAST ELEVATION
N.T.S



www.iesign.com



since 1984

HELPING OUR CUSTOMERS
SUCCEED FOR 40 YEARS

208-338-9401

6528 SUPPLY WAY / BOISE, ID 83716

Boise's Only

Full Service Sign Company

THIS IS AN UNPUBLISHED DRAWING/DESIGN SUBMITTED FOR YOUR PERSONAL USE IN CONNECTION WITH A PROJECT BEING PLANNED FOR YOU BY IDAHO ELECTRIC SIGNS, INC. AND IS NOT TO BE REPRODUCED, COPIED OR EXHIBITED IN ANY FASHION WITHOUT WRITTEN PERMISSION OF IDAHO ELECTRIC SIGNS, INC.

THE COLORS DEPICTED IN THIS DRAWING ARE TO ASSIST YOU IN VISUALIZING OUR PROPOSAL AND MAY NOT MATCH ACTUAL COLORS USED ON THE FINISHED DISPLAY.

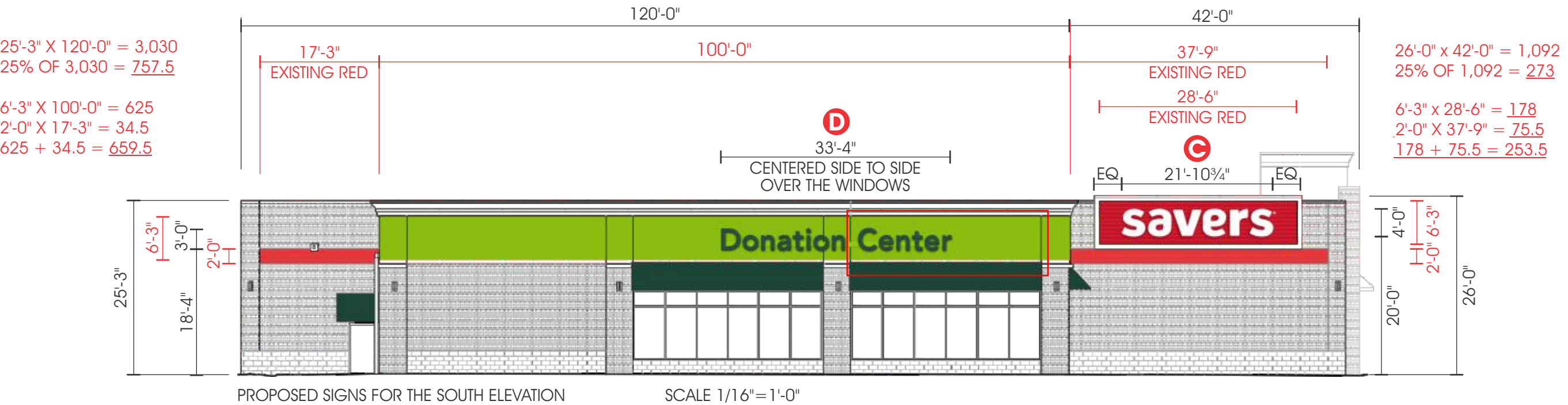
CUSTOMER APPROVAL

DATE

REVISIONS

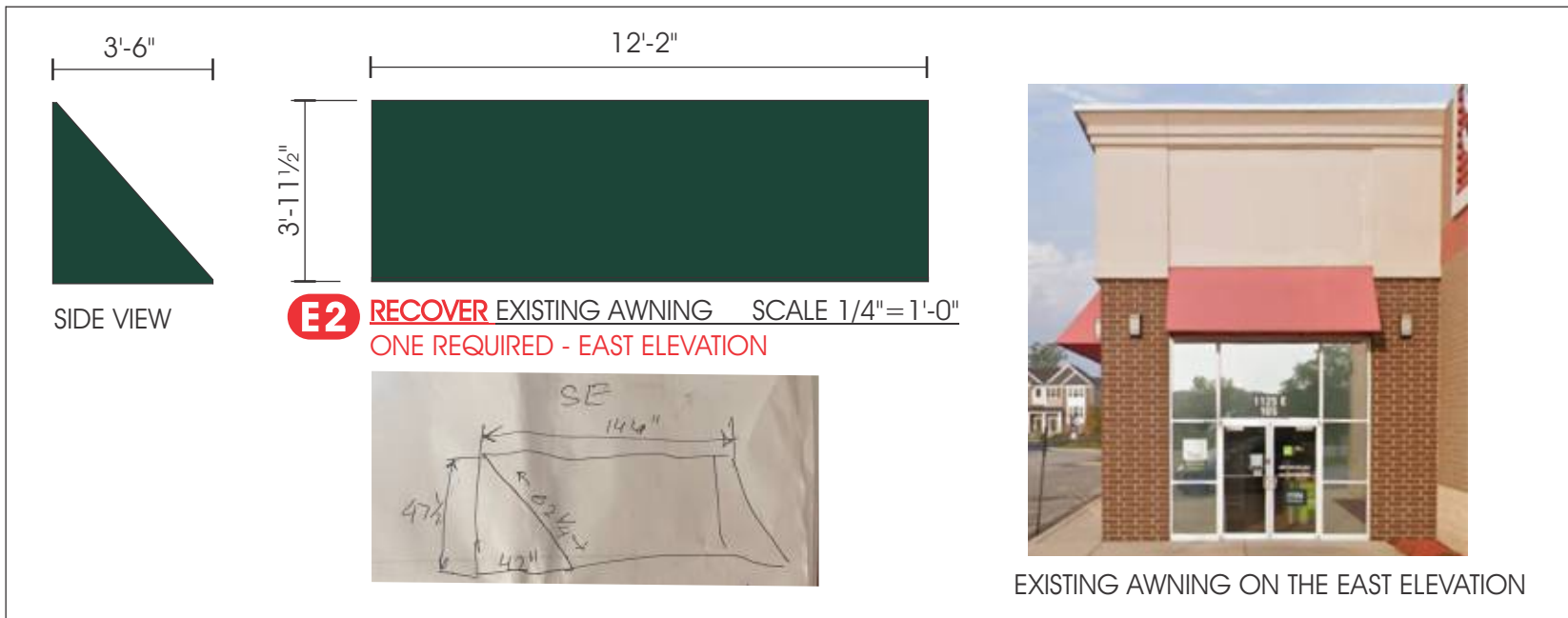
All signs are listed by Underwriters Laboratories (U.L.) and will be installed in accordance with the installation instructions and Article 600 of the National Electric Code

SALES
LACEY
DESIGNER
RICK BREDE
STORE #
1250
RICK'S FILE
SAVERS 1250 NAPPERVILLE IL 2024.PLT
CUSTOMER
SAVERS
LOCATION
NAPPERVILLE IL
DATE
3-12-24
PAGE #
3 OF 11
COPYRIGHT © 2024





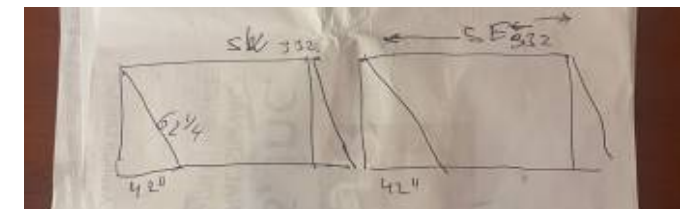
E1 RECOVER EXISTING AWNINGS
TWO REQUIRED FOR THE SOUTH ELEVATION



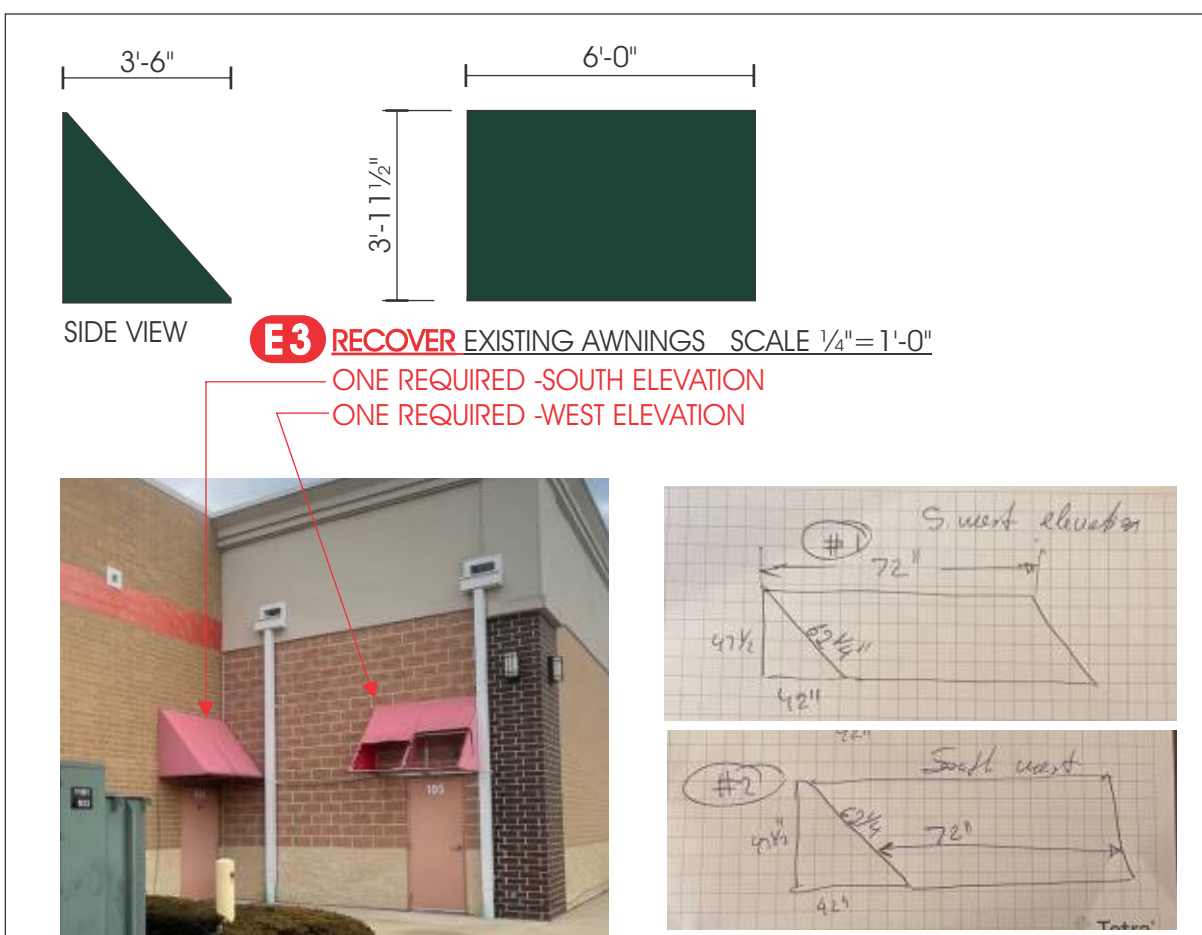
EXISTING AWNING ON THE EAST ELEVATION



EXISTING AWNINGS ON THE SOUTH ELEVATION



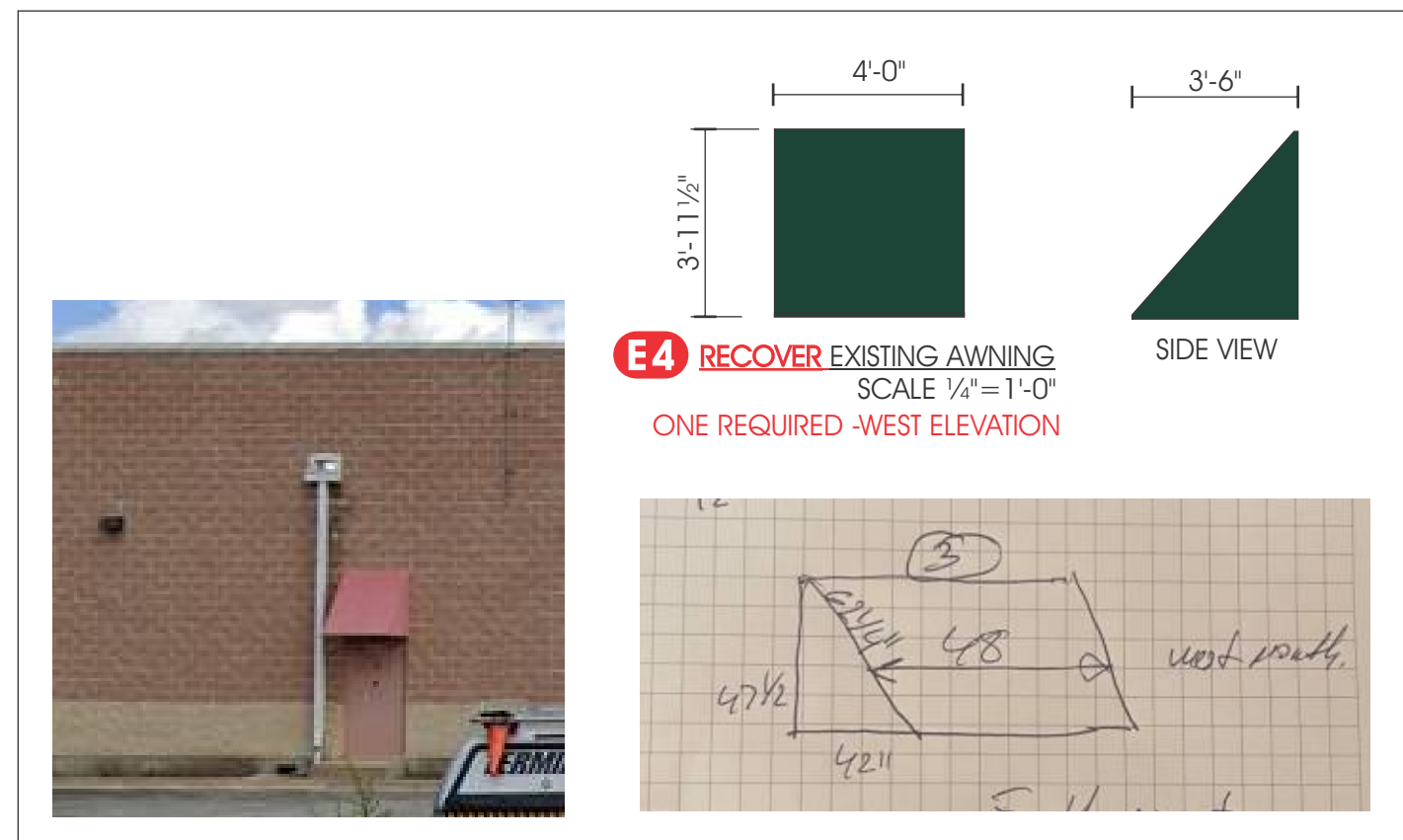
REMOVE 4'-0" X 12'-0" AND 4'-0" X 6'-0" AWNINGS FROM THE NORTH ELEVATION



E3 RECOVER EXISTING AWNINGS SCALE 1/4"=1'-0"

— ONE REQUIRED -SOUTH ELEVATION

— ONE REQUIRED -WEST ELEVATION



E4 RECOVER EXISTING AWNING
SCALE 1/4" = 1'-0"
ONE REQUIRED -WEST ELEVATION

www.iesign.com



HELPING OUR CUSTOMERS
SUCCEED FOR 40 YEARS

208-338-9401

6528 SUPPLY WAY / BOISE, ID 83716

Boise's Only
Full Service Sign Company

THIS IS AN UNPUBLISHED DRAWING/DESIGN SUBMITTED FOR YOUR PERSONAL USE IN CONNECTION WITH A PROJECT BEING PLANNED FOR YOU BY IDAHO ELECTRIC SIGNS, INC. AND IS NOT TO BE REPRODUCED, COPIED OR EXHIBITED IN ANY FASHION WITHOUT WRITTEN PERMISSION OF IDAHO ELECTRIC SIGNS, INC.

THE COLORS DEPICTED IN THIS DRAWING ARE TO ASSIST YOU IN VISUALIZING OUR PROPOSAL AND MAY NOT MATCH ACTUAL COLORS USED ON THE FINISHED DISPLAY.

CUSTOMER APPROVAL

DATE

REVISIONS

All signs are listed by Underwriters Laboratories (U.L.) and will be installed in accordance with the installation instructions and Article 600 of the National Electric Code

SALES

LACEY

DESIGNER

RICK BREDE

STORE #

1250

RICK'S FILE

SAVERS 1250
NAPPERVILLE IL 2024.PLT

CUSTOMER

SAVERS

LOCATION

NAPPERVILLE IL

DATE

3-12-24

PAGE #

6 OF 11

COPYRIGHT © 2024

30'-0"

5'-5 5/8"

SAVERS® I₆

A NEW INTERNALLY ILLUMINATED PAN-CHANNEL LETTERS

SCALE 1/4"+1'-0"

EAST ELEVATION 164.1 SQ. FT

NOTES:

PAN-CHANNEL LETTERS:

FACES-

3/16" WHITE ACRYLIC.

RETURNS-

5" .040 PRE-FINISHED ALUMINUM. HUNTER RED EXTERIOR AND WHITE INTERIOR.

BACKS-

PRE-FINISHED WHITE .080 ALUMINUM.

RETAINERS-

1" RED TRIM CAP.

ILLUMINATION-

PRINCIPLE WHITE LED QWIK MOD 3 LIGHTING SYSTEM.

TRADEMARK- (NON-ILLUMINATED)

ROUTED FROM ACRYLIC OVERLAID WITH CARDINAL RED (220-53) VINYL.

FLUSH MOUNTED TO THE WALL.

GENERAL INFORMATION-

- ALL US SIGNS AND COMPONENTS ARE TO BE UL LISTED.

www.iesign.com



HELPING OUR CUSTOMERS
SUCCEED FOR 40 YEARS

208-338-9401

6528 SUPPLY WAY / BOISE, ID 83716

Boise's Only
Full Service Sign Company

THIS IS AN UNPUBLISHED DRAWING/DESIGN SUBMITTED FOR YOUR PERSONAL USE IN CONNECTION WITH A PROJECT BEING PLANNED FOR YOU BY IDAHO ELECTRIC SIGNS, INC. AND IS NOT TO BE REPRODUCED, COPIED OR EXHIBITED IN ANY FASHION WITHOUT WRITTEN PERMISSION OF IDAHO ELECTRIC SIGNS, INC.

THE COLORS DEPICTED IN THIS DRAWING ARE TO ASSIST YOU IN VISUALIZING OUR PROPOSAL AND MAY NOT MATCH ACTUAL COLORS USED ON THE FINISHED DISPLAY.

CUSTOMER APPROVAL

DATE

REVISIONS

All signs are listed by Underwriters Laboratories (U.L.) and will be installed in accordance with the installation instructions and Article 600 of the National Electric Code

SALES

LACEY

DESIGNER

RICK BREDE

STORE #

1250

RICK'S FILE

SAVERS 1250
NAPPERVILLE IL 2024.PLT

CUSTOMER

SAVERS

LOCATION

NAPPERVILLE IL

DATE

3-12-24

PAGE #

7 OF 11

COPYRIGHT © 2024

NOTES:

FACES:
3/16" WHITE ACRYLIC. OVERLAID WITH DIGITALLY PRINTED DARK GREEN PMS 567 TRANSLUCENT VINYL.

RETURNS:
5" .040 PRE-FINISHED ALUMINUM. BLACK EXTERIOR AND WHITE INTERIOR.

BACKS:
PRE-FINISHED WHITE .063 ALUMINUM.

RETAINERS:
1" BLACK TRIM CAP.

ILLUMINATION:
PRINCIPLE WHITE LED QWIK MOD 3 LIGHTING SYSTEM.

RACEWAYS:
FABRICATED FROM ALUMINUM AND PAINTED SHERWIN WILLIAMS SW 6921 ELECTRIC LIME TO APPROXIMATE THE PAINTED WALL COLOR.

- ALL US SIGNS AND COMPONENTS ARE TO BE UL / CUL LISTED.

www.iesign.com

since 1984

HELPING OUR CUSTOMERS
SUCCEED FOR 40 YEARS

208-338-9401

6528 SUPPLY WAY / BOISE, ID 83716

Boise's Only

Full Service Sign Company

THIS IS AN UNPUBLISHED DRAWING/DESIGN
SUBMITTED FOR YOUR PERSONAL USE IN
CONNECTION WITH A PROJECT BEING
PLANNED FOR YOU BY IDAHO ELECTRIC
SIGNS, INC. AND IS NOT TO BE REPRODUCED,
COPIED OR EXHIBITED IN ANY FASHION
WITHOUT WRITTEN PERMISSION OF
IDAHO ELECTRIC SIGNS, INC.

THE COLORS DEPICTED IN THIS DRAWING
ARE TO ASSIST YOU IN VISUALIZING OUR
PROPOSAL AND MAY NOT MATCH ACTUAL
COLORS USED ON THE FINISHED DISPLAY.

CUSTOMER APPROVAL

DATE

REVISIONS

All signs are listed by Underwriters
Laboratories(U.L.) and will be
installed in accordance with the
installation instructions and Article
600 of the National Electric Code

SALES

LACEY

DESIGNER

RICK BREDE

STORE #

1250

RICK'S FILE

SAVERS 1250
NAPPERVILLE IL 2024.PLT

CUSTOMER

SAVERS

LOCATION

NAPPERVILLE IL

DATE

3-12-24

PAGE #

8 OF 11

COPYRIGHT © 2024

NOTES:

PAN-CHANNEL LETTERS:

FACES-

3/16" WHITE ACRYLIC.

RETURNS-

5" .040 PRE-FINISHED ALUMINUM. HUNTER RED EXTERIOR AND WHITE INTERIOR.

BACKS-

PRE-FINISHED WHITE .080 ALUMINUM.

RETAINERS-

1" RED TRIM CAP.

ILLUMINATION-

PRINCIPLE WHITE LED QWIK MOD 3 LIGHTING SYSTEM.

TRADEMARK- (NON-ILLUMINATED)

ROUTED FROM ACRYLIC OVERLAID WITH CARDINAL RED (220-53) VINYL.

FLUSH MOUNTED TO THE WALL.

GENERAL INFORMATION-

- ALL US SIGNS AND COMPONENTS ARE TO BE UL LISTED.

www.iesign.com



HELPING OUR CUSTOMERS
SUCCEED FOR 40 YEARS

208-338-9401

6528 SUPPLY WAY / BOISE, ID 83716

Boise's Only
Full Service Sign Company

THIS IS AN UNPUBLISHED DRAWING/DESIGN SUBMITTED FOR YOUR PERSONAL USE IN CONNECTION WITH A PROJECT BEING PLANNED FOR YOU BY IDAHO ELECTRIC SIGNS, INC. AND IS NOT TO BE REPRODUCED, COPIED OR EXHIBITED IN ANY FASHION WITHOUT WRITTEN PERMISSION OF IDAHO ELECTRIC SIGNS, INC.

THE COLORS DEPICTED IN THIS DRAWING ARE TO ASSIST YOU IN VISUALIZING OUR PROPOSAL AND MAY NOT MATCH ACTUAL COLORS USED ON THE FINISHED DISPLAY.

CUSTOMER APPROVAL

DATE

REVISIONS

All signs are listed by Underwriters Laboratories (U.L.) and will be installed in accordance with the installation instructions and Article 600 of the National Electric Code

SALES

LACEY

DESIGNER

RICK BREDE

STORE #

1250

RICK'S FILE

SAVERS 1250
NAPPERVILLE IL 2024.PLT

CUSTOMER

SAVERS

LOCATION

NAPPERVILLE IL

DATE

3-12-24

PAGE #

9 OF 11

COPYRIGHT © 2024

NOTES:

FACES:

3/16" WHITE ACRYLIC OVERLAID WITH DIGITALLY PRINTED DARK GREEN PMS 567 TRANSLUCENT VINYL.

RETURNS:

5" .040 PRE-FINISHED ALUMINUM. BLACK EXTERIOR AND WHITE INTERIOR.

BACKS:

PRE-FINISHED WHITE .063 ALUMINUM.

RETAINERS:

1" BLACK TRIM CAP.

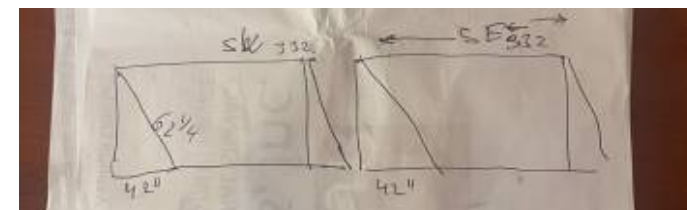
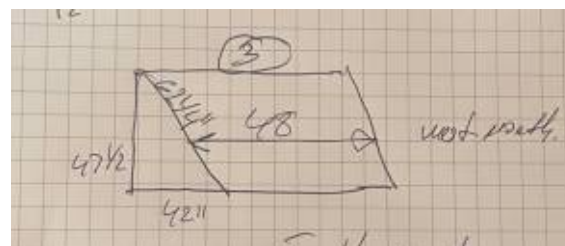
ILLUMINATION:

PRINCIPLE WHITE LED QWIK MOD 3 LIGHTING SYSTEM.

RACEWAYS:

FABRICATED FROM ALUMINUM AND PAINTED SHERWIN WILLIAMS SW 6921 ELECTRIC LIME TO APPROXIMATE THE PAINTED WALL COLOR.
ADJUST SIZE HEIGHT OF RACEWAYS AS NEEDED TO WORK WITH LARGER SIZE LETTERS

- ALL US SIGNS AND COMPONENTS ARE TO BE UL / CUL LISTED.



VERIFY AWNING COVER ATTACHMENT METHOD.

