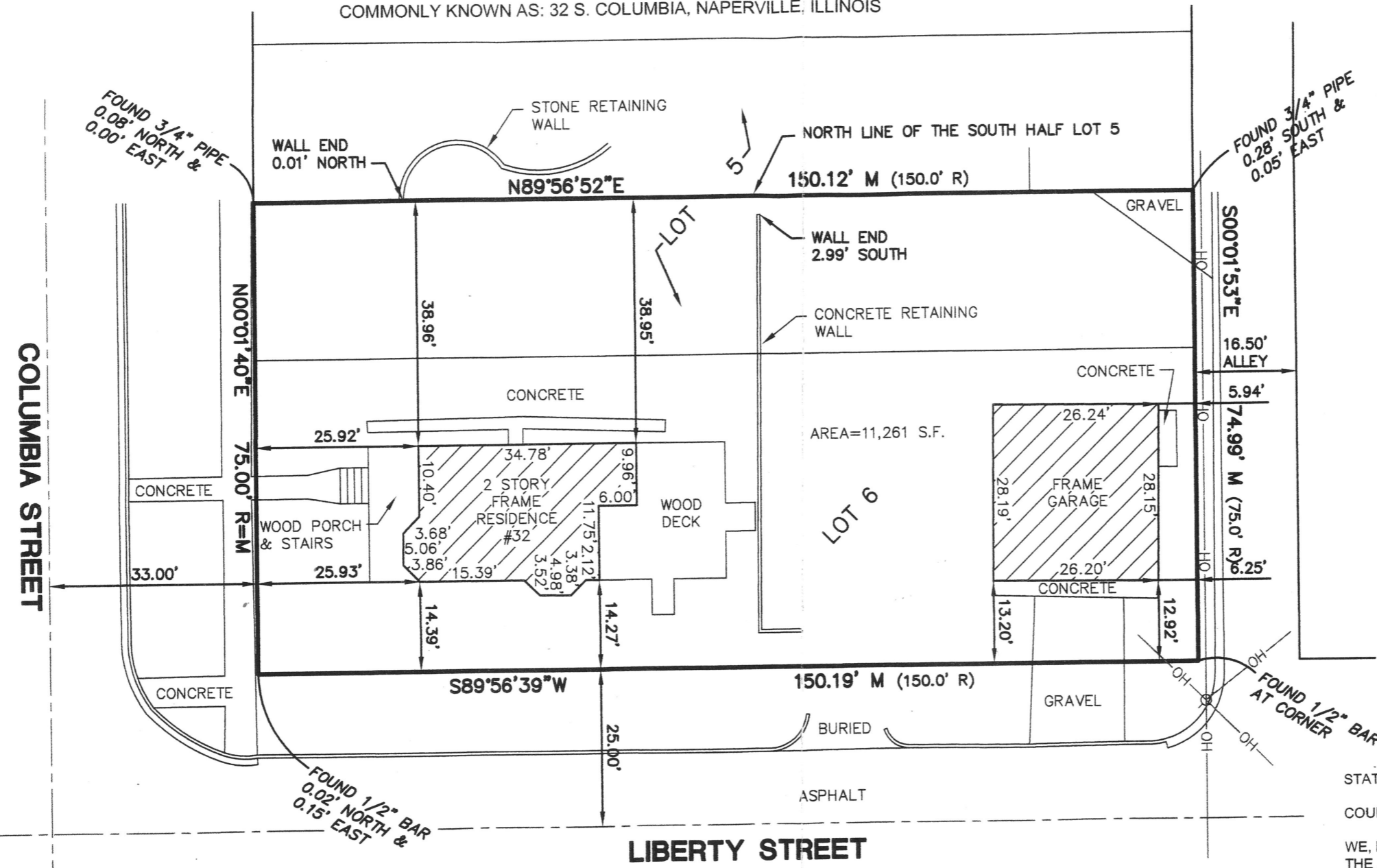


# PLAT OF SURVEY

OF

LOT 6 AND THE SOUTH HALF OF LOT 5 IN BLOCK 4 IN SLEIGHT'S ORCHARD ADDITION TO NAPERVILLE, IN SECTION 18, TOWNSHIP 38 NORTH, RANGE 10 EAST OF THE THIRD PRINCIPAL MERIDIAN, ACCORDING TO THE PLAT THEREOF RECORDED OCTOBER 23, 1905 AS DOCUMENT 85886, IN DUPAGE COUNTY, ILLINOIS.

COMMONLY KNOWN AS: 32 S. COLUMBIA, NAPERVILLE, ILLINOIS



SCALE: 1" = 20'  
BASIS OF BEARING - ASSUMED

### SURVEYOR'S CERTIFICATE

STATE OF ILLINOIS )  
                                  SS  
COUNTY OF DU PAGE)

WE, INTECH CONSULTANTS, INC. HEREBY STATE THAT WE HAVE SURVEYED THE ABOVE DESCRIBED PROPERTY AND THE PLAT HEREON DRAWN IS A CORRECT REPRESENTATION OF THE SAME.

DATED THIS 23<sup>RD</sup> DAY OF SEPTEMBER A.D., 20 15.

*Mark S. Stamac*  
ILLINOIS PROFESSIONAL LAND SURVEYOR NO. 35-2587  
MY LICENSE EXPIRES/RENEWS 11-30-2016



### ABBREVIATIONS

M = MEASURED DIMENSION  
R = RECORD DIMENSION

THIS PROFESSIONAL SERVICE CONFORMS TO THE CURRENT ILLINOIS MINIMUM STANDARD FOR A BOUNDARY SURVEY

ORDERED BY DCWGPCB

NOTE: COMPARE ALL POINTS BEFORE BUILDING AND REPORT ANY DIFFERENCE AT ONCE. EASEMENTS AND BUILDING LINES INDICATED ARE TAKEN FROM ORIGINAL RECORDED SUBDIVISION PLAT. FOR SUBSEQUENT EASEMENTS AND BUILDING LINES ADDED, ALTERED, OR NOT DEPICTED UPON RECORDED SUBDIVISION PLAT, REFER TO TITLE POLICY, DEED OR INSTRUMENT CREATING SAME.

## INTECH CONSULTANTS, INC.

1989 UNIVERSITY LANE, SUITE D    **ENGINEERS - SURVEYORS**  
LISLE, ILLINOIS 60532  
PHONE: 630-964-5656    ILLINOIS REGISTRATION No. 184-001040

PREPARED: 9-23-15

JOB No.: 6980