

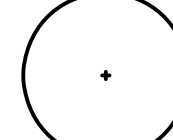
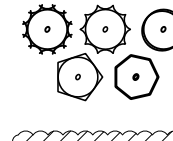
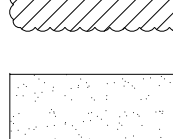
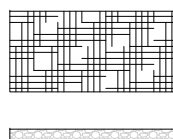
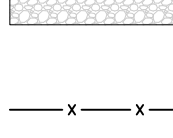
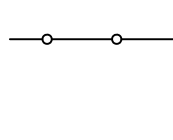


GENERAL NOTES

1. Verify site conditions and information on drawings. Promptly report any concealed conditions, mistakes, discrepancies or deviations from the information shown in the Contract Documents. The Owner is not responsible for unauthorized changes or extra work required to correct unreported discrepancies.
2. Secure and pay for permits, fees and inspections necessary for the proper execution of this work. Comply with codes applicable to this work.
3. Do not locate plants within 10' of utility structures. Do not locate plants within 5' horizontally of underground utility lines.
4. Plants and other materials are quantified and summarized for the convenience of the owner and jurisdictional agencies only. Confirm and install sufficient quantities to complete the work as drawn. No additional payments will be made for materials required to complete the work as drawn.
5. Refer to specifications for additional conditions, standards and notes.

PLANTING NOTES

1. Seed limit line is approximate. Seed to limits of grading and disturbance. Contractor responsible for restoration of any unauthorized disruption outside of designated construction area.
2. Contractor responsible for erosion control in all seeded areas.
3. Tree mulch rings in turf areas are shredded hardwood mulch, 5 foot diameter, typical. Contractor shall provide a mulch ring around all existing trees within the limit of work. Remove all existing grass from area to be mulched and provide a typical v-trench edge.
4. Bedlines are to be spade cut to a minimum depth of 3 inches unless otherwise shown on the plans. Curved bedlines are to be smooth and not segmented. Planting beds and islands are to be mulched with decorative landscape stone.
5. Trees shall be installed a minimum of five (5) feet horizontally from underground electrical feeders, sanitary sewers, sanitary services, water mains, and water services. Trees shall be installed a minimum of ten (10) feet horizontally from utility structures and appurtenances, including, but not limited to, manholes, valve vaults, valve boxes and fire hydrants. No trees, shrubs or obstacles will be allowed 10' in front of, 5' on the sides, and 7' to the rear of the electrical transformer.
6. Within the parking lot, shrubs shall be no greater than thirty inches (30") in height and the branches of trees shall start no less than six feet (6') above the pavement.

PLANTING LEGEND

-  Deciduous Tree, typical. See detail for installation.
-  Shrub, typical. See detail for installation.
-  Perennial, typical. See detail for installation.
-  Turf seed and erosion control blanket, typical.
-  Native seed mix, typical. See detail for installation.
-  Decorative landscape stone
-  Chain link fence
-  Ornamental metal fence



22 E. Chicago Avenue  
 Suite 200  
 Naperville, IL 60540  
 T 630.961.1787  
 F 630.961.9925  
 hitchcockdesigngroup.com

PREPARED FOR

**Burgess  
 Commercial  
 Real Estate**

1585 Beverly Court  
 Aurora, Illinois 60502

PROJECT

**Sunbelt Rental  
 Property**

Naperville, Illinois

ISSUED

June 05, 2023

REVISIONS

No	Date	Issue
1	3/16/2023	Revision 1
2	6/5/2023	Revision 2

CHECKED BY MPW      DRAWN BY DSP

SHEET TITLE

**Landscape Plan**

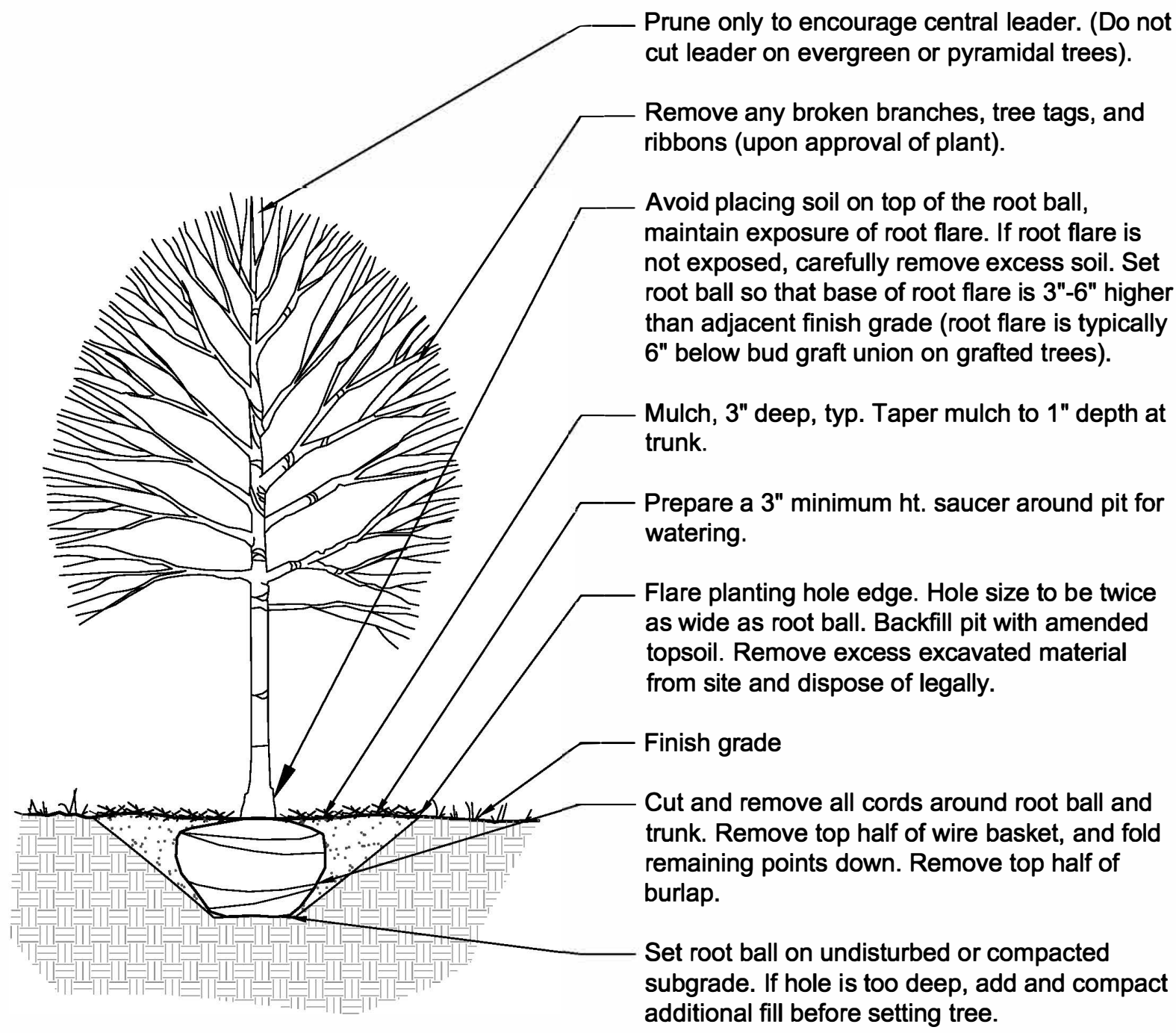
SCALE IN FEET  
 1" = 30'

0' 15' 30' 90'

NORTH      SHEET NUMBER

**L1.0**

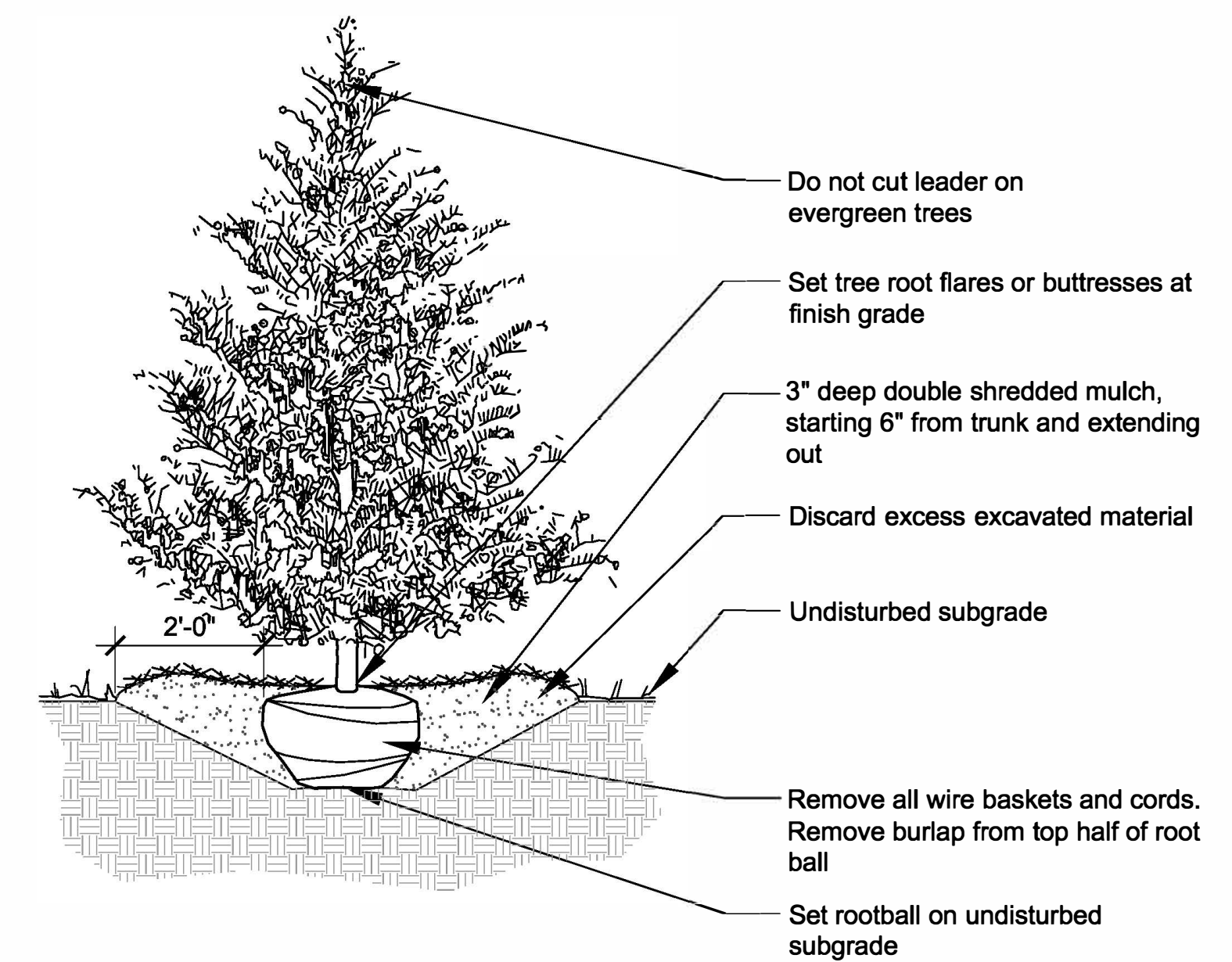
©2020 Hitchcock Design Group



**1 Deciduous Tree Planting**

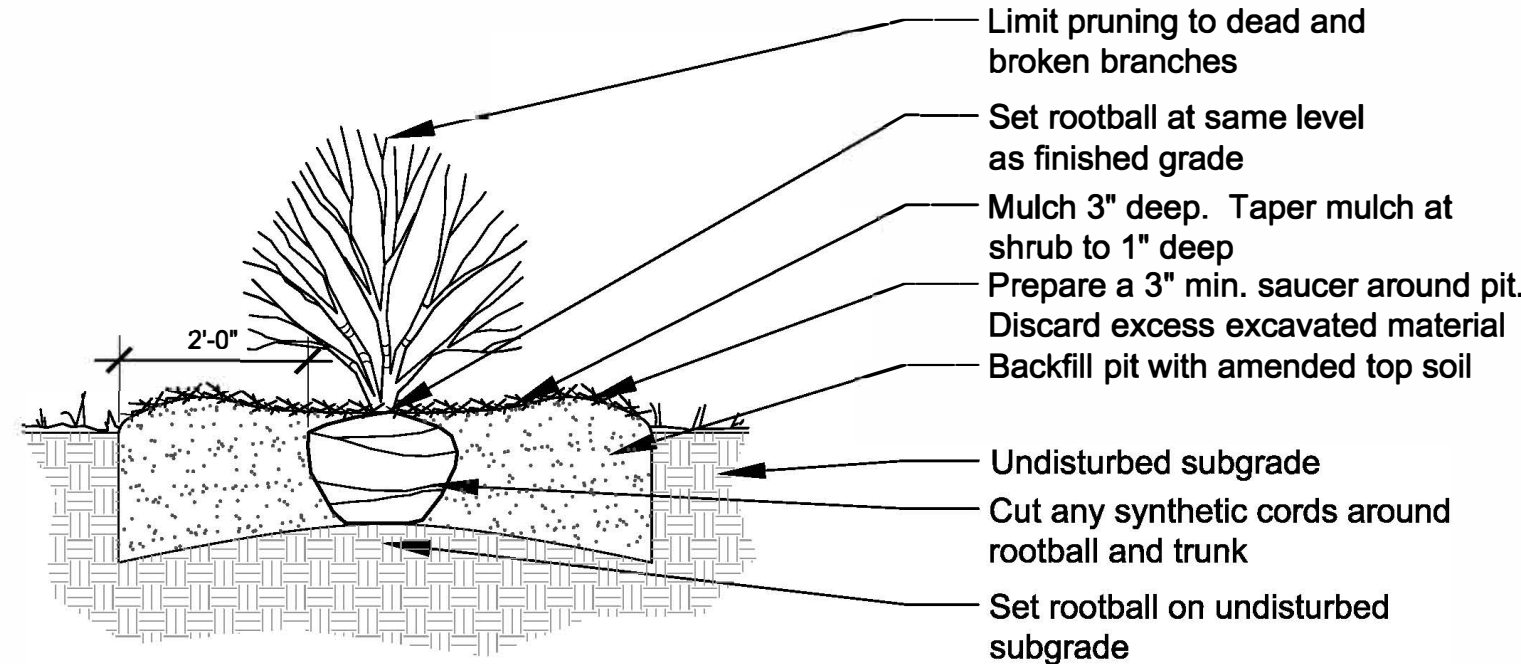
Scale: 1/2" = 1'-0"

d-veg-tree-dec



**2 Evergreen Tree Planting**

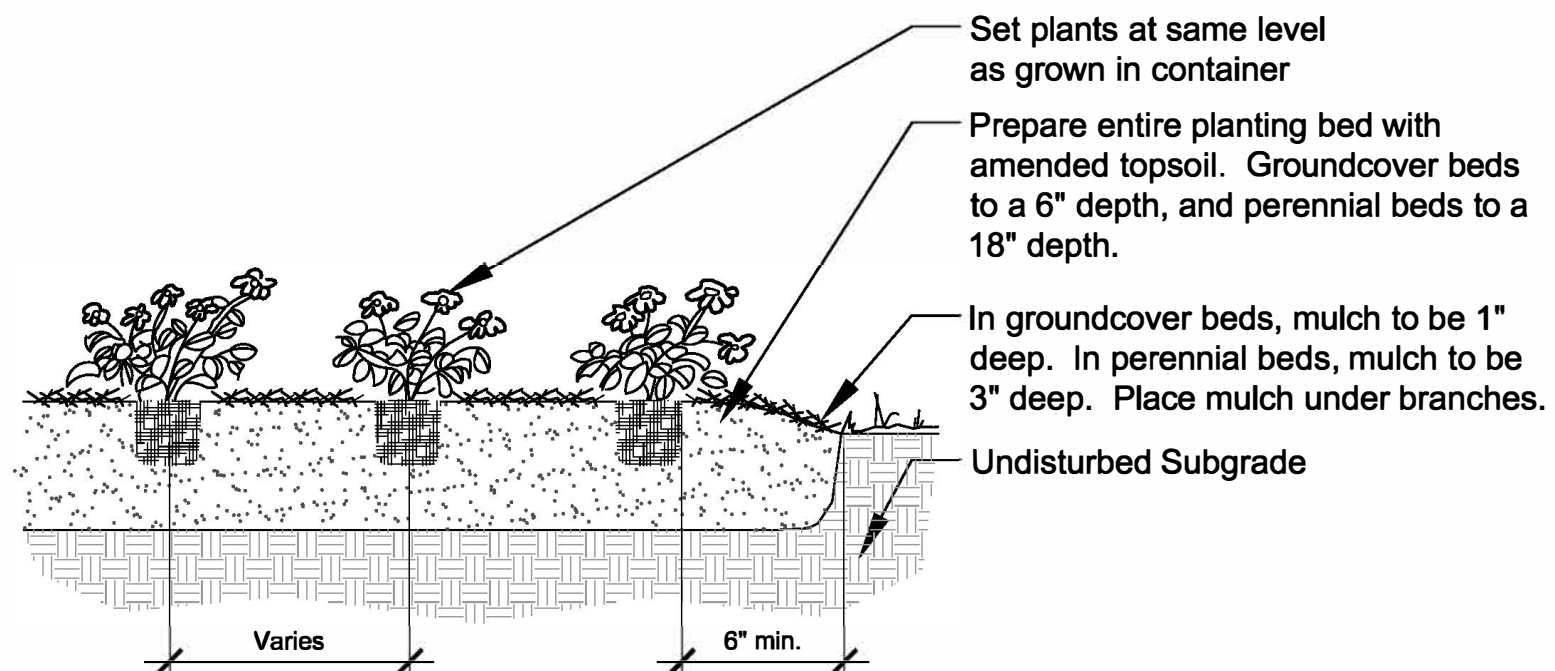
1/2" = 1'-0"



**3 Shrub Planting**

Scale: 1/2" = 1'-0"

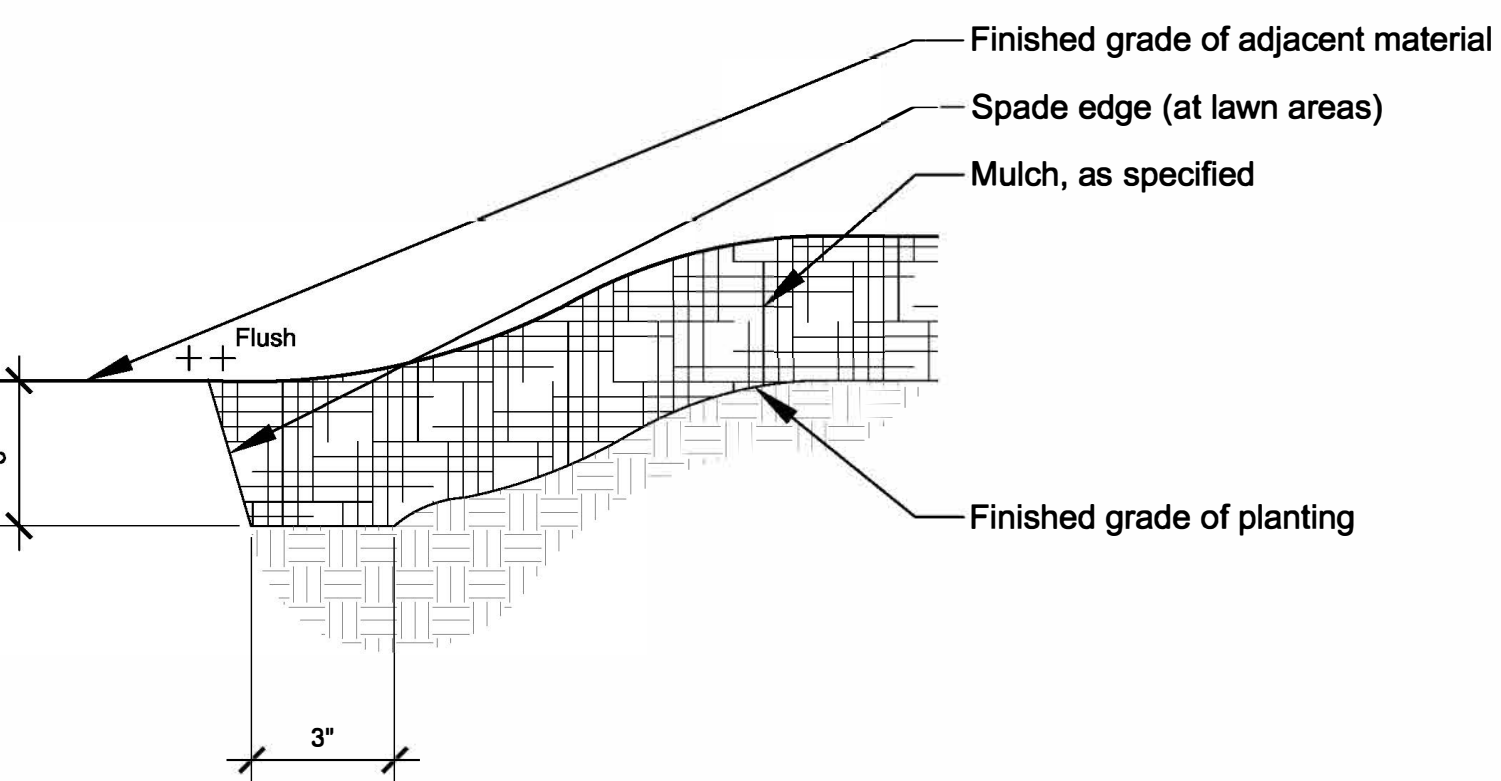
d-veg-shrub



**4 Perennial and Groundcover Planting**

Scale: 1/2" = 1'-0"

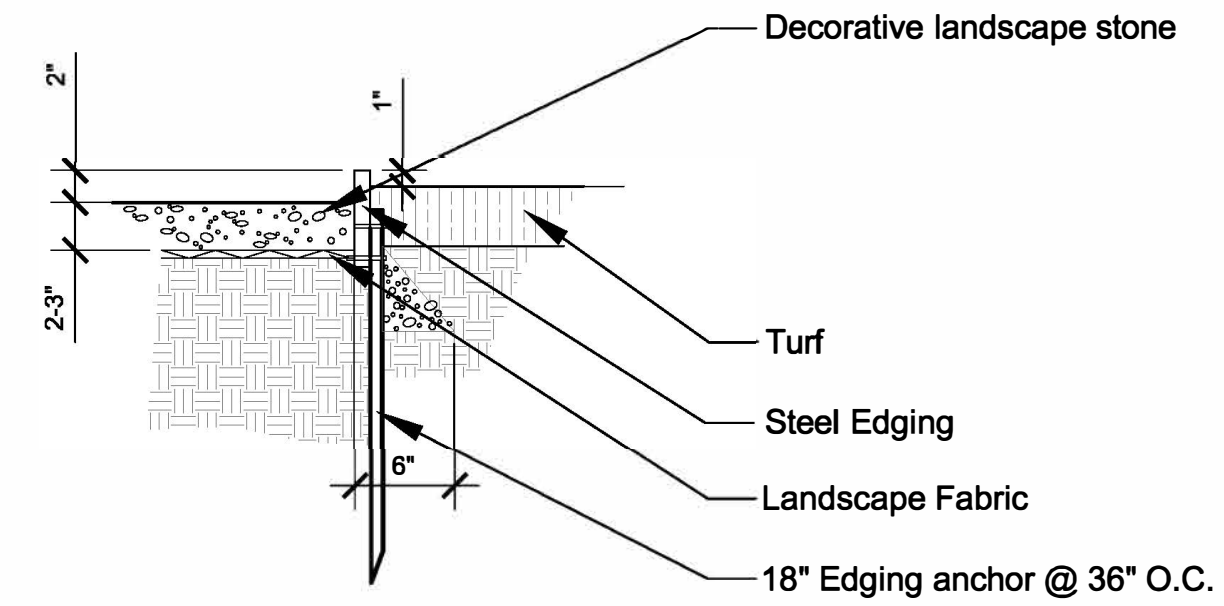
d-veg-per-gr



**5 Planting Bed/ Mulch Ring Edging detail**

d-mulch trench

3" = 1'-0"



**6 Stone Edge Restraint / Stone Mulch**

1" = 1'-0"

d-steel-edge

**PLANT MATERIALS LIST**

Code	Botanical Name	Common Name	Size	Qty
<b>Shade Trees</b>				
GTK2.5	Gleditsia triacanthos var. inermis 'Skyline'	Skyline Thornless Honeylocust	2 1/2" C	8
PMT2.5	Platanus x acerifolia 'Morton Circle'	Exclamation! London Planetree	2 1/2" C	4
UMS2.5	Ulmus 'Morton Stalwart'	Commendation Elm	2 1/2" C	8
<b>Evergreen Trees</b>				
JCA.06	Juniperus chinensis 'Fairview'	Fairview Chinese Juniper	5' HT	40
<b>Deciduous Shrubs</b>				
ARM24	Aronia melanocarpa 'Autumn Magic'	Autumn Magic Black Chokeberry	24" HT	8
HQU24	Hydrangea quercifolia "	Oakleaf hydrangea	24" HT	12
RHG24	Rhus aromatica 'Gro-Low'	Gro-Low Fragrant Sumac	24" HT	13
RKN24	Rosa 'Knockout'	Knockout Rose	24" HT	10
SBT24	Spiraea betulifolia 'Tor'	Tor Birchleaf Spirea	24" HT	3
SYK24	Syringa patula 'Miss Kim'	Miss Kim Manchurian Lilac	24" HT	13
<b>Evergreen Shrubs</b>				
JSG24	Juniperus chinensis 'Sea Green'	Sea Green Chinese Juniper	24" HT	24
<b>Perennials</b>				
ATS6	Allium tanguticum 'Summer Beauty'	Summer Beauty Ornamental Chive	1 GAL	26
CAK6	Calamagrostis x acutiflora 'Karl Foerster'	Karl Foerster Feather Reed Grass	1 GAL	28
HHR6	Hemerocallis 'Happy Returns'	Happy Returns Daylily	1 GAL	21
NFW6	Nepeta x faassenii 'Walker's Low'	Walker's Low Catmint	1 GAL	10
SHT6	Sporobolus heterolepis 'Tara'	Tara Prairie Dropseed	1 GAL	35

**NATIVE SEED MIX**



Pizzo Native Plant Nursery, LLC • 10729 Pine Road • Leland, IL 60531 • Phone: 815-981-8000 • www.pizzonursery.com

**Dry-Mesic Prairie Seed Mix (Dry-Mesic Soils)**

Base Mix Without Supplemental Plant

Designed for sunny areas that range from dry to mostly dry throughout the year. The species in this mix are adapted to dry soil conditions, often with a stony character. Over 63% of this mix is composed of a diverse array of wildflowers, blooming from April through October, attracting a plethora of native butterflies and birds. The result is a medium height prairie with an average height of 3.1' by seed count and approximately 10% of seeds averaging 2" high or more at maturity.

CODE	SCIENTIFIC NAME	COMMON NAME	C.WALL	H.WALL	HEIGHT	SEEDS	BLOOM TIME	SEEDS/QT	LAKE/AC	% OF MIX	GERMINATION	TOP SOIL
ANDRO	Andropogon gerardii	Big Bluestem	5	3	3AC	1.8F	2	10,000	1000	2.21	10.0%	0.82%
ASPER	Asperula cynosuroides	Blue Anemone	8	3	1AC	1.5F	2	6,000	6000	0.90	3.6%	0.70%
CELOC	Celastrus occidentalis	Scupperdon-shoulder Tree Toad	10	3	2AC	1.5-2.0F	2	17,000	1700	0.87	2.8%	2.8%
CELOS	Celastrus occidentalis	Common Toad	4	3	2AC	1.5F	2	2,000	2000	1.00	0.8%	0.7%
CELOS	Celastrus occidentalis	Scupperdon Toad	5	3	2AC	1.5F	2	15,000	1500	1.00	4.8%	1.2%
CELOS	Celastrus occidentalis	Blue Toad	5	3	2AC	1.5F	2	15,000	1500	1.00	1.8%	0.9%
Total Seed Count: 51,000 (100%)												
Total Weight: 11.790 (100%)												
Total Volume: 86.59%												

22 E. Chicago Avenue  
Suite 200  
Naperville, IL 60540  
T 630.961.1787  
F 630.961.9925  
hitchcockdesigngroup.com

PREPARED FOR  
**Burgess Commercial Real Estate**

1585 Beverly Court  
Aurora, Illinois 60502

PROJECT  
**Sunbelt Rental Property**  
Naperville, Illinois

ISSUED

June 05, 2023

REVISIONS

No	Date	Issue
1	3/16/2023	Revision 1
2	6/5/2023	Revision 2

CHECKED BY: MPW  
DRAWN BY: DSP

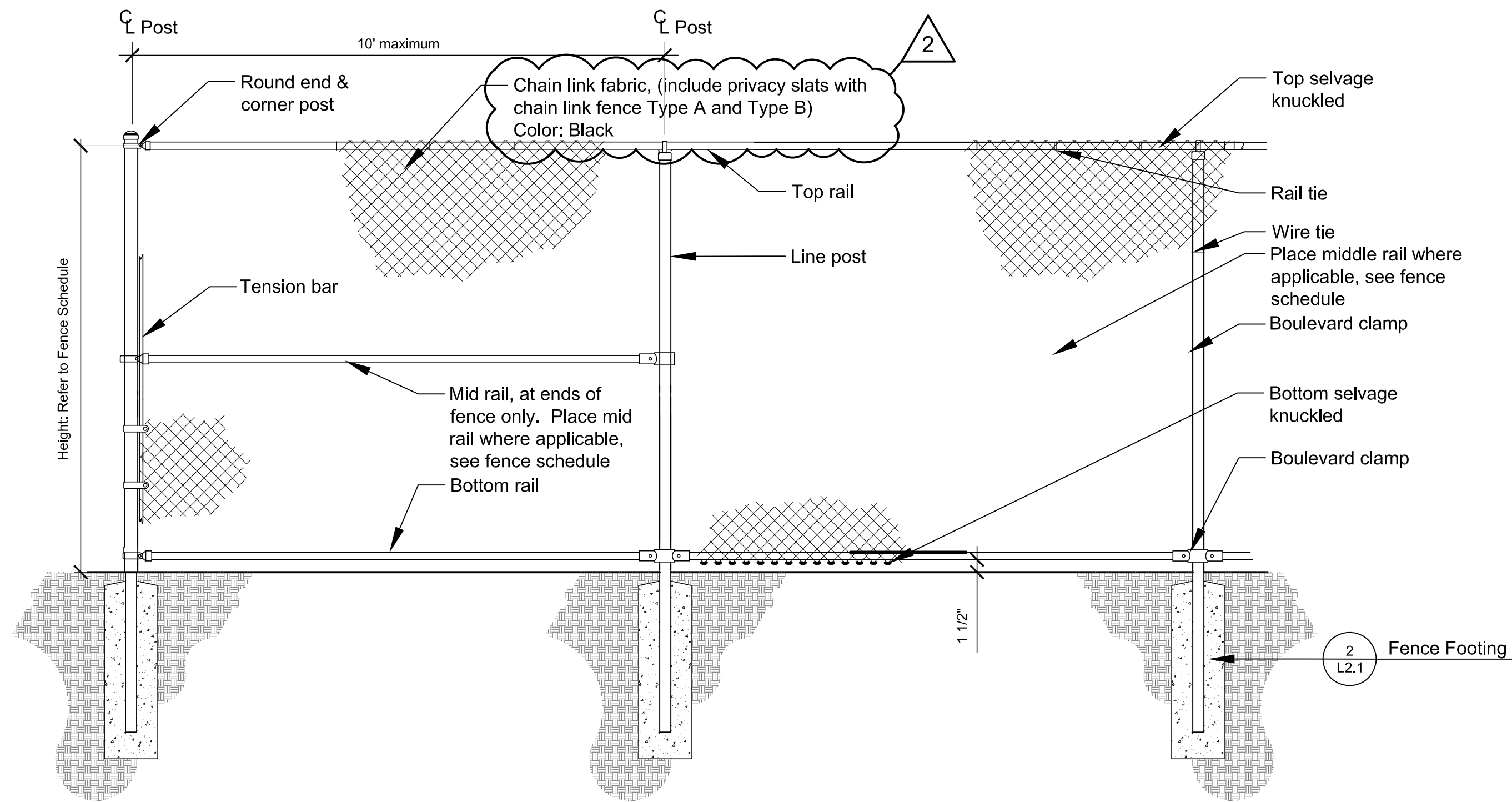
SHEET TITLE

**Landscape Sheets**

NORTH SHEET NUMBER

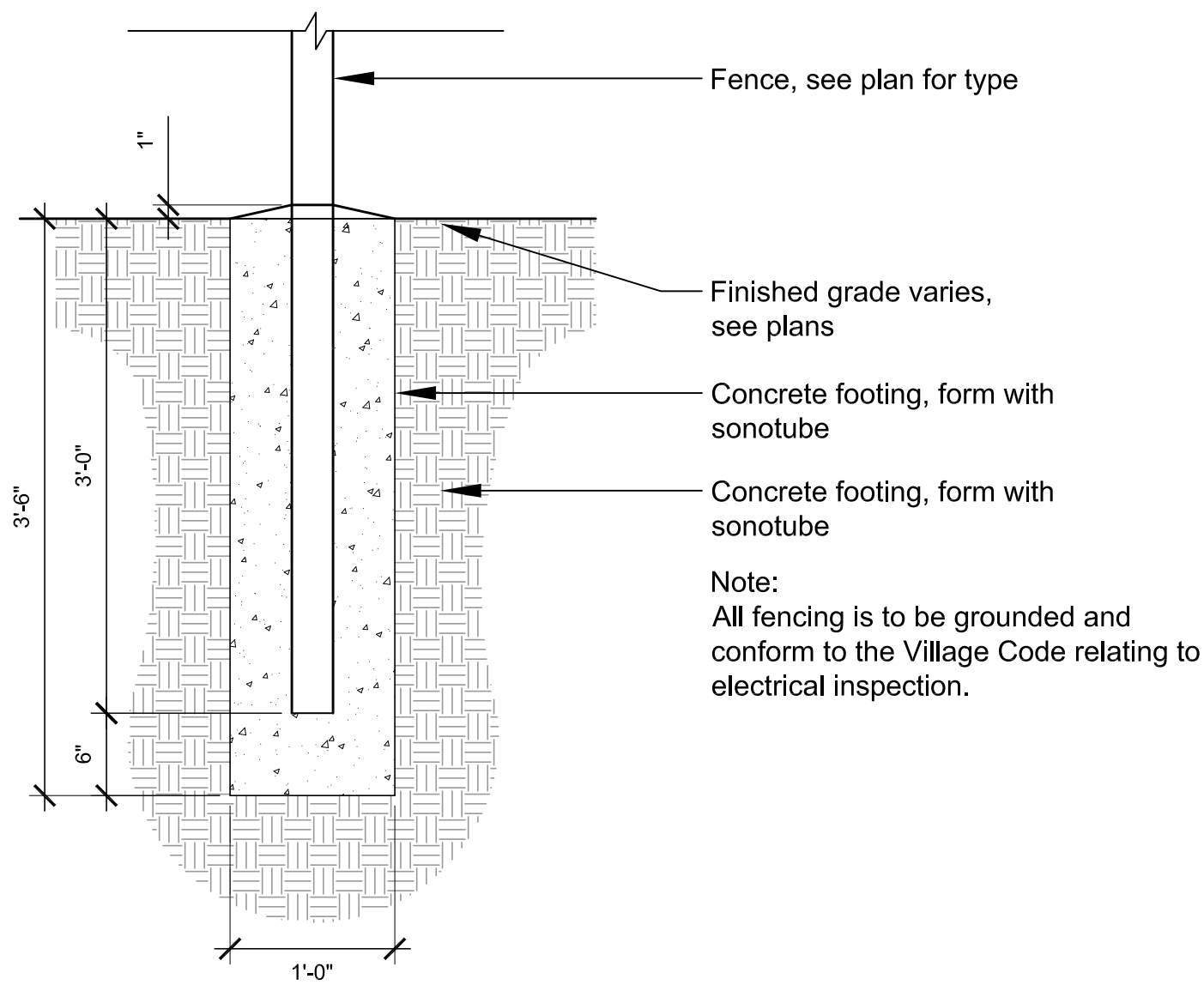
**L2.0**

©2020 Hitchcock Design Group

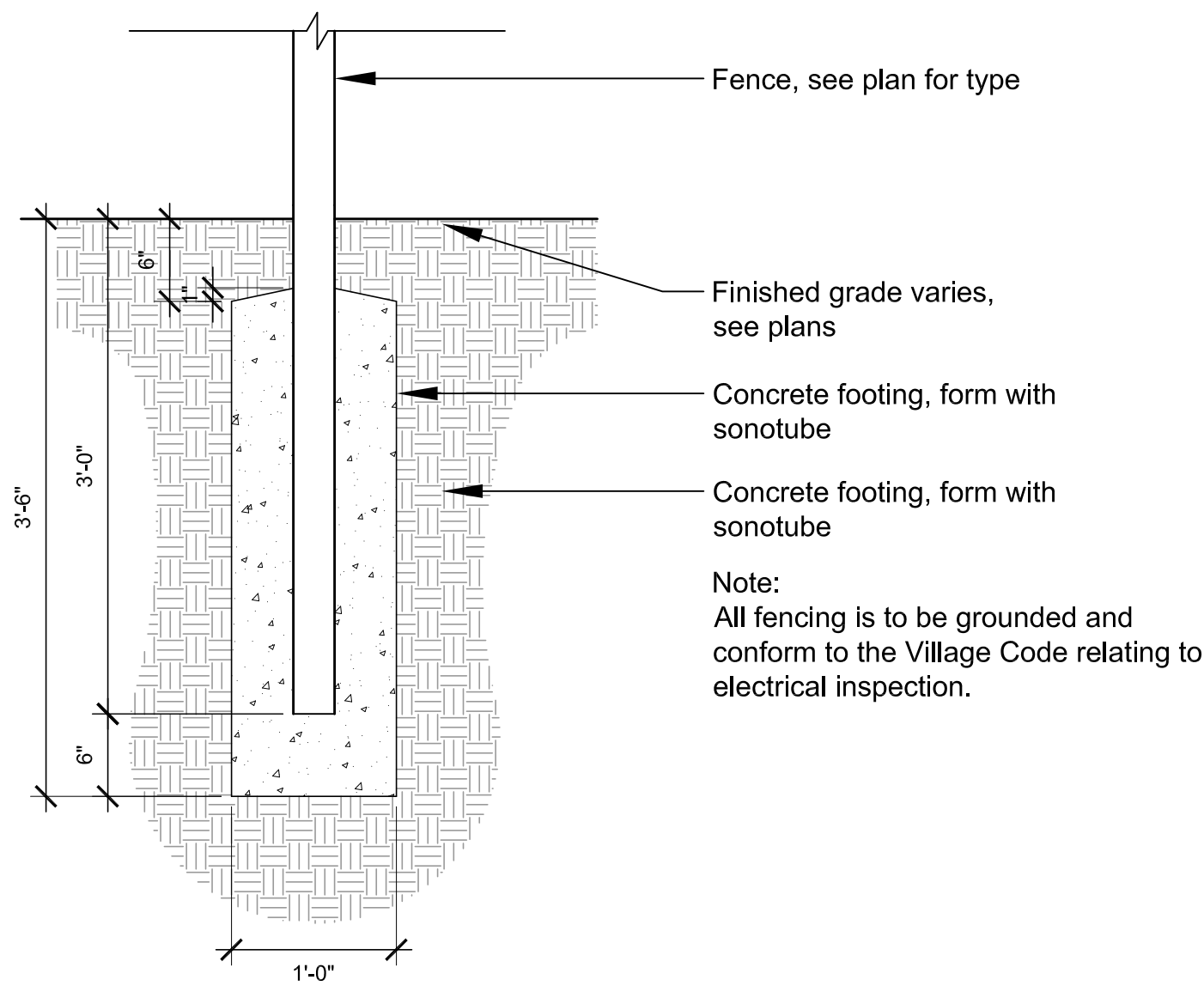


Chainlink Fence Schedule														
Description	Height	Fabric (Height/Gauge/Mesh)	Footing Depth	Terminal Posts	Line Posts	Line Post Spacing	Top Rail	Center Rail	Bottom Rail	Truss Rod W/ Turnbuckle	Tension Wire	Black Privacy Slats	Finish	Post Cap
Type A	6'	9GA. / 2"	42"	3" O.D.	2.375"	Max 10'-0"	1.66"	1.66"	1.66"	None	None	Yes	Galvanized	Dome
Type B	6'	9GA. / 2"	42"	3" O.D.	2.375"	Max 10' O.C.	1.66"	1.66"	1.66"	None	None	Yes	Galvanized	Dome

**1 Chain Link Fence**  
 Scale: 1/2" = 1'-0"



FENCE POST IN PAVEMENT

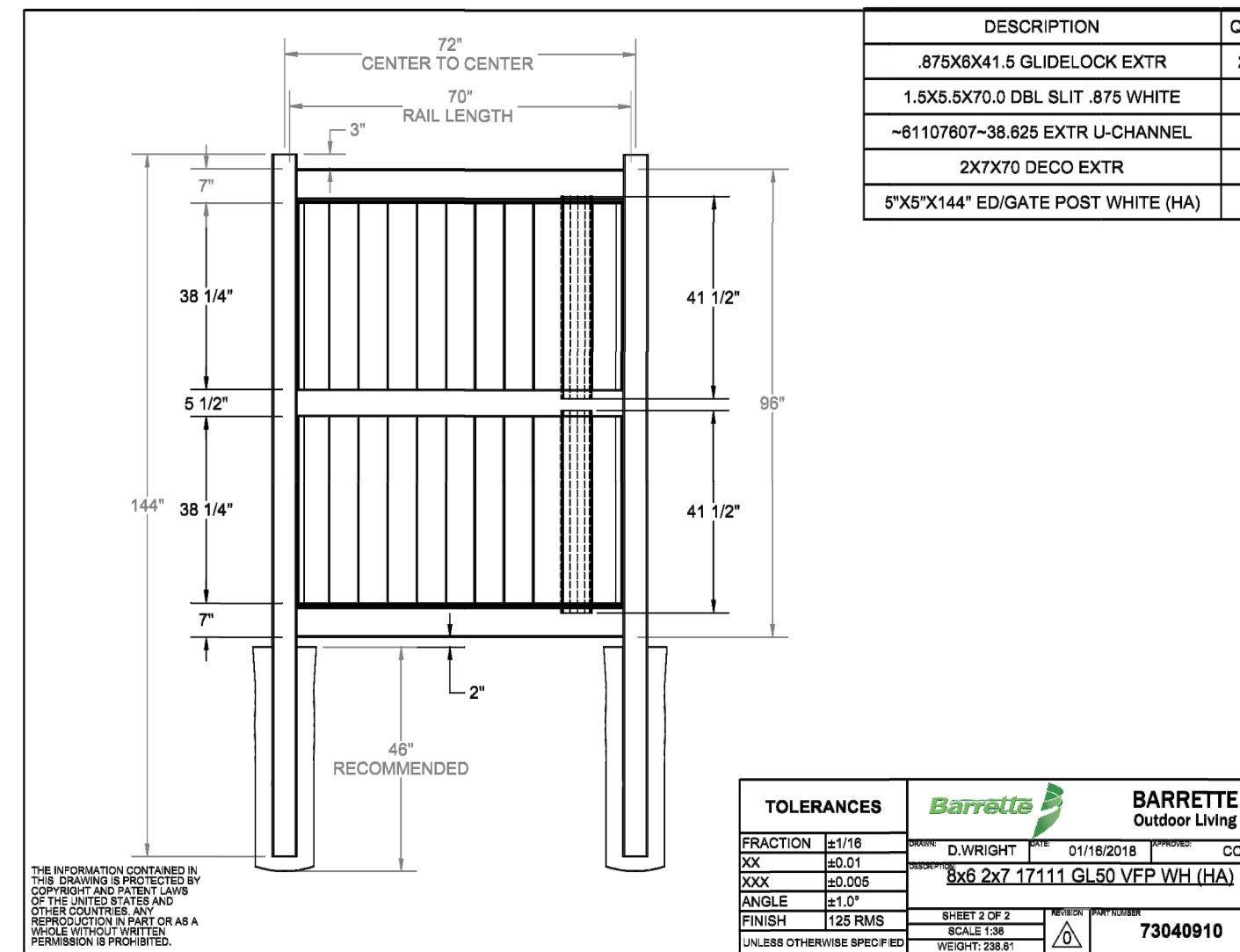
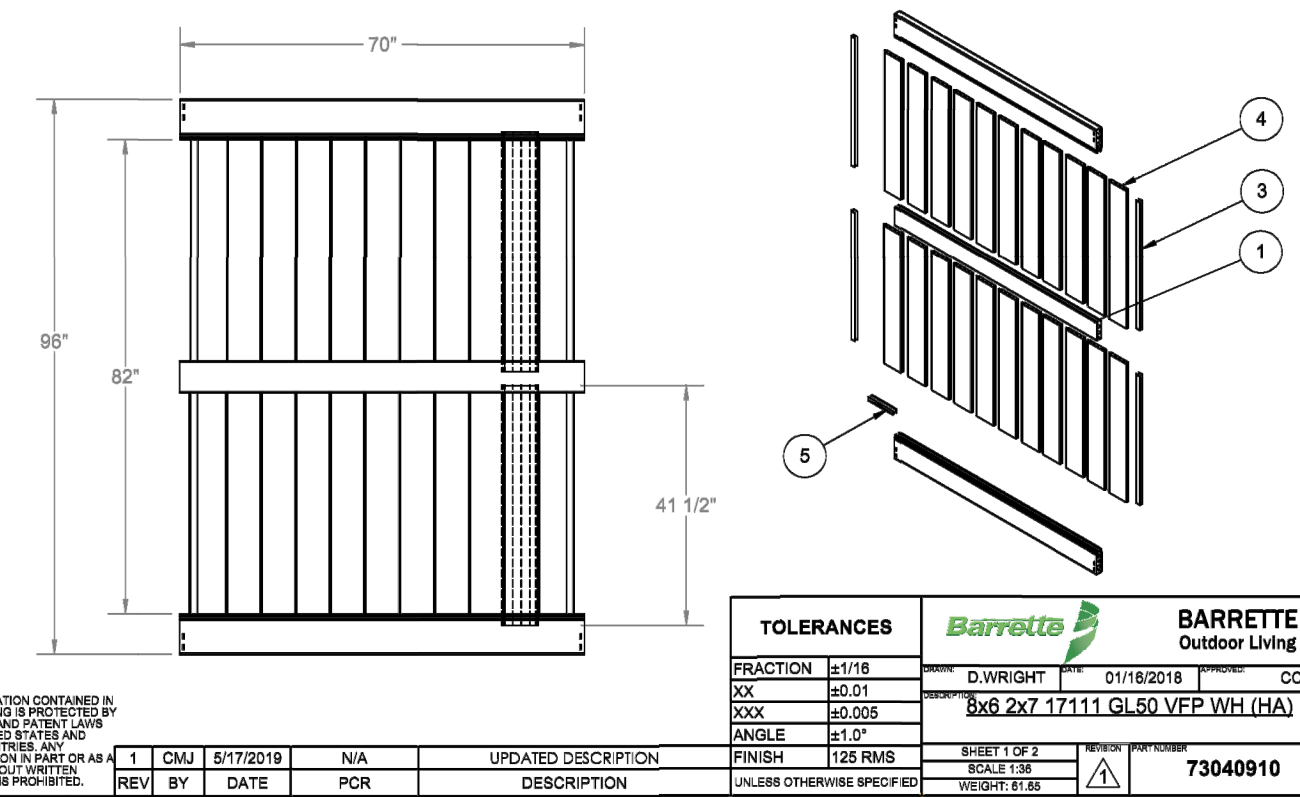


FENCE POST IN TURF

**2 Fence Footing**  
 Scale: 1" = 1'-0"



ITEM NO.	73040910	73025562	73025563	73040523	DESCRIPTION	QTY
1	81118088	81118091	81118039	81117838	1.5X5.5X70.0 DBL SLIT .875 WHITE	1
2	81118009	81118010	81118011	81117839	2X7X70 DECO EXTR	2
3	81108228	81117856	81117857	81117842	-81107807-38.825 EXTR U-CHANNEL	4
4	81117880	81117851	81117852	81117840	.875X8X41.5 GLIDELOCK EXTR	22
5	34107823				INSTRUCTIONS PRIVACY VINYL FENCE KIT (PCR 161027JGH-A)	1



Description: PVC Fence  
 Manufacturer: Barrette Outdoor Living  
 545 Tilton Road  
 Egg Harbor City, NJ 08215  
 1-888-549-7350  
<https://activeyards.com>

Series: Haven  
 Style: Dogwood  
 Color: Gray

**3 Decorative Vinyl Fence, 8' Height**  
 Scale: N.T.S.

22 E. Chicago Avenue  
 Suite 200  
 Naperville, IL 60540  
 T 630.961.1787  
 F 630.961.9925  
[hitchcockdesigngroup.com](http://hitchcockdesigngroup.com)

PREPARED FOR  
**Burgess Commercial Real Estate**

1585 Beverly Court  
 Aurora, Illinois 60502

PROJECT  
**Sunbelt Rental Property**  
 Naperville, Illinois

ISSUED

June 05, 2023

REVISIONS

No	Date	Issue
1	3/16/2023	Revision 1
2	6/5/2023	Revision 2

CHECKED BY MPW  
 DRAWN BY DSP

SHEET TITLE  
**Landscape Details**

NORTH SHEET NUMBER

**L2.1**

©2020 Hitchcock Design Group