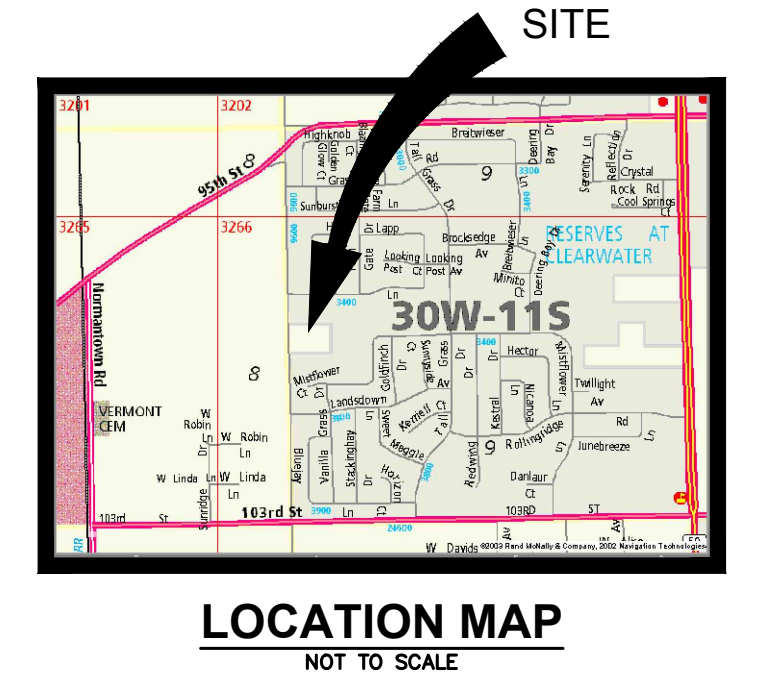


LEGEND

EXISTING	
	STORM SEWER
	OVERHEAD WIRES
	FENCE
	FIRE HYDRANT
	VALVE IN VAULT
	INLET
	MANHOLE WITH CLOSED LID
	MANHOLE WITH OPEN LID
	POWER POLE
	HAND HOLE
	PEDESTAL
	SIGN
	CURB & GUTTER
	SPOT ELEVATION
	CONTOUR
	TREE
	PINE
	SHRUB
	TREE LINE
	CALLOUT FOR SANITARY MANHOLE
	CALLOUT FOR WATER STRUCTURE
	CALLOUT FOR STORM STRUCTURE



INTECH CONSULTANTS, INC. 1889 UNIVERSITY LANE, SUITE D LISLE, ILLINOIS 60532 PHONE: 630-964-5656 ILLINOIS REGISTRATION NO. 184-001040	ENGINEERS - SURVEYORS DATE: _____ NO. _____ REVISION _____ BY _____
ISLAMIC CENTER OF NAPERVILLE	ISLAMIC CENTER OF NAPERVILLE 248TH AVENUE SITE NAPERVILLE, ILLINOIS
PRELIMINARY ENGINEERING PLAN PHASE 1	SCALE: 1"=40' DATE: 3-30-20 DRAWN: BC DESIGNED: EFS PROJECT NO: 2011-016B SHEET 1 OF 1

M:\CAD Projects\2011\016B\2011-016B PENG.dwg, PRE-ENG PLAN PH 1, 12/30/2020 7:32:49 AM, SJP