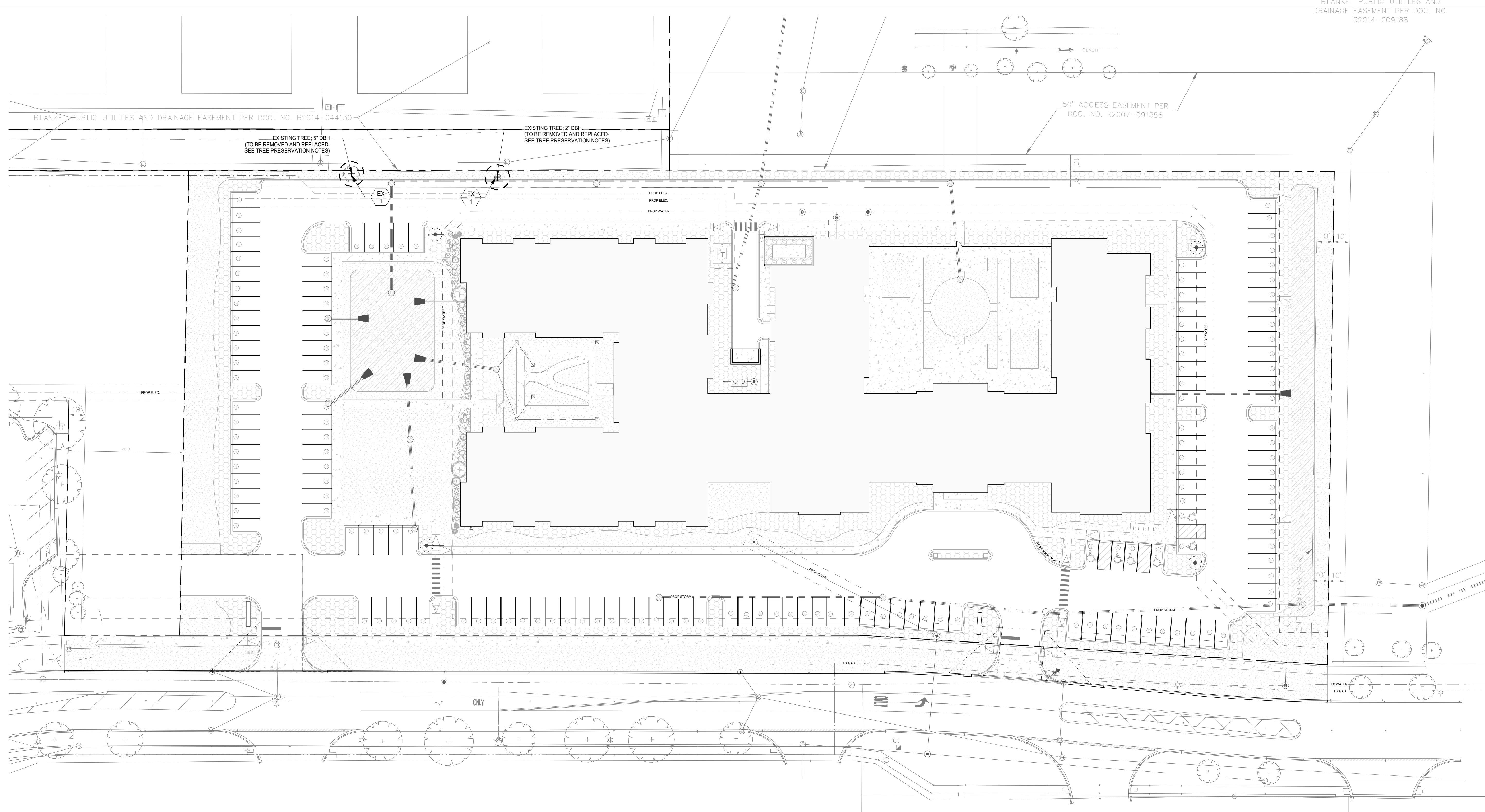


3'
2'
1'
0' VERIFY SHEET SCALE HERE



RYAN A+E, INC.
533 South Third Street
Suite 100
Minneapolis, MN 55415
612-492-4000 tel
612-492-3000 fax

WWW.RYANCOMPANIES.COM

OWNER

CONSULTANTS



4201 Winfield Road
Suite 600
Warrenville, IL 60555
630-487-5550

PROJECT INFORMATION

AUDREY SENIOR LIVING

2939 Audrey Avenue
Naperville, IL 60540

© 2022 RYAN A+E, INC.

DRAWN BY	CHECKED BY
JCB	JCB
JOB NO.	DATE
701233	01/25/2023

ISSUE RECORD		
ISSUE #	DATE	DESCRIPTION
C	01/25/2023	CITY RESUBMITTAL #2

PRELIMINARY
NOT FOR CONSTRUCTION

CITY RESUBMITTAL
01.25.2023

TREE PRESERVATION PLAN

L1.2a

1 TREE PRESERVATION/REMOVAL PLAN
L1.2a 1" = 30'-0"

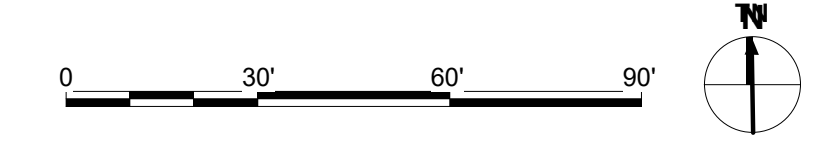
TREE PRESERVATION/REMOVAL

- THERE ARE TWO (2) EXISTING TREES ON SITE. DUE TO CLOSE PROXIMITY TO PROPOSED SITE IMPROVEMENTS THESE TREES ARE INTENDED TO BE REMOVED SINCE PRESERVATION WOULD LEAD TO INSUFFICIENT TREE PROTECTION MEASURES FOR THERE OVERALL HEALTH AND SUCCESS.

EXISTING TREE INVENTORY:
QUANTITY: TWO (2)
SIZES (AT DBH): 5" AND 2"
SPECIES: UNDETERMINED; SAPLINGS

PRESERVED: NONE
REMOVED: TWO (2)
REPLACED: THREE (3) SEE LANDSCAPE PLAN L1.2

SYM.	QTY	ID	COMMON NAME	SCIENTIFIC NAME	EXISTING SIZE (DBH)	MATURE HEIGHT/WIDTH	COMMENTS
	1	EX	EXISTING TREES (SEE CIVIL)	N/A	5" DBH		TO BE REMOVED
	1	EX	EXISTING TREES (SEE CIVIL)	N/A	2" DBH		TO BE REMOVED
TOTAL 2							



NOT FOR CONSTRUCTION