

VICINITY MAP
NO SCALE

PRELIMINARY/FINAL PLAT OF SUBDIVISION MARKET MEADOWS RESUBDIVISION NO. 2

IN THE NORTHEAST QUARTER OF SECTION 29, TOWNSHIP 38 NORTH, RANGE
10 EAST OF THE THIRD PRINCIPAL MERIDIAN, IN DU PAGE COUNTY, ILLINOIS.

P.I.N. 08-29-203-029

PROPERTY ADDRESS

LOT 1: 1230 S. NAPER BOULEVARD (EXISTING)
NAPERVILLE, IL 60540

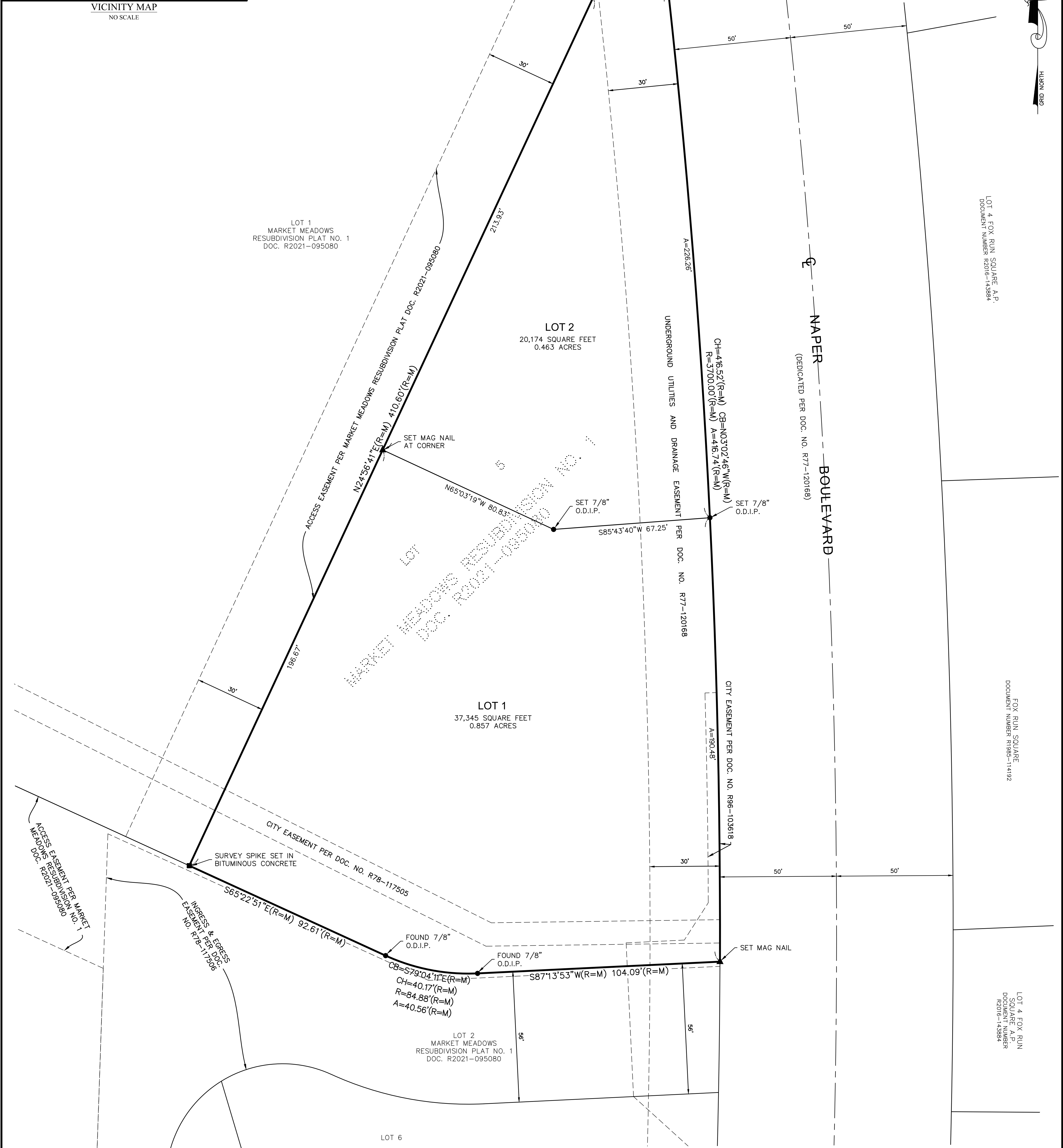
LOT 2: 1211 S. NAPER BOULEVARD (NEW)
NAPERVILLE, IL 60540

GRAPHIC SCALE



(IN FEET)
1 inch = 20 ft.

THIS PLAT HAS BEEN SUBMITTED FOR
RECORDING BY AND RETURN TO:
NAME: NAPERVILLE CITY CLERK
ADDRESS: 400 S. EAGLE STREET
NAPERVILLE, IL 60540



ABBREVIATIONS
O.D.I.P. = OUTSIDE DIAMETER IRON PIPE
N = NORTH
S = SOUTH
E = EAST
W = WEST
(R) = RECORD BEARING OR DISTANCE
(M) = MEASURED BEARING OR DISTANCE
(C) = CALCULATED BEARING OR DISTANCE
(D) = DEED BEARING OR DISTANCE
B.S.L. = BUILDING SETBACK LINE
U.E. = UTILITY EASEMENT
D.E. = DRAINAGE EASEMENT
P.U.E. = PUBLIC UTILITY EASEMENT
P.O.C. = POINT OF COMMENCEMENT
P.O.B. = POINT OF BEGINNING
P.U. & D.E. = PUBLIC UTILITIES AND DRAINAGE EASEMENT

LEGEND

- FOUND 7/8" O.D.I.P. AT CORNER UNLESS OTHERWISE NOTED
- ▲ FOUND MAG NAIL AT CORNER
- TO BE SET CONCRETE MONUMENT UNLESS OTHERWISE NOTED
- + TO BE SET CROSS IN CONCRETE UNLESS OTHERWISE NOTED

LINE LEGEND

- SUBDIVISION BOUNDARY LINE
- ADJACENT LAND PARCEL LINE
- LOT LINE
- EXISTING EASEMENT LINE
- CENTERLINE
- BUILDING SETBACK LINE
- SECTION LINE

AREA SUMMARY

GROSS	57,519 SQUARE FEET	OR	1.320 ACRES
R.O.W. DEDICATION	0 SQUARE FEET	OR	0 ACRES
NET AREA	57,519 SQUARE FEET	OR	1.320 ACRES
(TO HEAVY LINES)			
(BASED ON MEASURED VALUES)			

BASIS OF BEARINGS

THE BEARINGS SHOWN HEREON
ARE BASED ON THE ILLINOIS
STATE PLANE COORDINATE
SYSTEM - 1201 EAST ZONE.

OWNER/DEVELOPER

MATT JUNG
SHOREWOOD DEVELOPMENT GROUP
860 MILWAUKEE AVENUE, SUITE 100
BUFFALO GROVE, IL 60089

ENGINEER

JACOB & HEFNER ASSOCIATES, INC.
1333 BUTTERFIELD ROAD, SUITE 300
DOWNERS GROVE, IL 60515
630-652-4600

CITY PROJECT NUMBER: DEV-0068-2025

J:\PSDATA\2025 PROJECTS\25.0097\25.0097-01 PLAT OF SUB\25.0097-01-SUB.DWG

[BOL] NO. 25-0097-01	SCALE: 1" = 20'	<div><div>COMPASS</div><div>SURVEYING LTD</div><div>ALTA SURVEYS • TOPOGRAPHY • CONSTRUCTION STAKING</div><div>2631 GINGER WOODS PARKWAY, STE. 100</div><div>AURORA, IL 60502</div><div>PHONE: (630) 820-9100 FAX: (630) 820-7030 EMAIL: ADMIN@CLSURVEYING.COM</div></div>	<div><div>PROJECT</div><div>MARKET MEADOWS RESUBDIVISION NO. 2</div><div>MARKET MEADOWS SHOPPING CENTER</div><div>Naperville, Illinois</div></div> <div><div>CLIENT</div><div>Shorewood Development Group</div><div>860 Milwaukee Avenue, Suite 100</div><div>Buffalo Grove, IL 60089</div></div>	DATE: 05-21-25	PC N/A	DRAWN BY: DN	CHECKED BY: DW	BOOK: N/A, PG: N/A	<div><div><div></div></div><div><div></div></div><div><div></div></div></div>	
				NO.	REVISIONS			DATE		BY
				1.	REVISED PER CITY COMMENTS			06-30-25		RHM

