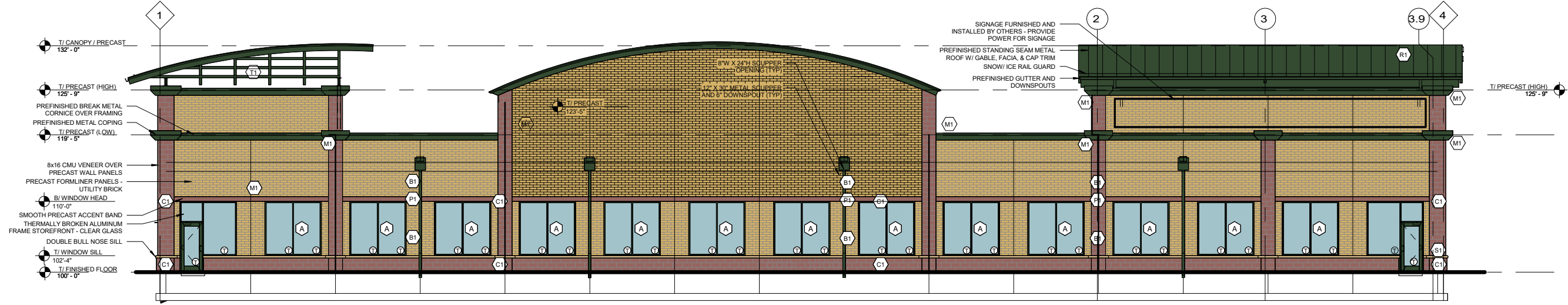


PLOTTED: 12/14/2022 5:15:33 PM

FILE PATH: Z:\Naperville 6692 Jet Brite Car Wash\CADD\_Design\Revit\03-Architectural\Jet Brite Naperville R1.rvt



**4 WEST ELEVATION**  
1/16" = 1'-0"

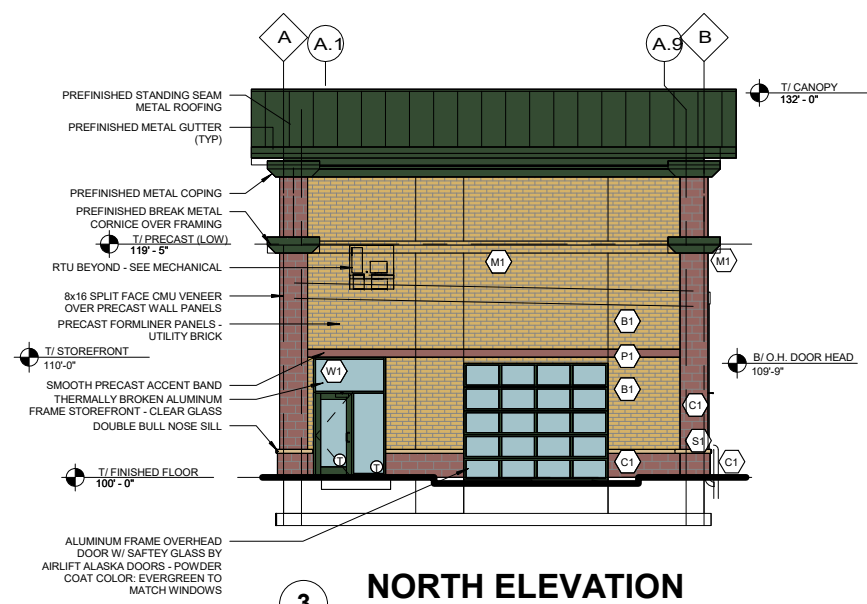
**EXT. FINISH LEGEND**

- (C1) NORTHFIELD BLOCK RED CEDAR SPLIT FACE CMU
- (S1) PRECAST CONCRETE SILL 'BUFF'
- (B1) PRECAST FORMLINER (UTILIT BRICK) 'BUFF'
- (M1) PREFINISHED METAL COPING 'FOREST GREEN'
- (P1) PRECAST CONCRETE SMOOTH BAND 'BUFF'
- (W1) ANNOXIDIZED ALUMINUM STOREFRONT 'FOREST GREEN'
- (R1) PREFINISHED STANDING SEAM METAL ROOF 'FOREST GREEN'
- (T1) STRUCTURAL TUBE STEEL 'SPACE GREY'

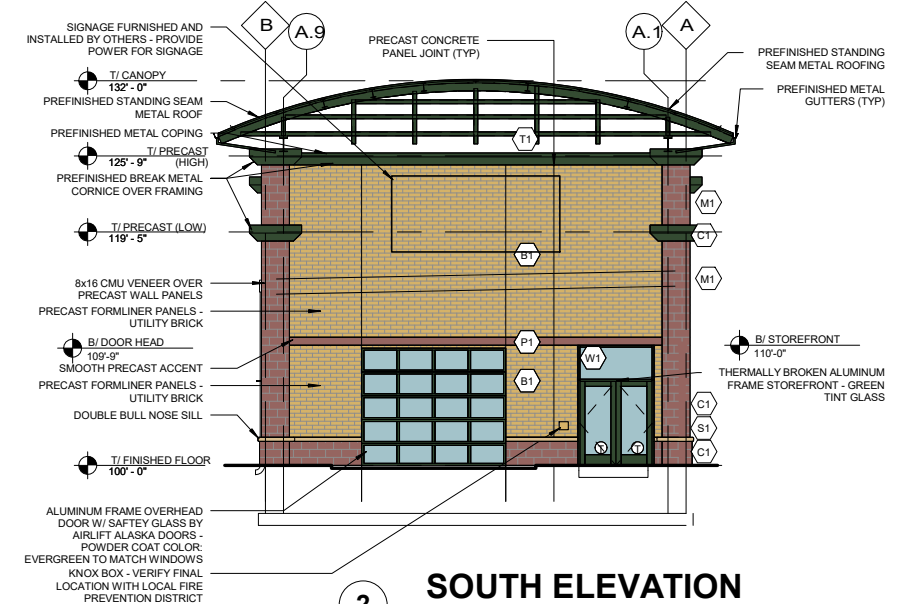
NOTES:  
1. VERIFY ALL FINISHES AND COLORS WITH OWNER  
① TEMPERED GLASS

**BUILDING MATERIAL RATIO**

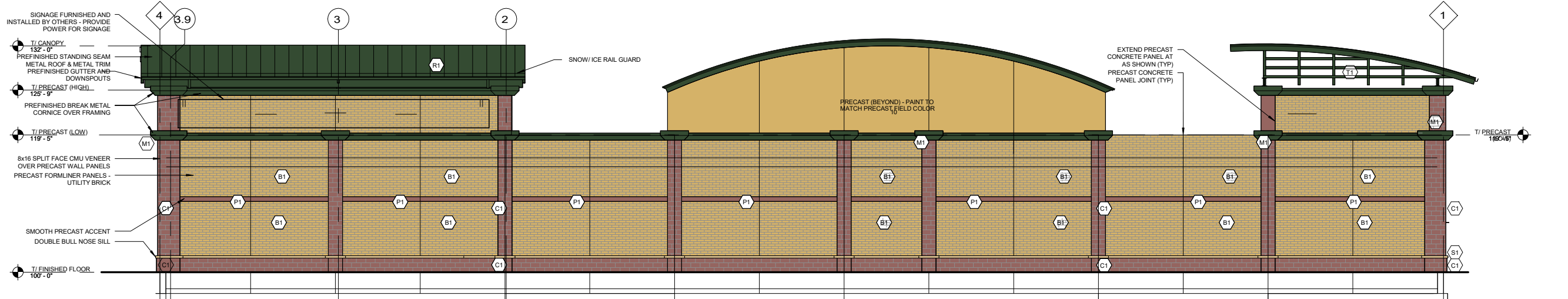
| MATERIAL                            | ELEVATION |       |       |       | TOTAL |
|-------------------------------------|-----------|-------|-------|-------|-------|
|                                     | NORTH     | SOUTH | EAST  | WEST  |       |
| PRECAST CONCRETE W/ BRICK FORMLINER | 47.8%     | 43.3% | 67.8% | 55.1% | 53.7% |
| SPLIT FACE CMU                      | 11.9%     | 12.5% | 17.6% | 14.0% | 14.1% |
| METAL COPING                        | 4.2%      | 4.5%  | 4.6%  | 4.3%  | 4.4%  |
| GLASS / STOREFRONT                  | 14.9%     | 15.8% | 0%    | 17.9% | 11.9% |
| STANDING SEAM METAL ROOFING         | 16.3%     | 17.2% | 5.8%  | 5.1%  | 11.2% |
| STRUCTURAL STEEL                    | 4.9%      | 6.7%  | 4.2%  | 3.6%  | 4.88% |



**3 NORTH ELEVATION**  
1/16" = 1'-0"



**2 SOUTH ELEVATION**  
1/16" = 1'-0"



**1 EAST ELEVATION**  
1/16" = 1'-0"

| DATE       | REVISIONS                  | SCALE      | As Indicated |
|------------|----------------------------|------------|--------------|
| 12-14-2022 | Revisions per city review. | DRAWN      |              |
|            |                            | CHECKED    |              |
|            |                            | APPROVED   |              |
|            |                            | DATE       |              |
|            |                            | ISSUED FOR | REVIEW       |



**JET BRITE CAR WASH NAPERVILLE**  
JB DEVELOPMENT, INC

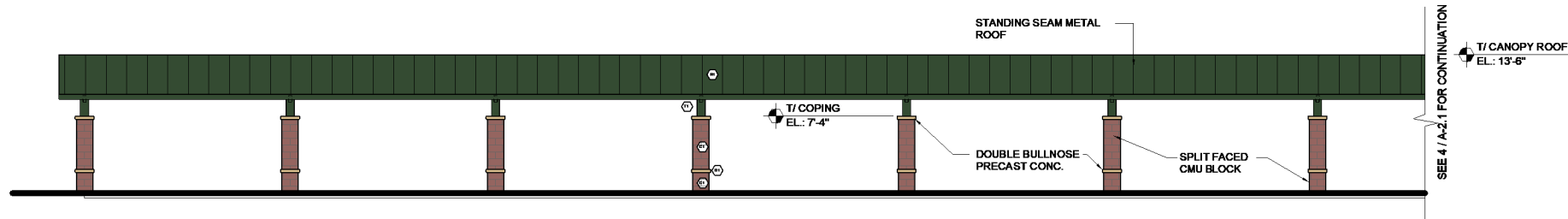
552 West Boughton Road • Bolingbrook, Illinois 60440  
630-755-0290 • 844-241-8033(WATS)

**EXTERIOR ELEVATIONS**

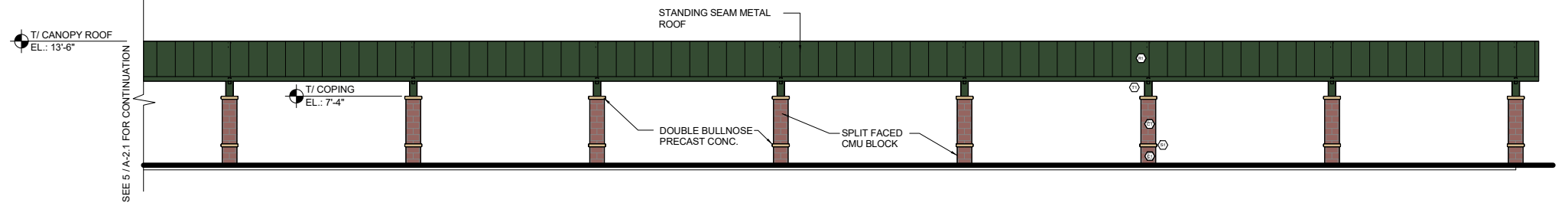
|          |         |
|----------|---------|
| DWG. NO. | A-2.0   |
| OF       | PROJECT |
| PROJECT  | 6692    |

PLOTTED: 12/14/2022 5:15:42 PM

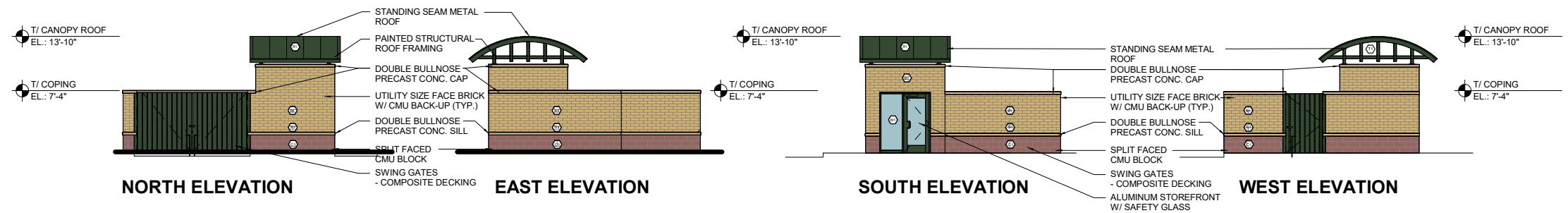
FILE PATH: Z:\Naperville 6692 Jet Brite Car Wash\CADD\_Design\Revit\03-Architectural\Jet Brite Naperville R1.rvt



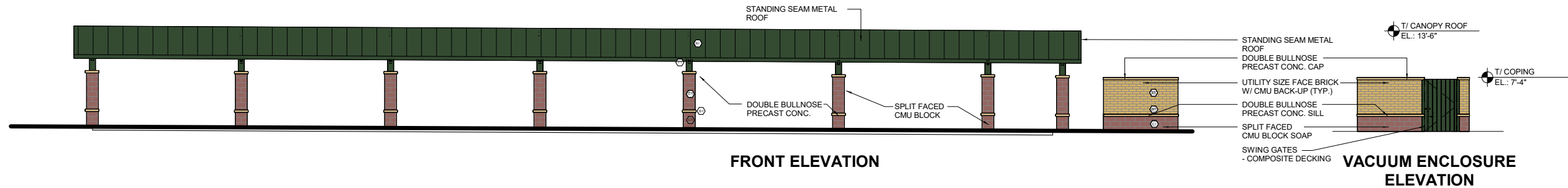
**5 WEST VACUUM CANOPY (NORTH END)**  
1/16" = 1'-0"



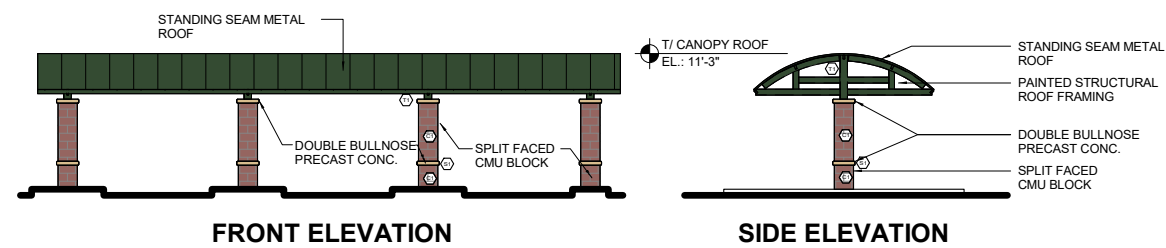
**4 WEST VACUUM CANOPY (SOUTH END)**  
1/16" = 1'-0"



**3 VENDING / TRASH / VACUUM ENCLOSURE**  
1/16" = 1'-0"



**2 NORTH VACUUM CANOPY**  
1/16" = 1'-0"



**1 PAY CANOPY**  
1/16" = 1'-0"

| EXT. FINISH LEGEND |   |
|--------------------|---|
| (C1)               | NORTHFIELD BLOCK 'RED CEDAR' SPLIT FACE CMU         |
| (S1)               | PRECAST CONCRETE SILL 'BUFF'                        |
| (B1)               | PRECAST FORMLINER (UTILIT BRICK) 'BUFF'             |
| (M1)               | PREFINISHED METAL COPING 'FOREST GREEN'             |
| (P1)               | PRECAST CONCRETE SMOOTH BAND 'BUFF'                 |
| (W1)               | ANNOOZED ALUMINUM STOREFRONT 'FOREST GREEN'         |
| (R1)               | PREFINISHED STANDING SEAM METAL ROOF 'FOREST GREEN' |
| (T1)               | STRUCTURAL TUBE STEEL 'SPACE GREY'                  |
| NOTES:             |   |
| 1                  | VERIFY ALL FINISHES AND COLORS WITH OWNER           |
| (T)                | TEMPERED GLASS                                      |

| DATE       | REVISIONS                  | SCALE      | As Indicated |
|------------|----------------------------|------------|--------------|
| 12-14-2022 | Revisions per city review. | DRAWN      |              |
|            |                            | CHECKED    |              |
|            |                            | APPROVED   |              |
|            |                            | DATE       |              |
|            |                            | ISSUED FOR | REVIEW       |



JET BRITE CAR WASH NAPERVILLE  
JB DEVELOPMENT, INC

552 West Boughton Road • Bolingbrook, Illinois 60440  
630-755-0290 • 844-241-8033(WATS)

EXTERIOR ELEVATIONS

| DWG. NO.     |
|--------------|
| A-2.1        |
| OF           |
| PROJECT 6692 |