



NORTHEAST ELEVATION

Scale: 1/4" = 1'-0"

ELEVATION KEY NOTES:		
<ul style="list-style-type: none"> <li>◇ STYROFOAM OR CLUSTERSHALL SYSTEM, MANUFACTURER: KAWNEER; COLOR: SILVER; GLAZING: W/FR. FPG; 1" INSULATED LOW-E GLAZING UNIT; STYLE: SOLARBAN 708 CLEAR AND GREEN.</li> <li>◇ CALCULUS SLATE SCHEMATIC, W/FR. ARCHITECT; W/FR. TRANSDUCER; EXTERIOR COLOR: BAYBERRY; FINISH: ROCKID OR SMOOTH W/INTEGRAL COLOR GROUT.</li> <li>◇ F.F.E.S.</li> <li>◇ ARCHITECTURAL PRECAST MOUNTING OR SPANDEE PANEL; W/FR. 3/8" REINFORCING BARS; EXTERIOR COLOR: BLUE AND GRAY; FINISH: SMOOTH ACID WASH.</li> <li>◇ PREFINISHED METAL PARAPET COINGS, W/FR. BRIDGE; COLOR: SAGE W/FR.</li> <li>◇ PREFINISHED ALUMINUM CONDOPRE PANEL, W/FR. INTERIOL ALPOLIC; COLOR: SILVER.</li> </ul>	<ul style="list-style-type: none"> <li>◇ DECORATIVE WALL MOUNTED LIGHT FIXTURE.</li> <li>◇ PAINTED YELLOW METAL DOOR AND FRAME.</li> <li>◇ SQUARE LIGHT FIXTURE.</li> <li>◇ FACE BRICK; SEE MODULAR.</li> <li>◇ CONCRETE SMOOTH STUCCO OR PAINTED GLASS/REINFORCED CONCRETE (G/R/C).</li> <li>◇ PAINTED FINISHES/STRUCTURAL STEEL; CONFINES.</li> </ul>	<ul style="list-style-type: none"> <li>◇ PAINTED METAL CLATE.</li> <li>◇ PREFINISHED BOLING OVERHEAD DOOR.</li> <li>◇ FIBER COMING PANEL.</li> </ul>

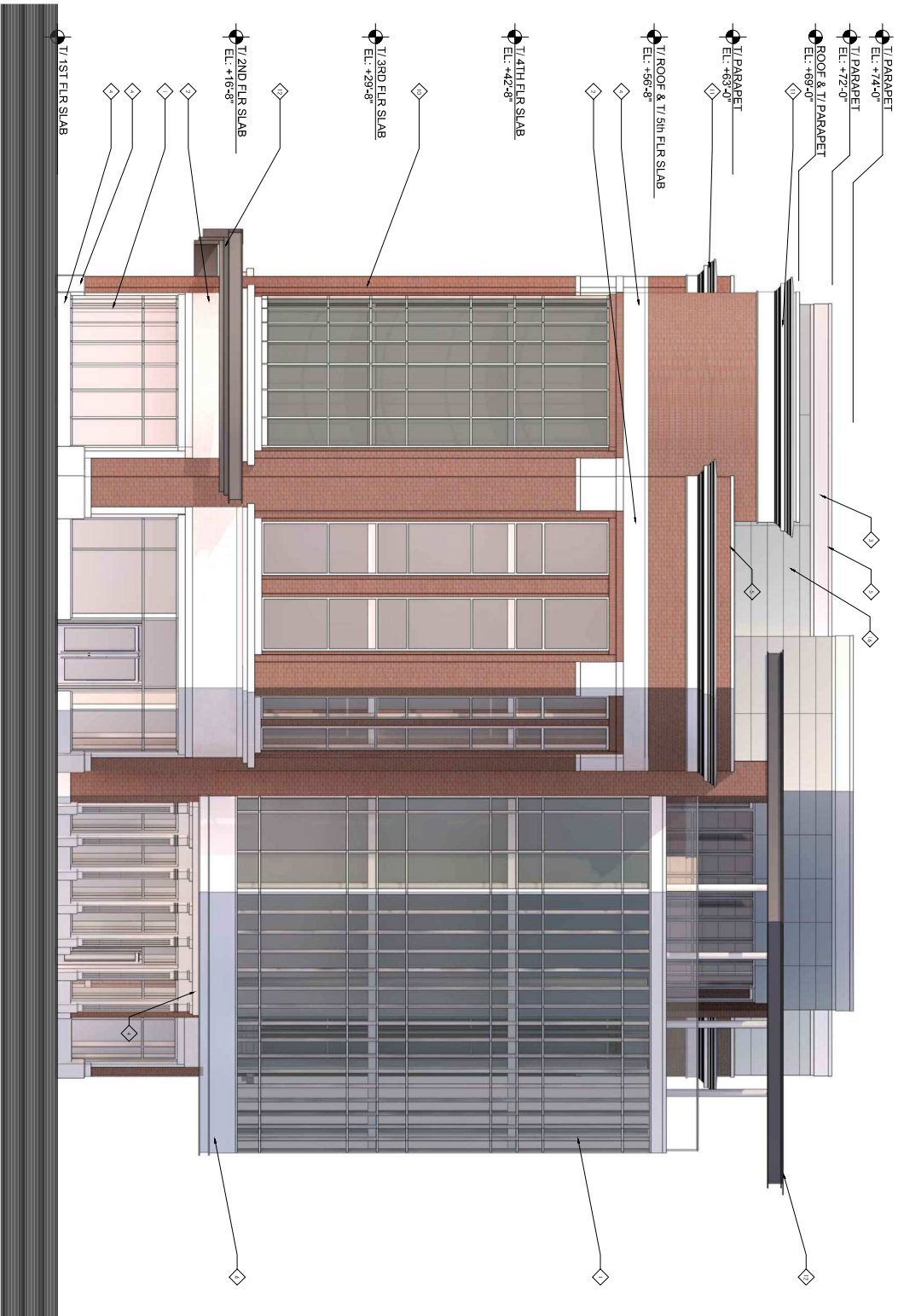


NORTH ELEVATION

Scale: 1/4" = 1'-0"

ELEVATION KEY NOTES:

- ◆ INTERIOR GLAZING: 1/2" ALUMINUM CLADDING, VERTICAL FINISH, 1/2" GLASS
- ◆ EXTERIOR GLAZING: 1/2" ALUMINUM CLADDING, VERTICAL FINISH, 1/2" GLASS
- ◆ BRICK: 8" COMMON BRICK, RECESSED JOINTS, MORTAR COLOR: SANDY RED
- ◆ STONE: 2" THICK, NATURAL FINISH, MORTAR COLOR: SANDY RED
- ◆ ROOF: 4" POLYURETHANE INSULATION, 2" GYPSUM BOARD, 1/2" ASPHALT/FLY ASH SHINGLES
- ◆ FLOORING: 3/4" TYPICAL, 1/2" TYPICAL
- ◆ FINISH: 1/2" TYPICAL, 1/2" TYPICAL
- ◆ DOOR: 1/2" ALUMINUM CLADDING, VERTICAL FINISH, 1/2" GLASS
- ◆ WINDOW: 1/2" ALUMINUM CLADDING, VERTICAL FINISH, 1/2" GLASS
- ◆ ROOFING: 4" POLYURETHANE INSULATION, 2" GYPSUM BOARD, 1/2" ASPHALT/FLY ASH SHINGLES
- ◆ FLOORING: 3/4" TYPICAL, 1/2" TYPICAL
- ◆ FINISH: 1/2" TYPICAL, 1/2" TYPICAL
- ◆ DOOR: 1/2" ALUMINUM CLADDING, VERTICAL FINISH, 1/2" GLASS
- ◆ WINDOW: 1/2" ALUMINUM CLADDING, VERTICAL FINISH, 1/2" GLASS
- ◆ ROOFING: 4" POLYURETHANE INSULATION, 2" GYPSUM BOARD, 1/2" ASPHALT/FLY ASH SHINGLES
- ◆ FLOORING: 3/4" TYPICAL, 1/2" TYPICAL
- ◆ FINISH: 1/2" TYPICAL, 1/2" TYPICAL
- ◆ DOOR: 1/2" ALUMINUM CLADDING, VERTICAL FINISH, 1/2" GLASS
- ◆ WINDOW: 1/2" ALUMINUM CLADDING, VERTICAL FINISH, 1/2" GLASS

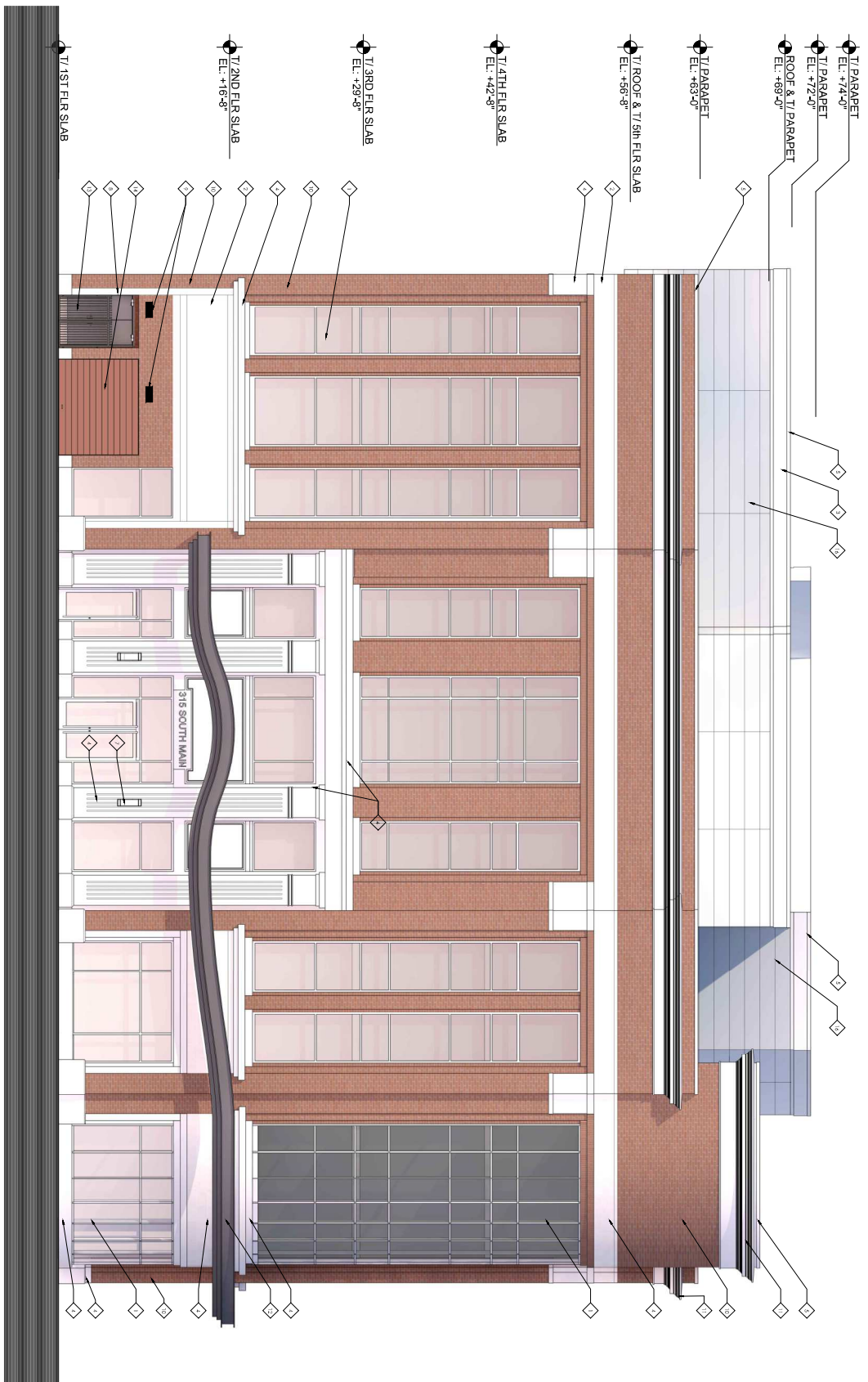


EAST ELEVATION

Scale: 1/4" = 1'-0"

ELEVATION KEY NOTES:

<ul style="list-style-type: none"> <li>◆ POLYMER CONCRETE WALL SYSTEM, MANUFACTURED QUANTITIES</li> <li>◆ CONCRETE FRAME WITH 1 INCHES JOIST CEILING LINE</li> <li>◆ STEEL COLUMN FOR SLAB AND CORNER</li> <li>◆ CONCRETE FLOOR SLAB, WITH ANCHORAGE WITH REINFORCED CONCRETE</li> <li>◆ FLOOR</li> <li>◆ POLYMER CONCRETE WALL SYSTEM, MANUFACTURED QUANTITIES</li> <li>◆ CONCRETE FRAME WITH 1 INCHES JOIST CEILING LINE</li> <li>◆ STEEL COLUMN FOR SLAB AND CORNER</li> <li>◆ CONCRETE FLOOR SLAB, WITH ANCHORAGE WITH REINFORCED CONCRETE</li> <li>◆ FLOOR</li> <li>◆ POLYMER CONCRETE WALL SYSTEM, MANUFACTURED QUANTITIES</li> <li>◆ CONCRETE FRAME WITH 1 INCHES JOIST CEILING LINE</li> <li>◆ STEEL COLUMN FOR SLAB AND CORNER</li> <li>◆ CONCRETE FLOOR SLAB, WITH ANCHORAGE WITH REINFORCED CONCRETE</li> <li>◆ FLOOR</li> </ul>	<ul style="list-style-type: none"> <li>◆ REINFORCED CONCRETE WALL SYSTEM, MANUFACTURED QUANTITIES</li> <li>◆ CONCRETE FRAME WITH 1 INCHES JOIST CEILING LINE</li> <li>◆ STEEL COLUMN FOR SLAB AND CORNER</li> <li>◆ CONCRETE FLOOR SLAB, WITH ANCHORAGE WITH REINFORCED CONCRETE</li> <li>◆ FLOOR</li> <li>◆ POLYMER CONCRETE WALL SYSTEM, MANUFACTURED QUANTITIES</li> <li>◆ CONCRETE FRAME WITH 1 INCHES JOIST CEILING LINE</li> <li>◆ STEEL COLUMN FOR SLAB AND CORNER</li> <li>◆ CONCRETE FLOOR SLAB, WITH ANCHORAGE WITH REINFORCED CONCRETE</li> <li>◆ FLOOR</li> <li>◆ POLYMER CONCRETE WALL SYSTEM, MANUFACTURED QUANTITIES</li> <li>◆ CONCRETE FRAME WITH 1 INCHES JOIST CEILING LINE</li> <li>◆ STEEL COLUMN FOR SLAB AND CORNER</li> <li>◆ CONCRETE FLOOR SLAB, WITH ANCHORAGE WITH REINFORCED CONCRETE</li> <li>◆ FLOOR</li> </ul>	<ul style="list-style-type: none"> <li>◆ EXTERIOR WALL SYSTEM, MANUFACTURED QUANTITIES</li> <li>◆ CONCRETE FRAME WITH 1 INCHES JOIST CEILING LINE</li> <li>◆ STEEL COLUMN FOR SLAB AND CORNER</li> <li>◆ CONCRETE FLOOR SLAB, WITH ANCHORAGE WITH REINFORCED CONCRETE</li> <li>◆ FLOOR</li> <li>◆ POLYMER CONCRETE WALL SYSTEM, MANUFACTURED QUANTITIES</li> <li>◆ CONCRETE FRAME WITH 1 INCHES JOIST CEILING LINE</li> <li>◆ STEEL COLUMN FOR SLAB AND CORNER</li> <li>◆ CONCRETE FLOOR SLAB, WITH ANCHORAGE WITH REINFORCED CONCRETE</li> <li>◆ FLOOR</li> <li>◆ POLYMER CONCRETE WALL SYSTEM, MANUFACTURED QUANTITIES</li> <li>◆ CONCRETE FRAME WITH 1 INCHES JOIST CEILING LINE</li> <li>◆ STEEL COLUMN FOR SLAB AND CORNER</li> <li>◆ CONCRETE FLOOR SLAB, WITH ANCHORAGE WITH REINFORCED CONCRETE</li> <li>◆ FLOOR</li> </ul>
---	--	---



**SOUTH ELEVATION**

Scale: 1/4" = 1'-0"

**ELEVATION KEY NOTES:**

<ul style="list-style-type: none"> <li>◆ INTERIOR FINISHES SHALL BE AS SHOWN ON DRAWING</li> <li>◆ EXTERIOR FINISHES SHALL BE AS SHOWN ON DRAWING</li> <li>◆ EXTERIOR WALLS SHALL BE CONCRETE WITH STUCCO FINISH UNLESS OTHERWISE NOTED</li> <li>◆ EXTERIOR WALLS SHALL BE CONCRETE WITH STUCCO FINISH UNLESS OTHERWISE NOTED</li> <li>◆ EXTERIOR WALLS SHALL BE CONCRETE WITH STUCCO FINISH UNLESS OTHERWISE NOTED</li> <li>◆ EXTERIOR WALLS SHALL BE CONCRETE WITH STUCCO FINISH UNLESS OTHERWISE NOTED</li> <li>◆ EXTERIOR WALLS SHALL BE CONCRETE WITH STUCCO FINISH UNLESS OTHERWISE NOTED</li> <li>◆ EXTERIOR WALLS SHALL BE CONCRETE WITH STUCCO FINISH UNLESS OTHERWISE NOTED</li> <li>◆ EXTERIOR WALLS SHALL BE CONCRETE WITH STUCCO FINISH UNLESS OTHERWISE NOTED</li> <li>◆ EXTERIOR WALLS SHALL BE CONCRETE WITH STUCCO FINISH UNLESS OTHERWISE NOTED</li> <li>◆ EXTERIOR WALLS SHALL BE CONCRETE WITH STUCCO FINISH UNLESS OTHERWISE NOTED</li> <li>◆ EXTERIOR WALLS SHALL BE CONCRETE WITH STUCCO FINISH UNLESS OTHERWISE NOTED</li> </ul>	<ul style="list-style-type: none"> <li>◆ EXTERIOR WALLS SHALL BE CONCRETE WITH STUCCO FINISH UNLESS OTHERWISE NOTED</li> <li>◆ EXTERIOR WALLS SHALL BE CONCRETE WITH STUCCO FINISH UNLESS OTHERWISE NOTED</li> <li>◆ EXTERIOR WALLS SHALL BE CONCRETE WITH STUCCO FINISH UNLESS OTHERWISE NOTED</li> <li>◆ EXTERIOR WALLS SHALL BE CONCRETE WITH STUCCO FINISH UNLESS OTHERWISE NOTED</li> <li>◆ EXTERIOR WALLS SHALL BE CONCRETE WITH STUCCO FINISH UNLESS OTHERWISE NOTED</li> <li>◆ EXTERIOR WALLS SHALL BE CONCRETE WITH STUCCO FINISH UNLESS OTHERWISE NOTED</li> <li>◆ EXTERIOR WALLS SHALL BE CONCRETE WITH STUCCO FINISH UNLESS OTHERWISE NOTED</li> <li>◆ EXTERIOR WALLS SHALL BE CONCRETE WITH STUCCO FINISH UNLESS OTHERWISE NOTED</li> <li>◆ EXTERIOR WALLS SHALL BE CONCRETE WITH STUCCO FINISH UNLESS OTHERWISE NOTED</li> <li>◆ EXTERIOR WALLS SHALL BE CONCRETE WITH STUCCO FINISH UNLESS OTHERWISE NOTED</li> <li>◆ EXTERIOR WALLS SHALL BE CONCRETE WITH STUCCO FINISH UNLESS OTHERWISE NOTED</li> <li>◆ EXTERIOR WALLS SHALL BE CONCRETE WITH STUCCO FINISH UNLESS OTHERWISE NOTED</li> </ul>	<ul style="list-style-type: none"> <li>◆ EXTERIOR WALLS SHALL BE CONCRETE WITH STUCCO FINISH UNLESS OTHERWISE NOTED</li> <li>◆ EXTERIOR WALLS SHALL BE CONCRETE WITH STUCCO FINISH UNLESS OTHERWISE NOTED</li> <li>◆ EXTERIOR WALLS SHALL BE CONCRETE WITH STUCCO FINISH UNLESS OTHERWISE NOTED</li> <li>◆ EXTERIOR WALLS SHALL BE CONCRETE WITH STUCCO FINISH UNLESS OTHERWISE NOTED</li> <li>◆ EXTERIOR WALLS SHALL BE CONCRETE WITH STUCCO FINISH UNLESS OTHERWISE NOTED</li> <li>◆ EXTERIOR WALLS SHALL BE CONCRETE WITH STUCCO FINISH UNLESS OTHERWISE NOTED</li> <li>◆ EXTERIOR WALLS SHALL BE CONCRETE WITH STUCCO FINISH UNLESS OTHERWISE NOTED</li> <li>◆ EXTERIOR WALLS SHALL BE CONCRETE WITH STUCCO FINISH UNLESS OTHERWISE NOTED</li> <li>◆ EXTERIOR WALLS SHALL BE CONCRETE WITH STUCCO FINISH UNLESS OTHERWISE NOTED</li> <li>◆ EXTERIOR WALLS SHALL BE CONCRETE WITH STUCCO FINISH UNLESS OTHERWISE NOTED</li> <li>◆ EXTERIOR WALLS SHALL BE CONCRETE WITH STUCCO FINISH UNLESS OTHERWISE NOTED</li> <li>◆ EXTERIOR WALLS SHALL BE CONCRETE WITH STUCCO FINISH UNLESS OTHERWISE NOTED</li> </ul>
--	--	--