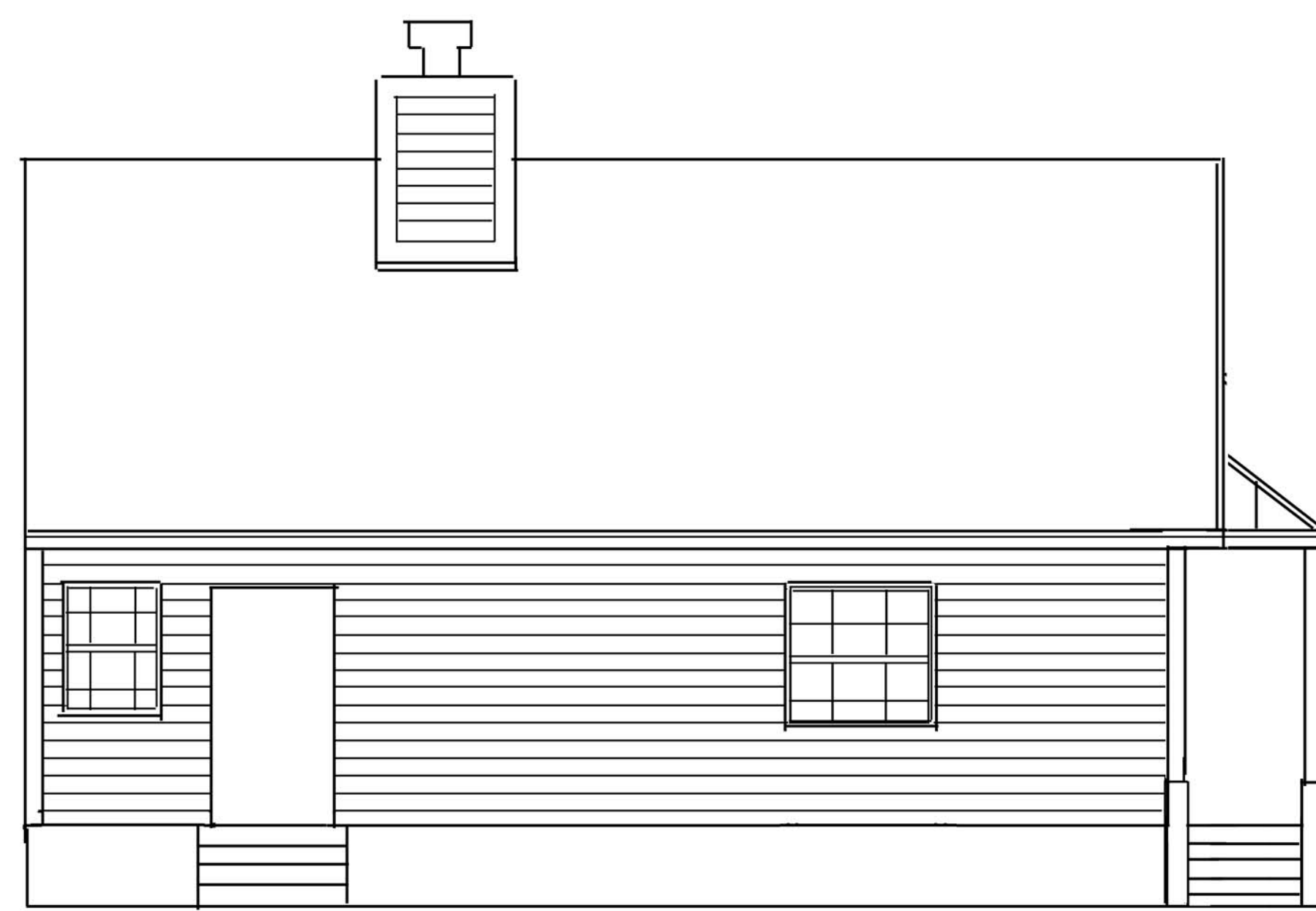
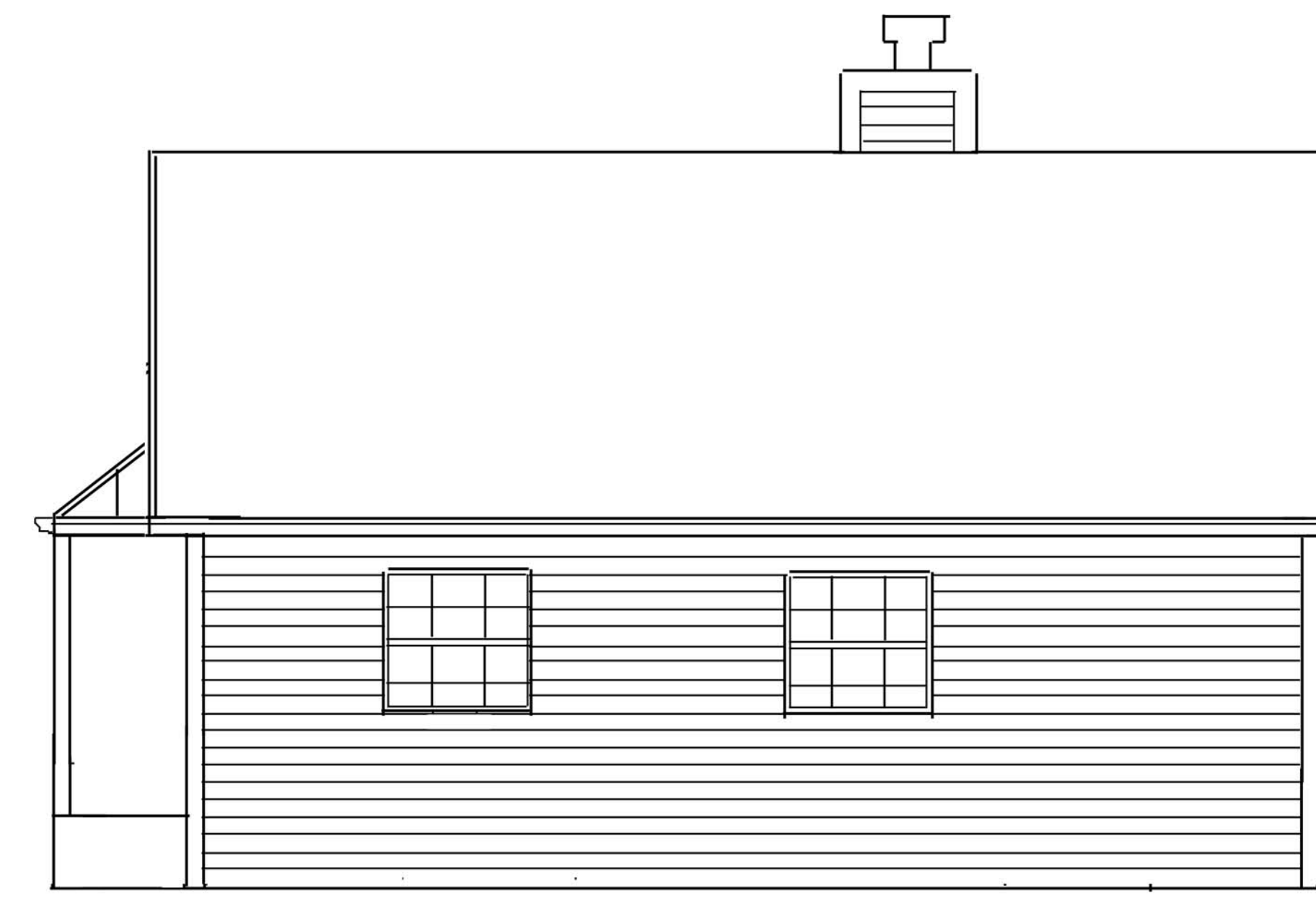


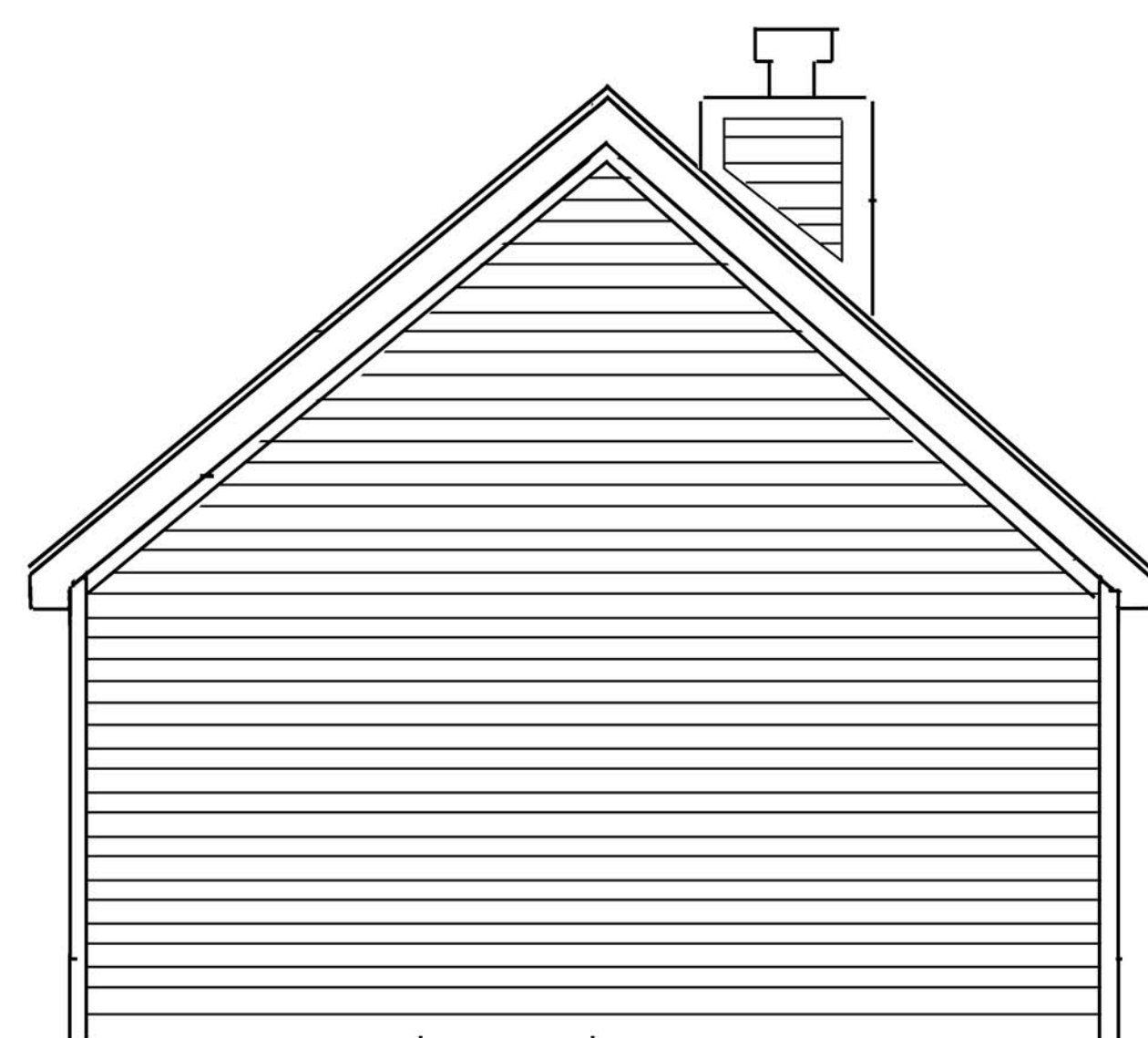
FRONT



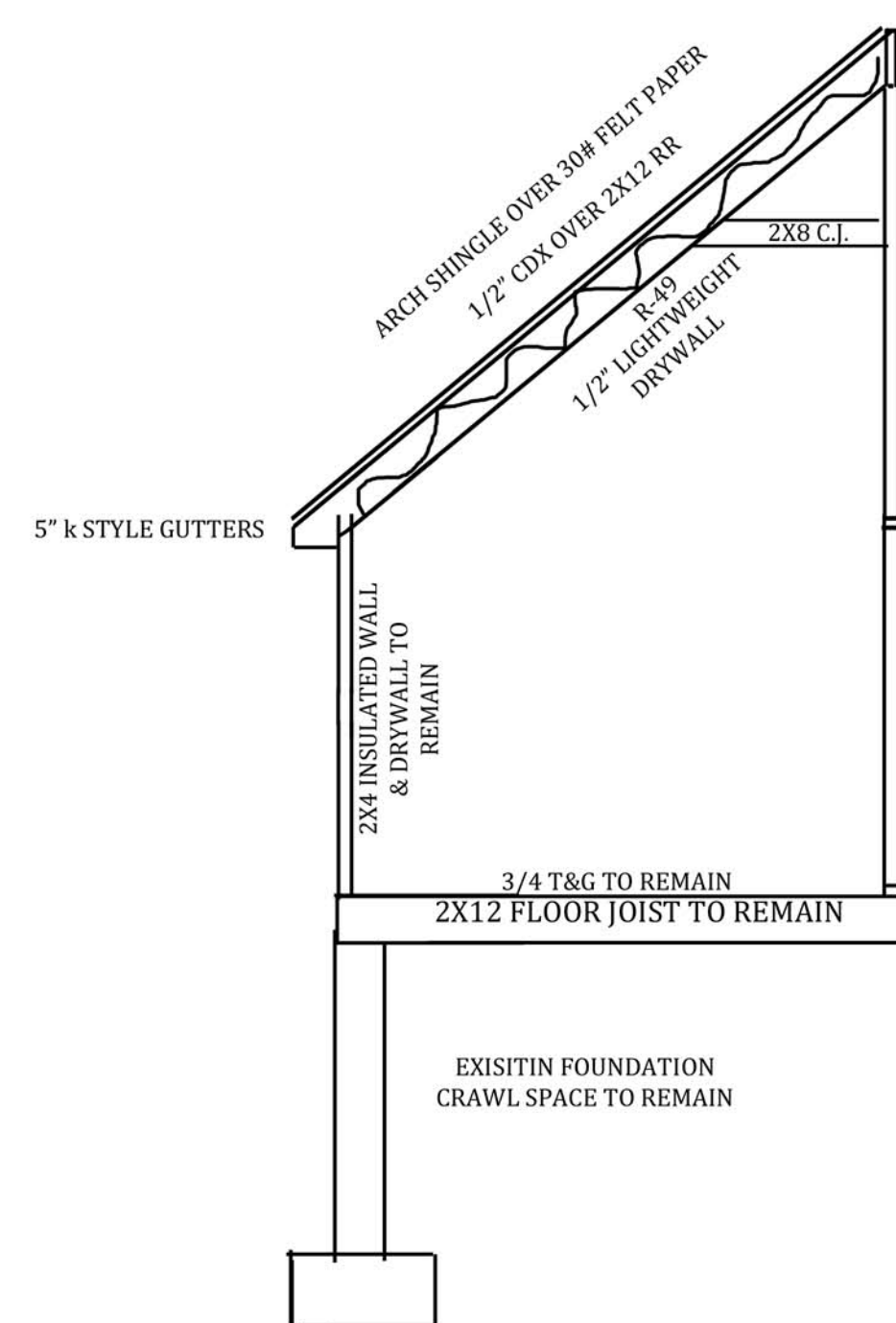
LEFT



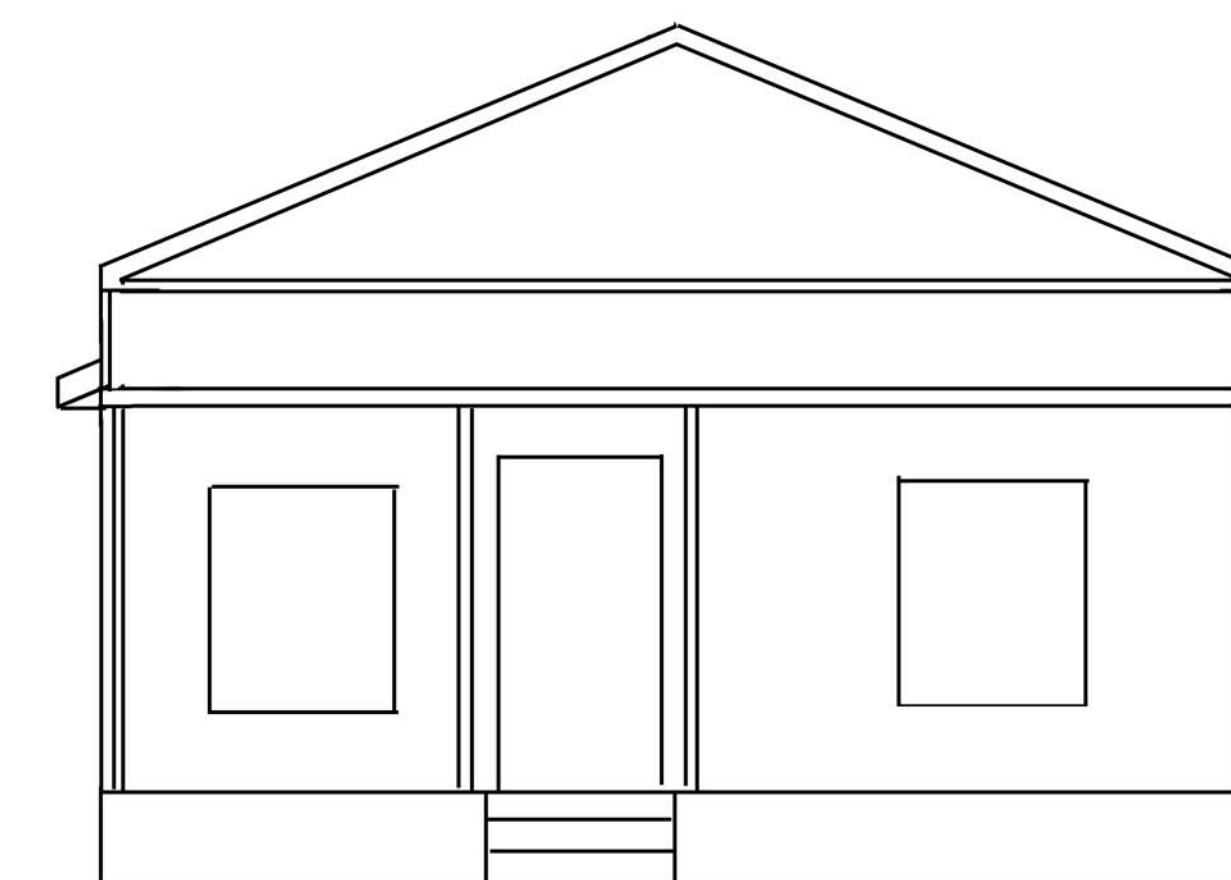
RIGHT



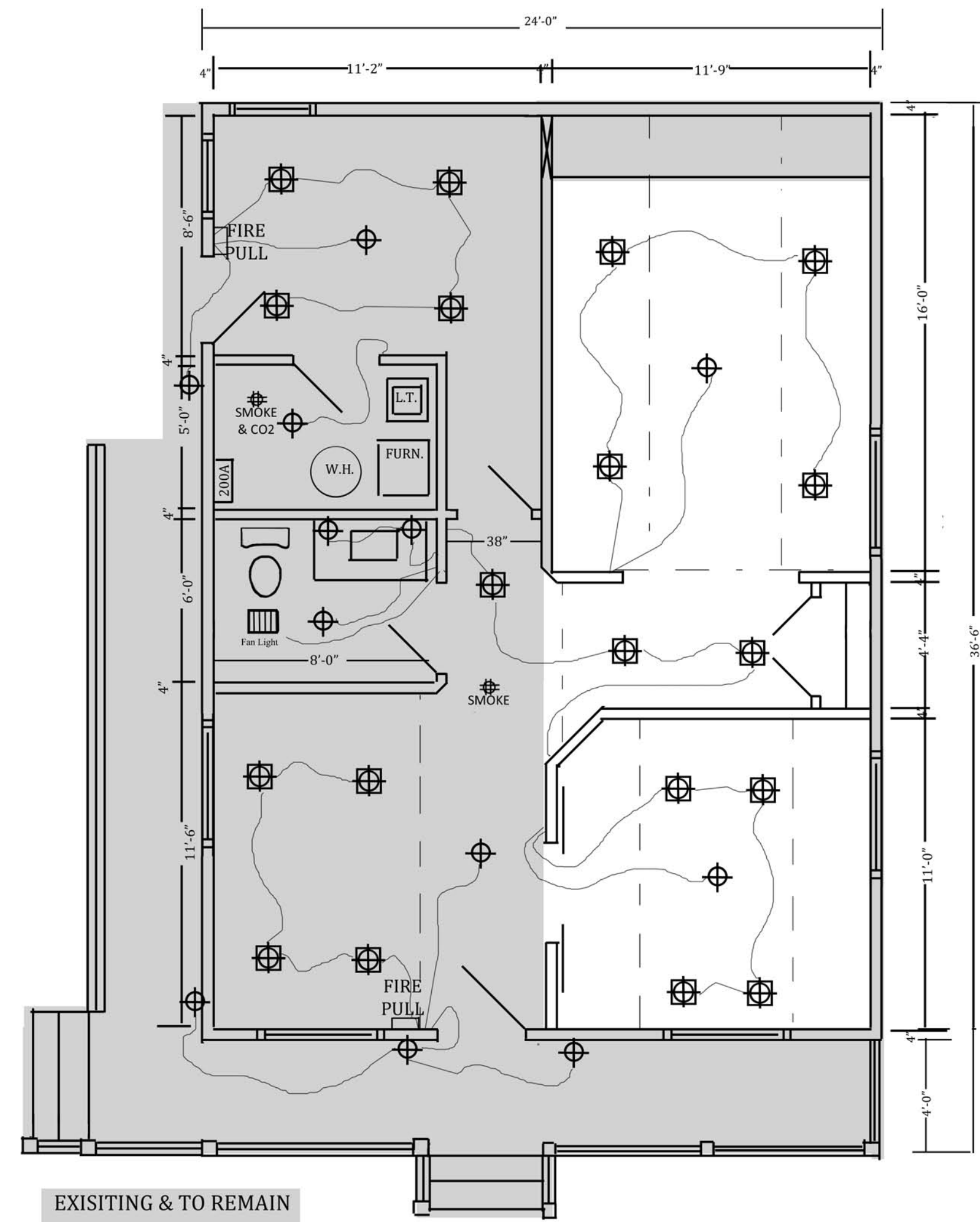
REAR



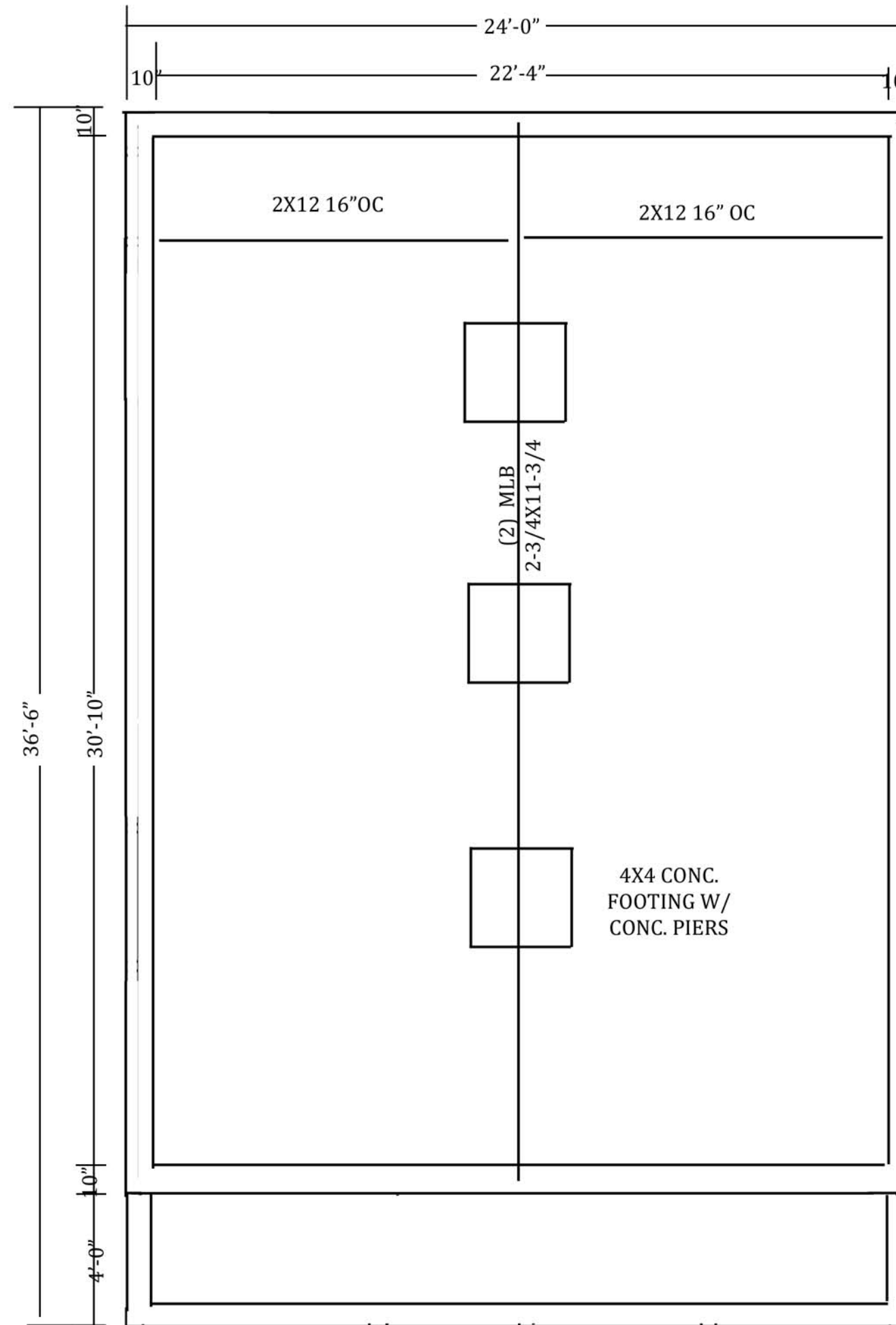
WALL SECTION



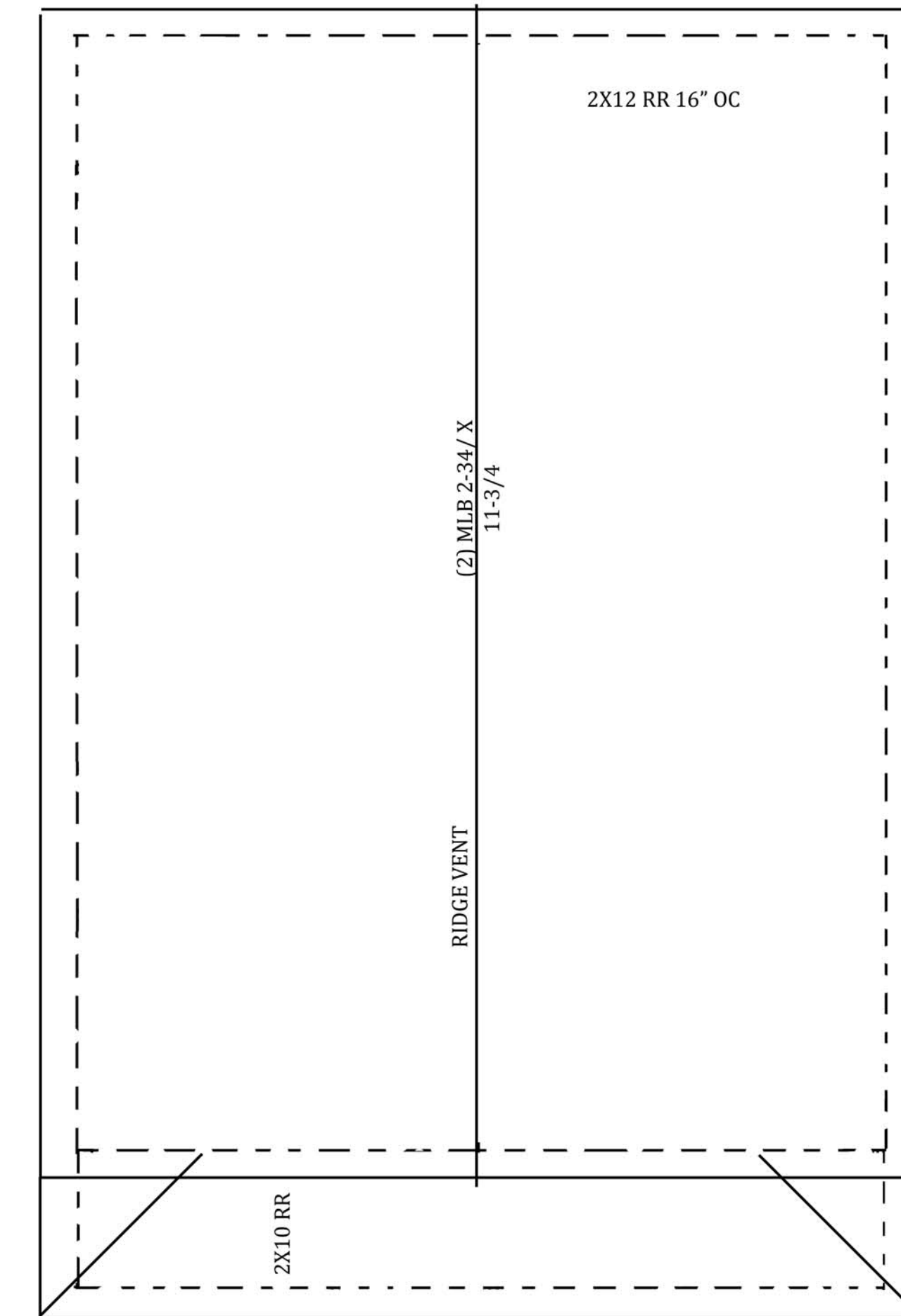
FRONT (EXISTING)



1ST FLOOR



FOUNDATION
EXISTING & TO REMAIN



ROOF
NEW

DRAFTSTOPPING REQUIRED

INSTALL 1/2" GYPSUM BOARD, 3/8" WOOD STRUCTURAL PANEL, OR EQUIVALENT WHEN THERE IS USABLE SPACE BOTH ABOVE AND BELOW THE CONCEALED SPACE OF A FLOOR/CEILING ASSEMBLY. DRAFTSTOPS SHALL BE INSTALLED SO THAT THE AREA OF CONCEALED SPACE DOES NOT EXCEED 1,000 SQ. FT. DRAFTSTOPPING SHALL DIVIDE THE CONCEALED SPACE INTO APPROX. EQUAL AREAS.

FIELD VERIFY CODE COMPLIANT FIRESTOPPING IS PROVIDED AT THE FOLLOWING LOCATIONS:

- A. CONCEALED SPACES OF STUDS, WALLS, AND PARTITIONS, INCLUDING FURRED SPACES AT THE CEILING AND FLOOR LEVEL.
- B. ALL INTERCONNECTIONS BETWEEN CONCEALED VERTICAL AND HORIZONTAL SPACES SUCH AS OCCURS AT SOFFITS, DROP CEILINGS, COVE CEILINGS, ETC.
- C. CONCEALED SPACES BETWEEN STAIR STRINGERS AT THE TOP AND BOTTOM OF THE RUN.
- D. OPENINGS AROUND PIPES, DUCTS, CHIMNEYS, VENTS AND FIREPLACES AT CEILING AND FLOOR LEVEL WITHOUT NON COMBUSTIBLE MATERIALS.

SWITCH AND OUTLET REQUIREMENTS
 ALL WALL SWITCHES CONTROLLING LIGHT FIXTURES AND FANS SHALL BE LOCATED AT A HEIGHT NOT TO EXCEED FORTY-EIGHT (48) INCHES ABOVE THE FINISHED FLOOR. HEIGHT SHALL BE DETERMINED BY MEASURING FROM THE FINISHED FLOOR TO THE CENTER OF THE SWITCH.
 ALL RECEPTACLES SHALL BE LOCATED AT A HEIGHT NOT LESS THAN FIFTEEN (15) INCHES ABOVE THE FINISHED FLOOR. HEIGHT SHALL BE DETERMINED BY MEASURING FROM THE FINISHED FLOOR TO THE CENTER OF THE RECEPTACLE. WHEN THE RECEPTACLE PLACEMENT IS PROHIBITED BY THE HEIGHT OF A WINDOW OR DESIGN FEATURE, AN ALTERNATE LOCATION CAN BE APPROVED BY THE CHIEF BUILDING OFFICIAL OR A DULY AUTHORIZED DESIGNER.

5) **IECC Table 402.1.1 INSULATION AND FENESTRATION REQUIREMENTS**
 Table 402.1.1 (41102.1.1)
 Insulation and Fenestration Requirements by Component

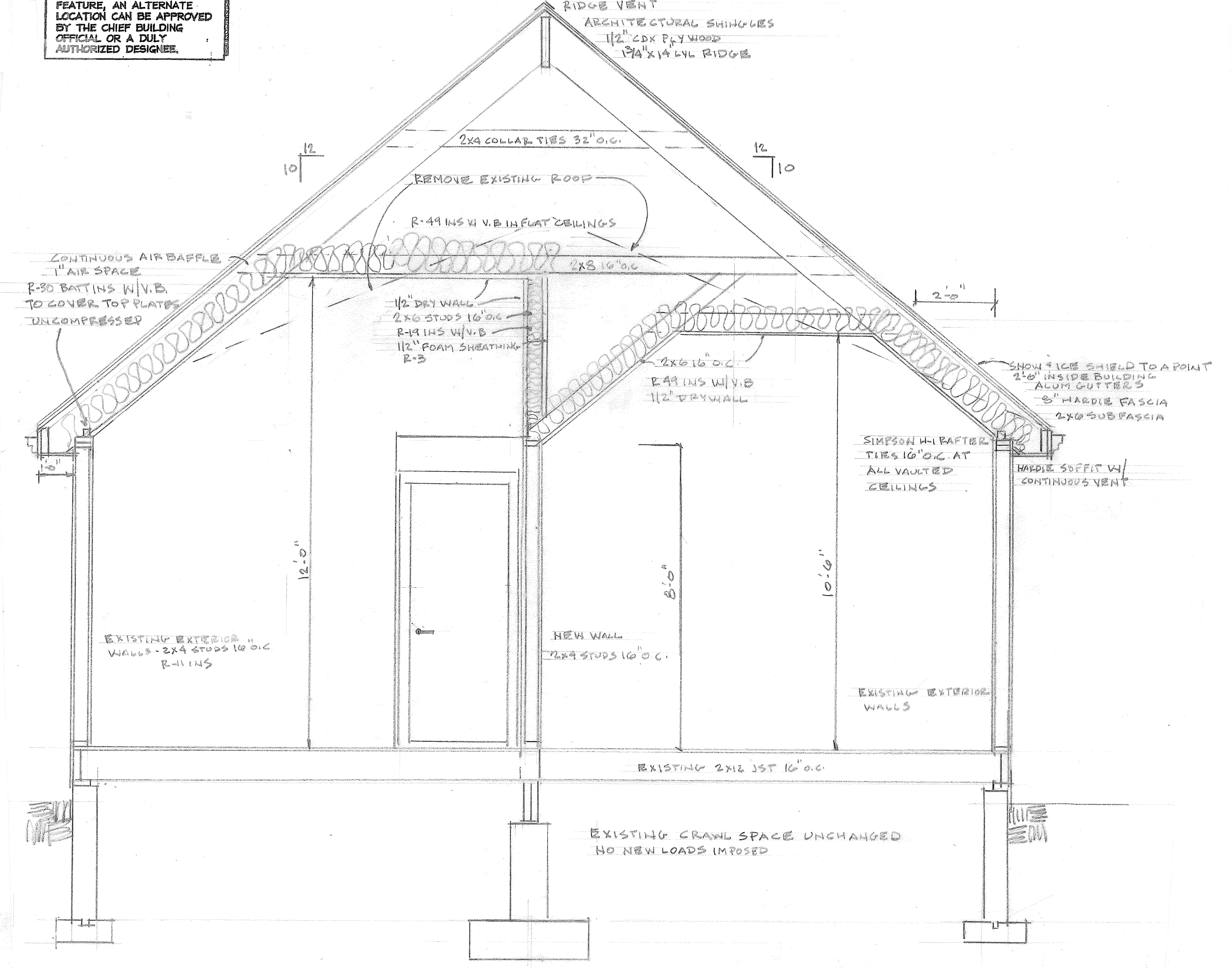
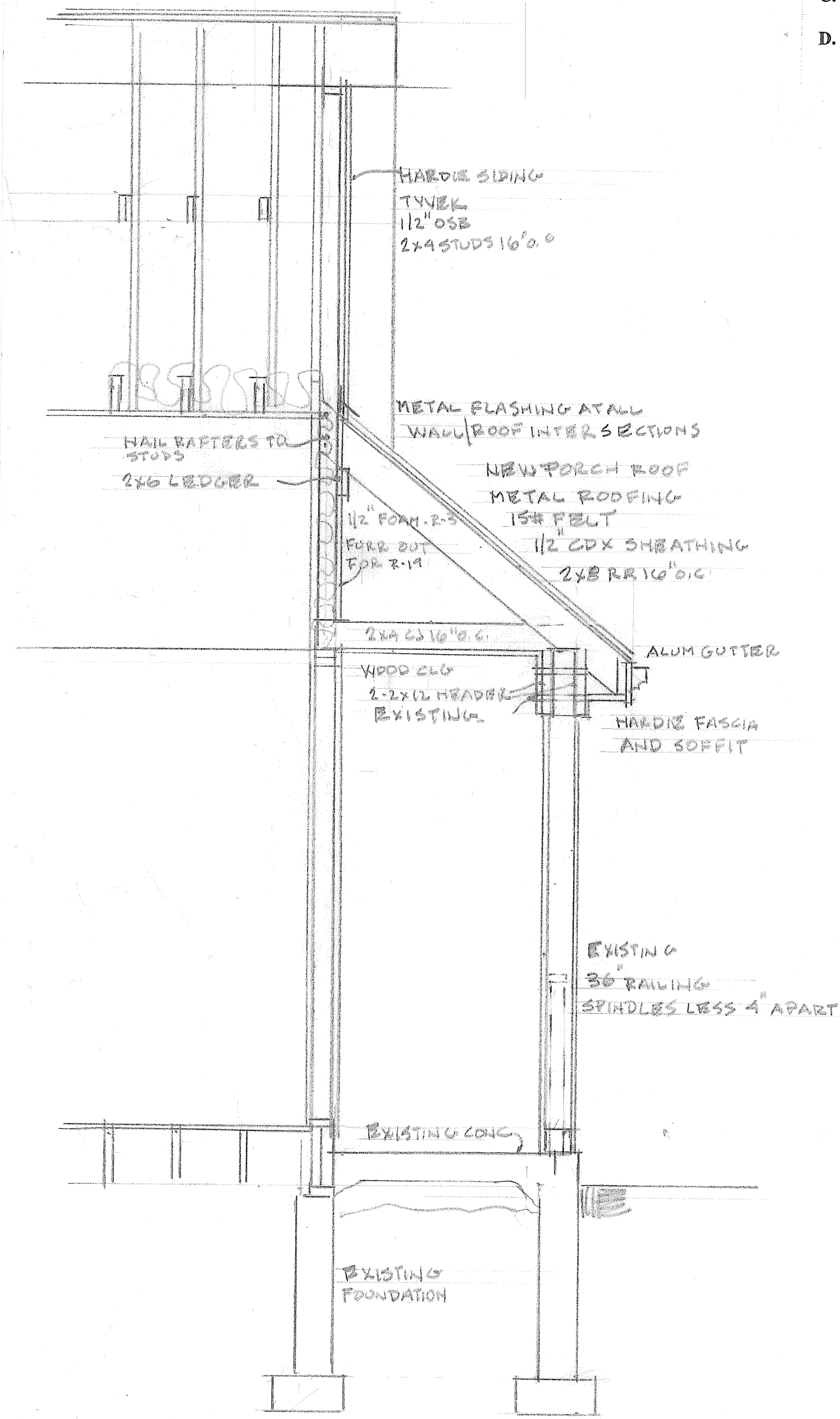
Climate Zone	Fenestration U-Factor	Skylight U-Factor	Ceiling R-Value	Wall R-Value	Mass Wall R-Value	Floor R-Value	Basement Wall R-Value	Slab R-Value/Depth	Crawl-space Wall R-Value
5	.30	.55	49	20 or 13.95	13/17	30*	10/13-Full 15/9-4	10.2H	15/19
U-Value	.30	.55	0.026	0.060	0.082	0.033	0.039		0.055

MINIMUM UNIFORMLY DISTRIBUTED LIVE LOADS(PSP)

ATTICS WITH LIMITED STORAGE	20
ATTICS WITHOUT STORAGE	10
ATTICS HABITABLE	30
DECKS	40
EXTERIOR BALCONIES	60
GUARD RAILS AND HANDRAILS	200
ROOMS OTHER THAN SLEEPING ROOMS	40
SLEEPING ROOMS	40
STAIRS	40
WIND SPEED	115 MPH

ALL HEADERS 2-2X12 UNLESS NOTED
 DOUBLE JOIST UNDER ALL PARALLEL PARTITIONS
 ALL FRAMING LUMBER TO BE HEM FIR #2

WALL, CEILING, AND FLOOR FINISHES SHALL HAVE A FLAME SPREAD INDEX NOT TO EXCEED 25 AND A SMOKE DEVELOPED INDEX NOT TO EXCEED 450



FRONT, REAR, & BATHROOM DOORS ARE 3'-0" x 6'-8" W/ADA COMPLIANT LEVER HARDWARE

BUILDING SECTION
 SCALE: 1/2" = 1'-0"

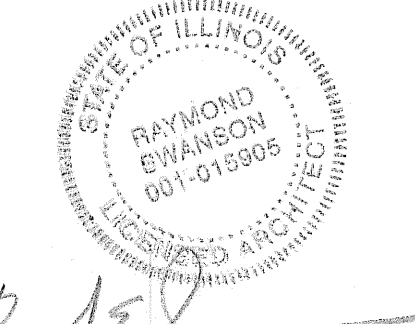
BUILDING = 750 SQ. FT.
 106 SQ. FT. OF VAULTED CEILING W/ R-30 INS
 ATTIC SQ. FT. = 742 = 160 = 582 SQ. FT. VENT REQUIRED
 RIDGE VENT = 4 SQ. FT.
 SOFFIT VENT = 5 SQ. FT.

SCOPE OF WORK:
 REMOVE ENTIRE EXISTING 5/12 PITCH ROOF
 ADD A NEW ROOF WITH A 10/12 PITCH
 ADD TWO OFFICES TO THE RIGHT SIDE OF THE BUILDING LIGHT AND OUTLET ADDITIONS

CONSTRUCTION TYPE V
 OCCUPANCY CLASSIFICATION - BUSINESS
 MAXIMUM OCCUPANCY = 1 PER 100 SQUARE FEET (8 TOTAL)

Building Codes

- 2018 INTERNATIONAL ENERGY CONSERVATION CODE
- 2018 International Building Code
- 2018 International Residential Code
- 2018 International Property Maintenance Code
- 2018 International Fire Code
- 2018 International Fuel Gas Code
- 2018 International Mechanical Code
- 2018 International Plumbing Code
- 2018 International Existing Building Code
- 2018 International Swimming Pool and Spa Code
- 2017 National Electric Code (NFPA 70)
- 2006 International Code Council Electrical Administrative Provisions
- 2018 Life Safety Code (NFPA 101)
- Illinois Energy Conservation Code, Current Edition
- National Fire Code (NFPA), Current Edition
- Illinois State Plumbing Code, Current Edition
- Illinois Accessibility Code, Current Edition
- Local Amendments per Naperville Municipal Code



Raymond Swanson
 LIC Exp 11-30-2022

REVISIONS	BY

ARCHITECTS PLUS LTD
 10 S 373 NORMANTOWN ROAD
 NAPERVILLE, IL. 60564
 630-978-7670

 2016 EAST OGDEN AVENUE
 NAPERVILLE, IL.
 BUILDING RENOVATION

 AUTUMN HOMES
 630-983-6220

DRAWN	RS
CHECKED	
DATE	2-8-2022
SCALE	
JOB NO.	22-2016
SHEET	1-a
OF ONE	SHEETS