



22 E. Chicago Avenue
Suite 200A
Naperville, IL 60540
T 630.961.1787

hitchcockdesigngroup.com

PREPARED FOR
Ram West Capital LLC
in partnership with
DJK Custom Homes
532 S Webster Street
Naperville, IL 60540

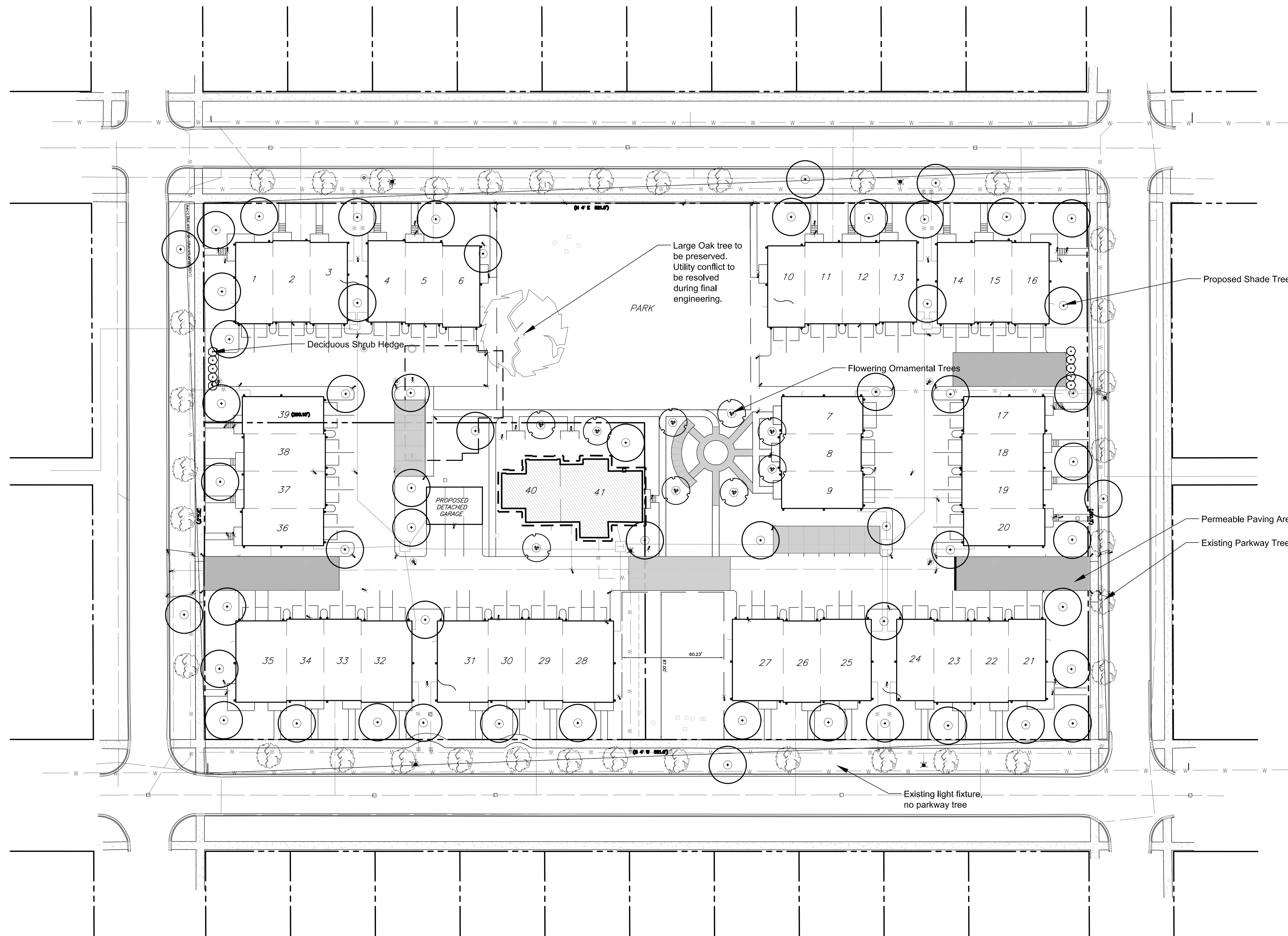
PROJECT
**Heritage Place
in Historic
Naperville**
Naperville, IL 60540

PLANTING NOTES

- Sod limit line is approximate. Seed/Sod to limits of grading and disturbance. Contractor responsible for restoration of any unauthorized disruption outside of designated construction area.
- Contractor responsible for erosion control in all sodded areas.
- Tree mulch rings in turf areas are 5 foot diameter, typical. Contractor shall provide a mulch ring around all existing trees within the limit of work. Remove all existing grass from area to be mulched and provide a typical v-trench edge.
- Bedlines are to be spade cut to a minimum depth of 3 inches unless otherwise shown on the plans. Curved bedlines are to be smooth and not segmented.
- Do not locate plants within 10' of utility structures, or within 5' horizontally of underground utility lines unless otherwise shown on the plans. Consult with Landscape Architect if these conditions exist.
- Install topsoil as required to meet finish grade and achieve positive drainage. Install 2" of soil conditioner in all planting areas. Till to a 6" depth.
- Provide 3" mulch depth for tree and shrub planting. Provide 2" mulch depth in all perennial plant beds.
- Irrigation: Provide head to head spray coverage in all turf and planting areas. New irrigation to tie into existing system. Proposed building to supply water. Provide separate irrigation submeter for SoulCycle water use. Provide shop drawings for owner approval.
- Refer to specifications for additional conditions, standards and notes.

PLANTING LEGEND

- Existing trees to remain
- Large Oak tree to be preserved
- Shade Tree, typical.
See detail for installation.
Quantity: 57, 3" Caliper
- Ornamental Tree, typical.
See detail for installation.
Quantity: 9, 6' Height



Large Oak tree to be preserved. Utility conflict to be resolved during final engineering.

Proposed Shade Trees

Flowering Ornamental Trees

Deciduous Shrub Hedge

Permeable Paving Area

Existing Parkway Trees

Existing light fixture, no parkway tree

ISSUED
October 13, 2020
REVISIONS

No	Date	Issue
1	08/14/2020	Revised per City Comments
2	09/08/2020	Revised per City Comments
3	10/13/2020	Revised per City Comments

CHECKED BY
GBR

DRAWN BY
KJB

SHEET TITLE
**Preliminary
Landscape Plan
Concept 1**

SCALE IN FEET
1" = 30'

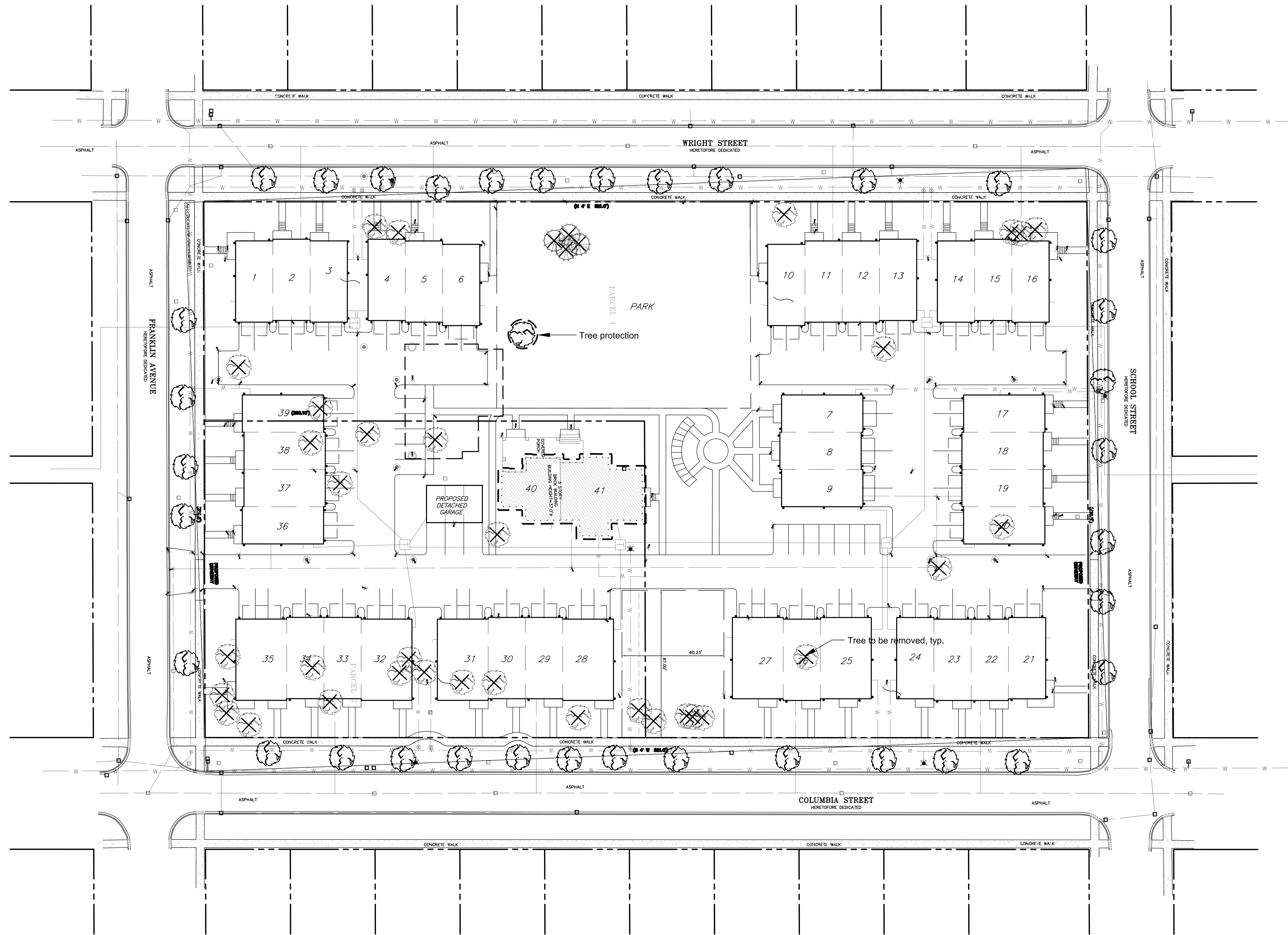
NORTH

SHEET NUMBER

L2.0

©2020 Hitchcock Design Group

PROJECT
Heritage Place
in Historic
Naperville
Naperville, IL 60540



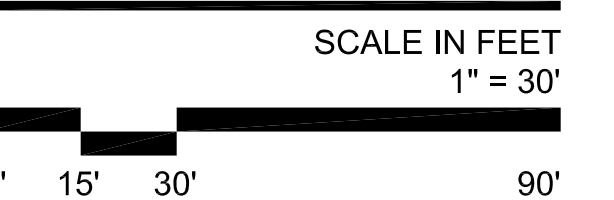
ISSUED
October 13, 2020
REVISIONS

No	Date	Issue
1	08/14/2020	Revised per City Comments
2	09/08/2020	Revised per City Comments
3	10/13/2020	Revised per City Comments

CHECKED BY
GBR

DRAWN BY
KJB

SHEET TITLE
Tree Removal Plan



NORTH

SHEET NUMBER

L1.0