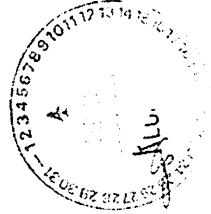


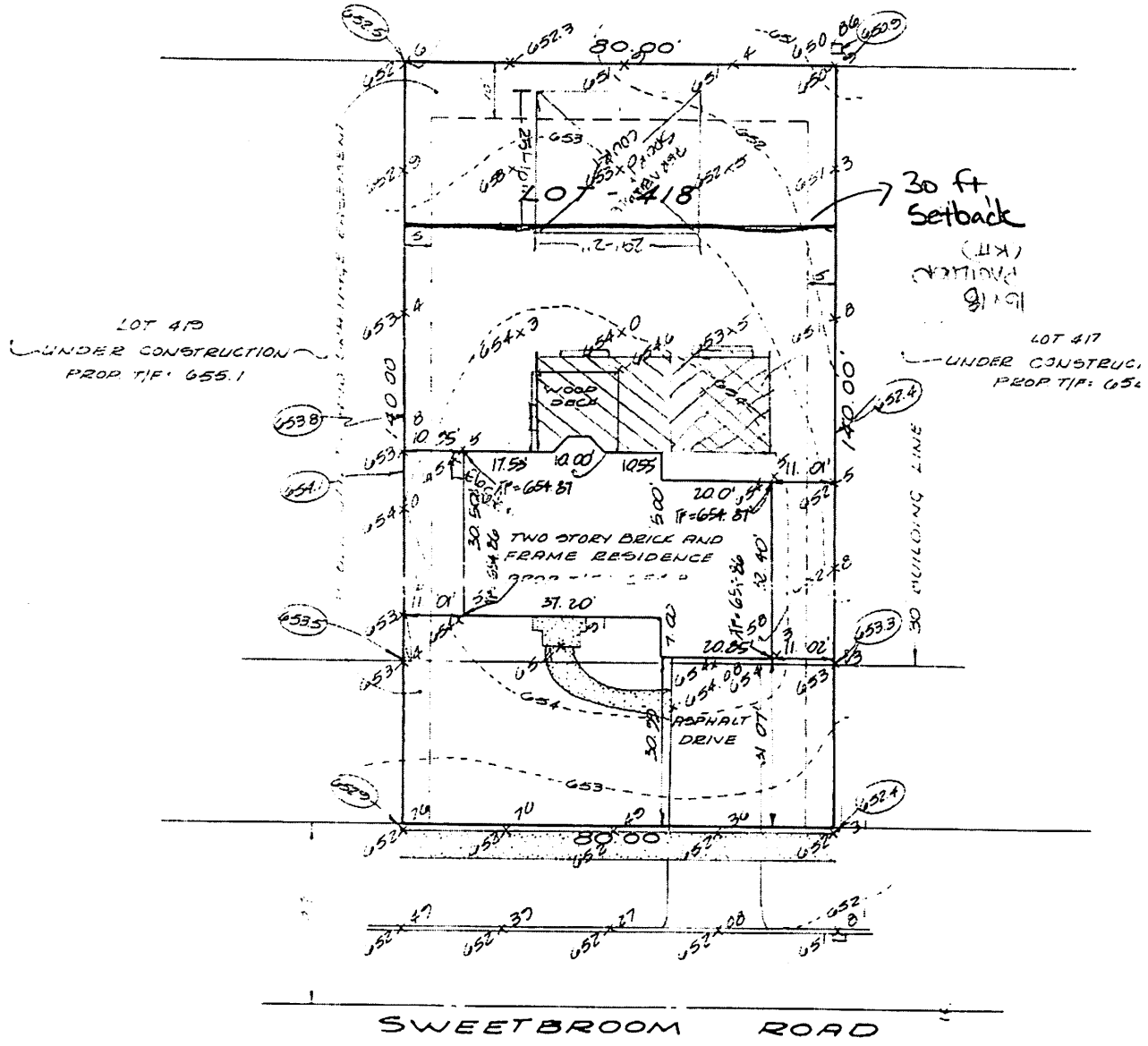
LOT 418 IN HIGH MEADOW UNIT 10, BEING A SUBDIVISION IN PART OF THE NORTHWEST QUARTER OF SECTION 22, TOWNSHIP 37 NORTH, RANGE 9 EAST OF THE THIRD PRINCIPAL MERIDIAN, WILL COUNTY, ILLINOIS.

#2031 SWEETBROOM ROAD

DEVELOPMENT SERVICES TEAM
16-3798
SEP 28 2016



Type 2 (1)
210-219
9/3



LEGEND:



- EXISTING CONTOUR
- PROPOSED GRADE

- BENCHMARK
- BONNET BOLT ON FIRE HYDRANT AT LOTS 418/419 ELEV.: 654.66
- TOP OF CURB OPPOSITE ABOVE HYDRANT ELEV.: 652.49

SCALE: 1" = 20'

NTECH CONSULTANTS, INC.

REV 08.28
PREPARED FOR: STEMBRIDGE BUILDERS DATE: 08.13.16

FILE 21023-