

Preliminary Landscape Plan

Polo Club

Naperville, Illinois

October 18, 2018

CONSULTANTS:



LANDSCAPE ARCHITECT:
 GARY R. WEBER ASSOCIATES, INC
 402 WEST LIBERTY DRIVE
 WHEATON, ILLINOIS 60187



CIVIL ENGINEER:
 CEMCON, LTD.
 2280 WHITE OAK CIRCLE, SUITE 100
 AURORA, ILLINOIS 60502



LOCATION MAP
 SCALE: 1"=600'

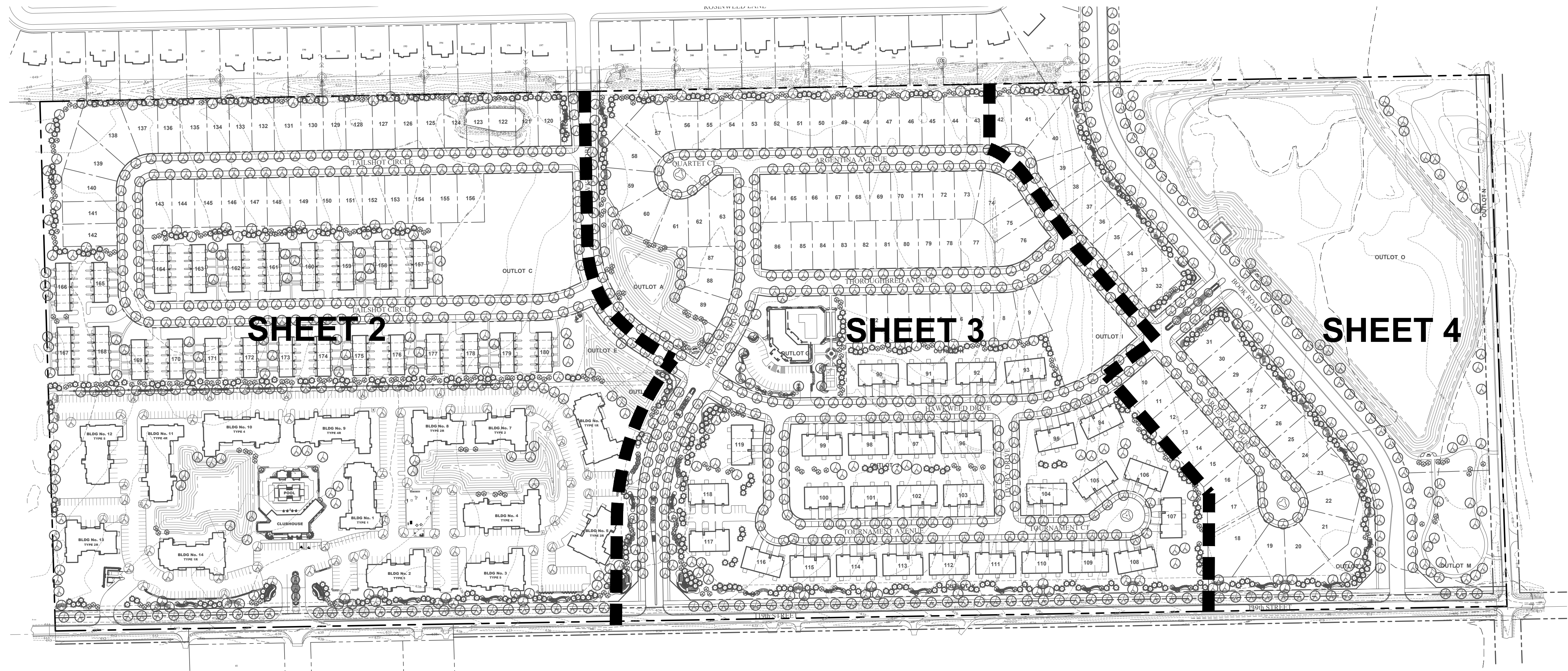
INDEX OF SHEETS

SHEET NO.	DESCRIPTION
0	COVER SHEET
1	OVERALL LANDSCAPE PLAN
2	PRELIMINARY LANDSCAPE PLAN
3	PRELIMINARY LANDSCAPE PLAN
4	PRELIMINARY LANDSCAPE PLAN
5	LANDSCAPE DETAILS
6	LANDSCAPE DETAILS
7	TYPICAL FOUNDATION LANDSCAPE PLANS
8	TREE PRESERVATION PLAN



GENERAL NOTES

- TREES SHALL BE INSTALLED A MINIMUM OF FIVE (5) FEET HORIZONTALLY FROM UNDERGROUND ELECTRICAL FEEDERS, SANITARY SEWERS, SANITARY SERVICES, WATER MAINS, AND WATER SERVICES. TREES SHALL BE INSTALLED A MINIMUM OF TEN (10) FEET HORIZONTALLY FROM UTILITY STRUCTURES AND APPURTENANCES, INCLUDING, BUT NOT LIMITED TO, MANHOLES, VALVE VAULTS, VALVE BOXES AND FIRE HYDRANTS. NO TREES, SHRUBS OR OBSTACLES WILL BE ALLOWED 10' IN FRONT OF, 5' ON THE SIDES, AND 7' TO THE REAR OF THE ELECTRICAL TRANSFORMER.
- LOCATION OF TREES MAY REQUIRE ADJUSTMENT BASED ON FINAL ENGINEERING PLANS.
- CONTRACTOR SHALL VERIFY UNDERGROUND UTILITY LINES AND IS RESPONSIBLE FOR ANY DAMAGE.
- CONTRACTOR SHALL VERIFY ALL EXISTING CONDITIONS IN THE FIELD PRIOR TO CONSTRUCTION AND SHALL NOTIFY LANDSCAPE ARCHITECT OF ANY VARIANCE.
- MATERIAL QUANTITIES SHOWN ARE FOR CONTRACTOR'S CONVENIENCE ONLY. THE CONTRACTOR MUST VERIFY ALL MATERIAL AND SUPPLY SUFFICIENT MATERIALS TO COMPLETE THE JOB PER PLAN.
- THE LANDSCAPE ARCHITECT RESERVES THE RIGHT TO INSPECT TREES AND SHRUBS EITHER AT PLACE OF GROWTH OR AT SITE BEFORE PLANTING, FOR COMPLIANCE WITH REQUIREMENTS OF VARIETY, SIZE AND QUALITY.
- WORK SHALL CONFORM TO AMERICAN STANDARD FOR NURSERY STOCK, STATE OF ILLINOIS HORTICULTURAL STANDARDS, AND LOCAL MUNICIPAL REQUIREMENTS.
- CONTRACTOR SHALL SECURE AND PAY FOR ALL PERMITS, FEES, AND INSPECTIONS NECESSARY FOR THE PROPER EXECUTION OF THIS WORK AND COMPLY WITH ALL CODES APPLICABLE TO THIS WORK.
- SEE GENERAL CONDITIONS AND SPECIFICATIONS FOR LANDSCAPE WORK FOR ADDITIONAL REQUIREMENTS.



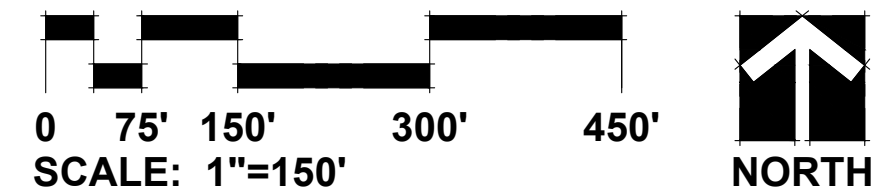
REPRESENTATIVE PLANT LIST

Key	Botanical/Common Name	Size	Remarks
	SHADE TREES		
	Acer x freemanii 'Jeffer's Red'	2 1/2" Cal.	
	Acer miyabei 'Morton'	2 1/2" Cal.	
	Acer saccharum 'Green Mountain'	2 1/2" Cal.	
	Celtis occidentalis	2 1/2" Cal.	
	Gleditsia triacanthos var. inermis 'Skycole'	2 1/2" Cal.	
	Platanus acerifolia 'Exclamation'	2 1/2" Cal.	
	Quercus bicolor	2 1/2" Cal.	
	Quercus rubra	2 1/2" Cal.	
	Quercus macrocarpa	2 1/2" Cal.	
	Tilia americana 'Redmond'	2 1/2" Cal.	
	Tilia cordata 'Greenspire'	2 1/2" Cal.	
	Ulmus carpinifolia 'New Horizon'	2 1/2" Cal.	
	ORNAMENTAL TREES		
	Amelanchier grandiflora	6' Tall	Multi-Stem
	Betula nigra	6' Tall	Multi-Stem
	Cercis canadensis	6' Tall	Multi-Stem
	Crataegus crus-galli inermis	6' Tall	Multi-Stem
	Malus 'Prairifire'	6' Tall	Multi-Stem
	Syringa reticulata 'Ivory Silk'	6' Tall	Multi-Stem

Key	Botanical/Common Name	Size	Remarks
	EVERGREEN TREES		
	Abies concolor	6' Tall	
	Picea glauca 'Densata'	6' Tall	
	Picea pungens	6' Tall	
	Picea mariana	6' Tall	
	DECIDUOUS SHRUBS		
	Cornus alba 'Baillhala'	30" Tall	3' O.C.
	Cornus sanguinea 'Cata'	24" Tall	3' O.C.
	Itea virginica 'Sprich'	24" Tall	3' O.C.
	Hydrangea macrophylla 'Bailmer'	24" Tall	3' O.C.
	Rosa 'Radcon'	24" Tall	3' O.C.
	Syringa meyeri 'Palibin'	24" Tall	4' O.C.
	Viburnum dentatum	36" Tall	5' O.C.
	Viburnum trilobum 'Hah's'	36" Tall	4' O.C.
	EVERGREEN SHRUBS		
	Juniperus chinensis v. sargentii 'Viridis'	24" Wide	5' O.C.
	Juniperus chinensis 'Seagreen'	30" Wide	4' O.C.
	Juniperus chinensis 'Kallays Compact'	24" Wide	4' O.C.

Key	Botanical/Common Name	Size	Remarks
	PERENNIALS AND ORNAMENTAL GRASSES		
	Allium 'Summer Beauty'	#1	18" O.C.
	Calamagrostis x acutiflora 'Karl Foerster'	#2	24" O.C.
	Hemerocallis 'Happy Returns'	#1	18" O.C.
	Hemerocallis 'Rosy Returns'	#1	24" O.C.
	Panicum virgatum 'Northwind'	#2	24" O.C.
	Pennisetum alopecuroides 'Hameln'	#2	24" O.C.
	Phlox 'Forever Pink'	#1	18" O.C.
	Perovskia atriplicifolia 'Little Spire'	#1	18" O.C.
	Rudbeckia fulgida 'Goldsturm'	#1	18" O.C.
	Sporobolus heterolepis	#1	18" O.C.

OVERALL LANDSCAPE PLAN



NOTE: PARKWAY TREES TO BE ADJUSTED AROUND UTILITIES ON FINAL LANDSCAPE PLANS.

GRWA
GARY R. WEBER ASSOCIATES, INC.
 LAND PLANNING
 ECOLOGICAL CONSULTING
 LANDSCAPE ARCHITECTURE
 402 WEST LIBERTY DRIVE
 WHEATON, ILLINOIS 60187
 PHONE: 630-668-7197

CLIENTS
D.R. HORTON
America's Builder
 750 E. BUNKER COURT, SUITE 500
 VERNON HILLS, IL 60061
OCULUS DEVELOPMENT
 1202 W. MONROE STREET
 CHICAGO, IL 60607
 ENGINEER:
CEMCON, LTD.
 2280 WHITE OAK CIR, SUITE 100
 AURORA, ILLINOIS 60502

POLO CLUB
 NAPERVILLE, ILLINOIS
OVERALL LANDSCAPE PLAN

REVISIONS	DATE
7	10.18.18
6	10.02.18
5	9.28.18
4	7.30.18
3	7.06.18
2	6.04.18
1	5.15.18

DATE	3.26.18
PROJECT NO.	DR1705
DRAWN	MGM
CHECKED	JCT
SHEET NO.	

1 OF 8



NATIVE SEED LEGEND

☒ NATIVE SEED MIX

MATCH LINE - SEE SHEET 2

MATCH LINE - SEE SHEET 4

MATCH LINE - SEE SHEET 2

MATCH LINE - SEE SHEET 4

OVERLOOK 2 - SEE
DETAIL SHEET 5
MAIN ENTRANCE
SEE DETAIL SHEET 6

NOTE: PARKWAY TREES TO BE
ADJUSTED AROUND UTILITIES ON
FINAL LANDSCAPE PLANS.

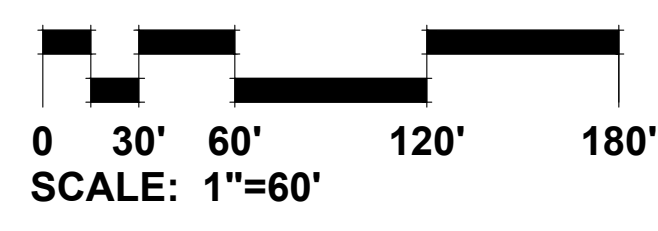


EXHIBIT F



**GARY R. WEBER
ASSOCIATES, INC.**
LAND PLANNING
ECOLOGICAL CONSULTING
LANDSCAPE ARCHITECTURE
402 WEST LIBERTY DRIVE
WHEATON, ILLINOIS 60187
PHONE: 630-668-7197

CLIENTS
D.R. HORTON
America's Builder
750 E. BUNKER COURT, SUITE 500
VERNON HILLS, IL 60061
OCULUS DEVELOPMENT
1202 W. MONROE STREET
CHICAGO, IL 60607
ENGINEER:
CEMCON, LTD.
2280 WHITE OAK CIR, SUITE 100
AURORA, ILLINOIS 60502

POLO CLUB
NAPERVILLE, ILLINOIS
PRELIMINARY LANDSCAPE PLAN

NO.	DATE	REVISIONS
7	10.18.18	
6	10.02.18	
5	9.28.18	
4	7.30.18	
3	7.06.18	
2	6.04.18	
1	5.15.18	

DATE 3.26.18
PROJECT NO. DR1705
DRAWN MGM
CHECKED JCT
SHEET NO.

CITY PROJECT NUMBER: #18-10000022

NATIVE SEED LEGEND

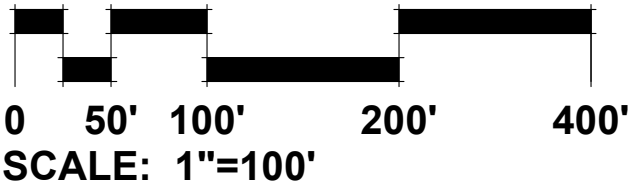
☒ NATIVE SEED MIX

- NOTE:
 1. PARKWAY TREES TO BE ADJUSTED AROUND UTILITIES ON FINAL LANDSCAPE PLANS.
 2. PARKWAY TREES TO CONTINUE ON BOTH SIDES OF BOOK ROAD TO 111TH STREET SPACED 40' O.C. PARKWAY TREES TO BE LOCATED ON FINAL LANDSCAPE PLANS.

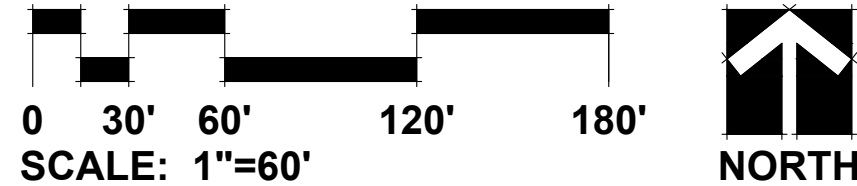
BOOK RD CONT. TO 111TH STREET



BOOK ROAD EXTENSION



LANDSCAPE PLAN



MATCHLINE A

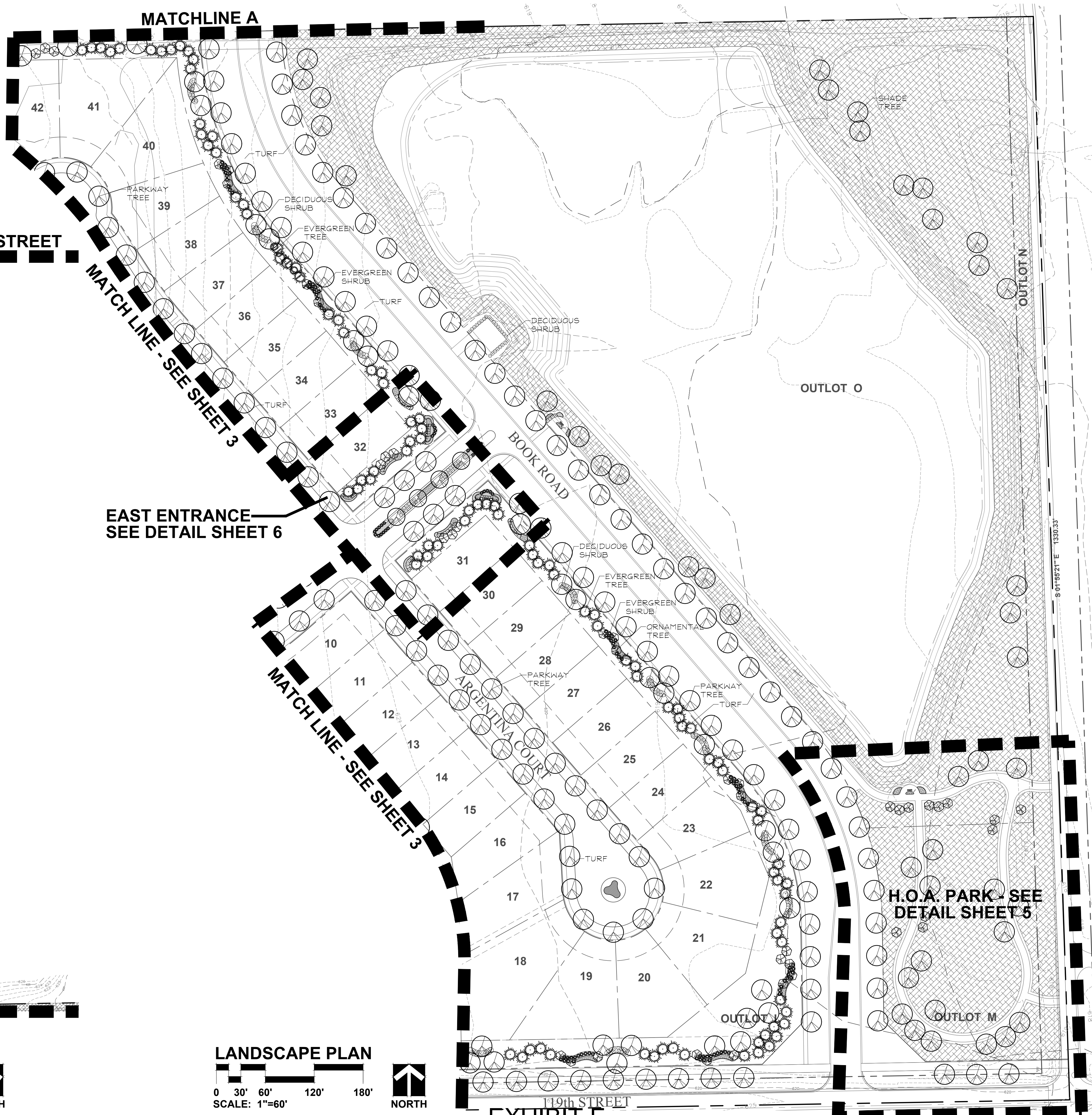
MATCH LINE - SEE SHEET 3

EAST ENTRANCE
SEE DETAIL SHEET 6

MATCH LINE - SEE SHEET 3

H.O.A. PARK - SEE
DETAIL SHEET 5

EXHIBIT F



GARY R. WEBER ASSOCIATES, INC.
 LAND PLANNING
 ECOLOGICAL CONSULTING
 LANDSCAPE ARCHITECTURE
 402 WEST LIBERTY DRIVE
 WHEATON, ILLINOIS 60187
 PHONE: 630-668-7197

CLIENTS

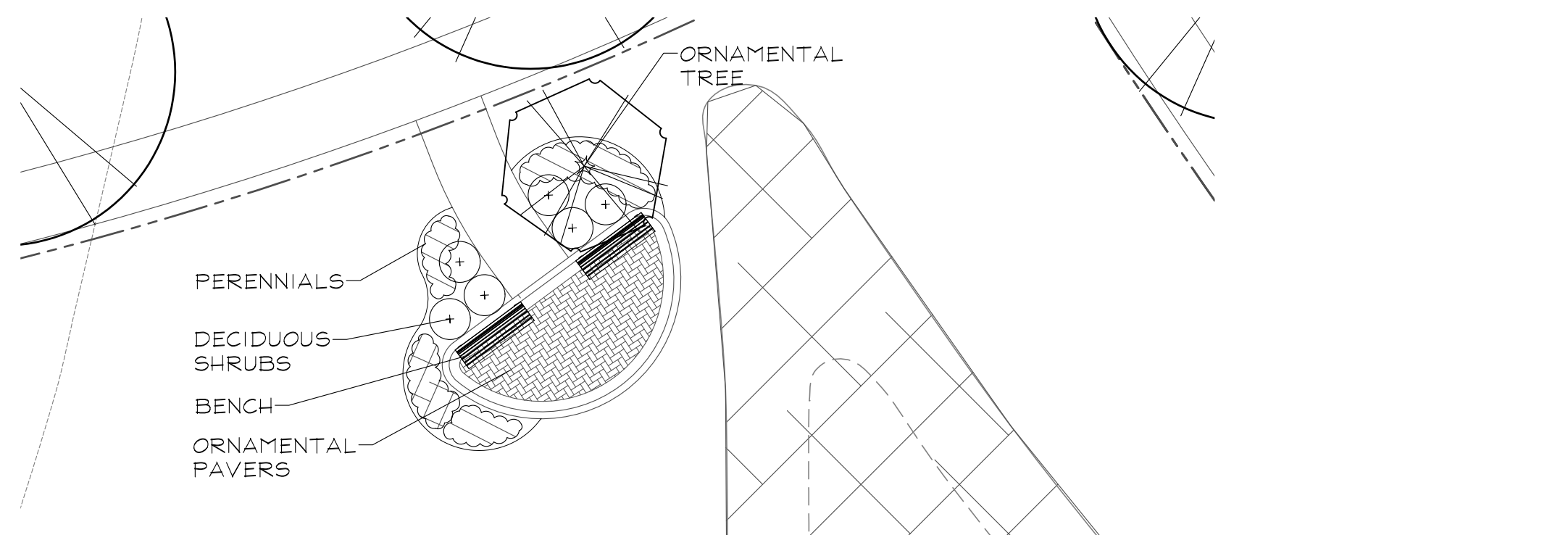
D.R. HORTON
America's Builder
 750 E. BUNKER COURT, SUITE 500
 VERNON HILLS, IL 60061
OCULUS DEVELOPMENT
 1202 W. MONROE STREET
 CHICAGO, IL 60607
 ENGINEER
CEMCON, LTD.
 2280 WHITE OAK CIR, SUITE 100
 AURORA, ILLINOIS 60502

POLO CLUB
 NAPERVILLE, ILLINOIS
PRELIMINARY LANDSCAPE PLAN

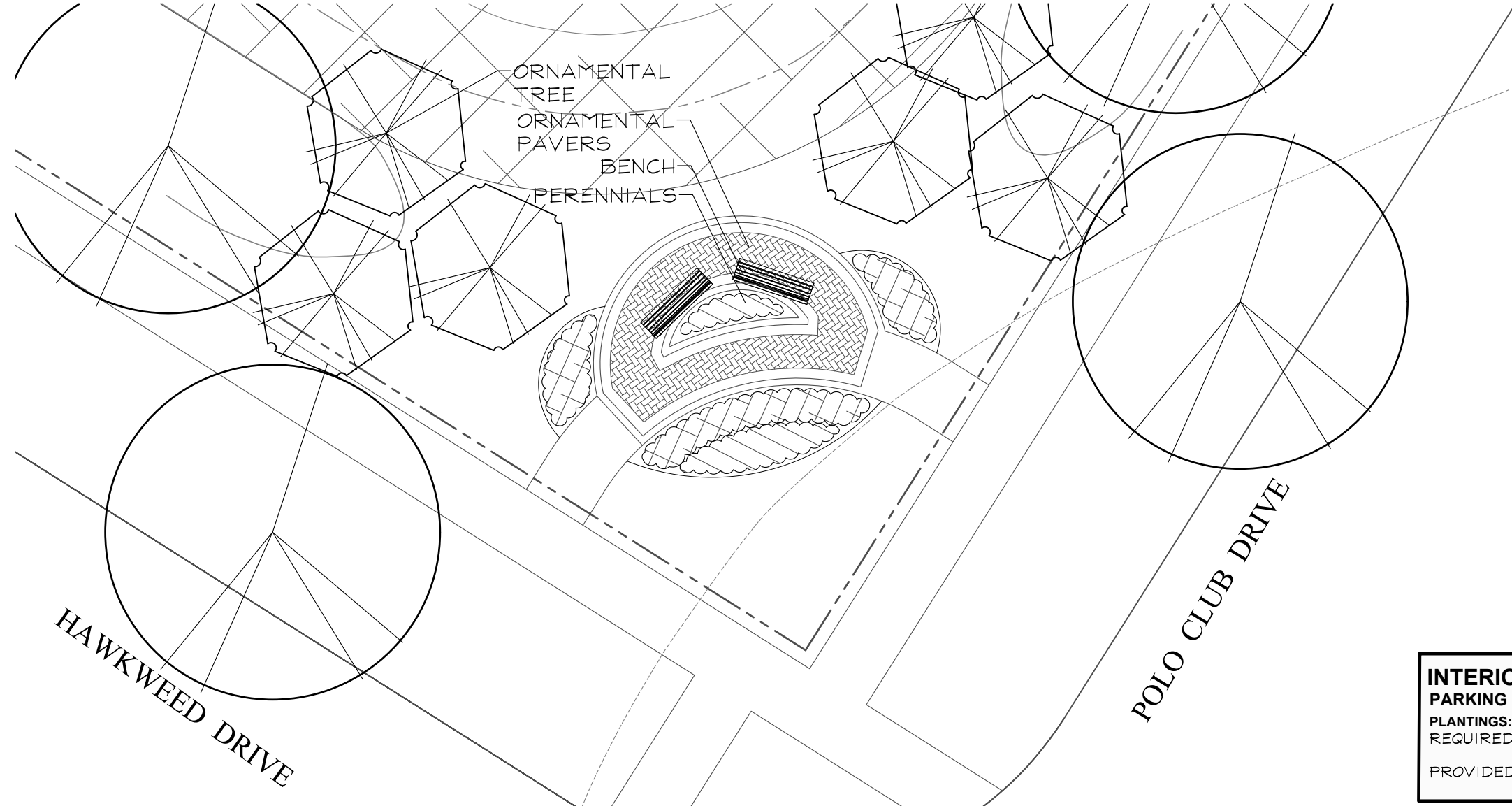
REVISIONS	DATE
7	10.18.18
6	10.02.18
5	9.28.18
4	7.30.18
3	7.06.18
2	6.04.18
1	5.15.18

DATE 3.26.18
 PROJECT NO. DR1705
 DRAWN MGM
 CHECKED JCT
 SHEET NO.

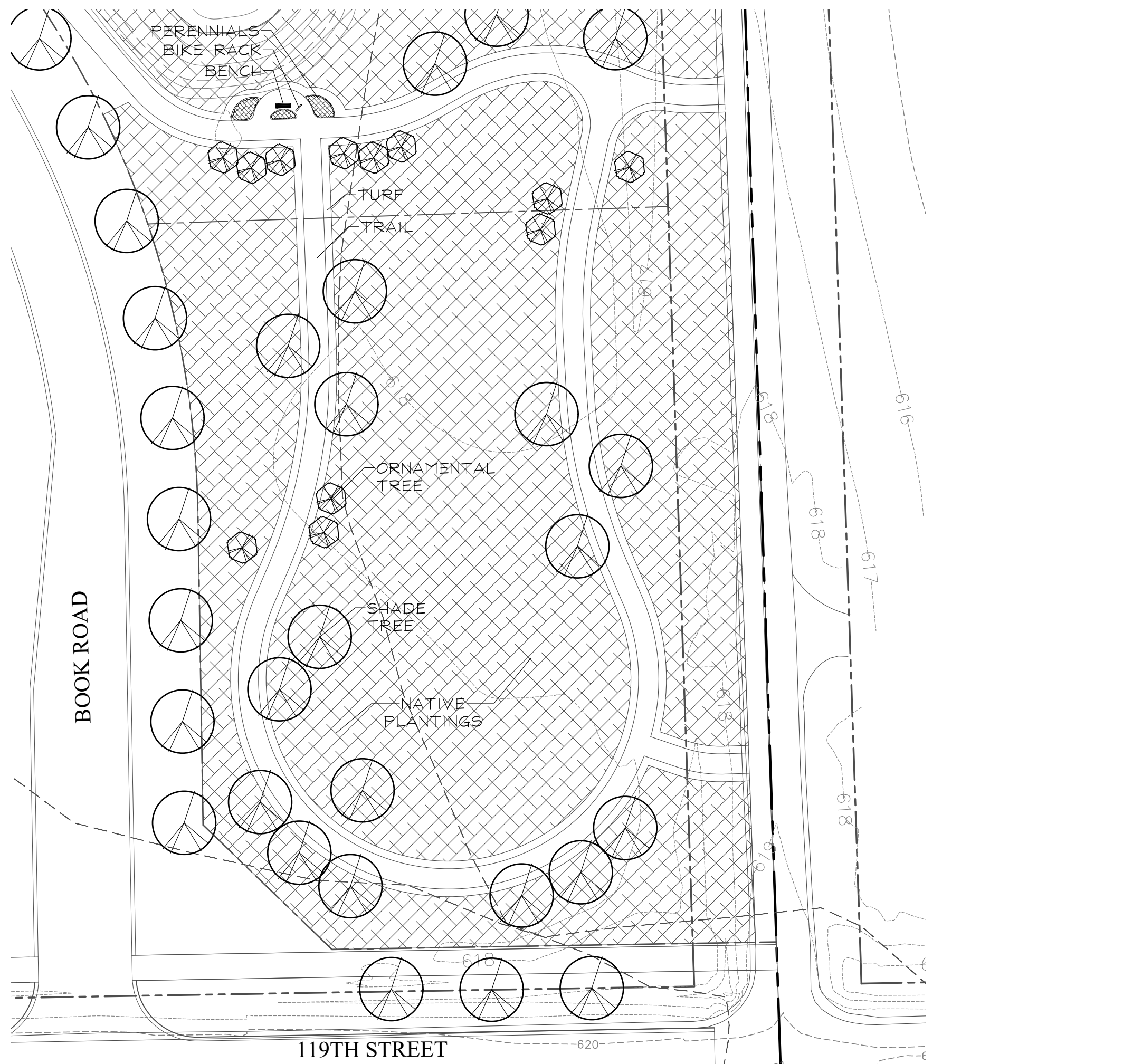
CITY PROJECT NUMBER: #18-10000022



OVERLOOK 1 LANDSCAPE DETAIL
SCALE: 1"=10'



OVERLOOK 2 LANDSCAPE DETAIL
SCALE: 1"=10'

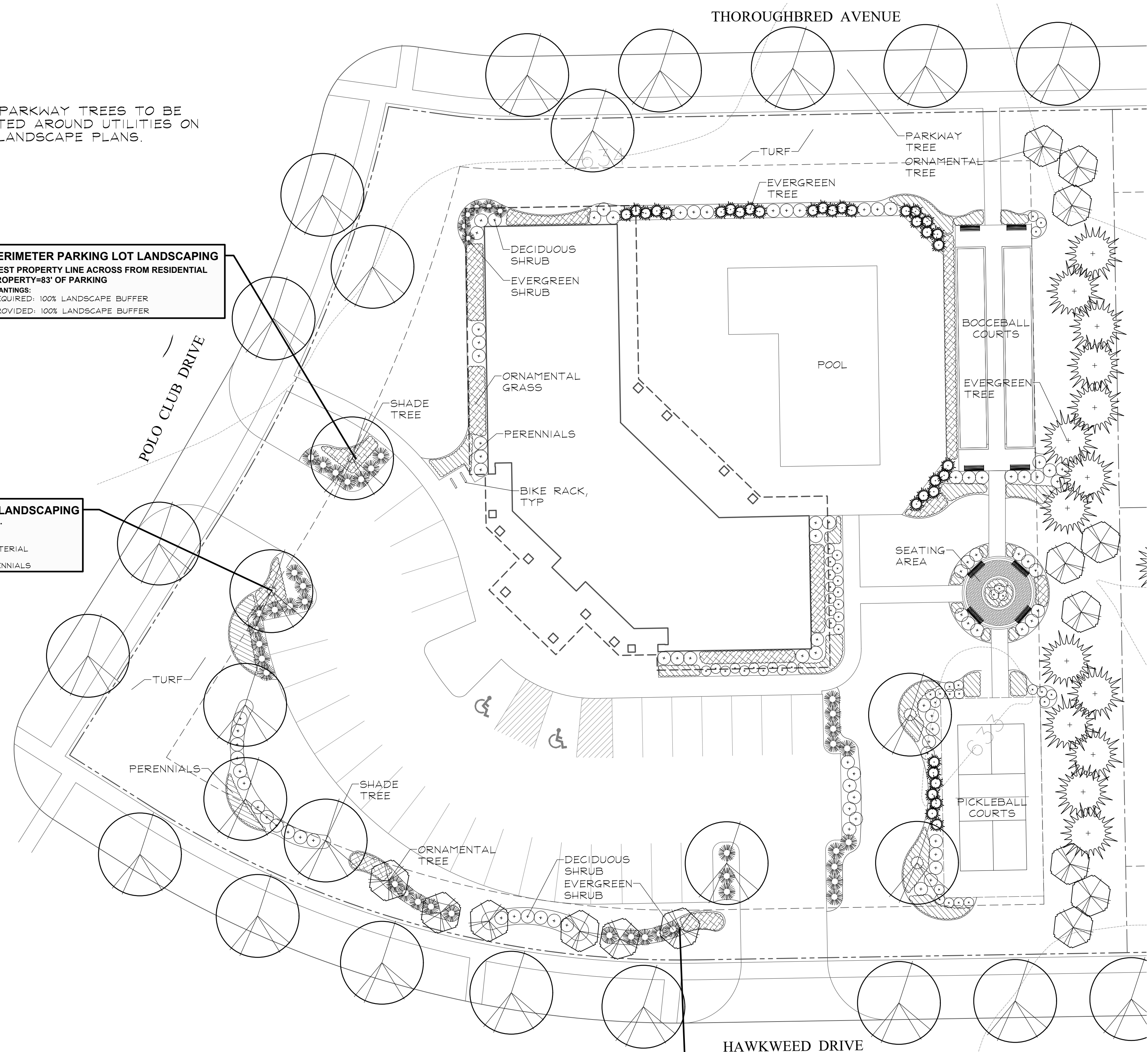


H.O.A. PARK DETAIL
SCALE: 1"=40'

NOTE: PARKWAY TREES TO BE ADJUSTED AROUND UTILITIES ON FINAL LANDSCAPE PLANS.

PERIMETER PARKING LOT LANDSCAPING
WEST PROPERTY LINE ACROSS FROM RESIDENTIAL PROPERTY=83' OF PARKING
PLANTINGS:
REQUIRED: 100% LANDSCAPE BUFFER
PROVIDED: 100% LANDSCAPE BUFFER

INTERIOR PARKING LOT LANDSCAPING
PARKING ISLAND AREA = 650 S.F.
PLANTINGS:
REQUIRED: 5 SHADE TREES
50% LIVE PLANT MATERIAL
PROVIDED: 5 SHADE TREES
100% SHRUBS & PERENNIALS



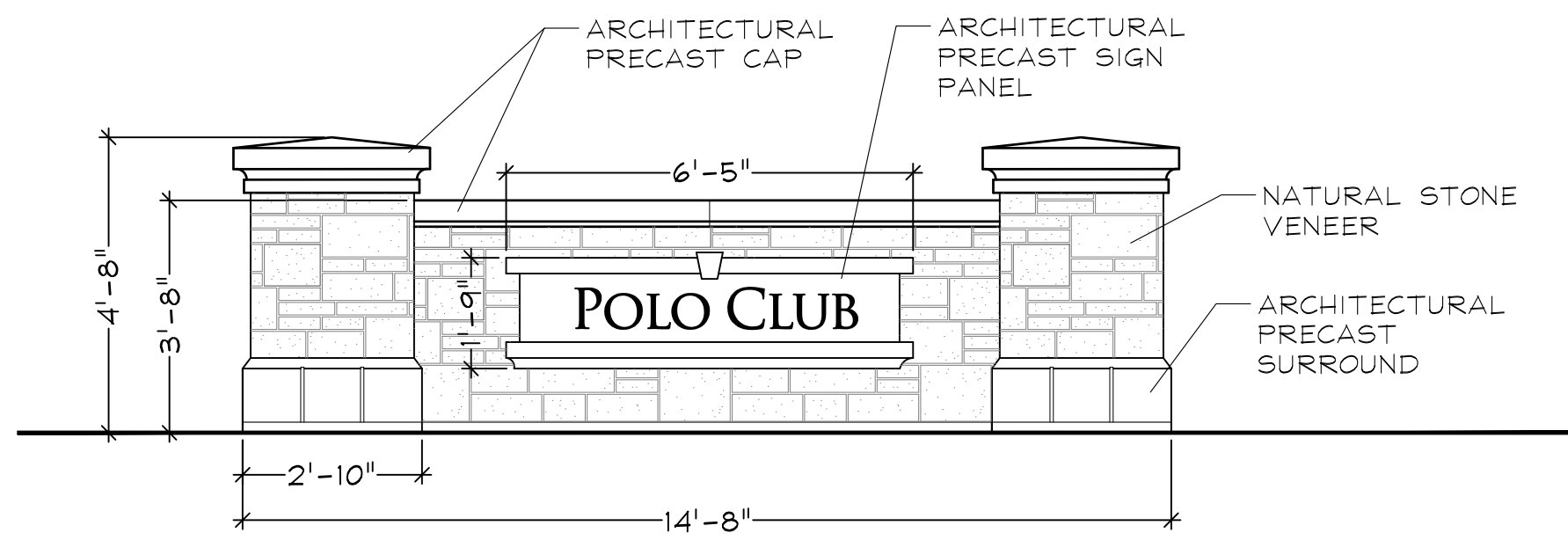
CLUB LANDSCAPE DETAIL
SCALE: 1"=20'

PERIMETER PARKING LOT LANDSCAPING
SOUTH PROPERTY LINE ACROSS FROM RESIDENTIAL PROPERTY=206' OF PARKING
PLANTINGS:
REQUIRED: 100% LANDSCAPE BUFFER
PROVIDED: 100% LANDSCAPE BUFFER

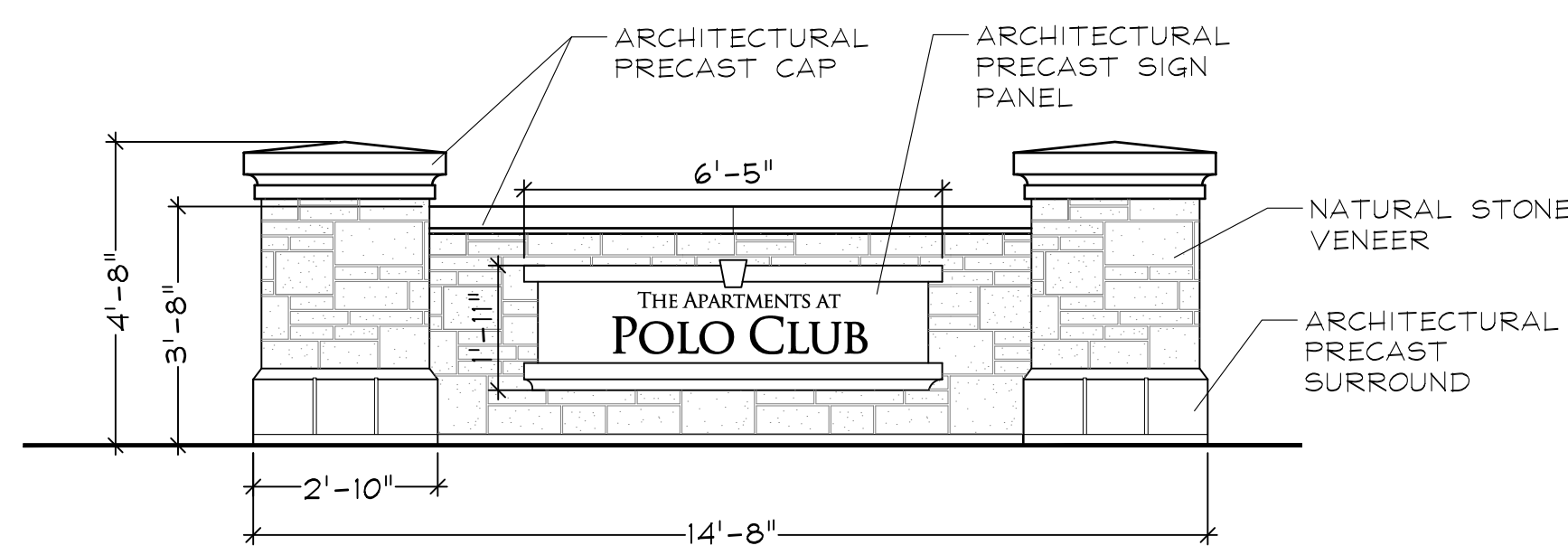
POLO CLUB
NAPERVILLE, ILLINOIS
LANDSCAPE DETAILS

REVISIONS	
7	10.18.18
6	10.02.18
5	9.28.18
4	7.30.18
3	7.06.18
2	6.04.18
1	5.15.18

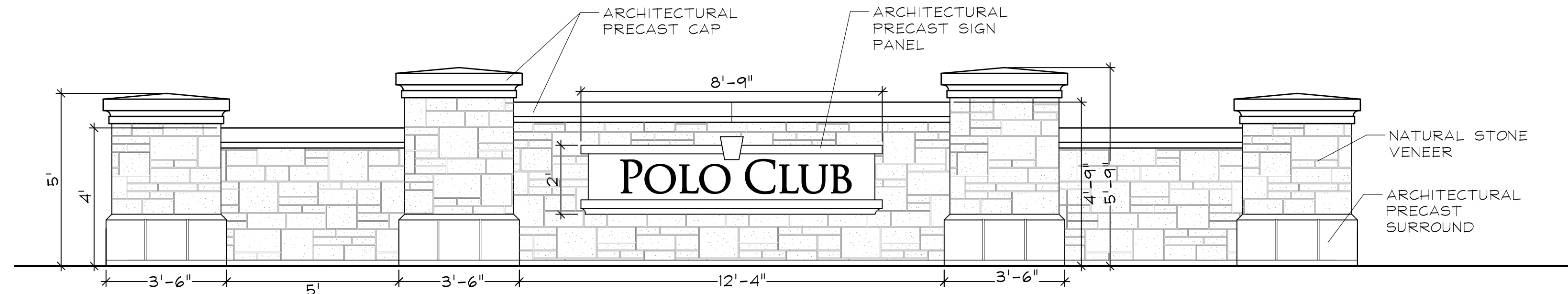
DATE	3.26.18
PROJECT NO.	DR1705
DRAWN	MGM
CHECKED	JCT
SHEET NO.	



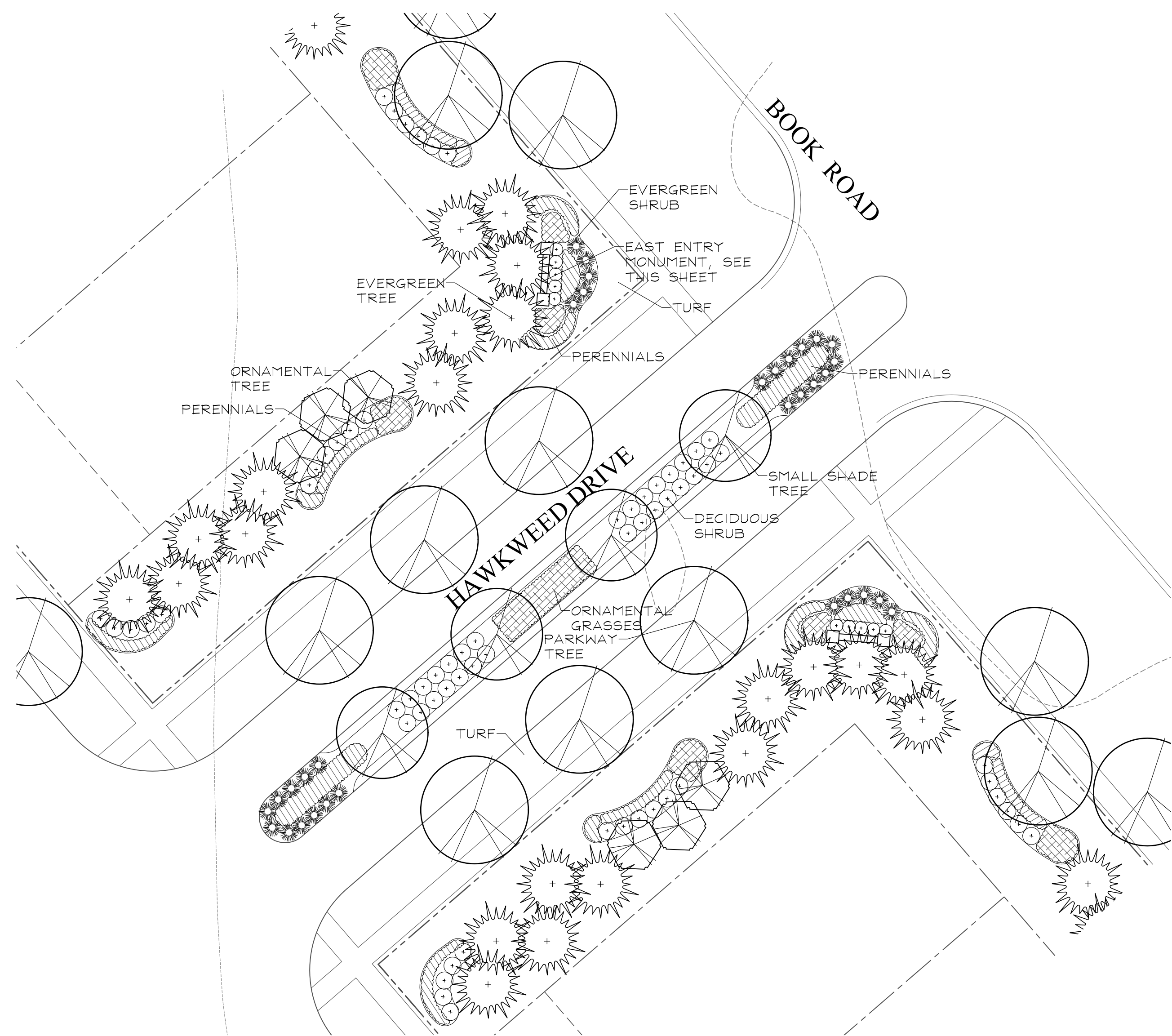
EAST ENTRY MONUMENT ELEVATION
SCALE: 3/8"=1'



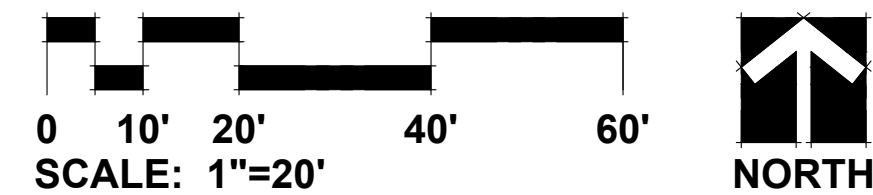
APARTMENT MONUMENT ELEVATION
SCALE: 3/8"=1'



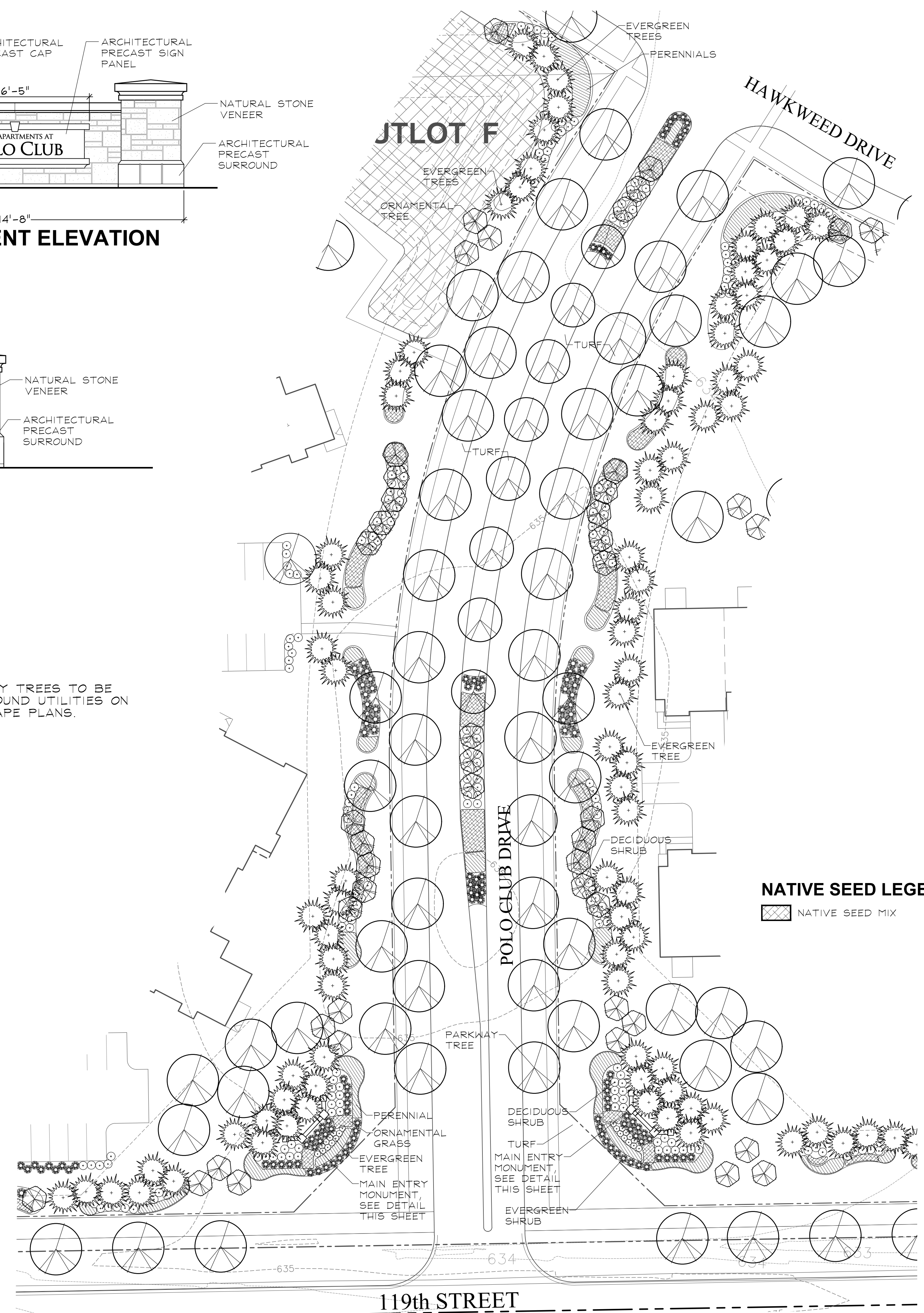
MAIN ENTRY MONUMENT ELEVATION
SCALE: 3/8"=1'



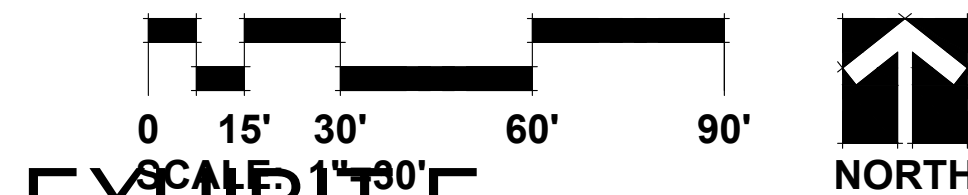
EAST ENTRANCE LANDSCAPE DETAIL



NOTE: PARKWAY TREES TO BE ADJUSTED AROUND UTILITIES ON FINAL LANDSCAPE PLANS.



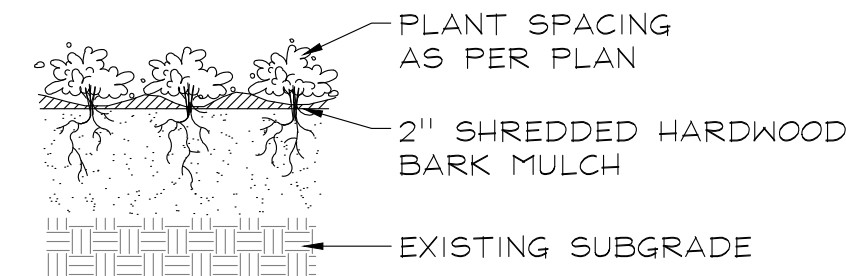
MAIN ENTRANCE LANDSCAPE DETAIL



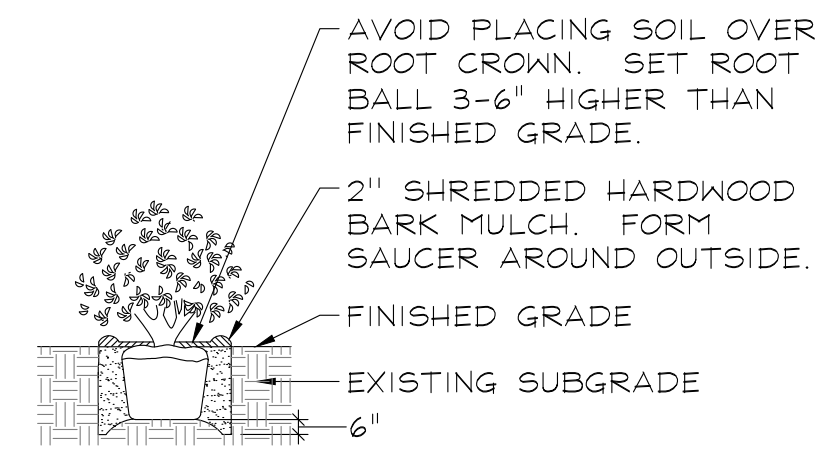
REVISIONS	DATE
7	10.18.18
6	10.02.18
5	9.28.18
4	7.30.18
3	7.06.18
2	6.04.18
1	5.15.18

DATE	3.26.18
PROJECT NO.	DR1705
DRAWN	MGM
CHECKED	JCT
SHEET NO.	

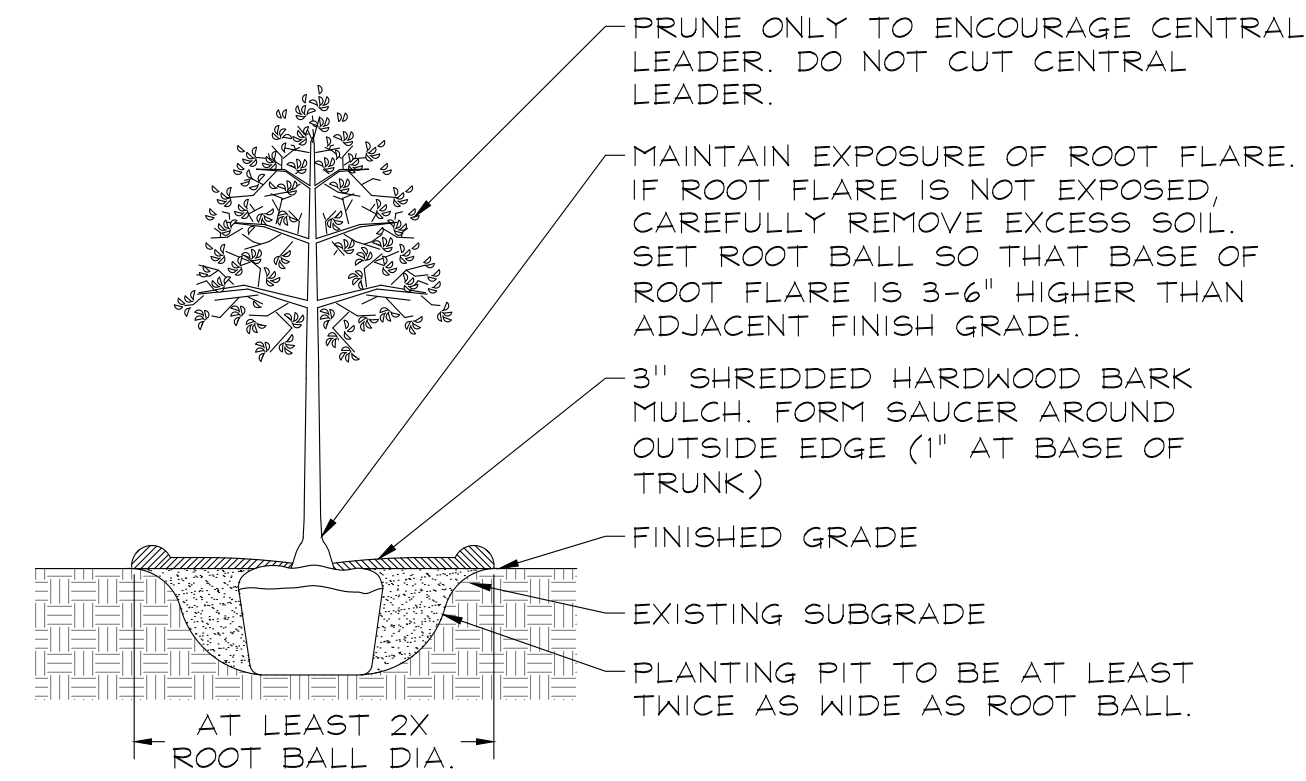
PLANTING DETAILS



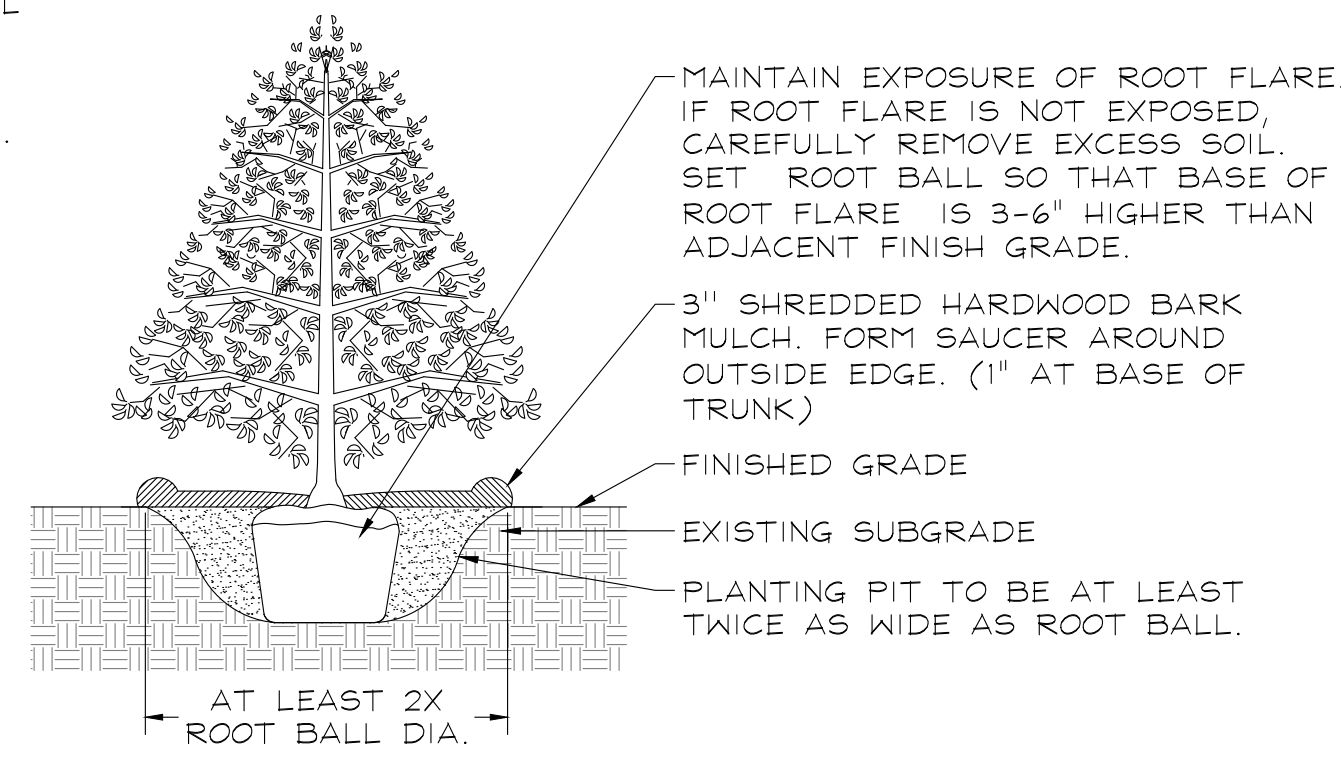
PERENNIALS AND GROUNDCOVERS
NOT TO SCALE



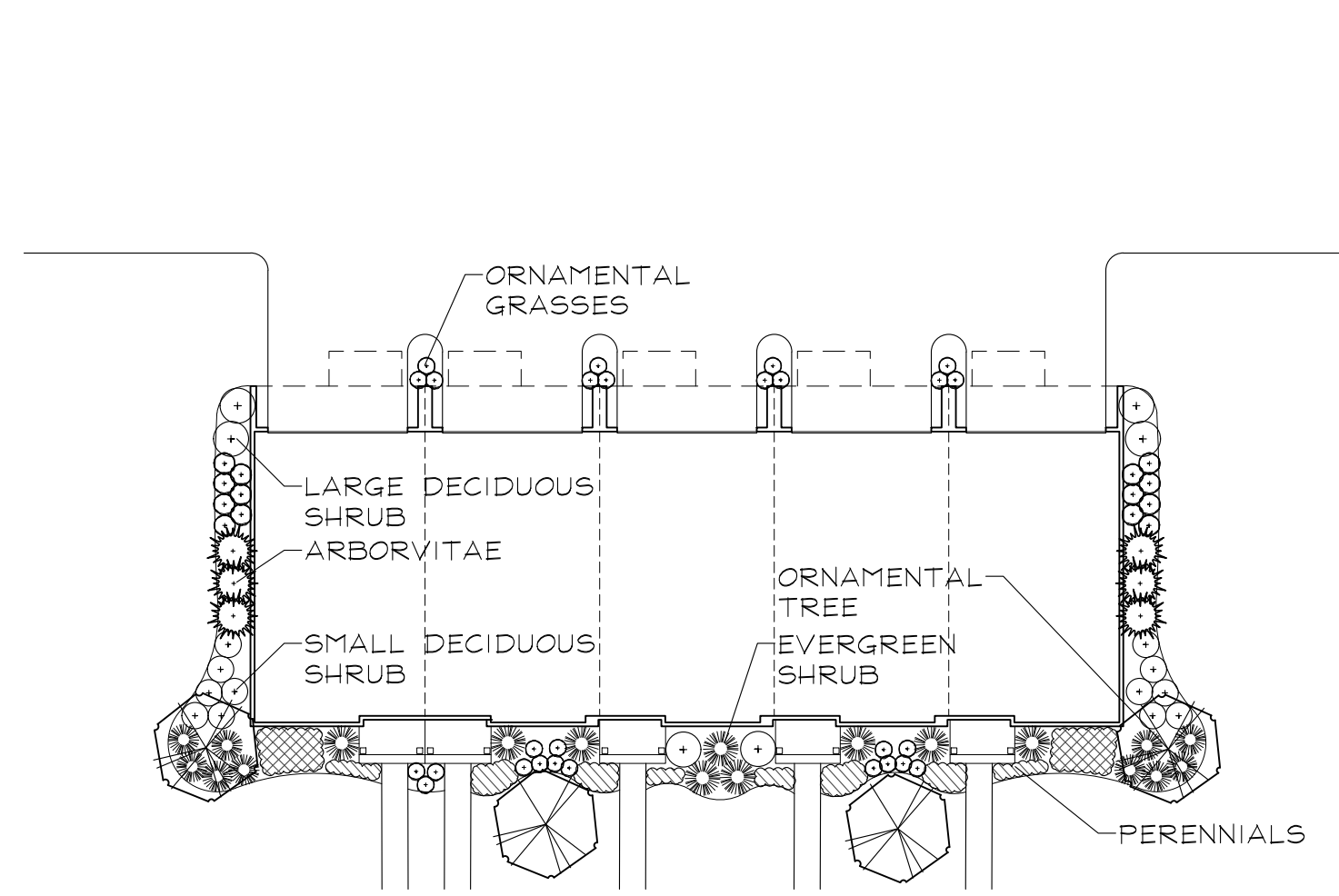
DECIDUOUS AND EVERGREEN SHRUBS
NOT TO SCALE



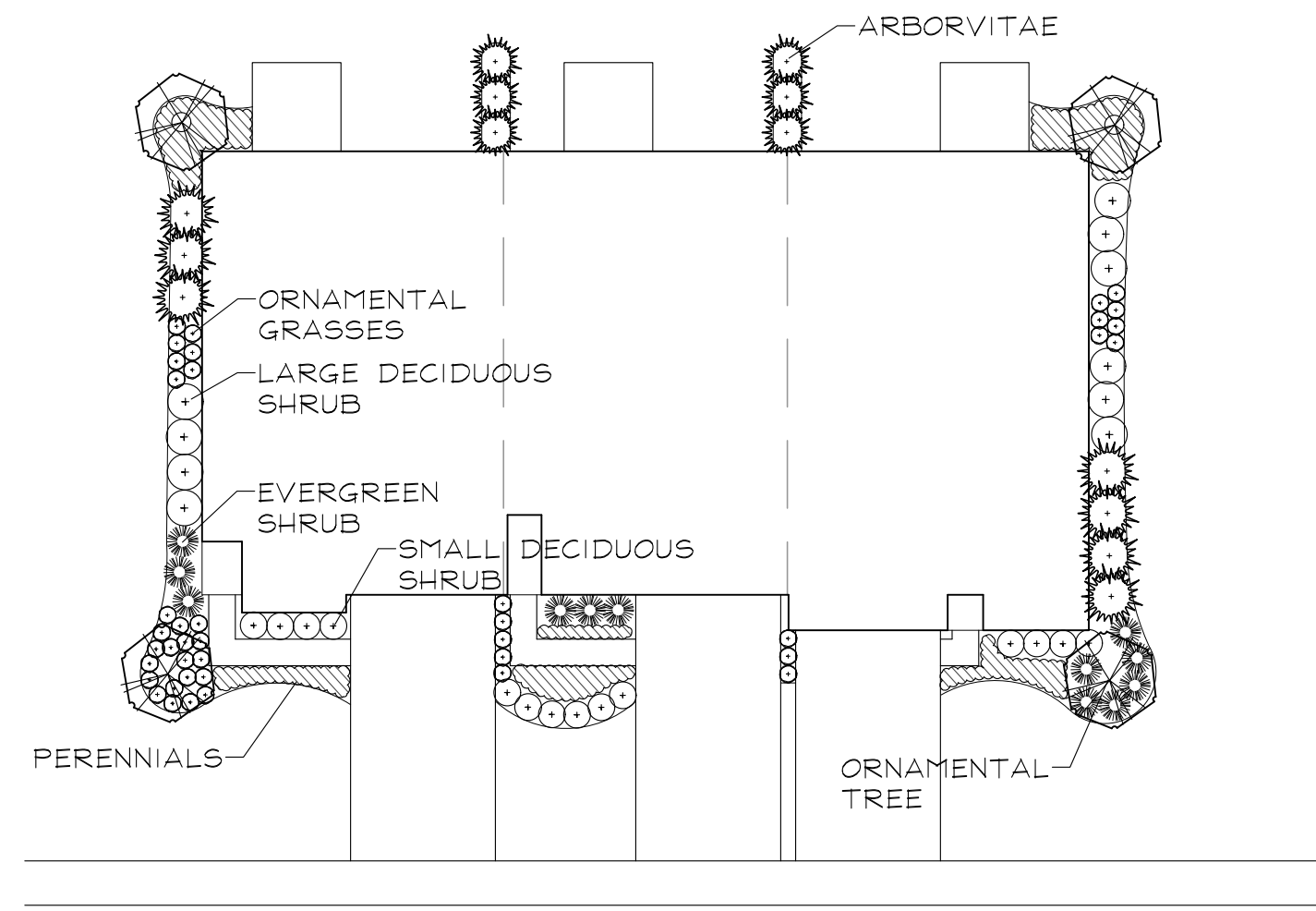
DECIDUOUS TREES
NOT TO SCALE



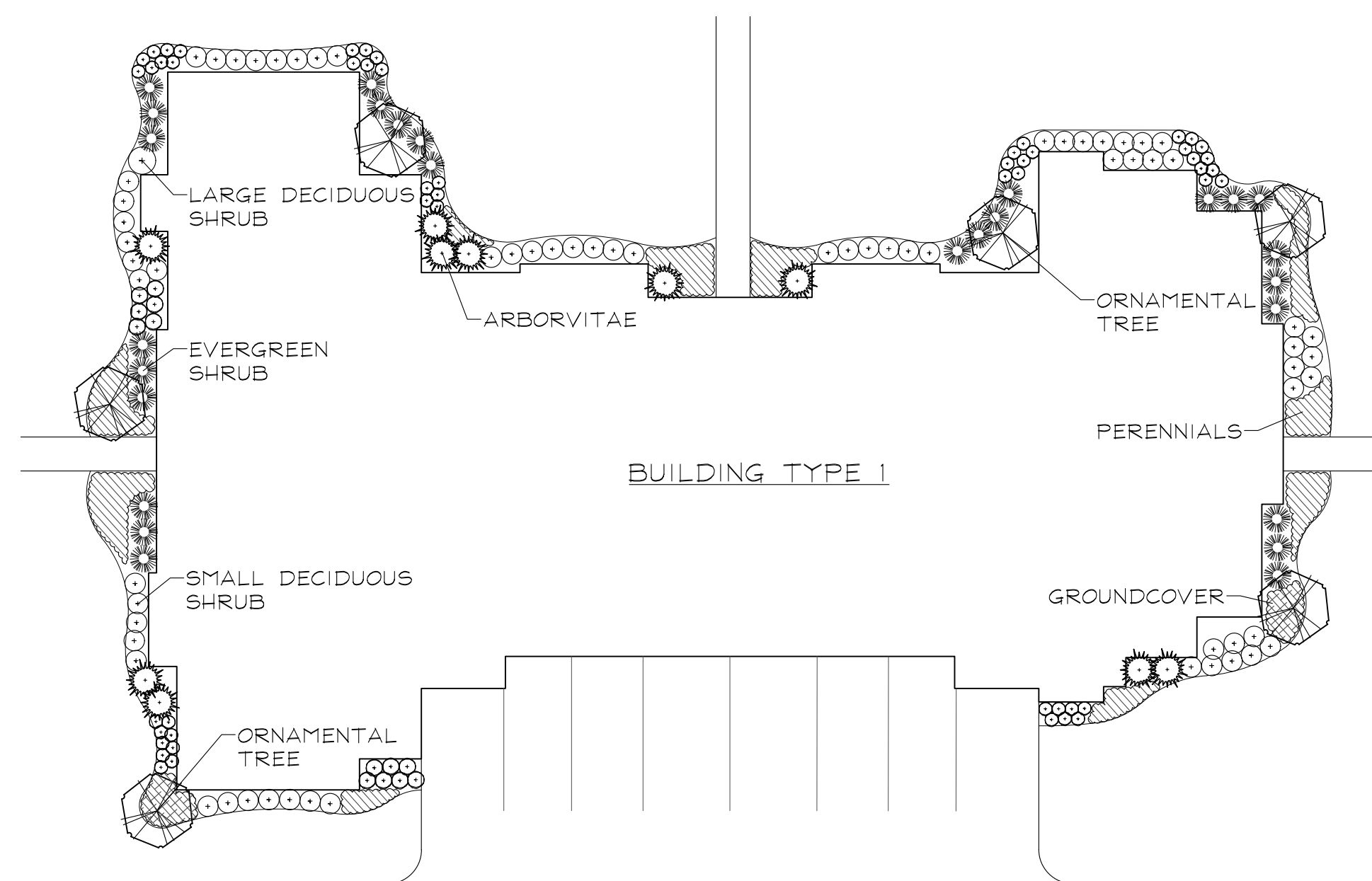
EVERGREEN TREES
NOT TO SCALE



TYPICAL SEABOARD TOWNHOME FOUNDATION LANDSCAPE PLAN
SCALE: 1"=20'



TYPICAL AGE-TARGETED TOWNHOME FOUNDATION LANDSCAPE PLAN
SCALE: 1"=20'



TYPICAL APARTMENT FOUNDATION LANDSCAPE PLAN
SCALE: 1"=20'

FOUNDATION PLAN REPRESENTATIVE PLANT LIST

Key	Botanical/Common Name	Size	Remarks
[Symbol]	ORNAMENTAL TREES		
	Amelanchier grandiflora APPLE SERVICEBERRY	6' Tall	Multi-Stem
	Cornus mas CORNELIANCHERRY DOGWOOD	6' Tall	Multi-Stem
	Magnolia stellata 'Royal Star' ROYAL STAR MAGNOLIA	6' Tall	Multi-Stem
	Syringa pectinifolia 'Morton' CHINA SNOW PEKING LILAC	6' Tall	Multi-Stem
[Symbol]	DECIDUOUS SHRUBS		
	Hydrangea macrophylla 'Bailmer' ENDLESS SUMMER HYDRANGEA	24" Wide	3' O.C.
	Rhus aromatica 'Gro-low' GRO-LOW FRAGRANT SUMAC	24" Wide	3' O.C.
	Spiraea betulifolia 'Tor' BIRCHLEAF SPIREA	24" Tall	3' O.C.
	Spiraea nipponica 'Snowmound' SNOWMOUND SPIREA	30" Wide	4' O.C.
	Syringa patula 'Miss Kim' MISS KIM LILAC	30" Tall	4' O.C.
	Viburnum x juddii JUDD VIBURNUM	36" Tall	4' O.C.
	Viburnum trilobum 'Redwing' Highbush CRANBERRY VIBURNUM	36" Tall	4' O.C.
	Weigela florida 'Verweil-4' SONIC BOOM RED WEIGELA	24" Tall	4' O.C.
	[Symbol]	EVERGREEN SHRUBS	
Juniperus chinensis var. sargentii 'Glaucal' BLUE SARGENT JUNIPER		24" Wide 6" Tall	4' O.C.
Taxus x media 'Densiflora' DENSE YEW		24" Wide	3' O.C.
Thuja occidentalis 'Smaragd' EMERALD GREEN ARBORVITAE		4' Tall	3' O.C.
[Symbol]	ORNAMENTAL GRASSES & PERENNIALS		
	Calamagrostis x acutiflora 'Overdam' WHITE FEATHER REED GRASS	#1	30" O.C.
	Coreopsis 'Jethro Tull' JETHRO TULL COREOPSIS	#1	18" O.C.
	Echinacea purpurea PURPLE CONEFLOWER	#1	18" O.C.
	Hemerocallis 'Pardon Me' PARDON ME DAYLILY	#1	18" O.C.
[Symbol]	GROUNDCOVERS		
	Geranium sanguineum var. striatum STRIATUM BLOODY CRANESBILL	#SP4	12" O.C.
	Vinca minor 'Dart's Blue' DART'S BLUE PERIWINKLE	#SP4	12" O.C.

GRWA
GARY R. WEBER
ASSOCIATES, INC.
LAND PLANNING
ECOLOGICAL CONSULTING
LANDSCAPE ARCHITECTURE
402 WEST LIBERTY DRIVE
WHEATON, ILLINOIS 60187
PHONE: 630-668-7197

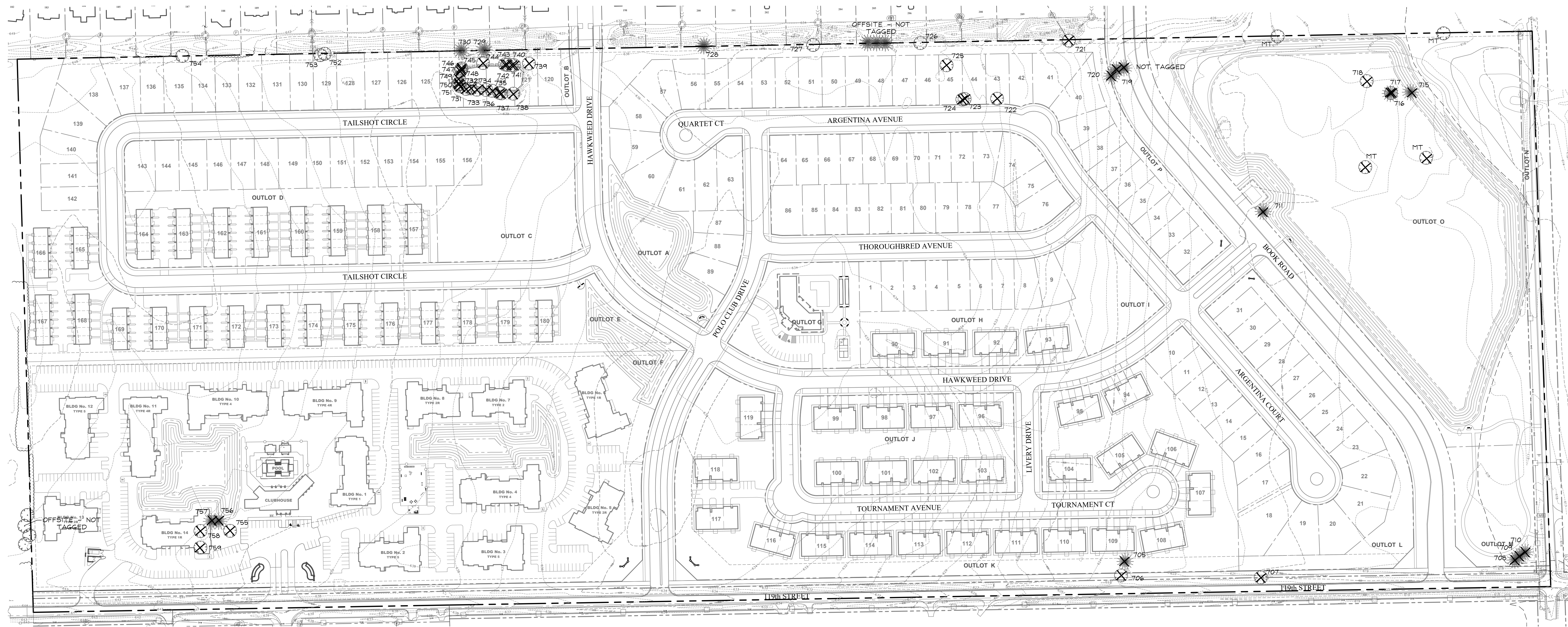
CLIENTS
D.R. HORTON
America's Builder
750 E. BUNKER COURT, SUITE 500
VERNON HILLS, IL 60061
OCULUS DEVELOPMENT
1202 W. MONROE STREET
CHICAGO, IL 60607
ENGINEER
CEMCON, LTD.
2280 WHITE OAK CIR, SUITE 100
AURORA, ILLINOIS 60502

POLO CLUB
NAPERVILLE, ILLINOIS
TYPICAL FOUNDATION LANDSCAPE PLANS

REVISIONS

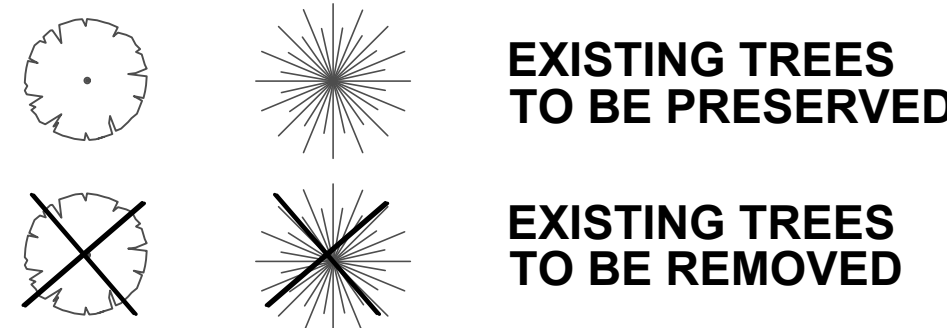
7	10.18.18
6	10.02.18
5	9.28.18
4	7.30.18
3	7.06.18
2	6.04.18
1	5.15.18

DATE	3.26.18
PROJECT NO.	DR1705
DRAWN	MGM
CHECKED	JCT
SHEET NO.	



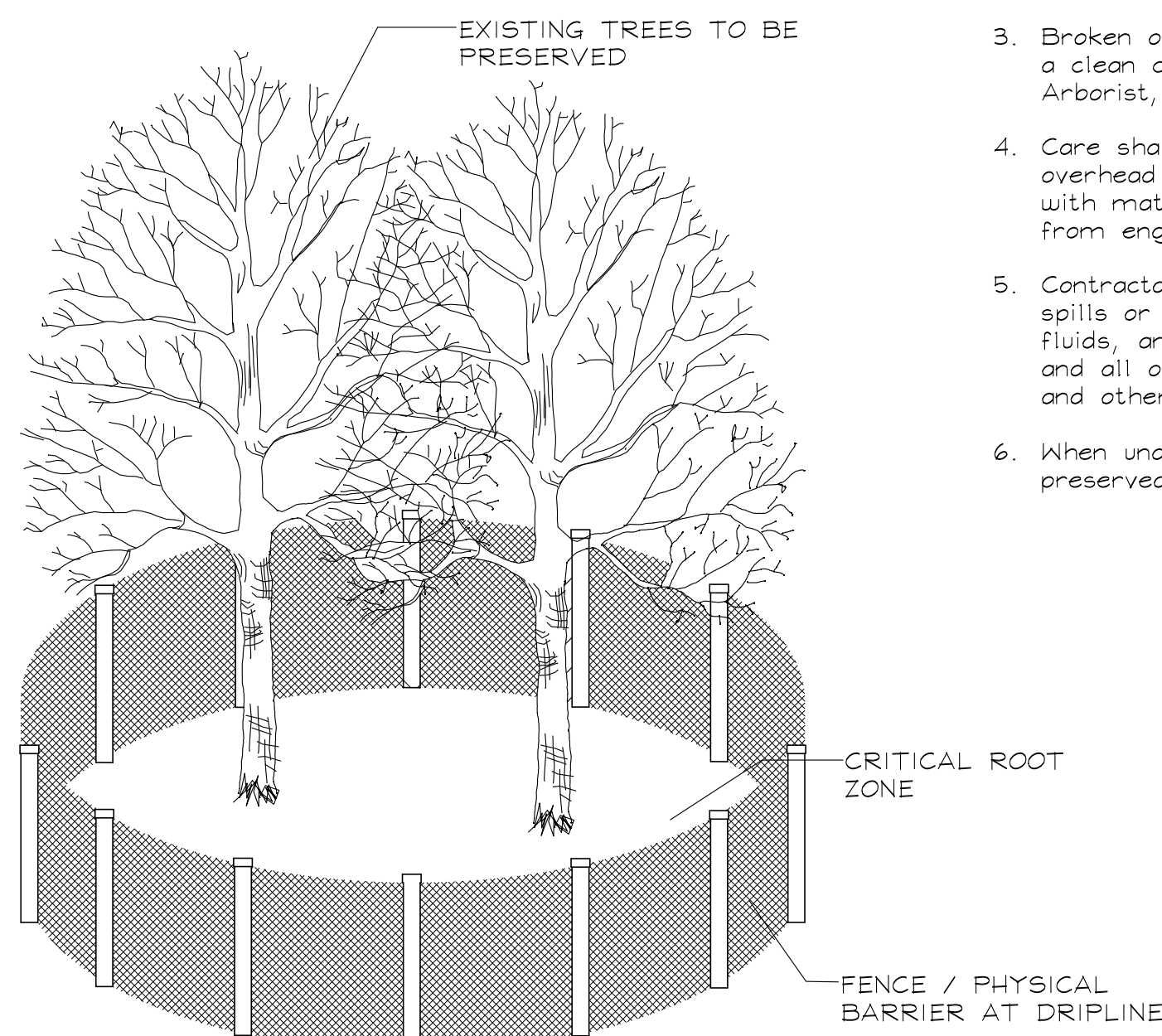
LEGEND

DECIDUOUS EVERGREEN



TREE PRESERVATION NOTES

- 48" high snow fence or wood barriers shall extend to the dripline of the tree or tree mass whenever possible, shall be installed before construction begins, and should not be removed until the completion of construction.
- All accidental damage to existing trees that are to be preserved shall be promptly treated as required in accordance with recognized horticultural practices and the instructions of the professional Arborist, Landscape Architect or Horticulturist.
- Broken or badly bruised branches shall be removed with a clean cut, if recommended by the professional Arborist, Landscape Architect or Horticulturist.
- Care shall be exercised by the contractors to protect all overhead limbs and branches from damage by contact with material, machinery or equipment and by damage from engine exhaust.
- Contractors shall protect trees and vegetation against spills or discharge of fuels, lubricating oils, hydraulic fluids, anti-freeze and coolants, calcium chloride, lime and all other similar hydrocarbons, organic chemicals, and other materials which can be harmful.
- When underground utilities are proposed within 5' of a preserved tree trunk, they must be augered if possible.

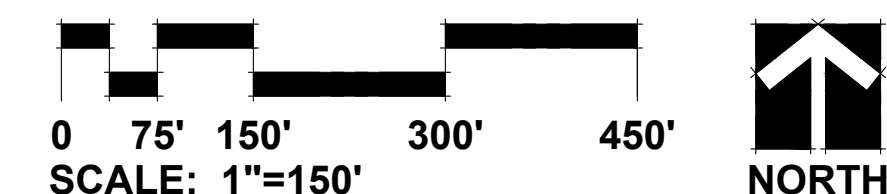


TREE PRESERVATION DETAIL

TREE INVENTORY

TAG NO.	BOTANICAL NAME	COMMON NAME	SIZE	HEALTH/STRUCTURE	PROPOSED ACTION
705	<i>Picea abies</i>	Norway Spruce	8"	Good	Remove
706	<i>Acer rubra</i>	Red Maple	10"	Good	Remove
707	<i>Morus rubra</i>	Mulberry	14"	Poor; Missing/Dead Limbs	Remove
708	<i>Picea abies</i>	Norway Spruce	10"	Fair; Crowded	Remove
709	<i>Picea abies</i>	Norway Spruce	7"	Fair; Crowded	Remove
710	<i>Picea abies</i>	Norway Spruce	14"	Fair; Crowded	Remove
711	<i>Pinus nigra</i>	Austrian Pine	10"	Poor; Leaning	Remove
712	<i>Malus</i>	Apple/Crab	12"	Poor; Missing/Dead Limbs	Remove
713	<i>Pinus nigra</i>	Austrian Pine	6"	Poor; Crowded	Remove
714	<i>Salix nigra</i>	Black Willow	14", 10", 12"	Poor; Missing/Dead Limbs	Remove
715	<i>Pinus nigra</i>	Austrian Pine	10"	Poor; Missing/Dead Limbs	Remove
716	<i>Morus rubra</i>	Mulberry	14"	Poor; Missing/Dead Limbs	Remove
717	<i>Pinus nigra</i>	Austrian Pine	10"	Poor; Missing/Dead Limbs	Remove
718	<i>Salix nigra</i>	Black Willow	20"	Poor; Missing/Dead Limbs	Remove
719	<i>Picea abies</i>	Norway Spruce	10"	Fair	Remove
720	<i>Picea abies</i>	Norway Spruce	14"	Fair	Remove
721	<i>Malus</i>	Apple/Crab	14"	Poor; Missing/Dead Limbs	Remove
722	<i>Morus rubra</i>	Mulberry	10"	Poor; Missing/Dead Limbs	Remove
723	<i>Salix nigra</i>	Black Willow	10", 6"	Poor; Leaning	Remove
724	<i>Salix nigra</i>	Black Willow	10"	Poor; Crowded	Remove
725	<i>Acer rubra</i>	Red Maple	10", 14"	Poor; Split Risk	Remove
726	<i>Acer rubra</i>	Red Maple	50", 34"	Fair; Split Risk	Preserve
727	<i>Acer rubra</i>	Red Maple	24", 20", 27"	Good	Preserve
728	<i>Pinus nigra</i>	Austrian Pine	9"	Fair; Missing/Dead Limbs	Off Site
729	<i>Pinus strobus</i>	White Pine	7"	Good	Off Site
730	<i>Pinus strobus</i>	White Pine	9"	Good	Off Site
731	<i>Populus deltoides</i>	Eastern Cottonwood	16"	Poor; Leaning	Remove
732	<i>Populus deltoides</i>	Eastern Cottonwood	16"	Poor; Leaning	Remove
733	<i>Populus deltoides</i>	Eastern Cottonwood	14", 10"	Poor; Split Risk	Remove
734	<i>Populus deltoides</i>	Eastern Cottonwood	10", 12", 6"	Poor; Split Risk	Remove
735	<i>Populus deltoides</i>	Eastern Cottonwood	12"	Poor; Leaning	Remove
736	<i>Populus deltoides</i>	Eastern Cottonwood	16"	Fair	Remove
737	<i>Populus deltoides</i>	Eastern Cottonwood	18"	Poor; Leaning	Remove
738	<i>Salix nigra</i>	Black Willow	6", 8", 12"	Poor; Split Risk	Remove

TAG NO.	BOTANICAL NAME	COMMON NAME	SIZE	HEALTH/STRUCTURE	PROPOSED ACTION
739	<i>Populus deltoides</i>	Eastern Cottonwood	6", 8"	Poor; Split Risk	Remove
740	<i>Populus deltoides</i>	Eastern Cottonwood	6", 12", 10"	Poor; Split Risk	Remove
741	<i>Populus deltoides</i>	Eastern Cottonwood	32"	Poor; Leaning	Remove
742	<i>Populus deltoides</i>	Eastern Cottonwood	12", 12"	Poor; Split Risk	Remove
743	<i>Morus rubra</i>	Mulberry	4", 4", 4"	Poor; Missing/Dead Limbs	Remove
744	<i>Malus</i>	Apple/Crab	5"	Good	Remove
745	<i>Populus deltoides</i>	Eastern Cottonwood	16"	Poor; Leaning	Remove
746	<i>Populus deltoides</i>	Eastern Cottonwood	18"	Poor; Leaning	Remove
747	<i>Populus deltoides</i>	Eastern Cottonwood	6"	Poor; Leaning	Remove
748	<i>Populus deltoides</i>	Eastern Cottonwood	14"	Poor; Leaning	Remove
749	<i>Populus deltoides</i>	Eastern Cottonwood	12"	Poor; Leaning	Remove
750	<i>Populus deltoides</i>	Eastern Cottonwood	16"	Poor; Leaning	Remove
751	<i>Populus deltoides</i>	Eastern Cottonwood	30"	Poor; Leaning	Remove
752	<i>Acer negundo</i>	Box Elder	6", 7", 6"	Poor; Crowded	Preserve
753	<i>Acer negundo</i>	Box Elder	9", 4", 6"	Poor; Crowded	Preserve
754	<i>Celtis occidentalis</i>	Common Hackberry	16", 14", 12"	Good	Preserve
755	<i>Gleditsia triacanthos</i>	Honey Locust	32"	Fair; Missing/Dead Limbs	Remove
756	<i>Pinus nigra</i>	Austrian Pine	26"	Poor; Missing/Dead Limbs	Remove
757	<i>Pinus nigra</i>	Austrian Pine	24"	Poor; Leaning	Remove
758	<i>Gleditsia triacanthos</i>	Honey Locust	28"	Fair; Missing/Dead Limbs	Remove
759	<i>Gleditsia triacanthos</i>	Honey Locust	44"	Fair; Missing/Dead Limbs	Remove



GRWA
GARY R. WEBER ASSOCIATES, INC.
 LAND PLANNING
 ECOLOGICAL CONSULTING
 LANDSCAPE ARCHITECTURE
 402 WEST LIBERTY DRIVE
 WHEATON, ILLINOIS 60187
 PHONE: 630-668-7197

CLIENTS
D-R-HORTON
America's Builder
 750 E. BUNKER COURT, SUITE 500
 VERNON HILLS, IL 60061
OCULUS DEVELOPMENT
 1202 W. MONROE STREET
 CHICAGO, IL 60607
 ENGINEER:
CEMCON, LTD.
 2200 WHITE OAK CIR, SUITE 100
 AURORA, ILLINOIS 60502

POLO CLUB
 NAPERVILLE, ILLINOIS
TREE PRESERVATION PLAN

REVISIONS	DATE	DESCRIPTION
7	10.18.18	
6	10.02.18	
5	9.28.18	
4	7.30.18	
3	7.06.18	
2	6.04.18	
1	5.15.18	

DATE 3.26.18
 PROJECT NO. DR1705
 DRAWN MGM
 CHECKED JCT
 SHEET NO.

