

**Preliminary  
Landscape Development Plans**



- △ 10.16.2020 - Per City Review #1
- △ 11.18.2020 - Per City Review #2
- △ 1.20.2021 - Per Revised Site Plan & Enhanced Buffers
- △ 2.24.2021 - Per City Review / New Site Plan dated 1.29.2021
- △ 3.15.2021 - Per City Review dated 3.11.2021 & Naperville PC & FPD Comments

# NAPER COMMONS

NAPERVILLE, ILLINOIS



DEVELOPER :

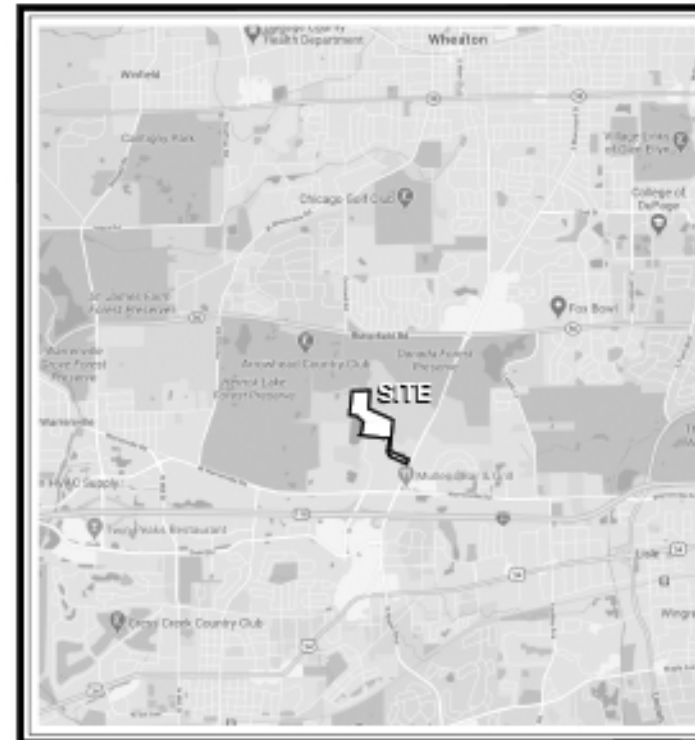
1900 E. Golf Road - Suite 300  
Schaumburg, Illinois 60173  
Project Manager : Rob Getz, P.E.

ENGINEER :

**CEMCON, Ltd.**  
2280 White Oak Circle  
Aurora, IL 60502  
(630) 862.2100 voice  
Project Manager : Chris Morgart, P.E.

LANDSCAPE ARCHITECT :

**Signature Design Group, Inc.**  
132 N. Washington Street  
Naperville, Illinois 60540  
(630) 305.3980 voice  
Project Manager: Greg G. Sagen, RLA



LOCATION MAP

INDEX OF DRAWINGS :

- L.100 Overall Landscape Plan
- L.101 Landscape Plan - Southeast
- L.102 Landscape Plan - East
- L.103 Landscape Plan - Central
- L.104 Landscape Plan - Northeast
- L.105 Landscape Plan - Northwest
- L.106 Parkway Tree Exhibit
- L.107 Plant Material Legend, Notes & Planting Details
- L.108 Turf Establishment & SWM Basins
- L.109 Spare
- L.110 Spare
- L.111 Prototypical House Landscape Plans
- L.112 Prototypical Townhome Plans
- L.113 Sign Details

△ City of Naperville Project No. 20 - 0000086

project:

# Naper Commons

Naperville, Illinois

sheet description:

## Overall Landscape Plan Preliminary

owner:



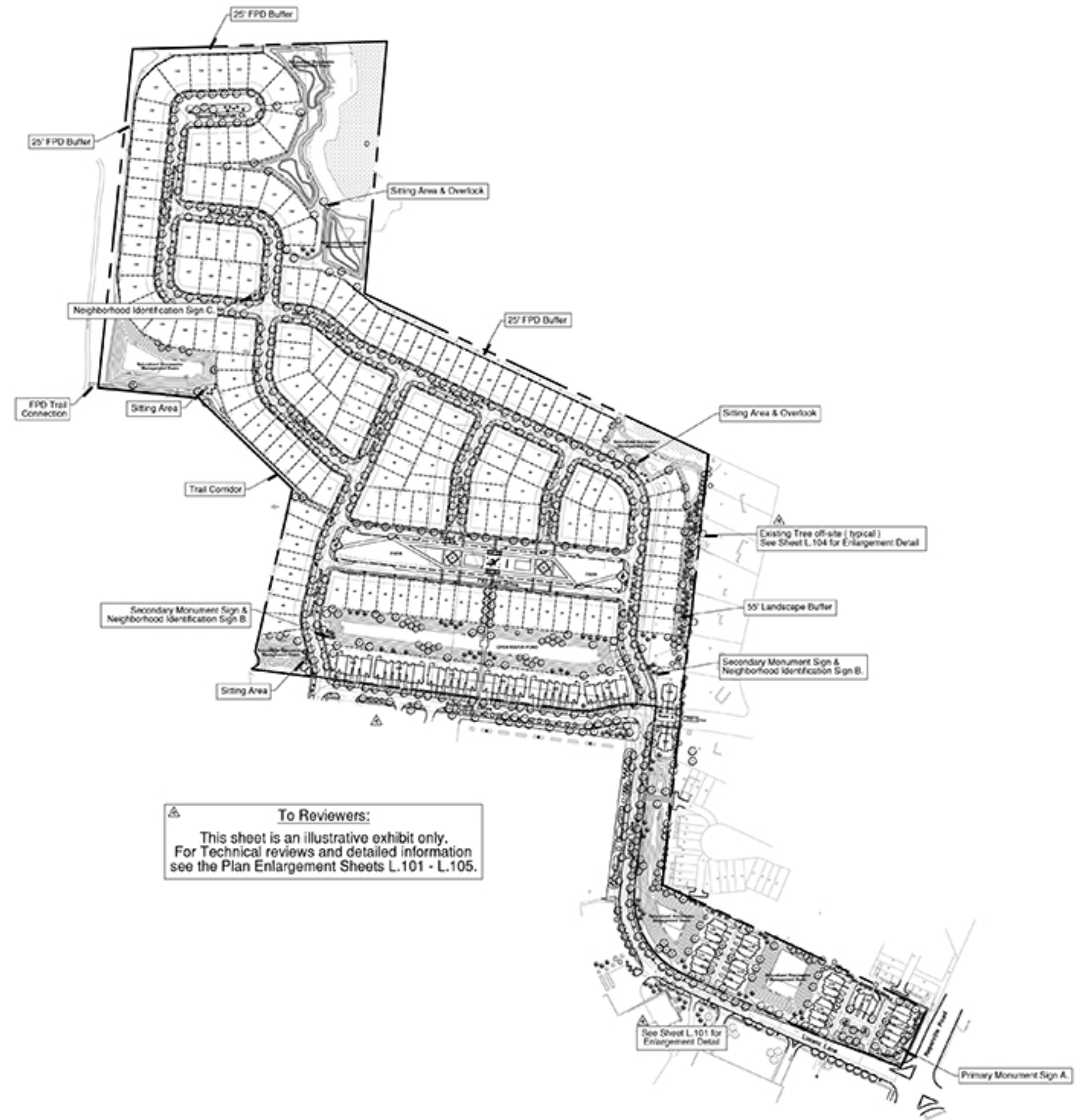
north: scale: 1" = 175'0"



3/15/2021	For City Review (2021) L.101, L.102 & L.103
2/24/2021	For City Review - New Site Plan (2021)
1/28/2021	For Revised Site Plan & Enhanced Notes
11/12/2020	For City Review #2
10/14/2020	For City Review #1

original issue date: **14 September 2020**

drawn by:  
checked by:  
project no.: 20219  
sheet no.:

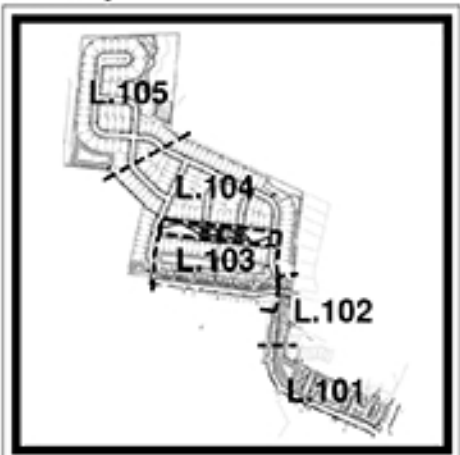


**To Reviewers:**  
This sheet is an illustrative exhibit only.  
For Technical reviews and detailed information  
see the Plan Enlargement Sheets L.101 - L.105.

**NOTES :**

- See Sheet L.106 for Parkway Trees & Fencing
- See Sheet L.107 for Plant Material Legend
- See Sheet L.108 for Turf Establishment Plan
- See Sheet L.111 for Typ. House Landscape Plan
- See Sheet L.112 for Typ. Townhome Landscape Plan

**Sheet Key:**



project:  
**Naper Commons**

Naperville, Illinois

sheet description:  
**Preliminary Landscape Plan  
SOUTHEAST**



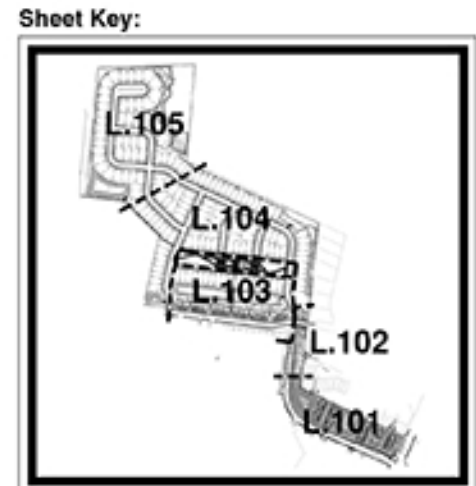
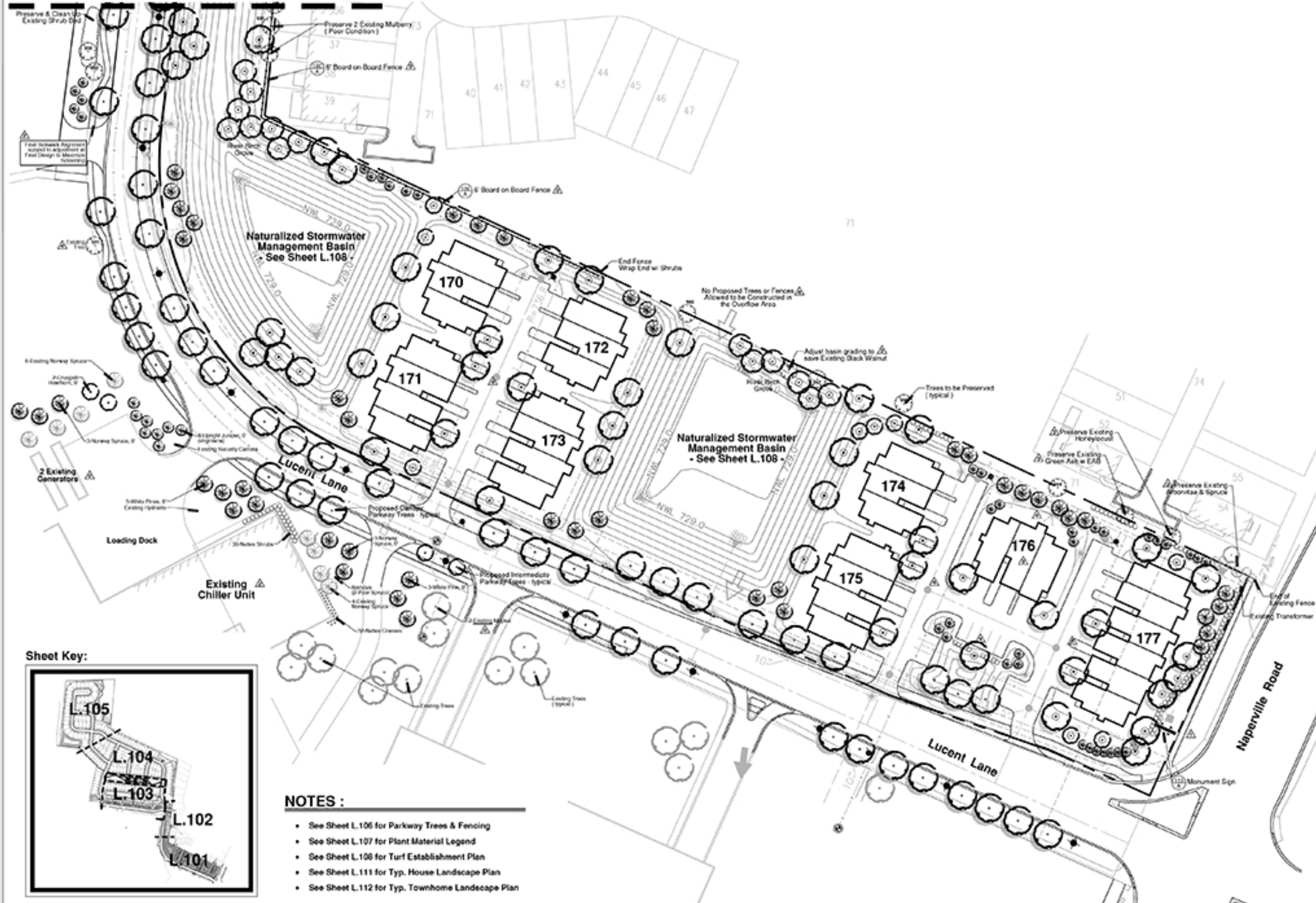
scale: 1" = 40'0"

revisions:

3.15.2021	For City Review 2021 011, 021 & 031 (Per City Review - New Site Plan dated 7/20/21)
4.28.2021	For Revised Site Plan & Enhanced Station
11.12.2020	For City Review #2
10.10.2020	For City Review #1

original issue date: **14 September 2020**

MATCHLINE - See Sheet L.102 -



- NOTES :**
- See Sheet L.106 for Parkway Trees & Fencing
  - See Sheet L.107 for Plant Material Legend
  - See Sheet L.108 for Turf Establishment Plan
  - See Sheet L.111 for Typ. House Landscape Plan
  - See Sheet L.112 for Typ. Townhome Landscape Plan

project:

# Naper Commons

Naperville, Illinois

sheet description:

## Preliminary Landscape Plan EAST

owner:



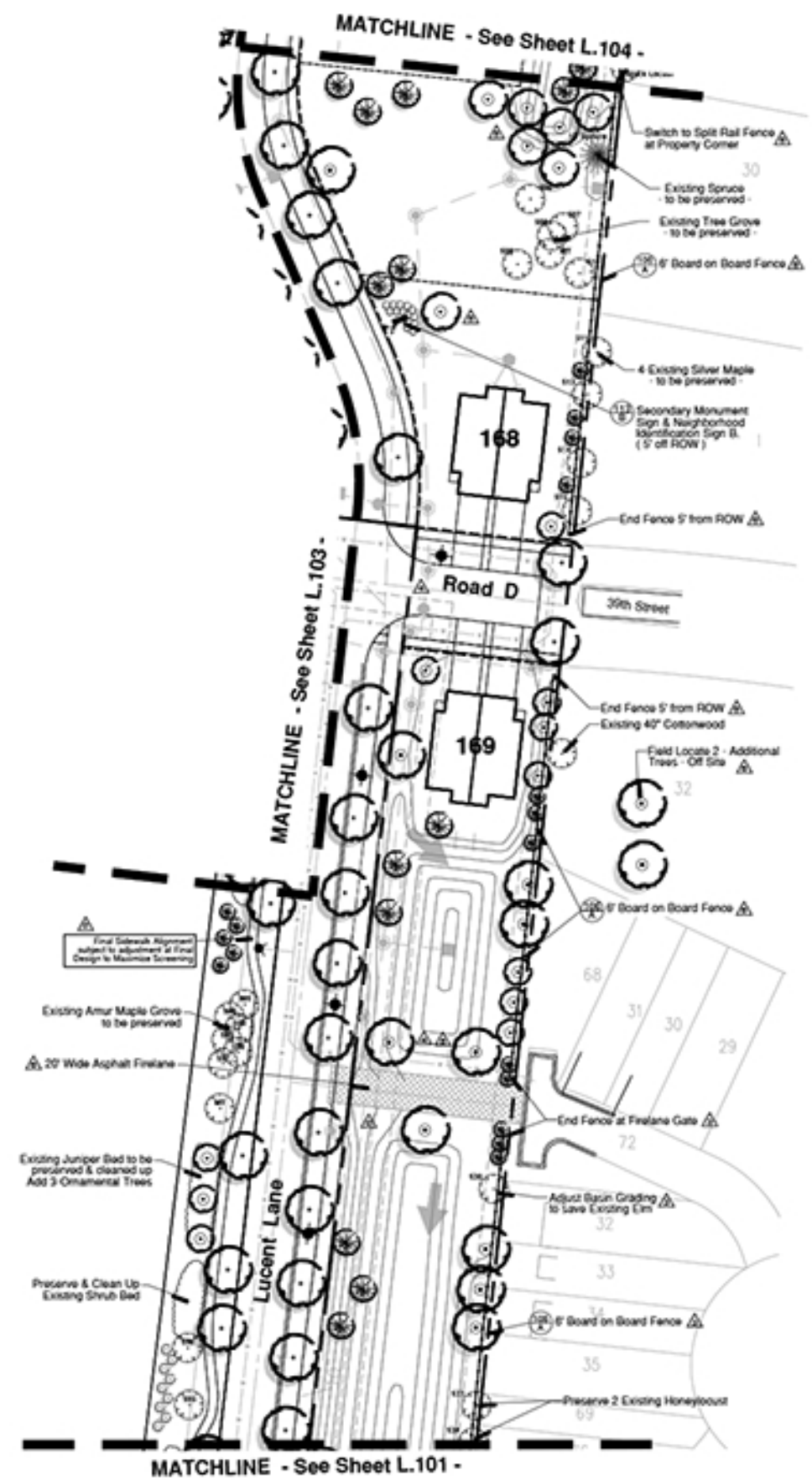
north: scale: 1" = 40'

	3.18.2021	Per City Review dated 3/11/2021 & Naperville, IL & IAD Comments
	2.24.2021	Per City Review - New Site Plan dated 2/24/2021
	1.28.2021	Per Revised Site Plan & Cultural Buffers
	11.18.2020	Per City Review #2
	10.16.2020	Per City Review #1

original issue date: **14 September 2020**

drawn by:  
checked by:  
project no.: **20219**  
sheet no.:

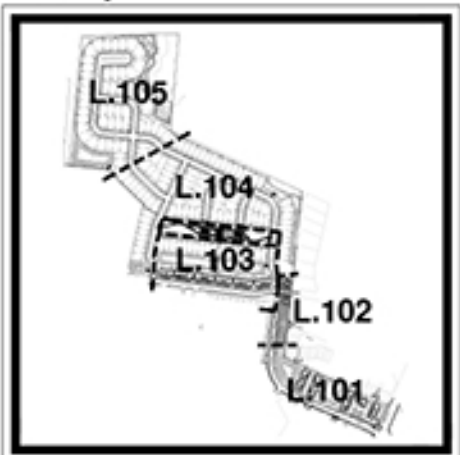
**L.102**



**NOTES :**

- See Sheet L.106 for Parkway Trees & Fencing
- See Sheet L.107 for Plant Material Legend
- See Sheet L.108 for Turf Establishment Plan
- See Sheet L.111 for Typ. House Landscape Plan
- See Sheet L.112 for Typ. Townhome Landscape Plan

**Sheet Key:**



project:  
**Naper Commons**

Naperville, Illinois

sheet description:  
**Preliminary Landscape Plan**  
**CENTRAL**



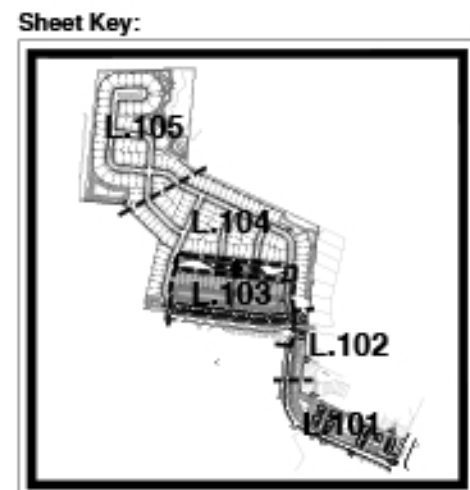
scale: 1" = 40'0"



0.10.2021	Per City Review #1
0.24.2021	Per City Review #2
1.20.2021	Per City Review #3
11.18.2020	Per City Review #4
10.18.2020	Per City Review #5

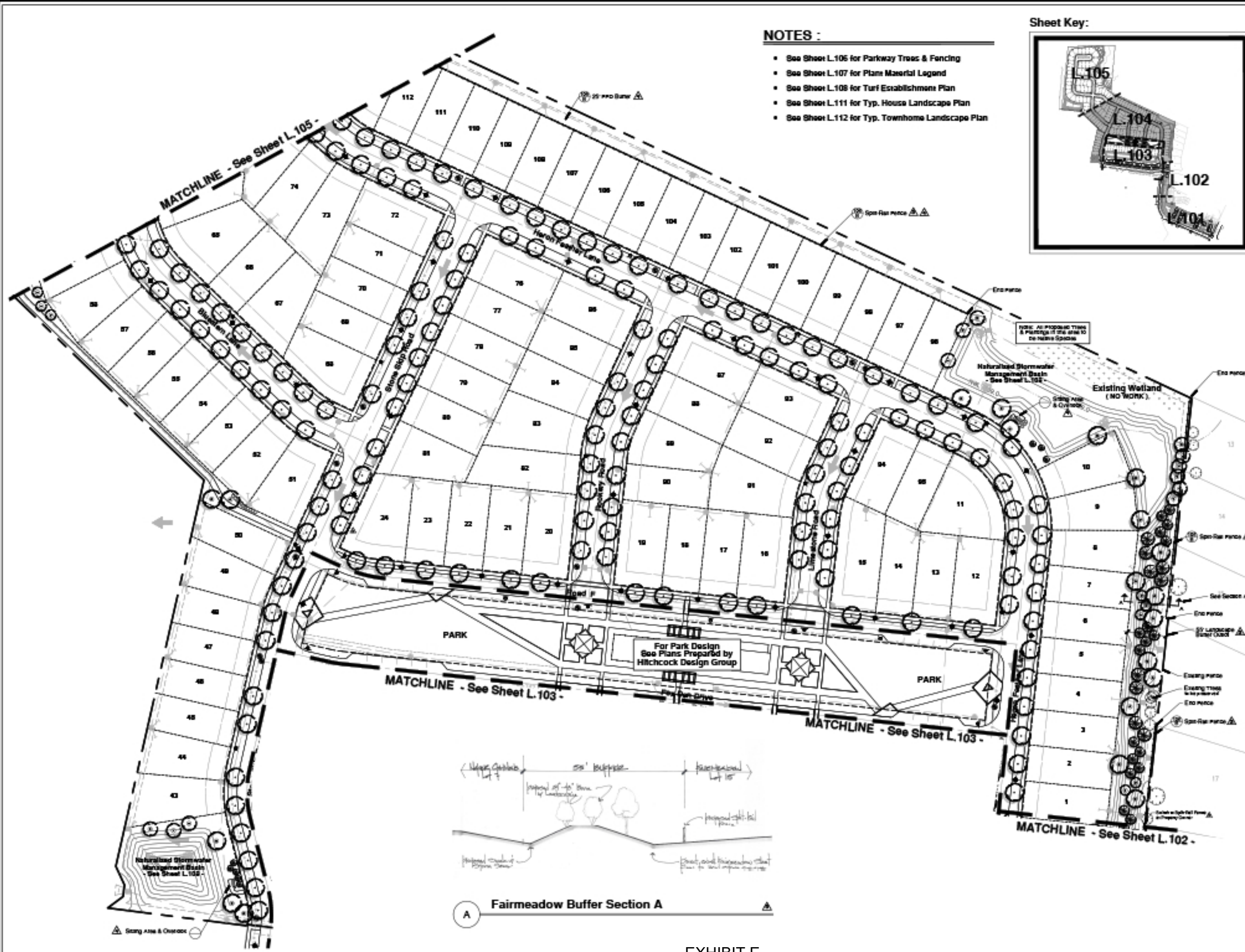
original issue date: 14 September 2020

design by:  
checked by:  
project no.: 20219  
sheet no.:

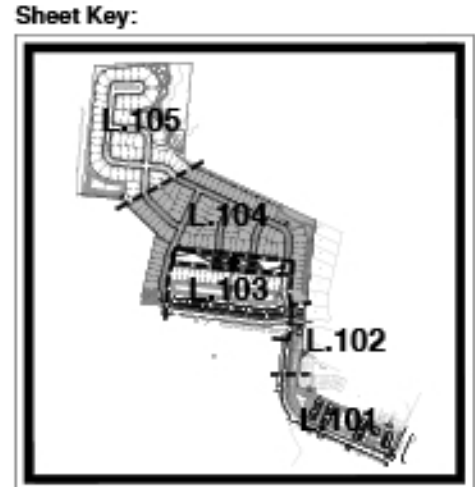


**NOTES :**

- See Sheet L.106 for Parkway Trees & Fencing
- See Sheet L.107 for Plant Material Legend
- See Sheet L.108 for Turf Establishment Plan
- See Sheet L.111 for Typ. House Landscape Plan
- See Sheet L.112 for Typ. Townhome Landscape Plan



- NOTES :**
- See Sheet L.105 for Parkway Trees & Fencing
  - See Sheet L.107 for Plant Material Legend
  - See Sheet L.108 for Turf Establishment Plan
  - See Sheet L.111 for Typ. House Landscape Plan
  - See Sheet L.112 for Typ. Townhome Landscape Plan



Land Planning  
Landscape Architecture  
Environmental Site Design

**Naper Commons**

Naperville, Illinois

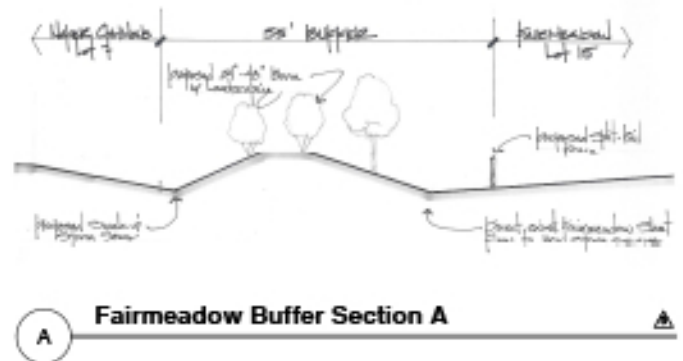
**Preliminary Landscape Plan  
NORTHEAST**



scale: 1" = 60'0"

8.10.2021	Per City Review #1
8.24.2021	Per City Review #2
1.20.2021	Per City Review #3
11.18.2020	Per City Review #4
10.18.2020	Per City Review #5

original issue date: 14 September 2020



project:

# Naper Commons

Naperville, Illinois

sheet description:

## Preliminary Landscape Plan NORTHWEST

date:



North ↑ scale: 1" = 60'0"

08/10/2021	Per City Review / New Site Plan
09/02/2021	Per City Review / New Site Plan
10/02/2021	Per City Review / New Site Plan
11/18/2020	Per City Review #2
10/18/2020	Per City Review #1

original issue date: 14 September 2020

design by:  
checked by:  
project no.: 20219  
sheet no.:

L.105

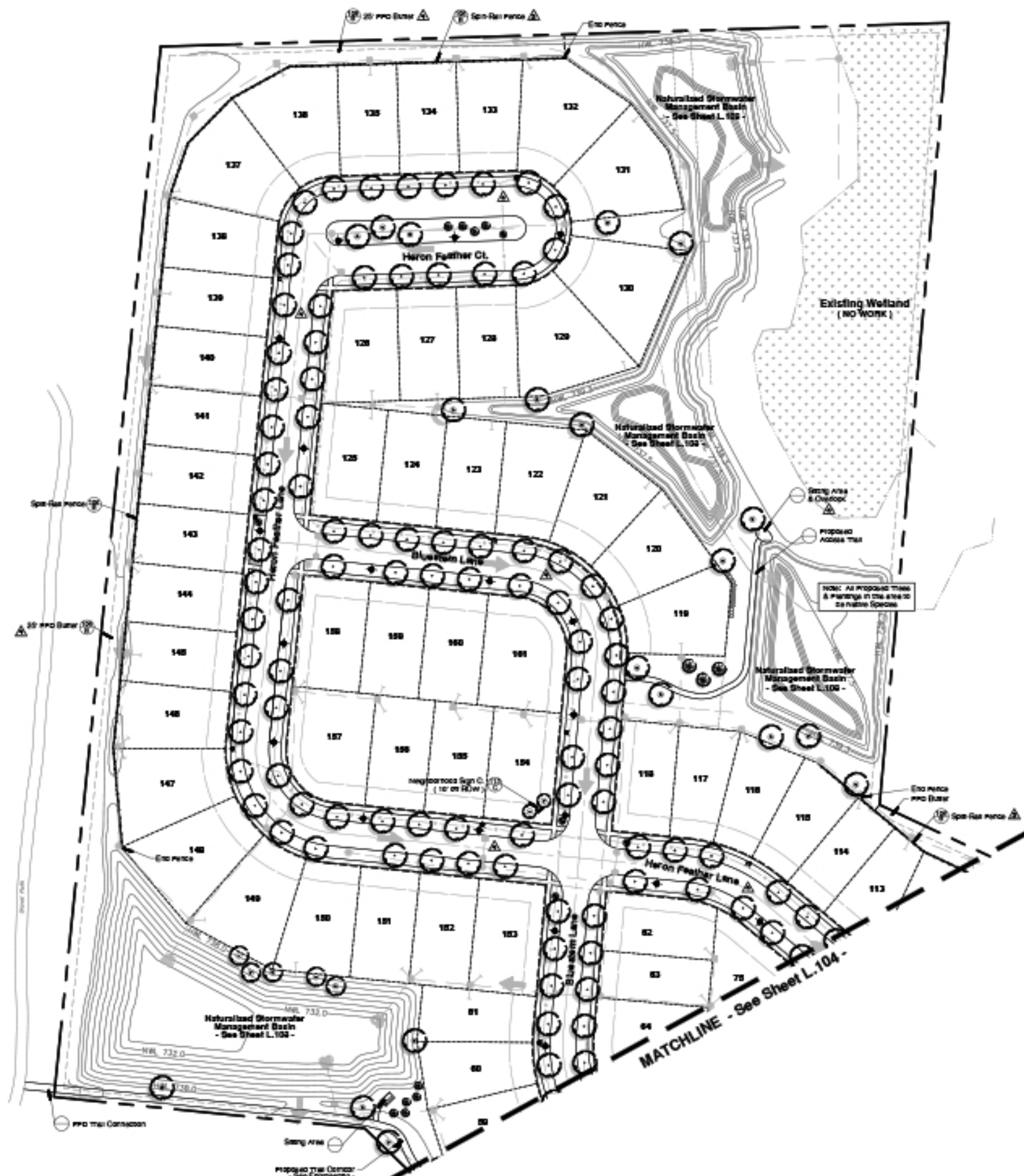
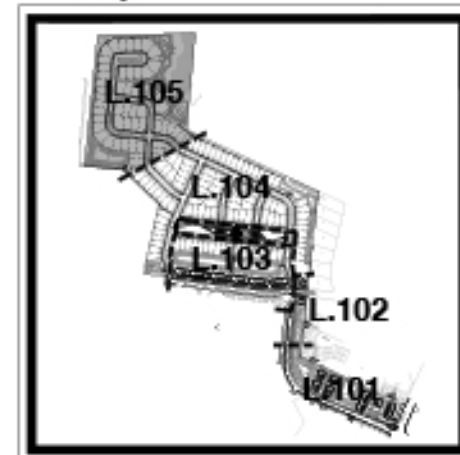


EXHIBIT E

**NOTES :**

- See Sheet L.106 for Parkway Trees & Fencing
- See Sheet L.107 for Plant Material Legend
- See Sheet L.108 for Turf Establishment Plan
- See Sheet L.111 for Typ. House Landscape Plan
- See Sheet L.112 for Typ. Townhome Landscape Plan

**Sheet Key:**



**PARKWAY TREE LEGEND :** (Sheet L.106 Only)

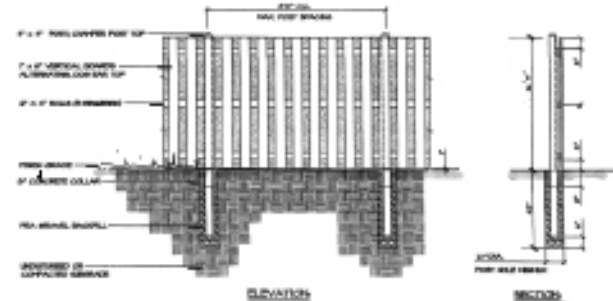
- Proposed Common Area Parkway Trees, 2.5" Caliper  
Planted at approx. 40' o.c. during Site Development
- Proposed Individual Lot Parkway Trees, 2.5" Caliper at approx. 40' o.c.  
To be Planted by Pulte at the time of individual house construction  
Species :
  - American Linden ( A )
  - Bald Cypress ( A )
  - Bur Oak ( A )
  - Chinkapin Oak ( A )
  - Hackberry ( A )
  - Kentucky Coffeetree ( A )
  - Red Oak ( A )
  - Swamp White Oak ( A )
  - Tulip Tree ( A )
  - Autumn Blaze Maple ( B )
  - Exclamation Planerose ( B )
  - Magyar Ginkgo ( B )
  - Skyline Locust ( B )
  - Triumph Elm ( B )

Note: The total quantity of parkway trees included in Final Design will be at a ratio of 65% A's and 35% B's from above list.  
\* Note: Limited 2" caliper trees may be used for inventory shortages.
- Proposed Intermediate Common Area Parkway Trees, 2.5" or 8' m/s  
Planted at approx. 25' o.c. during Site Development  
Species :
  - American Hophornbeam
  - Redbud
  - Apple Serviceberry
  - Thornless Hawthorn

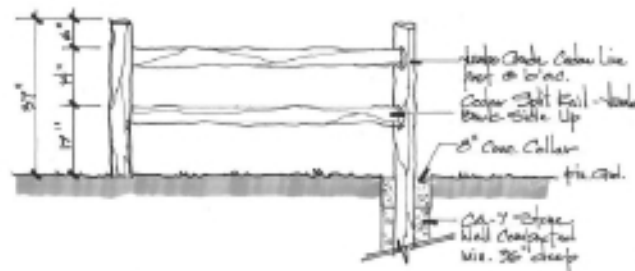
Note: The above understory trees will only be used in limited, highly reserved areas or to screen the existing Nokta parking lot.

**PARKWAY CONSTRUCTION NOTES :**

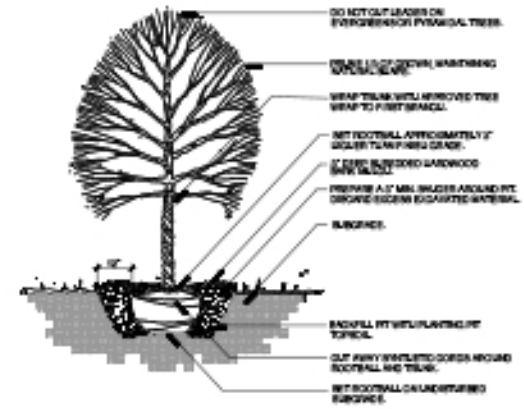
- No more than 10% of the total quantity may be added to list.
- No more than 5 trees of the same species may be planted adjacent to each other for landscape variability.
- Understory trees shall be added in areas with an understory utility corridor.
- Plant material (size, branching and leaf shape) shall conform to the "American Standards for Nursery Stock" (ANSI A623) by the American Association of Nurserymen, Inc.
- Plant material shall be nursery grown and be either balled and burlapped or container grown. Balls and sprays are plant list dependent unless otherwise indicated.
- Quantity shall be supplied as a minimum. Contractor shall verify all quantities, and in case of underplanting, the plan shall prevail.
- Trees shall be set back a minimum of 10' (12' with horizontal root utility structures, including, but not limited to, overhead, water main, gas, and electric, transmission and distribution lines). Trees shall be set back a minimum of 5' (6' with horizontal root utility structures, water, sewer and underground utility lines). Approval of the Landscape Architect is required when this adjustment is not conform to the intent of this plan.
- No trees, shrubs or plantings shall be allowed 10' in front, 5' on the sides, and 7' to the rear of the stipulated boundaries.
- Contractor shall report any obstructions in the field to the Landscape Architect and/or Owner.
- The Landscape Contractor shall verify location of all underground utilities prior to digging. It is required to Contact ALLIANCE (1.800.888.0123), and any other public or private utility organizations for utility location. All located prior to construction.
- Where underground utilities exist, all field adjust notes shall be approved by the Landscape Architect.
- The Landscape Contractor shall verify plant material, ball and soil ratios, and the planting hole between adjacent stipulated and un-stipulated areas by the owner. Consider providing all supplemental watering and proper care and maintenance of all plant material, ball and soil ratios after completion of Landscape Contractor work.
- No plants will be changed or substituted without the approval of the Landscape Architect and the City of Naperville.
- Landscape Contractor shall excavate all materials and labor for a period of one year from the date of final acceptance and shall remove any debris and replace all dead plant material as required during the warranty period.



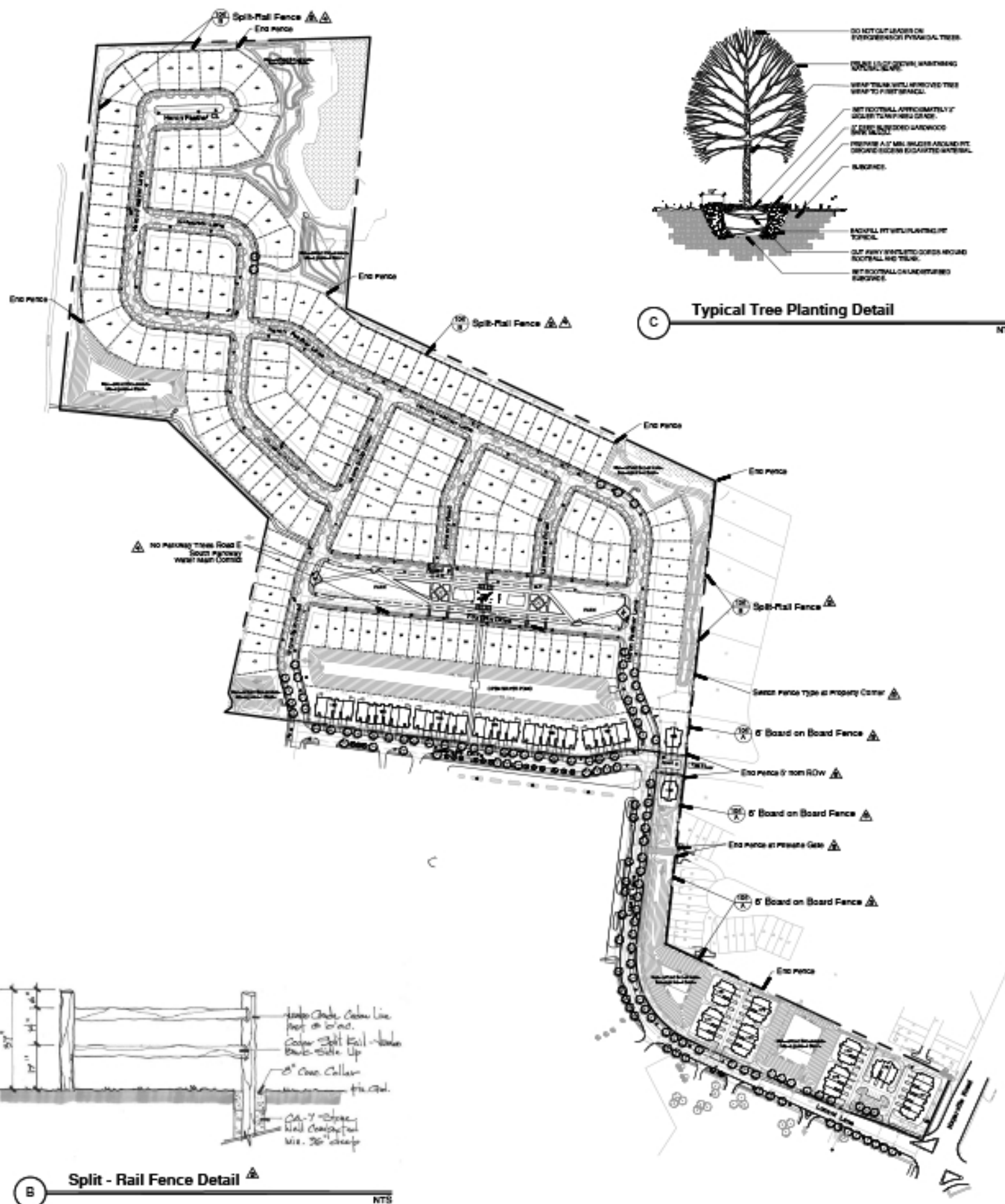
**A** 6' Wood Board on Board Fence Detail NTS



**B** Split-Rail Fence Detail NTS



**C** Typical Tree Planting Detail NTS



**Naper Commons**

Naperville, Illinois

**Preliminary Parkway Tree & Fence Exhibit**



North arrow pointing up. Scale: 1" = 175'0"

8/10/2021	Per City Review #1
8/24/2021	Per City Review #2
1/20/2021	Per City Review #3
11/18/2020	Per City Review #4
10/18/2020	Per City Review #5

original issue date: 14 September 2020



**Preliminary Plant Material Legend : ( Sheet L.101 - L.105 )**

-  **Parkway Trees, 2.5" Caliper**  
See Sheet L.101
-  **Shade Trees, 2.5" - 3" Caliper**  
Autumn Flower Maple, Greening White Oak, State Street Maple, Chicago Blue Highberry, Shawnee Green Baldcypress, Kentucky Coffeetree, Redmond Linden, Exclamation London Planetree, Amur Maple, Blue Oak, Skyline Locust, Trumpet Elm
-  **Shade Trees, 6" - 12" m/s**  
River Birch
-  **Ornamental Trees, 6" - 8" m/s**  
Blackhaw Viburnum, Fraxino Fire Crab, Apple Serviceberry, Lady Oak Tree Lilac, Redbud, Thornless Cologan Hawthorne, Sargent Oak, Caroway White Ash
-  **Evergreen Trees, 6" - 8" tall**  
Norway Spruce, Fairview Juniper, Colorado Spruce, Wintergreen Arborvitae, White Pine, Mexican Arborvitae, Black Hills Spruce, Caroway Juniper
-  **Evergreen Shrubs, 18" - 24" wide**  
Hughes Juniper, Green Sargent Juniper, Holly Compact Juniper
-  **Deciduous Shrubs, 18" - 24" tall**  
American Ribwort, Green Sumac, Black Chokeberry, Miss Kim Lilac, Dogwood Vine, Viburnum Var., Prairie Hydrangea, Shrub Rose Var., Texas Scarlet Quince, Spirea Var., Anabelle Hydrangea, Elderberry
-  **Perennials, Orn'l Grasses & Groundcovers, 1gal.**  
Festiver Reed Grass, Shylla sp., Prairie Dogwood, Blue Wonder Catmint, Switchgrass, Black Eye Susan, Ligularia, Russian Sage, Ast. Moor Grass, Allium sp., Sedum sp., Arsenia sp.



**Plant Material Restrictions :**

**Native Plant Material :**

All plantings in existing wetland buffers, or in any common areas adjacent to Forest Preserve Property, shall be limited to species native to Northern Illinois. All Residential Lots are exempt from this requirement.

**Invasive Plant Material :**

Invasive plant materials ( as listed below ) are prohibited in all areas of the Development - Including on Residential Lots.

**Prohibited Invasive Species:**

**Trees :** Callery Pear, Norway Maple, Amur Maple, Cornus mas, Autumn Olive and Black Alder  
**Shrubs :** Jap Barberry, Buckhorn, Amur Honeysuckle, Burning Bush and Common Privet  
**Perennials & GC :** Purple Loosestrife and Purple Wintercreeper ( Euonymus coloratus )

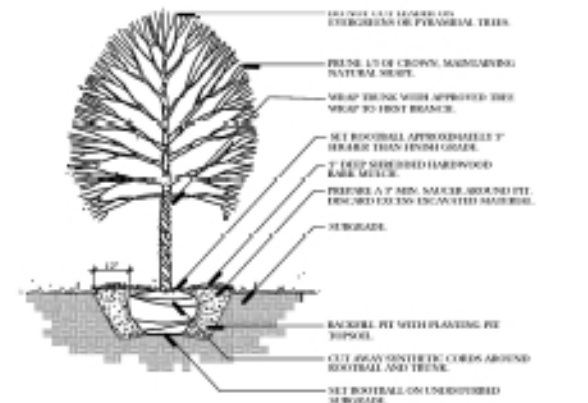
**Native Species :**

- Proposed Plantings in all wetland buffer areas shall be species native to Northern Illinois

**CONSTRUCTION NOTES :**

- Soil test shall be conducted on each lot with an approved list of approved laboratory facilities. Soil with a minimum soil depth of 12" (See Sheet L.102 for Soil Notes)
- Plant material shall be delivered to site with roots and soil. Planting shall be completed in all areas.
- Plant material shall be delivered to site with a 12-18" (12-18") spreader to deliver a rate of 100 lbs. per acre.
- Plant material, including all trees, groundcover and annual flower beds with 1 CY. mulch, must comply with 100% NTS, submitted to the City.
- Mulch all trees, shrubs, perennials & orn'l grasses with a minimum of 2" (2") thick shredded hardwood bark mulch.
- Mulch all groundcover and annual beds with minimum of 2" thick pine bark mulch.
- All lot beds and beds (except raised) to be 4" deep (except 6") between beds and under walks.
- All irrigation (except 1800) and shrubs must be (grown in a natural shape) and not thinned.
- Plant material (including trees) and soil shall conform to the "American Standards for Nursery Stock" (ANSI Z603.1) by the American Association of Nurserymen, Inc.
- Plant material shall be healthy (green and leafy) and shall be delivered to site with a minimum of 10% NTS.
- Quantity shall be supplied as a minimum. Contractor shall verify all quantities, and in case of a discrepancy, the plan shall prevail.
- The Landowner/Contractor shall adjust plant locations to fit the available space (from the hydraulic, 1800 parts, all utility structures, driveways and sidewalks). Approval of the Landowner/Architect is required when NTS adjustments to be implemented do not conform to the intent of the plan.
- Contractor shall report any discrepancies to the City or the Landowner/Architect and/or Owner.
- The Landowner/Contractor shall verify location of all utility structures (1800) prior to digging. It is required to Contact 311-622-8212, and any other public or private utility necessary for utility location will be provided prior to construction.
- Where underground utility lines, all NTS adjustments shall be reported by the contractor.
- The Landowner/Contractor shall verify plant material, soil and soil tests and shall verify all quantities of all plant material, soil and soil tests. Owner to provide all supplemental watering and proper care and maintenance of all plant material, soil and soil tests after completion of Landowner/Contractor work.
- Materials will be supplied as indicated unless the approval of the Landowner/Architect and the City of Naperville.
- Landowner/Contractor shall guarantee all material and labor for a period of one year from the date of final acceptance and shall repair any defects and replace all dead plant material as required during the warranty period.
- Trees shall be set back a minimum of 10' (10') NTS horizontally from all utility structures, including, but not limited to, overhead, utility vaults, utility vaults, transformers and utility vaults. Trees shall be set back a minimum of 10' (10') NTS horizontally from boundary lines, utility structures and utility vaults. Approval of the Landowner/Architect is required when NTS adjustments to be implemented do not conform to the intent of the plan.
- Parkway Trees shall be set back 5' (5') NTS from all storm drains.

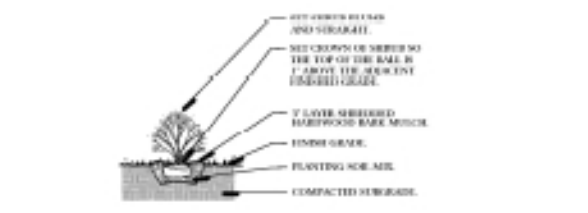
- Installation of the equipment and installation of the equipment shall be done in accordance with the manufacturer's instructions for operation, maintenance and replacement of the equipment. The electrical utility required for the following equipment shall be in the form and 10' (10') NTS on the site.
- All plantings (including foundation plants) shall be set back a minimum of 10' (10') NTS from all utility structures.
- Trees shall be set back a minimum of 10' (10') NTS horizontally from all utility structures.



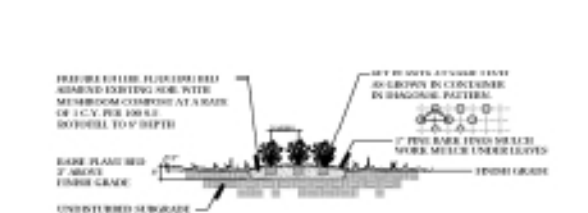
**B Typical Tree Planting Detail** NTS



**C Typical Evergreen Planting Detail** NTS



**D Typical Shrub Planting Detail** NTS



**E Typical Perennial Planting Detail** NTS

Land Planning  
Landscape Architecture  
Environmental Site Design

18 W. Weber Drive • Naperville, IL 60563-0200 • 630.206.0000

Project

**Naper Commons**

Naperville, Illinois

Sheet Description

**Plant Legend, Notes & Planting Details**

Owner



North: [Arrow pointing up] Scale: [Scale bar]

Revision	Date	Description
1	8/10/2021	Per City Review #1 (New Site Plan) dated 7/20/2021
2	8/24/2021	Per City Review #2 (New Site Plan) dated 7/20/2021
3	1/20/2022	Per City Review #3 (Enhanced Buffer)
4	11/18/2020	Per City Review #4
5	10/18/2020	Per City Review #1

original issue date: **14 September 2020**  
 design by: \_\_\_\_\_  
 checked by: \_\_\_\_\_  
 project no.: **20219**  
 sheet no.: \_\_\_\_\_

project:

# Naper Commons

Naperville, Illinois

sheet description:

## Preliminary Turf Exhibit & Naturalized SWM Basin

date:



north: scale: 1" = 1750'

revision:	date:	description:
1	08/10/2021	Per City Review / New SWM Plan
2	09/02/2021	Per City Review / New SWM Plan
3	10/02/2021	Per City Review / New SWM Plan
4	11/18/2020	Per City Review #2
5	10/18/2020	Per City Review #1

original issue date: 14 September 2020

design by:	
checked by:	
project no.:	20219
sheet no.:	

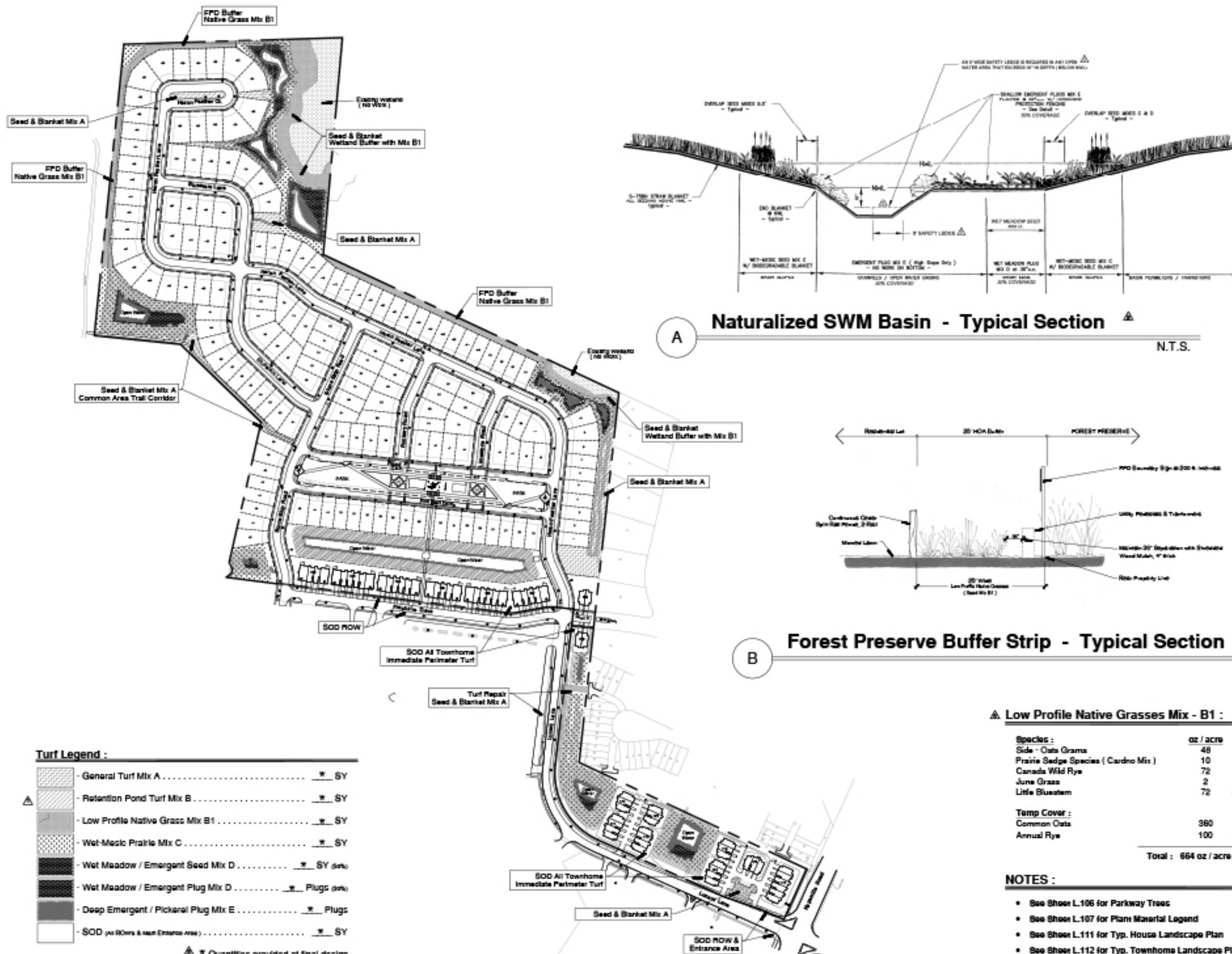


EXHIBIT E

**Turf Legend :**

	General Turf Mix A	* SY
	Retention Pond Turf Mix B	* SY
	Low Profile Native Grass Mix B1	* SY
	Wet-Mesic Prairie Mix C	* SY
	Wet Meadow / Emergent Seed Mix D	* SY (plugs)
	Wet Meadow / Emergent Plug Mix D	* Plugs (plugs)
	Deep Emergent / Pickerel Plug Mix E	* Plugs
	SOD (at ROWs & Main Entrance Area)	* SY

\* Quantities provided at final design

**▲ Low Profile Native Grasses Mix - B1 :**

Species :	oz / acre	
Side - Oats Grama	48	
Prairie Sedge Species ( Cardio Mix )	10	
Canada Wild Rye	72	
June Grass	2	
Little Bluestem	72	Subtotal 204 oz.
<b>Temp Cover :</b>		
Common Oats	360	
Annual Rye	100	Subtotal 460 oz.
<b>Total :</b>		<b>664 oz / acre</b>

- NOTES :**
- See Sheet L.106 for Parkway Trees
  - See Sheet L.107 for Plant Material Legend
  - See Sheet L.111 for Typ. House Landscape Plan
  - See Sheet L.112 for Typ. Townhome Landscape Plan

**PLANT MATERIAL LEGEND :** [ Sheets L.111 Only ]

-  **Ornamental Trees, 6' m/s or 2" Caliper**  
River Birch, 'Royal Raindrops' Crab, Red Jewel Crab, Aron Magnolia, Apple Serviceberry, Jap Tree Lilac
-  **Large Evergreen Trees, 6' tall**  
Bank Hills Spruce, Swiss Stone Pine, Colorado Spruce, Canadian Hemlock
-  **Upright Evergreens, 4' - 5' tall**  
Hooks #8 Upright Juniper, Wintergreen Arborvitae, Mission Arborvitae, Fairview Juniper
-  **Evergreen Shrubs, 18" - 24" wide**  
Grisse Yew, Green Velvet Boxwood
-  **Junipers, 18" wide**  
Killey Compact Juniper, 'Hughes' Juniper
-  **Deciduous Shrubs, 18" - 36" tall**  
Peking Cotoneaster - L, Black Chokeberry - M, Redtwig Dogwood - L, Umelight Hydrangea - L, Double Take Pink Guinoc - M, G.M. Alpine Currant - S, Goldmound Spirea - S, Annabelle Hydrangea - M, Little Princess Spirea - S, Yellow Potentilla - S, Mahican Viburnum - L, K.O. Shrub Rose - S, Snow Mound Spirea - M, Alaska Kim Lilac - L, Bronx Forsythia - S, Blue Muffin Vib. - M
-  **Perennials, 1gal.**  
Yellow Coreopsis, Purple Coneflower - Pale, Autumn Joy Sedum, Happy Return Daylily, Max Frei Geranium, August Moon Hosta, Royal Standard Hosta, Blue Wonder Catmint, Summer Peak-a-boo Allium, Montrose White Calamint

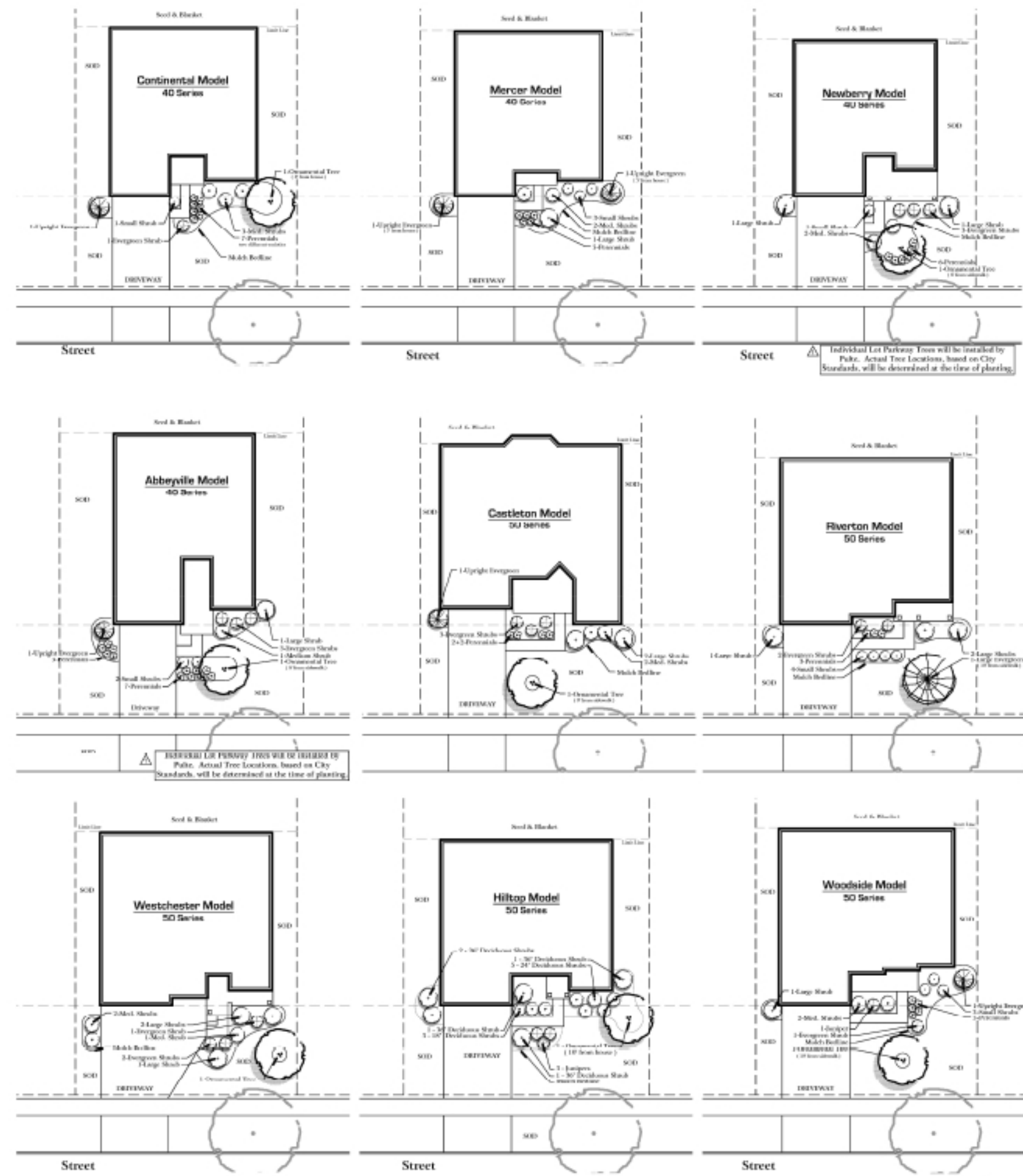
**CONSTRUCTION NOTES :**

- Sod all Lot curf areas as noted with an approved blend of improved Kentucky Bluegrass Sod with a mineral soil back.
- Fine grading shall provide slopes which are smooth and continuous. Positive drainage shall be provided in all areas.
- Prior to top installation all areas shall be fertilized with a 12-12-12 granular fertilizer at a rate of 400 lbs. per Acre.
- Prepare perennial, ornamental grass, groundcover and annual flower beds with 1 CY. mushroom compost per 100 SF, installed to an 8" depth.
- Mulch all trees, shrubs, perennials & lawn grass beds with a minimum of three (3) inches shredded hardwood bark mulch.
- Mulch all groundcover and annual beds with minimum of one (1) inch pinebark fines.
- All bed lines and tree saucers require a 4" deep spaded edge between lawn and mulch areas.
- All evergreen (conifers) trees and shrubs must be grown in a natural shape - and top sheared.
- Plant material sizing, branching and ball sizes shall conform to the "American Standards for Nursery Stock" (latest edition) by the American Association of Nurserymen, Inc.
- Plant material shall be nursery grown and be either balled and burlapped or container grown. Sizes and spreads on plant tags represent minimum requirements.
- Quantity lists are supplied as a convenience. Contractor shall verify all quantities, and in case of a discrepancy, the plan shall prevail.
- The Landscape Contractor shall adjust plant locations in field to maintain appropriate spacing from fire hydrants, light poles, all utility structures, driveways and sidewalks. Approval of the Landscape Architect is required when field adjustments to be implemented do not conform to the intent of the plans.
- Contractor shall report any discrepancies in the field to the Landscape Architect and/or Owner.
- The Landscape Contractor shall verify locations of all underground utilities prior to digging, to required to Contact J.U.L.I.C. (1.800.892.0123), and any other public or private agency necessary for utility location 48 hours prior to construction.
- Where underground utilities exist, all field adjustments must be approved by the landscape architect.
- The Landscape Contractor shall water plant material, seed and soil areas until the plants have become adequately established and until final acceptance by the owner. Owner to provide all supplemental watering and proper care and maintenance of all plant materials, seed and soil areas after acceptance of Landscape Contractors work.
- No plants are to be changed or substituted without the approval of the Landscape Architect and the City of Naperville.
- Landscape Contractor shall warrant all material and labor for a period of one year from the date of final acceptance and shall repair any defects and replace all dead plant material as required during the warranty period.

**Note:** Typical Home Planting Plans show the general layout, plant material selections and design intent. Final Plans will be adjusted as required for utilities, drainage and adjacent plantings.

**Contractor Quality Control :**

- Upon Completion of landscape installation, and prior to final acceptance, the Contractor shall:
  - Lightly hedgecut all trees and evergreens to remove broken, crossing or mis-shaped branches.
  - On clamp-on arborvitae trees, remove all minor branches, spurs and stems from the bottom 30" of the main trunk.
  - Lightly hedgecut all shrubs to remove wild branches and insure uniformity in groups of similar shrubs.
  - Check head all perennials plants to remove all old flowers and dead or diseased foliage.
  - Remove all nursery tags and ribbons from all plantings.
  - Head water all plant material.
  - Rake out mulch beds to insure a smooth, uniform layer with a sharp, defined spade edge.



Land Planning  
Landscape Architecture  
Environmental Site Design

**Naper Commons**

Naperville, Illinois

**Prototypical House Planting Plans**



scale: 1" = 10'0"

date	description
8/12/20	Per Plan Review #1
8/24/20	Per City Review / New Site Plan dated 7/22/2020
1/22/21	Per Plan Review #2 & Enhanced Bulletin
11/18/20	Per City Review #2
10/18/20	Per City Review #1

original issue date: 14 September 2020

created by:  
checked by:  
project no.: 20219  
sheet no.:

**PLANT MATERIAL LEGEND :** [ Sheets 1, 112 only ]

-  **Ornamental Trees, 8" - 8" x 6" or 2.5" cal.**  
 20 % Royal Palm Tree, 8" or 2.5"  
 20 % Red Jewel Crab, 8" or 2.5"  
 20 % Purple Desert Olive, 8"  
 20 % Eastern Redbud, 8"  
 20 % Common Wild Shrub, 8" (shade)  
 20 % Ivory Silk Tree Ulae, 8"
-  **Upright Evergreens, 4'-6" tall**  
 20 % Mission Arbovitae, 4"  
 20 % Fairview Upright Juniper, 4"  
 20 % Herb Wintgreen Arborvitae, 4"
-  **Evergreen Shrubs, 18" - 24" wide**  
 20 % Dwarf Pine, 24"  
 20 % Green Velvet Rosewood, 18"  
 20 % Honey Compact Juniper, 18"  
 20 % Hughes Juniper, 18"
-  **Deciduous Shrubs, 18" - 36" tall**  
 20 % Pinking Cornflower, 24" (large)  
 20 % Blue Muffin Yucca, 24" (large)  
 20 % Coral Yucca, 24" (large)  
 20 % Lime/White Hydrangea, 30" (large)  
 20 % Miss Kim Ulae, 36" (large)  
 50 % Anabelle Hydrangea, 24" (med.)  
 20 % Black Lace Eucalyptus, 24" (med.)  
 20 % Knockout Shrub Rose, 18" (med.)  
 20 % Lavender Spirea, 24" (med.)  
 20 % Little Quickfire hydrangea, 24" (med.)  
 20 % G.M. Alpine Current, 24" (small)  
 20 % Goldband Spirea, 18" (small)  
 20 % Snow Fuchsia (small)  
 20 % Potentilla - Yellow, 18" (small)  
 20 % Little Princess Spirea, 30" (small)
-  **Perennial**  
 20 % Blue Wonder Catmint  
 20 % Hazy Return Davila  
 20 % Autumn Joy Sedum  
 20 % Summer Beauty Allium  
 20 % Hosta Gold Standard

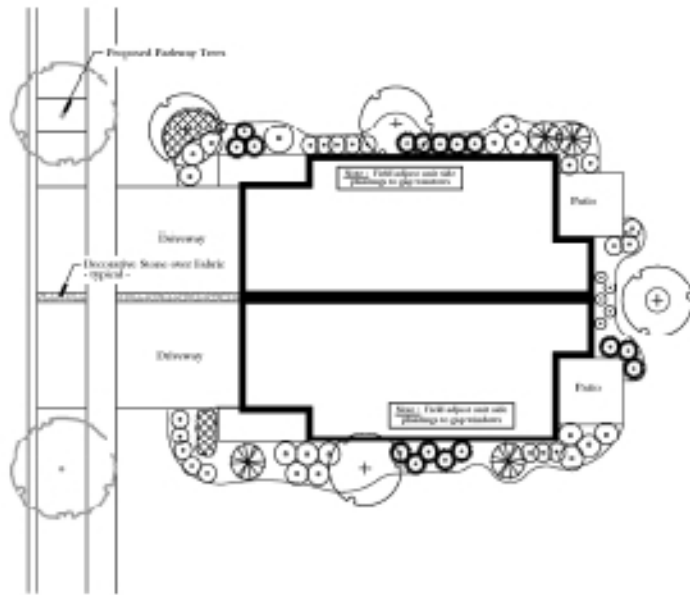
**CONSTRUCTION NOTES :**

- Sod all Lot turf areas as noted with an approved blend of improved Kentucky Bluegrass Sod with a mineral soil back.
- Fine grading shall provide slopes which are smooth and continuous. Positive drainage shall be provided in all areas.
- Prior to turf installation all areas shall be fertilized with a 10-10-10 granular fertilizer at a rate of 400 lbs. per acre.
- Prepare perennial, ornamental grass, groundcover and annual flower beds with 1 cu. yd. mushroom compost per 100 sq. ft. installed to an 8" depth.
- Mulch all trees, shrub, perennial (6 sqm) grass beds with a minimum of three (3) inches shredded hardwood bark mulch.
- Mulch all groundcover and annual beds with minimum of one (1) inch bark mulch.
- All bed lines and tree saucers require a 4" deep spaded edge between lawn and mulch areas.
- All evergreen (hardens) trees and shrubs must be green in a natural shape and not sheared.
- Plant material sizing, branching and ball sizes shall conform to the "American Standards for Nursery Stock" (latest edition) by the American Association of Nurserymen, Inc.
- Plant material shall be nursery grown and be either balled and burlapped or container grown. Sizes and spreads on plant list represent minimum requirements.
- Quantity lists are supplied as a convenience. Contractor shall verify all quantities, and in case of a discrepancy, the plan shall prevail.
- The Landscape Contractor shall adjust plant locations in field to maintain appropriate spacing from fire hydrants, light poles, all utility structures, driveways and sidewalks. Approval of the Landscape Architect is required when field adjustments to be implemented do not conform to the intent of the plan.
- Contractor shall report any discrepancies in the field to the Landscape Architect and/or Owner.
- The Landscape Contractor shall verify locations of all underground utilities prior to digging, is required to Contact 4-M.A.I.C. (1-800-485-4142), and any other public or private agency necessary re: seeing section 140 hours prior to construction.
- Where underground utilities exist, all field adjustments must be approved by the landscape architect.
- The Landscape Contractor shall water plant material, soil and soil areas until the plants have become adequately established and until final acceptance by the owner. Owner to provide all supplemental watering and proper care and maintenance of all plant materials, soil and soil areas after acceptance of Landscape Contractor's work.
- No plants are to be changed or substituted without the approval of the Landscape Architect and the City of Naperville.
- Landscape Contractor shall warrant all material and labor for a period of one year from the date of final acceptance and shall repair any defects and replace all dead plant material as required during the warranty period.

**Note:** Typical Home Planting Plans show the general layout, plant material selections and design intent. Final Plans will be adjusted as required for utilities, drainage and adjacent plantings.

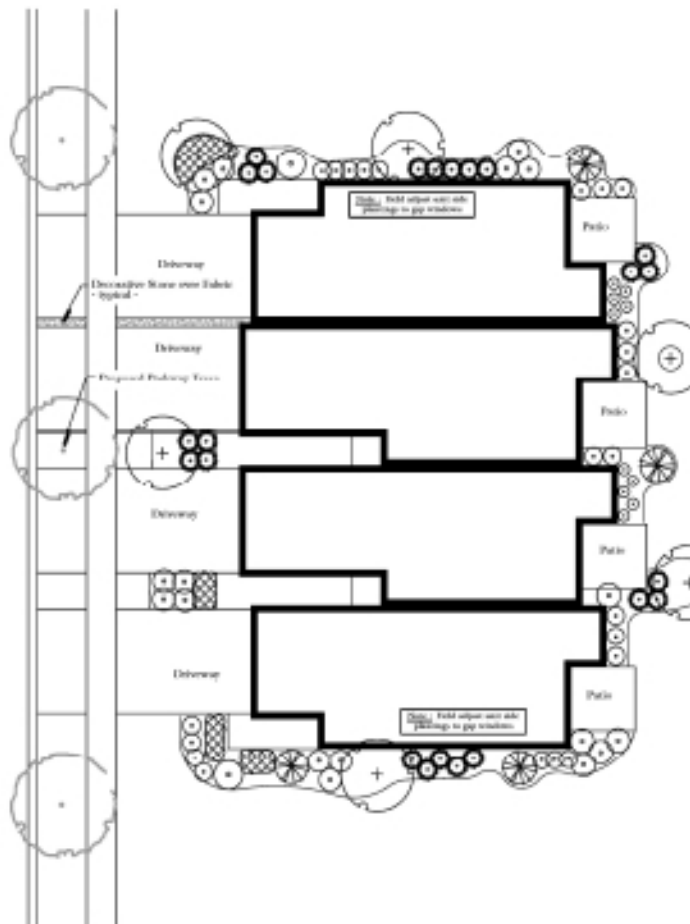
**Contractor Quality Control :**

- Upon Completion of landscape installation, and prior to final acceptance, the Contractor shall:
  - Lightly hedge/grade all trees and evergreens to remove broken, crossing or mis-shaped branches.
  - On large/primary ornamental trees, re-set all major lateral, vertical and stems from the trunk (8") of the main trunk.
  - Lightly hedge/grade all shrubs to remove wild branches and insure uniformity in groups of similar shrubs.
  - Dead head all ornamental plants to remove all old flowers and dead or discolored foliage.
  - Remove all nursery tags and ribbons from all plantings.
  - Head water all plant material.
  - Rake out mulch beds to insure a smooth, uniform layer with a sharp, defined spade edge.



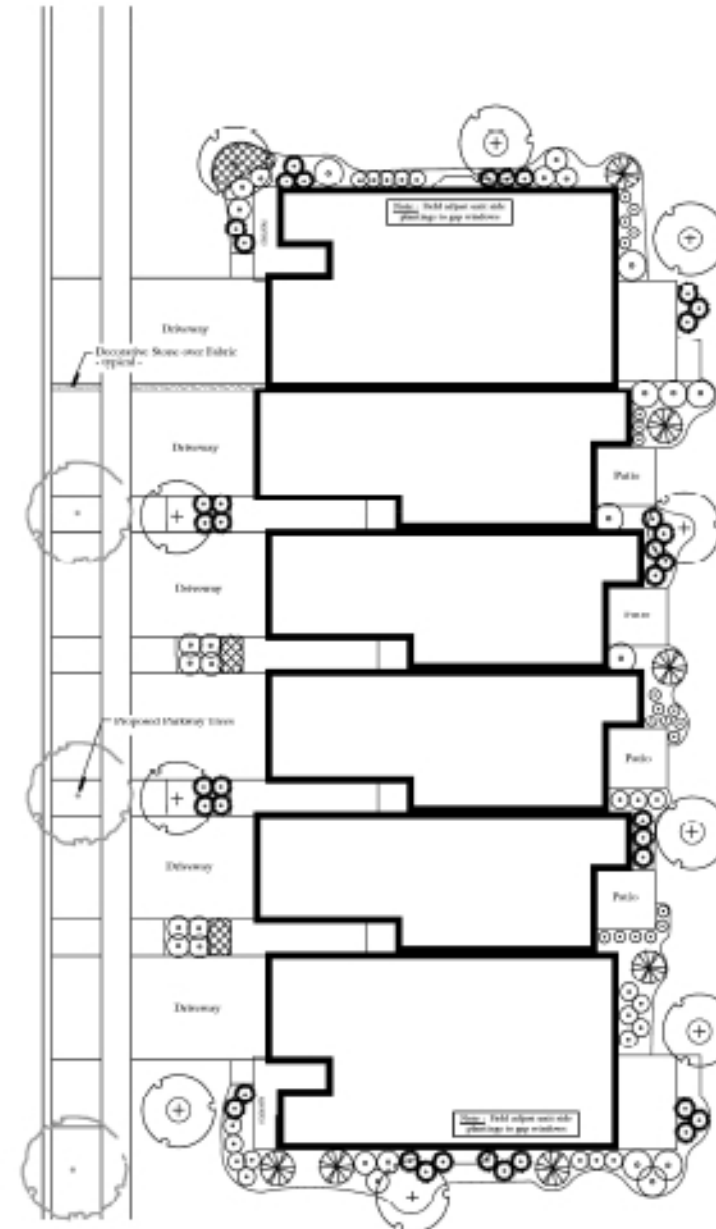
**Typical 2 - Unit Building**

scale: 1" = 15'0"



**Typical 4 - Unit Building**

scale: 1" = 15'0"



**Typical 6 - Unit Building**

scale: 1" = 15'0"



Land Planning  
Landscape Architecture  
Environmental Site Design

project:

**Naper Commons**

Naperville, Illinois

sheet description:

**Typical Townhome Landscape Package**

client:



scale: 1" = 10'0"

3/10/2021	Per Plan/Rev A/B Sheet
2/24/2021	Per City Review / New Site Plan added 1.20.2021
1/20/2021	Per Plan/Rev C Plan & Enhanced Billings
11/18/2020	Per City Review #2
10/18/2020	Per City Review #1

original issue date: 14 September 2020

design by:  
checked by:  
project no.: 20219  
sheet no.:

project:

# Naper Commons

Naperville, Illinois

sheet description:

## Preliminary Project Signage

client:

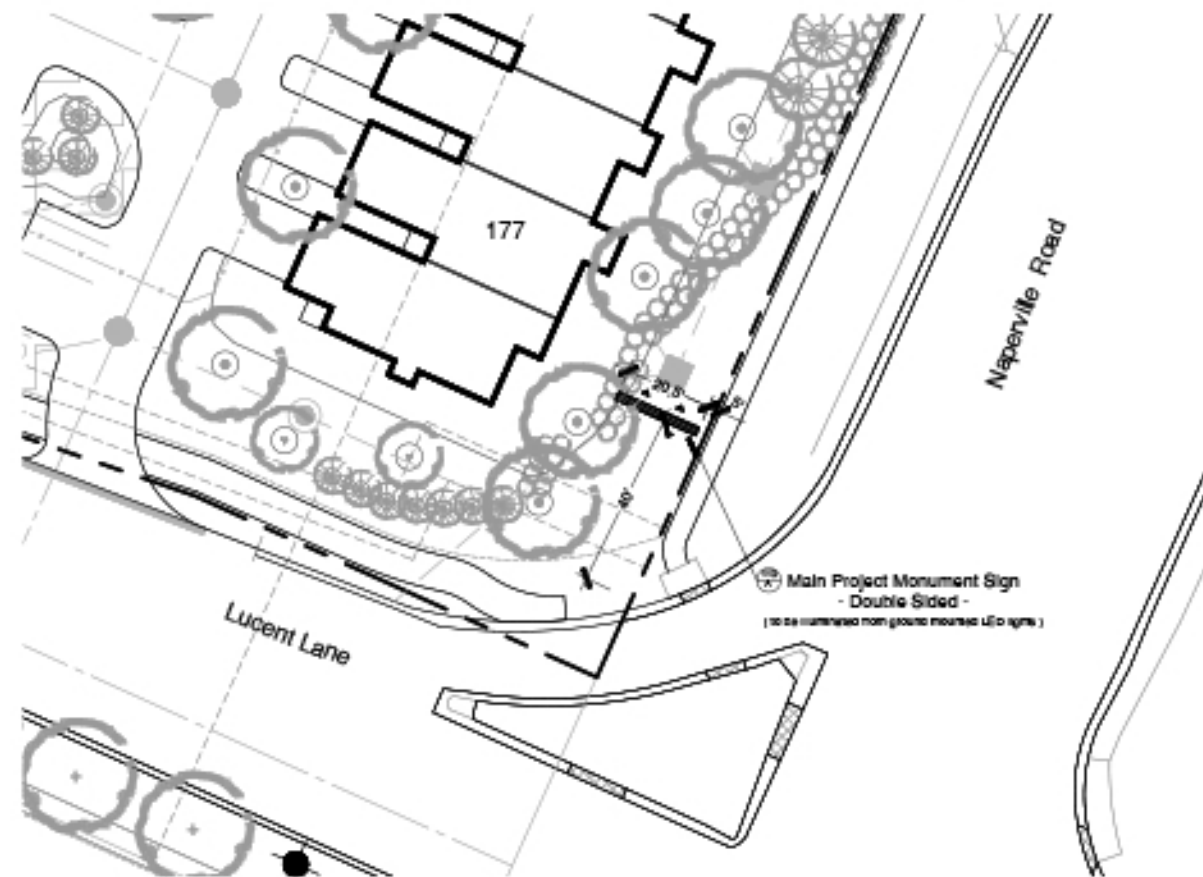


north: scale: As Noted

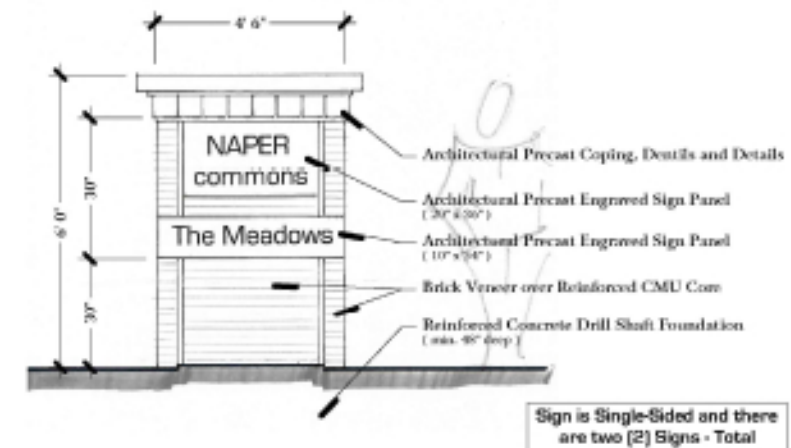
0.10.2021	Per Planbook Add Sheet
0.24.2021	Per City Review / New Sign Plan added 1.20.2021
1.20.2021	Per Planbook Plan & Enhanced Elevation
11.18.2020	Per City Review #2
10.18.2020	Per City Review #1

original issue date: 14 September 2020

design by:  
checked by:  
project no.: 20219  
sheet no.:



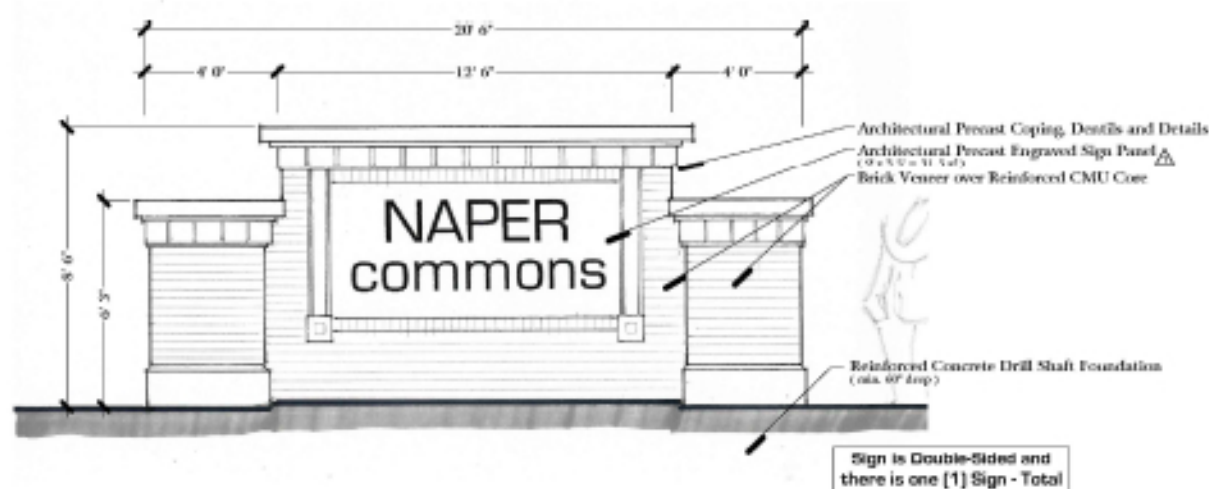
These are Preliminary elevations intended to show overall dimensions, materials and massing. These plans may be modified, or revised, in the Final Design Phase.



Sign is Single-Sided and there are two (2) Signs - Total

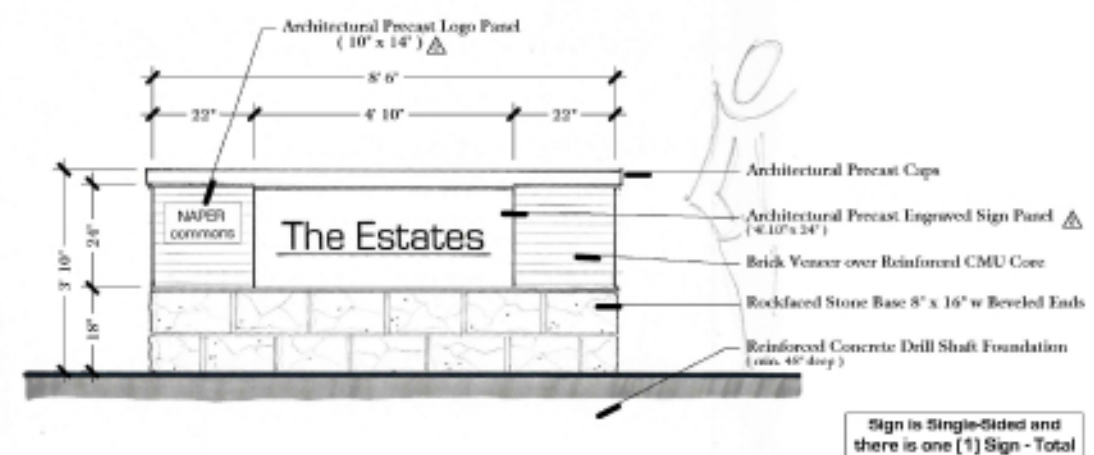
**A Main Monument Sign - Location Plan**  
scale: 1" = 20'0"

**B Secondary Monument & Neighborhood Identification Sign**  
scale: N.T.S.



Sign is Double-Sided and there is one (1) Sign - Total

**A Main Monument Sign - Elevation**  
approx. scale: 3/8" = 1'0"



Sign is Single-Sided and there is one (1) Sign - Total

**C Neighborhood Identification Sign**  
approx. scale: 3/4" = 1'0"