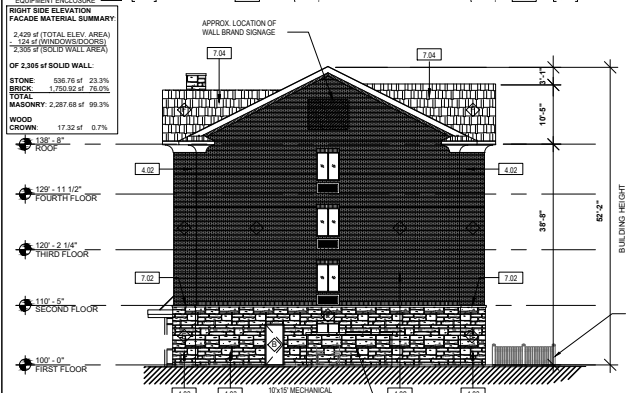




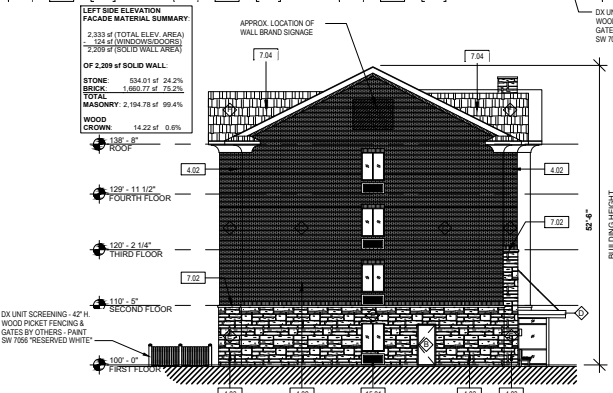
UPTOWN SUITES - FRONT ELEVATION
SCALE: 3/64" = 1'-0"



UPTOWN SUITES - REAR ELEVATION
SCALE: 3/64" = 1'-0"



UPTOWN SUITES - RIGHT SIDE ELEVATION
SCALE: 3/64" = 1'-0"



UPTOWN SUITES - LEFT SIDE ELEVATION
SCALE: 3/64" = 1'-0"

FACADE MATERIAL TOTALS

| | | |
|---------|--------------|--------------------|
| STONE | 27,004 sf | (TOTAL ELEV. AREA) |
| BRICK | 14,541.96 sf | (TOTAL ELEV. AREA) |
| TOTAL | 41,545.96 sf | (TOTAL ELEV. AREA) |
| MASONRY | 20,726.97 sf | (TOTAL ELEV. AREA) |
| STUCCO | 1,679.92 sf | (TOTAL ELEV. AREA) |
| WOOD | 576.31 sf | (TOTAL ELEV. AREA) |

OF 23,177 sf SOLID WALL

| | | |
|---------|--------------|-------|
| STONE | 6,676.91 sf | 28.8% |
| BRICK | 14,541.96 sf | 58.5% |
| TOTAL | 21,218.87 sf | 91.3% |
| MASONRY | 20,726.97 sf | 89.4% |
| STUCCO | 1,679.92 sf | 8.1% |
| WOOD | 576.31 sf | 2.5% |

- COLOR SCHEDULE**
- 1. COLOR: SHERWIN WILLIAMS #SW 7056 "RESERVED WHITE"
 - 2. COLOR: SHERWIN WILLIAMS #SW 7017 "DORIAN GRAY"
 - 3. BRICK MFR: TAYLOR BRICK STYLE: "317 D RED"
 - 4. BRICK MFR: CHEROKEE BRICK STYLE: "YELLOW LIGHT GRAY"
 - 5. STONE MFR: ELDORADO STONE STYLE: "MONTICUTO CLIFFSTONE"
 - 6. SHINGLE MFR: GAF STYLE: "TIMBERLINE NATURAL SHADOW" COLOR: "SLATE"
- KEYNOTE LEGEND**
- 4.02 APPLIED MANUFACTURED BRICK VENEER
 - 4.03 APPLIED MANUFACTURED STONE VENEER
 - 5.01 5/4" ALUMINUM GUTTERS AND DOWNSPOUTS
 - 7.02 4" STONE LEDGER
 - 7.03 3/4" EXTERIOR STUCCO: SEE COLOR SCHEDULE
 - 7.04 ASPHALT COMPOSITION SHINGLES
 - 15.01 THRU-WALL HVAC UNIT

B|R|R
ARCHITECTURE

ARCHITECT OF RECORD
6706 AVENUE 111, NAPERVILLE, IL 60563
PHONE: 630-382-0005 FAX: 630-325-3491

ELEVATIONS

UPTOWN SUITES
1809 DIEHL RD., NAPERVILLE, IL
PLAN REVIEW #17-10000036

SHEET 1 OF 4



Front Elevation



Right Elevation



Left Elevation



Rear Elevation