

OSTARA ROW HOMES

SPRING AVENUE | NAPERVILLE, ILLINOIS

PROJECT TEAM

OWNER / DEVELOPER:

KRAMER HOMES
315 CENTENNIAL COURT
NAPERVILLE, IL 60540
TEL (630) 917-2700
CONTACT: RICH KRAMER

LAND PLANNER / CIVIL ENGINEER:

CEMCON
2280 WHITE OAK CIRCLE, SUITE 100
AURORA, IL 60502
TEL (630) 862-2100
CONTACT: PETE PLUSKWA / CHRIS MORGART

PLANNER / ARCHITECT:

TORCH ARCHITECTURE
300 E 5TH AVENUE, SUITE 102
NAPERVILLE, IL 60563
TEL (630) 420-1900
CONTACT: RACHEL CONOVER

LANDSCAPE ARCHITECT:

DICKSON DESIGN STUDIO, INC.
9 CRYSTAL LAKE ROAD, SUITE 110
LAKE IN THE HILLS, IL 60156
TEL (224) 241-8181
CONTACT: SHARON DICKSON / JEFF TORRENS

ARBORIST:

DAVEY RESOURCE GROUP, INC.
NATURAL RESOURCE CONSULTING
TEL (414) 517-1695
CONTACT: PETE SORENSEN

SHEET INDEX

L0.1	SHEET INDEX PROJECT TEAM
L0.2	PLANT SYMBOLS KEY DETAILS: PLANTING NOTES: GENERAL LANDSCAPE NOTES: PER DEPT. OF PUBLIC UTILITIES-ELECTRIC
L1.1	TREE PRESERVATION & REMOVAL PLAN (OVERALL DEVELOPMENT)
L1.2	TREE INVENTORY RATING SCALE: TREE CONDITION / FORM NOTES: TREE PRESERVATION FENCE
L2.0	LANDSCAPE PLAN (OVERALL DEVELOPMENT)
L3.0	DETAILS: PROTOTYPICAL FOUNDATIONS SITE FEATURES (PIER & FENCING)



dickson design
STUDIO

9 CRYSTAL LAKE ROAD
SUITE 110
LAKE IN THE HILLS, IL 60156
(224) 241-8181

CLIENT NAME AND ADDRESS

KRAMER HOMES

NAPERVILLE, ILLINOIS

PLAN DATE

JULY 30, 2025

REVISIONS

1.	10/03/25 PER CITY COMMENTS
2.	10/08/25 MONUMENT LOCATION
3.	11/06/25 PER CITY COMMENTS
4.	01/09/26 PER CITY COMMENTS (ADDED PARKWAY TREE ON SPRING)
5.	01/26/26 PER CLIENT DIRECTION BASED ON NEIGHBOR INPUT
6.	01/27/26 PER SITE PLAN (PARKING ADDED ON SPRING)
7.	04/21/26 PER NEW SITE PLAN
8.	05/26/26 PER CITY COMMENTS
9.	
10.	

PROJECT NAME AND SHEET TITLE

OSTARA ROW HOMES
NAPERVILLE, IL

PRELIMINARY LANDSCAPE PLAN

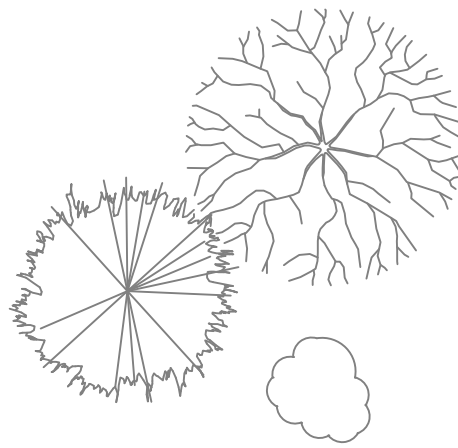
- TITLE SHEET

SHEET NUMBER

L0.1

PLANT SYMBOLS KEY & PLANT MIX MATRIX

NOTE!
NOT ALL PLANT SYMBOLS & PLANT VARIETIES MAY BE DEPICTED ON PLANS.



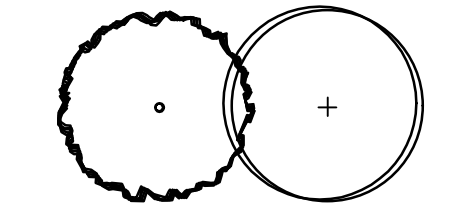
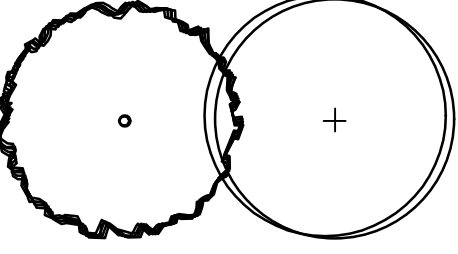
EXISTING DECIDUOUS TREE

EXISTING EVERGREEN TREE

EXISTING SHRUBS & PERENNIALS

SHADE / CANOPY TREES, 2.5"+ CALIPER:

- ACER VARIETIES / MAPLE VAR.
- FAGUS VARIETIES / BEECH VAR.
- CELTIS OCCIDENTALIS / COMMON HACKBERRY
- GLEDITSIA TRIACANTHOS VAR. INERMIS / THORNLESS HONEYLOCUST
- LIQUIDAMBAR STYRACIFLUA / AMERICAN SWEETGUM
- LIRIODENDRON TULIPIFERA / TULIP TREE
- PLATANUS ACERIFOLIA 'MORTON CIRCLE' / LONDON PLANETREE
- QUERCUS BICOLOR / SWAMP WHITE OAK
- TILIA TOMENTOSA 'STERLING SILVER' / STERLING SILVER LINDEN
- ULMUS CARPINIFOLIA 'ACCOLADE' / ACCOLADE ELM

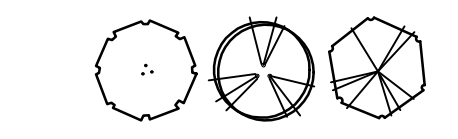


COLUMNAR TREES, 2.5"+ CALIPER:

- CARPINUS BETULUS 'FASTIGATA' / EUROPEAN HORNBEAM
- GINKGO BILOBA 'PRINCETON SENTRY' / PRINCETON SENTRY GINKGO
- QUERCUS 'CRIMSCHMIDT' / CRIMSON SPIRE OAK

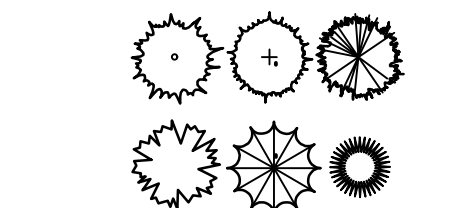
ORNAMENTAL TREES, 6' TALL:

- ALNUS GLUTINOSA / EUROPEAN BLACK ALDER
- AMELANCHIER VARIETIES / SERVICEBERRY VAR.
- BETULA NIGRA / RIVER BIRCH
- CORNUS MAS / CORNELIAN CHERRY
- CRATAEGUS VARIETIES / HAWTHORN VAR.
- HAMAMELIS VARIETIES / WITCHHAZEL VAR.
- MAGNOLIA VARIETIES / MAGNOLIA VAR.
- MALUS VARIETIES / FLOWERING CRABAPPLE VAR.
- SYRINGA RETICULATA / JAPANESE TREE LILAC



EVERGREEN TREES, 6' TALL:

- ABIES CONCOLOR / WHITE FIR
- JUNIPERUS CHINENSIS 'FAIRVIEW' / FAIRVIEW JUNIPER
- JUNIPERUS SCOPULORUM 'WICHITA BLUE' / WICHITA BLUE JUNIPER
- PICEA ABIES / NORWAY SPRUCE
- PICEA GLAUCA 'DENSATA' / BLACK HILLS SPRUCE
- PICEA PUNGENS / COLORADO SPRUCE
- PICEA PUNGENS 'GLAUCA' / COLORADO BLUE SPRUCE
- PINUS STROBUS / EASTERN WHITE PINE
- PSEUDOTSUGA MENZIESII / DOUGLAS FIR
- TAXUS CUSPIDATA 'CAPitata' / CAPITATA YEW
- THUJA VARIETIES / ARBORVITAE VAR.
- TSUGA CANADENSIS / CANADIAN HEMLOCK



LARGE, DECIDUOUS SHRUBS, 36"-48" TALL:

- AESCULUS PARVIFLORA / BOTTLEBRUSH BUCKEYE
- ARONIA VARIETIES / CHOKEBERRY VAR.
- CORNUS VARIETIES / DOGWOOD VAR.
- EUONYMUS ALATA 'COMPACTA' / DWARF BURNING BUSH
- FORSYTHIA 'MEADOWLARK' / MEADOWLARK FORSYTHIA
- FOTHERGILLA GARDENII / DWARF FOTHERGILLA
- HYDRANGEA VARIETIES / HYDRANGEA VAR.
- SYRINGA VARIETIES / LILAC VAR.
- VIBURNUM VARIETIES / VIBURNUM VAR.



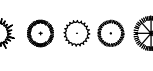
SMALL, DECIDUOUS SHRUBS, 18"-24" TALL:

- HYPERICUM KALMIANUM / ST. JOHNSWORT
- RHUS AROMATICA 'GRO-LOW' / GRO LOW SUMAC
- ROSA VARIETIES / SHRUB ROSE VAR.
- SPIRAEA VARIETIES / SPIREA VAR.



SMALL, EVERGREEN SHRUBS, 24" TALL / WIDE:

- BUXUS VARIETIES / BOXWOOD VAR.
- JUNIPERUS VARIETIES / JUNIPER VAR.
- TAXUS VARIETIES / YEW VAR.



LARGE, ORNAMENTAL GRASS, 3 GALLON & SMALL, ORNAMENTAL GRASS, 1 GALLON:

- CALAMAGROSTIS VARIETIES / REED GRASS VAR.
- PANICUM VARIETIES / SWITCH GRASS VAR.
- PENNISETUM VARIETIES / FOUNTAIN GRASS VAR.
- SCHIZACHYRIUM SCOPARIUM / LITTLE BLUESTEM
- SESLERIA AUTUMNALIS / MOOR GRASS
- SPOROBOLUS HETEROLEPSIS / PRARIE DROPSEED



PERENNIAL FLOWERS & GROUNDCOVER, 1 GALLON:

- MISC. VAR.



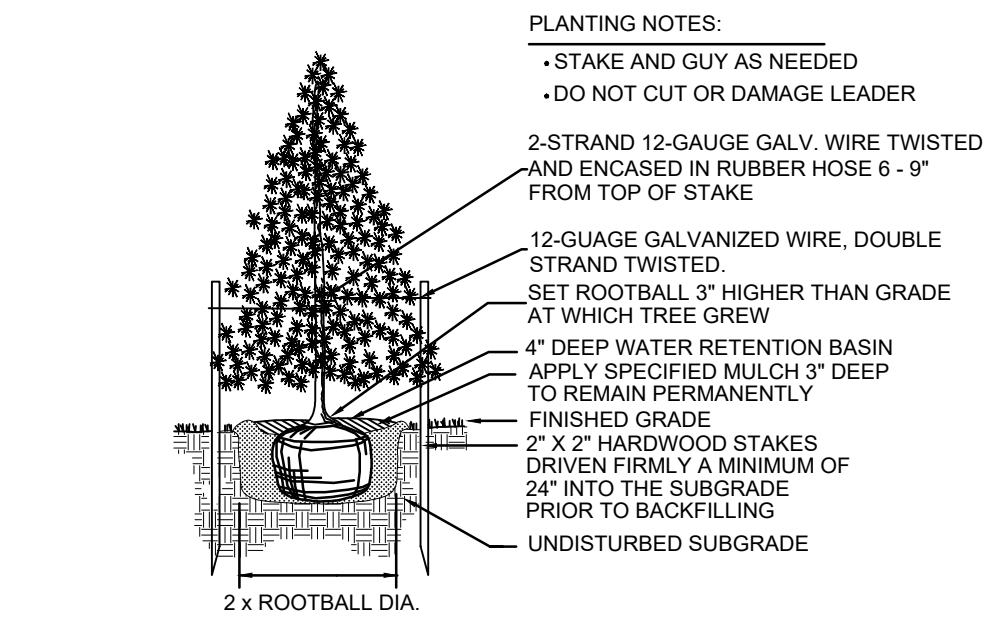
DETAILS: PLANTING

PLANTING NOTES:

- PLANT SO THAT TOP OF ROOT BALL IS EVEN/SLIGHTLY ABOVE FINISHED GRADE
 - STAKE TO FIRST BRANCHES AS NECESSARY FOR FIRM SUPPORT
 - STAKING WIRE SHALL NOT TOUCH OR RUB ADJACENT TRUNKS OR BRANCHES
-
- 2-3, 2" X 2" HARDWOOD STAKES DRIVEN FIRMLY A MINIMUM OF 24" INTO THE SUBGRADE PRIOR TO BACKFILLING
 - 2-STRAND 12-GAUGE GALV. WIRE TWISTED AND ENCASED IN RUBBER HOSE 6-9" FROM TOP OF STAKE 2 WIRE SUPPORTS SHALL BE USED ON MAIN STRUCTURAL BRANCHES
 - SPECIFIED PLANTING MIX WATER & TAMP TO REMOVE AIR POCKETS
 - NOTE: STAKING AND WRAPPING AS REQUIRED

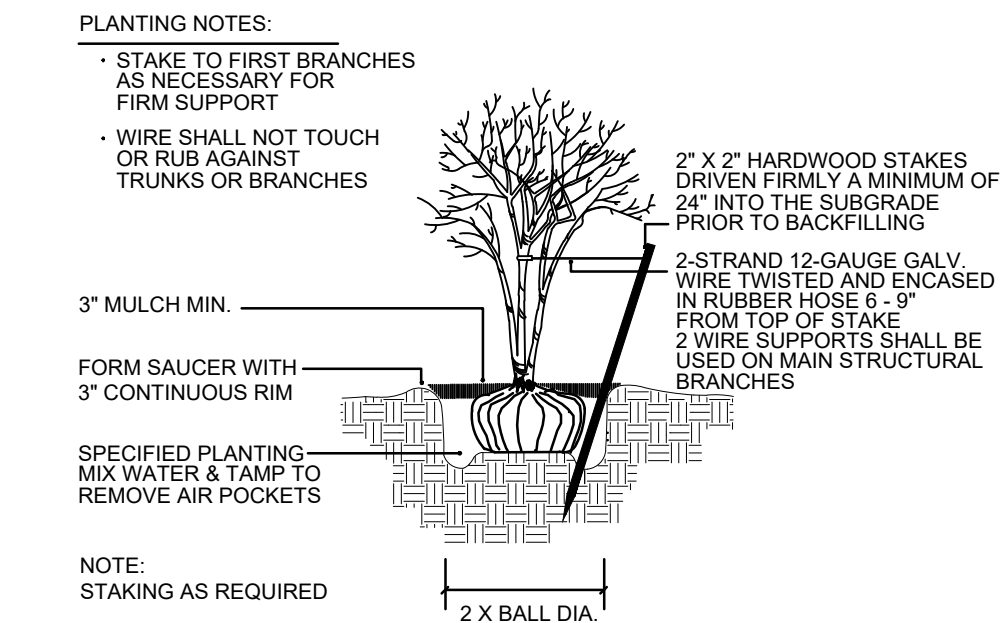
TREE PLANTING & STAKING

NOT TO SCALE



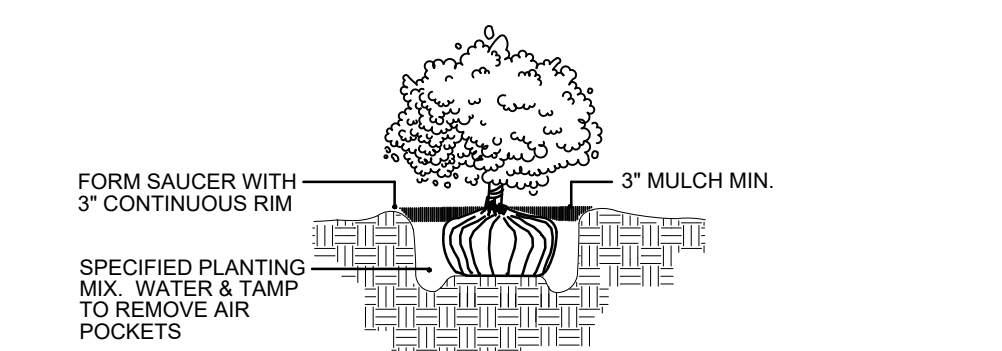
EVERGREEN TREE PLANTING

NOT TO SCALE



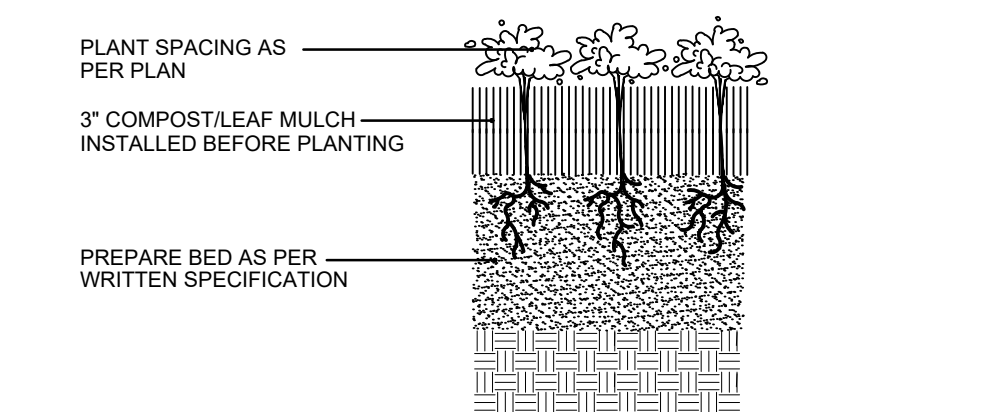
MULTI-TRUNK TREE STAKING

NOT TO SCALE



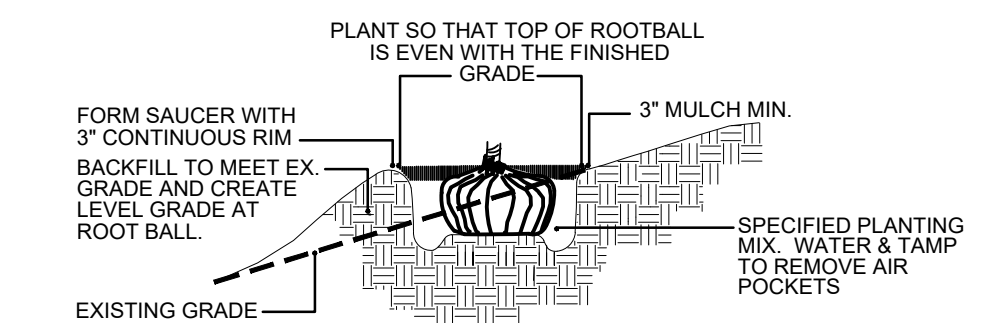
SHRUB PLANTING

NOT TO SCALE



PERENNIAL PLANTING

NOT TO SCALE



HILLSIDE PLANTING

NOT TO SCALE

NOTES: GENERAL LANDSCAPE

- CONTRACTOR SHALL OBTAIN ALL NECESSARY PERMITS REQUIRED. ALL CONSTRUCTION SHALL CONFORM TO APPLICABLE STANDARDS AND CODES.
- CALL J.U.L.I.E. UTILITY LOCATING SERVICE (TEL. 800.892.0123), 48 HOURS PRIOR TO THE START OF ANY DIGGING.
- GENERAL PLANT NOTES:
 - ALL PLANT MATERIAL SHALL CONFORM IN SIZE AND GRADE IN ACCORDANCE WITH AMERICAN STANDARD FOR NURSERY STOCK.
 - ALL PLANT MATERIAL SHALL BE MAINTAINED ALIVE, HEALTHY, AND FREE FROM DISEASE AND PESTS.
 - ALL NEW PLANT MATERIAL SHALL BE FROM A LOCAL SOURCE WHENEVER POSSIBLE (LESS THAN 50 MILES).
 - PLANTS SHALL BE ALLOWED TO GROW IN THEIR NATURAL FORM / HABIT. PLANTS SHALL NOT BE PRUNED/HEDGED UNLESS ABSOLUTELY NECESSARY (DUE TO VISIBILITY OR HAZARD OBSTRUCTION).
 - ALL LANDSCAPED AREAS SHALL BE FREE OF WEEDS, LITTER, AND SIMILAR SIGNS OF DEFERRED MAINTENANCE.
- LOCATIONS OF PROPOSED PLANT MATERIAL MAY BE ADJUSTED AT TIME OF INSTALLATION DUE TO FINAL ENGINEERING AND FINAL LOCATION OF SITE UTILITIES.
- THE LANDSCAPE CONTRACTOR IS RESPONSIBLE FOR PROVIDING AND SPREADING TOPSOIL (6"-12" DEEP), FINE GRADINGS, AND PREPARATION OF ALL LAWN AND LANDSCAPE AREAS. ALL SOILS SHALL BE FREE OF CONSTRUCTION DEBRIS, PRIOR TO INSTALLING ANY PLANT MATERIAL.
- PRIOR TO SPREADING TOPSOIL, THE LANDSCAPE CONTRACTOR SHALL INSPECT AND ACCEPT ALL BASE GRADES. ANY DEVIATION FROM GRADES INDICATED ON THE GRADING PLAN SHALL BE CORRECTED BEFORE PLACING ANY TOPSOIL.
- ALL SHRUB, GROUND COVER, PERENNIAL, AND ANNUAL PLANTING BEDS SHALL BE PREPARED WITH A SOIL AMENDMENT MIX - 1/3 TOPSOIL, 1/3 MUSHROOM COMPOST, AND 1/3 TORPEDO SAND. MATERIAL SHALL BE ROTO-TILLED JUST PRIOR TO THE INSTALLATION OF PLANT MATERIAL.
- ALL PLANTING ISLANDS SHALL BE MOUNDED TO PROVIDE POSITIVE DRAINAGE.
- ALL PLANTING BEDS ADJACENT TO LAWN AREAS SHALL HAVE A SPADED EDGE BORDER, UNLESS METAL OR OTHER BORDER IS SPECIFIED.
- ALL PLANTING BED AREAS SHALL MAINTAIN A MAX. 3" DEEP LAYER OF SHREDDED HARDWOOD MULCH (COLOR: NON-DYED, BROWN).
- LANDSCAPE CONTRACTOR SHALL COORDINATE PLANTING SCHEDULE WITH LANDSCAPE MAINTENANCE CONTRACTOR, TO ENSURE PROPER WATERING OF PLANTED AND SODDED AREAS AFTER INITIAL INSTALLATION.
- LANDSCAPE CONTRACTOR SHALL COORDINATE WORK WITH OTHER CONTRACTORS ON SITE TO MINIMIZE ANY REDO OF COMPLETED LANDSCAPE WORK AND DAMAGE TO PLANT MATERIAL.
- CONTRACTOR SHALL BE RESPONSIBLE FOR HIS/HER OWN LAYOUT WORK. UPON REQUEST, LANDSCAPE ARCHITECT SHALL BE AVAILABLE TO ASSIST/APPROVE CONTRACTOR LAYOUT.
- EVERY ATTEMPT HAS BEEN MADE TO DEPICT ALL EXISTING UTILITY LINES. CONTRACTOR SHALL USE PRECAUTION WHEN DIGGING. CONTRACTOR SHALL MAKE THEMSELVES THOROUGHLY FAMILIAR WITH ALL UNDERGROUND UTILITY LOCATIONS PRIOR TO ANY DIGGING, VERIFYING LOCATIONS AND DEPTHS OF ALL UTILITIES.
- IT IS THE LANDSCAPE CONTRACTOR'S RESPONSIBILITY TO VISIT THE SITE PRIOR TO BID SUBMITTAL, TO BECOME FAMILIAR WITH EXISTING CONDITIONS AT THE SITE.
- PLANT LIST QUANTITIES PROVIDED AT TIME OF FINAL PLANS ARE APPROXIMATIONS. CONTRACTORS ARE RESPONSIBLE FOR COMPLETING THEIR OWN QUANTITY TAKE-OFFS. IF A DISCREPANCY IS FOUND BETWEEN THE PLAN AND THE PLANT LIST, THEN THE PLAN SHALL PREVAIL.
- PLANT SUBSTITUTIONS ARE ALLOWED DUE TO PLANT AVAILABILITY OR PLANTING TIME OF YEAR, ONLY WITH THE PRIOR CONSENT OF THE LANDSCAPE ARCHITECT. IF SUBSTITUTIONS ARE MADE WITHOUT PRIOR CONSENT, THE LANDSCAPE ARCHITECT MAINTAINS THE RIGHT TO REJECT MATERIAL IN THE FIELD, AT THE COST TO THE CONTRACTOR.
- CONTRACTOR TO PROVIDE TEST OF EXISTING AND IMPORTED SOILS PER SPECIFICATIONS. PLANTING SOIL SHALL BE AMENDED PER SPECIFICATIONS.
- CONTRACTOR SHALL NOTIFY LANDSCAPE ARCHITECT IF AREAS OF POOR DRAINAGE OR OTHER UNUSUAL SUBSURFACE CONDITIONS ARE ENCOUNTERED DURING EXCAVATION FOR PLANTING PITS.
- ALL TURF SHALL BE KENTUCKY BLUEGRASS BLEND SOD (MINERAL, NOT PEAT), PER VILLAGE, SEED IS NOT ALLOWED.
- CONTRACTOR SHALL RESTORE LAWN AREAS THAT HAVE REMAINED PARTIALLY INTACT, TOP DRESSING WITH SOIL, SCARIFYING, AND SEEDING TO FORM A SMOOTH, FULL, EVEN LAWN, FREE OF BARE SPOTS, INDENTATIONS, AND WEEDS.
- LANDSCAPE DETAILS SHOWN ARE FOR DESIGN INTENT ONLY. LANDSCAPE ARCHITECT ASSUMES NO LIABILITY. CONTRACTOR IS RESPONSIBLE FOR ERECTING AND INSTALLING PROPERLY BUILT AMENITIES PER CODE, PER SITE CONDITIONS (FINAL GRADING & UTILITY LOCATIONS), AND PER AREA CLIMATE CONDITIONS. ALL LANDSCAPE SITE DETAILS FOR STRUCTURES AND FOOTINGS SHALL BE REVIEWED & APPROVED BY A STRUCTURAL ENGINEER.
- CONTRACTOR INSTALLATION BIDS SHALL INCLUDE A ONE-YEAR WARRANTY ON ALL PLANT MATERIAL.

NOTES: PER DEPARTMENT OF PUBLIC UTILITIES-ELECTRIC

- CLEARANCE TO TRANSFORMER PAD SHALL BE 5' FROM ALL SIDES, 10' FROM FRONT, AND THE AREA ABOVE MUST BE COMPLETELY CLEAR OF OBSTRUCTION. NO TREES, SHRUBS, OR OTHER OBSTACLES WILL BE ALLOWED WITHIN THIS AREA. TRANSFORMER PAD SHALL MAINTAIN MINIMUM CLEARANCE OF 20' FROM EGREE POINTS. PER DPUE SPECIFICATIONS C10-2130 AND C30-0016.
- AT ALL TIMES, THE CUSTOMER SHALL BE SOLELY RESPONSIBLE FOR MAINTAINING A SUITABLE APPROACH TO THE METER LOCATION, WITH NO OBSTRUCTIONS WITHIN FOUR (4) FEET OF THE FRONT AND TWO (2) FEET OF THE SIDES OF THE METER. PER NAPERVILLE SERVICE RULES AND POLICIES 22.2F.

NOTES: PER DEPARTMENT OF PUBLIC UTILITIES-WATER/WASTEWATER

- WHERE POSSIBLE, TREES SHOULD BE SET A MINIMUM OF FIVE (5) FEET HORIZONTALLY FROM MAINS AND SERVICES.
- TREES SHOULD BE SET A MINIMUM OF TEN (10) FEET HORIZONTALLY FROM MANHOLES, VALVE VAULTS, SERVICE BOXES, AND FIRE HYDRANTS.
- ENSURE MONUMENT SIGNS, FENCING, AND WALLS ARE SET OUTSIDE PUEDES AND ARE AT LEAST TEN (10) FEET FROM WATER AND SANITARY INFRASTRUCTURE.



dickson design
STUDIO
9 CRYSTAL LAKE ROAD
SUITE 110
LAKE IN THE HILLS, IL 60156
(224) 241-8181

CLIENT NAME AND ADDRESS

KRAMER HOMES

NAPERVILLE, ILLINOIS

PLAN DATE

JULY 30, 2025

REVISIONS

1.	10/03/25 PER CITY COMMENTS
2.	10/08/25 MONUMENT LOCATION
3.	11/06/25 PER CITY COMMENTS
4.	01/09/26 PER CITY COMMENTS (ADDED PARKWAY TREE ON SPRING)
5.	01/26/26 PER CLIENT DIRECTION BASED ON NEIGHBOR INPUT
6.	01/27/26 PER SITE PLAN (PARKING ADDED ON SPRING)
7.	04/21/26 PER NEW SITE PLAN
8.	05/26/26 PER CITY COMMENTS
9.	
10.	

PROJECT NAME AND SHEET TITLE

OSTARA ROW HOMES
NAPERVILLE, IL

PRELIMINARY LANDSCAPE PLAN

- NOTES & DETAILS

SHEET NUMBER

LO.2



dickson design
STUDIO
9 CRYSTAL LAKE ROAD
SUITE 110
LAKE IN THE HILLS, IL 60156
(224) 241-8181

CLIENT NAME AND ADDRESS

KRAMER HOMES

NAPERVILLE, ILLINOIS

PLAN DATE

JULY 30, 2025

REVISIONS

1.	10/03/25 PER CITY COMMENTS
2.	10/08/25 MONUMENT LOCATION
3.	11/06/25 PER CITY COMMENTS
4.	01/09/26 PER CITY COMMENTS (ADDED PARKWAY TREE ON SPRING)
5.	01/26/26 PER CLIENT DIRECTION BASED ON NEIGHBOR INPUT
6.	01/27/26 PER SITE PLAN (PARKING ADDED ON SPRING)
7.	04/21/26 PER NEW SITE PLAN
8.	05/26/26 PER CITY COMMENTS
9.	
10.	

PROJECT NAME AND SHEET TITLE

OSTARA ROW HOMES
NAPERVILLE, IL

PRELIMINARY LANDSCAPE PLAN

- TREE PRES & REMOVAL

SHEET NUMBER

L1.1



NORTH

EXISTING & PROPOSED CONDITIONS: PROPOSED TREE PRESERVATION & REMOVAL PLAN

SCALE: 1" = 20'-0"



TREE INVENTORY - ONSITE

Tree Tag #	Common Name	Botanic Name	DBH	Condition	Outcome
5	Callery pear	<i>Pyrus calleryana</i>	25.4	fair	Removed
6	Callery pear	<i>Pyrus calleryana</i>	9.3	fair	Removed
7	Callery pear	<i>Pyrus calleryana</i>	6.9	fair	Removed
8	Callery pear	<i>Pyrus calleryana</i>	27.0	fair	Removed
9	Black walnut	<i>Juglans nigra</i>	19.4	poor	Removed
10	Norway maple	<i>Acer plantanoides</i>	30.2	fair	Removed
11	Black walnut	<i>Juglans nigra</i>	12.5	fair	Removed
12	Boxelder	<i>Acer negundo</i>	23.4	fair	Removed
13	Black walnut	<i>Juglans nigra</i>	28.6	fair	Preserved*
14	Northern hackberry	<i>Celtis occidentalis</i>	4.5	fair	Preserved*
19	Siberian elm	<i>Ulmus pumila</i>	12.7	fair	Removed
20	Northern hackberry	<i>Celtis occidentalis</i>	12.9	fair	Removed
21	American elm	<i>Ulmus americana</i>	6.8	fair	Removed
22	American elm	<i>Ulmus americana</i>	8.0	fair	Removed
23	Northern hackberry	<i>Celtis occidentalis</i>	10.1	fair	Removed
24	American elm	<i>Ulmus americana</i>	13.5	fair	Removed
25	Black walnut	<i>Juglans nigra</i>	32.7	fair	Removed
26	Northern hackberry	<i>Celtis occidentalis</i>	4.6	fair	Removed
27	White mulberry	<i>Morus alba</i>	9.7	fair	Removed
28	Northern hackberry	<i>Celtis occidentalis</i>	13.2	fair	Removed
29	American elm	<i>Ulmus americana</i>	21.1	fair	Removed
30	Siberian elm	<i>Ulmus pumila</i>	10.1	fair	Removed
31	sugar maple	<i>Acer saccharum</i>	6.5	fair	Removed
32	White mulberry	<i>Morus alba</i>	23.8	fair	Removed
33	Black walnut	<i>Juglans nigra</i>	13.1	fair	Removed
34	American elm	<i>Ulmus americana</i>	9.4	fair	Removed
35	Siberian elm	<i>Ulmus pumila</i>	9.2	fair	Removed
36	apple spp.	<i>Malus spp.</i>	5.8	fair	Removed
37	cherry spp.	<i>Prunus spp.</i>	8.9	poor	Removed

* Trees shall be preserved to the greatest extent practical based on final engineering.

TREE INVENTORY - PARKWAY

Tree Tag #	Common Name	Botanic Name	DBH	Condition	Outcome
1	Blue spruce	<i>Picea pungens</i>	17.6	fair	Removed
2	Norway maple	<i>Acer plantanoides</i>	17.7	fair	Preserved
3	Norway maple	<i>Acer plantanoides</i>	20.0	fair	Preserved
4	Kentucky coffeetree	<i>Gymnocladus dioica</i>	4.9	fair	Preserved

TREE INVENTORY - OFFSITE

Tree Tag #	Common Name	Botanic Name	DBH	Condition	Outcome
15	Northern hackberry	<i>Celtis occidentalis</i>	5.7	fair	Preserved
16	Black walnut	<i>Juglans nigra</i>	5.5	fair	Preserved
17	Black walnut	<i>Juglans nigra</i>	5.6	fair	Preserved
18	Black walnut	<i>Juglans nigra</i>	12.8	fair	Preserved
38	Black walnut	<i>Juglans nigra</i>	4.6	fair	Preserve
39	Boxelder	<i>Acer negundo</i>	15.8	poor	Preserve
40	American elm	<i>Ulmus americana</i>	5.4	fair	Preserve
41	Tree of heaven	<i>Ailanthus altissima</i>	4.5	dead	Preserve
42	Callery pear	<i>Pyrus calleryana</i>	5.0	fair	Preserve
43	Northern hackberry	<i>Celtis occidentalis</i>	4.6	fair	Preserve
44	Tree of heaven	<i>Ailanthus altissima</i>	4.9	fair	Preserve
45	Boxelder	<i>Acer negundo</i>	4.2	dead	Preserve
46	Boxelder	<i>Acer negundo</i>	5.3	poor	Preserve
47	Black walnut	<i>Juglans nigra</i>	5.2	good	Preserve
48	Northern hackberry	<i>Celtis occidentalis</i>	4.2	fair	Preserve
49	Boxelder	<i>Acer negundo</i>	4.0	dead	Preserve
50	Northern hackberry	<i>Celtis occidentalis</i>	4.9	fair	Preserve
51	Boxelder	<i>Acer negundo</i>	20.5	poor	Preserve
52	Eastern red cedar	<i>Juniperus virginiana</i>	4.4	fair	Preserve
53	White mulberry	<i>Morus alba</i>	4.0	fair	Preserve
54	American elm	<i>Ulmus americana</i>	13.8	fair	Preserve
55	White mulberry	<i>Morus alba</i>	8.9	poor	Preserve
56	Boxelder	<i>Acer negundo</i>	5.0	fair	Preserve
57	Siberian elm	<i>Ulmus pumila</i>	18.7	fair	Preserve
58	Northern hackberry	<i>Celtis occidentalis</i>	4.0	fair	Preserve
59	Black walnut	<i>Juglans nigra</i>	4.1	fair	Preserve
60	Black walnut	<i>Juglans nigra</i>	10.1	fair	Preserve
61	Boxelder	<i>Acer negundo</i>	9.7	fair	Preserve
62	Eastern cottonwood	<i>Populus deltoides</i>	43.2	fair	Preserve
63	Eastern cottonwood	<i>Populus deltoides</i>	8.0	poor	Preserve
64	American elm	<i>Ulmus americana</i>	12.4	fair	Preserve
65	Northern hackberry	<i>Celtis occidentalis</i>	4.0	fair	Preserve
66	Northern hackberry	<i>Celtis occidentalis</i>	4.2	fair	Preserve
67	Black walnut	<i>Juglans nigra</i>	23.1	fair	Preserve
68	Black walnut	<i>Juglans nigra</i>	14.2	fair	Preserve
69	Northern hackberry	<i>Celtis occidentalis</i>	5.5	fair	Preserve
70	Eastern red cedar	<i>Juniperus virginiana</i>	4.2	fair	Preserve
71	Tree of heaven	<i>Ailanthus altissima</i>	4.2	good	Preserve
72	Boxelder	<i>Acer negundo</i>	23.9	fair	Preserve
73	Eastern cottonwood	<i>Populus deltoides</i>	33.3	fair	Preserve
74	American elm	<i>Ulmus americana</i>	12.2	fair	Preserve
75	White mulberry	<i>Morus alba</i>	14.8	fair	Preserve
76	American elm	<i>Ulmus americana</i>	9.9	fair	Preserve
77	Norway maple	<i>Acer plantanoides</i>	9.7	fair	Preserve
78	Siberian elm	<i>Ulmus pumila</i>	11.0	fair	Preserve
79	American elm	<i>Ulmus americana</i>	6.2	fair	Preserve
80	American elm	<i>Ulmus americana</i>	10.2	dead	Preserve
81	Eastern cottonwood	<i>Populus deltoides</i>	19.0	fair	Preserve
82	Eastern cottonwood	<i>Populus deltoides</i>	14.2	fair	Preserve
83	American elm	<i>Ulmus americana</i>	5.8	fair	Preserve
84	American elm	<i>Ulmus americana</i>	4.1	fair	Preserve
85	American elm	<i>Ulmus americana</i>	4.0	fair	Preserve
86	Siberian elm	<i>Ulmus pumila</i>	8.9	fair	Preserve
87	Siberian elm	<i>Ulmus pumila</i>	4.2	poor	Preserve
88	Siberian elm	<i>Ulmus pumila</i>	5.2	fair	Preserve
89	Siberian elm	<i>Ulmus pumila</i>	4.1	fair	Preserve
90	American elm	<i>Ulmus americana</i>	5.3	fair	Preserve
91	Siberian elm	<i>Ulmus pumila</i>	7.2	fair	Preserve
92	American elm	<i>Ulmus americana</i>	4.0	fair	Preserve
93	American elm	<i>Ulmus americana</i>	6.6	fair	Preserve
94	American elm	<i>Ulmus americana</i>	6.4	fair	Preserve
95	Siberian elm	<i>Ulmus pumila</i>	4.7	fair	Preserve
96	American elm	<i>Ulmus americana</i>	8.2	fair	Preserve
97	American elm	<i>Ulmus americana</i>	8.0	fair	Preserve
98	White mulberry	<i>Morus alba</i>	5.7	fair	Preserve
99	Siberian elm	<i>Ulmus pumila</i>	24.5	fair	Preserve
100	American elm	<i>Ulmus americana</i>	5.1	fair	Preserve

RATING SCALE: TREE CONDITION / FORM

Excellent / "1"

The tree is typical of the species, has less than 10% deadwood in the crown that is attributable to normal causes, has no other observed problems, and required no remedial action.

Good / "2"

The tree is typical of the species and/or has less than 20% deadwood in the crown, only one or two minor problems that are easily corrected with normal care.

Fair / "3"

The tree is typical of the species and/or has less than 30% deadwood in the crown, one or two minor problems that are not eminently lethal to the tree, and no significant decay or structural problems, but the tree must have remedial care above normal care in order to minimize the impact of future stress and to insure continued health.

Poor / "4"

The tree is not typical of the species and/or has significant problems such as 30-50% deadwood in the crown, serious decay or structural defect, insects, disease or other problems that can be eminently lethal to the tree or create a hazardous tree if not corrected in a short period of time or if the tree is subjected to additional stress.

Critical / "5"

The tree is not typical of the species and/or has over 50% deadwood in the crown, major decay or structural problems, is hazardous or is severely infested with insects, disease, or other problems that even if aggressively corrected would not result in the long term survival of the tree.

Dead / "6"

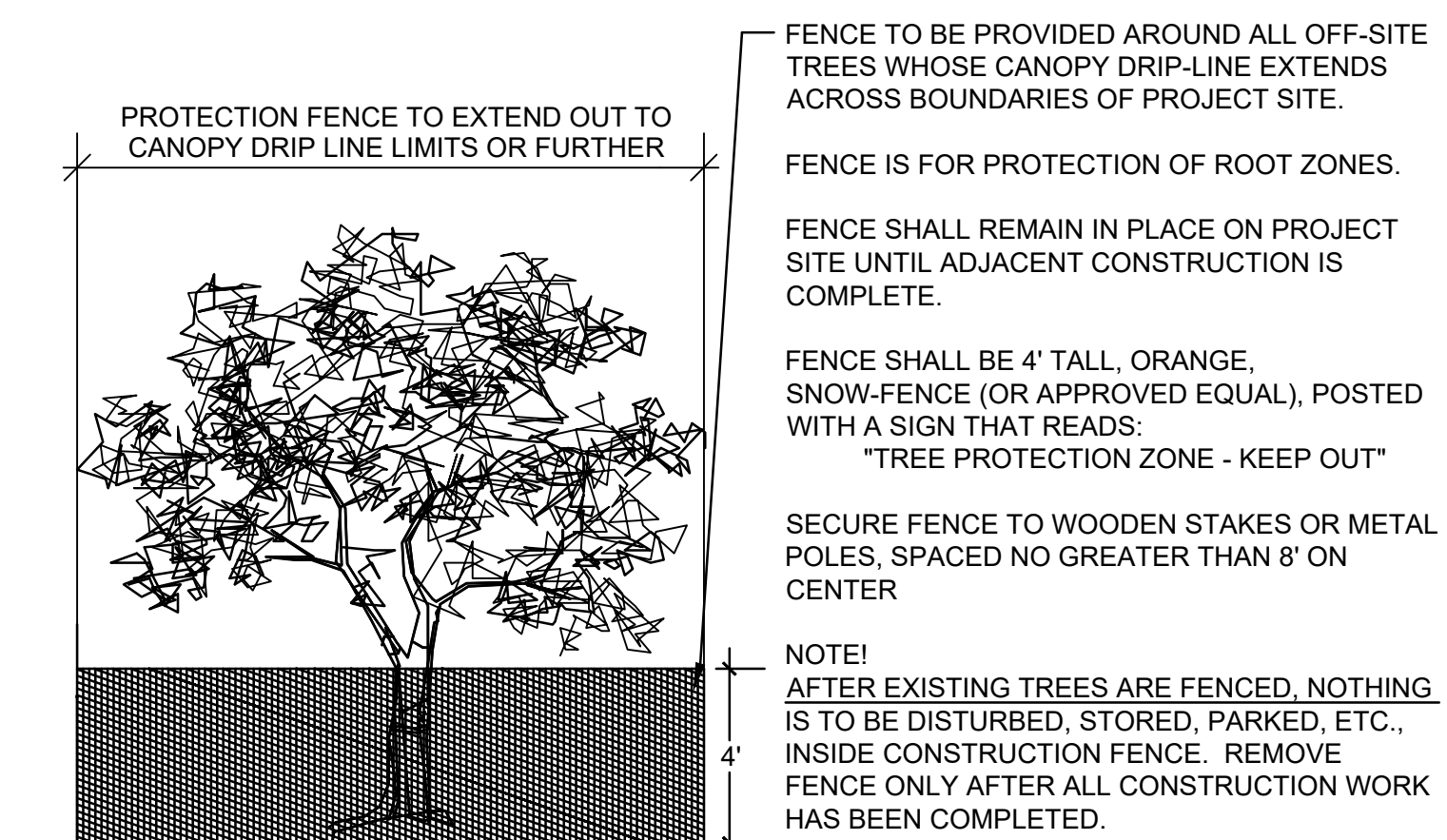
Less than 10% of the tree shows signs of life.

NOTES: TREE PRESERVATION

1. TREE PRESERVATION:

- ALL WORK MUST BE PERFORMED ACCORDING TO THE APPROVED TREE PRESERVATION PLAN. IT IS STRONGLY RECOMMENDED TO DOCUMENT GOOD STEWARDSHIP PRACTICES DURING CONSTRUCTION. IF REQUIRED, PRIOR TO COMMENCING ANY DEMOLITION / CONSTRUCTION ACTIVITY, NOTIFY MUNICIPAL FORESTRY DEPARTMENT (NOTIFY AT LEAST 48 HOURS IN ADVANCE OF WORK).**
- AN APPROVED TREE PRESERVATION PLAN MUST BE AVAILABLE AT THE BUILDING SITE.
- PRIOR TO ANY DEMOLITION / CONSTRUCTION ACTIVITY, INSTALL TREE PRESERVATION FENCE AND PERFORM ROOT PRUNING FOR ALL PROTECTED TREES.
- FENCE THE CRITICAL ROOT ZONE (CRZ) / CANOPY DRIP-LINE, OF THE ENTIRE EXISTING TREE TO BE PRESERVED, WITH TREE PROTECTION FENCE. FENCE TO PREVENT WOUNDS TO THE TREE & SOIL COMPACTION. POST THE FENCE WITH A SIGN STATING, "TREE PROTECTION ZONE - KEEP OUT".
- ALL REQUIRED TREE PROTECTION FENCING SHALL REMAIN IN PLACE UNTIL THE TIME OF FINISH GRADING AND LANDSCAPING.
- NO TRENCHING SHOULD BE DONE WITHIN THE TREE PROTECTION ZONES FOR ANY CONSTRUCTION ACTIVITY, UNLESS PRE-APPROVED BY PROJECT ARBORIST &/OR PROJECT LANDSCAPE ARCHITECT.
- NO GRADE CHANGES SHOULD BE DONE WITHIN THE TREE PROTECTION ZONES OF TREES FOR ANY CONSTRUCTION ACTIVITY.
- SHOULD IT BE NECESSARY TO TRENCH WITHIN THE CRZ FOR UTILITIES, INCLUDING DISCONNECTION OR CAPPING OF EXISTING UTILITIES, ALL TRENCHES SHALL BE HAND DUG. NO ROOTS LARGER THAN TWO INCHES (2") SHALL BE CUT, UNLESS NO OTHER ALTERNATIVE IS FEASIBLE. ALL SMALLER ROOTS THAT REQUIRE CUTTING, SHALL BE CUT WITH A SHARP PRUNING SAW. CUTS SHALL BE MADE FLUSH WITH THE SIDE OF THE TRENCH. IF AT ANY TIME, TWENTY-FIVE PERCENT (25%) OF THE AREA WITHIN THE CRZ IS BEING SEPARATED FROM THE TREE BY A TRENCH, THEN THE LINE SHALL BE EITHER RELOCATED OR INSTALLED USING TRENCH-LESS METHODS.
- LOCATE THE PROPOSED WATER AND SEWER LINES OUTSIDE OF THE TREE PROTECTION ZONE OR INSTALL THE SEWER AND WATER UTILITIES USING TRENCH-LESS METHODS. AUGER THROUGH THE ENTIRE TREE PROTECTION ZONE, LOCATE PITS OUTSIDE OF THE TREE PROTECTION ZONE.
- THE PROPOSED WATER SERVICE LINE VALVES (B-BOXES), ARE TO BE TEN FEET (10') FROM PRESERVED TREES. IF FUTURE UTILITY EXCAVATIONS NEED TO OCCUR, THIS REDUCES THE CHANCES OF EXTENSIVE STEM OR ROOT DAMAGE, WHICH COULD LEAD TO TREE DECLINE.
- AT NO TIME SHALL ANY EQUIPMENT, MATERIALS, SUPPLIES OR FILL SOIL BE ALLOWED IN THE TREE PROTECTION ZONE(S). DO NOT STORE EXCAVATED SOIL OR THE DUMPSTER WITHIN THE DRIP-LINE (CRZ) OF THE PRESERVED TREE(S).
- REMOVAL OF ANY HARDSCAPE WITHIN THE TREE PROTECTION ZONES WILL BE DONE BY HAND.** NO ROOTS LARGER THAN TWO INCHES (2") SHALL BE CUT, UNLESS THERE IS NO ALTERNATIVE FEASIBLE. CUTS WILL BE MADE WITH A SHARP PRUNING SAW TO AVOID TEARING AND WILL BE FLUSH WITH THE TREE SIDE OF THE TRENCH.
- THE TREE PROTECTION ZONE MAY BE MULCHED TO IMPROVE THE GROWING CONDITIONS FOR TREE ROOTS AND TO MINIMIZE MAINTENANCE OF THE LAWN.
- ALL OFF-SITE TREES SHALL BE PRESERVED.
- EXISTING TREES SHOWN TO REMAIN SHALL BE PRESERVED TO THE BEST EXTENT POSSIBLE, PENDING FINAL SITE PLAN, FINAL CIVIL ENGINEERING, AND/OR ANY UNFORESEEN ISSUES.

DETAIL: TREE PROTECTION FENCE



dickson design
STUDIO

9 CRYSTAL LAKE ROAD
SUITE 110
LAKE IN THE HILLS, IL 60156
(224) 241-8181

CLIENT NAME AND ADDRESS

KRAMER HOMES

NAPERVILLE, ILLINOIS

PLAN DATE

JULY 30, 2025

REVISIONS

1.	10/03/25 PER CITY COMMENTS
2.	10/08/25 MONUMENT LOCATION
3.	11/06/25 PER CITY COMMENTS
4.	01/09/26 PER CITY COMMENTS (ADDED PARKWAY TREE ON SPRING)
5.	01/26/26 PER CLIENT DIRECTION BASED ON NEIGHBOR INPUT
6.	01/27/26 PER SITE PLAN (PARKING ADDED ON SPRING)
7.	04/21/26 PER NEW SITE PLAN
8.	05/26/26 PER CITY COMMENTS
9.	
10.	

PROJECT NAME AND SHEET TITLE

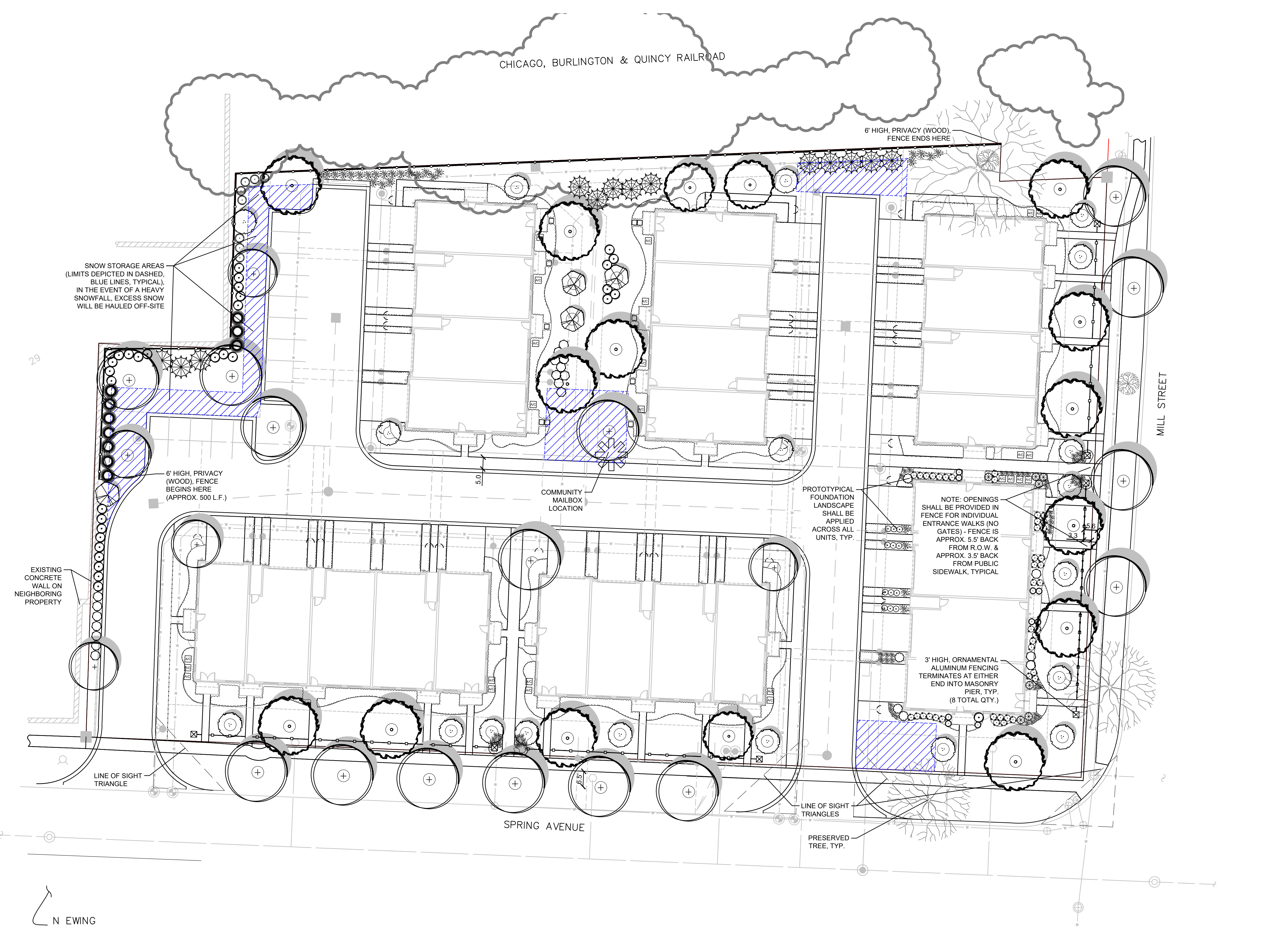
OSTARA ROW HOMES
NAPERVILLE, IL

PRELIMINARY LANDSCAPE PLAN

- TREE INVENTORY & NOTES

SHEET NUMBER

L1.2



SNOW STORAGE AREAS
(LIMITS DEPICTED IN DASHED,
BLUE LINES, TYPICAL).
IN THE EVENT OF A HEAVY
SNOWFALL, EXCESS SNOW
WILL BE HAULED OFF-SITE

6' HIGH, PRIVACY
(WOOD), FENCE
BEGINS HERE
(APPROX. 500 L.F.)

EXISTING
CONCRETE
WALL ON
NEIGHBORING
PROPERTY

LINE OF SIGHT
TRIANGLE

SPRING AVENUE

CHICAGO, BURLINGTON & QUINCY RAILROAD

6' HIGH, PRIVACY (WOOD),
FENCE ENDS HERE

MILL STREET

COMMUNITY
MAILBOX
LOCATION

PROTOTYPICAL
FOUNDATION
LANDSCAPE
SHALL BE
APPLIED
ACROSS ALL
UNITS, TYP.

NOTE: OPENINGS
SHALL BE PROVIDED IN
FENCE FOR INDIVIDUAL
ENTRANCE WALKS (NO
GATES) - FENCE IS
APPROX. 5.5' BACK
FROM R.O.W. &
APPROX. 3.5' BACK
FROM PUBLIC
SIDEWALK, TYPICAL

3' HIGH, ORNAMENTAL
ALUMINUM FENCING
TERMINATES AT EITHER
END INTO MASONRY
PIER, TYP.
(8 TOTAL QTY.)

LINE OF SIGHT
TRIANGLES

PRESERVED
TREE, TYP.

N EWING
STREET

NOTE!
Final locations of plantings may be adjusted as determined by Final Engineering.

PROPOSED LANDSCAPE PLAN
SCALE: 1" = 20'-0"

0 10' 20' 40'



dickson design
STUDIO
9 CRYSTAL LAKE ROAD
SUITE 110
LAKE IN THE HILLS, IL 60156
(224) 241-8181

CLIENT NAME AND ADDRESS

KRAMER HOMES

NAPERVILLE, ILLINOIS

PLAN DATE

JULY 30, 2025

REVISIONS

1.	10/03/25 PER CITY COMMENTS
2.	10/08/25 MONUMENT LOCATION
3.	11/06/25 PER CITY COMMENTS
4.	01/09/26 PER CITY COMMENTS (ADDED PARKWAY TREE ON SPRING)
5.	01/26/26 PER CLIENT DIRECTION BASED ON NEIGHBOR INPUT
6.	01/27/26 PER SITE PLAN (PARKING ADDED ON SPRING)
7.	04/21/26 PER NEW SITE PLAN
8.	05/26/26 PER CITY COMMENTS
9.	
10.	

PROJECT NAME AND SHEET TITLE

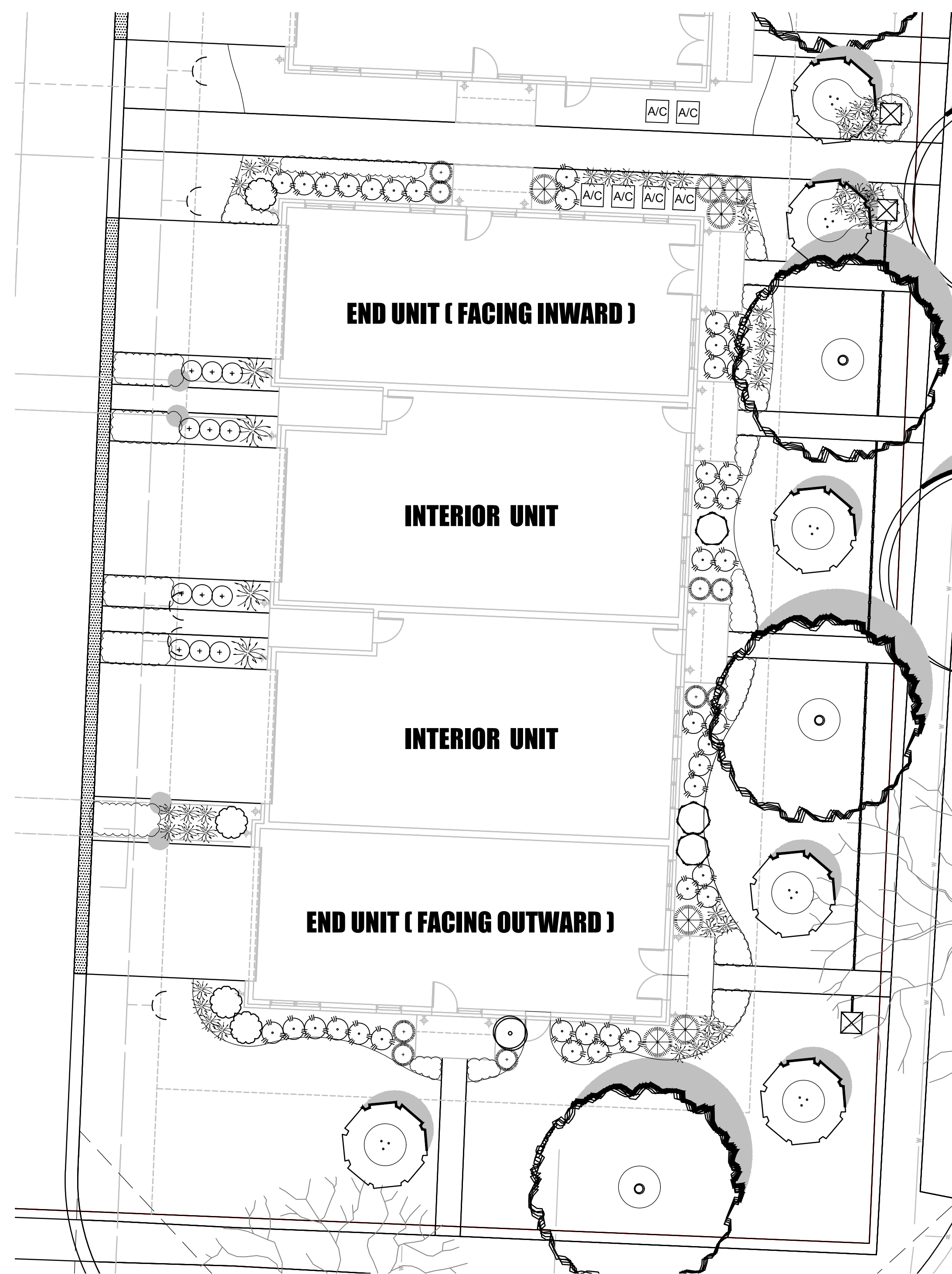
OSTARA ROW HOMES
NAPERVILLE, IL

PRELIMINARY LANDSCAPE PLAN

- OVERALL

SHEET NUMBER

L2.0

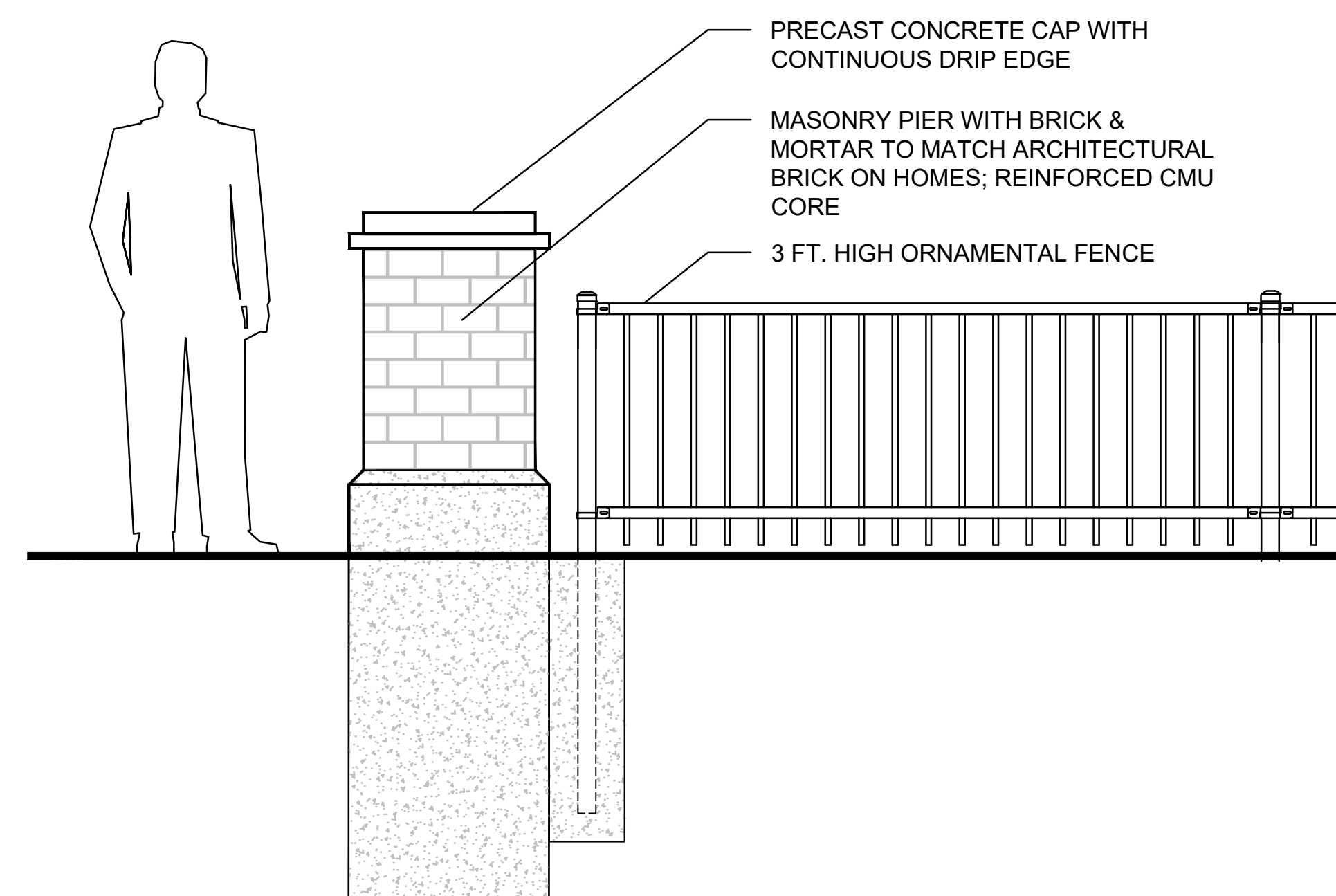


DETAIL: LANDSCAPE PLAN FOR PROTOTYPICAL FOUNDATIONS

SCALE: 1" = 10'-0"

NOTE! PROTOTYPICAL FOUNDATION LANDSCAPE TO BE REPLICATED ACROSS ALL UNITS. PLANTS SHALL BE ADJUSTED BASED ON INDIVIDUAL BUILDINGS AND AC LOCATIONS. AIR CONDITIONER CONDENSERS SHALL BE SCREENED.

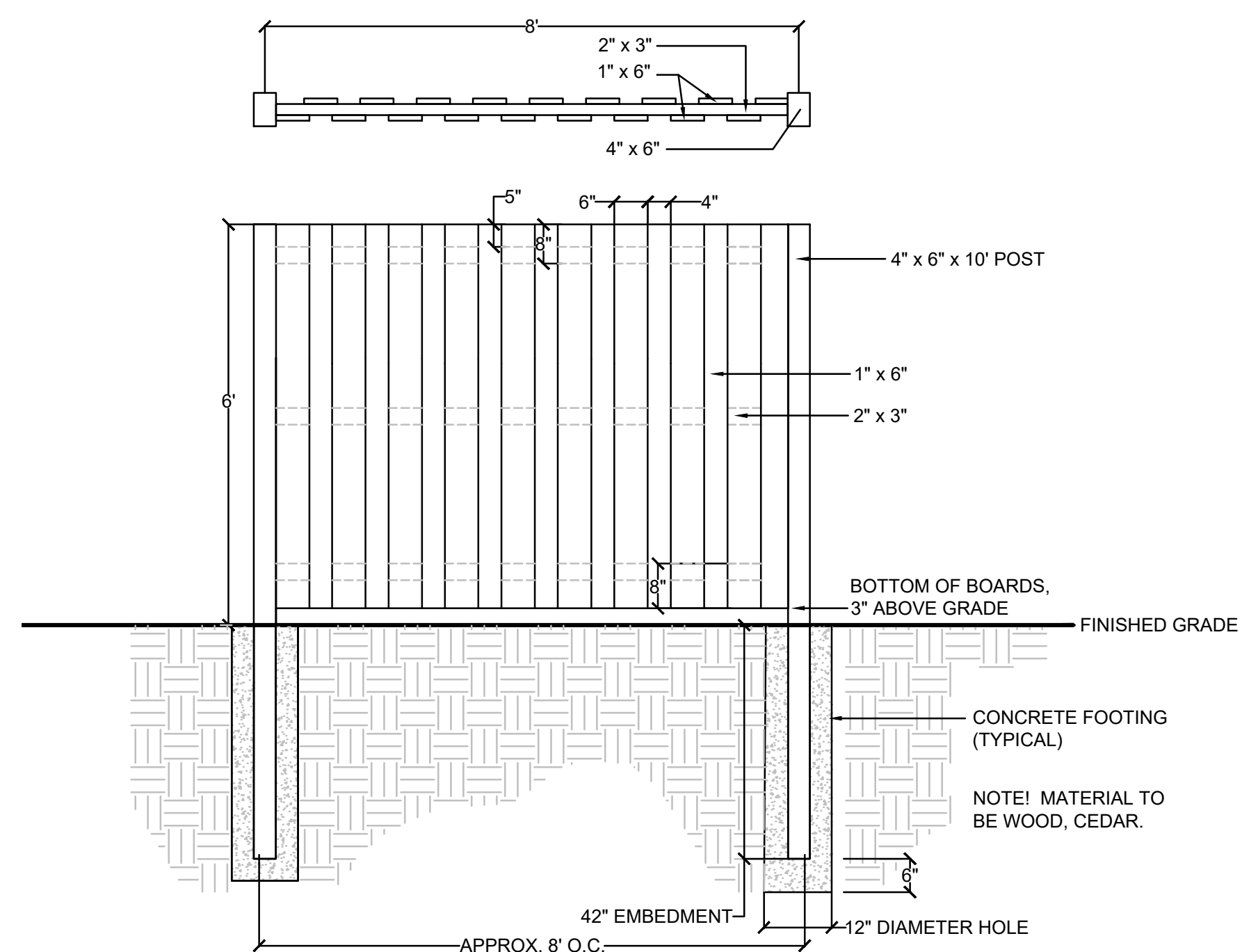
DETAILS: SITE FEATURES



DETAIL: MASONRY PIER & ORNAMENTAL FENCE

NOT TO SCALE

LOCATIONS: ALONG MILL STREET AND SPRING STREET FRONTAGE



DETAIL: PRIVACY FENCE

NOT TO SCALE

LOCATION: ALONG NORTH & NORTHWESTERN BORDER



dickson design
STUDIO

9 CRYSTAL LAKE ROAD
SUITE 110
LAKE IN THE HILLS, IL 60156
(224) 241-8181

CLIENT NAME AND ADDRESS

KRAMER HOMES

NAPERVILLE, ILLINOIS

PLAN DATE

JULY 30, 2025

REVISIONS

1.	10/03/25 PER CITY COMMENTS
2.	10/08/25 MONUMENT LOCATION
3.	11/06/25 PER CITY COMMENTS
4.	01/09/26 PER CITY COMMENTS (ADDED PARKWAY TREE ON SPRING)
5.	01/26/26 PER CLIENT DIRECTION BASED ON NEIGHBOR INPUT
6.	01/27/26 PER SITE PLAN (PARKING ADDED ON SPRING)
7.	04/21/26 PER NEW SITE PLAN
8.	05/26/26 PER CITY COMMENTS
9.	
10.	

PROJECT NAME AND SHEET TITLE

OSTARA ROW HOMES
NAPERVILLE, IL

PRELIMINARY LANDSCAPE PLAN

- FOUNDATIONS & FEATURES

SHEET NUMBER

L3.0