

**ELECTRICAL SPECIFICATIONS**

- ALL WORK SHALL COMPLY WITH THE 2017 NATIONAL ELECTRICAL CODE, 2015 INTERNATIONAL WIRING CODE AND ALL APPLICABLE STATE AND LOCAL ORDINANCES.
- ALL MATERIAL SHALL BE NEW, UNMANGLED AND UNLAMEISHED EXCEPT AS NOTED.
- CONDUIT ALL PERMITS REQUIRED TO DO THIS WORK AND PAY ALL FEES REQUIRED FOR SUCH PERMITS.
- ALL NEW SHALL BE GUARANTEED FOR A PERIOD OF ONE YEAR FROM THE DATE OF OWNER ACCEPTANCE. WORK OR EQUIPMENT FOUND TO BE SUBSTANDARD OR FAULTY SHALL BE CORRECTED DURING THIS PERIOD AT NO COST TO THE OWNER. LAMPS ARE EXCLUDED FROM THIS GUARANTEE.
- SEAL PERIMETER JOINT OF ALL CONCRETE FINISH THROUGH WALLS WITH UL LISTED, SELF-SEALING COMPOUND OF COLOR SELECTED BY THE ARCHITECT.
- ALL WORK SHALL BE DESIGNED TO COMPLY WITHOUT EXCEPTION WITH ALL PROVISIONS OF ARTICLE 220 OF THE 2017 NATIONAL ELECTRICAL CODE.
- PROVIDE TEMPORARY SERVICE AS REQUIRED FOR CONSTRUCTION POWER AND REMOVE SUCH TEMPORARY SERVICE WHEN WORK IS COMPLETED.
- MAKE ALL ARRANGEMENTS WITH LOCAL POWER COMPANY AND DO ALL WORK NECESSARY TO PROVIDE PERMANENT SERVICE TO THE BUILDING.
- SAFETY SWITCHES SHALL BE GENERAL DUTY AS MANUFACTURER AS PANEL BOARDS, ETC.
- PANEL BOARDS (NO LOAD CENTER) SHALL BE SQUARE D OR G.E. OR OUTLER-HAMMER AND BUSSES SHALL BE COPPER ONLY.
- ALL LINES SHALL BE RIGIDLY TIGHTENED UPON THE TYPE UNLESS OTHERWISE INDICATED.
- CONDUIT RUN IN BUILDING SHALL BE CONCEALED IN WALLS OR ABOVE CEILING AND SHALL BE EMT (USE GALVANIZED WHERE EXPOSED). UNDERGROUND FEEDER RUN 3/4" BELOW GRADE CAN BE SCHEDULE 80 PVC WITH GROUND WIRE SIZED IN ACCORDANCE WITH THE 2017 NATIONAL ELECTRICAL CODE.
- ALL WIRE SHALL BE COPPER USING TYPE THHN/THRT UNLESS OTHERWISE INDICATED ON THE PLANS.
- COORDINATE COLOR AND STYLE OF WIRING DEVICES (NUMBER) WITH THE ARCHITECT. SPECIFICATIONS SHOULD BE ON DRAWINGS.
- COORDINATE ALL CONTROL REQUIREMENTS FOR THE HVAC SYSTEMS WITH THE CONTRACTOR. PROVIDE POWER TO A/C CONTROL PANEL WHEN USED) AND EMPTY 3/4" CONDUIT WITH FULL-STRING) FOR CONTROL WIRING.
- COORDINATE LOCATION OF TELEPHONE OUTLETS WITH THE OWNER. PROVIDE 3/4" CONDUIT (W/FULL-STRING) FOR PHONE WIRING.
- PROVIDE SPECIFIED LIGHT FIXTURES WITH FINAL LOCATIONS FOR THE ARCHITECT.
- ALL SWITCHES & 48" AFF & ALL RECEPTACLES & 48" AFF UNLESS OTHERWISE INDICATED.
- COORDINATE ALL ELECTRICAL WORK WITH OTHER TRADES TO AVOID ANY CONFLICTS. ANY CORRECTIONS REQUIRED TO MEET CODE REQUIREMENTS OR CLIENT NOTES/DEPENDENCIES SHALL BE MADE AT NO COST TO THE OWNER.
- ALL DIMERS SHALL BE LUTRON "TOUCH" SERIES SLIDE TYPE OR APPROVED EQUAL.
- ALL ELECTRICAL EQUIPMENT AND INSTALLATIONS SHALL BE OF ROBUST STRENGTH TO WITHSTAND, WITHOUT FAILURE, FORCES ENCOUNTERED IN APPLICABLE SEISMIC CATEGORY.
- PROVIDE A COMPLETE DEVICE COORDINATION STUDY WITH RECOMMENDED UNDERWRITING RATINGS AND SETTINGS FOR ALL ADJUSTABLE TRIP DEVICES. PROVIDE AND FLASH LABELING FOR ALL RECOMMENDATIONS.
- ROUTE A MINIMUM OF 3 PHASE CONDUCTORS, 3 NEUTRALS, AND GROUND IN A SINGLE HOME RUN CONDUIT.
- ALL WIRING SHALL BE RUN CONCEALED WHERE FEASIBLE. CONTRACTOR TO PROVIDE WIRING/SD SYSTEM TO CONCEAL WIRING IN EXPOSED CEILING AREAS. SURF MOUNT SHOWN FOR APPROVAL.
- PROVIDE A GREEN CONTINUOUS INSULATED #14 MIN EQUIPMENT GROUNDING CONDUCTOR TO ALL ELECTRICAL, TELECOMMUNICATIONS, AND SECURITY EQUIPMENT SIZED PER NEC 250.122 AND EMTA.
- ALL 15 AMPERE AND 20 AMPERE NON-LOADING RECEPTACLES IN GUEST ROOMS AND GUEST BATHROOMS SHALL BE TAMPER RESISTANT.
- ELECTRICAL EQUIPMENT INSTALLED IN POOL EQUIPMENT ROOMS TO BE RATED FOR USE IN CORROSIVE ENVIRONMENT.

**SPECIAL OUTLET SCHEDULE**

SYMB.	DESCRIPTION	OUTLET
OA	PTAC OUTLET: 20A, 3P, 30, 250V, NEMA 6-20 RECEPTACLE TO BE INSTALLED WITH SH-86-300 (VERIFY THE MODEL/BRAND NAME WITH FRANCHISE/OB/MS)	
OB	DUPLEX GFI RECEPTACLE: 20A, 3P, 30, 125V, AND 20A, 1P, 120V, SWITCH FOR EXPOSED WITH COVER PLATE. MOUNT IN 2-GANG OUTLET BOX. (VERIFY THE MODEL/BRAND NAME WITH FRANCHISE/OB/MS)	
OC	FITNESS ROOM FLOOR OUTLET: 30A, 3P, 30, 125V, NEMA 5-30 DUPLEX RECEPTACLE MOUNTED IN FLOOR BOX WITH BLACK COVER PLATE AND BLACK CARPET FLANGE. (VERIFY THE MODEL/BRAND NAME WITH FRANCHISE/OB/MS)	
OD	GENERAL FLOOR OUTLET: 20A, 3P, 30, 125V, NEMA 5-20 DUPLEX RECEPTACLE MOUNTED IN A 2-GANG SURFACE MOUNTED OUTLET BOX WITH COVER PLATE AND BLACK CARPET FLANGE. (VERIFY THE MODEL/BRAND NAME WITH FRANCHISE/OB/MS)	
OE	BUFFET OUTLETS (2) 20A, 3P, 30, 125V, NEMA 5-20 DUPLEX RECEPTACLE MOUNTED IN A 2-GANG SURFACE MOUNTED OUTLET BOX WITH COVER PLATE AND BLACK CARPET FLANGE. (VERIFY THE MODEL/BRAND NAME WITH FRANCHISE/OB/MS)	

**SYMBOL LIST**

SYMB.	DESCRIPTION	MOUNTING OR AS INDICATED	SYMB.	DESCRIPTION	MOUNTING OR AS INDICATED
	FLUORESCENT LIGHT FIXTURE, W/LETTER DESIGN.	SURFACE / WALL		INTERIOR	
	STRIP FLUORESCENT LIGHT W/LETTER DESIGN.	SURFACE / WALL		DOOR RELEASE	
	LIGHT FIXTURE WITH LETTER DESIGNATION	RECESSED OR SURFACE		CIRCUIT ALARM BUTTON	
	LIGHT FIXTURE WITH LETTER DESIGNATION	WALL		CARD READER	
	EMERGENCY LIGHT FIXTURE W/BATTERY PACK	WALL		PUSH BUTTON FOR DOOR SIGNAL	
	EMERGENCY LIGHT FIXTURE W/REMOTE BATTERY	WALL		ELECTRIC STRIKE	
	EXIT LIGHT W/LTM DESIGN (SHADE INCL. FACE)	CEILING		SECURITY CAMERA	
	EXIT LIGHT W/LTM DESIGN (SHADE INCL. FACE)	WALL		EMERGENCY PANIC BUTTON	
	LANDSCAPE LIGHTING			CEILING MOUNTED SOUND SYSTEM SPEAKER	
	SINGLE POLE SWITCH	WALL - 48" AFF		CIRCUIT ALARM	
	THREE-WAY SWITCH	WALL - 48" AFF		SOUND CABINET	
	SWITCH WITH PILOT LIGHT	WALL - 48" AFF		VOLUME CONTROL	
	DIMMER SWITCH	WALL - 48" AFF		MAGNETIC HOLD-OPEN DEVICE ACTIVATED (BY FA SYSTEM)	
	GUESTROOM ANNUNCIATOR PUSHBUTTON	WALL - 48" AFF		HOME RUN W/2 CONDUCTORS	WALL OR CEILING
	DIMMER SWITCH	WALL - 48" AFF		CONDUIT RUN W/3 HOTS & 1 NEUTRAL	WALL OR CEILING
	TRANSFORMER	ABOVE CEILING		CONDUIT RUN W/3 HOTS, 1 NEUT, 1 GND	FLOOR OR EARTH
	CEILING MOUNTED OCCUPANCY SENSOR	CEILING		INDICATES HANDICAP ACCESS SUITE	
	WALL W/2 OCCUPANCY SENSOR (1/2 W/2 WIRELESS SWITCH)	WALL - 48" AFF		INDICATES HEARING IMPAIRED SUITE	
	DUPLEX RECEPTACLE - 20A	FLOOR		SWITCHING SCHEME	
	GFI DUPLEX RECEPTACLE - 20A	FLOOR		ABOVE FINISHED GRADE	
	QUAD-PLEX RECEPTACLE - 20A	WALL - 18" AFF		DRINKING FOUNTAIN	
	DUPLEX RECEPTACLE - 20A	WALL - 18" AFF		INDICATES DEVICE ON EMERGENCY CIRCUIT	
	QUAD-PLEX RECEPTACLE - 20A	WALL - 18" AFF		END-OF-LINE ALARM	
	DUPLEX RECEPTACLE - 20A FOR TWO USB PORTS	WALL - 18" AFF		GROUND FAULT INTERRUPTER	
	SPLIT DUPLEX RECEPTACLE	WALL - 18" AFF		ISOLATED GROUND	
	GFI DUPLEX RECEPTACLE - 20A	WALL - 18" AFF		NIGHT LIGHT	
	GFI QUAD-PLEX RECEPTACLE - 20A	FLOOR		U/G WEATHER PROOF	
	SPECIAL OUTLET (SEE SCHEDULE)	FLOOR		W/AF WEATHER PROOF	
	TELEPHONE OUTLET	WALL			
	PAY TELEPHONE OUTLET	WALL - 42" AFF			
	TELEVISION OUTLET	WALL - 18" AFF			
	FLOOR TELEVISION OUTLET	FLOOR			
	SECURITY CAMERA	CEILING			
	CARD READER	WALL - 18" AFF			
	DATA OUTLET	WALL - 18" AFF			
	DIRECTOR BOX	AS NOTED			
	SAFETY SWITCH	ON EQUIPMENT			
	FUSIBLE DISCONNECT	ON EQUIPMENT			
	MOTOR	ON EQUIPMENT			
	THERMOSTAT	WALL - 60" AFF			
	DUPLEX VOICE/DATA OUTLET	WALL - 18" AFF			
	FLOOR DUPLEX VOICE/DATA OUTLET	FLOOR			
	FIRE ALARM MANUAL PULL STATION	WALL - 48" AFF			
	GUESTROOM ANNUNCIATOR AUDIO/VISUAL	WALL - 6"-8" AFF			
	GUESTROOM ANNUNCIATOR AUDIO	WALL - 6"-8" AFF			
	COMBINATION HORN/STROKE LIGHT	WALL - 6"-8" AFF			
	STROKE LIGHT	WALL - 6"-8" AFF			
	FIRE BELL	WALL			
	SMOKE DETECTOR	CEILING			
	SMOKE DETECTOR	WALL			
	DUCT DETECTOR	IN MECH. DUCT			
	HEAT DETECTOR	CEILING			
	MAGNETIC DOOR HOLDER	WALL			
	SPECIAL DEVICE (AS NOTED)				
	SHUT DOWN RELAY				
	FLOOR SWITCH (SPRING-LOADED)				
	TAMPER SWITCH (SPRING-LOADED)				
	EMERGENCY SHUT-OFF SWITCH AND TIMER				
	ELECTRICAL PANELBOARD (SURFACE MTD.)				

- NOTES:**
- CONTRACTOR TO CLARIFY THE MODEL/BRAND NAME OF SWITCHES, RECEPTACLES, DIMERS/REL OUTLET, TV OUTLET WITH FRANCHISE/OB/MS PRIOR TO PLACING ORDERS/ INSTALLATION.
  - WATTS/DIMMER NO. 01-105 WITH N4120E-P POWER PACK.
  - INSTALL 3/4" CONDUIT WITH PULL STRING FROM OUTLET TO PER ROOM COMBINE (2) TELEPHONE OUTLETS PER HOME RUN. TYPICAL FOR COMMON AREAS, SEE PLANS FOR GUESTROOM REQUIREMENTS.
  - INSTALL 3/4" CONDUIT WITH PULL STRING FROM OUTLET TO NETWORK RAIL TYP. FOR COMMON AREAS, SEE PLANS FOR GUESTROOM REQUIREMENTS.
  - INSTALL 3/4" CONDUIT WITH PULL STRING FROM CAMERA LOCATIONS IN STAIRWELLS TO ABOVE SECOND FLOOR ACCESSIBLE CEILING. ALL OTHER CONDUITS SHALL HAVE 3/4" CONDUIT WITH PULL STRING INSTALLED FROM CAMERA LOCATIONS TO SECURITY CENTER. COORDINATE ALL EQUIPMENT LOCATIONS WITH SECURITY SYSTEM OWNER.
  - PROVIDE PILOT SWITCH WITH INDICATING LIGHT. LIGHT TO BE ON WHEN EQUIPMENT IS OPERATING. DISINCH W/AF PLATE WITH NAME OF EQUIPMENT CONTROLLED.
  - AUDIO/VISUAL DEVICES, TRANSFORMERS AND PUSHBUTTONS FOR GUESTROOM ANNUNCIATOR SHALL BE AS MANUFACTURED BY EDWARDS, KIT NO.704 PROVIDE ADDITIONAL AUDIO/VISUAL DEVICES WHERE SHOWN ON DRAWINGS, EDWARDS CATALOG NO.4638-25.
  - CONDUIT SIZE SHALL BE MINIMUM 1/2" CONDUIT SIZE SHALL BE MINIMUM #12 CU. AND CONDUCTOR SIZES INDICATED AT "HOME RUN" SHALL BE CARRIED THROUGHOUT DIVERSE CIRCUIT RUN UNLESS NOTES OTHERWISE ON PLANS. #14 MINIMUM SHALL BE USED FOR CONTROLS.

**LIGHT FIXTURE SCHEDULE**

(CONTRACTOR TO CLARIFY WITH ARCHITECT/OWNER PRIOR TO PLACING ORDERS/ INSTALLATION)

TYPE	MANUFACTURER AND MODEL	MOUNTING	No., SIZE AND TYPE LAMPS	NOTES
L03	SARRN LIGHTING # SES-02L6-3000-27	RECESSED	27W LED	
L05	ALIND LIGHTING # L04-5-23-30-U-CUSTOM-G3/L04XWH-C5	SURFACE	28.2W LED	
L08	BOCA FLASHER # PPLAS-10-3000-30W0-10-3-1-5-0-18-17	LINEAR LED	16W LED / FT	
L0A4	SARRN LIGHTING # SES-TRACELIGHT-4FT-W/WH/SEE-LED-RECO-18W-3000-15	TRACK	15W LED	
L11A	SARRN LIGHTING # SES-WP4-101-KXX-C000	RECESSED	40-60W LED	
L13A	SARRN LIGHTING # SES-WR-48-3000	SURFACE	48W LED	
L15	SARRN LIGHTING # SES-DL6M-18-3500	RECESSED	15W LED	IP 43
L16	SARRN LIGHTING # SES-4"-GMBAL-DOWNLIGHT-9	RECESSED	9W LED	
L17	SARRN LIGHTING # SES-4"-GMBAL-DOWNLIGHT-9	RECESSED	9W LED	
L18	SARRN LIGHTING # SES-LRW18M-XXXX-90	COVE LIGHTING	90W LED	IP 65
L19	SARRN LIGHTING # SES-4"-GMBAL-DOWNLIGHT-9	RECESSED	9W LED	
L20	ORCO # 3302023	IN GROUND	LED 4W	WET LOCATION (1)
L21	SARRN LIGHTING # SES-WR-48-3000	SURFACE	48W LED	
L23	SARRN LIGHTING # SES-WR-48-3000	SUSPENDED	48W LED	
PA-300	SELECTED BY OWNER/D	PENDANT	10-20W LED	
PA-301	SELECTED BY OWNER/D	PENDANT	10-20W LED	
PA-302	SELECTED BY OWNER/D	PENDANT	10-15W LED	
PA-303	SELECTED BY OWNER/D	PENDANT	10-20W LED	
PA-304	SELECTED BY OWNER/D	PENDANT	LED	
PA-305	SELECTED BY OWNER/D	PENDANT	LED	
X1	SARRN LIGHTING # SES-ED0201-R	WALL SCENE	1W LED	EXIT LIGHT
X2	THE EXIT LIGHT CO. # EL-PW-6-AR	2.55W	2122W HALOGEN	EMERGENCY LIGHT
X3	SARRN LIGHTING # SES-ED0201-R	WALL SCENE	1W LED	EXTERIOR DOOR EMERGENCY LIGHT
SA	SARRN LIGHTING # SES-1805-3000-12013	POLES	120W LED	FLOOR EXIT LIGHT
SB	SARRN LIGHTING # SES-1805-3000-12013	POLES	120W LED	POLE SELECTED BY THE OWNER
SC	SARRN LIGHTING # SES-1805-3000-12013	POLES	120W LED	FULL OUT-GO-FF
SD	SARRN LIGHTING # SES-1805-3000-12013	POLES	120W LED	FULL OUT-GO-FF
SE	KIM LIGHTING # LYNDS SP-4F 18L 3K UV	IN GRADE	23W/LED	
SF	SARRN LIGHTING # SES-05-3000-75	IN GRADE	75W LED	

- NOTES:**
- VERIFY WITH CITY REQUIREMENT FOR SHIELDS AND/OR CLARE CONTROLS PRIOR TO INSTALLATION.



Naperville, Illinois  
Facility ID: #55124

TRU BY HILTON  
Owner  
ZJ Investment Group, LLC  
Naperville  
Illinois

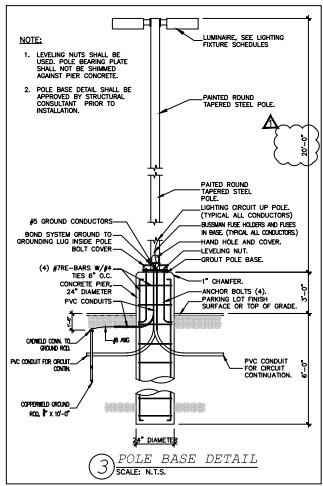
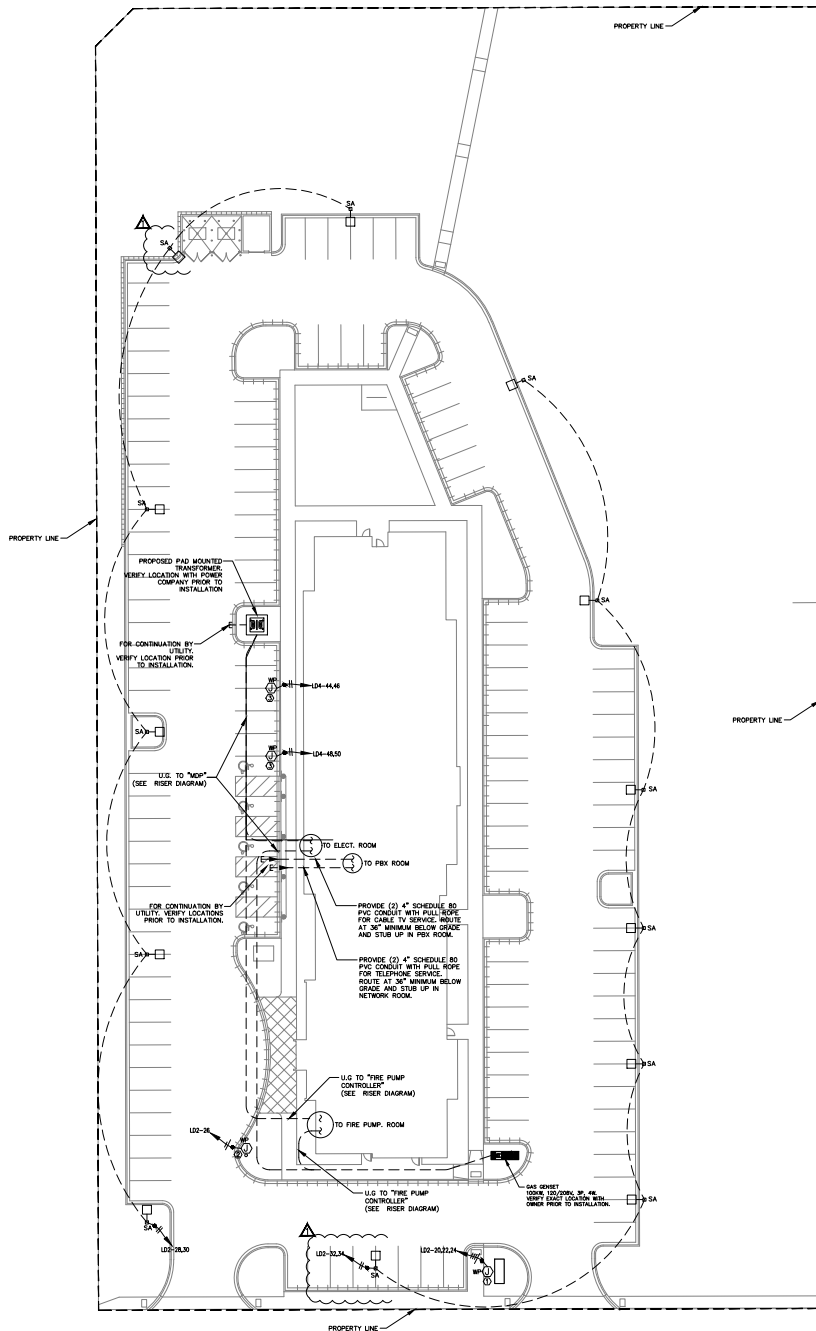
TRU BY HILTON  
Diehl Road  
East of Moxie corporation  
Naperville, Illinois 60563



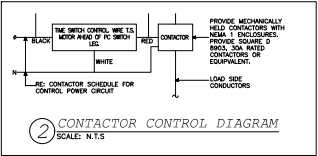
Revisions:  
1. City comments

Drawn By: PL  
Checked By: PV  
Issue Date: JUNE 04, 2019  
Project No:

SHEET INFORMATION  
NOTES & LEGEND OF SYMBOLS



- GENERAL SITE NOTES:**
- FOR PARKING LOT LIGHTING CONTROL DIAGRAM SEE #2, E6.0
  - PROVIDE METER AND CT'S PER UTILITY CO. SPECIFICATIONS.
  - METAL PAD MOUNTED TRANSFORMER PER UTILITY CO. SPECIFICATIONS. COORDINATE ALL OTHER REQUIREMENTS WITH LOCAL UTILITY CO.
  - CONTRACTOR SHALL PROVIDE 5" SCHEDULE 80 PVC CONDUITS WITH PULL HOPE AT A MINIMUM OF 30" BELOW GRADE. TERMINATE CONDUIT AT A LOCATION SPECIFIED BY UTILITY CO. COORDINATE ALL REQUIREMENTS.
  - CONTRACTOR IS RESPONSIBLE FOR COORDINATING ALL UTILITY SERVICES TO THE BUILDING WITH THEIR RESPECTIVE PROVIDERS. FAILURE TO DO SO WILL NOT RESULT IN ANY EXTRA FINANCIAL COMPENSATION FROM THE OWNER. CONTRACTOR SHALL HAVE ALL UTILITY SERVICE REQUIREMENTS IN THE BASE BID.
  - CONTRACTOR SHALL BE RESPONSIBLE FOR BACK FILLING, TRENCHING AND SITE RESTORATION. THE SELECT BROOKFIELD MATERIAL MUST NOT CONTAIN ANY SHARP OR FOREIGN OBJECTS.
  - THE ELECTRICAL CONTRACTOR SHALL COORDINATE AS NECESSARY ALL UNDERGROUND LOCATIONS WITH OTHER TRADES PRIOR TO DIGGING BEING DONE.
  - THE CONTRACTOR SHALL INCLUDE IN THE BID ALL ELECTRIC UTILITY FEES TO PROVIDE ELECTRICAL SERVICE TO THE PROJECT.



- KEY NOTES:**
- JAROB FOR MAIN SIGN. VERIFY LOCATION WITH OWNER PRIOR TO INSTALLATION.
  - JAROB FOR FLAG POLE. VERIFY LOCATION WITH OWNER PRIOR TO INSTALLATION.
  - JAROB FOR ELECTRIC VEHICLE CHARGERS. CONTRACTOR SHALL VERIFY LOCATION WITH THE CIVIL ENGINEERING/OWNER PRIOR INSTALL. 1-1/2" CONDUIT FOR THE FUTURE ELECTRIC VEHICLE CHARGERS. THOSE CONDUITS HAVE TO FINISH INTO AN ENCLOSURE, JUNCTION BOX ETC.

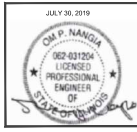
**1 SITE PLAN**  
SCALE: 1/20" = 1'-0"



Naperville, Illinois  
Facility ID: #55124

TRU BY HILTON  
Owner  
ZJ Investment Group, LLC  
Naperville  
Illinois

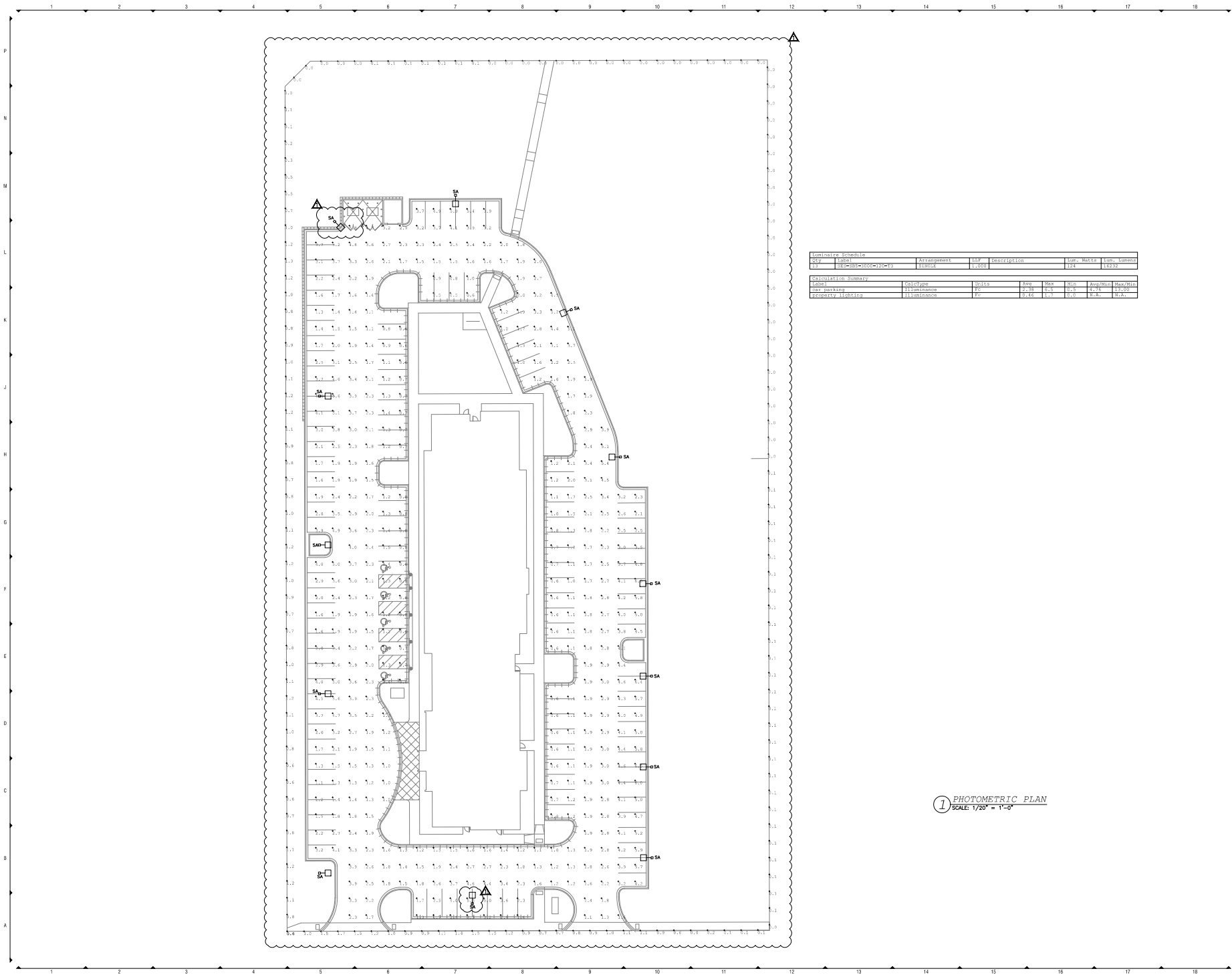
TRU BY HILTON  
Diehl Road  
East of Molex corporation  
Naperville, Illinois 60563



Revisions

No.	Description

Drawn By: PL  
Checked By: DV  
Issue Date: JUNE 04, 2019  
Project No:



Summary Schedule						
Qty	Label	Arrangement	WSP	Description	Sum. Watts	Lum. Lumens
12	ES=300=200=20=10	3000A	1,000		124	16232

Calculation Summary						
Room	Footcandle	Watts	WSP	WSP	WSP	WSP
Gar Parking	11.00	100	2.28	2.5	2.5	4.76
Property Lighting	11.00	100	2.46	2.5	2.5	3.42

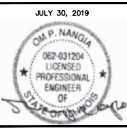
1 PHOTOMETRIC PLAN  
SCALE: 1/20" = 1'-0"



Naperville, Illinois  
Facility ID: #55124

TRU BY HILTON  
Owner  
ZJ Investment Group, LLC  
Naperville  
Illinois

TRU BY HILTON  
Diehl Road  
East of Molex corporation  
Naperville, Illinois 60563



Revisions:

1. City comments

Drawn By: PL  
Checked By: RV  
Issue Date: JUNE 04, 2019  
Project No:

