



LOT DIMENSIONS & AREAS ARE APPROXIMATIONS & WILL VARY AT TIME OF FINAL PLATTING.

PRELIMINARY PLAT OF SUBDIVISION FOR WAGNER FARMS

PART OF THE SOUTHWEST QUARTER OF SECTION 10, TOWNSHIP 37 NORTH, RANGE 9 EAST OF THE THIRD PRINCIPAL MERIDIAN, IN WILL COUNTY, ILLINOIS.

N. QUARTER CORNER OF SECTION AS ESTABLISHED PER DATA ON R86-057627

PARCEL INDEX NUMBER table with columns for parcel numbers and their corresponding index numbers.



LOCATION MAP

BENCHMARKS/CONTROL POINTS

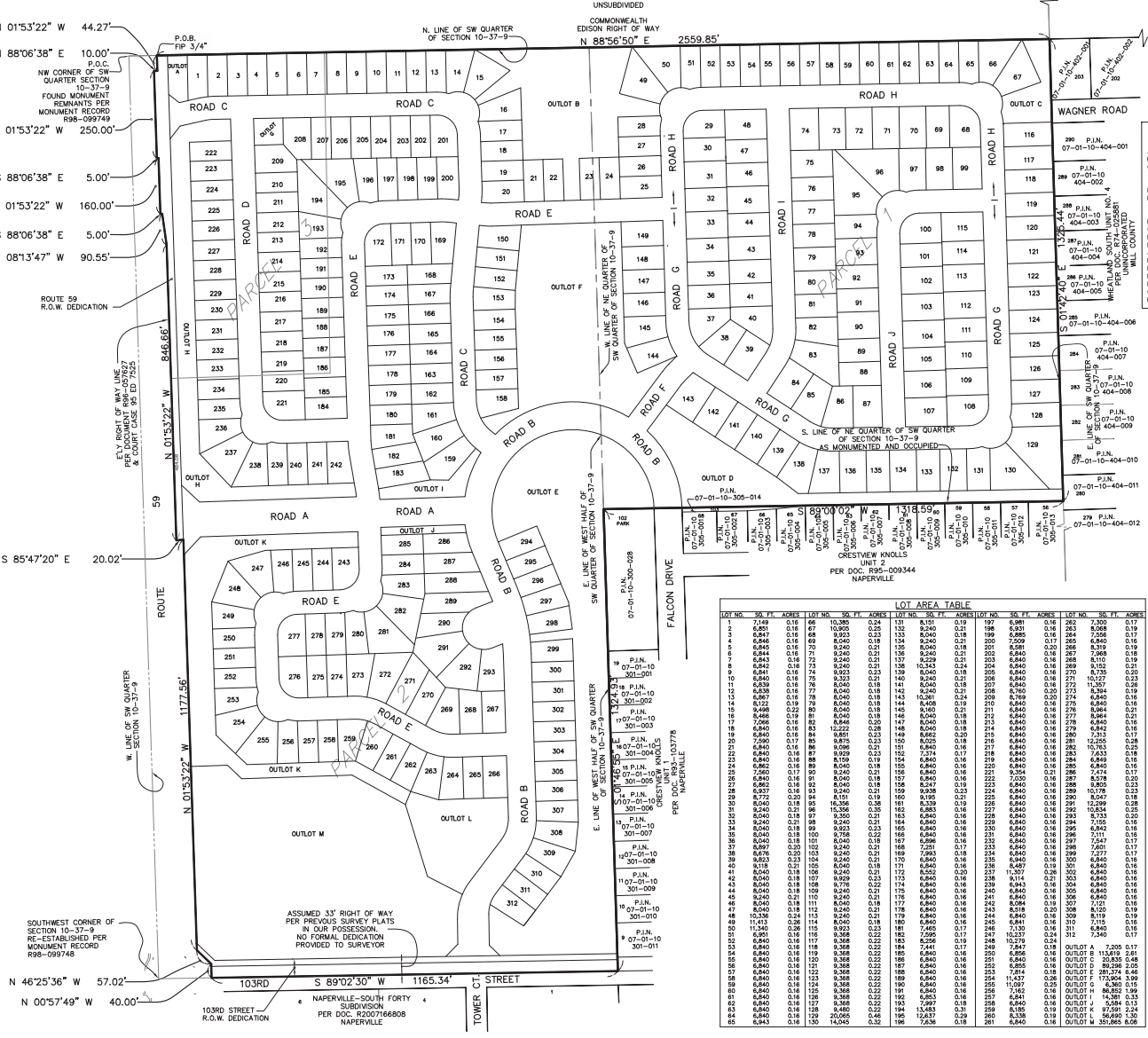
- ELEVATION REFERENCE MARKS
RMI-NAPERVILLE SURVEY MON. #1503. BERNSTEN 30 TOP SECURITY MONUMENT...
RMC-NAPERVILLE SURVEY MON. #1002. BERNSTEN 30 TOP SECURITY MONUMENT...

NOTES

- 1. ADDITIONAL P.U. & D.E. EASEMENTS MAY BE REQUIRED ON FINAL PLATS BASED ON UTILITY SIZE AND LOCATIONS FROM FINAL ENGINEERING.
2. DIMENSIONS SHOWN ALONG CURVED LINES ARE ARC DISTANCES.
3. ALL RIGHT-OF-WAYS ARE TO BE PUBLIC DEDICATIONS.

LINE LEGEND

- SUBDIVISION BOUNDARY LINE (Heavy Solid Line)
-- LOT LINE/PROPERTY LINE (Solid Line)
-- EXISTING CORPORATE LIMITS OF THE CITY OF NAPERVILLE (Heavy Dashed Line)

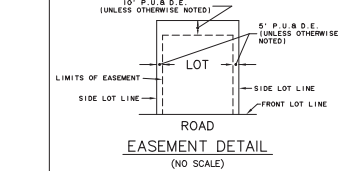


SITE DATA

Table with columns for site data items (A-Gross Modified Density, B-Proposed Zoning, etc.) and their values.

ABBREVIATIONS

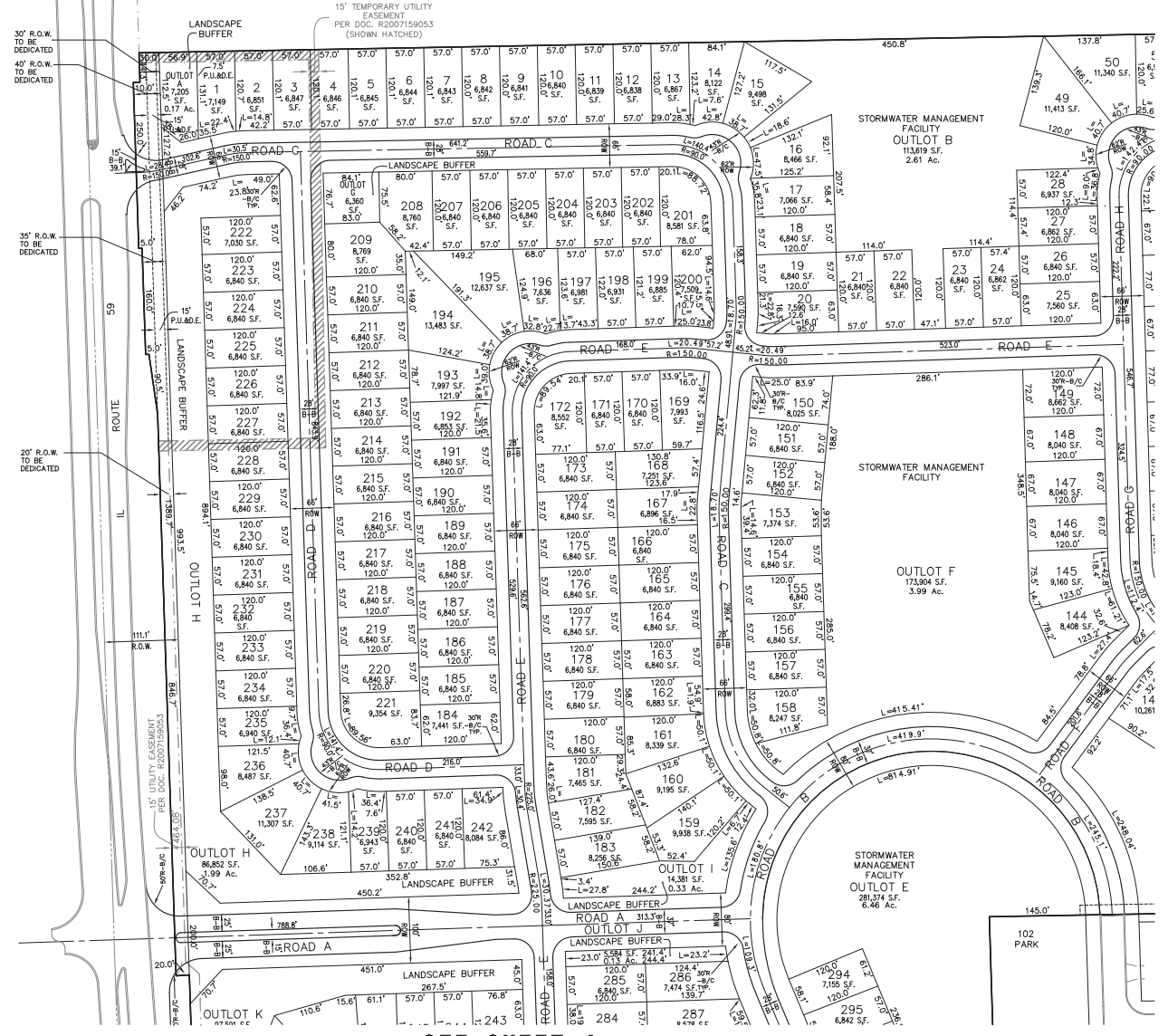
- N. - NORTH
S. - SOUTH
E. - EAST
W. - WEST



LOT AREA TABLE with columns for LOT NO., SQ. FT., ADRES, and other lot details.

PREPARED FOR: PULTE HOME COMPANY, LLC
1900 E. GOLF ROAD, SUITE 300
SCHAUMBURG, IL 60173
(847) 230-5400
PREPARED BY: CEMCON, Ltd.
Consulting Engineers, Land Surveyors & Planners
2280 White Oak Circle, Suite 100
Aurora, Illinois 60502-9875
PH: 630.862.2100 FAX: 630.862.2199

UNSUBDIVIDED  
COMMONWEALTH EDISON RIGHT OF  
WAY



SEE SHEET 3

SEE SHEET 4

**PARCEL ONE:**  
THE NORTH-EAST QUARTER OF THE SOUTH-WEST QUARTER OF SECTION 10, WHEATLAND TOWNSHIP, WILL COUNTY, ILLINOIS.

**PARCEL TWO:**  
THE WEST HALF OF THE SOUTH-WEST QUARTER OF SECTION 10, WHEATLAND TOWNSHIP, WILL COUNTY, ILLINOIS;

EXCEPT THAT PART TAKEN BY THE ILLINOIS DEPARTMENT OF TRANSPORTATION FOR HIGHWAY EXPANSION ALONG ILLINOIS ROUTE 59 IN COURT CASE 95 ED 7525; AND ALSO EXCEPT THAT PART OF THE SOUTH-WEST QUARTER OF SECTION 10, TOWNSHIP 37 NORTH, RANGE 9 EAST OF THE THIRD PRINCIPAL MERIDIAN DESCRIBED BY COMMENCING AT THE NORTHWEST CORNER OF THE SOUTH-WEST QUARTER OF SAID SOUTH-WEST QUARTER AND HEADING THENCE NORTH 88 DEGREES 56 MINUTES 52 SECONDS EAST ALONG THE NORTH LINE OF SAID SOUTH-WEST QUARTER, A DISTANCE OF 80.58 FEET TO THE POINT OF BEGINNING; CONTINUING AT THE POINT OF BEGINNING, THENCE NORTH 88 DEGREES 56 MINUTES 52 SECONDS EAST ALONG THE NORTH LINE OF SAID SOUTH-WEST QUARTER, A DISTANCE OF 480.00 FEET TO A POINT; THENCE SOUTH 01 DEGREE 03 MINUTES 08 SECONDS WEST, A DISTANCE OF 920.00 FEET TO A POINT; THENCE SOUTH 88 DEGREES 06 MINUTES 54 SECONDS WEST, A DISTANCE OF 466.58 FEET TO A POINT OF THE EASTERLY RIGHT-OF-WAY LINE OF ILLINOIS ROUTE 59 PER DOCUMENT R96-057627; THENCE NORTH 01 DEGREE 53 MINUTES 06 SECONDS WEST, ALONG SAID EASTERLY RIGHT-OF-WAY LINE, A DISTANCE OF 392.58 FEET TO A POINT; THENCE NORTH 08 DEGREE 13 MINUTES 31 SECONDS WEST, A DISTANCE OF 90.55 FEET TO A POINT; THENCE SOUTH 88 DEGREES 06 MINUTES 54 SECONDS WEST, A DISTANCE OF 5.00 FEET TO A POINT; THENCE NORTH 01 DEGREE 53 MINUTES 06 SECONDS WEST, A DISTANCE OF 160.00 FEET TO A POINT; THENCE SOUTH 88 DEGREES 06 MINUTES 54 SECONDS WEST, A DISTANCE OF 5.00 FEET TO A POINT; THENCE NORTH 01 DEGREE 53 MINUTES 06 SECONDS WEST, A DISTANCE OF 250.00 FEET TO A POINT; THENCE NORTH 88 DEGREES 06 MINUTES 54 SECONDS EAST, A DISTANCE OF 10.00 FEET TO A POINT; THENCE NORTH 01 DEGREE 53 MINUTES 06 SECONDS WEST, A DISTANCE OF 44.30 FEET TO THE POINT OF BEGINNING, EXCEPT THAT PART PREVIOUSLY ANNEXED TO THE CITY OF NAPERVILLE.

**PARCEL THREE:**  
THAT PART OF THE SOUTH-WEST QUARTER OF SECTION 10, TOWNSHIP 37 NORTH, RANGE 9 EAST OF THE THIRD PRINCIPAL MERIDIAN DESCRIBED BY COMMENCING AT THE NORTHWEST CORNER OF THE SOUTH-WEST QUARTER OF SAID SOUTH-WEST QUARTER AND HEADING THENCE NORTH 88 DEGREES 56 MINUTES 52 SECONDS EAST ALONG THE NORTH LINE OF SAID SOUTH-WEST QUARTER, A DISTANCE OF 80.58 FEET TO THE POINT OF BEGINNING; CONTINUING AT THE POINT OF BEGINNING, THENCE NORTH 88 DEGREE 56 MINUTES 52 SECONDS EAST ALONG THE NORTH LINE OF SAID SOUTH-WEST QUARTER, A DISTANCE OF 480.00 FEET TO A POINT; THENCE SOUTH 01 DEGREE 03 MINUTES 08 SECONDS EAST, A DISTANCE OF 920.00 FEET TO A POINT; THENCE SOUTH 88 DEGREES 06 MINUTES 54 SECONDS WEST, A DISTANCE OF 466.58 FEET TO A POINT OF THE EASTERLY RIGHT-OF-WAY LINE OF ILLINOIS ROUTE 59 PER DOCUMENT R96-057627; THENCE NORTH 01 DEGREE 53 MINUTES 06 SECONDS WEST, ALONG SAID EASTERLY RIGHT-OF-WAY LINE, A DISTANCE OF 392.58 FEET TO A POINT; THENCE NORTH 08 DEGREE 13 MINUTES 31 SECONDS WEST, A DISTANCE OF 90.55 FEET TO A POINT; THENCE SOUTH 88 DEGREES 06 MINUTES 54 SECONDS WEST, A DISTANCE OF 5.00 FEET TO A POINT; THENCE NORTH 01 DEGREE 53 MINUTES 06 SECONDS WEST, A DISTANCE OF 160.00 FEET TO A POINT; THENCE SOUTH 88 DEGREES 06 MINUTES 54 SECONDS WEST, A DISTANCE OF 5.00 FEET TO A POINT; THENCE NORTH 01 DEGREE 53 MINUTES 06 SECONDS WEST, A DISTANCE OF 250.00 FEET TO A POINT; THENCE NORTH 88 DEGREES 06 MINUTES 54 SECONDS EAST, A DISTANCE OF 10.00 FEET TO A POINT; THENCE NORTH 01 DEGREE 53 MINUTES 06 SECONDS WEST, A DISTANCE OF 44.30 FEET TO THE POINT OF BEGINNING.

PREPARED FOR:  
PULTE HOME COMPANY, LLC  
1900 E. GOLF ROAD, SUITE 300  
SCHAUMBURG, IL 60173  
(847) 230-5400

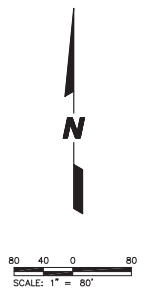
PREPARED BY:  
**CEMCON, Ltd.**  
Consulting Engineers, Land Surveyors & Planners  
2280 White Oak Circle, Suite 100  
Aurora, Illinois 60502-9675  
PH: 630.862.2100 FAX: 630.862.2199  
E-Mail: cadd@cemcon.com Website: www.cemcon.com

DISC NO.: 402109 FILE NAME: FREDV  
DRAWN BY: LAL FLD BK. / PG. NO.: ----  
COMPLETION DATE: 07-30-18 JOB NO.: 402.109  
XREF: TOPO PROJECT MANAGER: CRM

PRELIMINARY PLAT OF SUBDIVISION FOR WAGNER FARMS  
CITY OF NAPERVILLE PROJECT NO. 18-10000087  
SHEET 2 OF 4  
Copyright © 2018 Cemcon, Ltd. All rights reserved.

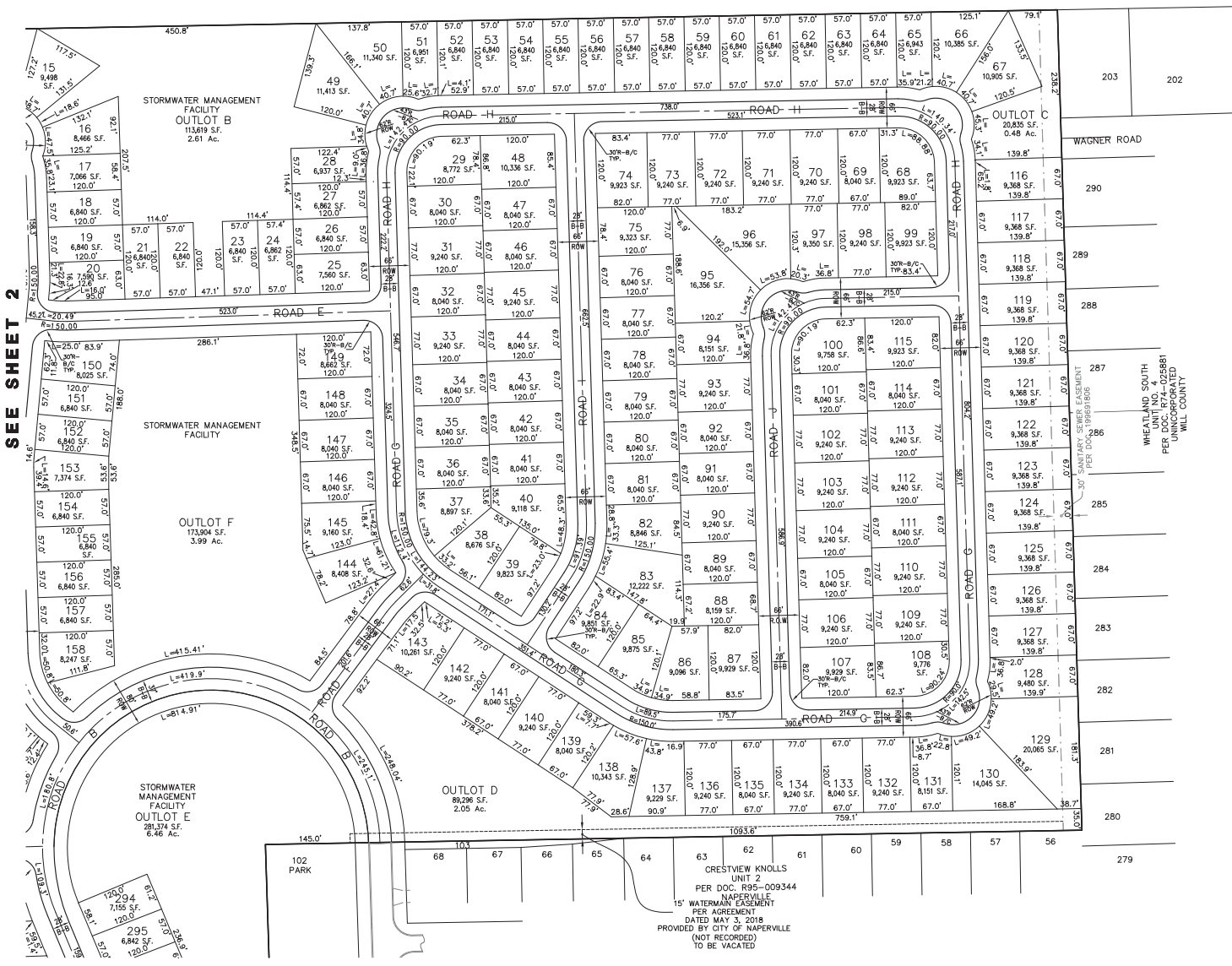
EXHIBIT B

UNSUBDIVIDED  
COMMONWEALTH EDISON RIGHT OF  
WAY



SEE SHEET 2

NOT FILED: 12/12/2018 BY: EILEE LUNDERS DRAWING DATE: 11/15/2018 DATE PLOTTED: 12/12/2018 PROJECT: PRELIMINARY



PREPARED FOR:  
PULTE HOME COMPANY, LLC  
1900 E. GOLF ROAD, SUITE 300  
CHAUMBURG, IL 60173  
(847) 230-5400

PREPARED BY:  
**CEMCON, Ltd.**  
Consulting Engineers, Land Surveyors & Planners  
2280 White Oak Circle, Suite 100  
Aurora, Illinois 60502-9675  
PH: 630.862.2100 FAX: 630.862.2199  
E-Mail: codd@cemcon.com Website: www.cemcon.com

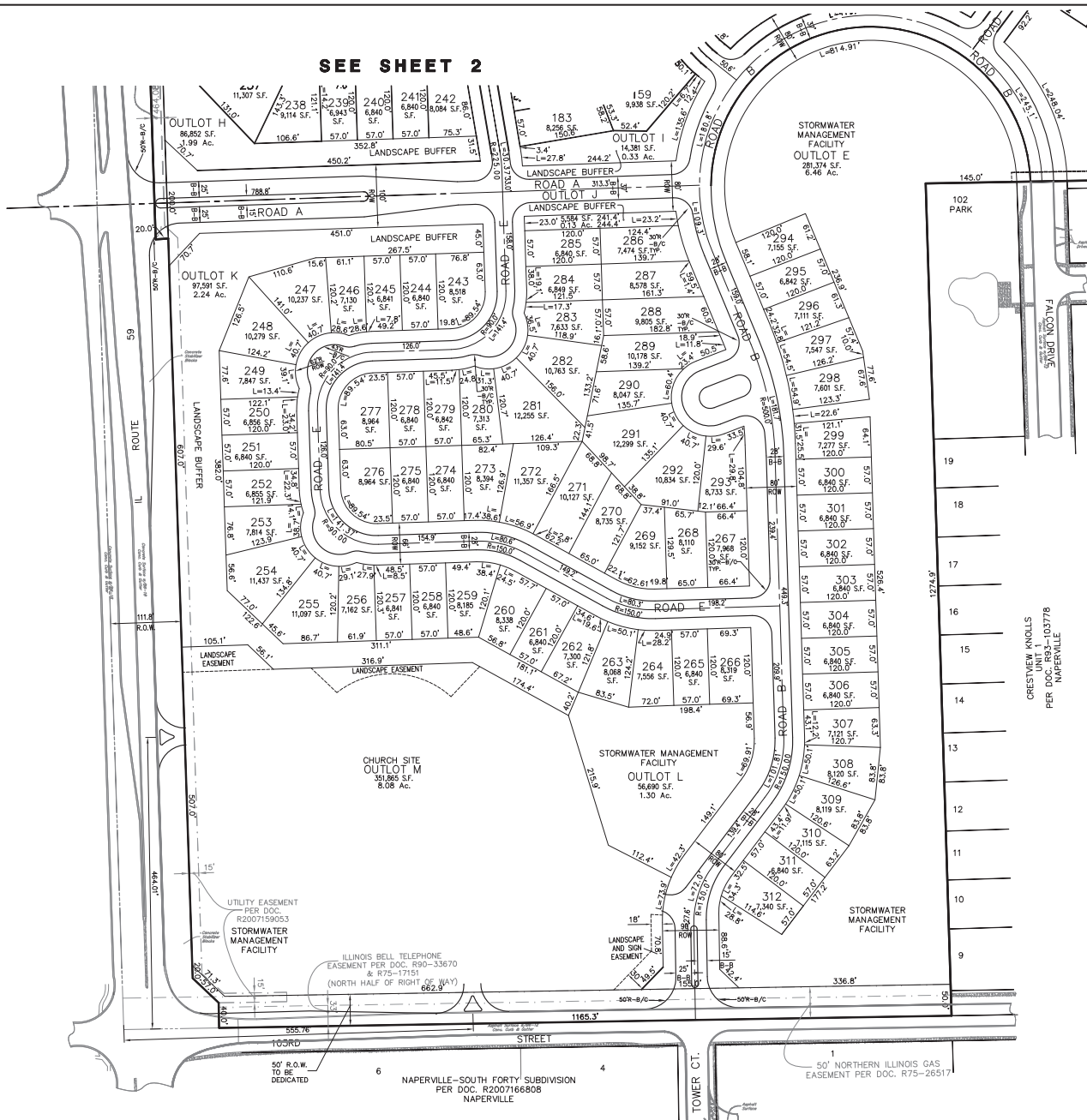
DISC NO.: 402109 FILE NAME: PREOVR  
DRAWN BY: LAL FLD. BK. / PG. NO.: -----  
COMPLETION DATE: 07-30-18 JOB NO.: 402.109  
XREF : TOPO PROJECT MANAGER : CRM

CRESTVIEW KNOLLS  
UNIT 2  
PER DOC. REC-009344  
NAPERVILLE  
15' WATERMAIN EASEMENT  
PER AGREEMENT  
DATED MAY 3, 2018  
PROVIDED BY CITY OF NAPERVILLE  
(NOT RECORDED)  
TO BE VACATED

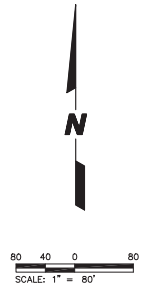
**PRELIMINARY PLAT OF SUBDIVISION FOR WAGNER FARMS  
CITY OF NAPERVILLE PROJECT NO. 18-1000087**

SHEET 3 OF 4  
Copyright © 2018 Cemcon, Ltd. All rights reserved.

# EXHIBIT B



SEE SHEET 2



PREPARED FOR:  
 PULTE HOME COMPANY, LLC  
 1900 E. GOLF ROAD, SUITE 300  
 SCHAUMBURG, IL 60173  
 (847) 230-5400

PREPARED BY:  
**CEMCON, Ltd.**  
 Consulting Engineers, Land Surveyors & Planners  
 2280 White Oak Circle, Suite 100  
 Aurora, Illinois 60502-9875  
 PH: 630.862.2100 FAX: 630.862.2199  
 E-Mail: ccs@cemcon.com Website: www.cemcon.com

DISC NO.: 402109 FILE NAME: PREDRV  
 DRAWN BY: LAL FLD. BK. / FC. NO.:  
 COMPLETION DATE: 07-30-18 JOB NO.: 402.109  
 XREF : TOPO PROJECT MANAGER : CRM

**PRELIMINARY PLAT OF SUBDIVISION FOR WAGNER FARMS**  
**CITY OF NAPERVILLE PROJECT NO. 18-1000087**  
 SHEET 4 OF 4  
 Copyright © 2018 Cemcon, Ltd. All rights reserved.

EXHIBIT B

PLAT FILE CREATED: 12/12/2018 BY: LAL/CEMCON  
 DRAWING DATE: 12/12/2018 BY: LAL/CEMCON  
 DRAWING DATE: 12/12/2018 BY: LAL/CEMCON