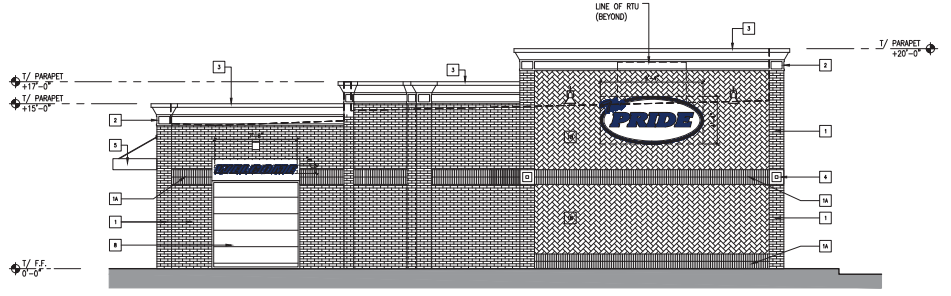
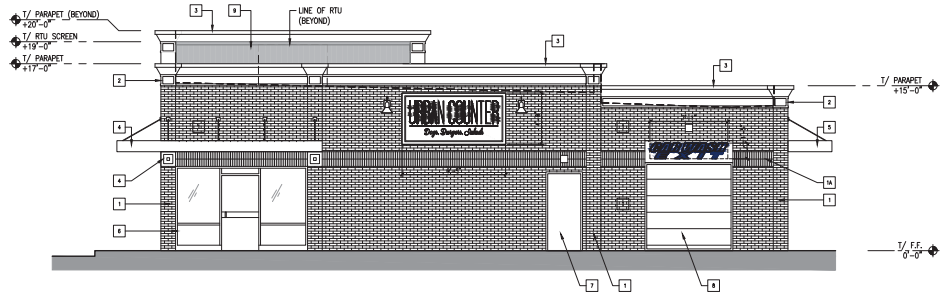


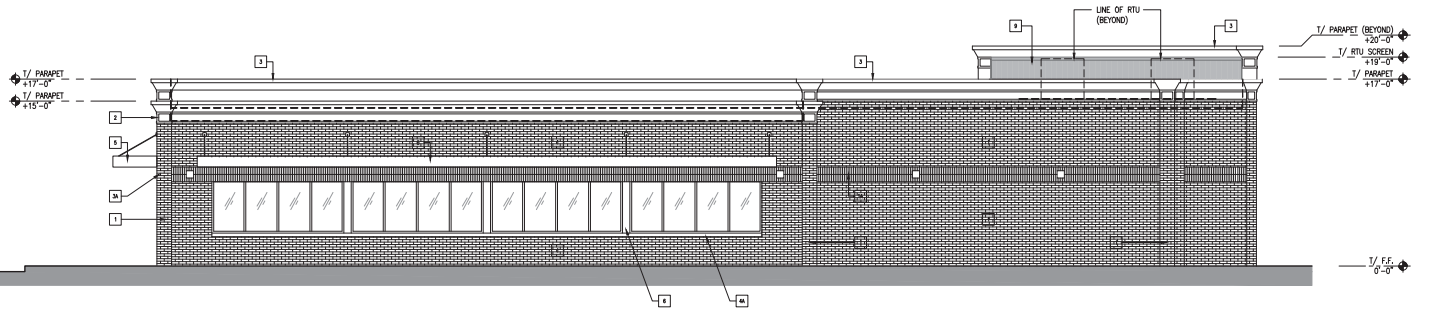
01 - FRONT ELEVATION
3/16" = 1'-0"



02 - SIDE ELEVATION
3/16" = 1'-0"



03 - SIDE ELEVATION
3/16" = 1'-0"



04 - REAR ELEVATION
3/16" = 1'-0"

KEY NOTES [1]	
1	BRICK - Shaw City Brick; COPPERTONE; FLUSHED COPPER
1A	BRICK (SOLDER COURSE) - Shaw City Brick; COPPERTONE; FLUSHED COPPER
1B	BRICK (HERRINGBONE) - Shaw City Brick; COPPERTONE; FLUSHED COPPER
2	STUCCO CORNICE - LIGHT GRAY
3	PREFINISHED METAL COPING - LIGHT GRAY
4	CAST STONE MEDALLION
4A	CAST STONE SILL
5	METAL CANOPY - PAINT: OAKW (SW 6990)
6	ALUMINUM STOREFRONT - PREFINISH: DARK BRONZE
7	METAL DOOR - PAINT: STATUS BRONZE (SW 764X)
8	FACT ACTING OVERHEAD DOOR
9	PREFINISHED STANDING SEAM METAL PANEL - LIGHT GRAY

