

LANDSCAPING NOTES:

- A. PROJECT INCLUDES FURNISH INSTALL AND MAINTAIN LANDSCAPE WORK AS SHOWN ON THESE CONTRACT DRAWINGS OR AS IDENTIFIED HEREIN
1. TREES
 2. TOPSOIL AND SOIL AMENDMENTS.
 3. INITIAL MAINTENANCE OF INSTALLED LANDSCAPE MATERIALS.
 4. PRUNING AND RELOCATION OF EXISTING LAWNS AFFECTED BY CONSTRUCTION ACTIVITIES.

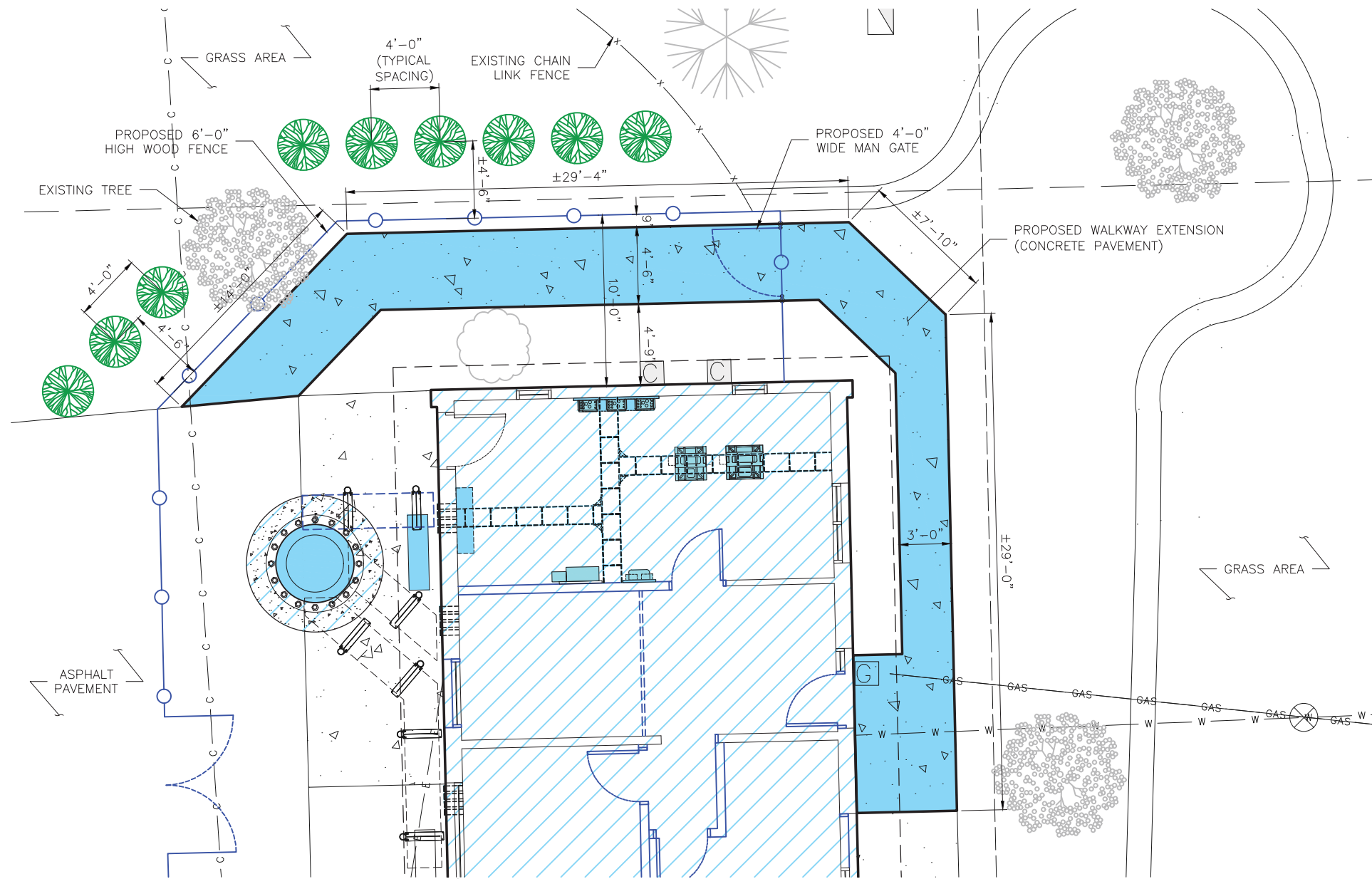
- B. QUALITY ASSURANCE
1. PLANTS AND TREES: BALLED AND BURLAPED PLANTS AND TREES BE GRADED TO AMERICAN STANDARD FOR NURSERY STOCK, ANSI Z60.1.
 2. TESTING: LABORATORY TESTING OF EXISTING SOILS AND FILL MATERIALS FOR SUITABLE SOIL AMENDMENTS AND FERTILIZER SHALL BE PERFORMED BY THE LANDSCAPE CONTRACTOR.
 3. CONTRACTOR SHALL PREPARE THE SURFACE OF DISTRIBUTED AREAS PRIOR TO SEEDING.
 4. FERTILIZER AND SEED SHALL BE APPLIED AT UNIFORM RATES AS DETERMINED BY THE CONTRACTOR AND APPROVED BY THE ENGINEER.
 5. CONTRACTOR SHALL WATER SEEDED AREAS AS OFTEN AS REQUIRED TO OBTAIN GERMINATION AND TO OBTAIN AND MAINTAIN SATISFACTORY GROWTH.
 6. THE STAND OF VEGETATIVE COVER RESULTING FROM SEEDING SHALL NOT BE CONSIDERED SATISFACTORY UNTIL ACCEPTED BY THE ENGINEER. IF AREAS ARE DETERMINE TO BE UNACCEPTABLE, THE MUCH WILL BE REMOVED AND ALL AREAS SHALL BE RESEEDED, REFERTILIZED AND REMULCHED PER RECOMMENDED APPLICATION PROCEDURES AT THE CONTRACTORS EXPENSE.
 7. THE CONTRACTOR SHALL BEGIN MAINTENANCE PERIOD IMMEDIATELY AFTER PLANTING OF VEGETATIVE COVER.
 8. THE CONTRACTOR SHALL MAINTAIN THE VEGETATIVE COVER AREA, FOR THE PERIODS REQUIRED TO ESTABLISH AN ACCEPTABLE GROWTH, BUT NOT LESS THAN 60 DAYS AFTER OF PLANTING OF VEGETATIVE COVER. IF SEEDED IN THE FALL AND NOT GIVEN A FULL 60 DAYS OF MAINTENANCE, OR IF NOT CONSIDERED ACCEPTABLE BY THE ENGINEER AT THAT TIME, CONTINUE MAINTENANCE DURING THE FOLLOWING SPRING UNTIL ACCEPTABLE VEGETATIVE COVER STAND IS ESTABLISHED.

- C. PRODUCTS
1. PLANT MATERIALS SHALL BE AS SHOWN ON THE PLAN ON THIS DWG.
 2. TOPSOIL: FERTILE, FRIABLE TOPSOIL FROM OFF SITE, OR FROM SITE STOCKPILE WITH ADDITIONAL MIXED-IN FERTILE, FRIABLE TOPSOIL FROM LOCAL SUPPLIERS OF TOPSOIL.
 3. SOIL AMENDMENTS: THE SOIL AMENDMENTS MAY BE ANY OF THE FOLLOWING, AS REQUIRED OR INDICATED IN THE LABORATORY TESTING REPORTS.

- a. LIME: DOLMITIC LIMESTONE.
- b. ALUMINUM SULFATE: COMMERCIAL GRADE.
- c. PEAT HUMUS: FINELY DIVIDED PEAT.
- d. SUPERPHOSPHATE: 20 PERCENT AVAILABLE PHOSPHORIC ACID.
- e. SAND: CLEAN, WASHED SAND.
- f. PERLITE: NBS PS 23.
- g. SAWDUST: ROTTED SAWDUST FREE OF CHIPS AND STONES.
- h. MANURE: ROTTED STABLE MANURE.
- i. COMMERCIAL FERTILIZER: NEUTRAL CHARACTER FOR PLANT MATERIALS AND LAWNS.
- j. MULCH: SHREDDED HARDWOOD MULCH.

4. LANDSCAPE MATERIALS: THE LANDSCAPE MATERIALS MAY BE OF THE FOLLOWING, AS SHOWN ON THESE CONTRACT DRAWINGS.

- a. GRAVEL: WATER-WORN GRAVEL.
- b. ANTI-EROSION MULCH: SEED-FREE HAY OR THRESHED STRAW.
- c. ANTI-DESICCANT: EMULSION TYPE, FILM-FORMING.
- d. PLASTIC SHEET: BLACK POLYETHYLENE, 8 MILS.
- e. FILTRATION FABRIC: WATER PERMEABLE FIBERGLASS OR POLYPROPYLENE FABRIC.
- f. WRAPPING: TREE-WRAP TAPE.
- g. STAKES AND GUYS: NEW HARDWOOD, TREATED SOFTWOOD, OR REDWOOD.
- h. METAL EDGING: COMMERCIAL STEEL EDGING.
- i. WOOD HEADERS AND EDGING: ALL HEART REDWOOD OR PRESSURE TREATED SOUTHERN YELLOW PINE.

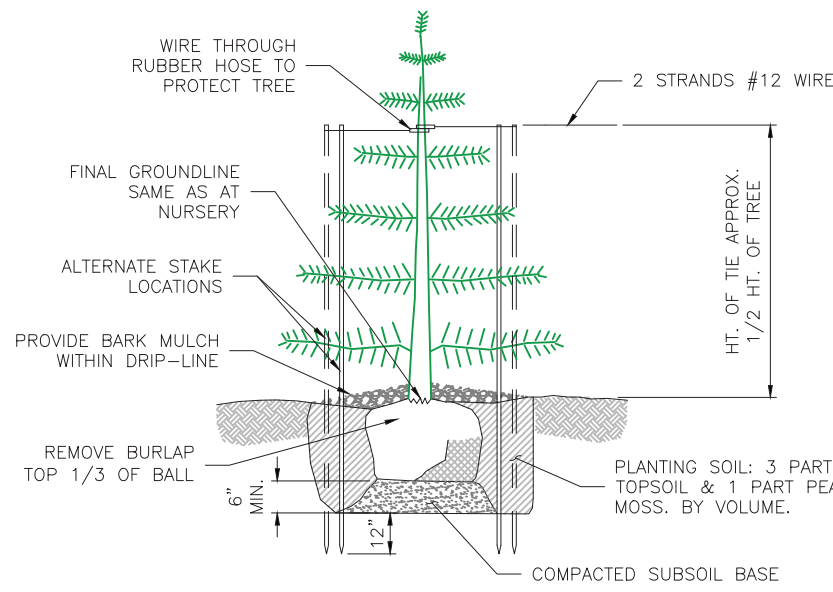


1 LANDSCAPE PLAN
LS-1 SCALE: 1/8" = 1'-0"

PLANT SCHEDULE

TYPE	QUANTITY	SCIENTIFIC NAME	COMMON NAME	SIZE
A	9	JUNIPER CHINENSIS COLUMNARIS	JUNIPER	6' TALL

- NOTES:
1. ACTUAL LANDSCAPE ELEMENTS AND LOCATIONS TO BE DETERMINED DURING THE CURRENT GROWING SEASON.
 2. AT THE TIME OF PLANTING, BUFFER PLANT (I.E., JUNIPERS) SHOULD HAVE A MINIMUM OF (4) FEET IN HEIGHT.
 3. BUFFER PLANT/S SHALL REACH AT LEAST SIX (6) FEET IN HEIGHT WITHIN TWO (2) YEARS OF PLANTING.



2 DETAIL-TREE PLANTING
LS-1 SCALE: N.T.S.

EXHIBIT E

T-Mobile

1400 OPUS PLACE, SUITE 700
DOWNERS GROVE, IL 60515
PHONE:
FAX:

KCS CORPORATION
CONSULTING ENGINEERS
ILLINOIS DESIGN FIRM REGISTRATION NO.: 184.002139
1125 REMINGTON RD., SCHAUMBURG, IL 60173
PHONE: 847-490-8200; FAX: 847-490-8225
www.kscorp.com

THIS DRAWING IS COPYRIGHTED AND IS THE SOLE PROPERTY OF KCS CORPORATION. IT IS PRODUCED FOR USE BY OWNER AT THE BELOW REFERENCED PROJECT ONLY. REPRODUCTION AND OTHER USE OF THIS DRAWING OR THE INFORMATION CONTAINED HEREIN WITHOUT THE WRITTEN PERMISSION OF KCS CORPORATION IS PROHIBITED.

LICENSED PROFESSIONAL ENGINEER
SEEMESH M. SETHI
0062-051290
STATE OF ILLINOIS
SIGNATURES:
DATE: 12/19/24 EXPIRES: 11/30/25

REV.	DESCRIPTION	DATE
0	ISSUED FOR PERMIT	12/19/24
B	ISSUED FOR REVIEW	10/1/24
A	ISSUED FOR REVIEW	8/9/24

CH95363A
WASHINGTON & 75TH WT-REPLACEMENT
1301 CLYDE DRIVE, NAPERVILLE, IL 60565

Drawing Title:
LANDSCAPE PLAN

Project Number:	Drawn by: PA
Client Project Number:	Checked by:
Scale:	Approved by: MS
Drawing Number	Date:

LS-1