

SUBCONTRACTOR NOTES

- A. PROVIDE WEATHER BARRIER OVER ALL EXTERIOR SHEATHING PRIOR TO THE INSTALLATION OF ANY EXTERIOR FINISH MATERIAL.
- B. INSTALL PER MANUFACTURER'S SPECIFICATIONS AND PROVIDE ALL MANUFACTURER'S ACCESSORIES TO FULLY FLASH AND COUNTER-FLASH AT ALL WINDOWS, DOORS, AND EXTERIOR PENETRATIONS.
- C. PROVIDE A WEATHER TIGHT BARRIER AT ALL SURFACES.
- D. COORDINATE FLASHING WITH WINDOW, DOOR, VENT, ETC. MANUFACTURER'S FOR A WEATHER TIGHT SEAL AT ALL OPENINGS.
- E. TAPE FLASH AROUND ALL OPENINGS AND ON WALL JOINTS PER MANUFACTURER REQUIREMENTS.



9550 W.Higgins Rd. 170
Rosemont, IL 60018

G&G PEDIATRIC DENTISTRY &
ORTHO

1108 EAST OGDEN AVENUE
NAPERVILLE, IL 60563

SEAL:

DISCLAIMER: All drawings are proprietary and the exclusive property of our company. This/These print(s) shall not be shared, copied or reproduced without expressed permission of our company. This print is loaned in confidence and subject to return upon request by our company.

No.	Description	Date
	ISSUED FOR PERMIT	XX/XX/2022

EXTERIOR SCHEDULES

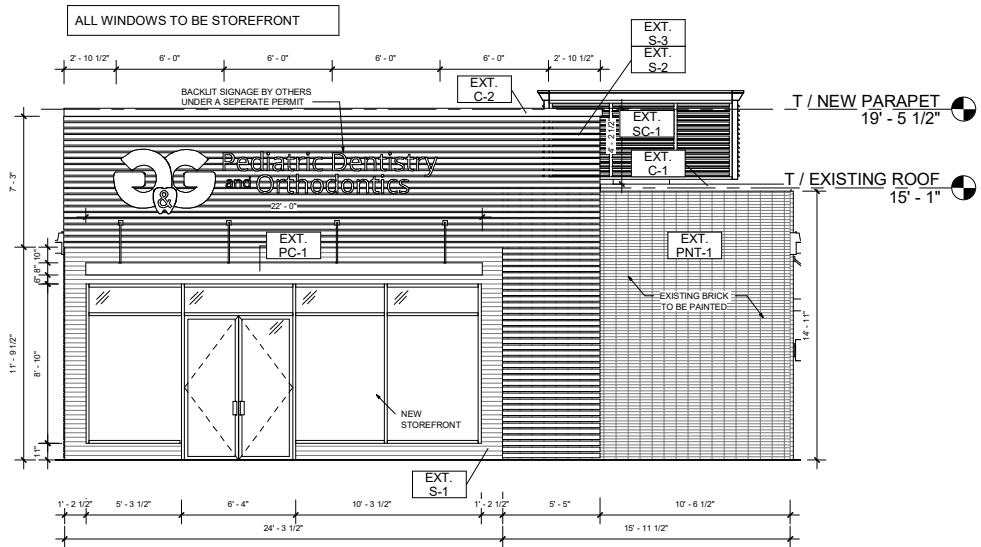
Project number #10722

A1-3

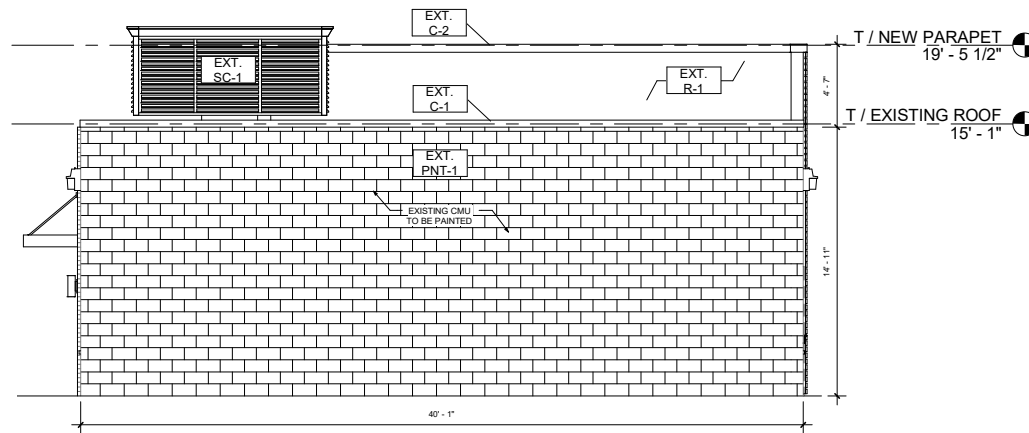
Scale 12" = 1'-0"

EXTERIOR FINISH SCHEDULE

TAG	DESCRIPTION	MFG.	MODEL/ FINISH	INSTALL	LOCATION	REMARKS
EXT. C-1	COPING	PAC-CLAD	PAC TITE COPING TAPERED; COLOR: BLACK ALUMINUM		AT PARAPET WALLS	INSTALL WITH EXT. PNT-1
EXT. C-2	COPING	PAC-CLAD	PAC TITE COPING TAPERED; COLOR: BONE WHITE		AT PARAPET WALLS	INSTALL WITH EXT. S-2
EXT. PC-1	PREFAB CANOPY	MERRILLVILLE AWNING CO.	METAL FLAT AWNING/ CANOPY PER ELEVATION ; FINISH: BLACK		WHERE NOTED IN EXTERIOR ELEVATIONS	
EXT. PNT-1	PAINT	BENJAMIN MOORE	COLOR MATCH SHERWIN WILLIAMS BLOCK FOX SW 7020: PROVIDE Prime: Ultra Spec Masonry Int/Ext 100% Acrylic Sealer Primer (608) 1st Coat: Aura Exterior Paint Low Lustre (634) 2nd Coat: Aura Exterior Paint Low Lustre (634)		WHERE NOTED IN EXTERIOR ELEVATIONS	
EXT. R-1	TPO ROOFING	FIRESTONE	PROFILE: FIRESTONE TPO SELF ADHERED MEMBRANE		ROOF	
EXT. S-1	SIDING	NICHIHA	VINTAGEWOOD WOOD SERIES; AWP3030; COLOR: CEDAR		WHERE NOTED IN EXTERIOR ELEVATIONS	
EXT. S-2	SIDING	LONGBOARD	PRIVACY BEAM SIDING; PROFILE: 1X3; SINGLE POST FLOATING SYSTEM; FINISH: BONE WHITE		WHERE NOTED IN EXTERIOR ELEVATIONS	
EXT. S-3	FIBER CEMENT SIDING	HARDIE BOARD	HARDIE ARCHITECTURAL PANELS, FINE SAND; FINISH: IRON GRAY		BEHIND S-2 LONGBOARD SCREEN METAL PANELS	
EXT. SC-1	RTU SCREEN	CITYSCAPES	ENVISOR HVAC SCREENING VERTICAL WALL W/ 4 0 CORRUGATED HORIZONTAL PANELS COLOR: ALABASTER		AROUND RTUS, SEE ROOF PLAN	



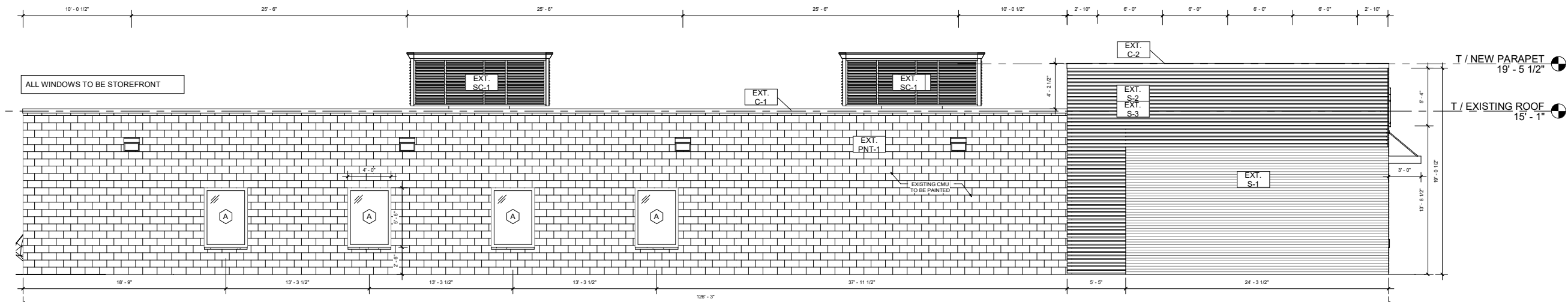
1 FRONT - EXTERIOR ELEVATION
3/16" = 1'-0"



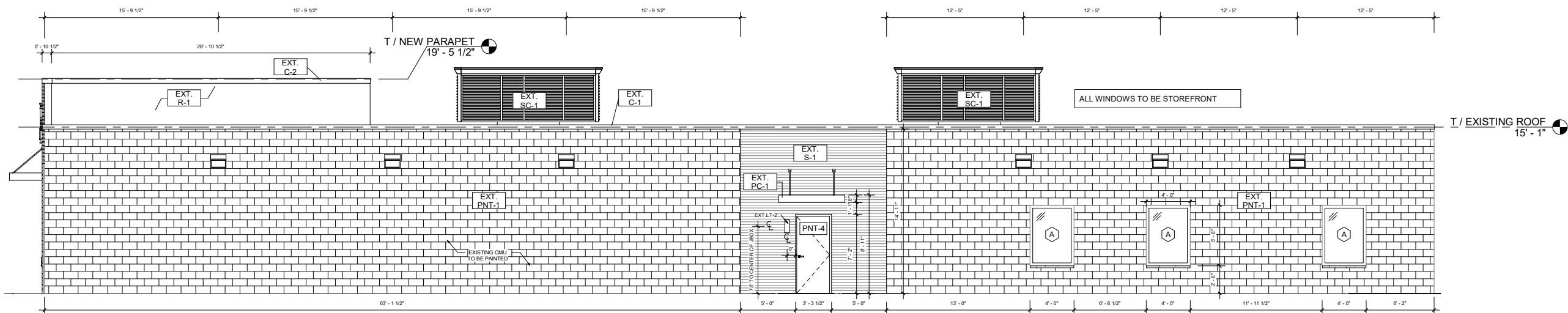
2 BACK - EXTERIOR ELEVATION
3/16" = 1'-0"

ALL STOREFRONT TO BE:

- TUBELITE VERSATHERM STOREFRONT MULTIPANE, 2"X 4-1/2" THERMALLY BROKEN MULLIONS, 1" INSULATED GLASS UNIT (AIR), LOW-E, 0.38 UVALUE, DOUBLE PANED SHGC-33%, BLACK SPACERS AND TRIM OR EQUAL.
- STOREFRONT TO HAVE A DARK BRONZE/BLACK
- VERIFY ALL EXISTING OPENINGS (INCLUDING ARCH) DIMENSION IN FIELD PRIOR TO ORDERING STOREFRONT



3 EAST SIDE - EXTERIOR ELEVATION
3/16" = 1'-0"



4 WEST SIDE - EXTERIOR ELEVATION
3/16" = 1'-0"



9550 W. Higgins Rd. 170
Rosemont, IL 60018

G&G PEDIATRIC DENTISTRY &
ORTHO

1108 EAST OGDEN AVENUE
NAPERVILLE, IL 60563

SEAL:

DISCLAIMER: All drawings are proprietary and the exclusive property of our company. This/These print(s) shall not be shared, copied or reproduced without expressed permission of our company. This print is loaned in confidence and subject to return upon request by our company.

No.	Description	Date
2	CONCEPT PRESENTATION	04/28/2022
3	DD-1 PRESENTATION	05/27/2022

EXTERIOR ELEVATIONS

Project number #10722

A1-4

Scale 3/16" = 1'-0"

FLOOR PLAN KEY

	EXISTING WALLS
	NEW WALLS
	N.I.C.

KEY NOTES

- 1 INOPERABLE STOREFRONT DOOR, SEALED, CAPPED, & HARDWARE REMOVED.
- 2 ADA SIDE APPROACH
- 3 PROVIDE NEW OPERABLE LOUVERED VENT INSERT AT EXISTING GLASS BLOCK WINDOW. LOUVERED VENT TO MATCH VENT AT ADJACENT GLASS BLOCK WINDOW.
- 4 NEW CASEWORK. SEE MILLWORK DRAWINGS FOR MORE INFORMATION. PROVIDE FIRE-TREATED BLOCKING.
- 5 PROVIDE FIRE-TREATED BLOCKING IN WALLS AND CEILING AS REQUIRED FOR X-RAY ARMS, AND PAN-CEPHIC/CT IMAGING EQUIPMENT. CONFIRM REINFORCEMENT REQUIREMENTS WITH EQUIPMENT MANUFACTURER
- 6 PROVIDE FIRE-TREATED BLOCKING IN WALLS AND CEILING AS REQUIRED FOR ALL WALL-HUNG ACCESSORIES, INCLUDING BUT NOT LIMITED TO CABINETS, GRAB BARS, MIRRORS, & SINKS.
- 7 PATCH PERIMETER EXTERIOR FURRING DRYWALL AND INSULATION AS REQUIRED AFTER MEP INSTALLATIONS AND DEMOLITION SCARRING. SEE WALL TYPE A FOR MINIMUM STANDARDS.

SUBCONTRACTOR NOTES FOR NEW CONSTRUCTION

- A. SUBCONTRACTORS TO VERIFY ALL EXISTING DIMENSIONS IN FIELD PRIOR TO CONSTRUCTION. NOTIFY ARCHITECT OF DISCREPANCIES PRIOR TO COMMENCEMENT OF DEMOLITION/ CONSTRUCTION.
- B. IF EXISTING BUILDING ELEMENTS WHICH WOULD OBSTRUCT THE PROPER EXECUTION OF THE DESIGN INTENT ARE FOUND, BUT ARE NOT SPECIFIED IN THE CONSTRUCTION DOCUMENTS, CONTACT INTERIOR DESIGNER/ARCHITECT & WAIT FOR INSTRUCTION.
- C. ALL BUILDING COMPONENTS & FINISHES WHICH ARE TO REMAIN IN PLACE SHALL BE PROTECTED FROM DAMAGE AND, IF DAMAGED, SHALL BE REPAIRED OR REPLACED AT NO COST TO THE OWNER.
- D. DRYWALL CONSTRUCTION PARTITIONS, BULKHEADS, JOINTS, & HOLES TO BE TAPED & SANDED FOR FINISHING TO LIKE-NEW CONDITION.
- E. ANY WOOD FRAMING, BLOCKING, & PLYWOOD SHALL BE FIRE RETARDANT TREATED WOOD.
- F. SUBCONTRACTORS SHALL INSTALL EMERGENCY LIGHTING, SPRINKLERS, EXIT SIGNS, & FIRE EXTINGUISHERS AS REQUIRED BY THE LOCAL FIRE MARSHAL.
- G. SUBCONTRACTORS SHALL REVIEW & UNDERSTAND PROJECT REQUIREMENTS & DRAWINGS FOR NEW CONSTRUCTION WORK & VISIT SITE TO DETERMINE EXTENT OF DEMOLITION PRIOR TO PERFORMING ANY WORK. SUBCONTRACTORS SHALL NOTIFY ARCHITECT IMMEDIATELY OF ANY DISCREPANCIES.
- H. SUBCONTRACTORS SHALL COORDINATE WITH THE BUILDING OWNER THE MEANS OF TRASH REMOVAL FOR DEMOLITION AS WELL AS DURING BUILD OUT. SUBCONTRACTORS WILL BE RESPONSIBLE FOR OBTAINING ALL REQUIRED DEMOLITION & CONSTRUCTION PERMITS, INSPECTIONS, & APPROVALS & COMPLY WITH ALL STANDARDS OF CONSTRUCTION.
- I. SUBCONTRACTORS SHALL NOTE THAT UPON INSPECTION OF SITE, EXISTING CONDITIONS, & ACCEPTANCE OF BID, SUBCONTRACTORS ACCEPT RESPONSIBILITY TO COMPLETE ALL WORK AS DETAILED IN THE CONSTRUCTION DOCUMENTS. CHANGE ORDERS FOR ADDITIONAL WORK WILL NOT BE PERMITTED UNLESS THE WORK IS NOT CALLED OUT IN THE DOCUMENTS OR A HIDDEN CONDITION EXISTS THAT PREVENTS EXECUTING THE WORK AS DETAILED IN THE DRAWINGS. APPROVAL OF ADDITIONAL COST & SCOPE OF WORK TO BE OBTAINED FROM PROJECT MANAGER PRIOR TO EXECUTING WORK.
- J. ALL PENETRATIONS THROUGH FIRE RATED & SOUND RATED WALLS SHALL BE SEALED WITH FIRE CAULK MATERIAL.
- K. SUBMITTALS ARE REQUIRED ON ALL SUBCONTRACTOR SUPPLIED ITEMS TO APEX.
- L. ALL MATERIAL & LABOR SHALL BE WARRANTED FOR A PERIOD OF ONE YEAR FROM THE DATE OF THE CERTIFICATE OF OCCUPANCY.
- M. ALL WORK SHALL BE COMPLETED IN ACCORDANCE WITH APPLICABLE CODES AS INTERPRETED BY THE GOVERNING AUTHORITIES.
- N. SUBCONTRACTORS SHALL PROVIDE SUFFICIENT ATTACHMENT & IN-WALL/HIDDEN BLOCKING REQUIRED FOR WALL-HUNG ITEMS, EQUIPMENT, & OTHER CONSTRUCTION.
- O. SUBCONTRACTORS SHALL COORDINATE THEIR WORK WITH ANY OTHER SUBCONTRACTORS ON THE JOB SO AS TO PREVENT CONFLICTS DURING CONSTRUCTION. ADDITIONAL WORK CAUSED BY A LACK OF COORDINATION BETWEEN SUBCONTRACTORS SHALL BE AT THE SUBCONTRACTORS EXPENSE.
- P. IF NOT ALREADY EXISTING, PROVIDE VAPOR BARRIERS AT ALL EXISTING & EXPOSED EXTERIOR WALLS OR ATTIC INSULATION, OR ANY OTHER AREA THAT NEEDS IT BY CODE/BEST PRACTICE. IF VAPOR BARRIERS ARE DAMAGED DURING CONSTRUCTION, IT SHOULD BE REPAIRED AT THE SUBCONTRACTORS EXPENSE.
- Q. REFER TO THE A5 SERIES SHEETS FOR FULL SCHEDULES.
- R. IN SPRINKLERED BUILDINGS THE CLEARANCE IS 18" FROM THE CEILING AND NON-SPRINKLERED BUILDING THE CLEARANCE IS 24". NOTHING SHALL BE STORED/SHELVING INSTALLED ABOVE THIS POINT.
- S. AT BATHROOM WALLS WITH TILED FINISH (DESCRIBED ON PLAN), PROVIDE 1/2" WATERPROOF GYPSUM BOARD ON ROOM SIDE WITH STAGGERED JOINTS. AT ROOM WITH HOSE BIBS PROVIDE CEMENT BOARD UP 48" AFF MIN.



G&G PEDIATRIC DENTISTRY & ORTHO

1108 EAST OGDEN AVENUE
NAPERVILLE, IL 60563

CUSTOMER SIGN-OFF OF LAYOUT AND DESIGN

APPROVED AS SHOWN
 APPROVED WITH CHANGES

CUSTOMER NAME: _____

DATE: _____

SEAL: _____

SET IN PROGRESS
NOT FOR CONSTRUCTION

DISCLAIMER: All drawings are proprietary and the exclusive property of our company. This/These print(s) shall not be shared, copied or reproduced without expressed permission of our company. This print is loaned in confidence and subject to return upon request by our company.

No.	Description	Date
1	KICK OFF PRESENTATION	04/08/2022

FLOOR PLAN & NOTES

Project number #10722

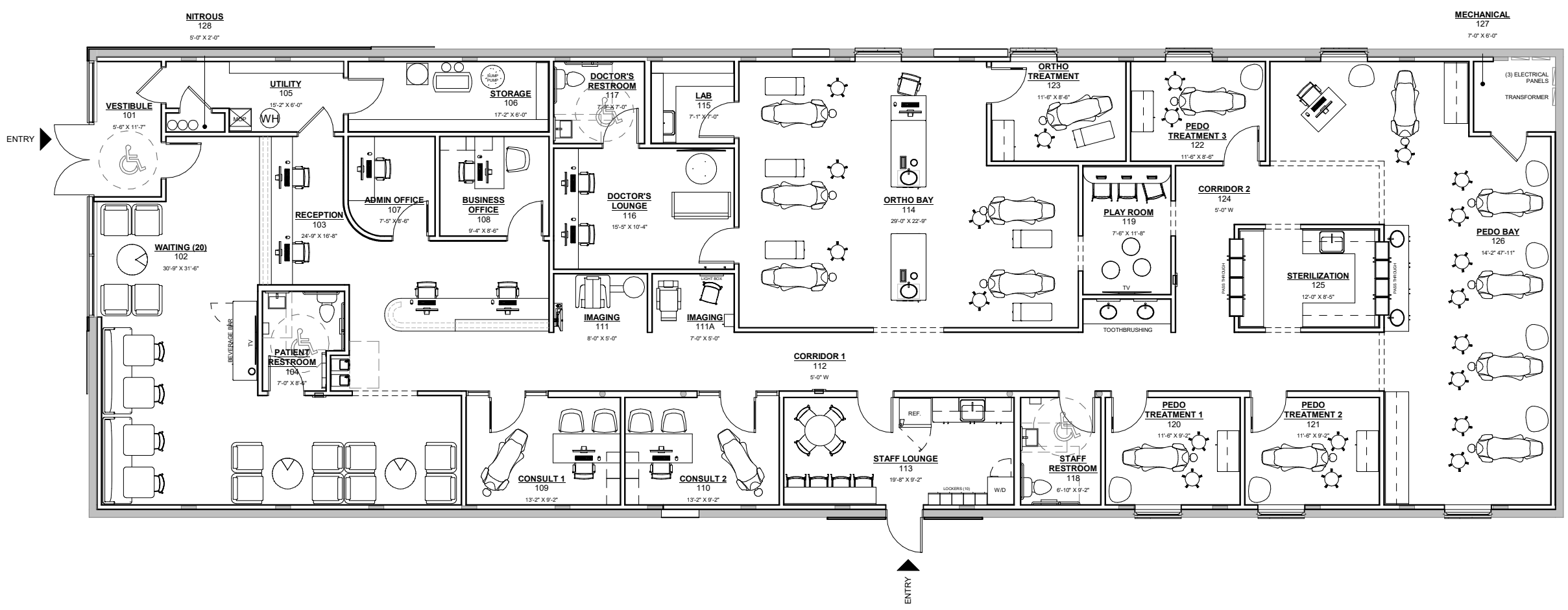
Date 03/01/2022

Drawn by NM

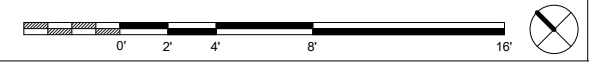
Checked by MMS/JB

A2-3

Scale As indicated



1 FLOOR PLAN - 1ST FLOOR
3/16" = 1'-0"
4834 SF





apex
DESIGN > BUILD
9550 W. Higgins Rd. 170
Rosemont, IL 60018

G&G PEDIATRIC DENTISTRY &
ORTHO

1108 EAST OGDEN AVENUE
NAPERVILLE, IL 60563

SEAL:

DISCLAIMER: All drawings are proprietary and the exclusive property of our company. This/These print(s) shall not be shared, copied or reproduced without expressed permission of our company. This print is loaned in confidence and subject to return upon request by our company.

No.	Description	Date

**EXTERIOR
RENDERINGS**

Project number #10722

GA0-1

Scale



ULTRA SPEC[®] MASONRY INTERIOR/EXTERIOR 100% ACRYLIC SEALER 608

Features

- Reduces the porosity of masonry surfaces.
- Provides excellent surface adhesion.
- Tintable.
- High alkali resistant – up to pH-13.

Recommended For

- For commercial and residential applications
- For application to new or previously painted masonry and plaster surfaces including; tilt-up concrete construction, stucco surfaces and block construction.

General Description

Ultra Spec[®] Masonry Interior/Exterior 100% Acrylic Sealer is designed to penetrate and seal the surface of new or previously painted masonry surfaces providing the proper foundation for subsequent finish coats. It can be applied to masonry and plaster surfaces with pH levels as high as 13.

Limitations

- Do not apply when air and surface temperatures are below 50 °F (10 °C).

Product Information

Colors — Standard:

White (01), Clear (00)

(White may be tinted with up to 2.0 fl. oz. of Benjamin Moore[®] Gennex[®] colorants per gallon.)

— Tint Bases:

Not available

— Special Colors:

Contact your Benjamin Moore representative

Certifications & Qualifications:

VOC compliant in all regulated areas

- Qualifies for LEED[®] v4 Credit
- Qualifies for CHPS low emitting credit (Collaborative for High Performance Schools)
- CDPH v1 Emission Certified
- Master Painters Institute MPI # 3, 3 X-Green[™]
- Water vapor permeance (breathability) ASTM D1653: 46.5 Perms

Technical Assistance

Available through your local authorized independent Benjamin Moore retailer. For the location of the retailer nearest you, call 1-866-708-9180 or visit www.benjaminmoore.com

Technical Data[◇]

White

Vehicle Type	100% Acrylic Latex	
Pigment Type	N/A	
Volume Solids	17.8%	
Coverage per Gallon at Recommended Film Thickness	200 – 400 Sq. Ft.	
Recommended Film Thickness	– Wet	5.3 mils
	– Dry	0.95 mils
Depending on surface texture and porosity. Be sure to estimate the right amount of paint for the job. This will ensure color uniformity and minimize the disposal of excess paint.		
Dry Time @ 77 °F (25 °C) @ 50% RH	– To Touch	1 Hour
	– To Recoat	4 Hours
Painted surfaces can be washed after two weeks. High humidity and cool temperatures will result in longer dry, recoat and service times.		
Dries By	Evaporation, Coalescence	
Viscosity	94 ± 2 KU	
Flash Point	None	
Gloss / Sheen	Semi-Gloss (45 - 65 @ 60°) <small>Gloss/Sheen will vary due to surface texture and porosity</small>	
Surface Temperature at Application	– Min.	50 °F
	– Max.	90 °F
Thin With	Clean Water	
Clean Up Thinner	Clean Water	
Weight Per Gallon	8.5 lbs	
Storage Temperature	– Min.	40 °F
	– Max.	90 °F

Volatile Organic Compounds (VOC)

46 Grams/Liter .67 Lbs./Gallon

[◇] Reported values are for White. Contact Benjamin Moore for values of other bases or colors

Surface Preparation

Surface must be dry, clean, and sound; free of chalk, peeling paint, form oils, efflorescence, and mildew. Remove chalk, surface deposits, and loose or scaling paint by scraping, sanding, and preferably power washing.

Glossy areas should be dulled. Un-weathered areas must be power washed or scrubbed with a detergent solution and rinsed to remove surface salts that can interfere with adhesion. Loose, sandy masonry should be hosed down thoroughly to remove surface particles and allowed to dry.

For masonry that has been allowed to cure for a minimum of 7 days under normal drying conditions and has a pH of 13 or less may be sealed with Ultra Spec® Masonry Interior/Exterior 100% Acrylic Sealer (608) prior to finishing.

A common exterior paint failure on masonry construction is peeling and scaling, often caused by painting over chalk deposits. The most practical and efficient way to remove this substance is by power washing. Multiple coats of paint that are in an advanced state of deterioration or prior applications of cement based coatings must be removed to a sound substrate.

WARNING! If you scrape, sand or remove old paint, you may release lead dust. **LEAD IS TOXIC. EXPOSURE TO LEAD DUST CAN CAUSE SERIOUS ILLNESS, SUCH AS BRAIN DAMAGE, ESPECIALLY IN CHILDREN. PREGNANT WOMEN SHOULD ALSO AVOID EXPOSURE.** Wear a NIOSH-approved respirator to control lead exposure. Carefully clean up with a HEPA vacuum and a wet mop. Before you start, find out how to protect yourself and your family by contacting the National Lead Information Hotline at 1-800-424-LEAD or log on to www.epa.gov/lead.

Primer/Finish Systems

New surfaces should be fully primed, and previously painted surfaces may be primed or spot primed as necessary.

Rough or Pitted Masonry:

Primer: Ultra Spec® Masonry Interior/Exterior 100% Acrylic Sealer (608)

Finish: Appropriate Benjamin Moore® exterior house paint, or use Ultra Spec® Masonry Elastomeric Waterproof Coating - Low Lustre (360), Flat (359)

Smooth Poured or Precast Concrete & Fiber Cement Siding:

Primer: Ultra Spec® Masonry Interior/Exterior 100% Acrylic Sealer (608)

Finish: Appropriate Benjamin Moore® exterior house paint, or use Ultra Spec® Masonry Elastomeric Waterproof Coating — Low Lustre (0360) or Flat (0359)

Cured Plaster:

Primer: Ultra Spec® Masonry Interior/Exterior 100% Acrylic Sealer (608)

Finish: Appropriate Benjamin Moore® finish coat

Repaint, All Substrates: Prime bare areas with the primer recommended for the substrate above.

Application

Do not apply when air and surface temperatures are below 50 °F (10 °C).

Brush: Stir thoroughly and apply generously as received in the container with a good quality synthetic brush. Work into crevices to ensure adequate penetration and sealing.

Roller: Stir thoroughly and apply generously as received in the container with a good quality long-nap roller. Work into crevices to ensure adequate penetration and sealing.

Spray, Airless: Fluid Pressure — 1,000 to 2,000 PSI;

Tip—.013-.017 Orifice

Thinning/Clean up

Thinning is unnecessary, but if required to obtain desired application properties, a small amount of clean water may be added. Never add other paints or solvents. Clean up with warm soapy water. Spray equipment should be given a final rinse with mineral spirits to prevent rusting.

USE COMPLETELY OR DISPOSE OF PROPERLY. Dry, empty containers may be recycled in a can recycling program. **Local disposal requirements vary; consult your sanitation department or state-designated environmental agency for more information on disposal options.**

Environmental, Health & Safety Information

Use only with adequate ventilation. Do not breathe spray mist or sanding dust. Ensure fresh air entry during application and drying. Avoid contact with eyes and prolonged or repeated contact with skin. Avoid exposure to dust and spray mist by wearing a NIOSH approved respirator during application, sanding and clean up. Follow respirator manufacturer's directions for respirator use. Close container after each use. Wash thoroughly after handling.



WARNING Cancer and Reproductive Harm—
www.P65warnings.ca.gov

FIRST AID: In case of eye contact, flush immediately with plenty of water for at least 15 minutes; for skin, wash thoroughly with soap and water. If symptoms persist, seek medical attention. If you experience difficulty breathing, leave the area to obtain fresh air. If continued difficulty is experienced, get medical attention immediately.

WARNING: This product contains isothiazolinone compounds at levels of <0.1%. These substances are biocides commonly found in most paints and a variety of personal care products as a preservative. Certain individuals may be sensitive or allergic to these substances, even at low levels.

IN CASE OF SPILL: — Absorb with inert material and dispose of as specified under "CleanUp".

**KEEP OUT OF REACH OF CHILDREN
PROTECT FROM FREEZING**

**Refer to Safety Data Sheet for additional
health and safety information**



AURA®

Waterborne Exterior Paint – Low Lustre N634

Features

- Excellent fade resistance and gloss retention
- Proprietary Color Lock® Technology for unparalleled color depth
- Substantial film formation starting with the very first coat
- Breathable coating less prone to blistering, providing long-term durability
- Low temperature application down to 35 °F extends the painting season
- Provides a mildew-resistant coating
- Limited Lifetime Warranty
- Engineered with Gennex® Color Technology

Recommended For

Recommended for exterior use on wood, fiber cement board, hard board, vinyl and aluminum siding, shakes, unglazed brick, concrete, stucco, cinder block and primed metal.

General Description

A super premium quality, 100% acrylic exterior low lustre finish. AURA® Exterior combines the advantages of our proprietary Color Lock® Technology, Gennex® Color Technology, and latest resin technology to provide the ultimate exterior coating. Suitable for a variety of exterior substrates to provide a durable long lasting finish with rich colors that resist fading and stand up to rain, snow, wind, and UV damage.

Limitations

- Do not apply when air and surface temperatures are below 35 °F (1.6 °C).
- For Wind-Driven Rain over smooth and stable masonry only (non-elastomeric use). Follow primer/finish instructions.

Product Information

Standard Colors	White (01)
Tint Bases	1X, 2X, 3X & 4X
Colorant System	Gennex® Waterborne Colorants
Certifications & Qualifications: VOC compliant in all regulated areas The following results are based on independent, third-party laboratory testing: Passes Wind Driven Rain Test (< 0.2) ASTM D6904 1 coat Ultra Spec® Masonry Sealer 608 or Primer N609 1 or 2 coats AURA® Exterior Low Lustre N634 Passes Alkali Resistance Test (no effect) ASTM D1308 1 coat Ultra Spec® Masonry Sealer 608 or Primer N609 1 coat AURA® Exterior Low Lustre N634 Passes Conical Mandrel Flexibility Test (no cracking) ASTM D522 Passes Mildew, Mold Resistance Test (no growth) ASTM D3273/D3274 ASTM D1653 – Water Vapor Transmission Properties – 31 perms ASTM D2370 Tensile Properties: Peak Tensile Strength, (psi) 422 Elongation at Break, (%) 151	
LIMITED LIFETIME WARRANTY: Benjamin Moore & Co. warrants that this product when used in accordance with the label instructions, will not: 1. blister from properly prepared and primed surfaces, 2. peel from properly prepared and primed surfaces, and 3. wear down or weather to expose the previously painted surface. This warranty shall be effective for so long as you reside in your home and is made to the original residential consumer paint purchaser. This warranty is non-transferable. If this product fails to perform as explained above when used according to label instructions within the warranty period, Benjamin Moore & Co. will, upon presentation of proof of purchase (original sales receipt), provide an equivalent or comparable product at no charge. Since we have no control over surface preparation or application, THIS LIMITED LIFETIME WARRANTY DOES NOT INCLUDE THE COST OF LABOR FOR APPLICATION OF PAINT. BENJAMIN MOORE SHALL IN NO EVENT BE LIABLE FOR INDIRECT, SPECIAL, INCIDENTAL OR CONSEQUENTIAL DAMAGES. SOME STATES DO NOT ALLOW THE EXCLUSION OF INCIDENTAL OR CONSEQUENTIAL DAMAGES, SO THE LIMITATIONS OR EXCLUSIONS CONTAINED IN THE ABOVE WARRANTY MAY NOT APPLY TO YOU. This warranty gives you specific legal rights; you may also have other rights which vary state to state.	
Technical Assistance Available through your local authorized independent Benjamin Moore retailer. For the location of the retailer nearest you, call 1-866-708-9180 or visit www.benjaminmoore.com	

Technical Data		Base 1
Vehicle Type	Proprietary 100% Acrylic	
Pigment Type	Titanium Dioxide	
Volume Solids	45.6 %	
Coverage per Gallon at Recommended Film Thickness	250 – 350 Sq. Ft.	
Recommended Film Thickness	– Wet	4.6 – 6.4 mils
	– Dry	2.1 – 2.9 mils
High Build System Coverage: 160 – 265 sq. ft. 6-10 mils wet film thickness.		
Depending on surface texture and porosity. Be sure to estimate the right amount of paint for the job. This will ensure color uniformity and minimize the disposal of excess paint.		
Dry Time @ 77 °F (25 °C) @ 50% RH	– To Touch	1 Hour
	– To Recoat	4 Hours
Painted surfaces can be washed after two weeks. High humidity and cool temperatures will result in longer dry, recoat and service times.		
Dries By	Evaporation, Coalescence	
Viscosity	100 ± 5 KU	
Flash Point	None	
Gloss / Sheen	Low Lustre (9 – 15 @ 60°)	
Surface Temperature at Application	– Min.	35 °F
	– Max	100 °F
Thin With	See Chart	
Clean Up Thinner	Clean Water	
Weight Per Gallon	11.4 lbs	
Storage Temperature	– Min.	40 °F
	– Max	90 °F
Volatile Organic Compounds (VOC)		
46.8 Grams / Liter 0.39 LBS / Gallon		

Surface Preparation

Surfaces must be clean and free of grease, wax, and mildew. Remove any chalk and loose or scaling paint. If previously coated with cement-base waterproofing paints, clean by sandblasting. Glossy surfaces must be dulled. Un-weathered areas such as eaves, ceilings, and overhangs should be washed with a detergent solution and/or rinsed with a strong stream of water from a garden hose to remove contaminants that can interfere with proper adhesion. Stains from mildew must be removed by cleaning with Benjamin Moore® Clean (N318) prior to coating the surface. **Caution:** Refer to the (N318) Clean technical data and material safety data sheets for instructions on its proper use and handling. For metal surfaces, remove rust. Wipe down with paint thinner to remove surface oils.

Difficult Substrates: Benjamin Moore offers a number of specialty primers for use over difficult substrates such as bleeding woods, grease stains, crayon markings, hard glossy surfaces, or other substrates where paint adhesion or stain suppression is a particular problem. Your Benjamin Moore® retailer can recommend the right problem-solving primer for your special needs.

WARNING! If you scrape, sand or remove old paint, you may release lead dust. LEAD IS TOXIC. EXPOSURE TO LEAD DUST CAN CAUSE SERIOUS ILLNESS, SUCH AS BRAIN DAMAGE, ESPECIALLY IN CHILDREN. PREGNANT WOMEN SHOULD ALSO AVOID EXPOSURE. Wear a NIOSH-approved respirator to control lead exposure. Carefully clean up with a HEPA vacuum and a wet mop. Before you start, find out how to protect yourself and your family by contacting the National Lead Information Hotline at 1-800-424-LEAD or log on to www.epa.gov/lead

Primer/Finish Systems

AURA® Waterborne Exterior Low Lustre is self priming on most properly prepared substrates, including: wood, fiber cement board, hardboard, nonferrous metals and cured masonry surfaces. On bare substrates two coats are required; previously painted surfaces can be finished with 1 or 2 coats.

Special Note: For certain deep colors, a tinted primer must be used to achieve maximum hide and the desired topcoat color. Consult your retailer.

Wood and engineered wood products:

Primer/Finish: 1 or 2 coats AURA® Waterborne Exterior Paint Low Lustre (N634)

Bleeding Type Woods, (Redwood and Cedar):

Primer: Fresh Start® Exterior Deck & Siding Primer (094) or 1-2 coats of Fresh Start® High-Hiding All Purpose (046) may be used.

Finish: 1 or 2 coats AURA® Waterborne Exterior Low Lustre (N634)

Hardboard Siding, Bare or Factory Primed:

Primer/Finish: 1 or 2 coats AURA® Waterborne Exterior Low Lustre (N634)

Vinyl Siding & Vinyl Composite

In most cases, a primer is not necessary. Only areas of pitted and porous vinyl siding must be primed. In these cases, we recommend Fresh Start® High-Hiding All Purpose Primer (046)

Colors that are safe for use on vinyl siding: Do not paint vinyl with any color darker than the original color or having a Light Reflective Value (LRV) of less than 55 unless it is in the Benjamin Moore approved Colors for Vinyl palette and comply with the specific vinyl manufacturer guidelines when making the color selection and painting. Otherwise, the color will absorb more heat, possibly causing the siding to warp, resulting in additional repairs and expenses.

Rough or Pitted Masonry: Poured and precast concrete and block construction should be allowed to cure for at least 30 days. New masonry only needs to be cured for 7 days when using Ultra Spec® Masonry Interior / Exterior 100% Acrylic Masonry Sealer (608). All surfaces must be thoroughly brushed with stiff fiber bristles to remove loose particles.

Primer: Ultra Spec® Masonry Interior/Exterior Hi-Build Block Filler (571)

Finish: 1 or 2 coats AURA® Waterborne Exterior Low Lustre (N634)

Poured or Pre-cast Concrete and Fiber Cement Siding:

Primer/Finish: 1 or 2 coats AURA® Waterborne Exterior Low Lustre (N634)

Masonry, Weathered and Unpainted, Soft with Age (Including Unglazed

Brick): Remove any loose, sandy masonry by dry brushing.

Primer: Ultra Spec® Masonry Interior / Exterior 100% Acrylic Masonry Sealer (608)

Finish: 1 or 2 coats AURA® Waterborne Exterior Low Lustre (N634)

Ferrous Metal (Steel and Iron):

Primer: Ultra Spec® HP Acrylic Metal Primer (HP04) or Super Spec HP® Alkyd Metal Primer (P06)

Finish: 1 or 2 coats AURA® Waterborne Exterior Low Lustre (N634)

Non-Ferrous Metal (Galvanized & Aluminum): All new metal surfaces must be thoroughly cleaned with Corotech® Oil & Grease Emulsifier (V600) to remove contaminants. New shiny non-ferrous metal surfaces that will be subject to abrasion should be dulled with very fine sandpaper or a synthetic steel wool pad to promote adhesion

Primer/Finish: 1 or 2 coats AURA® Waterborne Exterior Low Lustre (N634)

Repaint, All Substrates: Prime bare areas with the primer recommended for the substrate above

Application

Use the same application techniques as you would for any low-VOC compliant coating. Use a Benjamin Moore® Premium roller or Premium extra firm nylon polyester brush for best results. AURA® paint features excellent flow and leveling; it's not necessary to over brush to smooth out brush marks. AURA® dries faster than other acrylic paints; avoid lap marks by not painting in direct sunlight and by coating sections of the surface either down or across the structure to natural breaks, maintaining a wet edge. If your edge begins to dry or you see that you missed a spot and the paint is already setting up, allow it to dry completely before touching up that area. This product can also be sprayed.

Spray, Airless

Pressure: 2,000-3,000

psi; Tip: 0.015-0.017

Thinning/Clean up

Conditioning with Benjamin Moore® 518 Extender may be necessary under certain conditions to adjust open time or spray characteristics.

Add 518 Extender or water - Max of 8 fl. oz. to a gallon paint
Never add other paints or solvents.

* Under normal application conditions AURA® may be sprayed to achieve a high build one coat system over properly prepared substrates that are in good condition. Refer to Surface Preparation / Priming Sections for appropriate priming and preparation information.

High Build System Coverage:

160 – 265 sq. ft. 6-10 mils wet film thickness.

Clean up: Wash painting tools in warm soapy water immediately after use. Spray equipment should be given a final rinse with mineral spirits to prevent rusting.

USE COMPLETELY OR DISPOSE OF PROPERLY. Dry, empty containers may be recycled in a can recycling program. **Local disposal requirements vary; consult your sanitation department or state-designated environmental agency on disposal options.**

Environmental Health & Safety Information

WARNING!

Possible birth defect hazard. Contains, **Carbamic acid, 1H-benzimidazol-2-yl-, methyl ester**, which may cause birth defects based on animal data.

Use only with adequate ventilation. Do not breathe vapors, spray mist or sanding dust. Ensure fresh air entry during application and drying. Avoid contact with eyes and prolonged or repeated contact with skin. May cause allergic skin reaction. Avoid exposure to dust and spray mist by wearing a NIOSH approved respirator during application, sanding and clean up. Follow respirator manufacturer's directions for respirator use. Close container after each use. Wash thoroughly after handling.

WARNING: This product can expose you to chemicals including Titanium dioxide, which are known to the State of California to cause cancer, and Toluene which are known to the State of California to cause birth defects or other reproductive harm.

For more information go to www.P65warnings.ca.gov

WARNING: This product contains isothiazolinone compounds at levels of <0.1%. These substances are biocides commonly found in most paints and a variety of personal care products as a preservative. Certain individuals may be sensitive or allergic to these substances, even at low levels.

FIRST AID: In case of eye contact, flush immediately with plenty of water for at least 15 minutes; for skin, wash thoroughly with soap and water. If symptoms persist, seek medical attention. If you experience difficulty breathing, leave the area to obtain fresh air. If continued difficulty is experienced, get medical attention immediately.

IN CASE OF SPILL – Absorb with inert material and dispose of as specified under **Thinning/Clean up**.

**KEEP OUT OF REACH OF CHILDREN
PROTECT FROM FREEZING**

**Refer to Safety Data Sheet for additional
health and safety information.**