

**GENERAL NOTES: LANDSCAPE**

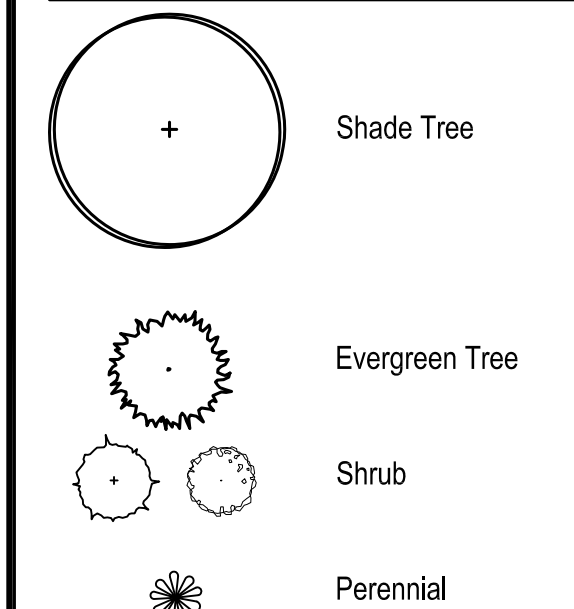
- Notes indicated on grading plans shall pertain to landscape plans. Final grade of planting beds shall be as per grading plan.
- The landscape contractor shall be responsible for making themselves familiar with all underground utilities and structures. Call J. U. L. I. E. at 811 for public utility location a minimum of 48 hours prior to beginning work.
- All landscaping materials shall be installed in accordance with the planting procedures approved by the City Engineer. Required landscaping shall be designated in an area outside of any required utility easements unless a blanket easement has been granted to the City. Trees shall be set back a minimum of ten (10) feet horizontally from utility structures, including, but not limited to, manholes, valve vaults, valve boxes, fire hydrants, transformers and switch cans. Trees shall be set back a minimum of five (5) feet horizontally from sanitary sewer and water services.
- All existing plant material and trees shall be saved and protected unless otherwise noted. Contractor to protect new and existing trees and landscaping from damage and shall restore all areas disturbed as a result of construction.
- Plant material shall be supplied from Illinois nursery stock, shall be dug the planting season it is installed, and shall conform to the American Association of Nurseryman's standards.
- Plant material shall be size and type specified. Substitution of plant material shall be on a case by case basis and approved in writing by the Owner's Representative. In no case shall plant material be smaller than indicated in the plans.
- Do not willfully proceed with plantings as designed when it is obvious that obstructions and/or grade differences exist that may not have been known during the design process. Such conditions shall be immediately brought to the attention of the Owner's Representative.
- All plant material shall be inspected and approved by the Owner's Representative prior to the installation of any and all plant material.
- Plant locations shall be flagged in field with Owner's Rep. Final location of all plant material shall be subject to approval of the Owner's Representative prior to digging any holes. The landscape contractor is responsible for providing Owner's Representative with 48 hour minimum advance notice prior to planting.
- Plants shall be watered on the day they are planted and maintained with watering until final acceptance of the project.
- Apply a pre-emergent as per manufacturer's specification prior to installing mulch at landscape beds and mulch rings.
- Beds and tree rings (6' diameter) shall have 3" of hardwood shredded mulch applied and a 4" deep spade edge at lawn. Trees that are not located in beds, shall have a tree ring.
- Landscape plant material shall be guaranteed for 12 months from final acceptance. Any plant 1/3 dead or more shall be replaced under the guarantee.
- Contractor to prepare landscape beds by roto-tilling 2" of Mushroom Compost into new beds.
- Lawn Seeding shall be under favorable weather conditions, and shall follow dates in IDOT specifications. Turf mixes shall be installed and lawn established at all disturbed areas unless noted otherwise.
- Do not overseed into mulch beds and paving.
- Contractor shall restore all areas disturbed as a result of construction.

**PROJECT**  
**620 N. Washington St.**  
 Naperville, Illinois

**PROJECT TEAM**

**uplandDesign Ltd**  
 Park Planning and Landscape Architecture  
 24042 Lockport St, Plainfield, Illinois 60544  
 815-254-0091 www.uplanddesign.com

**LEGEND**



**Plant List**

QTY	SIZE	BOTANICAL NAME	COMMON NAME
<b>SHADE TREES</b>			
1	2.5" cal.	Celtis occidentalis 'Prairie Sentinel'	Columnar Hackberry
1	2.5" cal.	Gleditsia triacanthos inermis 'Moraine'	Moraine Thornless Honeylocust
1	2.5" cal.	Ginkgo biloba 'Autumn Gold'	Autumn Gold Ginkgo
1	2.5" cal.	Quercus alba	White Oak
1	2.5" cal.	Tilia cordata 'Greenspire'	Greenspire Littleleaf Linden
1	2.5" cal.	Ulmus 'Frontier'	Frontier Elm
6	Total		
<b>Evergreen Shrubs - Balled and Burlap or Pot</b>			
8	24" ht. x 24" spr.	Buxus x 'Green Velvet'	Green Velvet Boxwood
6	48" height	Thuja occidentalis 'Techny'	Techny Arborvitae
14	Total		
<b>Deciduous Shrubs - Balled and Burlap or Pot</b>			
8	36" height	Hydrangea macrophylla 'Balmer'	Endless Summer Hydrangea
6	30" ht. x 24" spr.	Rosa 'Radtko'	Double Knockout Rose
6	5 Gallon Pot	Rhus aromatica 'Gro Low'	Grow Low Sumac
3	30" ht. x 24" spr.	Spiraea japonica 'Galen'	Double Play Artisan Spirea
23	Total		
<b>Perennials, Ornamental Grasses and Groundcovers - Pots</b>			
14	#1 cont.	Hemerocallis 'Apricot Sparkles'	Apricot Sparkles Daylily
15	#1 cont.	Nepeta racemosa 'Walker's Low'	Walker's Low Catmint
96	3" cell	Vinca minor	Periwinkle
125	Total		

**Ordinance Requirements: All applicable requirements have been met**

Parkway Landscaping	Width	Tree Requirement	Proposed Trees
Street	50' Width	1	Existing 1
N Washington Avenue	50' Width	1	Existing 1

**Perimeter Landscaping: 434.67 linear feet - 24' drive = 410.67'**

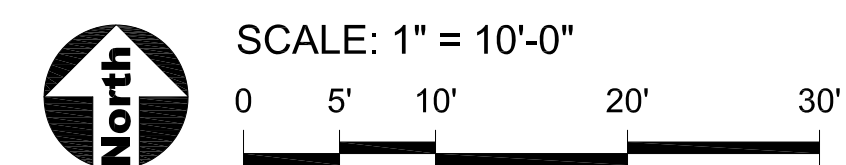
Requirement	Requirement	Proposed Plantings	Fence Notes
1 tree per 70'	6 Shade trees	6 Shade Trees	NA
1 plant per 3' of building facing ROW	West Side 37'-6": 13 shrubs East Side 37'-6": 13 shrubs	West Side: 17 Existing Shrubs East Side: 14 Proposed Shrubs	NA
East Side - non residential adjacent to residential-rear yard:	Continuous landscape planting to be installed at 48" and grow to 72" height within 2 years	6 - Techy Arborviate planted 48" height.	NA

**Parking Lot Landscaping: The parking lot is less than 10 total spaces and therefore parking lot landscaping is not required.**

**Monument Sign Landscaping:**

Requirement	Requirement	Proposed Plantings	Fence Notes
One square foot per each square foot of monument sign	20 square feet of Monument Sign proposed	50 Square feet as part of larger landscape bed	NA

**City Requirements for Planting**  
 Trees shall be installed a minimum of five (5) feet horizontally from underground electrical feeds, sanitary sewers, sanitary services, water mains, and water services. Trees shall be installed a minimum of ten (10) feet horizontally from utility structures and appurtenances, including, but not limited to, manholes, valve vaults, valve boxes and fire hydrants. No trees, shrubs or obstacles will be allowed 10' in front of, 5' on the sides of and 7' to the rear of the electrical transformer.



**SHEET TITLE**  
**Landscape Plan**

**SHEET NUMBER**  
**L2**

**DRAW / REVISION**

REV	DESCRIPTION	DATE
MK	RESUBMITTAL	30DEC2016
MK	RESUBMITTAL	30MAY2017
LD	RESUBMITTAL	15NOV2017
LD/RD	RESUBMITTAL	6DEC2017
LD	RESUBMITTAL	26JAN2018