

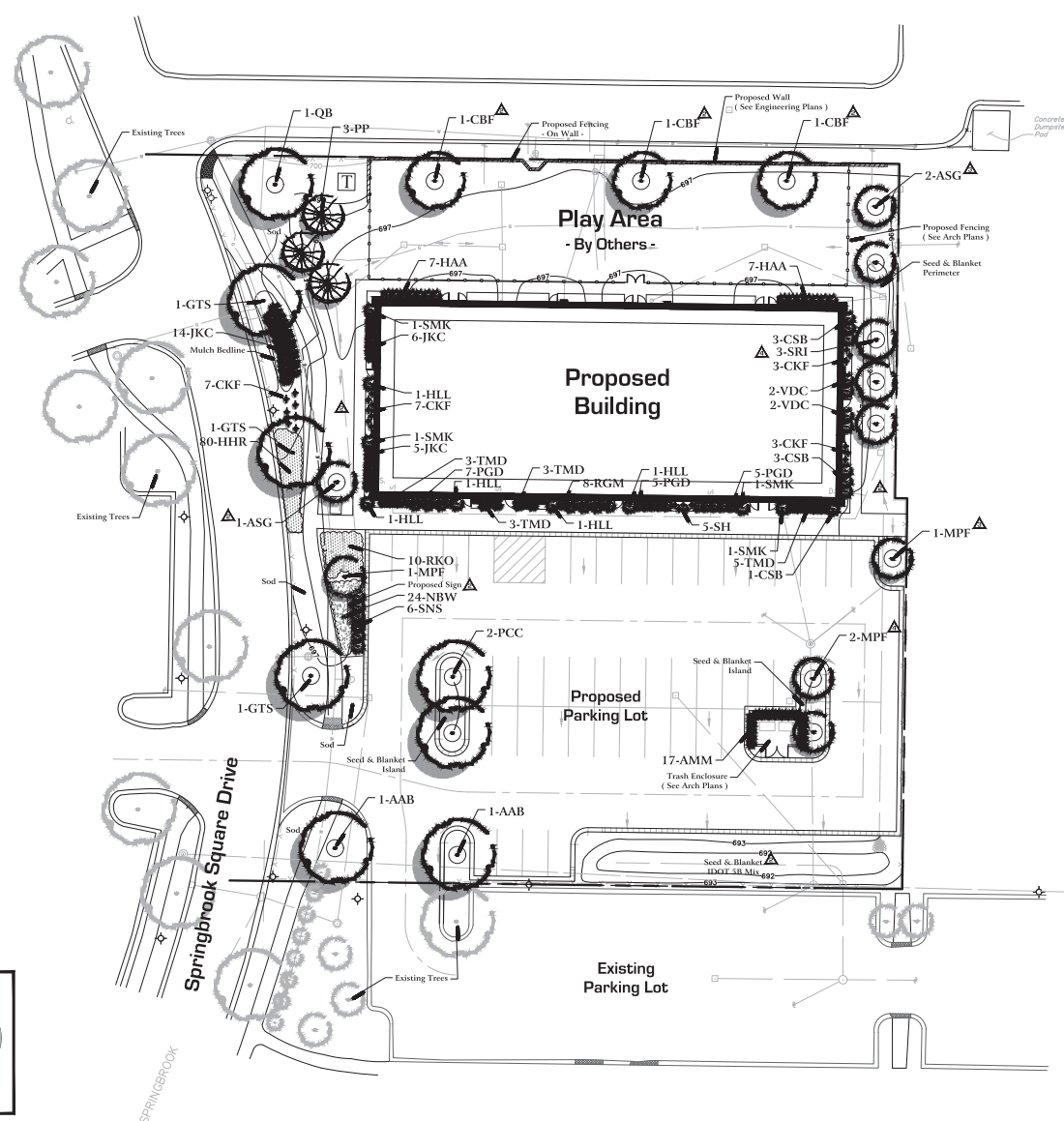
PLANT & MATERIAL LIST : ▲▲▲▲

Code	Scientific Name	Common Name	Size	Qty	Remarks
SHADE TREES					
AMB	<i>Amelanchier alnifolia</i>	Common Blueberry	2.5' x 3'	3	B&B
CRB	<i>Cornus bicolor</i>	Spicebush	2.5' x 3'	3	B&B
GLS	<i>Gleditsia triacanthos</i>	Black Locust	2.5' x 4'	4	B&B
PLC	<i>Prinos celtica</i>	Black Cherry	2.5' x 4'	4	B&B
SR	<i>Spirea alba</i>	White Spirea	2.5' x 3'	3	B&B
ORNAMENTAL TREES					
AGI	<i>Amelanchier a grandiflora</i>	Apple Serviceberry	#	3	B&B, Multi Stem
MPF	<i>Malus 'Prize Winner'</i>	Prize Winner Flowering Crab	2.5' x 4'	4	B&B
SR	<i>Spirea alba</i>	White Spirea	2.5' x 3'	3	B&B
EVERGREEN TREES					
PT	<i>Pinus strobus</i>	White Pine	#	3	B&B
EVERGREEN SHRUBS					
TM9	<i>Taxus canadensis</i>	Eastern White Pine	24"	14	B&B
BC	<i>Baccharis arifolia</i>	Common Wintergreen	18"	25	3 Gallon Container
ORNAMENTAL SHRUBS					
DMB	<i>Desmodium illinoense</i>	Illinois Tick	24"	12	3 Gallon Container
CRB	<i>Cornus bicolor</i>	Spicebush	24"	2	3 Gallon Container
HSA	<i>Hydrangea arborescens</i>	Common Hydrangea	24"	18	3 Gallon Container
HLL	<i>Hydrangea 'Lindo'</i>	Hydrangea	24"	18	3 Gallon Container
PGD	<i>Panicum 'Panicum'</i>	Panicum	18"	12	3 Gallon Container
BCM	<i>Baccharis arifolia</i>	Common Wintergreen	18"	8	3 Gallon Container
RRS	<i>Rosa 'Rosa'</i>	Rosa	18"	10	3 Gallon Container
NKR	<i>Nerium oleander</i>	Oleander	30"	4	3 Gallon Container
SNS	<i>Syringa alba</i>	White Spirea	24"	8	3 Gallon Container
VHR	<i>Viburnum acerifolium</i>	Black Viburnum	30"	4	3 Gallon Container
PERENNIALS & ORNAMENTAL GRASSES					
RK	<i>Rudbeckia hirta</i>	Black-eyed Susan	1.6	20	Container
HHR	<i>Hosta 'Hosta'</i>	Hosta	1.6	80	Container
NW	<i>Nasturtium officinale</i>	Watercress	1.6	24	Container
NS	<i>Nepenthes</i>	Monkey Plant	1.6	3	Container
MISCELLANEOUS					
Sod	Minimal Soil Bed		SV	433	See Construction Notes
Seed and Blanket	Seed and Blanket		SV	100	See Construction Notes
Shredded Hardwood Bark Mulch	Shredded Hardwood Bark Mulch		CV	30	See Construction Notes

CONSTRUCTION NOTES :

- Soil for Parkways and turf areas as noted with an approved blend of improved Kentucky Bluegrass Sod with a mineral soil back.
- Drill seed all remaining turf areas as noted and cover with an S-75 Straw Erosion Control Blankets and staple in place. Seed shall be applied at a rate of 2000 lbs. per Acre. Lawn seed mix shall be as follows:
 - 70% Improved Kentucky Bluegrass (minimum three varieties)
 - 20% Improved Perennial Ryegrass (minimum two varieties with endophytes)
 - 10% Creeping Red Fescue
- Fine grading shall provide slopes which are smooth and continuous. Positive drainage shall be provided in all areas.
- Prior to turf installation all areas shall be fertilized with a 12-12-12 granular fertilizer at a rate of 4000 lbs. per Acre.
- Prepare perennial ornamental grass, groundcover and annual flower beds with a 1 CY, mushroom compost per 100 SF, rotted to an 8" depth.
- Mulch all trees, shrub, perennial & ornamental grass beds with a minimum of three inches shredded hardwood bark mulch.
- Mulch all groundcover and annual beds with minimum of one inch pinebark fines.
- All bed lines and tree saucers require a 4" deep spaded edge between lawn and mulch areas.
- All evergreen (conifers) trees and shrubs must be grown in a natural shape and not sheared.
- Plant material sizing, branching and ball size shall conform to the "American Standards for Nursery Stock" (latest edition) by the American Association of Nurserymen, Inc.
- Plant material shall be nursery grown and be either balled and burlapped or container grown. Sizes and spreads on plant lists represent minimum requirements.
- Quantity lists are supplied as a convenience. Contractor shall verify all quantities, and in case of a discrepancy, the plan shall prevail.
- The Landscape Contractor shall adjust plant locations in field to maintain appropriate spacing from fire hydrants, light poles, all utility structures, driveways and sidewalks. Approval of the Landscape Architect is required when field adjustments to be implemented do not conform to the intent of the plans.
- Contractor shall report any discrepancies in the field to the Landscape Architect and/or Owner.
- The Landscape Contractor shall verify locations of all underground utilities prior to digging. It is required to Contact JUALLE (1.800.292.0123), and any other public or private agency necessary for utility location 48 hours prior to construction.
- Where underground utilities exist, all field adjustments must be approved by the landscape architect.
- The Landscape Contractor shall water plant material, seed and sod areas until the plants have become adequately established and until final acceptance by the owner. Owner to provide all supplemental watering and proper care and maintenance of all plant materials, seed and sod areas after acceptance of Landscape Contractors work.
- No plants are to be changed or substituted without the approval of the Landscape Architect and the City of Naperville.
- Landscape Contractor shall warrant all material and labor for a period of one year from the date of final acceptance and shall repair any defects and replace all dead plant material as required during the warranty period.
- Trees shall be set back a minimum of ten (10) feet horizontally from utility structures, including, but not limited to, manholes, valve vaults, valve boxes, fire hydrants, transformers and switch cans. Trees shall be set back a minimum of five (5) feet horizontally from sanitary sewer, water services and underground electric cable. Approval of the Landscape Architect is required when field adjustments to be implemented do not conform to the intent of the plans.
- Parkway Trees must be offset 5 feet from all storm sewer.
- No trees, shrubs or obstacles will be allowed 10' in front, 5' on the sides, and 7' to the rear of the electrical transformer.

- See Sheet L.102 for Complete Landscape Specifications
- See Sheet L.101 for Planting Details



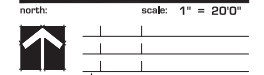
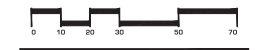
Land Planning
Landscape Architecture
Environmental Site Design

Little Minds Learning Center

Springbrook Square - Lot 9
Naperville, Illinois

Final Landscape Plan (#17-10000015)

Northstar Commercial Partners
1999 Broadway - Suite 770
Denver, CO. 80202



- Revisions:
 - 6.22.2017 Per P.C. Meeting
 - 6.19.2017 Per Auro Estates Comments
 - 5.24.2017 Per City Review dated 5.16.2017
 - 4.28.2017 Per Revised Site Plan
- original issue date: 10 February 2017

drawn by:
checked by:
project no.: 27003
sheet no.:

L.100

Site Plan : Site Plan Layout as per Engineering Plans prepared by CEMCON, Ltd. and dated April 2017.