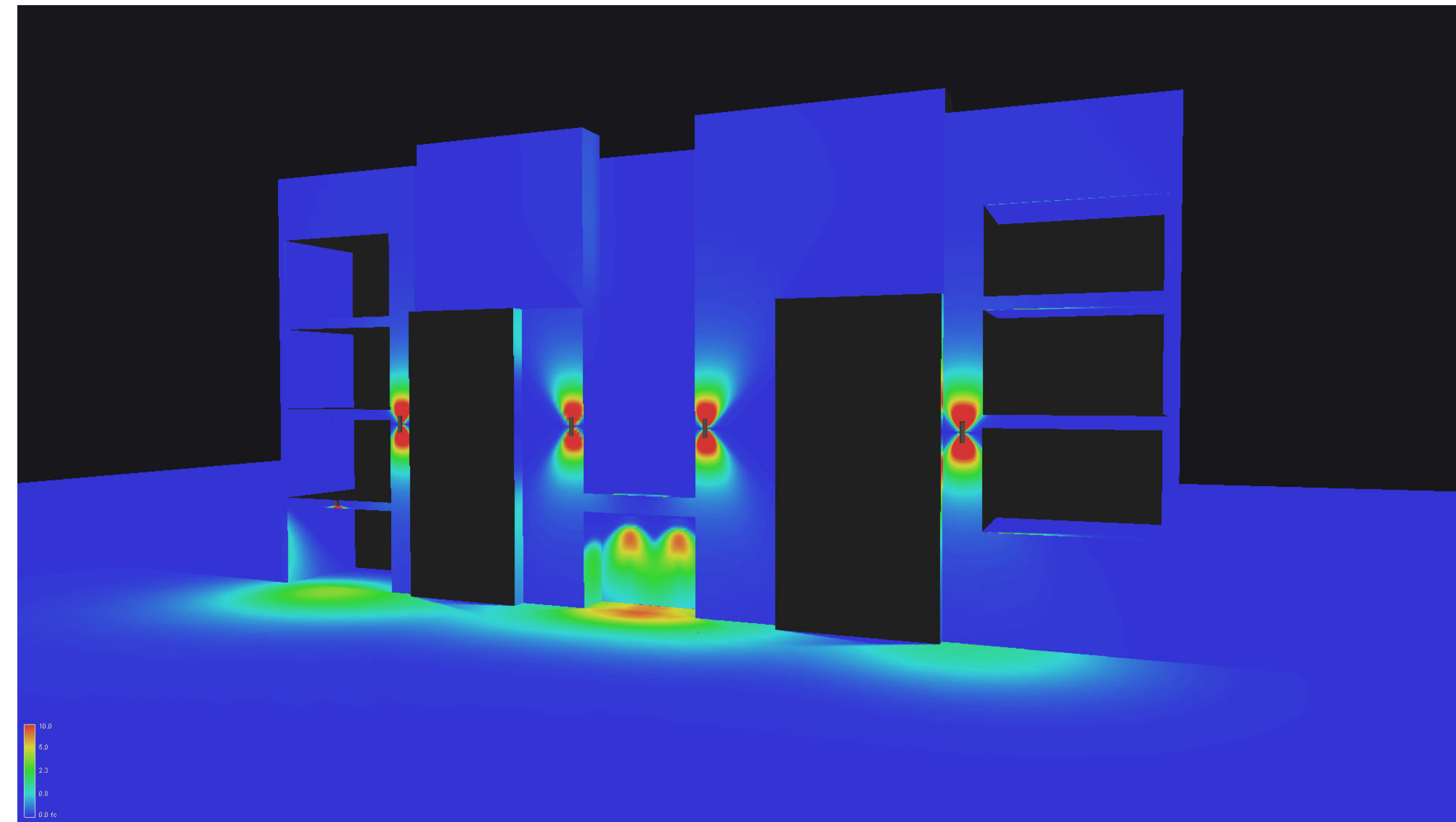
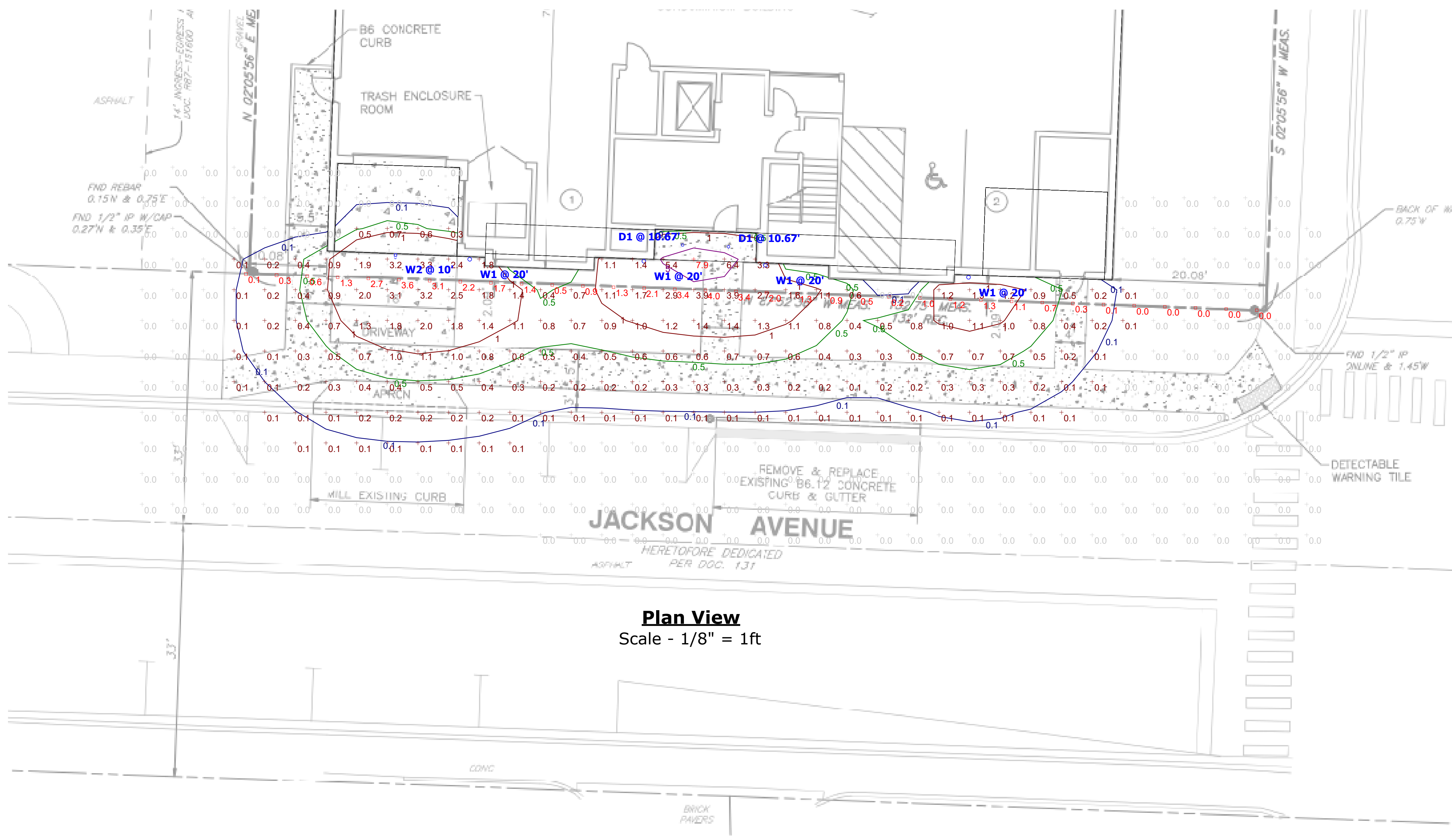


RENDERED VIEW



ILLUMINANCE (fc)



Plan View  
Scale - 1/8" = 1ft

Schedule									
Symbol	Label	Quantity	Manufacturer	Catalog Number	Description	Light Loss Factor	Total Lamp Lumens	Wattage	
○	W1	4	Gotham Architectural Lighting	ICO4UDWC 40/05 AR LD 65D U05LM U65D	INCITO 4 INCH WALL MOUNT DIRECT/INDIRECT CYLINDER, ROUND, 4000K, 500 LUMENS DIRECT, 500 LUMENS INDIRECT, CLEAR, MATTE DIFFUSE, 65 DEGREE BEAM, CRI80	0.93	1227	13.46	
◻	W2	1	Lithonia Lighting	WPX0 LED ALO-1 40K MVOLT	WPX0 LED, 850 Lumen setting, 4000K Setting, 120-277V	0.93	829	6.0096	
○	D1	2	Lithonia Lighting	LDN4 40/05 LO4AR LD	4IN LDN, 4000K, 500LM, CLEAR, MATTE DIFFUSE REFLECTOR, 80CRI	0.93	469	5.74	

Statistics						
Description	Symbol	Avg	Max	Min	Max/Min	Avg/Min
PROPERTY LINE	□	1.3 fc	4.0 fc	0.0 fc	N/A	N/A
GRADE LEVEL CALC POINTS	+	0.3 fc	7.9 fc	0.0 fc	N/A	N/A

**NOTES:**  
 1. CALCULATION POINT WORK PLANE: GRADE LEVEL  
 2. FIXTURE MOUNTING HEIGHT: REFER TO FIXTURE LABELS NOTED ON PLAN  
 3. CALCULATIONS PROVIDED BY KSA ARE NOT A GUARANTEE OF PERFORMANCE. ACTUAL LIGHT LEVELS MAY VARY.\*\*

\*\*This document contains confidential and proprietary information of KSA Lighting & Controls. This document may only be used by or for the benefit of KSA Lighting & Controls representatives and customers. This lighting layout is not a professional engineering drawing and is provided for informational purposes only, without warranty as to accuracy, completeness, reliability or otherwise. KSA Lighting & Controls is not responsible for specifying the light fixtures or illumination requirements for any specific project, nor is it responsible for meeting municipal or building code requirements. It is the obligation of the end-user to consult with a professional engineering advisor to determine whether this lighting layout meets the applicable project requirements for lighting system performance, safety, suitability and effectiveness for use in a particular application. Field verification is recommended when calculations are based on end-user or customer-provided information. End-user environment and application (including, but not limited to, voltage variation and dirt accumulation) can cause actual field performance to differ from the calculated photometric performance represented in this lighting layout. In no event will KSA Lighting & Controls be responsible for any loss resulting from any use of this drawing.