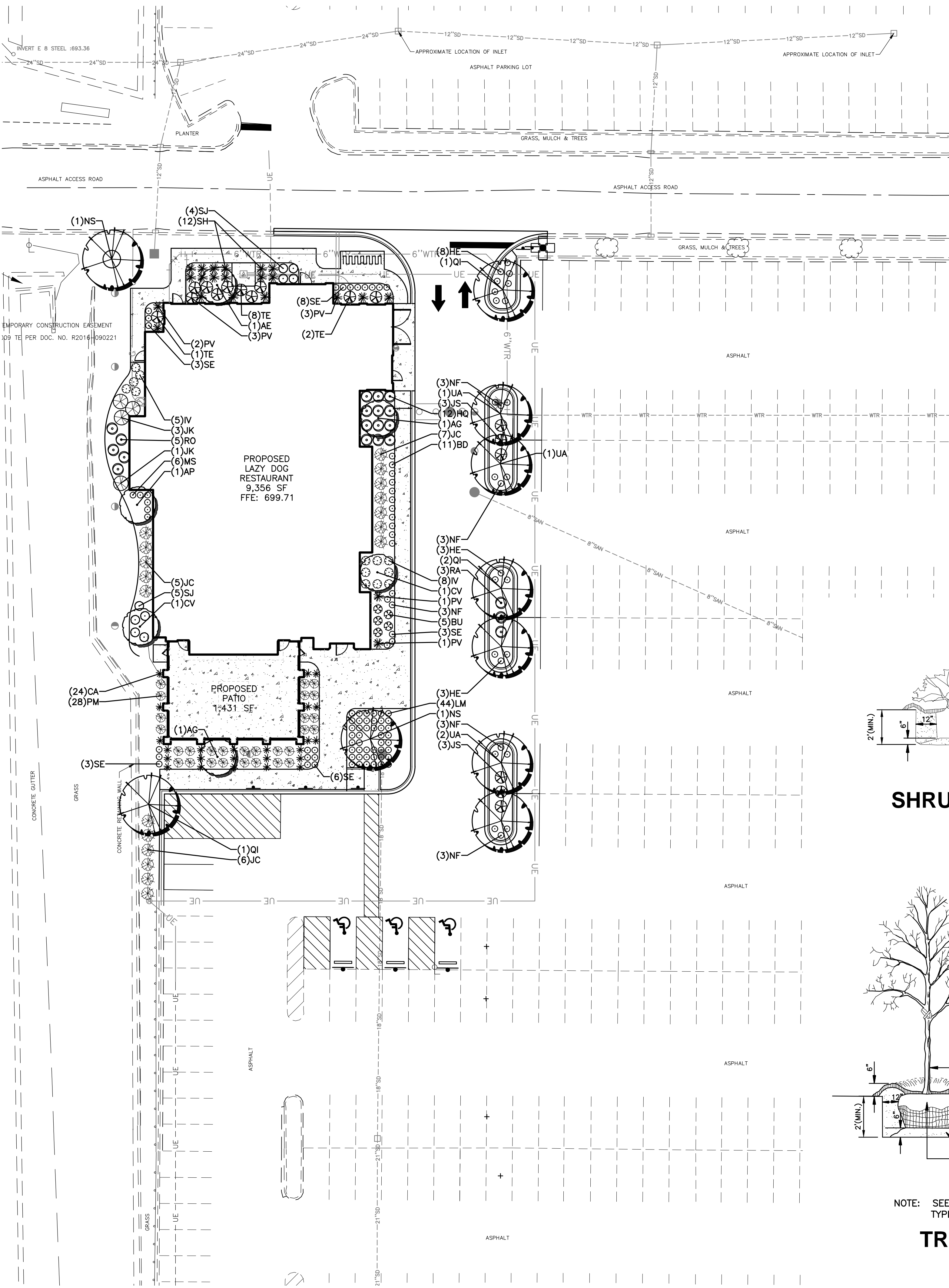


Layout Tab Name: C500 LANDSCAPE PLAN, Images: aerial.jpg; SOUTH LOT AERIAL.jpg; Xrefs: 078581-TBLK.dwg, 078581-X.dwg, 078581-P.dwg, 078581-1.dwg, 078581-2.dwg, 078581-3.dwg, 078581-4.dwg, 078581-5.dwg, 078581-6.dwg, 078581-7.dwg, 078581-8.dwg, 078581-9.dwg, 078581-10.dwg, 078581-11.dwg, 078581-12.dwg, 078581-13.dwg, 078581-14.dwg, 078581-15.dwg, 078581-16.dwg, 078581-17.dwg, 078581-18.dwg, 078581-19.dwg, 078581-20.dwg, 078581-21.dwg, 078581-22.dwg, 078581-23.dwg, 078581-24.dwg, 078581-25.dwg, 078581-26.dwg, 078581-27.dwg, 078581-28.dwg, 078581-29.dwg, 078581-30.dwg, 078581-31.dwg, 078581-32.dwg, 078581-33.dwg, 078581-34.dwg, 078581-35.dwg, 078581-36.dwg, 078581-37.dwg, 078581-38.dwg, 078581-39.dwg, 078581-40.dwg, 078581-41.dwg, 078581-42.dwg, 078581-43.dwg, 078581-44.dwg, 078581-45.dwg, 078581-46.dwg, 078581-47.dwg, 078581-48.dwg, 078581-49.dwg, 078581-50.dwg, 078581-51.dwg, 078581-52.dwg, 078581-53.dwg, 078581-54.dwg, 078581-55.dwg, 078581-56.dwg, 078581-57.dwg, 078581-58.dwg, 078581-59.dwg, 078581-60.dwg, 078581-61.dwg, 078581-62.dwg, 078581-63.dwg, 078581-64.dwg, 078581-65.dwg, 078581-66.dwg, 078581-67.dwg, 078581-68.dwg, 078581-69.dwg, 078581-70.dwg, 078581-71.dwg, 078581-72.dwg, 078581-73.dwg, 078581-74.dwg, 078581-75.dwg, 078581-76.dwg, 078581-77.dwg, 078581-78.dwg, 078581-79.dwg, 078581-80.dwg, 078581-81.dwg, 078581-82.dwg, 078581-83.dwg, 078581-84.dwg, 078581-85.dwg, 078581-86.dwg, 078581-87.dwg, 078581-88.dwg, 078581-89.dwg, 078581-90.dwg, 078581-91.dwg, 078581-92.dwg, 078581-93.dwg, 078581-94.dwg, 078581-95.dwg, 078581-96.dwg, 078581-97.dwg, 078581-98.dwg, 078581-99.dwg, 078581-100.dwg



### LANDSCAPE CODE SUMMARY

NAPERVILLE, ILLINOIS – CODE OF ORDINANCES  
 TITLE 5 – BUILDING REGULATIONS  
 CHAPTER 10 – LANDSCAPING, SCREENING, AND TREE PRESERVATION

**PARKWAY LANDSCAPING (5-10-3-3)**  
 PROVIDE ONE TREE EVERY FORTY (40) LF OF ROAD FRONTAGE

ROUTE 59 (272 LF)  
 = 6.8 TREES REQUIRED  
 = EXISTING DETENTION BASIN PREVENTS TREE PLANTING

**PERIMETER LANDSCAPING (5-10-3-4.1)**  
 PROVIDE ONE TREE EVERY SEVENTY (70) LF

NORTH PERIMETER (194 LF)  
 = 2.8 TREES REQUIRED  
 = 2 EXISTING TREES & 1 NEW TREE PROVIDED

WEST PERIMETER (272 LF)  
 = 3.9 TREES REQUIRED  
 = 4 TREES PROVIDED

**FOUNDATION LANDSCAPING (5-10-3-4.2)**  
 PROVIDE ONE PLANT FOR EVERY THREE (3) LF OF BUILDING LENGTH

575 LF OF BUILDING LENGTH  
 = 192 PLANTS REQUIRED  
 = 194 PLANTS PROVIDED

**PARKING LOT INTERIOR LANDSCAPING (5-10-3-5.1)**  
 PROVIDE ONE TREE FOR EVERY 130 SF OF ISLAND WITH 50% LIVE PLANT MATERIAL COVERAGE

1,205 SF OF ISLANDS  
 = 9.3 TREES REQUIRED  
 = 9 TREES & OVER 50% LIVE PLANT MATERIAL COVERAGE PROVIDED

**PARKING LOT PERIMETER LANDSCAPING (5-10-3-5.2)**  
 PROVIDE LANDSCAPE ACROSS 50% OF THE PARKING LOT TO A HEIGHT OF 30 INCHES AND SPACED FOUR FEET ON CENTER

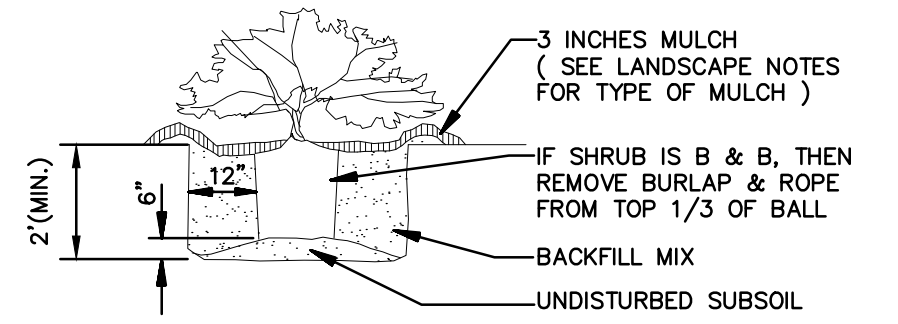
ROUTE 50 (45 LF)  
 = 5.6 SHRUBS REQUIRED  
 = 6 SHRUBS PROVIDED

### LANDSCAPE NOTES

- LOCATING AND PROTECTING ALL UNDERGROUND UTILITIES, PRIOR TO DIGGING, IS RESPONSIBILITY OF THE LANDSCAPE CONTRACTOR.
- PRIOR TO INSTALLATION, THE LANDSCAPE CONTRACTOR SHALL INSPECT THE SUB GRADE, GENERAL SITE CONDITIONS, VERIFY ELEVATIONS, UTILITY LOCATIONS, IRRIGATION, APPROVE TOPSOIL PROVIDED BY GENERAL CONTRACTOR AND OBSERVE THE SITE CONDITIONS UNDER WHICH THE WORK IS TO BE DONE. NOTIFY GENERAL CONTRACTOR OF ANY UNSATISFACTORY CONDITIONS. WORK SHALL NOT PROCEED UNTIL SUCH CONDITIONS HAVE BEEN CORRECTED AND ARE ACCEPTABLE TO THE LANDSCAPE CONTRACTOR AND/OR CONSTRUCTION MANAGER.
- GENERAL AND LANDSCAPE CONTRACTOR ARE RESPONSIBLE FOR PROTECTING EXISTING TREES FROM DAMAGE DURING CONSTRUCTION. GENERAL CONTRACTOR TO INSTALL TREE PROTECTION FENCING PRIOR TO ANY SITE WORK.
- ALL SHRUB AND GROUND COVER BEDS TO BE MULCHED WITH A MINIMUM OF 3 INCHES OF CLEAN SHREDDED HARDWOOD MULCH.
- PLANTING HOLES TO BE DUG A MINIMUM OF TWICE THE WIDTH AND 6-12 INCHES DEEPER THAN THE SIZE OF THE ROOT BALL OF BOTH SHRUB AND TREE. AMEND BACKFILL WITH TOPSOIL MIX. BACKFILL AND TAMP BOTTOM OF HOLE PRIOR TO PLANTING SO TOP OF ROOT BALL DOES NOT SETTLE BELOW SURROUNDING GRADE.
- TOPSOIL MIX TO BE 4 PARTS SCREENED TOPSOIL AND 1 PART ORGANIC MATERIAL (i.e. NATURE'S HELPER OR PRO MIX).
- EXISTING GRASS IN PROPOSED PLANTING AREAS TO BE REMOVED AND AREA TO BE HAND RAKED TO REMOVE ALL ROCKS AND DEBRIS LARGER THAN 1 INCH IN DIAMETER PRIOR TO PLANTING SHRUBS.
- SOIL TO BE TESTED TO DETERMINE FERTILIZER AND LIME REQUIREMENTS. LIME AND FERTILIZER TO BE DISTRIBUTED PRIOR TO SPREADING SEED. ALL DISTURBED AREAS (INCLUDING RIGHT-OF-WAYS) NOT RECEIVING PLANTINGS TO RECEIVE 4 INCHES OF TOPSOIL AND SEED.
- ALL CHANGES TO DESIGN AND/OR PLANT SUBSTITUTIONS TO BE AUTHORIZED BY LANDSCAPE ARCHITECT.
- ALL PARKING ISLANDS TO BE BERMED UP 6"-10" WITH CLEAN FRIABLE TOPSOIL PRIOR TO PLANTING.
- ALL LANDSCAPING SHALL BE INSTALLED IN CONFORMANCE WITH ANSI Z60.1 THE AMERICAN STANDARD FOR NURSERY STOCK, AND THE ACCEPTED STANDARDS OF THE AMERICAN ASSOCIATION OF NURSERMEN.
- THE LANDSCAPE CONTRACTOR SHALL GUARANTEE ALL PLANTS INSTALLED FOR ONE FULL YEAR FROM DATE OF ACCEPTANCE BY THE OWNER. ALL PLANTS SHALL BE ALIVE AND AT A VIGOROUS RATE OF GROWTH AT THE END OF THE GUARANTEE PERIOD. THE LANDSCAPE CONTRACTOR SHALL NOT BE RESPONSIBLE FOR ACTS OF GOD OR VANDALISM.
- ANY PLANT THAT IS DETERMINED DEAD, IN AN UNHEALTHY OR UNSIGHTLY CONDITION, LOST ITS SHAPE DUE TO DEAD BRANCHES OR OTHER SYMPTOMS OF POOR, NON-VIGOROUS GROWTH SHALL BE REPLACED BY THE LANDSCAPE CONTRACTOR WITH THE COST OF THE REPLACEMENT INCLUDED IN THE BID OR PROPOSAL PRICE.
- WATER THOROUGHLY TWICE IN THE FIRST 24 HOURS AND APPLY MULCH IMMEDIATELY.
- TREES SHALL BE INSTALLED A MINIMUM OF FIVE (5) FEET HORIZONTALLY FROM UNDERGROUND ELECTRICAL FEEDERS, SANITARY SEWERS, SANITARY SERVICES, WATER MAINS, AND WATER SERVICES. TREES SHALL BE INSTALLED A MINIMUM TEN (10) FEET HORIZONTALLY FROM UTILITY STRUCTURES AND APPURTENANCES, INCLUDING, BUT NOT LIMITED TO, MANHOLES, VALVE UNITS, VALVE BOXES, AND FIRE HYDRANTS.

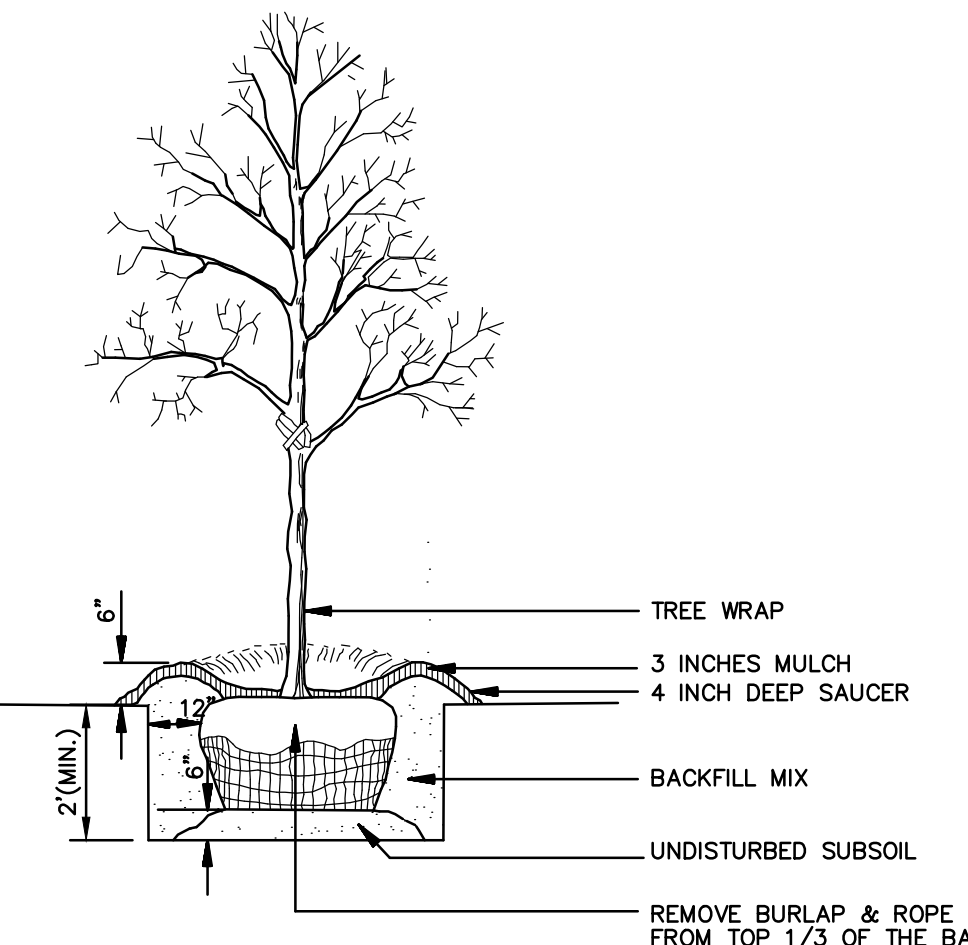
### PERMANENT SEED BLEND

6 LBS PER 1000 SF  
 90% FINE LEAF FESCUE (FESTUCA ARUNDINACEA)  
 REBEL, REBEL II, WRANGLER, BONANZA, MOJAVE OR EQUAL  
 10% KENTUCKY BLUEGRASS (POA PRATENSIS)  
 MIDNIGHT, RUGBY II, MIDIRON VARIETIES OR EQUAL  
 98% PURITY AND 85% GERMINATION  
 95% WEED FREE  
 8 LBS 12-12-12 FERTILIZER PER 1000 SF  
 1 1/2 BALES OF STRAW PER 1000 SF



### SHRUB PLANTING

N.T.S.



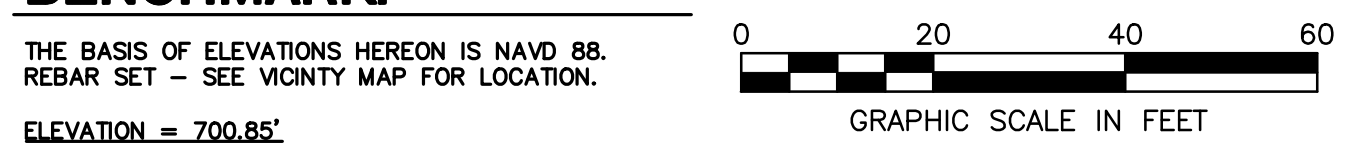
NOTE: SEE LANDSCAPE NOTES FOR THE TYPE OF MULCH MATERIAL TO USE.

### TREE PLANTING

N.T.S.

TAG	QTY	SCIENTIFIC NAME	COMMON NAME	COND.	SIZE	REMARKS
<b>SHADE TREE</b>						
NS	2	<i>Nyssa sylvatica</i>	Black Gum	B&B	2.5" cal. 14'ht. 7'wd	Full, well shaped
QI	4	<i>Quercus imbricaria</i>	Shingle Oak	B&B	2.5" cal. 14'ht. 7'wd	Full, well shaped
UA	4	<i>Ulmus americana 'Princeton'</i>	Princeton American Elm	B&B	2.5" cal. 14'ht. 7'wd	Full, well shaped
<b>ORNAMENTAL TREE</b>						
AG	2	<i>Amelanchier x grandiflora 'Autumn Brilliance'</i>	Apple Serviceberry	B&B	1.5" cal. 8'ht. 4'wd.	Full, well shaped, single-stem
AE	1	<i>Aesculus pavia</i>	Red Buckeye	B&B	8'ht. 4'wd.	Full, well shaped, 3-stem
AP	1	<i>Acer palmatum 'Bloodgood'</i>	Bloodgood Japanese Maple	B&B	1.5" cal. 8'ht. 4'wd.	Full, well shaped, single-stem
CV	2	<i>Chionanthus virginicus</i>	White Fringetree	B&B	8'ht. 4'wd.	Full, well shaped, multi-stem
<b>EVERGREEN SHRUB</b>						
JU	5	<i>Buxus 'Glencoe'</i>	Chicagoland Green Boxwood	#3 cont.	18"ht. x 18"wd.	Full, vigorous
BC	18	<i>Juniperus chinensis 'Sea Green'</i>	Sea Green Juniper	#5 cont.	24"ht. x 24"wd.	Full, vigorous
JS	6	<i>Juniperus chinensis sargentii 'Viridis'</i>	Green Sargent Juniper	#3 cont.	12"ht. x 18"wd.	Full, vigorous
JK	4	<i>Juniperus chinensis 'Keteleeri'</i>	Keteleeri Upright Juniper	B&B	48"ht. x 24"wd.	Full, vigorous
PM	28	<i>Pinus mugo 'Slowmound'</i>	Slowmound Dwarf Mugo Pine	#3 cont.	18"ht. x 18"wd.	Full, vigorous
TE	11	<i>Taxus x media 'Everlow'</i>	Everlow Yew	#3 cont.	12"ht. x 18"wd.	Full, vigorous
<b>DECIDUOUS SHRUB</b>						
HQ	12	<i>Hydrangea quercifolia 'Pee Wee'</i>	Pee Wee Oakleaf Hydrangea	#3 cont.	18"ht. x 18"wd.	Full, vigorous
IV	13	<i>Itea virginica 'Little Henry'</i>	Little Henry Sweetspire	#3 cont.	18"ht. x 18"wd.	Full, vigorous
RA	3	<i>Rhus aromatica 'Gro-Low'</i>	Gro-Low Fragrant Sumac	#3 cont.	18"ht. x 18"wd.	Full, vigorous
RO	5	<i>Rosa x 'Radkapin'</i>	Double Pink Knockout Rose	#5 cont.	24"ht. x 24"wd.	Full, vigorous
SJ	9	<i>Spiraea japonica 'Shirobana'</i>	Shirobana Spirea	#3 cont.	18"ht. x 18"wd.	Full, vigorous
<b>ORNAMENTAL GRASS</b>						
CA	24	<i>Calamagrostis x acutifolia 'Karl Foerster'</i>	Feather Reed Grass	#2 cont.		Full, vigorous
PV	6	<i>Panicum virgatum 'Hot Rod'</i>	Hot Rod Red Switchgrass	#2 cont.		Full, vigorous
SH	12	<i>Sporobolus heterolepis</i>	Prairie Dropseed	#2 cont.		Full, vigorous
<b>PERENNIAL</b>						
BD	11	<i>Buddleia 'Pugster Amethyst'</i>	Dwarf Amethyst Butterflybush	#2 cont.		
HE	14	<i>Hemerocallis 'Happy Returns'</i>	Happy Returns Daylily	#1 cont.		
LM	44	<i>Liriope muscari 'Big Blue'</i>	Big Blue Liriope	#1 cont.		
MS	6	<i>Matteuccia struthiopteris</i>	Ostrich Fern	#1 cont.		
NF	15	<i>Nepeta x faassenii 'Walker's Low'</i>	Walker's Low Catmint	#1 cont.		
SE	23	<i>Sedum kamtschaticum var. elaeagnifolium</i>	Yellow Stonecrop	#1 cont.		

\* QUANTITIES ARE PROVIDED FOR CONVENIENCE ONLY. CONTRACTOR TO VERIFY QUANTITIES OF PLANTS ON LANDSCAPE PLAN.



REVISION	No.	DATE	BY	CHKD.
	2	11/19/18	REVISED PER CITY COMMENTS	

PROJECT No: 078581  
 DATE: 08/31/18  
 DES. JC  
 DR. RW  
 CKD. RW

1815 South Meyers Road  
 Suite 950  
 Oakbrook Terrace, IL 60181  
 WOOLPERT  
 ARCHITECTURAL ENGINEERING & LANDSCAPE ARCHITECTURE  
 630.424.9080  
 FAX: 630.495.3731

SITE IMPROVEMENT PLANS  
 HERITAGE SQUARE  
 LAZY DOG RESTAURANT  
 NE CORNER ROUTE 59 & AURORA AVENUE  
 NAPERVILLE, ILLINOIS

LANDSCAPE PLAN

SHEET NO. C500