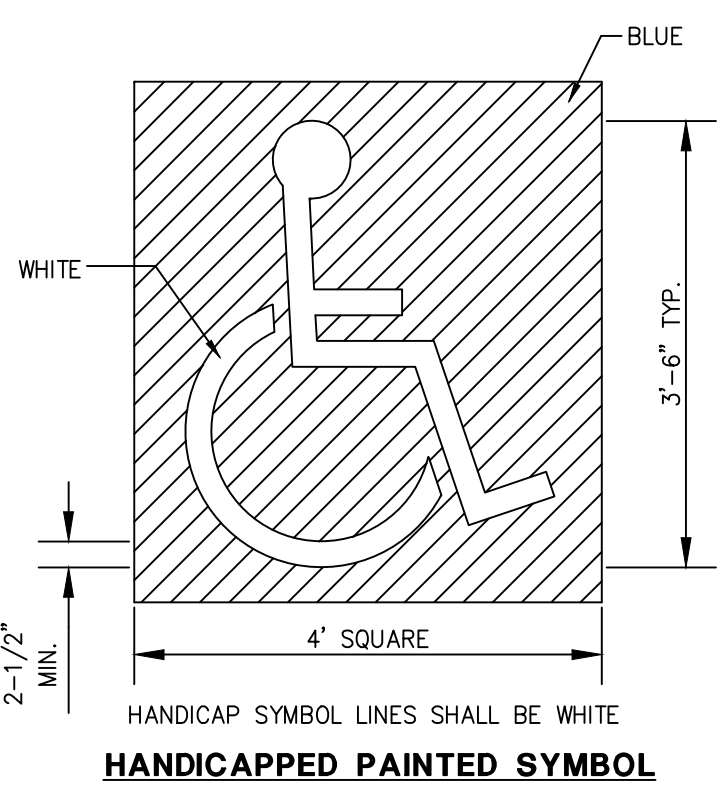
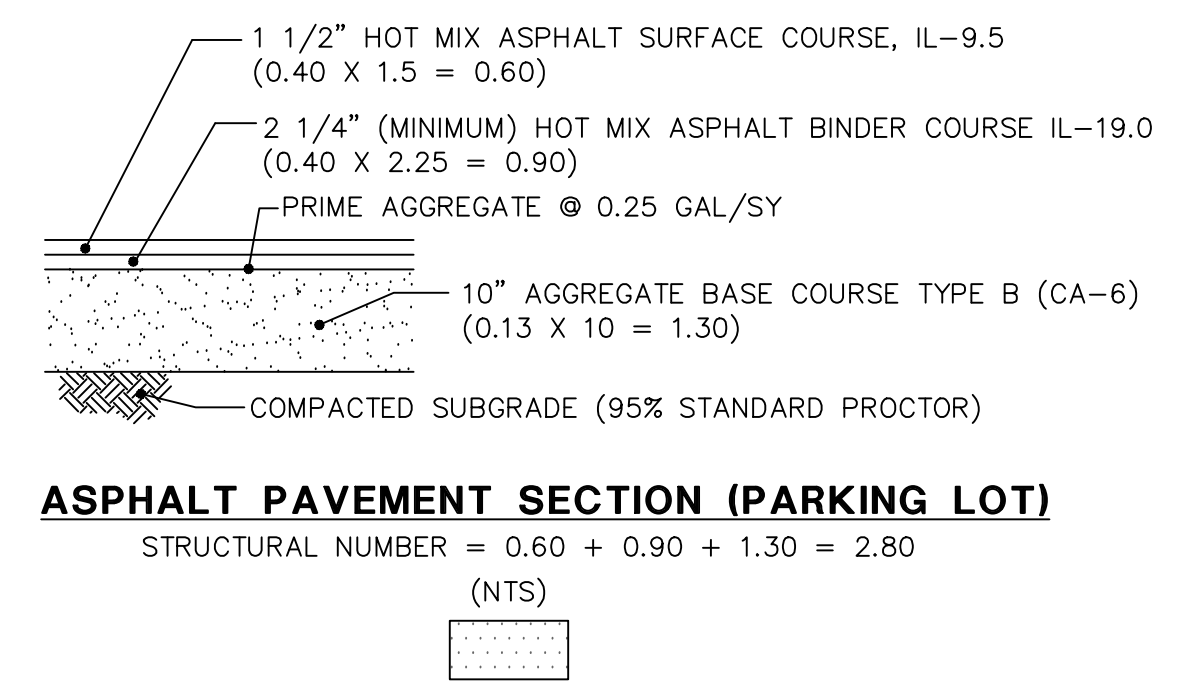
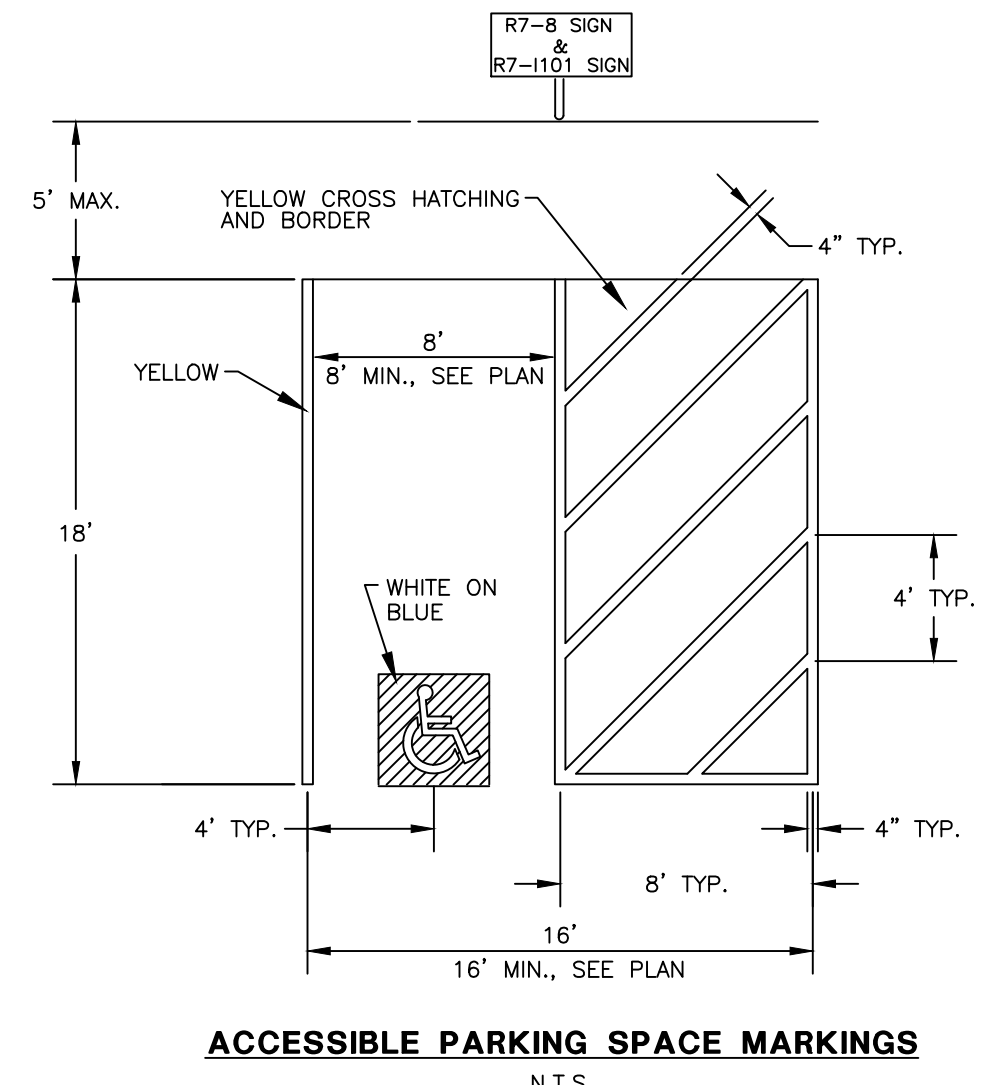


- NOTES FOR HANDICAP PARKING STALLS:**
- EACH PARKING SPACE SHALL BE AT LEAST EIGHT FEET WIDE, WITH AN EIGHT FOOT WIDE ACCESS AISLE, FOR A TOTAL OF SIXTEEN FEET.
  - ADJACENT HANDICAPPED PARKING SHALL NOT SHARE A COMMON ACCESS AISLE.
  - SIGNS SHALL BE VERTICALLY MOUNTED ON A POST OR A WALL AT THE FRONT CENTER OF THE PARKING SPACE NO MORE THAN FIVE (5) FEET HORIZONTALLY FROM THE FRONT OF A PARKING SPACE AND SET A MINIMUM OF FOUR (4) FEET FROM THE FINISHED GRADE TO THE BOTTOM OF THE SIGN.
  - HANDICAPPED PARKING SIGNS SHALL ALSO EXHIBIT THE WORDS "\$250.00 FINE".
  - PARKING SPACES DESIGNED FOR PERSONS WITH DISABILITIES AND ACCESSIBLE PASSENGER LOADING ZONES THAT SERVE A PARTICULAR BUILDING, SHALL BE LOCATED ON THE SHORTEST POSSIBLE ACCESSIBLE ENTRANCE OF THE BUILDING.
  - IN SEPARATE PARKING STRUCTURES OR LOTS THAT DO NOT SERVE A PARTICULAR BUILDING, PARKING SPACES FOR PERSONS WITH DISABILITIES SHALL BE LOCATED ON THE SHORTEST POSSIBLE CIRCULATION ROUTE TO AN ACCESSIBLE PEDESTRIAN ENTRANCE OF THE PARKING FACILITY.

# OF HANDICAP SPACES REQUIRED PER # OF OFF STREET PARKING SPACES REQUIRED	ACCESSIBLE PRKG SPACES REQUIRED MIN. # OF
1 TO 20	1
21 TO 50	2
51 TO 75	3
76 TO 100	4
101 TO 150	5
151 TO 200	6
201 TO 300	7
301 TO 400	8
401 TO 500	9
501 TO 1000	2% OF TOTAL NUMBER
OVER 1000	20 PLUS 1 FOR EACH 100 OVER 1000



- NOTES:**
- B6.12 CONCRETE CURB AND GUTTER HAS BEEN DIMENSIONED TO THE BACK OF CURB. A MINIMUM OF 4 INCHES OF AGGREGATE BASE SHALL BE PLACED BENEATH ALL CURB AND SHALL EXTEND 18 INCHES BEYOND BACK OF CURB. GUTTER FLAG SHALL BE 10 INCHES THICK, PROVIDE 12:1 TRANSITION FROM DEPRESSED CURB TO NOMINAL CURB HEIGHT (6\"/>
  - UNLESS OTHERWISE NOTED, ALL PAVEMENT MARKINGS SHALL BE YELLOW PAINT, 4-INCHES WIDE.
  - THE EXISTING PAVEMENT SECTION OF WASHINGTON STREET AND 7TH AVENUE IS UNKNOWN. UTILITY TRENCH PAVING SECTION DETAILS FOR RIGID AND FLEXIBLE PAVEMENTS HAVE BEEN INCLUDED IN DRAWINGS.
  - CONCRETE SIDEWALK SHALL BE:
    - 5\"/>
    - 4\"/>
 CONCRETE SIDEWALK THROUGH DRIVEWAY AND CONCRETE DRIVEWAY SHALL BE:
    - 8\"/>
    - 4\"/>
  - SEE DETAIL SHEETS FOR "DOWNTOWN NAPERVILLE STREETSCAPE STANDARDS FOR PAVEMENT PATTERNS, CORNER/HANDICAP RAMP DETAIL, TYPICAL SECTIONS FOR DRIVEWAYS, HANDICAP RAMPS, PARKWAY SECTIONS, MATERIALS, AND COLORS.
  - PEDESTRIAN BOLLARD LIGHT TO MATCH LIGHTING INSTALLED AT 720 WASHINGTON STREET IMMEDIATELY TO THE NORTH.

COPYRIGHT 2018, ROAKE AND ASSOCIATES, INC. ALL RIGHTS RESERVED

**ROAKE AND ASSOCIATES, INC.**  
 CONSULTING ENGINEERS • LAND SURVEYORS • PLANNERS  
 1884 QUINCY AVENUE, SUITE 100A • NAPERVILLE, ILLINOIS 60640  
 TEL (630) 366-3232 • FAX (630) 366-3267

PREPARED FOR:  
**TAILORING BY MONICA INC.**  
 7 EAST 7TH AVENUE  
 NAPERVILLE, ILLINOIS 60563  
 TEL. (630) 885-9070

NO.		DATE		DESCRIPTION	
1	08/20/18	REV. PER CITY RVW DATED 08/01/18			

**TAILORING BY MONICA**

**DIMENSION PLAN**

DRN./CKD. BY: SRH/JGC FILE: 1351315E FLD. BK./PG.: 266/50 SHEET NO. 11 OF 11  
 SCALE: 1"=10' DATE: 07/06/18 JOB NO.: 135.1315