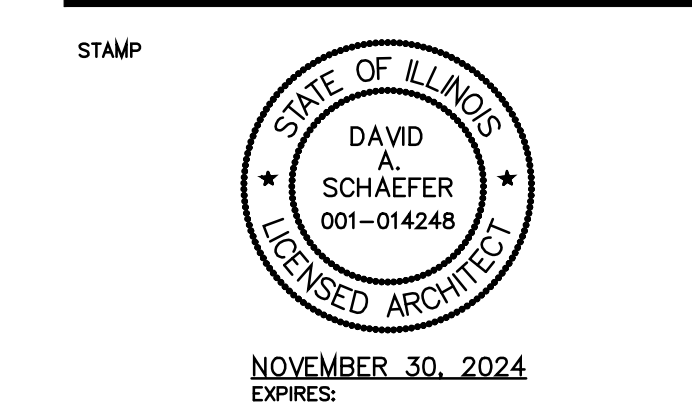


DAVID A. SCHAEFER ARCHITECTS  
 2500 S. HIGHLAND AVE. SUITE 340  
 LOMBARD, ILLINOIS 60148  
 W: 630.261.9250 F: 630.261.9259  
 © 2024 DAVID A. SCHAEFER ARCHITECTS, PC

**MATERIAL SCHEDULE**

- 1 ASPHALT SHINGLES.  
 TIMBERLINE SHINGLES SUPPLY BY MATERIALS CORP., COLOR : WEATHERED WOOD.
- 2 PRE-FIN. ALUM. TRIM.  
 UNA-CLAD - ALUM. FASCIA, TRIM, & DOWNSPOUTS, SUPPLIED BY UNA-CLAD STEEL, COLOR : MEDIUM BRONZE.
- 3 FACE BRICK : (RUNNING BOND)  
 NORMAN SIZE FACE BRICK SUPPLIED BY, ILLINOIS BRICK COMPANY, COLOR: MEDIUM IRONSPOT TT SMOOTH NORMAN.
- 4 VENEER STONE CAST STONE  
 VENEER STONE SUPPLIED BY "BUECHEL STONE CORP.", COLOR:
- 5A SMOOTH FACE CAST STONE.  
 CAST STONE, SUPPLIED BY "HARVEY CEMENT PRODUCTS", COLOR : #3
- 5B ROCK FACE CAST STONE SILL  
 CAST STONE, SUPPLIED BY "HARVEY CEMENT PRODUCTS", COLOR : #3
- 6 STOREFRONT  
 ALUMINUM STOREFRONT SUPPLIED BY "KAWNEER", COLOR : CHAMPAGNE
- 7 LIGHT FIXTURE  
 MURRAY FIESS-40L1802WP  
 ALL ELECTRICAL TO BE DONE BY DESIGN BUILD CONTRACTOR.

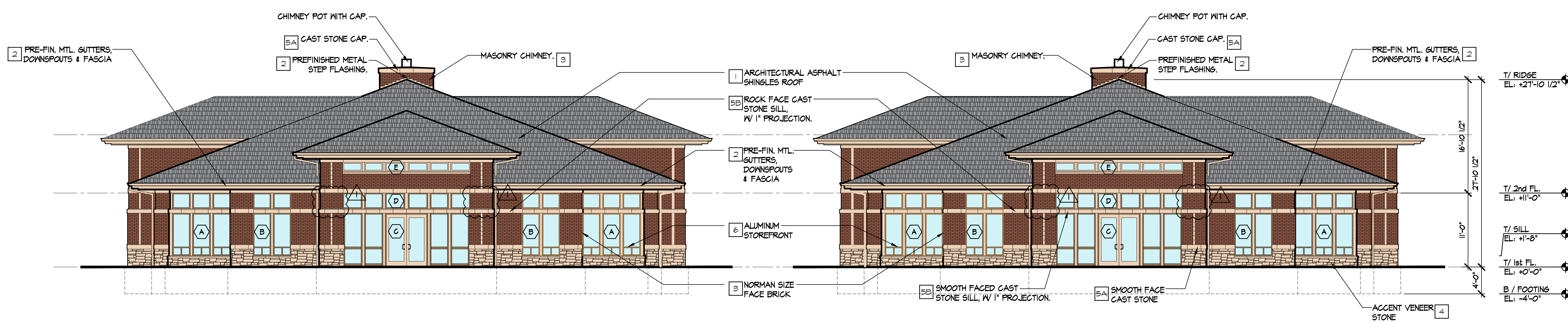
NO.	DATE	DESCRIPTION
1	9/30/2024	CITY REVISIONS
	5/31/2024	ISSUED FOR CITY REVIEW



SIGNATURE: \_\_\_\_\_ DATE: \_\_\_\_\_  
 PROFESSIONAL DESIGN FIRM NO: 184.003216

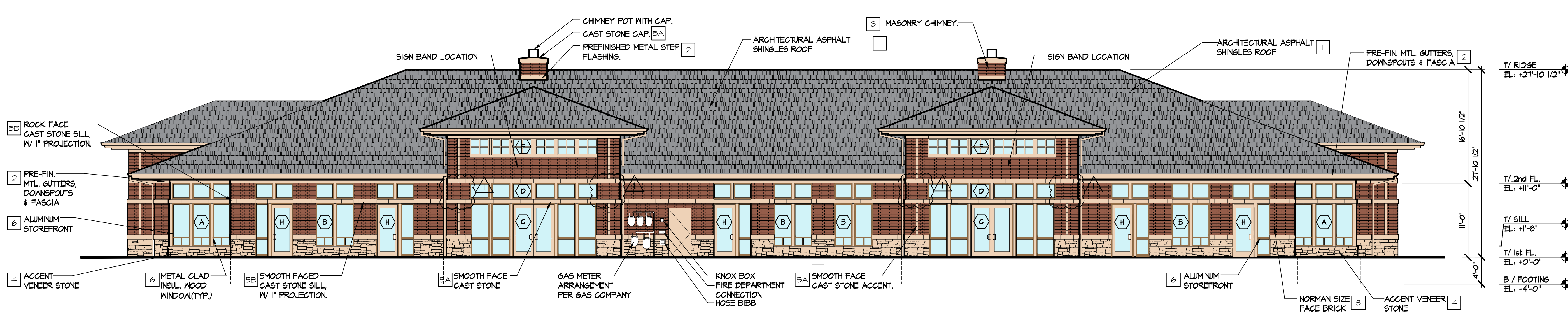
**BHC BUILDING "F"**  
 RIVERWOOD OFFICE CAMPUS  
 628 N. RIVER ROAD  
 NAPERVILLE, IL 60563

DRAWN BY: S.L.	<b>A6</b>
PROJECT NO: 23-147	
ISSUE DATE: OCT. 12, 2023	
SHEET NO.	

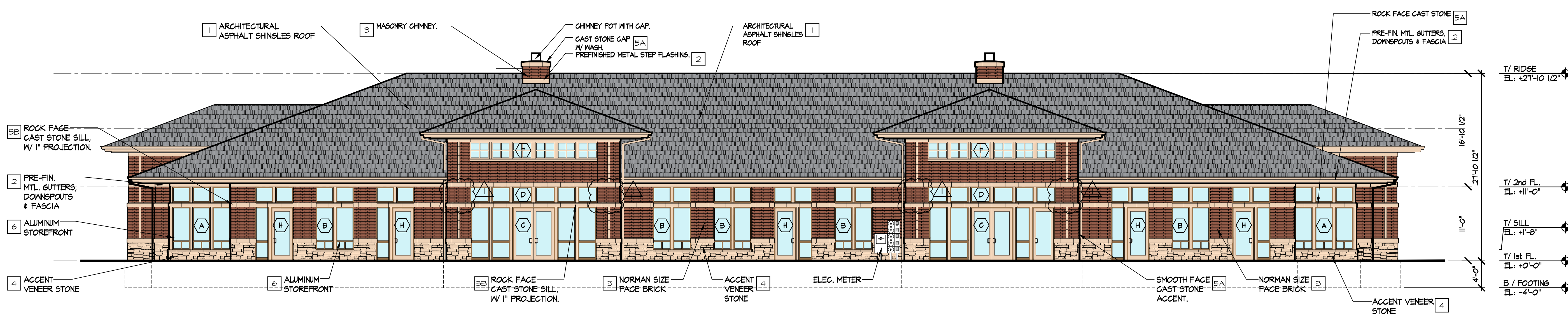


**4 NORTH (SIDE) ELEVATION**  
 SCALE: 1/8" = 1'-0"

**3 SOUTH (SIDE) ELEVATION**  
 SCALE: 1/8" = 1'-0"



**2 WEST (FRONT) ELEVATION**  
 SCALE: 1/8" = 1'-0"



**1 EAST (REAR) ELEVATION**  
 SCALE: 1/8" = 1'-0"