

project:

# 445 Aurora Ave.

Naperville, Illinois

sheet description:

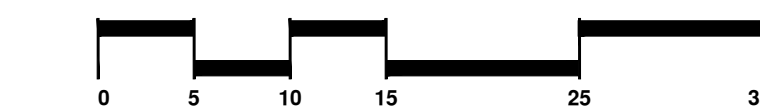
## Final Landscape Plan

owner:

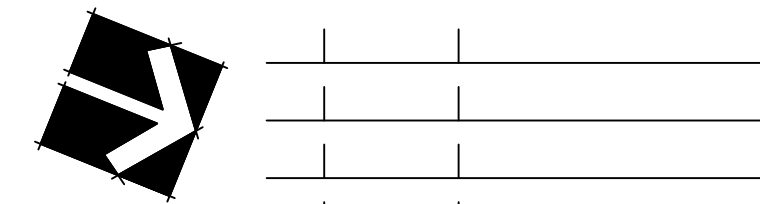
**Charleston Building & Development**  
933 E. Ogden Ave.  
Naperville, IL 60563

285-Native Plug Plantings on slope of Transitional Grading Plant Plugs at 12" o.c. in groups of 5-7 single species.  
80-Rosy Sedge 40-Hay Scented Fern  
50-Wild Ginger 40-Virginia Waterleaf  
50-Wild Geranium 25-Ostrich Fern

Note: Deck Over Not Shown - See Arch. Plans -



north: scale: 1" = 10' 0"



revisions:	date	description
7.7.2022	Per City Review Comments dated 7.6.2022	
6.6.2022	Per City Review Comments dated 6.2.2022	

original issue date: **30 April 2022**

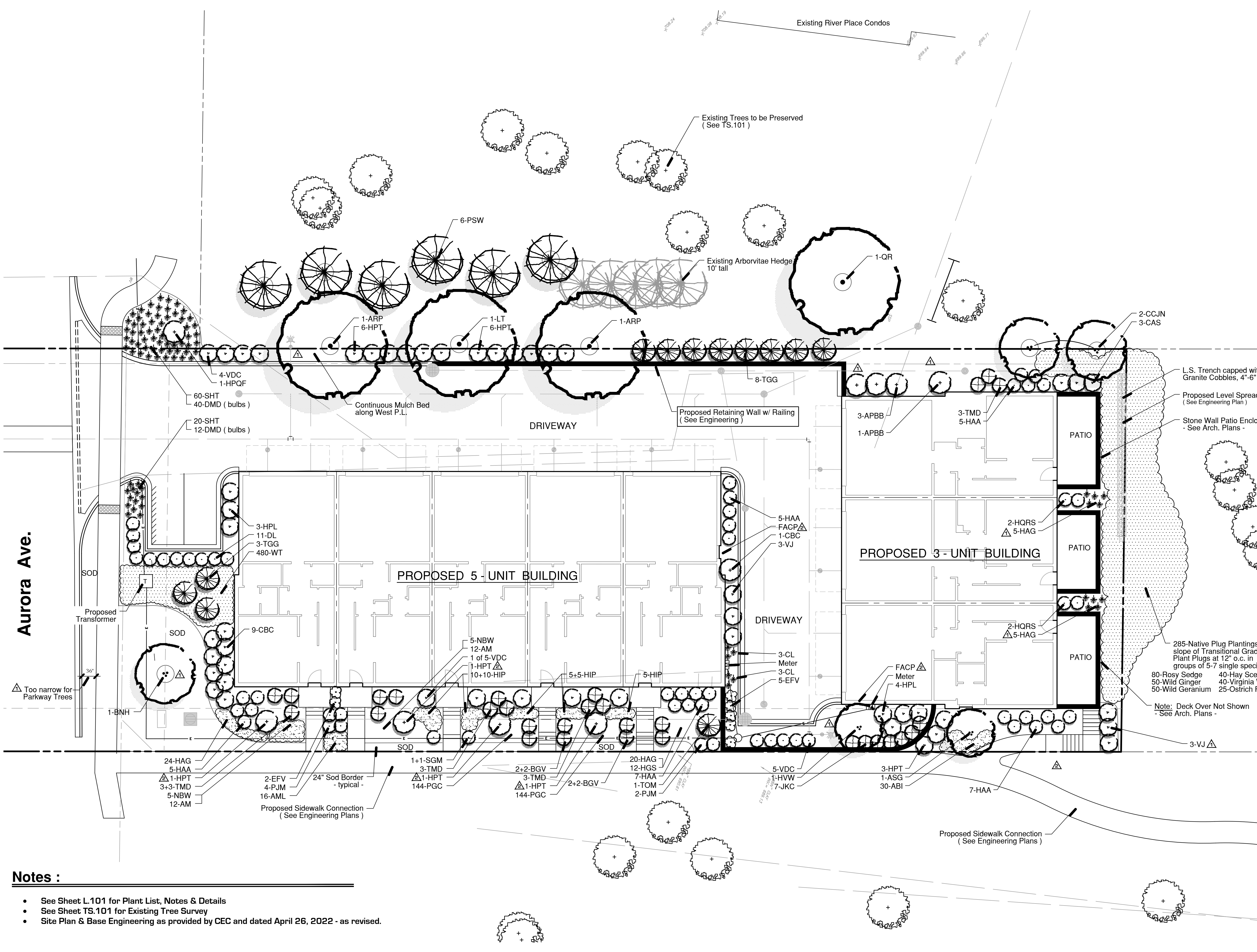
drawn by:

checked by:

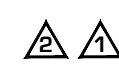
project no.: **22006**

sheet no.:

**L.100**

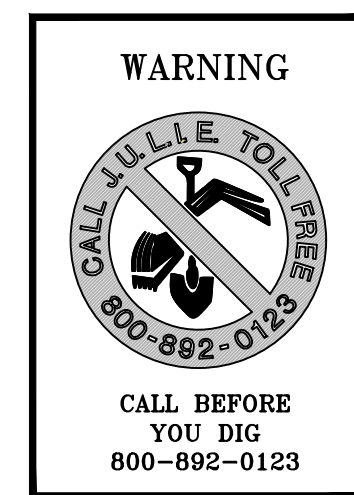


- Notes :**
- See Sheet L.101 for Plant List, Notes & Details
  - See Sheet TS.101 for Existing Tree Survey
  - Site Plan & Base Engineering as provided by CEC and dated April 26, 2022 - as revised.



# Final Plant Material List : ( Sheet L.101 )

Code	Scientific Name	Common Name	Size	Qty	Remarks
<b>SHADE TREES</b>					
ARP	Acer rubrum 'Frank Jr.'	Red Pointe Maple	3.0"	2	B & B
BNH	Betula nigra 'Heritage'	Heritage River Birch	12"	1	B & B, Multi-Stem
LT	Liriodendron tulipifera	Tuliptree	3.0"	1	B & B
QR	Quercus rubra	Red Oak	3.0"	1	B & B
<b>ORNAMENTAL TREES</b>					
CC.N	Carpinus Caroliniana 'J.N. Strain'	J.N. Select American Hornbeam	2.5"	2	B & B
HVV	Hamamelis vernalis	Vernal Witchhazel	5"	1	B & B, Multi-Stem
<b>EVERGREEN TREES</b>					
PSW	Pinus strobus	Eastern White Pine	8'	6	B & B
TGG	Thuja Green Giant	Green Giant Arborvitae	6'	11	B & B
TOM	Thuja occidentalis 'Mission'	Mission Arborvitae	5'	1	B & B
<b>EVERGREEN SHRUBS</b>					
TMD	Taxus x media 'Densiformis'	Dense Yew	24"	15	B & B
BGV	Buxus microphylla 'Green Velvet'	Green Velvet Boxwood	18"	8	5 Gallon Container
EFV	Euonymus tortuosa 'Vegetus'	Bigleaf Wintercreeper	18"	7	5 Gallon Container
JKC	Juniperus chinensis 'Kallays Compacta'	Kallays Compact Juniper	18"	7	5 Gallon Container
PJM	Rhododendron 'PJM'	PJM Rhododendron	24"	6	5 Gallon Container
<b>ORNAMENTAL SHRUBS</b>					
APBB	Aesculus parviflora 'Rogers'	Rogers Bottle Buckeye	24"	4	5 Gallon Container
CAS	Calycanthus 'Aphrodite'	Aphrodite Common Sweetshrub	24"	3	5 Gallon Container
CBC	Cornus sericea 'Bergeson Compact'	Compact Bergeson Dogwood	24"	10	5 Gallon Container
DL	Diervilla lonicera	Dwarf Bush Honeysuckle	18"	11	5 Gallon Container
HAA	Hydrangea arborescens 'Annabelle'	Annabelle Hydrangea	18"	29	5 Gallon Container
HPL	Hydrangea paniculata 'Limelight'	Limelight Hydrangea	30"	7	5 Gallon Container
HPCF	Hydrangea paniculata 'Quick Fire'	Quick Fire Hydrangea	24"	1	5 Gallon Container
HPT	Hydrangea paniculata 'Tardiva'	Tardiva Hydrangea	30"	19	5 Gallon Container
HORS	Hydrangea 'Ruby Slippers'	Ruby Slippers Oakleaf Hydrangea	24"	4	5 Gallon Container
SGM	Spiraea japonica 'Goldmound'	Goldmound Spirea	18"	2	5 Gallon Container
VDC	Viburnum dentatum 'Chistom'	Viburnum Blue Muffin	36"	14	5 Gallon Container
VJ	Viburnum x juddii	Judd Viburnum	24"	7	5 Gallon Container
<b>PERENNIALS &amp; ORNAMENTAL GRASSES</b>					
ABI	Amsonia 'Blue Ice'	Blue Ice Blue Star	1 G	30	Container
AM	Allium Millenium	Millenium Allium	1 G	24	Container
AML	Alchemilla mollis	Lady's Mantle	1 G	16	Container
CL	Chasmanthium latifolium	Northern Sea Oats	1 G	6	Container
DMD	Narcissus dutch master	Trumpet Daffodil	Bulbs	52	
HAG	Hakonechloa macra 'All Gold'	Gold Jap. Forest Grass	1 G	54	Container
HGS	Hosta 'Gold Standard'	Gold Standard Hosta	1 G	12	Container
HIP	Helleborus 'Walhellvor'	Ivory Prince Hellebors	1 G	35	Container
LSV	Lamastrium galicobolus 'Variegatum'	Yellow Archangel	3"	960	Flats
NBW	Nepeta x faassenii 'Blue Wonder'	Blue Wonder Catmint	1 G	10	Container
PGC	Pachysandra terminalis 'Green Carpet'	Green Carpet Pachysandra	3"	288	Flats
SHT	Sporobolus heterolepis 'Tara'	Dwarf Prairie Dropseed	1 G	80	Container
<b>PD NATIVES</b>					
	Asarum canadense	Wild Ginger	Qt.	50	10 / flat
	Carex Rosea	Rosy Sedge	Qt.	80	10 / flat
	Hydrophyllum virginiana	Virginia Waterleaf	Qt.	40	10 / flat
	Dennstaedtia punctilobula	Hay-scented Fern	1 G	40	Container
	Mattencia struthiopteris	Ostrich Fern	1 G	25	Container
	Geranium maculatum	Wild Geranium	Qt.	50	10 / flat

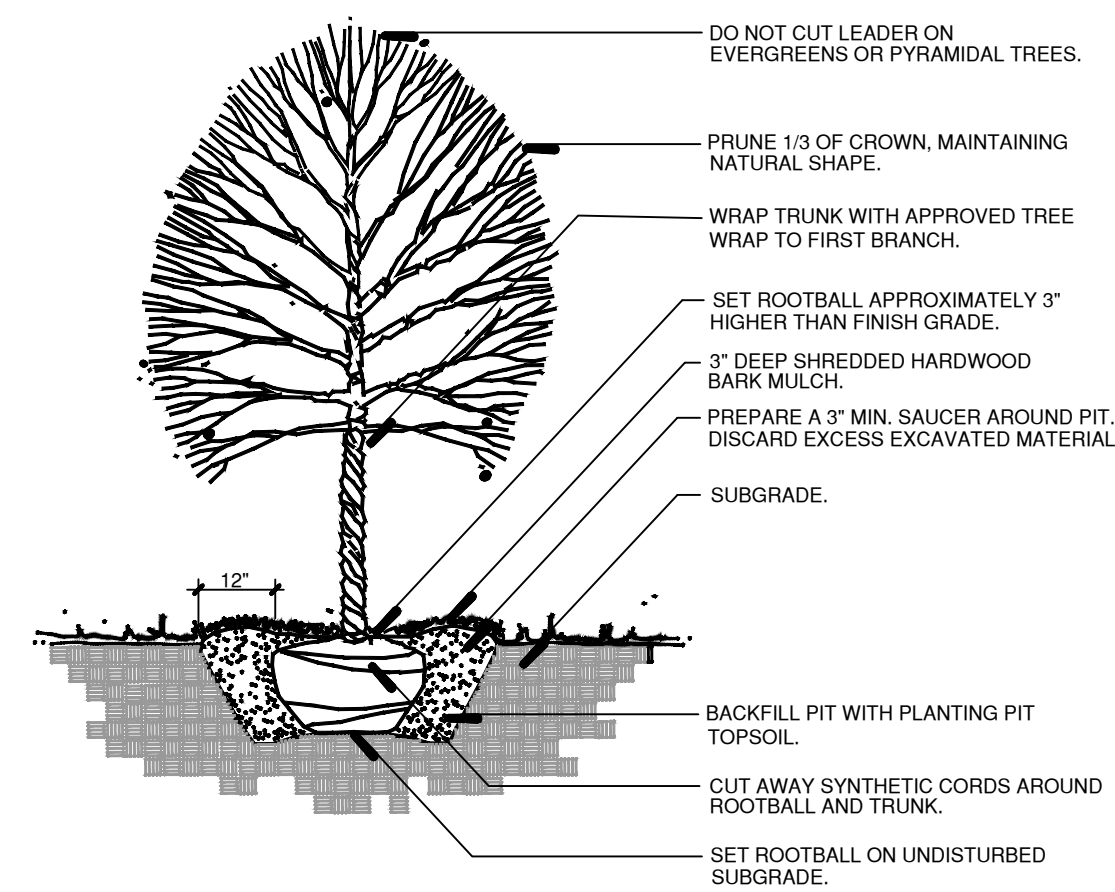


## AGREEMENT NOTES w/ RIVER PLACE :

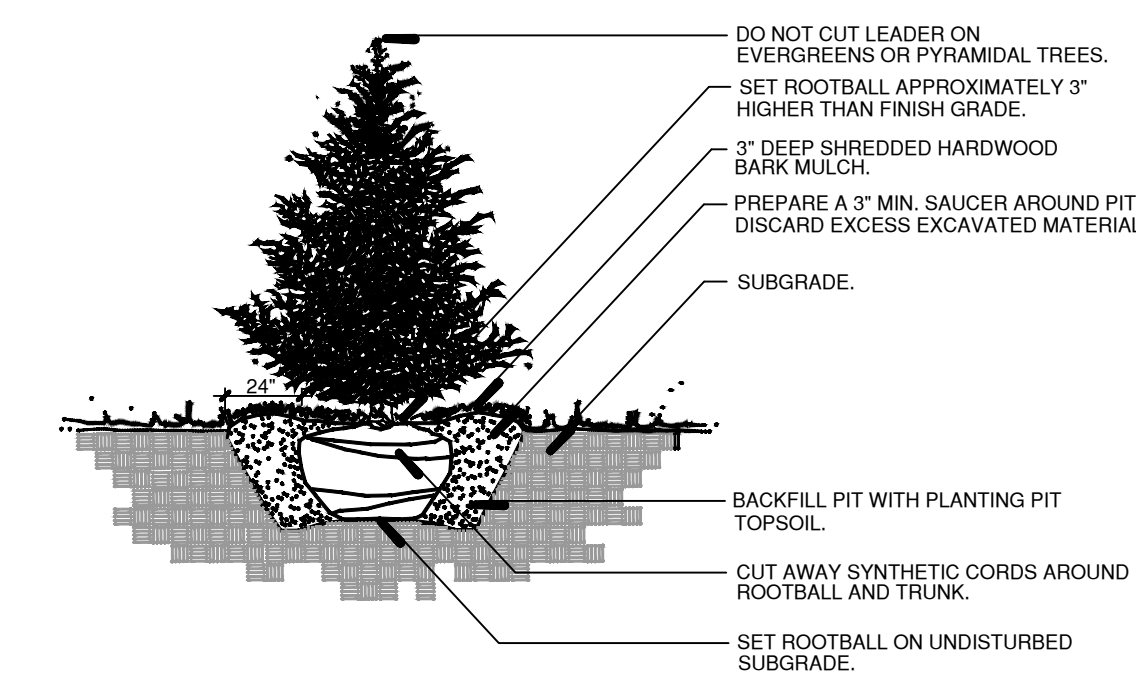
- Charleston to cause the installation of all landscaping as shown on the plan as weather permits.
- River Place will grant all necessary temporary construction easements to allow for installation of landscape materials on River Place Property.
- Charleston will water all materials along the shared property line as needed for 30 days after installation.
- After said thirty day period Charleston and River Place will each be responsible for the care and maintenance of the landscaping on their respective properties.
- Charleston through its landscaping contractor will guarantee the materials for a period of one year provided necessary routine watering and care has occurred.

## CONSTRUCTION NOTES :

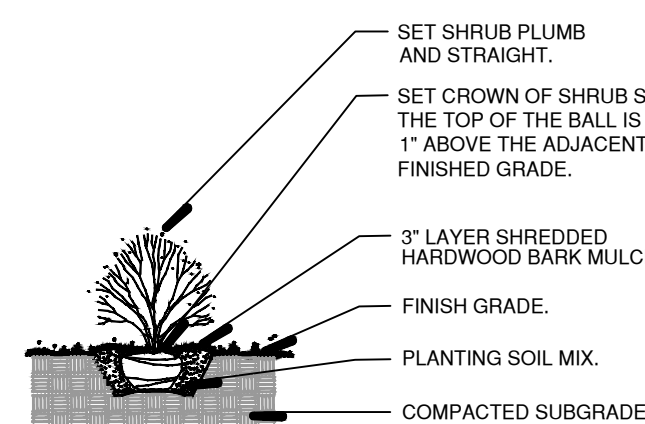
- Sod all turf areas as noted with an approved blend of improved Kentucky Bluegrass Sod with a mineral soil back.
- Fine grading shall provide slopes which are smooth and continuous. Positive drainage shall be provided in all areas.
- Prior to turf installation all areas shall be fertilized with a 12-12-12 granular fertilizer at a rate of 400 lbs. per Acre.
- Prepare perennial, ornamental grass, groundcover and annual flower beds with 1 CY. mushroom compost per 100 SF. rototilled to an 8" depth.
- Mulch all trees, shrub, perennial & orn'l grass beds with a minimum of three inches shredded hardwood bark mulch.
- Mulch all groundcover and annual beds with minimum of one inch pinebark fines.
- All bed lines and tree saucers require a 4" deep spaded edge between lawn and mulch areas.
- All evergreen (conifers) trees and shrubs must be grown in a natural shape - and not sheared.
- Plant material sizing, branching and bud sizes shall conform to the "American Standards for Nursery Stock" (latest edition) by the American Association of Nurserymen, Inc.
- Plant material shall be nursery grown and be either balled and burlapped or container grown. Sizes and spreads on plant list represent minimum requirements.
- Quantity lists are supplied as a convenience. Contractor shall verify all quantities, and in case of a discrepancy, the plan shall prevail.
- The Landscape Contractor shall adjust plant locations in field to maintain appropriate spacing from fire hydrants, light poles, all utility structures, driveways and sidewalks. Approval of the Landscape Architect is required when field adjustments to be implemented do not conform to the intent of the plans.
- Contractor shall report any discrepancies in the field to the Landscape Architect and/or Owner.
- The Landscape Contractor shall verify locations of all underground utilities prior to digging, is required to contact J.U.L.I.E. (1.800.892.0123), and any other public or private agency necessary for utility location 48 hours prior to construction.
- Where underground utilities exist, all field adjustments must be approved by the landscape architect.
- The Landscape Contractor shall water plant material, seed and sod areas until the plants have become adequately established and until final acceptance by the owner. Owner to provide all supplemental watering and proper care and maintenance of all plant materials, seed and sod areas after acceptance of Landscape Contractors work.
- No plants are to be changed or substituted without the approval of the City of Naperville and the City of Naperville.
- Landscape Contractor shall warrantee all material and labor for a period of one year from the date of final acceptance and shall repair any defects and replace all dead plant material as required during the warranty period.
- Trees shall be set back a minimum of ten (10) feet horizontally from utility structures, including, but not limited to, manholes, valve vaults, valve boxes, fire hydrants, transformers and switch cans. Where possible, trees shall be set back a minimum of five (5) feet horizontally from sanitary sewer, water services and underground electric cable. Approval of the Landscape Architect is required when field adjustments to be implemented do not conform to the intent of the plans.



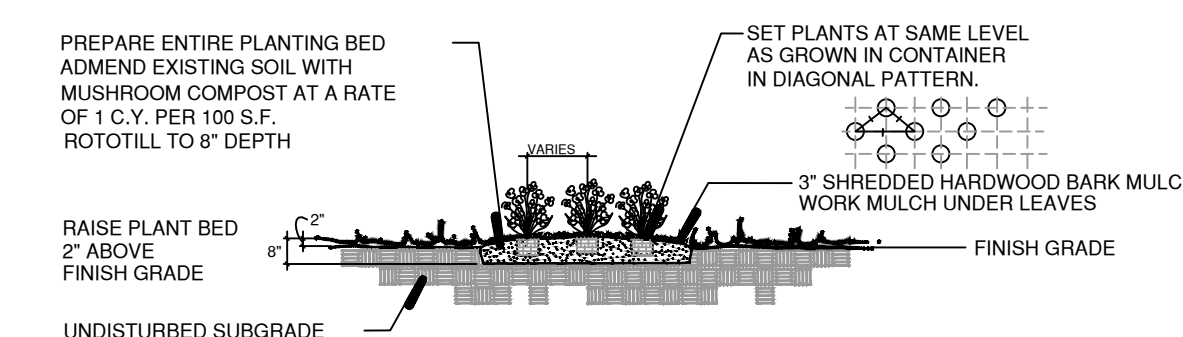
**A** Typical Tree Planting Detail NTS



**B** Typical Evergreen Planting Detail NTS



**C** Typical Shrub Planting Detail NTS



**D** Typical Perennial Planting Detail NTS



Land Planning  
Landscape Architecture  
Environmental Site Design

132 N. WASHINGTON ST. - NAPERVILLE, IL 60540 - 630.305.3880 Fax 630.305.3894

project:

# 445 Aurora Ave.

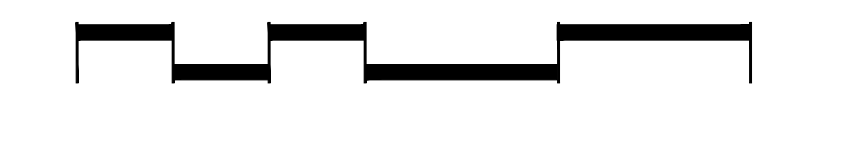
Naperville, Illinois

sheet description:

## Plant List, Notes & Planting Details

owner:

Charleston Building & Development  
933 E. Ogden Ave.  
Naperville, IL 60563



revisions:	date	description
△	7.7.2022	Per City Review Comments dated 7.6.2022
△	6.6.2022	Per City Review Comments dated 6.2.2022

original issue date: **30 April 2022**

drawn by:

checked by:

project no.: **22006**

sheet no.:

# L.101