

Preliminary Landscape Plan

Polo Club

Naperville, Illinois

January 28, 2019

CONSULTANTS:



LANDSCAPE ARCHITECT:
 GARY R. WEBER ASSOCIATES, INC
 402 WEST LIBERTY DRIVE
 WHEATON, ILLINOIS 60187



CIVIL ENGINEER:
 CEMCON, LTD.
 2280 WHITE OAK CIRCLE, SUITE 100
 AURORA, ILLINOIS 60502



LOCATION MAP
 SCALE: 1"=600'

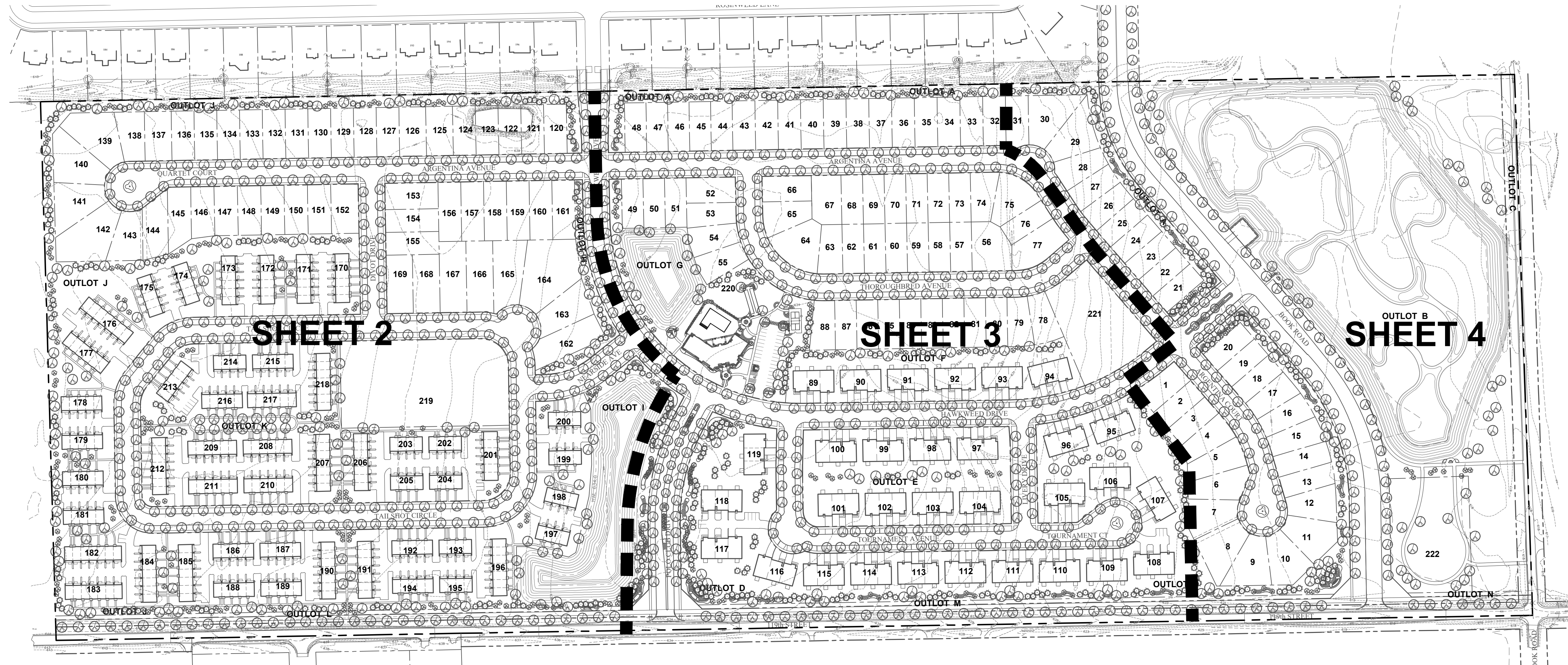
INDEX OF SHEETS

<u>SHEET NO.</u>	<u>DESCRIPTION</u>
0	COVER SHEET
1	OVERALL LANDSCAPE PLAN
2	PRELIMINARY LANDSCAPE PLAN
3	PRELIMINARY LANDSCAPE PLAN
4	PRELIMINARY LANDSCAPE PLAN
5	LANDSCAPE DETAILS
6	LANDSCAPE DETAILS
7	TYPICAL FOUNDATION LANDSCAPE PLANS
8	TREE PRESERVATION PLAN



GENERAL NOTES

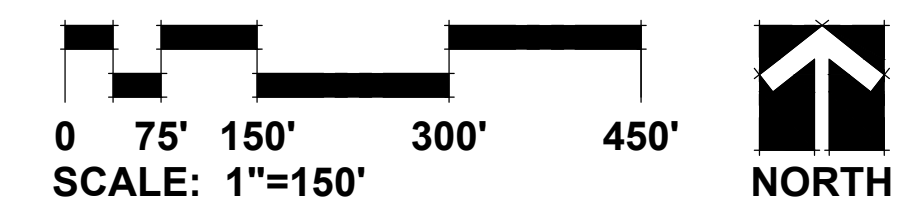
- TREES SHALL BE INSTALLED A MINIMUM OF FIVE (5) FEET HORIZONTALLY FROM UNDERGROUND ELECTRICAL FEEDERS, SANITARY SEWERS, SANITARY SERVICES, WATER MAINS, AND WATER SERVICES. TREES SHALL BE INSTALLED A MINIMUM OF TEN (10) FEET HORIZONTALLY FROM UTILITY STRUCTURES AND APPURTENANCES, INCLUDING, BUT NOT LIMITED TO, MANHOLES, VALVE VAULTS, VALVE BOXES AND FIRE HYDRANTS. NO TREES, SHRUBS OR OBSTACLES WILL BE ALLOWED 10' IN FRONT OF, 5' ON THE SIDES, AND 7' TO THE REAR OF THE ELECTRICAL TRANSFORMER.
- LOCATION OF TREES MAY REQUIRE ADJUSTMENT BASED ON FINAL ENGINEERING PLANS.
- CONTRACTOR SHALL VERIFY UNDERGROUND UTILITY LINES AND IS RESPONSIBLE FOR ANY DAMAGE.
- CONTRACTOR SHALL VERIFY ALL EXISTING CONDITIONS IN THE FIELD PRIOR TO CONSTRUCTION AND SHALL NOTIFY LANDSCAPE ARCHITECT OF ANY VARIANCE.
- MATERIAL QUANTITIES SHOWN ARE FOR CONTRACTOR'S CONVENIENCE ONLY. THE CONTRACTOR MUST VERIFY ALL MATERIAL AND SUPPLY SUFFICIENT MATERIALS TO COMPLETE THE JOB PER PLAN.
- THE LANDSCAPE ARCHITECT RESERVES THE RIGHT TO INSPECT TREES AND SHRUBS EITHER AT PLACE OF GROWTH OR AT SITE BEFORE PLANTING, FOR COMPLIANCE WITH REQUIREMENTS OF VARIETY, SIZE AND QUALITY.
- WORK SHALL CONFORM TO AMERICAN STANDARD FOR NURSERY STOCK, STATE OF ILLINOIS HORTICULTURAL STANDARDS, AND LOCAL MUNICIPAL REQUIREMENTS.
- CONTRACTOR SHALL SECURE AND PAY FOR ALL PERMITS, FEES, AND INSPECTIONS NECESSARY FOR THE PROPER EXECUTION OF THIS WORK AND COMPLY WITH ALL CODES APPLICABLE TO THIS WORK.
- SEE GENERAL CONDITIONS AND SPECIFICATIONS FOR LANDSCAPE WORK FOR ADDITIONAL REQUIREMENTS.



REPRESENTATIVE PLANT LIST

Key	Botanical/Common Name	Size	Remarks	Key	Botanical/Common Name	Size	Remarks	Key	Botanical/Common Name	Size	Remarks
SHADE TREES											
	Acer x freemanii 'Jeffers' Red' AUTUMN BLAZE MAPLE	2 1/2" Cal.			Ulmus carpinifolia 'New Horizon' NEW HORIZON SMOOTHLEAF ELM	2 1/2" Cal.			Cornus alba 'Ballhalo' IVORY HALO DOGWOOD	30" Tall	3' O.C.
	Acer niyabei 'Morton' STATE STREET MAPLE	2 1/2" Cal.			Ulmus 'Morton' ACCOLADE ELM	2 1/2" Cal.			Cornus sanguinea 'Cata' ARCTIC SUN DOGWOOD	24" Tall	3' O.C.
	Acer saccharum 'Green Mountain' GREEN MOUNTAIN SUGAR MAPLE	2 1/2" Cal.			Ulmus 'Morton Glossy' TRIUMPH ELM	2 1/2" Cal.			Itea virginica 'Sprich' LITTLE HENRY VIRGINIA SWEETSPIRE	24" Tall	3' O.C.
	Acer rubrum RED MAPLE	2 1/2" Cal.			Amelanchier grandiflora APPLE SERVICEBERRY	6' Tall	Multi-Stem		Hydrangea macrophylla 'Balmor' ENDLESS SUMMER HYDRANGEA	24" Tall	3' O.C.
	Celtis occidentalis COMMON HACKBERRY	2 1/2" Cal.			Amelanchier laevis ALLEGHANY SERVICEBERRY	6' Tall	Multi-Stem		Rosa 'Radcon' PINK KNOCKOUT ROSE	24" Tall	3' O.C.
	Celtis occidentalis 'Chicagoland' CHICAGO LAND COMMON HACKBERRY	2 1/2" Cal.			Betula nigra RIVER BIRCH	6' Tall	Multi-Stem		Syringa meyeri 'Palibin' DWARF KOREAN LILAC	24" Tall	4' O.C.
	Gleditsia triacanthos var. inermis 'Skycole' SKYLINE HONEYLOCUST	2 1/2" Cal.			Carpinus caroliniana AMERICAN HORNBEAM	6' Tall	Multi-stem		Viburnum dentatum ARROWWOOD VIBURNUM	36" Tall	5' O.C.
	Gleditsia triacanthos var. inermis 'Shademaster' SHADEMASTER HONEYLOCUST	2 1/2" Cal.			Cercis canadensis EASTERN REDBUD	6' Tall	Multi-Stem		Viburnum trilobum 'Hah's' HAH'S CRANBERRYBUSH VIBURNUM	36" Tall	4' O.C.
	Ginkgo biloba MAIDENHAIR TREE	2 1/2" Cal.	Male only		Cornus mas 'Golden Glory' GOLDEN GLORY CORNELIAN CHERRY DOGWOOD	6' Tall	Multi-Stem		Juniperus chinensis v. sargentii 'Viridis' GREEN SARGENT JUNIPER	24" Wide	5' O.C.
	Gymnocladus dioica 'Espresso-JFS' ESPRESSO KENTUCKY COFFEE TREE	2 1/2" Cal.			Crataegus crus-galli inermis THORNLESS COCKSPUR HAWTHORN	6' Tall	Multi-Stem		Juniperus chinensis 'Seagreen' SEA GREEN JUNIPER	30" Wide	4' O.C.
	Liriodendron tulipifera TULIPTREE	2 1/2" Cal.			Malus 'Prairifire' PRAIRIFIRE CRABAPPLE	6' Tall	Multi-Stem		Allium 'Summer Beauty' SUMMER BEAUTY ONION	#1	18" O.C.
	Platanus x acerifolia 'Bloodgood' BLOODGOOD LONDON PLANETREE	2 1/2" Cal.			Malus 'Snowdrift' SNOWDRIFT CRABAPPLE	6' Tall	Multi-Stem		Calamagrostis x acutiflora 'Karl Foerster' FEATHER REED GRASS	#2	24" O.C.
	Platanus x acerifolia 'Exclamation' EXCLAMATION! LONDON PLANETREE	2 1/2" Cal.			Syringa reticulata 'Ivory Silk' IVORY SILK JAPANESE TREE LILAC	6' Tall	Multi-Stem		Hemerocallis 'Happy Returns' HAPPY RETURNS DAYLILY	#1	18" O.C.
	Quercus alba WHITE OAK	2 1/2" Cal.			Abies concolor WHITE FIR	6' Tall			Hemerocallis 'Rosy Returns' ROSY RETURNS DAYLILY	#1	24" O.C.
	Quercus imbricaria SHINGLE OAK	2 1/2" Cal.			Picea glauca 'Densata' BLACK HILLS SPRUCE	6' Tall			Panicum virgatum 'Northwind' NORTHWIND SWITCH GRASS	#2	24" O.C.
	Quercus rubra RED OAK	2 1/2" Cal.			Picea pungens GREEN COLORADO SPRUCE	6' Tall			Pennisetum alopecuroides 'Hornet' DWARF FOUNTAIN GRASS	#2	24" O.C.
	Quercus macrocarpa BUR OAK	2 1/2" Cal.			Picea omorika SERBIAN SPRUCE	6' Tall			Phlox 'Forever Pink' FOREVER PINK PHLOX	#1	18" O.C.
	Quercus muehlenbergii CHINKAPIN OAK	2 1/2" Cal.			Pinus strobus WHITE PINE	6' Tall			Perovskia atriplicifolia 'Little Spire' LITTLE SPIRE RUSSIAN SAGE	#1	18" O.C.
	Tilia americana 'Redmond' REDMOND LINDEN	2 1/2" Cal.			Pinus sylvestris SCOTCH PINE	6' Tall			Rudbeckia fulgida 'Goldsturm' BLACK-EYED SUSAN	#1	18" O.C.
	Tilia cordata 'Greenspire' GREENSPIRE LINDEN	2 1/2" Cal.							Sporobolus heterolepis PRAIRIE DROPSID	#1	18" O.C.
	Tilia tomentosa 'Sterling' STERLING SILVER LINDEN	2 1/2" Cal.									

OVERALL LANDSCAPE PLAN



NOTE: PARKWAY TREES TO BE ADJUSTED AROUND UTILITIES ON FINAL LANDSCAPE PLANS.

GRWA
GARY R. WEBER ASSOCIATES, INC.
 LAND PLANNING
 ECOLOGICAL CONSULTING
 LANDSCAPE ARCHITECTURE
 402 WEST LIBERTY DRIVE
 WHEATON, ILLINOIS 60187
 PHONE: 630-668-7197

CLIENTS
D.R. HORTON
America's Builder
 750 E. BUNKER COURT, SUITE 500
 VERNON HILLS, IL 60061
 ENGINEER
CEMCON, LTD.
 2280 WHITE OAK CIR. SUITE 100
 AURORA, ILLINOIS 60502

POLO CLUB
 NAPERVILLE, ILLINOIS
OVERALL LANDSCAPE PLAN

NO.	REVISIONS	DATE
10		01.28.19
9		01.04.19
8		12.07.18
7		10.18.18
6		10.02.18
5		9.28.18
4		7.30.18
3		7.06.18
2		6.04.18
1		5.15.18

DATE	3.26.18
PROJECT NO.	DR1705
DRAWN	MGM
CHECKED	JCT
SHEET NO.	

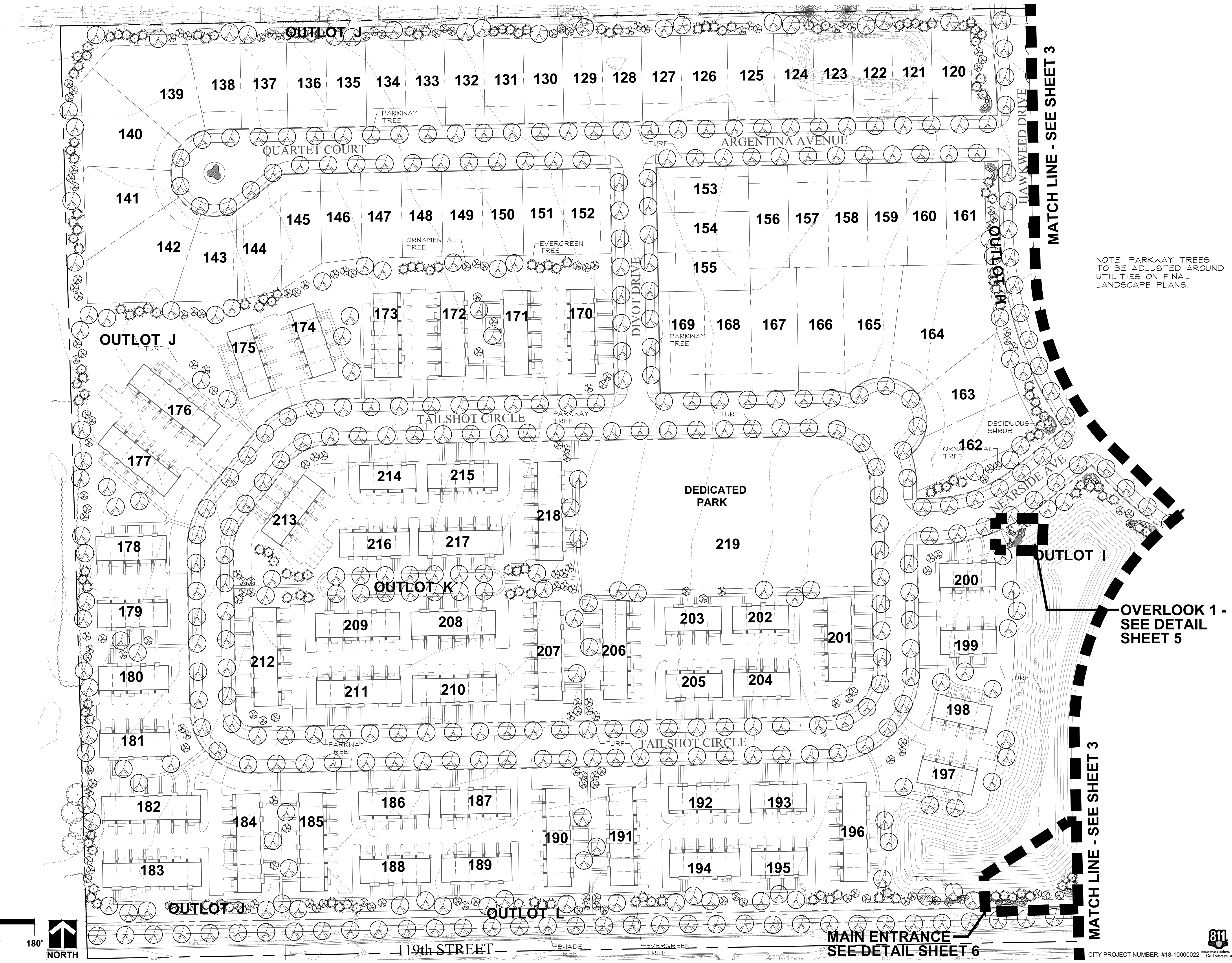


GARY R. WEBER
ASSOCIATES, INC.
LAND PLANNING
ECOLOGICAL CONSULTING
LANDSCAPE ARCHITECTURE
402 WEST LIBERTY DRIVE
WHEATON, ILLINOIS 60187
PHONE: 630-668-7197

CLIENTS
D.R. HORTON
America's Builder
750 E. BUNKER COURT, SUITE 500
VERNON HILLS, IL 60061

ENGINEER
CEMCON, LTD.
2280 WHITE OAK CIR, SUITE 100
AURORA, ILLINOIS 60502

POLO CLUB
NAPERVILLE, ILLINOIS
PRELIMINARY LANDSCAPE PLAN



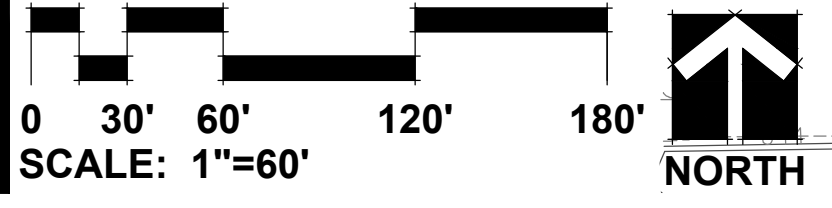
NOTE: PARKWAY TREES TO BE ADJUSTED AROUND UTILITIES ON FINAL LANDSCAPE PLANS.

MATCH LINE - SEE SHEET 3

OVERLOOK 1 - SEE DETAIL SHEET 5

MATCH LINE - SEE SHEET 3

MAIN ENTRANCE
SEE DETAIL SHEET 6



NO.	DATE
10	01.28.19
9	01.04.19
8	12.07.18
7	10.18.18
6	10.02.18
5	9.28.18
4	7.30.18
3	7.06.18
2	6.04.18
1	5.15.18

DATE	3.26.18
PROJECT NO.	DR1705
DRAWN	MGM
CHECKED	JCT
SHEET NO.	



GARY R. WEBER
ASSOCIATES, INC.
LAND PLANNING
ECOLOGICAL CONSULTING
LANDSCAPE ARCHITECTURE
402 WEST LIBERTY DRIVE
WHEATON, ILLINOIS 60187
PHONE: 630-668-7197

CLIENTS
D.R. HORTON
America's Builder
750 E. BUNKER COURT, SUITE 500
VERNON HILLS, IL 60061

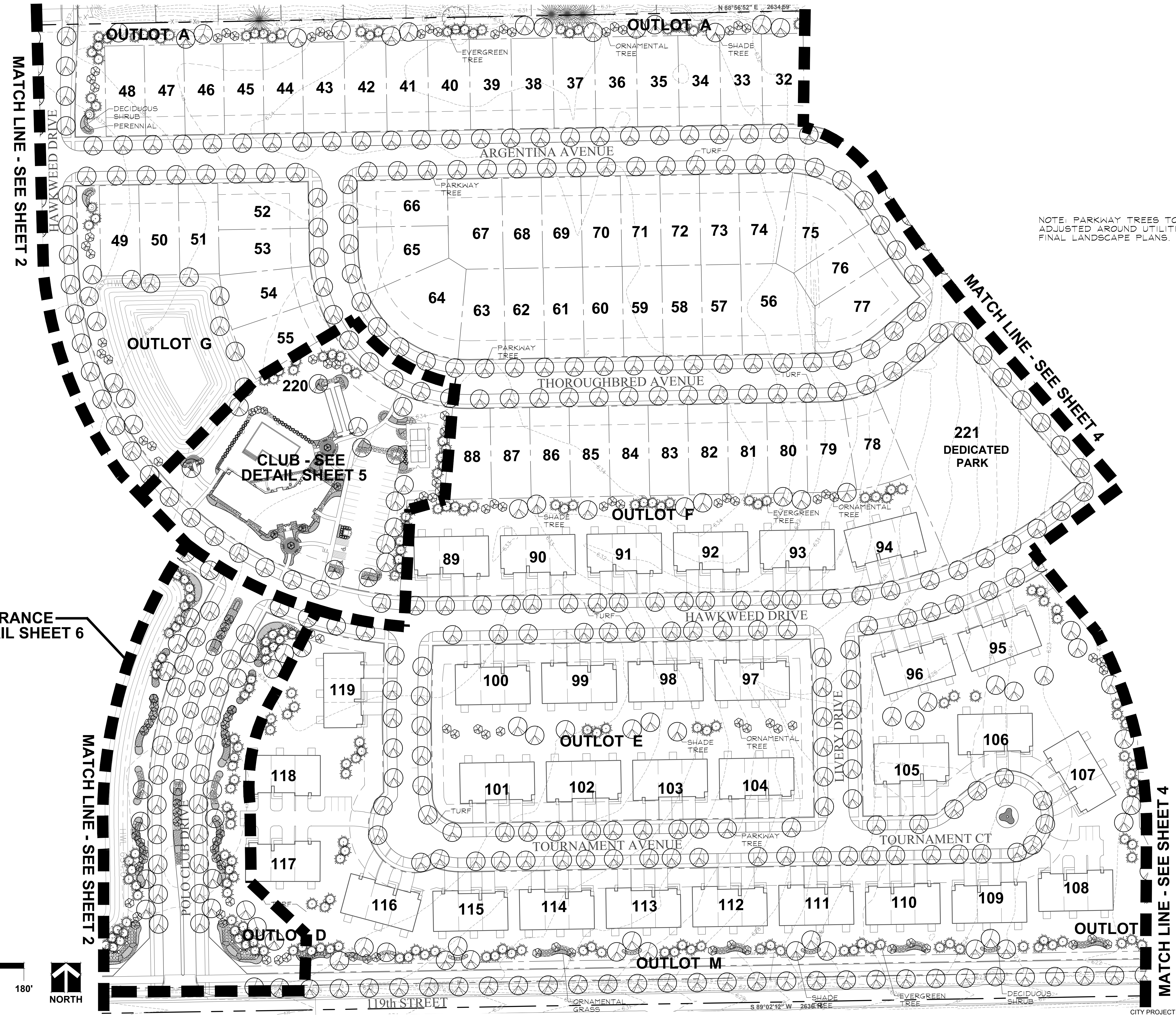
ENGINEER
CEMCON, LTD.
2280 WHITE OAK CIR, SUITE 100
AURORA, ILLINOIS 60502

POLO CLUB
NAPERVILLE, ILLINOIS
PRELIMINARY LANDSCAPE PLAN

NO.	DATE
10	01.28.19
9	01.04.19
8	12.07.18
7	10.18.18
6	10.02.18
5	9.28.18
4	7.30.18
3	7.06.18
2	6.04.18
1	5.15.18

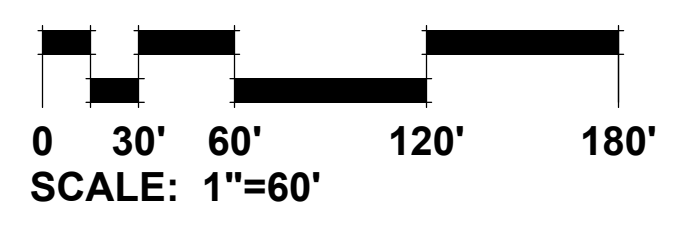
DATE	3.26.18
PROJECT NO.	DR1705
DRAWN	MGM
CHECKED	JCT
SHEET NO.	

3 OF 8



NOTE: PARKWAY TREES TO BE ADJUSTED AROUND UTILITIES ON FINAL LANDSCAPE PLANS.

MAIN ENTRANCE
SEE DETAIL SHEET 6



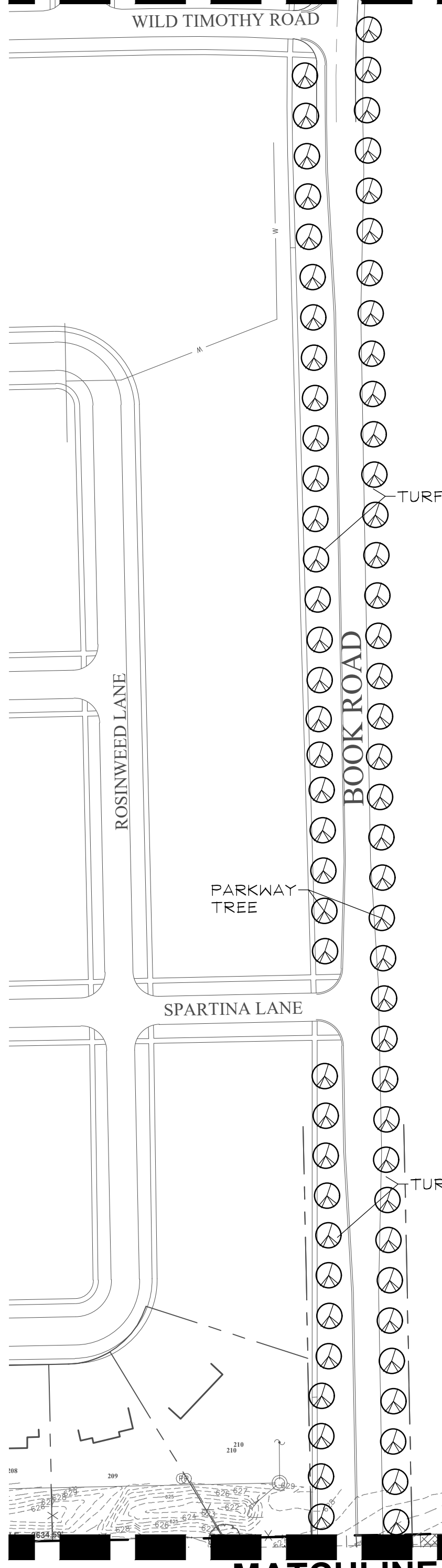
NATIVE SEED LEGEND

☒ NATIVE SEED MIX

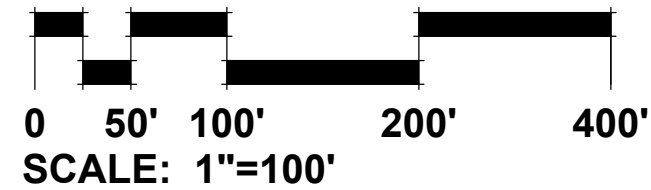
NOTE:

1. PARKWAY TREES TO BE ADJUSTED AROUND UTILITIES ON FINAL LANDSCAPE PLANS.
2. PARKWAY TREES TO CONTINUE ON BOTH SIDES OF BOOK ROAD TO 111TH STREET SPACED 40' O.C. PARKWAY TREES TO BE LOCATED ON FINAL LANDSCAPE PLANS.

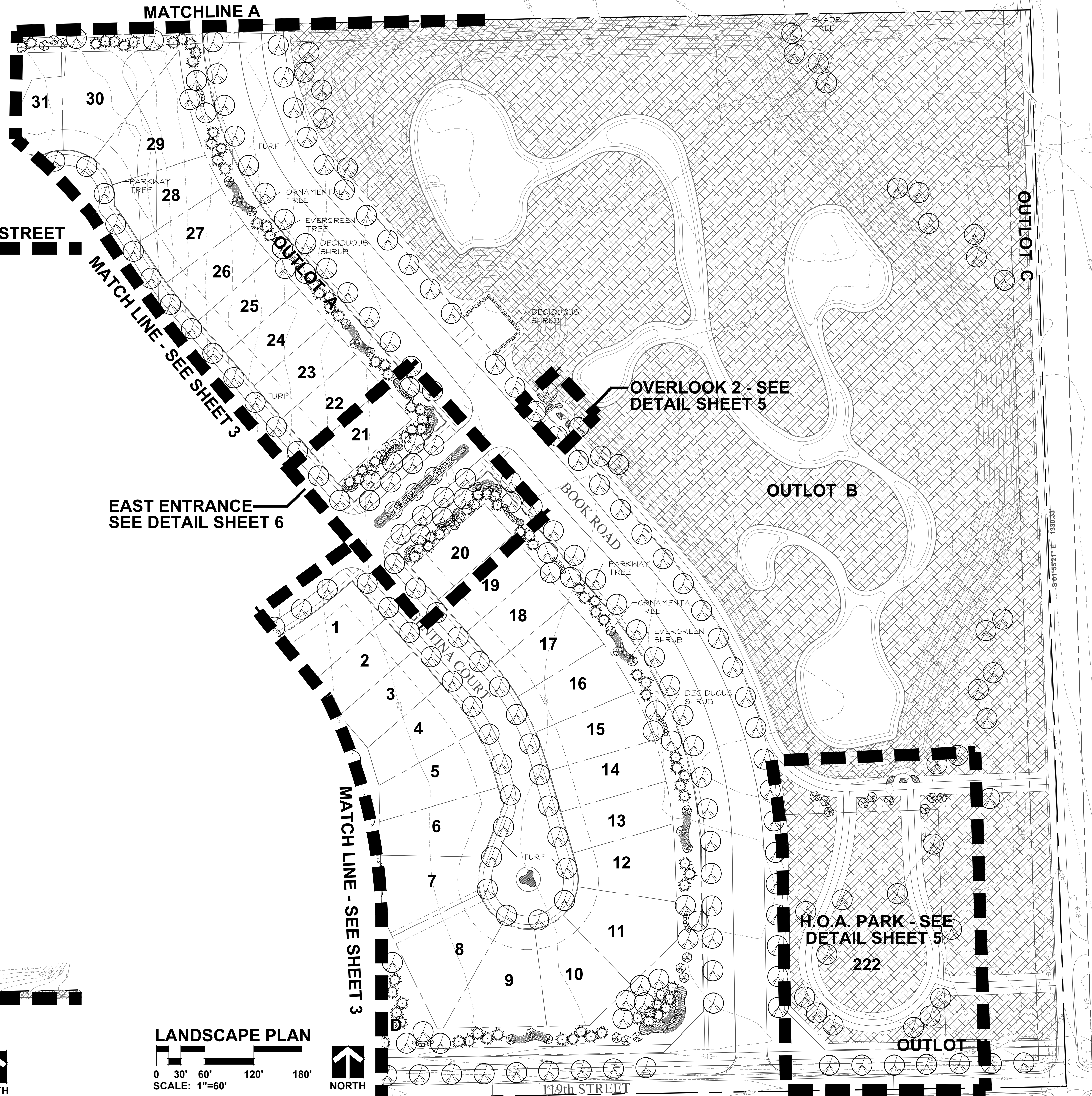
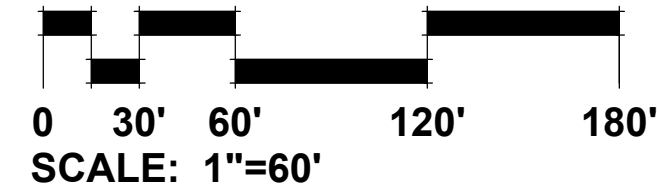
BOOK RD CONT. TO 111TH STREET



BOOK ROAD EXTENSION



LANDSCAPE PLAN



GARY R. WEBER ASSOCIATES, INC.
 LAND PLANNING
 ECOLOGICAL CONSULTING
 LANDSCAPE ARCHITECTURE
 402 WEST LIBERTY DRIVE
 WHEATON, ILLINOIS 60187
 PHONE: 630-668-7197

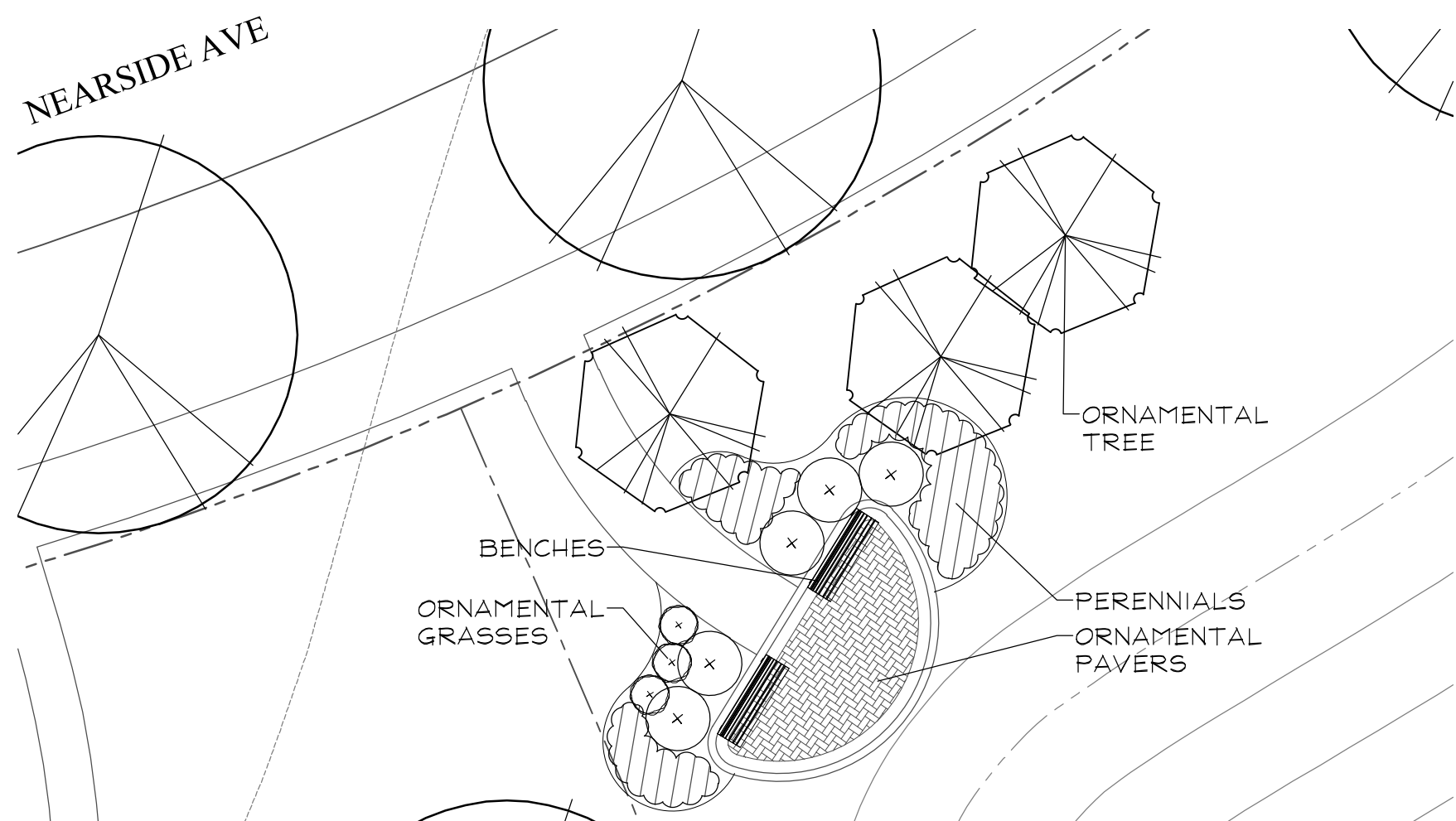
CLIENTS
D.R. HORTON
America's Builder
 750 E. BUNKER COURT, SUITE 100
 VERNON HILLS, IL 60061

ENGINEER
CEMCON, LTD.
 2280 WHITE OAK CIR, SUITE 100
 AURORA, ILLINOIS 60502

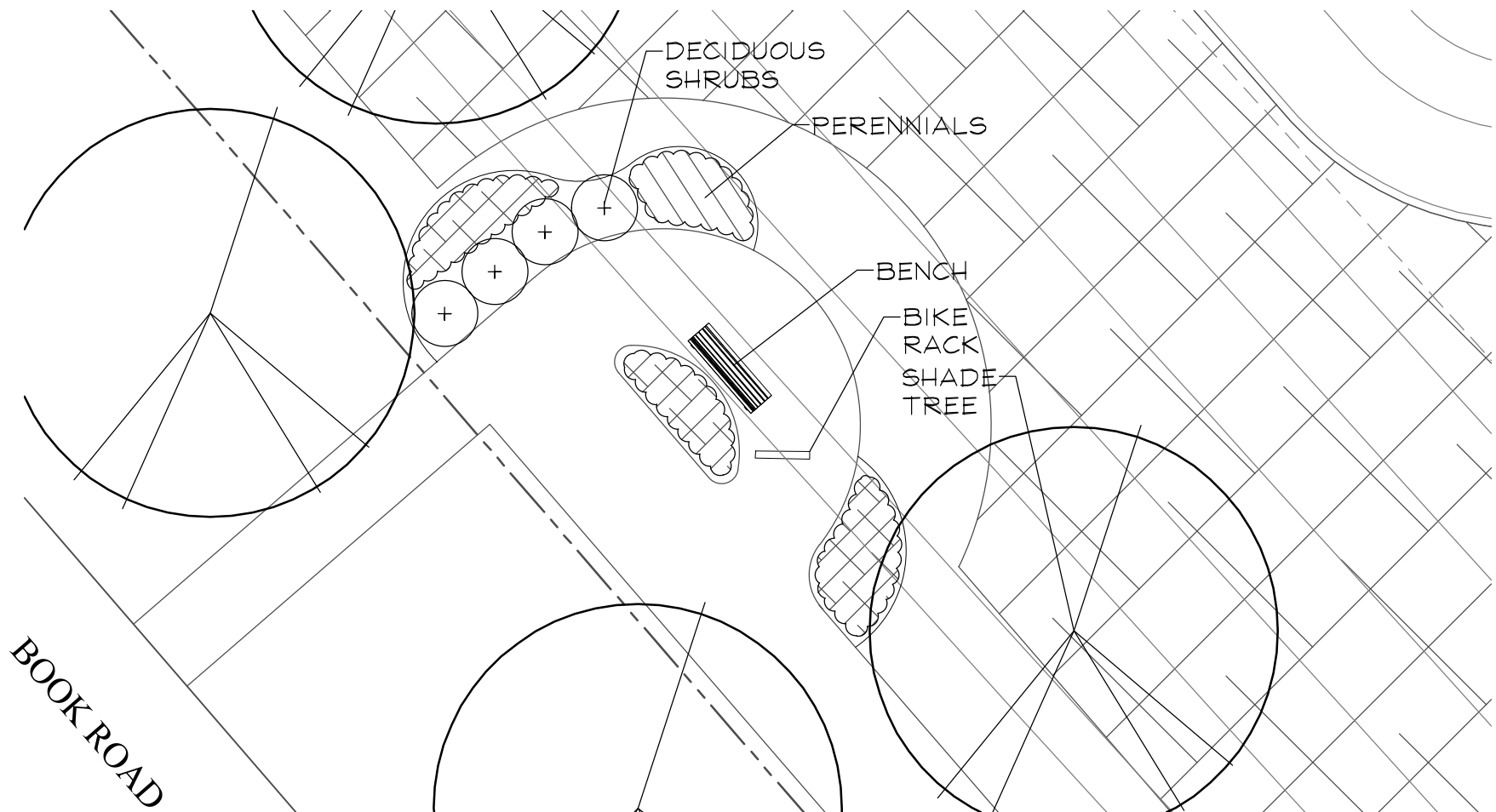
POLO CLUB
 NAPERVILLE, ILLINOIS
PRELIMINARY LANDSCAPE PLAN

NO.	DATE
10	01.28.19
9	01.04.19
8	12.07.18
7	10.18.18
6	10.02.18
5	9.28.18
4	7.30.18
3	7.06.18
2	6.04.18
1	5.15.18

DATE 3.26.18
 PROJECT NO. DR1705
 DRAWN MGM
 CHECKED JCT
 SHEET NO.



OVERLOOK 1 LANDSCAPE DETAIL
SCALE: 1"=10'

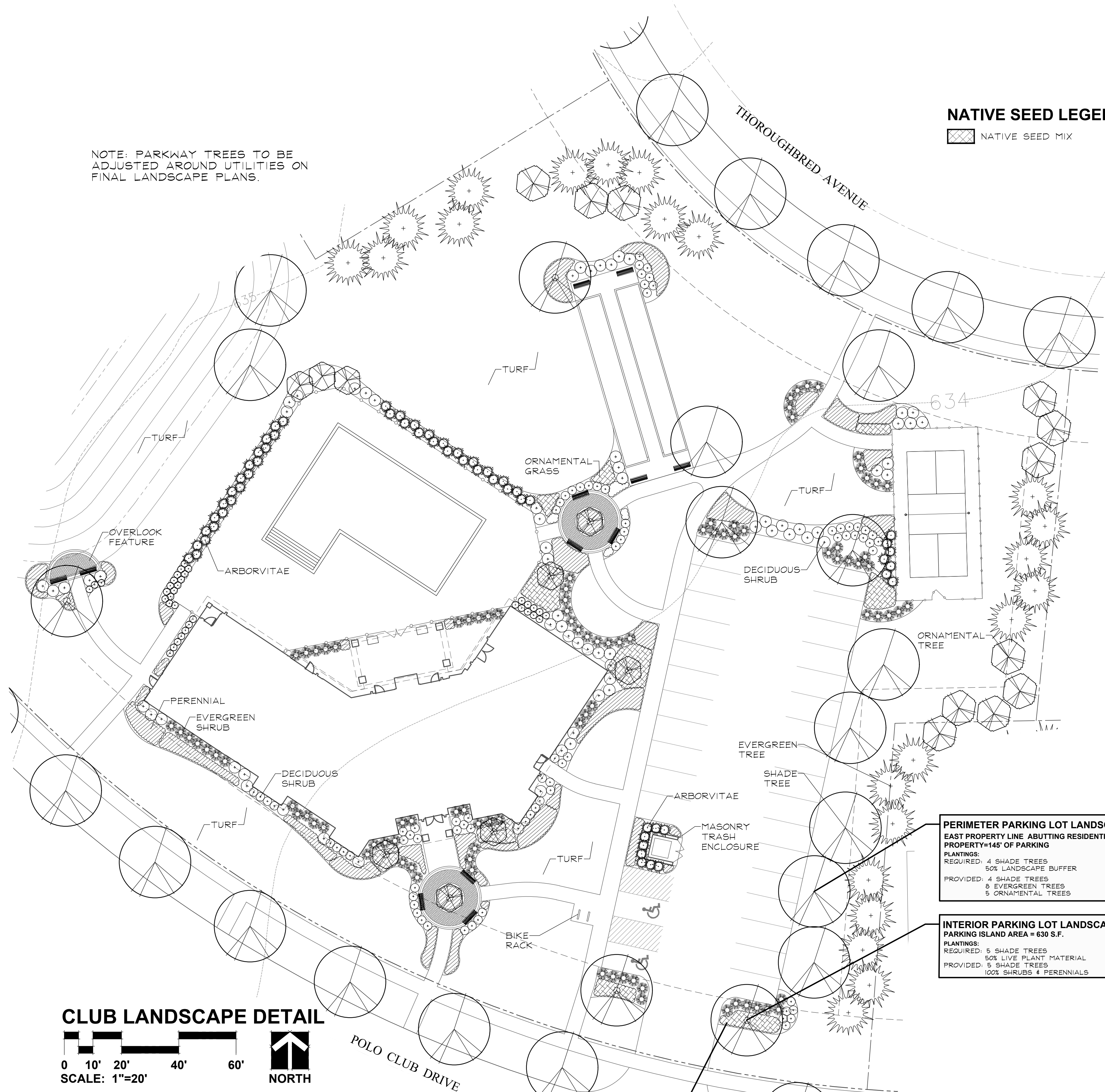


OVERLOOK 2 LANDSCAPE DETAIL
SCALE: 1"=10'

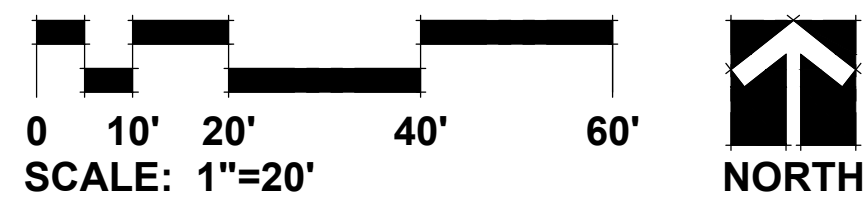


H.O.A. PARK DETAIL
SCALE: 1"=40'

NOTE: PARKWAY TREES TO BE ADJUSTED AROUND UTILITIES ON FINAL LANDSCAPE PLANS.



CLUB LANDSCAPE DETAIL



NATIVE SEED LEGEND

☒ NATIVE SEED MIX

PERIMETER PARKING LOT LANDSCAPING
SOUTH PROPERTY LINE ACROSS FROM RESIDENTIAL
PROPERTY=62' OF PARKING
PLANTINGS:
REQUIRED: 100% LANDSCAPE BUFFER
PROVIDED: 100% LANDSCAPE BUFFER

PERIMETER PARKING LOT LANDSCAPING
EAST PROPERTY LINE ABUTTING RESIDENTIAL
PROPERTY=145' OF PARKING
PLANTINGS:
REQUIRED: 4 SHADE TREES
50% LANDSCAPE BUFFER
PROVIDED: 4 SHADE TREES
6 EVERGREEN TREES
5 ORNAMENTAL TREES

INTERIOR PARKING LOT LANDSCAPING
PARKING ISLAND AREA = 630 S.F.
PLANTINGS:
REQUIRED: 5 SHADE TREES
50% LIVE PLANT MATERIAL
PROVIDED: 5 SHADE TREES
100% SHRUBS & PERENNIALS

POLO CLUB
NAPERVILLE, ILLINOIS
LANDSCAPE DETAILS

10	01.28.19
9	01.04.19
8	12.07.18
7	10.18.18
6	10.02.18
5	9.28.18
4	7.30.18
3	7.06.18
2	6.04.18
1	5.15.18

REVISIONS

DATE	3.26.18
PROJECT NO.	DR1705
DRAWN	MGH
CHECKED	JCT
SHEET NO.	





GARY R. WEBER
ASSOCIATES, INC.
LAND PLANNING
ECOLOGICAL CONSULTING
LANDSCAPE ARCHITECTURE
402 WEST LIBERTY DRIVE
WHEATON, ILLINOIS 60187
PHONE: 630-668-7197

CLIENTS

D-R-HORTON

America's Builder
750 E. BUNKER COURT, SUITE 500
VERNON HILLS, IL 60061

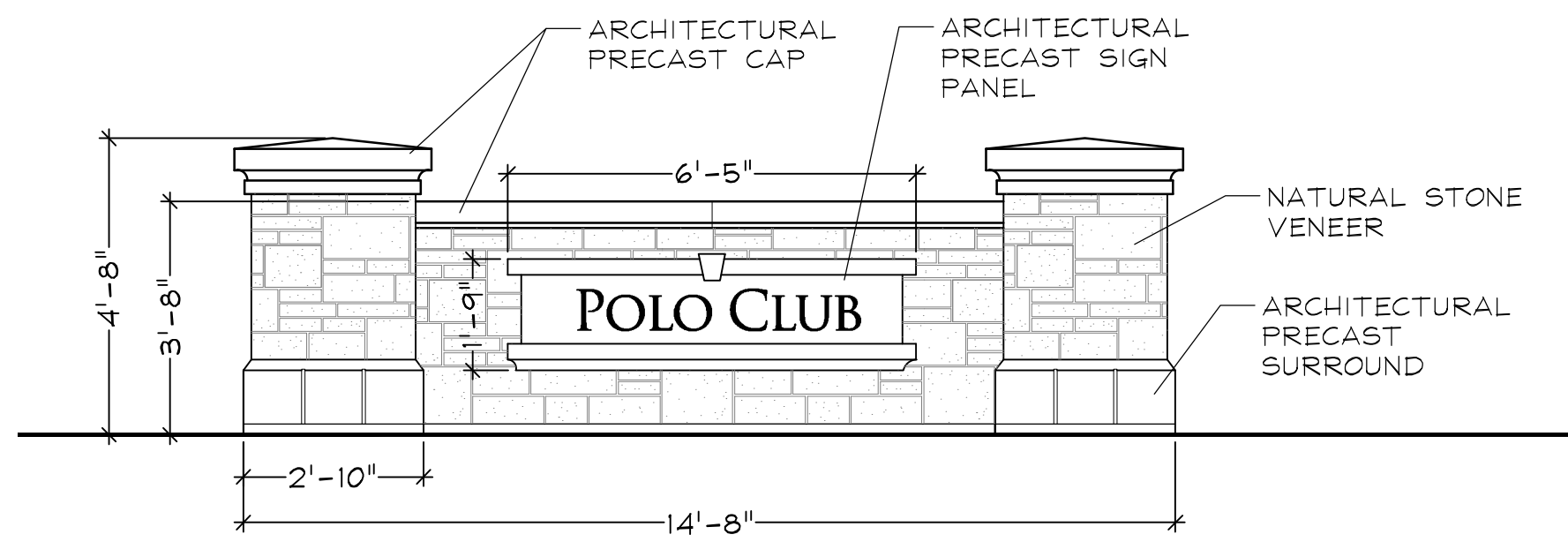
ENGINEER

CEMCON, LTD.
2280 WHITE OAK CIR, SUITE 100
AURORA, ILLINOIS 60502

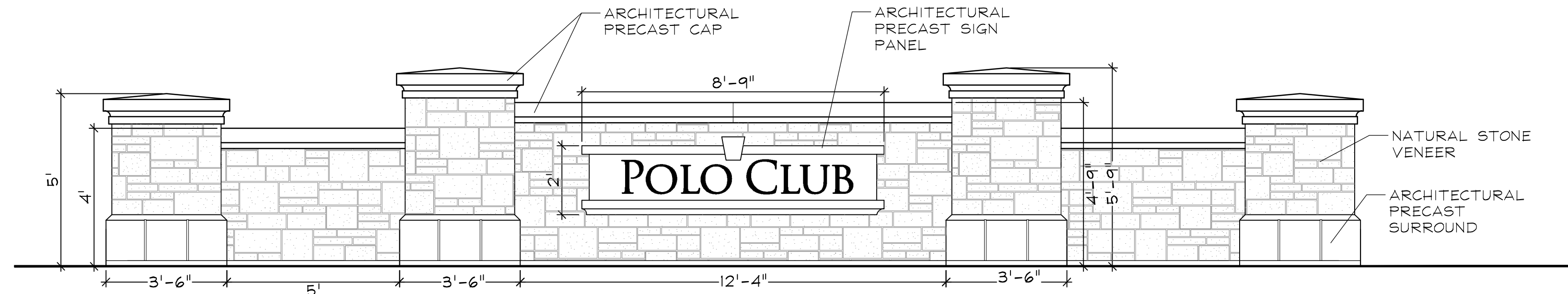
POLO CLUB

NAPERVILLE, ILLINOIS

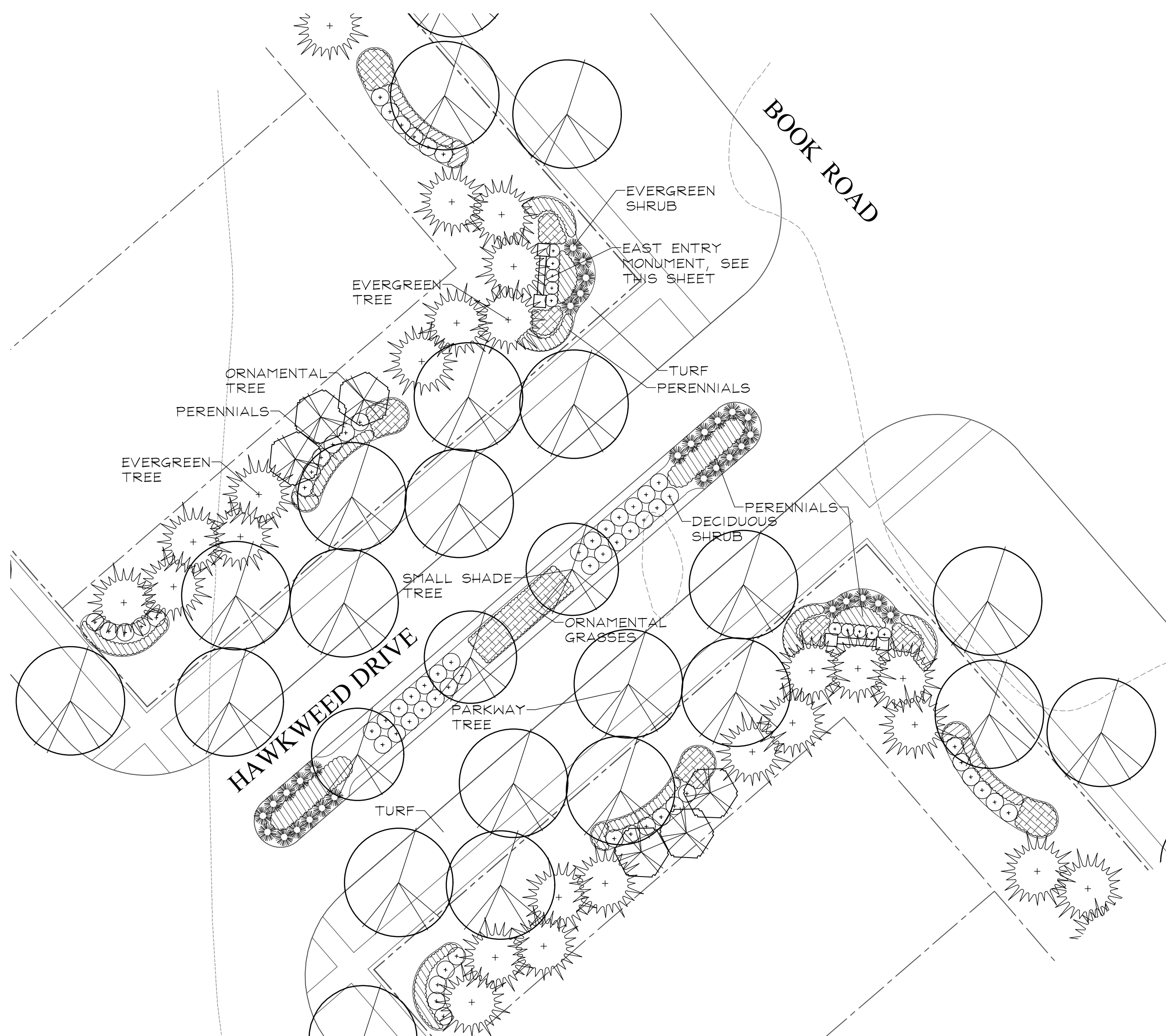
LANDSCAPE DETAILS



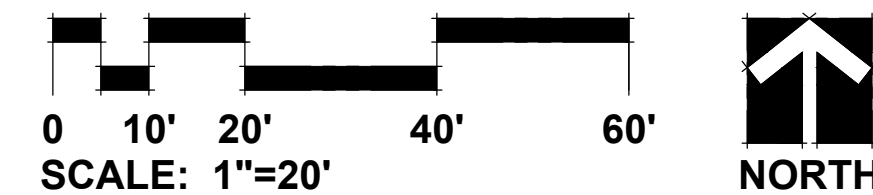
EAST ENTRY MONUMENT ELEVATION
SCALE: 3/8"=1'



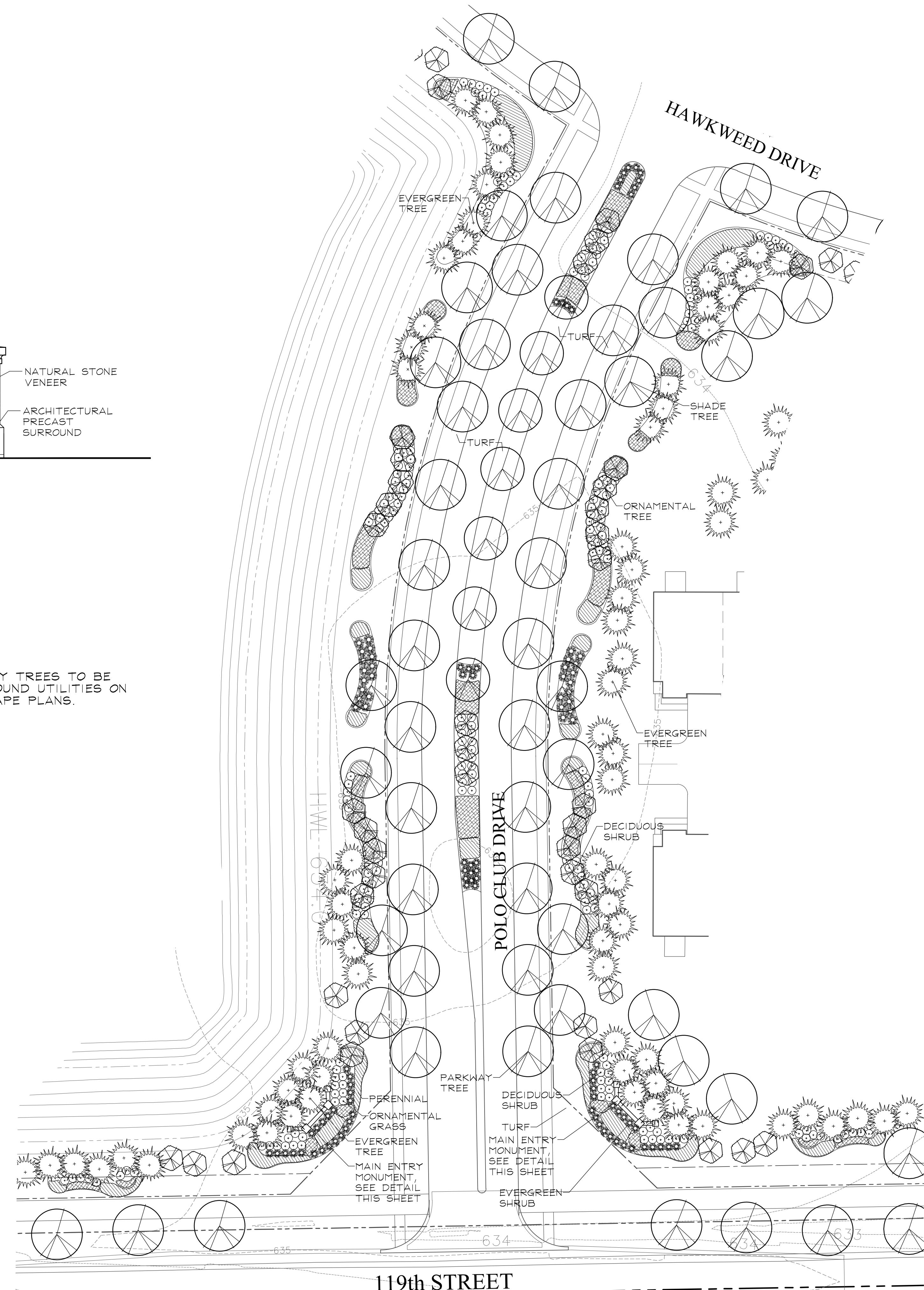
MAIN ENTRY MONUMENT ELEVATION
SCALE: 3/8"=1'



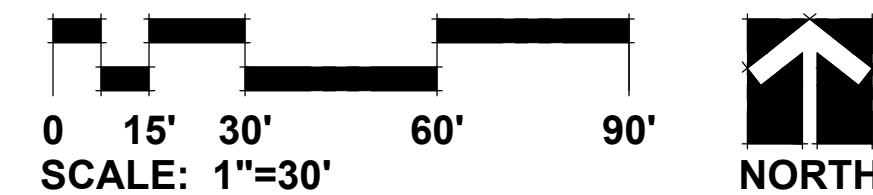
EAST ENTRANCE LANDSCAPE DETAIL



NOTE: PARKWAY TREES TO BE ADJUSTED AROUND UTILITIES ON FINAL LANDSCAPE PLANS.



MAIN ENTRANCE LANDSCAPE DETAIL



NO.	REVISIONS	DATE
10		01.28.19
9		01.04.19
8		12.07.18
7		10.18.18
6		10.02.18
5		9.28.18
4		7.30.18
3		7.06.18
2		6.04.18
1		5.15.18

DATE	3.26.18
PROJECT NO.	DR1705
DRAWN	MGM
CHECKED	JCT
SHEET NO.	

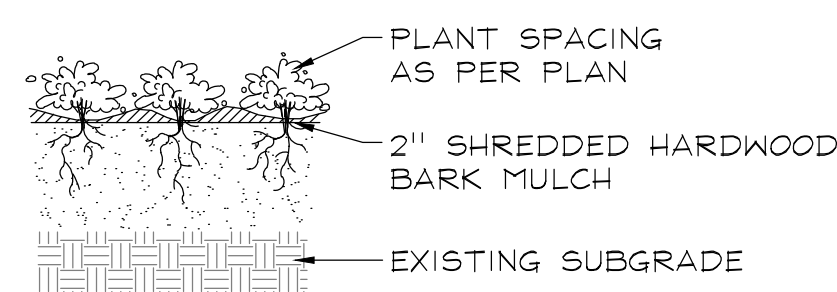
6 OF 8

CITY PROJECT NUMBER: #18-1000022

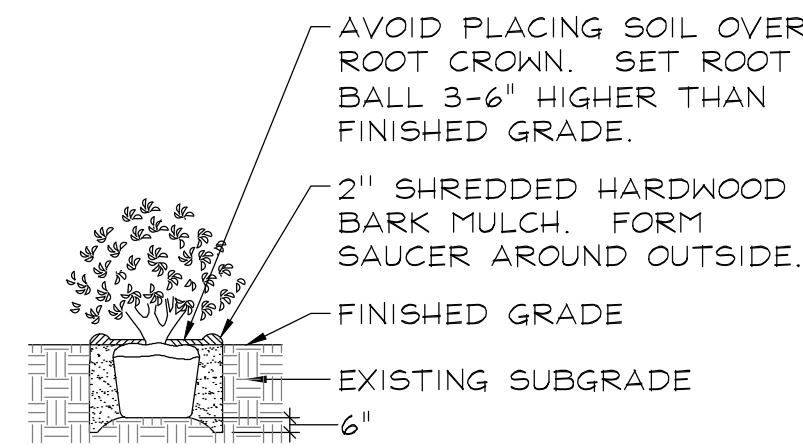


Keep what's below. Call before you dig.

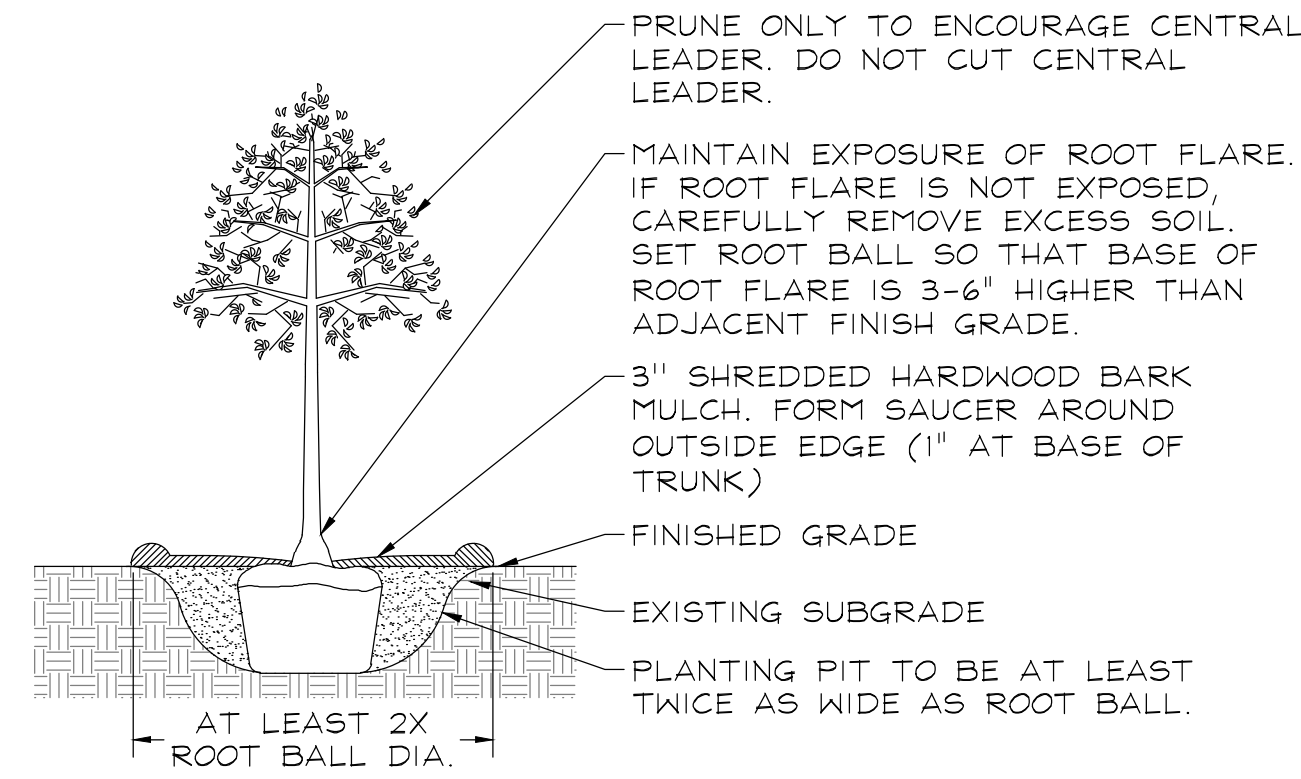
PLANTING DETAILS



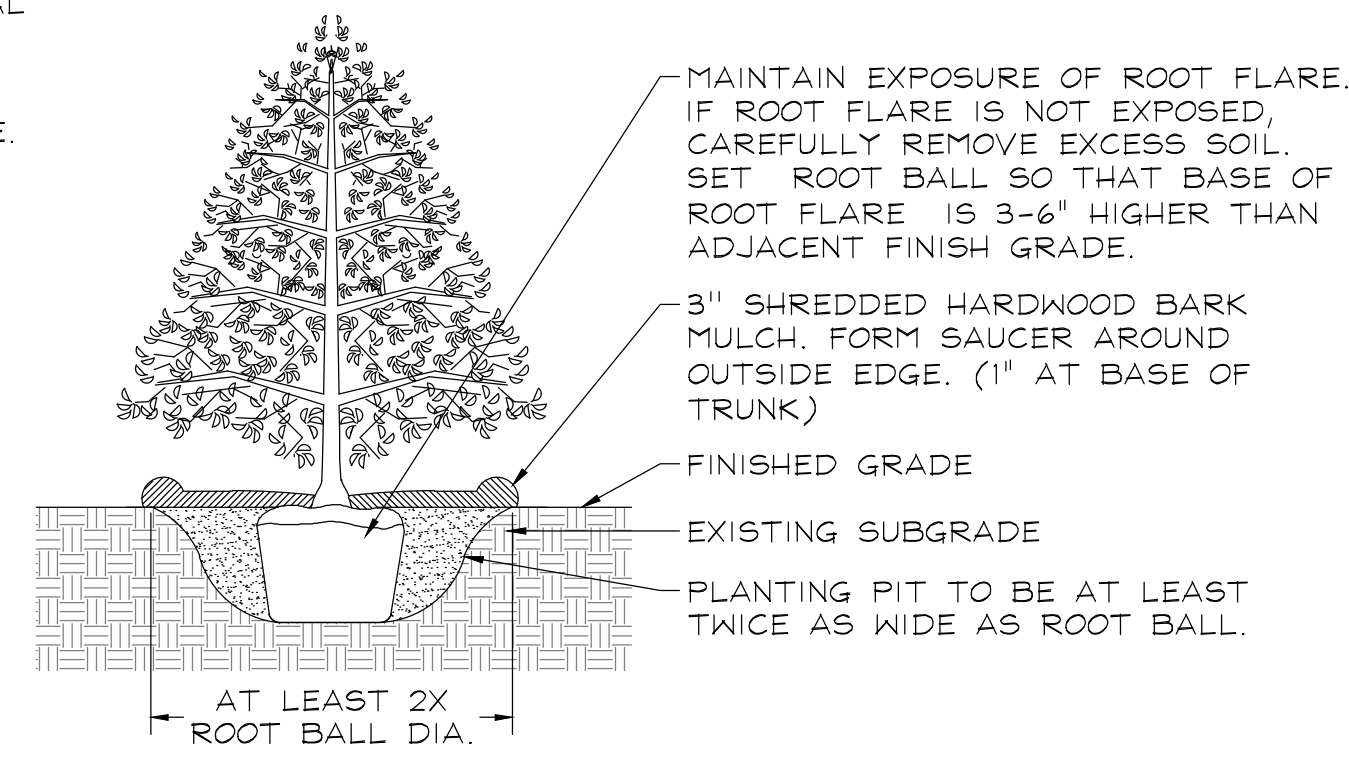
PERENNIALS AND GROUNDCOVERS
NOT TO SCALE



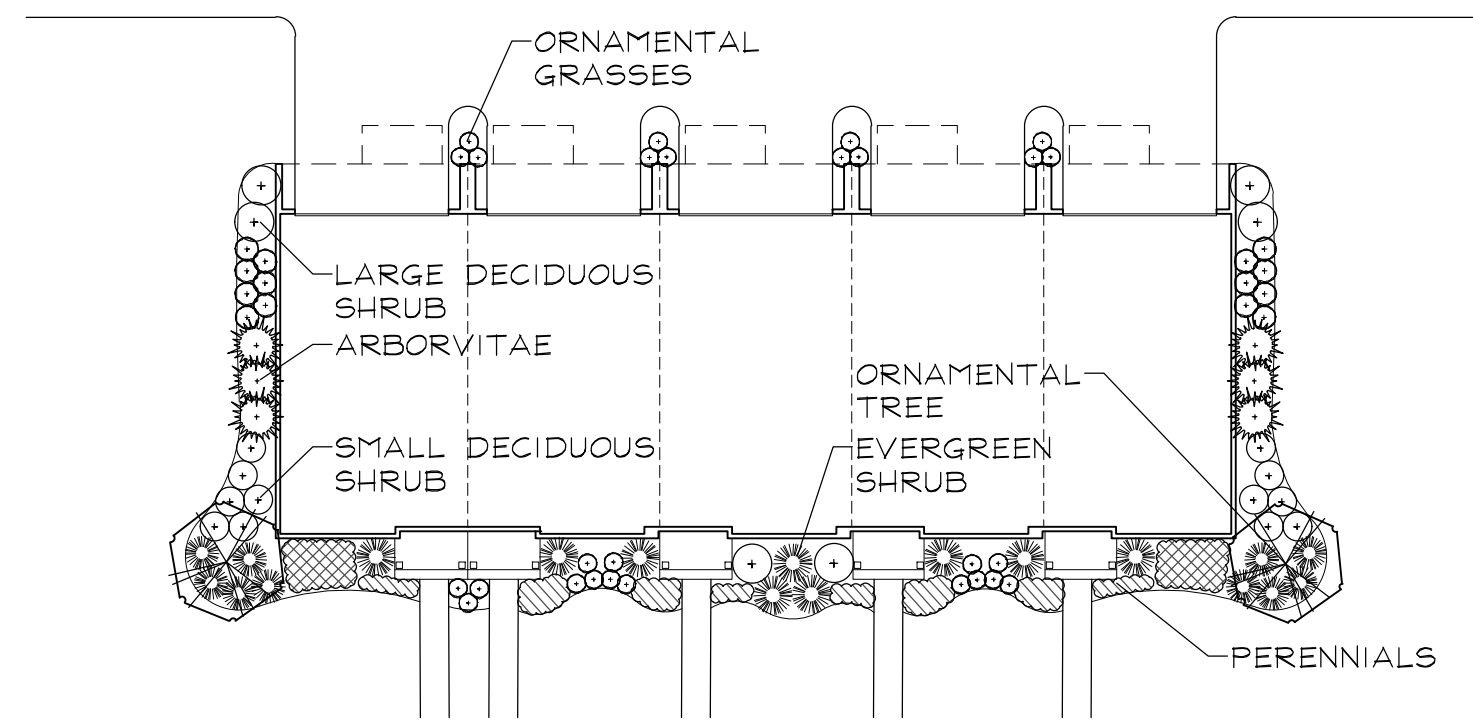
DECIDUOUS AND EVERGREEN SHRUBS
NOT TO SCALE



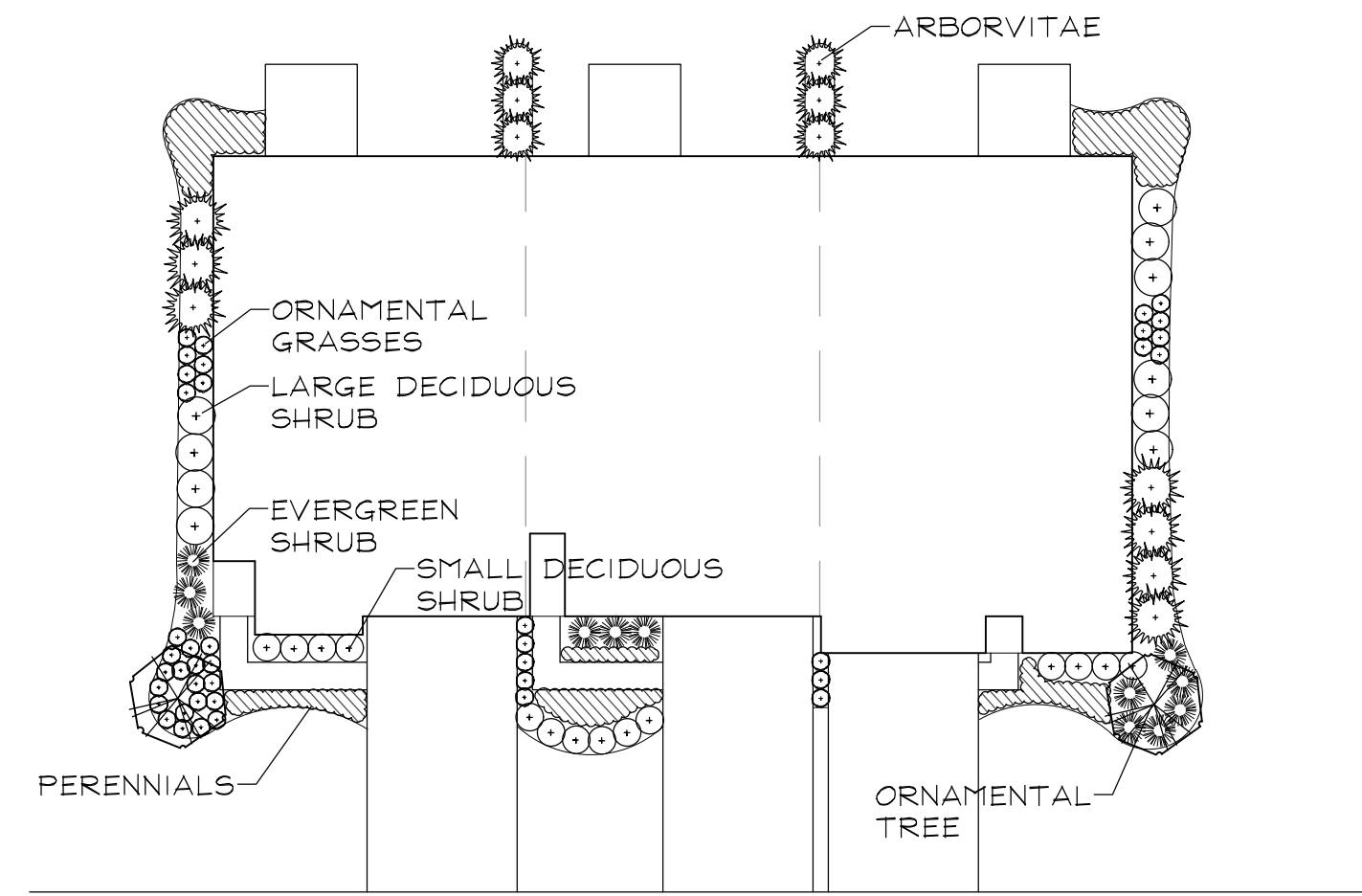
DECIDUOUS TREES
NOT TO SCALE



EVERGREEN TREES
NOT TO SCALE



TYPICAL SEABOARD TOWNHOME FOUNDATION LANDSCAPE PLAN
SCALE: 1"=20'



TYPICAL AGE-TARGETED RANCH TOWNHOME FOUNDATION LANDSCAPE PLAN
SCALE: 1"=20'

FOUNDATION PLAN REPRESENTATIVE PLANT LIST

Key	Botanical/Common Name	Size	Remarks	
[Tree Symbol]	ORNAMENTAL TREES			
	Amelanchier grandiflora APPLE SERVICEBERRY	6' Tall	Multi-Stem	
	Cornus mas CORNELIANCHERRY DOGWOOD	6' Tall	Multi-Stem	
	Magnolia stellata 'Royal Star' ROYAL STAR MAGNOLIA	6' Tall	Multi-Stem	
	Syringa pekinensis 'Morton' CHINA SNOW PEKING LILAC	6' Tall	Multi-Stem	
[Shrub Symbol]	DECIDUOUS SHRUBS			
	Hydrangea macrophylla 'Bailmer' ENDLESS SUMMER HYDRANGEA	24" Wide	3' O.C.	
	Rhus aromatica 'Gro-low' GRO-LOW FRAGRANT SUMAC	24" Wide	3' O.C.	
	Spiraea betulifolia 'Tor' BIRCHLEAF SPIREA	24" Tall	3' O.C.	
	Spiraea nipponica 'Snowmound' SNOWMOUND SPIREA	30" Wide	4' O.C.	
	Syringa patula 'Miss Kim' MISS KIM LILAC	30" Tall	4' O.C.	
	Viburnum x juddii JUDD VIBURNUM	36" Tall	4' O.C.	
	Viburnum trilobum 'Redwing' HIGHBUSH CRANBERRY VIBURNUM	36" Tall	4' O.C.	
	Weigela florida 'Verweil-4' SONIC BOOM RED WEIGELA	24" Tall	4' O.C.	
	[Shrub Symbol]	EVERGREEN SHRUBS		
Juniperus chinensis var. sargentii 'Glauc' BLUE SARGENT JUNIPER		24" Wide 6" Tall	4' O.C.	
Taxus x media 'Densiformis' DENSE YEW		24" Wide	3' O.C.	
Thuja occidentalis 'Smaragd' EMERALD GREEN ARBORVITAE		4' Tall	3' O.C.	
[Grass/Perennial Symbol]		ORNAMENTAL GRASSES & PERENNIALS		
	Calamagrostis x acutiflora 'Overdam' WHITE FEATHER REED GRASS	#1	30" O.C.	
	Careopsis 'Jethro Tull' JETHRO TULL COREOPSIS	#1	18" O.C.	
	Echinacea purpurea PURPLE CONEFLOWER	#1	18" O.C.	
	Hemerocallis 'Pardon Me' PARDON ME DAYLILY	#1	18" O.C.	
	Hosta 'Patriot' PATRIOT HOSTA	#1	24" O.C.	
	Pennisetum alopecuroides 'Hameln' DWARF FOUNTAIN GRASS	#1	24" O.C.	
	[Groundcover Symbol]	GROUNDCOVERS		
		Geranium sanguineum var. striatum STRIATUM BLOODY CRANESBILL	#SP4	12" O.C.
		Vinca minor 'Dart's Blue' DART'S BLUE PERIWINKLE	#SP4	12" O.C.

REVISIONS

10	01.28.19
9	01.04.19
8	12.07.18
7	10.18.18
6	10.02.18
5	9.28.18
4	7.30.18
3	7.06.18
2	6.04.18
1	5.15.18

DATE	3.26.18
PROJECT NO.	DR1705
DRAWN	MGM
CHECKED	JCT
SHEET NO.	





GARY R. WEBER
ASSOCIATES, INC.
LAND PLANNING
ECOLOGICAL CONSULTING
LANDSCAPE ARCHITECTURE
402 WEST LIBERTY DRIVE
WHEATON, ILLINOIS 60187
PHONE: 630-668-7197

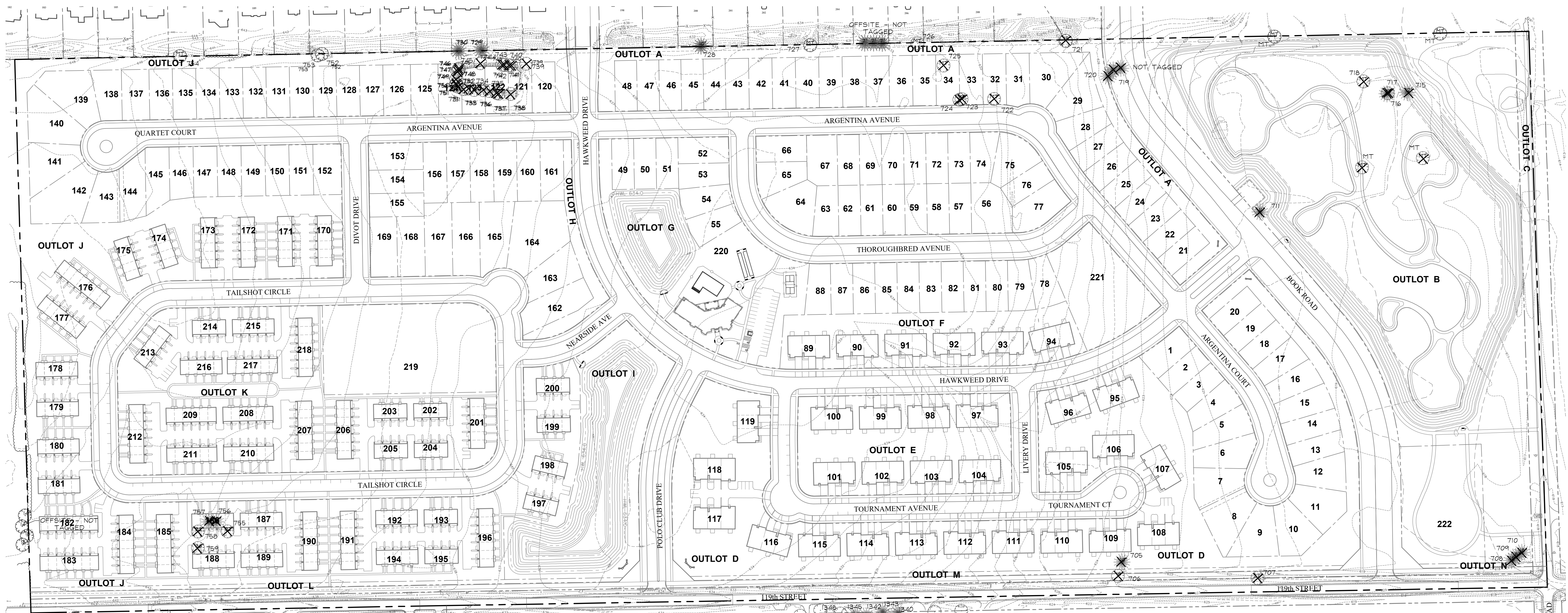
CLIENTS

D.R. HORTON
America's Builder
750 E. BUNKER COURT, SUITE 500
VERNON HILLS, IL 60061

ENGINEER

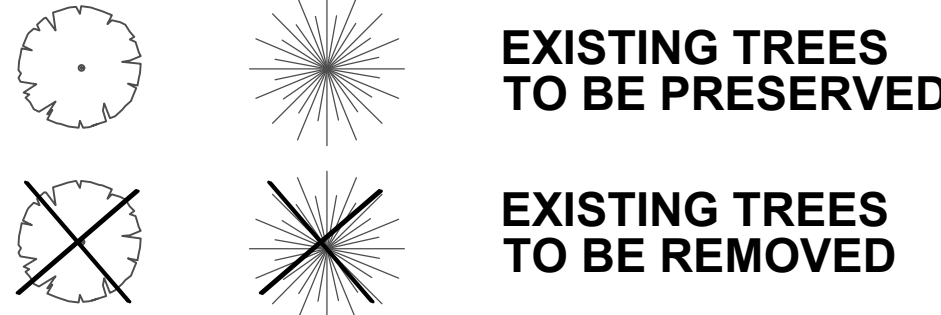
CEMCON, LTD.
2280 WHITE OAK CIR, SUITE 100
AURORA, ILLINOIS 60502

POLO CLUB
NAPERVILLE, ILLINOIS
TREE PRESERVATION PLAN



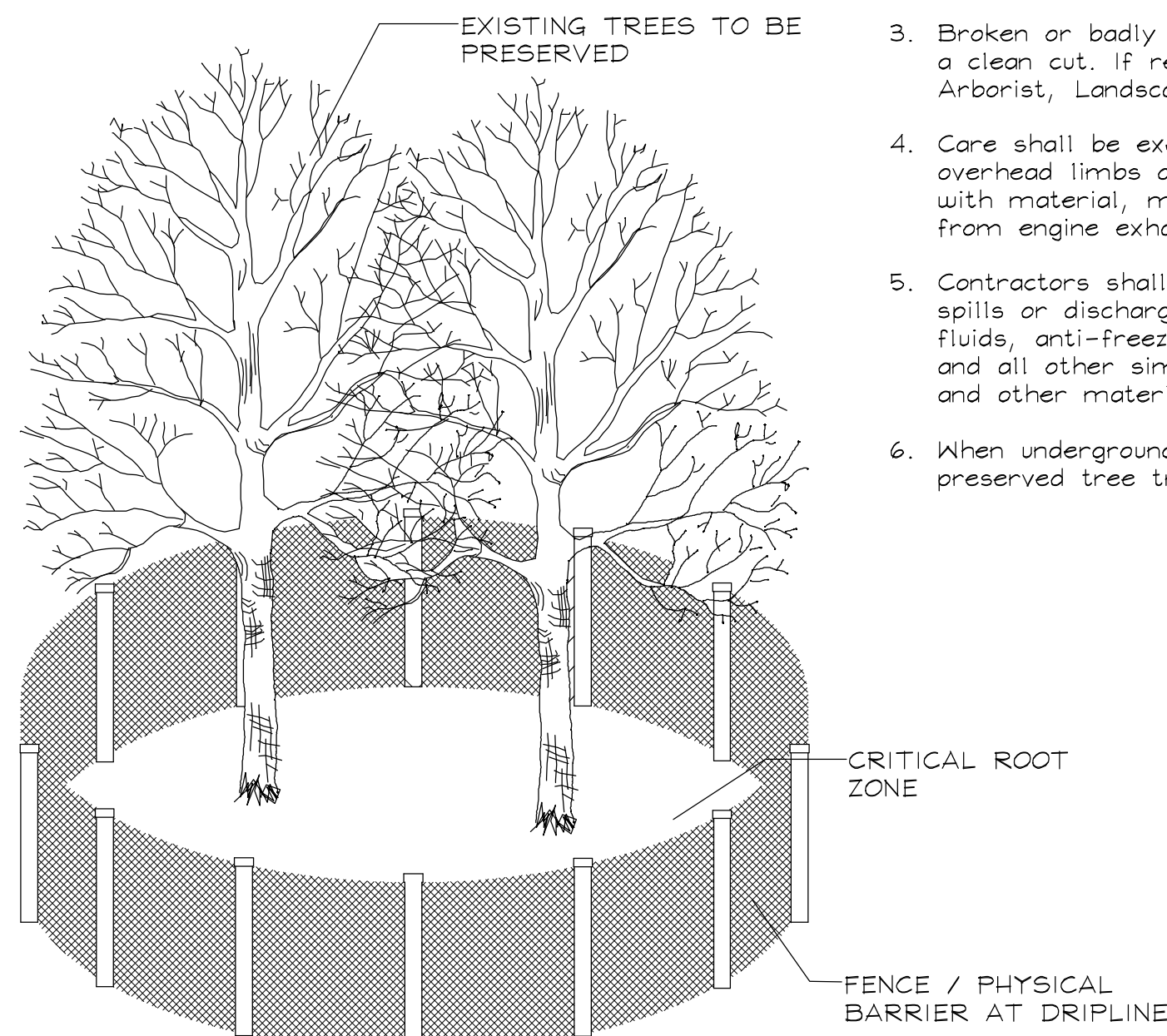
LEGEND

DECIDUOUS EVERGREEN



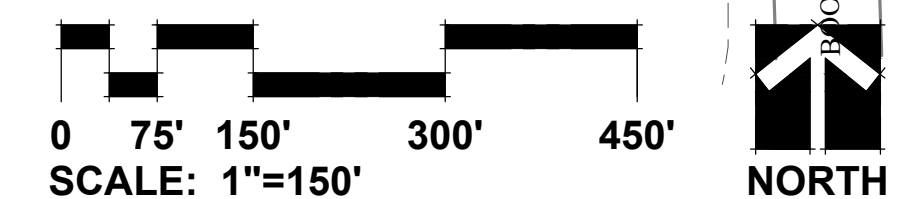
TREE PRESERVATION NOTES

- 48" high snow fence or wood barriers shall extend to the dripline of the tree or tree mass whenever possible, shall be installed before construction begins, and should not be removed until the completion of construction.
- All accidental damage to existing trees that are to be preserved shall be promptly treated as required in accordance with recognized horticultural practices and the instructions of the professional Arborist, Landscape Architect or Horticulturist.
- Broken or badly bruised branches shall be removed with a clean cut. It is recommended by the professional Arborist, Landscape Architect or Horticulturist.
- Care shall be exercised by the contractors to protect all overhead limbs and branches from damage by contact with material, machinery or equipment and by damage from engine exhaust.
- Contractors shall protect trees and vegetation against spills or discharge of fuels, lubricating oils, hydraulic fluids, anti-freeze and coolants, calcium chloride, lime and all other similar hydrocarbons, organic chemicals, and other materials which can be harmful.
- When underground utilities are proposed within 5' of a preserved tree trunk, they must be augered if possible.



TREE PRESERVATION DETAIL

NOTE: TREES NUMBERED 1337-1349 SHOWN AT APPROXIMATE LOCATION ONLY. TREES TO BE SURVEYED AT FINAL



TREE INVENTORY

TAG NO.	BOTANICAL NAME	COMMON NAME	SIZE	HEALTH/STRUCTURE	PROPOSED ACTION
705	<i>Picea abies</i>	Norway Spruce	8"	Good	Remove
706	<i>Acer rubra</i>	Red Maple	10"	Good	Remove
707	<i>Morus rubra</i>	Mulberry	14"	Poor; Missing/Dead Limbs	Remove
708	<i>Picea abies</i>	Norway Spruce	10"	Fair; Crowded	Remove
709	<i>Picea abies</i>	Norway Spruce	7"	Fair; Crowded	Remove
710	<i>Picea abies</i>	Norway Spruce	14"	Fair; Crowded	Remove
711	<i>Pinus nigra</i>	Austrian Pine	10"	Poor; Leaning	Remove
712	<i>Malus</i>	Apple/Crab	12"	Poor; Missing/Dead Limbs	Remove
713	<i>Pinus nigra</i>	Austrian Pine	6"	Poor; Crowded	Remove
714	<i>Salix nigra</i>	Black Willow	14", 10", 12"	Poor; Missing/Dead Limbs	Remove
715	<i>Pinus nigra</i>	Austrian Pine	10"	Poor; Missing/Dead Limbs	Remove
716	<i>Morus rubra</i>	Mulberry	14"	Poor; Missing/Dead Limbs	Remove
717	<i>Pinus nigra</i>	Austrian Pine	10"	Poor; Missing/Dead Limbs	Remove
718	<i>Salix nigra</i>	Black Willow	20"	Poor; Missing/Dead Limbs	Remove
719	<i>Picea abies</i>	Norway Spruce	10"	Fair	Remove
720	<i>Picea abies</i>	Norway Spruce	14"	Fair	Remove
721	<i>Malus</i>	Apple/Crab	14"	Poor; Missing/Dead Limbs	Remove
722	<i>Morus rubra</i>	Mulberry	10"	Poor; Missing/Dead Limbs	Remove
723	<i>Salix nigra</i>	Black Willow	10", 6"	Poor; Leaning	Remove
724	<i>Salix nigra</i>	Black Willow	10"	Poor; Crowded	Remove
725	<i>Acer rubra</i>	Red Maple	10", 14"	Poor; Split Risk	Remove
726	<i>Acer rubra</i>	Red Maple	50", 34"	Fair; Split Risk	Preserve
727	<i>Acer rubra</i>	Red Maple	24", 20", 27"	Good	Preserve
728	<i>Pinus nigra</i>	Austrian Pine	9"	Fair; Missing/Dead Limbs	Off Site
729	<i>Pinus strobus</i>	White Pine	7"	Good	Off Site
730	<i>Pinus strobus</i>	White Pine	9"	Good	Off Site
731	<i>Populus deltoides</i>	Eastern Cottonwood	16"	Poor; Leaning	Remove
732	<i>Populus deltoides</i>	Eastern Cottonwood	16"	Poor; Leaning	Remove
733	<i>Populus deltoides</i>	Eastern Cottonwood	14", 10"	Poor; Split Risk	Remove
734	<i>Populus deltoides</i>	Eastern Cottonwood	10", 12", 6"	Poor; Split Risk	Remove
735	<i>Populus deltoides</i>	Eastern Cottonwood	12"	Poor; Leaning	Remove
736	<i>Populus deltoides</i>	Eastern Cottonwood	16"	Fair	Remove
737	<i>Populus deltoides</i>	Eastern Cottonwood	18"	Poor; Leaning	Remove
738	<i>Salix nigra</i>	Black Willow	6", 8", 12"	Poor; Split Risk	Remove

TAG NO.	BOTANICAL NAME	COMMON NAME	SIZE	HEALTH/STRUCTURE	PROPOSED ACTION
739	<i>Populus deltoides</i>	Eastern Cottonwood	6", 8"	Poor; Split Risk	Remove
740	<i>Populus deltoides</i>	Eastern Cottonwood	6", 12", 10"	Poor; Split Risk	Remove
741	<i>Populus deltoides</i>	Eastern Cottonwood	32"	Poor; Leaning	Remove
742	<i>Populus deltoides</i>	Eastern Cottonwood	12", 12"	Poor; Split Risk	Remove
743	<i>Morus rubra</i>	Mulberry	4", 4", 4"	Poor; Missing/Dead Limbs	Remove
744	<i>Malus</i>	Apple/Crab	5"	Good	Remove
745	<i>Populus deltoides</i>	Eastern Cottonwood	16"	Poor; Leaning	Remove
746	<i>Populus deltoides</i>	Eastern Cottonwood	18"	Poor; Leaning	Remove
747	<i>Populus deltoides</i>	Eastern Cottonwood	6"	Poor; Leaning	Remove
748	<i>Populus deltoides</i>	Eastern Cottonwood	14"	Poor; Leaning	Remove
749	<i>Populus deltoides</i>	Eastern Cottonwood	12"	Poor; Leaning	Remove
750	<i>Populus deltoides</i>	Eastern Cottonwood	16"	Poor; Leaning	Remove
751	<i>Populus deltoides</i>	Eastern Cottonwood	30"	Poor; Leaning	Remove
752	<i>Acer negundo</i>	Box Elder	6", 7", 6"	Poor; Crowded	Preserve
753	<i>Acer negundo</i>	Box Elder	9", 4", 6"	Poor; Crowded	Preserve
754	<i>Celtis occidentalis</i>	Common Hackberry	16", 14", 12"	Good	Preserve
755	<i>Gleditsia triacanthos</i>	Honey Locust	32"	Fair; Missing/Dead Limbs	Remove
756	<i>Pinus nigra</i>	Austrian Pine	26"	Poor; Missing/Dead Limbs	Remove
757	<i>Pinus nigra</i>	Austrian Pine	24"	Poor; Leaning	Remove
758	<i>Gleditsia triacanthos</i>	Honey Locust	28"	Fair; Missing/Dead Limbs	Remove
759	<i>Gleditsia triacanthos</i>	Honey Locust	44"	Fair; Missing/Dead Limbs	Remove
1337	<i>Quercus macrocarpa</i>	Burr Oak	27	Good	To be determined at final
1338	<i>Quercus macrocarpa</i>	Burr Oak	33	Excellent	To be determined at final
1339	<i>Magnolia sp.</i>	Magnolia	10/16	Poor	To be determined at final
1340	<i>Picea sp.</i>	Spruce	20	Good	To be determined at final
1341	<i>Acer saccharum</i>	Sugar Maple	38	Fair	To be determined at final
1342	<i>Morus alba</i>	White Mulberry	9/5/5	Poor	To be determined at final
1343	<i>Picea sp.</i>	Spruce	12	Good	To be determined at final
1344	<i>Picea sp.</i>	Spruce	18	Good	To be determined at final
1345	<i>Picea sp.</i>	Spruce	21	Good	To be determined at final
1346	<i>Morus alba</i>	White Mulberry	10/5/4/4	Poor	To be determined at final
1347	<i>Acer saccharum</i>	Sugar Maple	44	Good	To be determined at final
1348	<i>Picea sp.</i>	Spruce	34	Good	To be determined at final
1349	<i>Acer saccharum</i>	Sugar Maple	28	Excellent	To be determined at final

NO.	DATE	DESCRIPTION
10	01.28.19	
9	01.04.19	
8	12.07.18	
7	10.18.18	
6	10.02.18	
5	9.28.18	
4	7.30.18	
3	7.06.18	
2	6.04.18	
1	5.15.18	

REVISIONS

DATE 3.26.18
PROJECT NO. DR1705
DRAWN MGM
CHECKED JCT
SHEET NO.



Know what's below. Call before you dig.